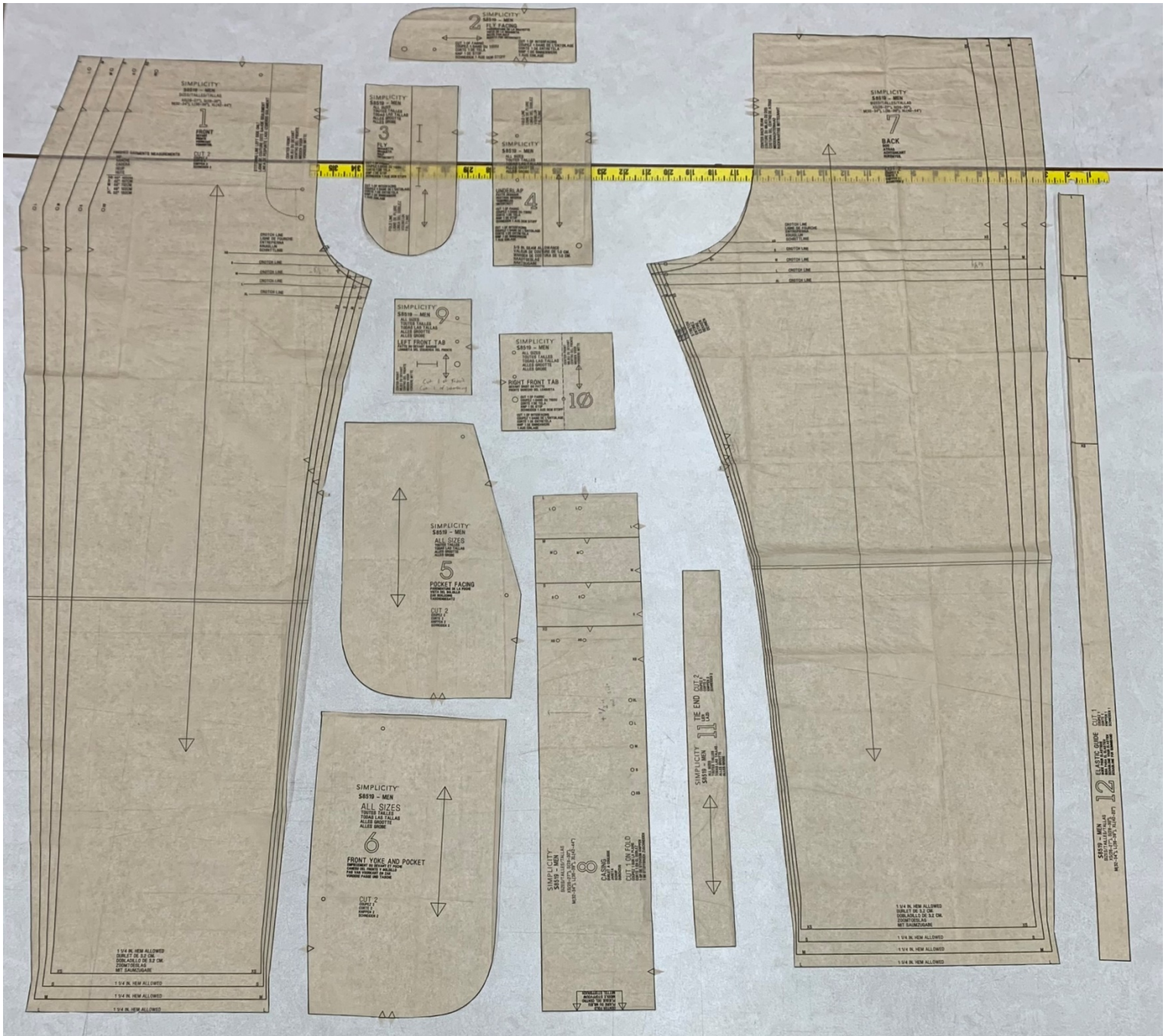


## Project 1: Garment That Hangs from The Waist

### Inspiration

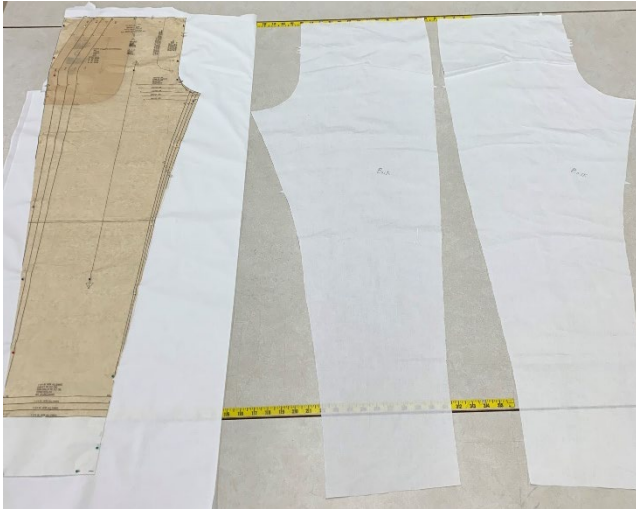


Pattern





Test Fabric with Muslin





### Adjusting Fit

- I took in the side seams 1 inch on both the front and back to allow for a closer fitting garment.
- I tapered the legs from the bottom of the thing down through the knee and calf to the ankle.
- I added an additional 4 inches to the length of the leg to create my desired drapey fit.

### Fashion Fabric Progress





## Construction Designs

### 1. Elastic waistband



### 2. Side pockets



### 3. Button fly



#### 4. Crotch seam



#### 5. Inseam



#### 6. Side seam



#### 7. Elastic cuffs





## 8. Serged edges on pieces



### Fabric swatch



### Challenges faced

- Got the wrong size of elastic, so had to compensate for it by adjusting my waistband.
- Having to redo small parts of the waistband hem that didn't catch underneath while sewing.
- Adding ribbon tape to the fly after a trimming mishap



Final Garment

