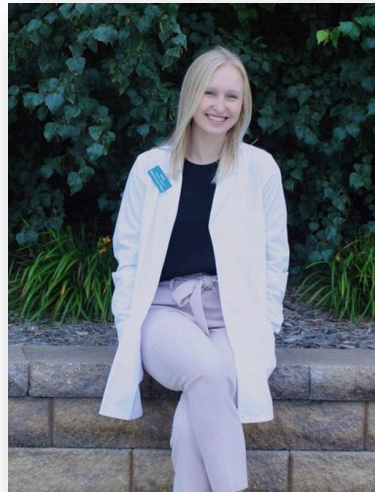


ADHM 155 Apparel Construction and Fit
Spring 2020
Documentation of Your Garment that Hangs from Your Waist

Documentation of the Process

My inspiration

My inspiration for this assignment was a blogger who posted a picture of paper bag waistband pants, and also a friend of mine posted a picture with a blush pink pair.



How did I achieve my fit?

I based my measurements off of my favorite pair of high-rise skinny jeans. Although those are tighter fitting, it still helped me know what measurements it would take to lay right against my body.



- **Paper fit** – My paper fit was out of newspaper because my pattern was out of paper, which made it too difficult to fit to my body. I actually ended up adding extra width to my pattern to make it bigger.
- **Muslin** - I got all the muslin pieces cut out and started looking at the directions. They started with the pleats and darts on the front and back leg pieces. I got those measured out and put together, but then I started running into problems with the sizing of the pants. So, before I got too far, I realized that they are not going to fit around certain parts of my leg and ended up altering them already. I had stitched up the inseam on one of my leg pieces and when I went to put it around my leg and see if it would fit, I noticed it wasn't going to attach on the other seam. After seam ripping that seam out, I ended up inserting fabric on the front and back pieces. I added a 1 ½ inch strip to both the front and back pieces with ¼ inch seam allowances, which made an extra 2 inches total around the whole leg. I then proceeded to do the pleats and darts. I got the pleats pinned out and I immediately basted them as the directions stated to do so. I then did the darts in the back. There are two darts on each leg, and I got those stitch too. Once I got enough of my pants done to see that it would fit, I began to start on my real fabric. Once I did a full fitting, I was able to see that the thigh area was barely going to fit around. This led to me adding 3 inches total around each leg to my pattern pieces to make my fashion fabric have that extra width added to fit around my leg better. The way I did this was I cut a straight line down the middle of both the front and back pant leg pieces. I pieced together a 1 ½ inch wide strip the length of a pant leg and taped it in between the cut I made down the middle. Because I was adding this extra fabric, I changed the top of the pants with all the pleats and dart markings so that it would be in accord with the extra fabric I added. I printed off new pattern pieces for just the waist pieces all around so that I wouldn't have to alter the pleats and darts. So, after a lot of calculations I finally altered the pattern the way I thought was correct, but after I started to get the fashion fabric pieced together, I realized I had added too much and in the wrong places. We ended up rearranging the pleats, darts, side

seams, in seams, and front and back rises. The first fitting of the fashion fabric is pictured below. This is where I realized I had a lot of fixing to do...



Construction Process of the Fashion Fabric

- I got all the pieces pinned and cut after laying them out on my fabric the correct way.
- I started with the preparation steps today by doing my pattern markings, interfacing on my waistbands, and staystitching on the main and lining of both the front and back legs.
- The pleats and darts were the first step of the construction and I got those put together by stitching the darts and basting the pleats. The thing that I probably shouldn't have done but didn't really have any other option was that I did a lot of the marking and tracing with a sharp #2 pencil, because I didn't have any proper marking tools. It was fine though because they were mostly on the inside of the fabric and the fabric was dark enough to hide most.
- I then moved on to the pockets. I never altered these when I altered the top of my pants, but after trying to sew them into the pants I noticed I must have done something wrong, because I ended up having to trim the side of the pocket to line up with the seams of the pant leg. I used a French seam on my pockets, which gave it a nice clean look.
- Next I sewed together the front rise and the back rise with a French seam as well. I then sewed the left side seam together using a French seam as well. I then moved on to the waistband. I chose to do the optional paper bag waistband, so I started to prepare this by measuring out markings for pleats all across the

fabric. Once I got those markings on there, I pinched every other space forward to create a pleat. After I did this along the whole piece, I took every two pleats and folded them inward. I basted these at a $\frac{1}{4}$ in seam allowance and then stitched at a $\frac{1}{2}$ in seam allowance. This waistband turned out really good and I was getting excited until I realized later when I went to start on the next steps that I had used the wrong piece of fabric. I lucked out and was able to cut out a new piece out of what fabric I had left and I just took apart the very nicely pleated waistband, so I could use it later for what it is supposed to be used for. I then did my belt loops, which consisted of just stitching up one long $\frac{1}{2}$ inch piece topstitched with a $\frac{1}{8}$ -inch seam allowance, and then I cut that into five pieces to place around the waistband. I just basted these on first and then I stitched over them when I attached my waistbands and paper bag waistband piece altogether. I finished my waistband by stitching together the ruffled pleated piece I just made with the interfaced waistband piece and the regular waistband piece. While trying to stitch through the thick fabric, I ended up busting a needle. I had to wait until I could get a new one from someone else and then I was able to continue. I was ready to move on to the zipper. Before starting the zipper, they suggest you do a fitting to make sure it will all work out. I pinned it the best I could and tried it on. This is where I realized everything went wrong. It was way too big everywhere and my calculations were all wrong. I had absolutely no idea of what I could do to fix it, so I ended up going to Fargo and met up with my teacher to get lots of help on fixing the whole fit of the pants. Turns out I should not have just added those strips in there like that without reconfiguring the rises, pleats, darts, and waist band. She helped show me how to solve tight fitting problems and loose-fitting problems especially in the glute area. This is where most people struggle with fitting into one size pattern pieces, because so many people have different proportions in the leg areas. After a lot of pinning, folding, fitting, stitching, basting, seam ripping, and measuring, we were able to get the pants to a spot where I could finish the rest at home.

- Now, I adjusted the side seams so that they would be more slim fitting. I had a lot of extra fabric that I clearly didn't need and shouldn't have added, but it did allow me to make alterations without having to add fabric at least. I just put the pants on inside out and safety pinned it the way I wanted it to fit against my legs and I carefully marked it on both pant legs the best I could. I started up high about at the bottom on the pocket and just tapered it inward down the whole leg. I cut off the excess fabric so that there is now a $\frac{1}{2}$ inch seam allowance and I finished it off with some zig zag stitches since I don't have a serger. I was now able to do the zipper. I did a center zipper instead of the invisible zipper it asked for and it was placed on the right hip. It looks clean and doesn't stick out too bad. Then I just made my belt by attaching the two pieces together, folded lengthwise, pressed, stitched at $\frac{1}{2}$ in seam allowance, folded right side out, and top stitched at $\frac{1}{4}$ inch.

Problems I Solved

- I encountered a variety of problems throughout this process, and learned a lot from them. Here are some examples of errors I made and how I fixed them
 - Measuring wrong (several areas and many times)
 - I fixed these problems of measuring wrong usually by seam ripping and starting over, or sometimes I would catch the mistake before I started to sew, so I would start again and re measure before moving on.
 - I made the belt loops out of the “optional paper bag waistband” piece, because I wasn’t paying attention and it was similar in size to the one, I really needed.
 - Because I actually stitched the whole thing together and cut in into 5 pieces, it was not able to be salvaged. I thankfully was able to get enough of my scrap fabric to just barely make another waistband piece and continued on from there.
 - I made the whole optional paper bag waistband on the wrong piece. I Made all those pleats that take a lot of time and measuring on the “belt” piece of fabric instead of the paper bag waistband piece of fabric.
 - I fixed this by taking the whole pleated piece apart and ironed it back out to be used later for the belt.
 - Fitting of the garment
 - Well, I mainly just went to Ann and she did her magic. What she and I ended up having to do was rearrange the rises by tapering off in the glute area, because I have smaller glutes than what I made the pattern to fit. We also had to adjust the inseam a bit to coordinate with what we did to the rises. Another thing we did was rearrange the pleats up front and the darts in back.

Fabric Swatch



Target Market

My Target market for this garment was for a group of women looking for a nice pair of slacks they can wear for special occasions. Like the one friend of mine, it works well for people looking for a sophisticated outfit for a ceremony as well as a fun pair of pants that you could wear for a night out with the girls. It gets the sophisticated touch from the classic business pants look and has a fun and cute top with the paper bag waistband. It really could be used for a day at the office or just a day out on the town.



8 Construction Details



French Seams



Serged Seams



Darts and Pleats



Zipper
Notches (not pictured, but on the corners inside)



Contoured waistband

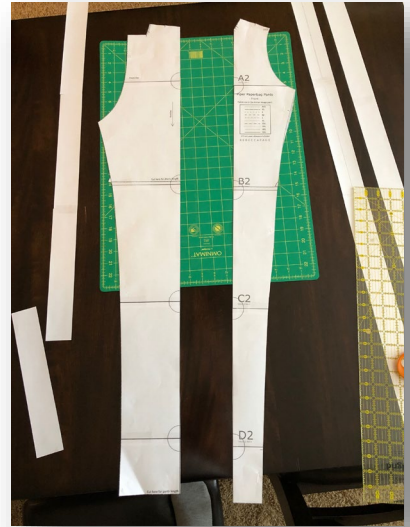


Interfacing

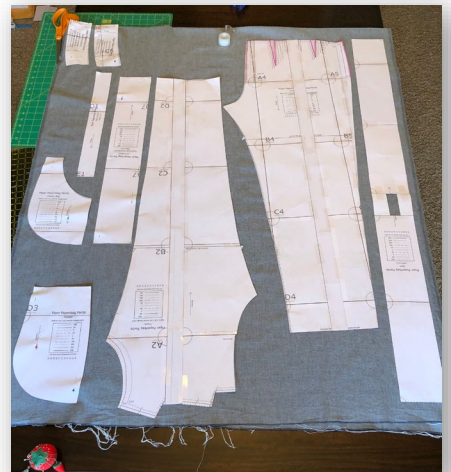
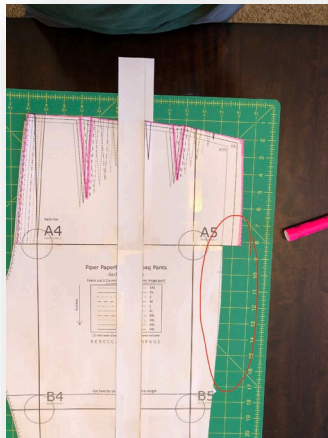
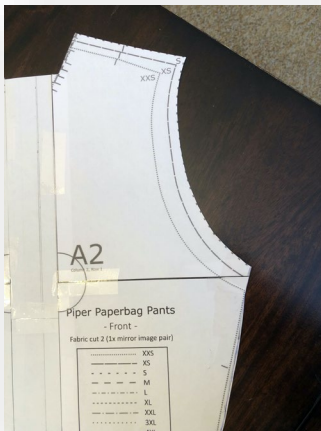


Pockets

Stages of Construction



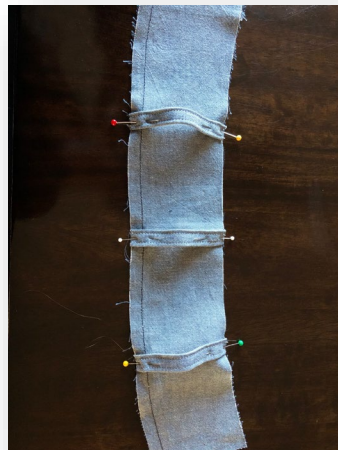
Alterations of muslin fitting. Practice pocket placement





Start of the fashion fabric – pleats and pocket

Formation of belt loops and basting them onto the main waistband.





Formation of the pleated paper bag waistband and attaching it to the main waistband.



Zipper placement



Tapering off the seams to get a slimmer fit.

The Final Product

