

NDSU NORTH DAKOTA
STATE UNIVERSITY

STUDENT FOCUSED • LAND GRANT • RESEARCH UNIVERSITY

Impact of Historical Trauma on American Indian Health Disparities

Donald Warne, MD, MPH

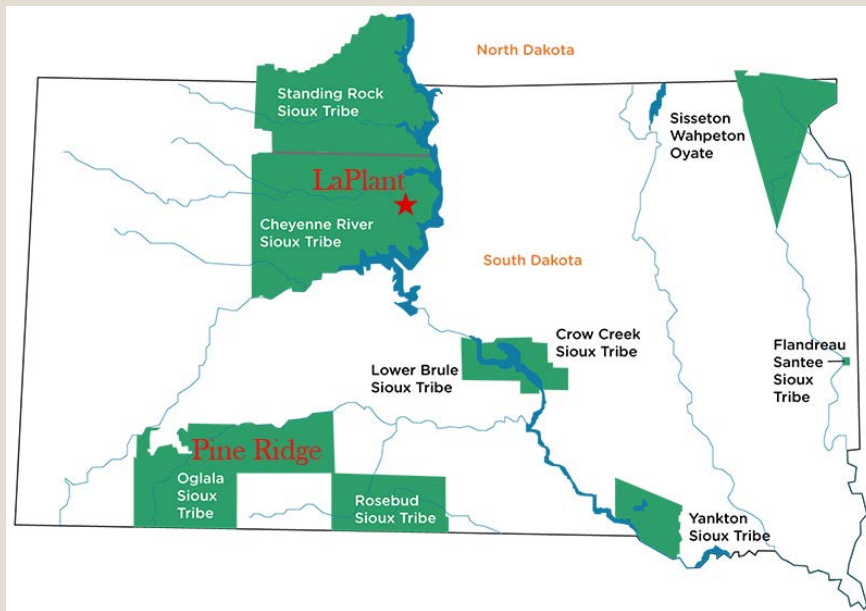
Oglala Lakota

Director, Master of Public Health Program

North Dakota State University

May 7, 2015

Pine Ridge Indian Reservation



A landscape photograph of a sunset over a field with a winding road. The sky is filled with soft, golden light from the setting sun, with wispy clouds catching the light. The ground is dark and appears to be a field or prairie, with a gravel road curving through it. The overall mood is peaceful and serene.

Pine Ridge Reservation
Kyle, S.D.

Pine Ridge Indian Reservation



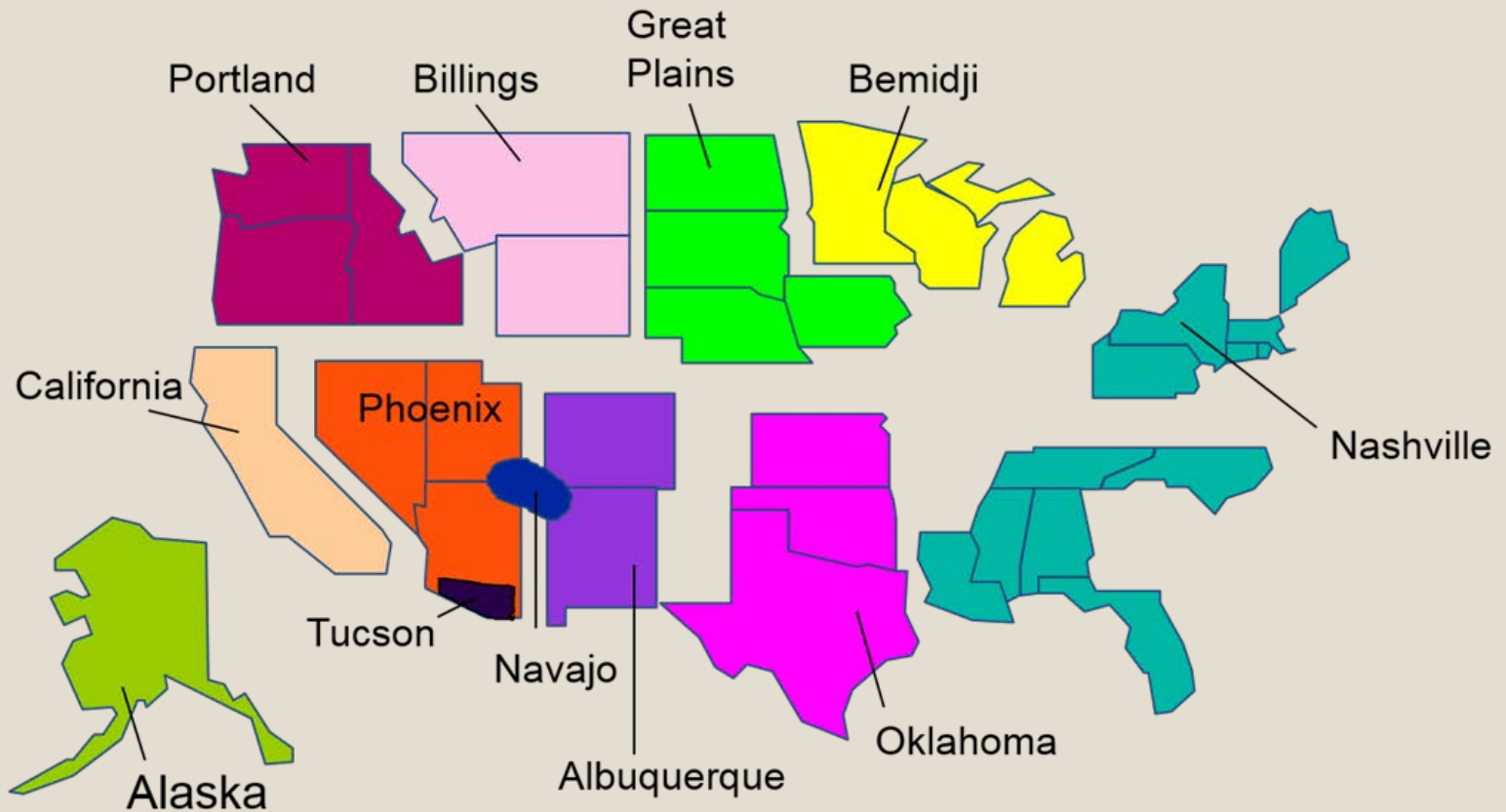








Indian Health Service Areas



American Indian Health Disparities

Life Expectancy in Years:

	<u>Men</u>	<u>Women</u>	<u>Total</u>
U.S.	74.1	79.5	76.9
GPAIHS	63.5	71.0	67.3
<i>Disparity:</i>	10.6	8.5	9.6

Average Age at Death in ND (2005-2010):

- **75.7** years in the White population
- **54.7** years in the American Indian population

AI Health Disparities

Death rates from preventable diseases among AIs are significantly higher than among non-Indians

- Diabetes 208% greater
- Alcoholism 526% greater
- Accidents 150% greater
- Suicide 60% greater

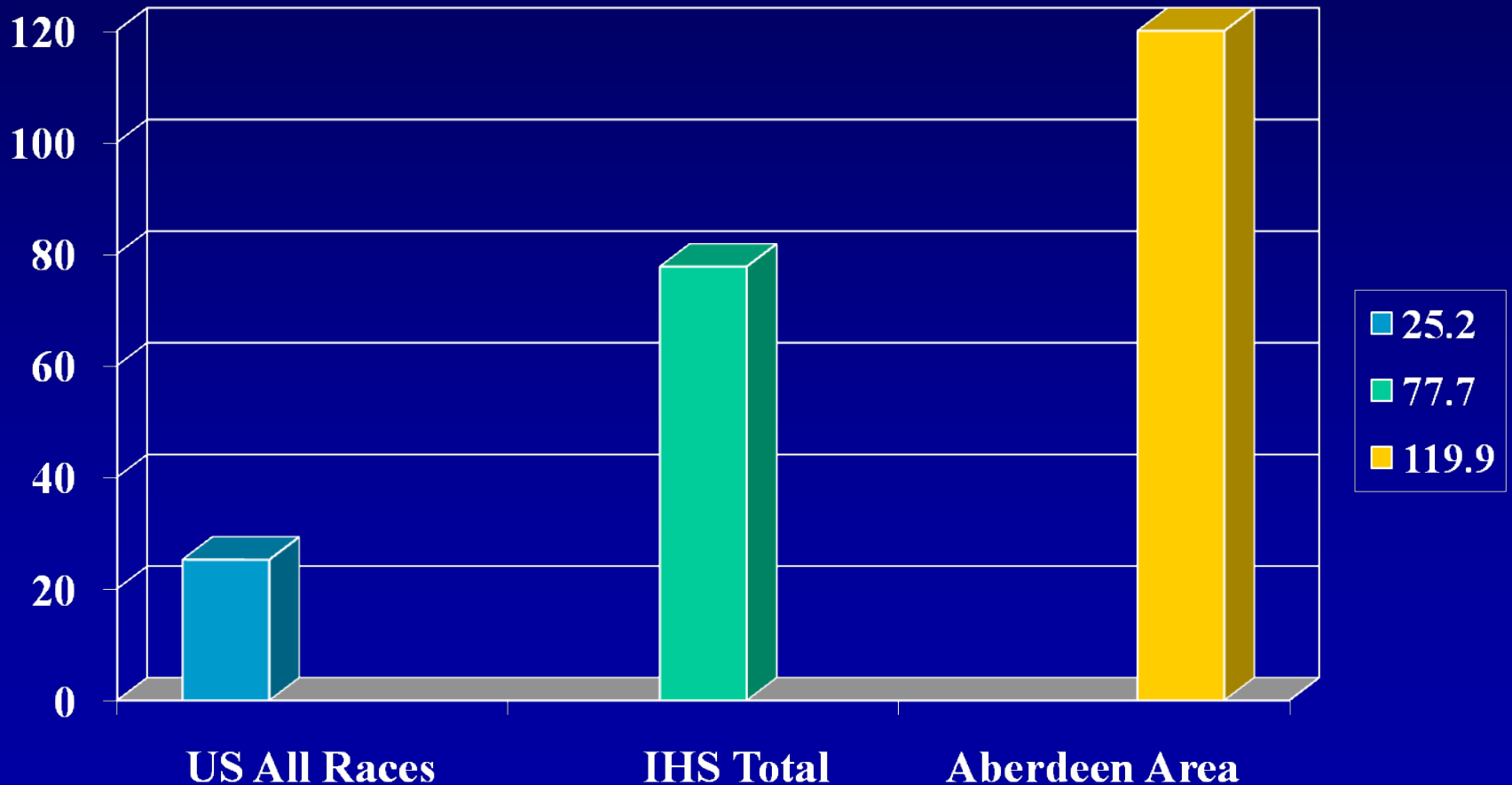
State Suicide Mortality rates by Race, 1990-2002

<u>State</u>		<u>Rate</u>
North Dakota	White	11.3
	American Indian	26.0
South Dakota	White	12.8
	American Indian	27.0

Underlying mortality data provided by NCHS (www.cdc.gov/nchs).
Rates are per 100,000 and age-adjusted to the 2000 US Std Population
(19 age groups, Census P25-1130) standard

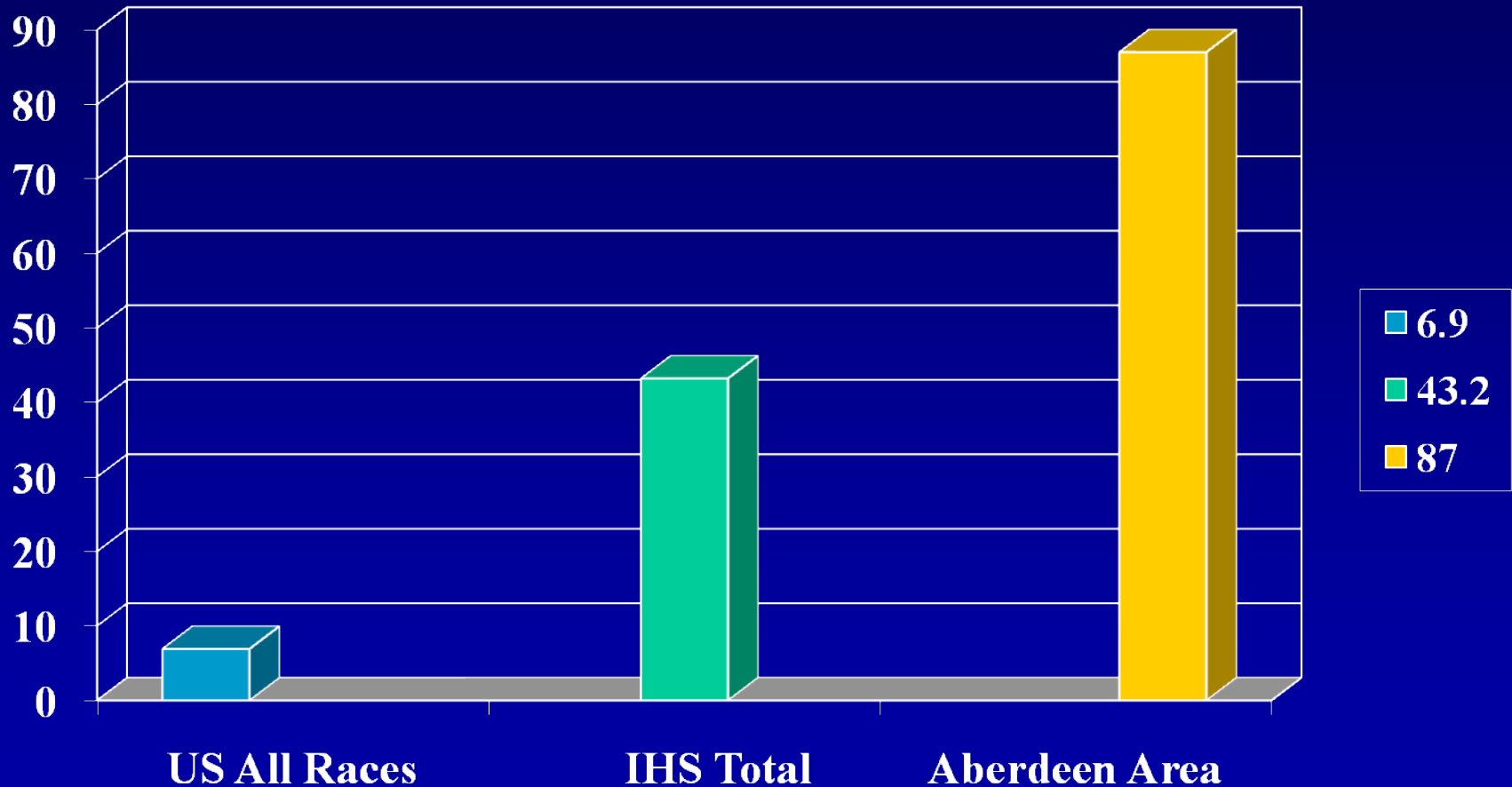
Diabetes Death Rates

(Rate/Per 100,000 Population)



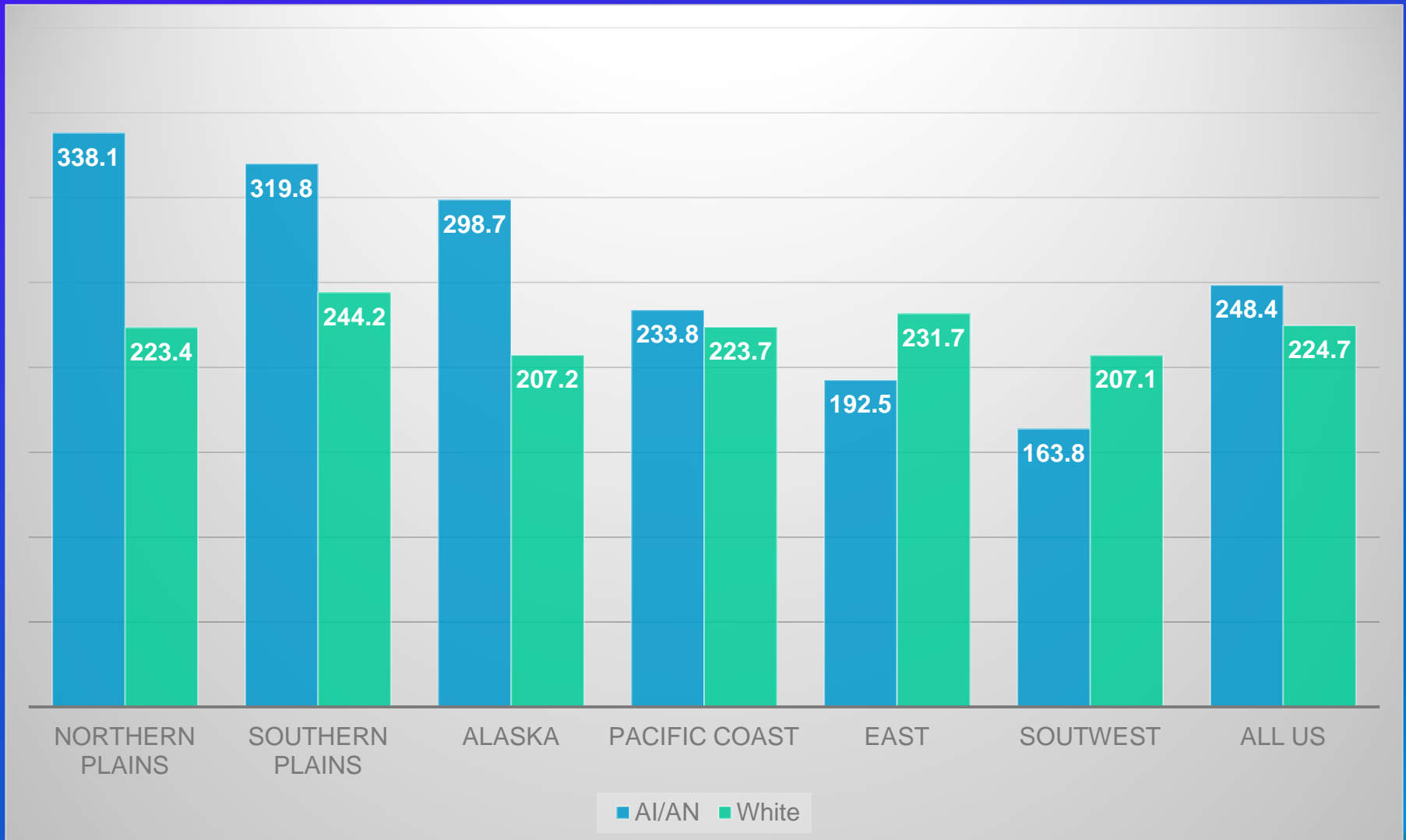
Alcohol Related Death Rates

(Rate/Per 100,000 Population)

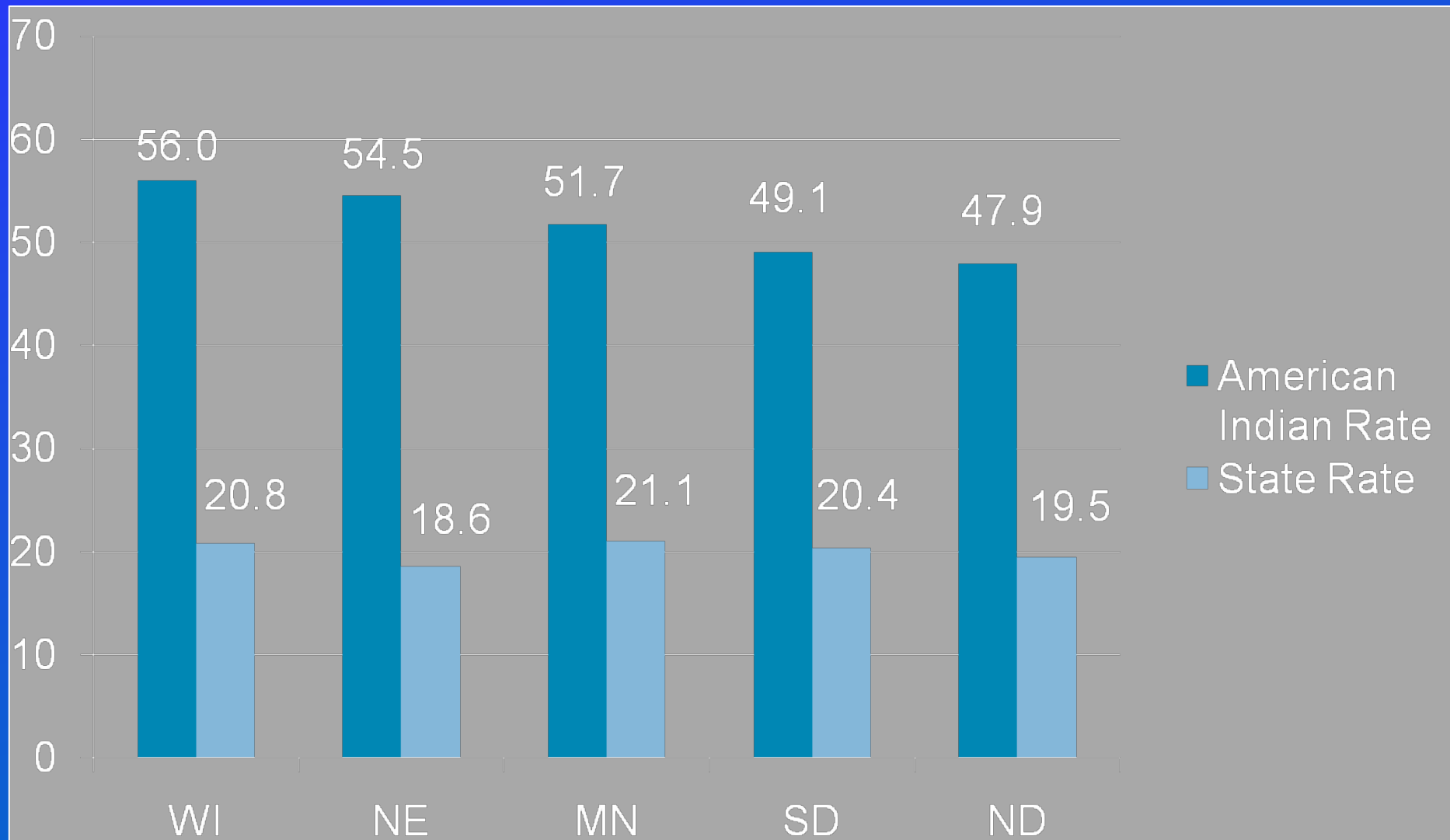


Cancer Death Rates

(Rate per 100,000 population)



Smoking Disparities by State



Traditional Tobacco ≠ Commercial Tobacco

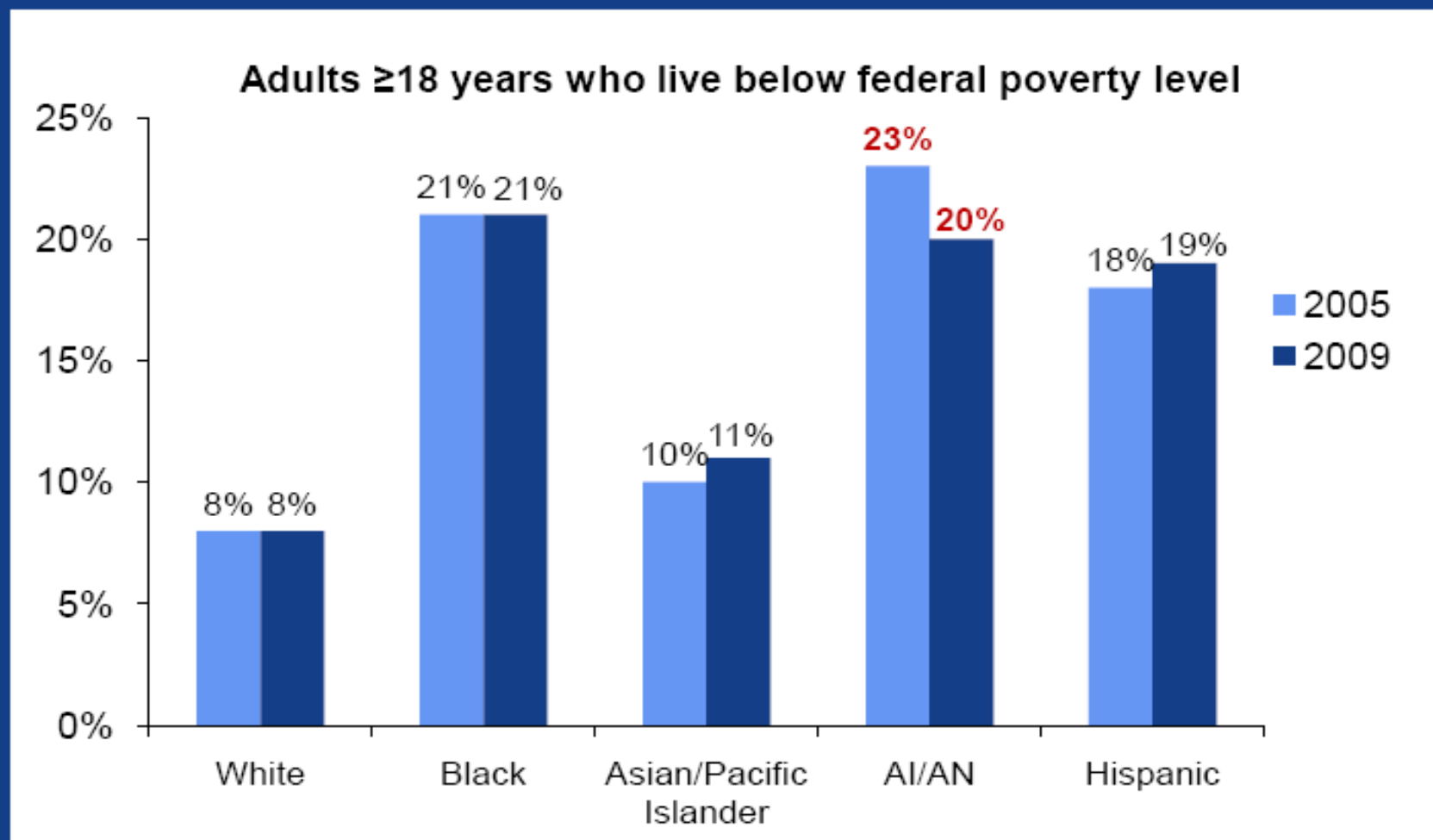
Traditional Tobacco



Commercial Tobacco

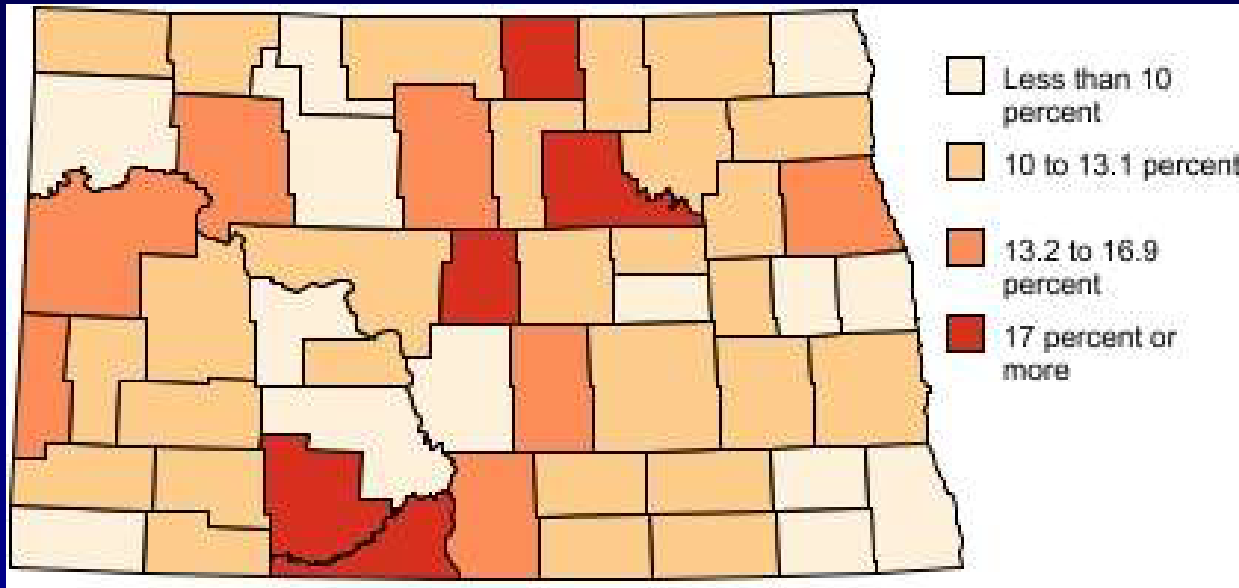


2.5 times as many AI/ANs as whites live below poverty level



Source: CDC Health Disparities and Inequalities Report 2011, MMWR, Vo. 60

Poverty in North Dakota

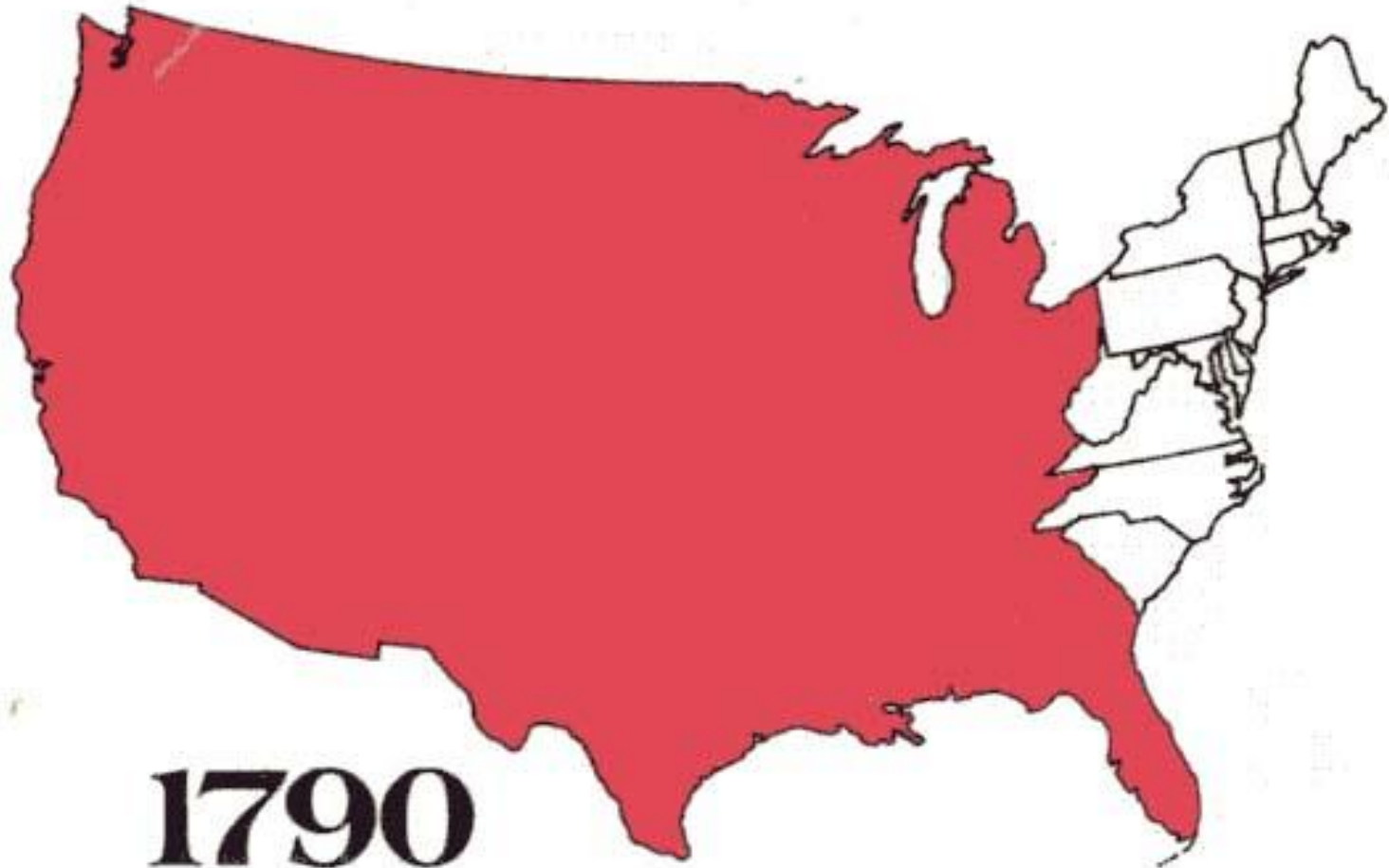


Historical Context

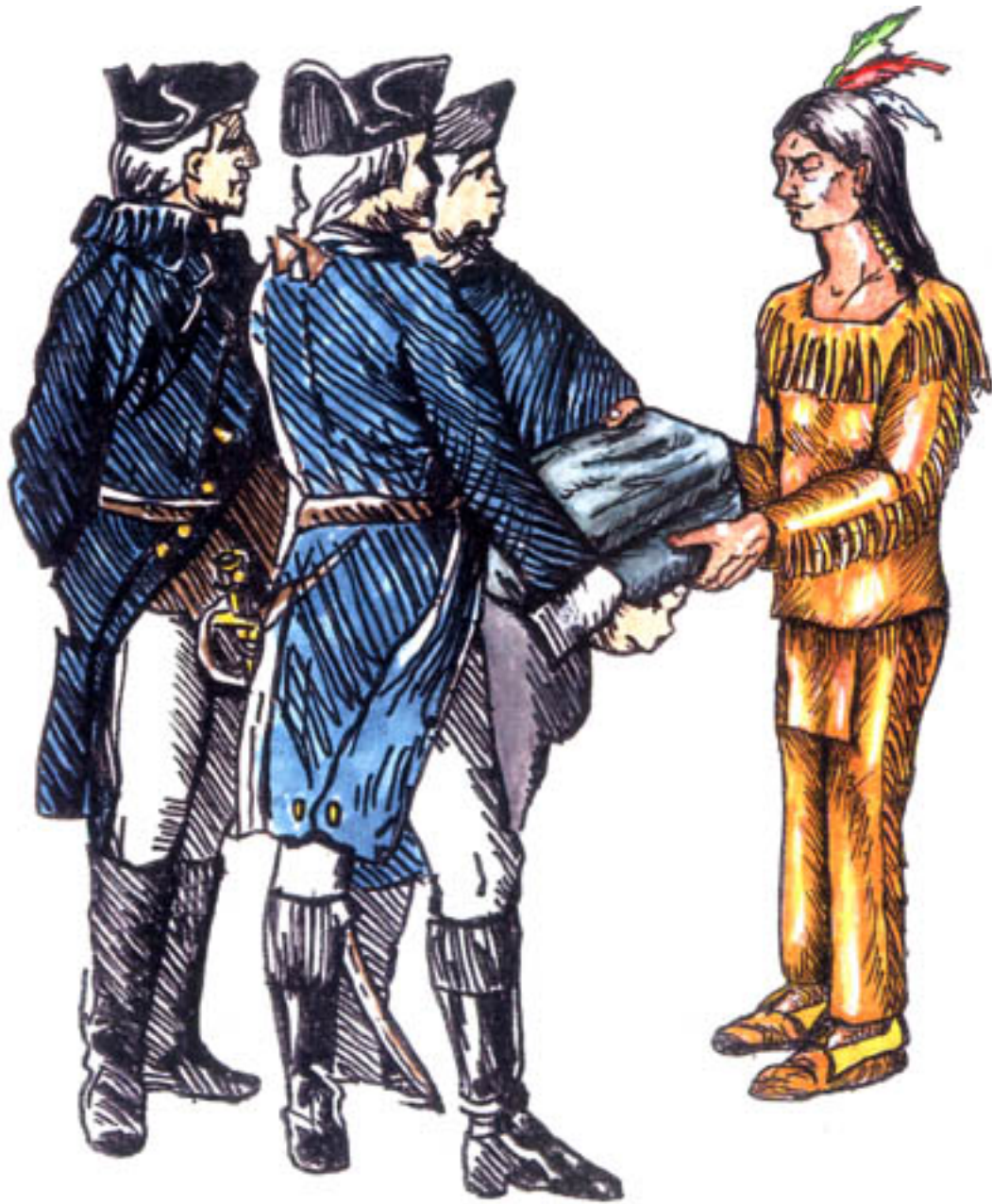


1492

Historical Context



1790



PETERS '01

Historical Context



1830



MISSOURI

ILLINOIS

INDIANA

OHIO

MD.

KENTUCKY

VIRGINIA

Springfield

CHEROKEE

Cherokee
"Trail of Tears"

Nashville

NORTH CAROLINA

CHEROKEE

CREEK

CHEROKEE

CHEROKEE RES.

SEMINOLE

Fort Gibson

TENNESSEE

Memphis

SOUTH CAROLINA

CHICKASAW

Fort Coffee

CHICKASAW
1832

New Echota

GEORGIA

CHEROKEE
1835

Fort Smith

CHICKASAW

ALABAMA

ARKANSAS

CHOCTAW
1830

CREEK
1832

Fort Mitchell

ATLANTIC OCEAN

Fort Towson

CHOCTAW

CHOCTAW
1830

Montgomery

LOUISIANA

MISSISSIPPI

FLORIDA TERRITORY

SEMINOLE
1832-1833

GULF OF MEXICO

0 100 200 Miles

0 100 200 Kilometers

Tribal lands (date ceded)

Reservations

Removal routes

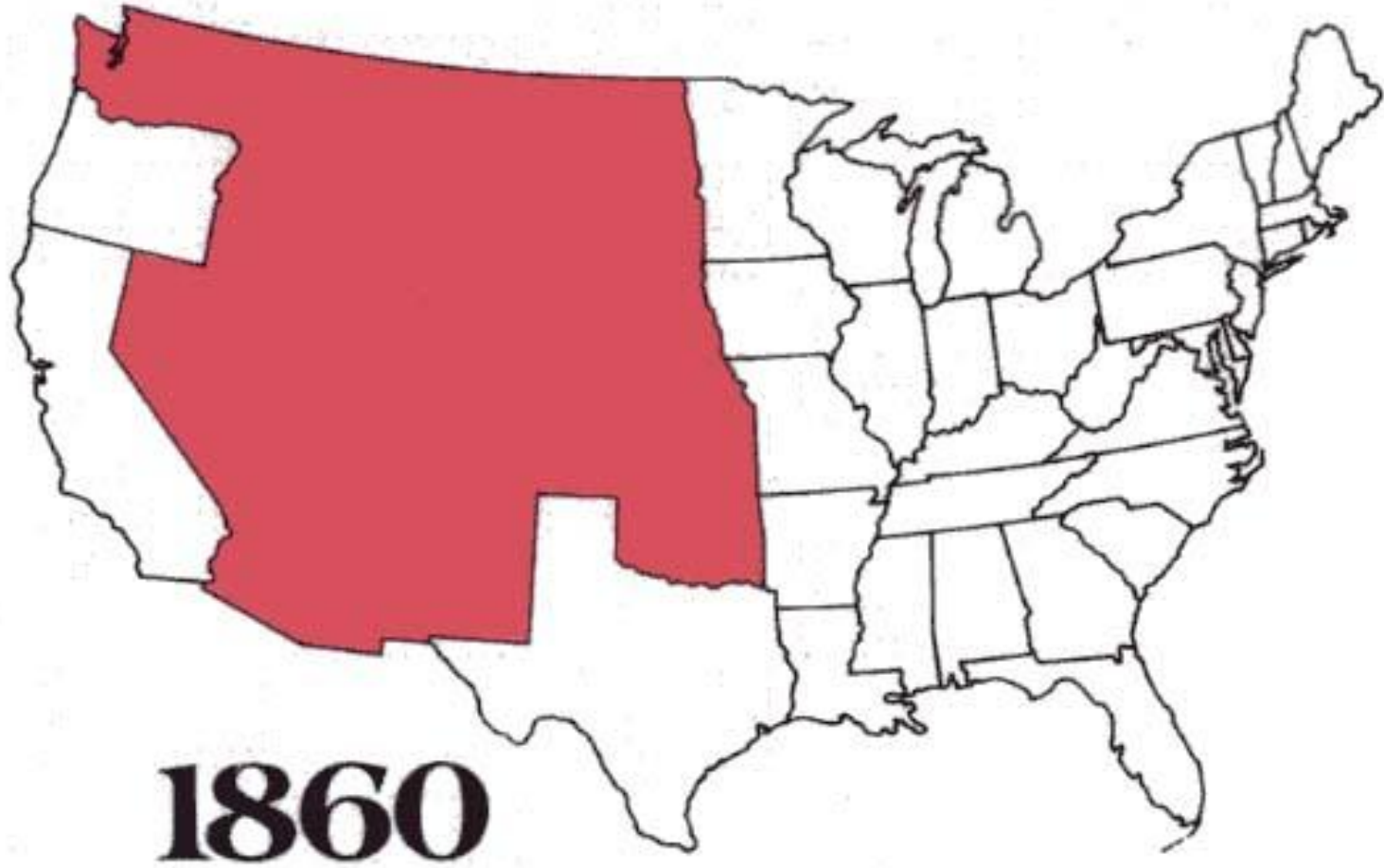


SOONER
SCHOONER®

2003 PU-FITB N

OU

Historical Context



State Ticket.

For Governor.....STEPHEN MILLER, of Stearns.
For Lieut. Governor...CHAS. D. SHERWOOD, of Willmore.
Secretary of State.....DAVID BLAKELY, of Oilsted.
Auditor of State.....CHAS. McILRATH, of Nicollet.
State Treasurer.....CHAS. SCHEPPER, of Washington.
Attorney General.....GORDON E. COLE, of Rice.
Clerk Supreme Court..GEO. F. POTTER, of Houston.

County Ticket.

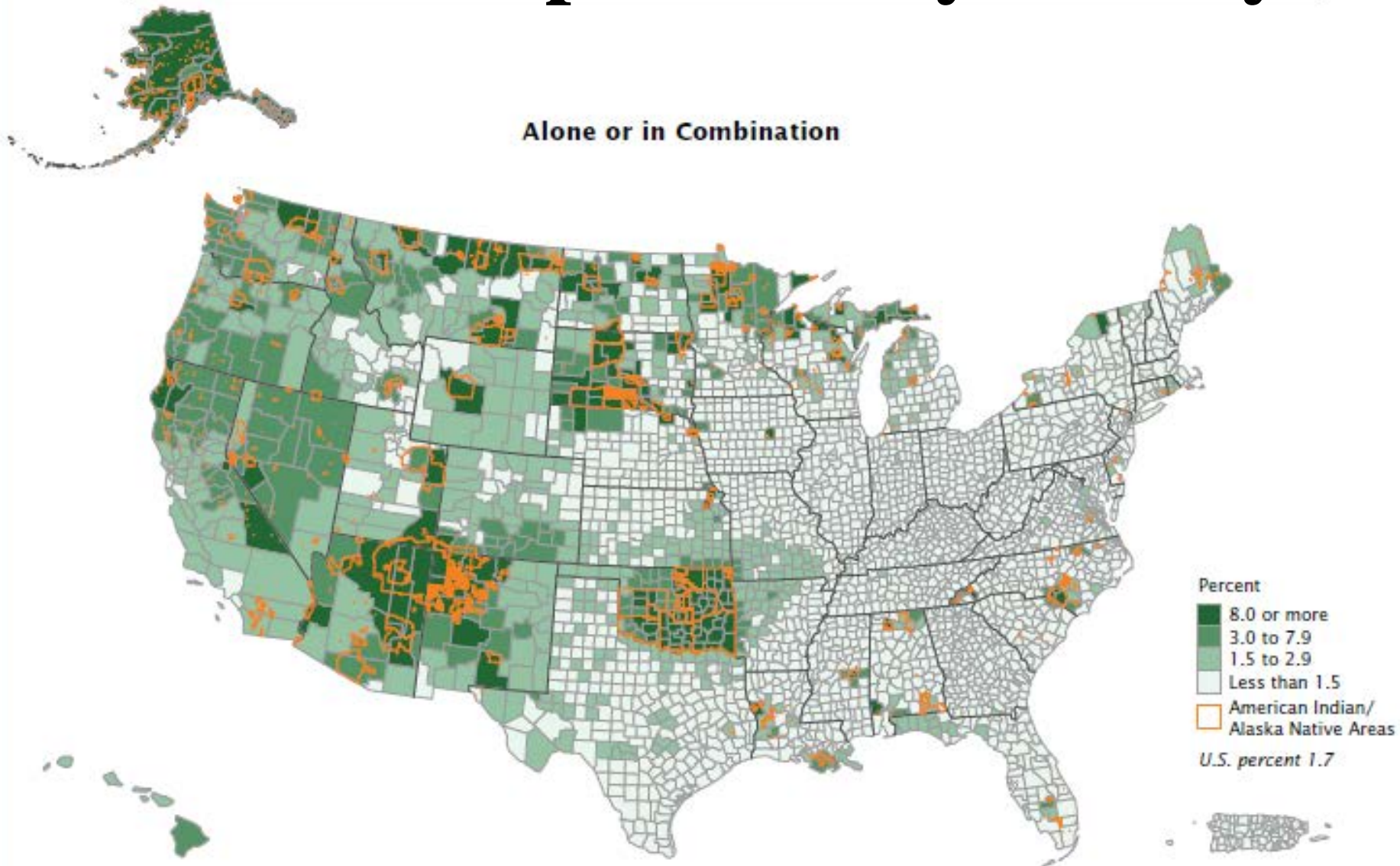
For State Senator.....THOMAS SIMPSON.
For Representatives.....EARLE S. YOUNG.
.....THOMAS P. DIXON.
For Sheriff.....LYNCH W. KING.
For Treasurer.....MATHEW J. NORBY.
For Surveyor.....N. FELIX HILBERT.
For Coroner.....EDWARD CLY.

THE State reward for dead Indians has been increased to \$200 for every red-skin sent to Purgatory. This sum is more than the dead bodies of all the Indians east of the Red River are worth.

Historical Context

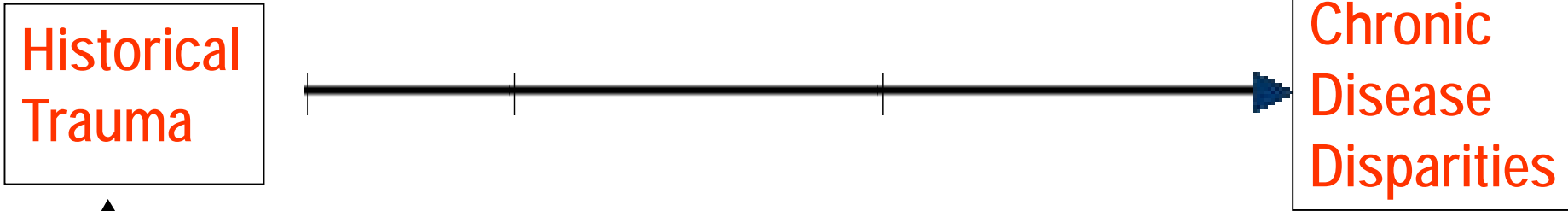


AI/AN Population by County



Source: U.S. Census Bureau, 2010 Census Redistricting Data (Public Law 94-171) Summary File, Table P1.

Inter-Generational Basis for Chronic Disease Disparities Among American Indians and Alaska Natives



Historical Trauma



Nazi Concentration Camp

Wounded Knee

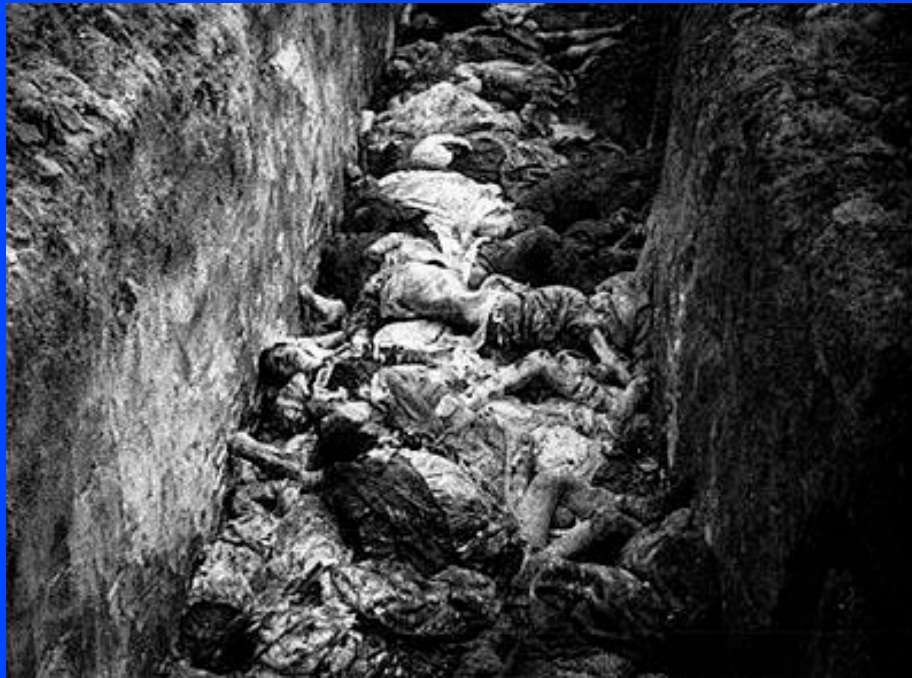


Nazi Concentration Camp



Wounded Knee



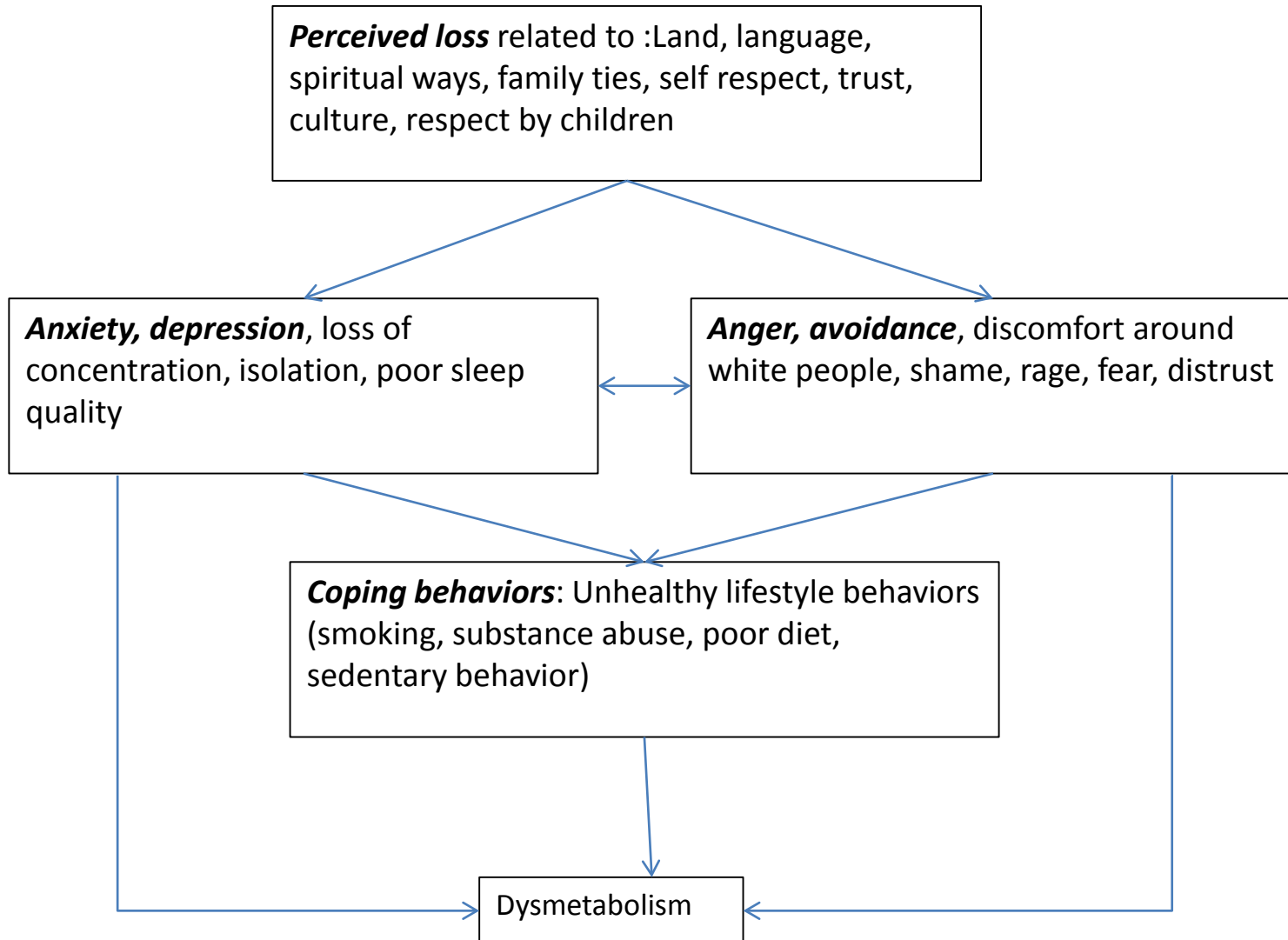


Nazi Concentration Camp

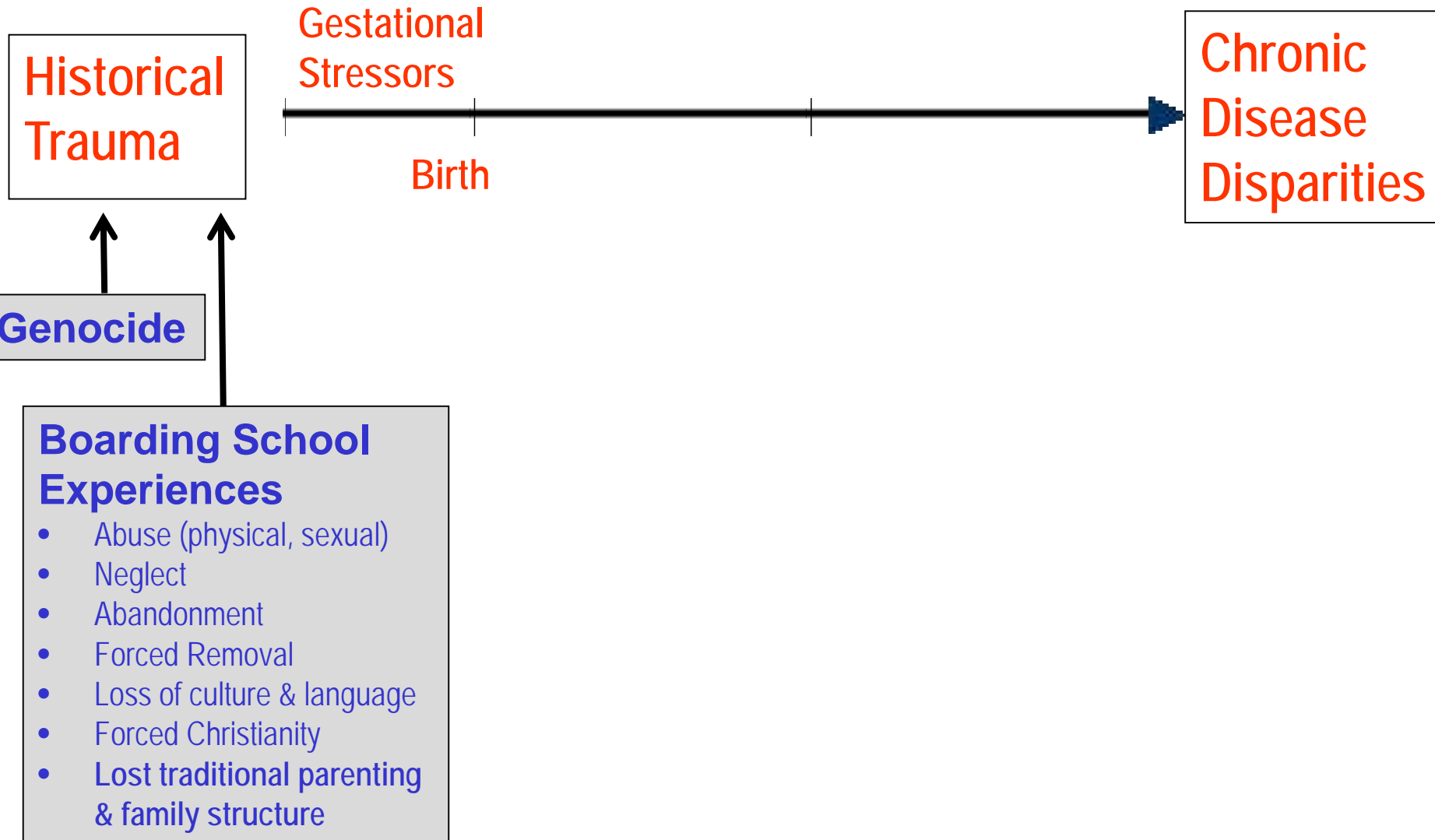
Wounded Knee



Framework for historical trauma



Inter-Generational Basis for Chronic Disease Disparities Among American Indians and Alaska Natives

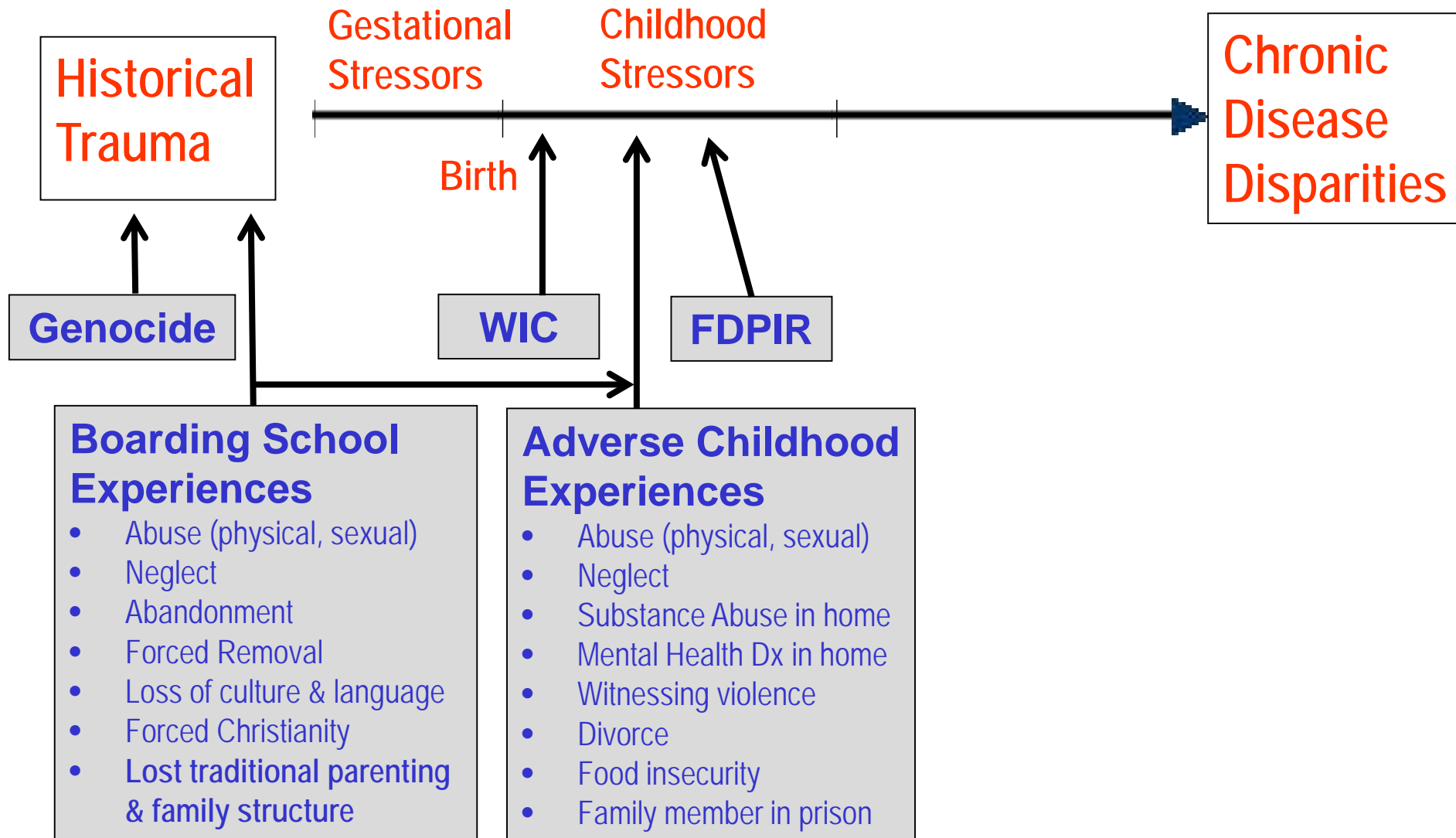


Historical trauma is the collective emotional wounding across generations that results from massive cataclysmic events – Historically Traumatic Events (HTE)*

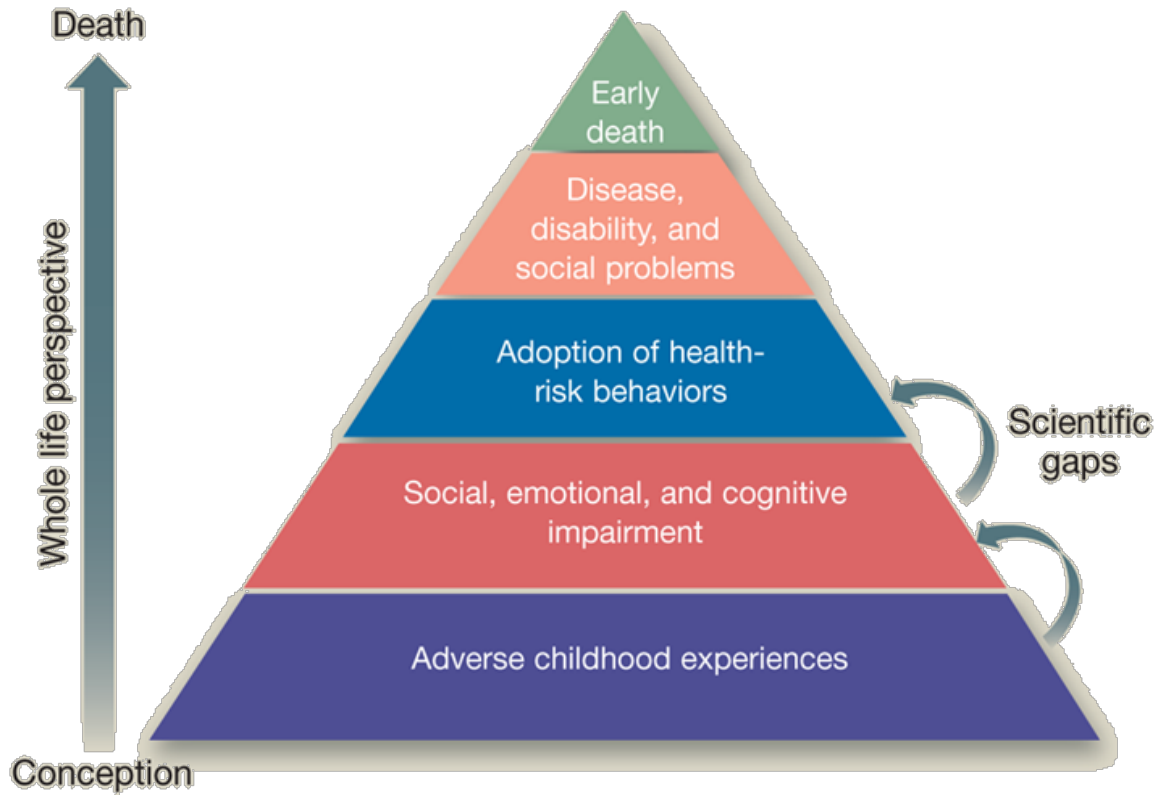


- The trauma is held personally and transmitted over generations. Thus, even family members who have not directly experienced the trauma can feel the effects of the event generations later

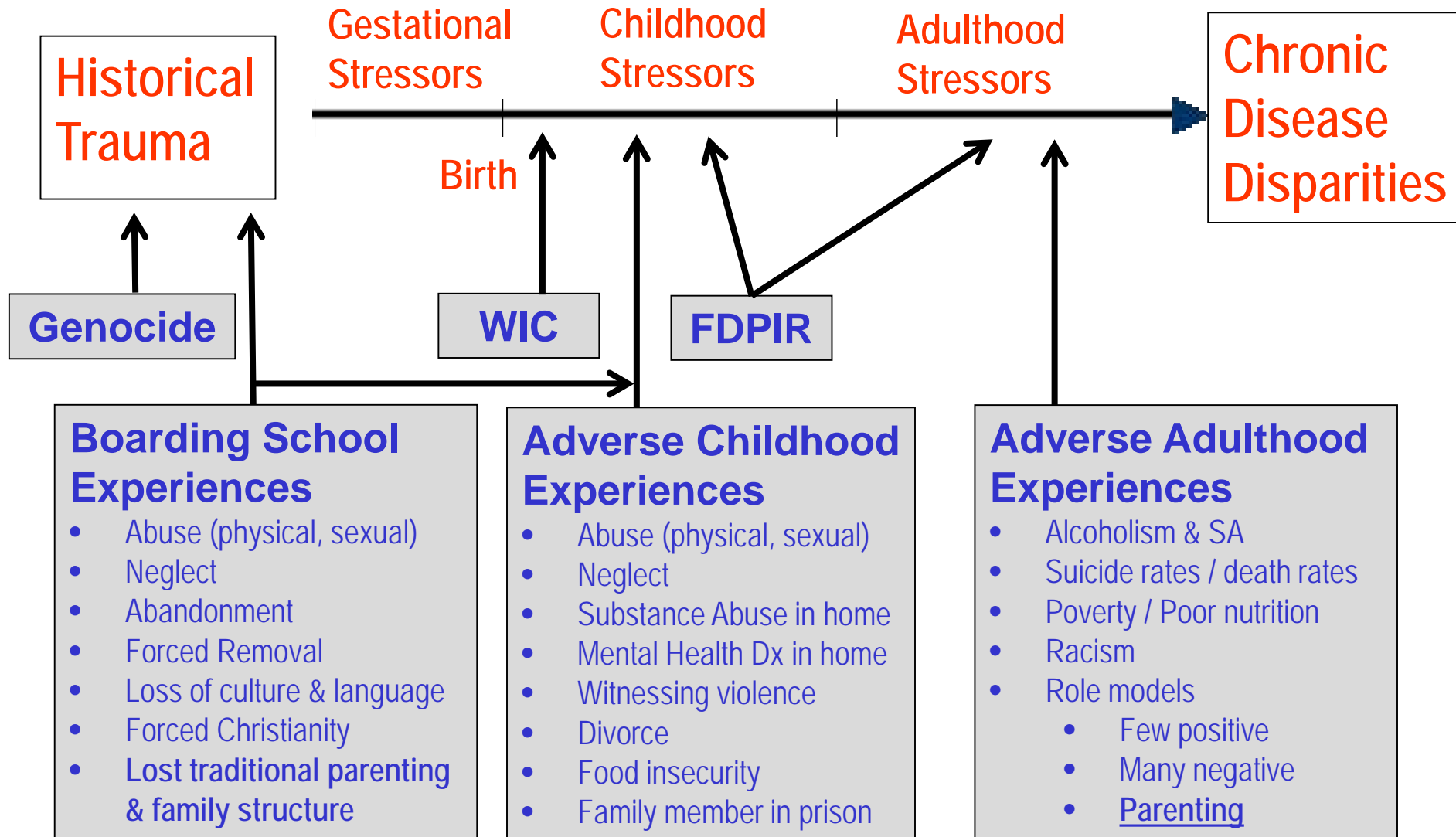
Inter-Generational Basis for Chronic Disease Disparities Among American Indians and Alaska Natives



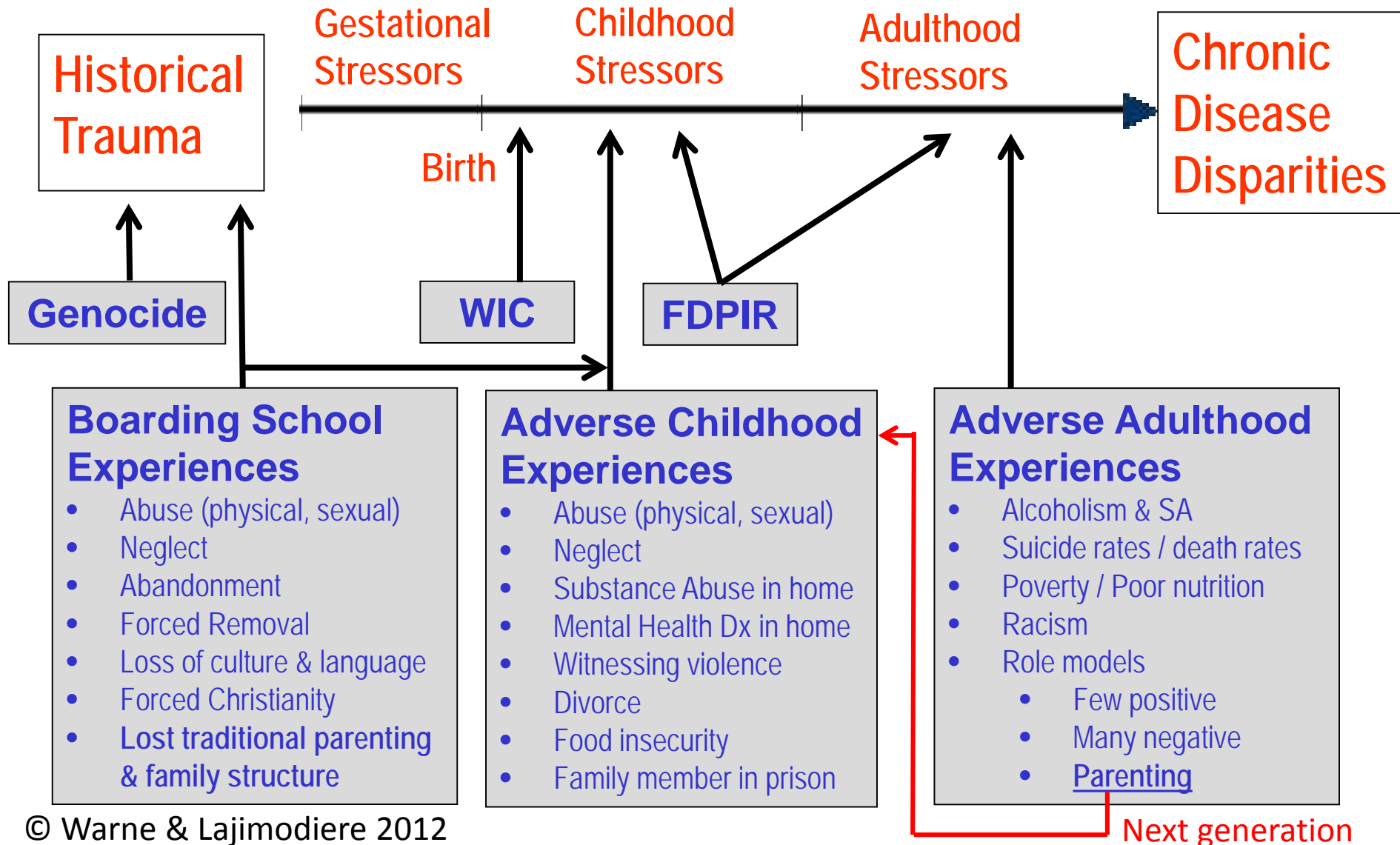
ACE Study Pyramid



Inter-Generational Basis for Chronic Disease Disparities Among American Indians and Alaska Natives



Inter-Generational Basis for Chronic Disease Disparities Among American Indians and Alaska Natives



Does Racism Still Exist?

May 10, 2014 – Grand Forks, ND (UND)



Does Racism Still Exist?

May 7, 2014 – Waddington's Auction House



Does Racism Still Exist?

May 7, 2014 – Waddington's Auction House



Significant Challenges

Social Determinants

- Poverty
- Trauma
- Politics
- Inattention/Neglect
- Racism
- Inequity

Outcomes

- Health Disparities
- Education Inequality
- Generational Poverty
- Ongoing Racism
- Worsening Inequity
- Suffering and Death

Specializations/Tracks

- NDSU MPH
 - Health Promotion (CHES)
 - Management of Infectious Diseases
 - Public Health in Clinical Settings
 - **American Indian Public Health**

MPH Curriculum

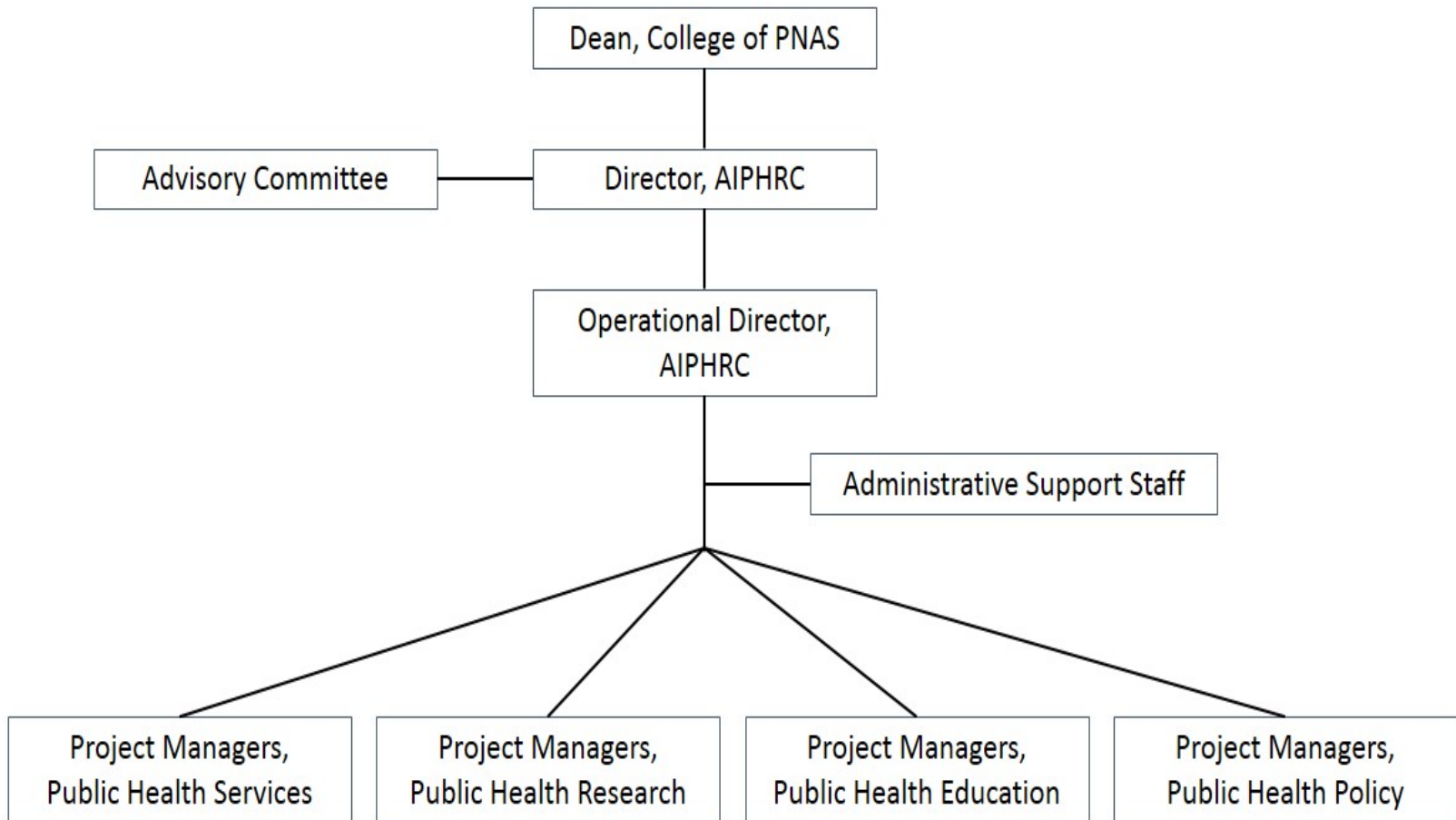
- Core Courses
 - 18 Credits
- Specialization Courses
 - 18 Credits
- Practicum and Master's Paper
 - 3 Credits each
- Total Credit Hours
 - 42

Specializations/Tracks


American Indian Public Health

- Required Courses
 - American Indian Health Policy
 - American Indian Health Disparities
 - Cultural Competence in Indian Health
 - Research Issues in Tribal Communities
 - Case Studies in Indian Health
- Elective Courses (Choose 1)
 - American Indian Elder Care
 - Indigenous Food Systems and Nutrition
 - Other MPH Course

American Indian Public Health Resource Center





A person is sitting cross-legged in a grassy field, looking towards a sunset. The sun is low on the horizon, casting a warm glow over the scene. In the background, another person is standing in the field, and a dog is visible near their feet. The overall atmosphere is peaceful and contemplative.

“Peace comes within the souls of men when they realize their oneness with the Universe, when they realize it is really everywhere, it is within each one of us.”

~ Black Elk



donald.warne@ndsu.edu