

Tribal Transportation Outreach

Working in Native Directions

NeTia Bauman
Tribal Program Outreach Coordinator

Upper Great Plains Transportation Institute

- UGPTI is a research, education, and outreach center at NDSU which is guided, in part, by an advisory council composed of representatives of various organizations, industries, and agencies affecting or affected by transportation.
- **Mission:** *Providing innovative transportation research, education, and outreach that promote the safe and efficient movement of people and goods.*

About Tribal Outreach

- **Mission:** *The Tribal Outreach effort improves safe transportation of people and goods on tribal reservations to enhance livability, community and cultural values through increased accessibility to employment, workforce development opportunities, education, healthcare and housing.*

- **Vision:** *The Tribal Outreach effort will be a leader in facilitating improvements in tribal transportation to enhance livability and cultural values for reservation residents.*
- Started in the fall of 2016
- Primary focus is to assist Native communities with implementing and/or improving transportation safety programs to improve overall tribal livability

Tribal Transportation Task Force

- Initiated a task force comprised of state, local, tribal and academic leaders
- Objective is to be a sounding board for Native transportation/safety issues
- Members represented include:
 - MHA/Three Affiliated, Spirit Lake Nation, TMBCI, Standing Rock (hasn't been replaced), BIA (federal and regional), FHWA, ND State legislature, Indigenous non-profit business, FSA, USDA
 - If interested, please contact me.

Facts

- Unintentional motor vehicle injuries are the leading cause of death for natives ages 1-44.
- Motor vehicle crashes are the leading cause of death for natives under 20.
- Motor vehicle death rates of Native infants under age 1 are 8 times higher than that of non-Hispanic white infants.

Alive @ 25 Training Center

- UGPTI is partnering with ND Safety Council to become the first nationally certified training “center” for the *Alive at 25* training.
- UGPTI’s training program will target Native youth/young adults.
- Co-teaching one final training to receive certification



Vehicle crashes are the #1 cause of death for people ages 14 to 24. Alive at 25 is an interactive classroom course offered by the North Dakota Safety Council that is designed to reduce the likelihood of young drivers ending up in a car crash.

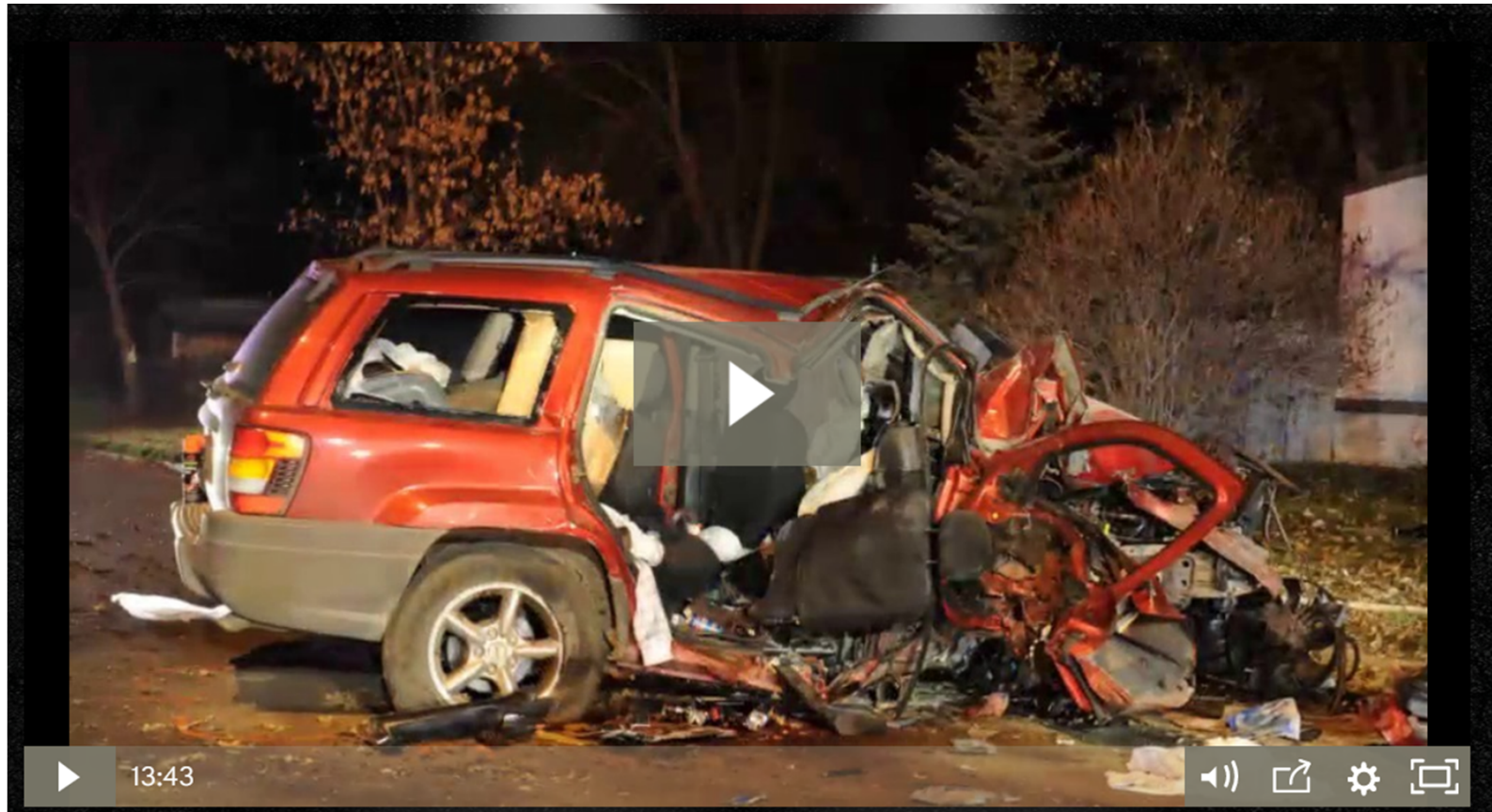
Alive @ 25

- Interactive 4.5-hour program targeting drivers under the age of 25.
- Utilizes Reality Therapy and Choice Theory technique to help young drivers take responsibility for driving and human behavior.
- Focus is on behavior, judgement, decision making and consequences
- My training targets Native youth ONLY

- All students who complete the training receive a certificate that can assist in insurance discounts and point reduction
- UGPTI funded my training/certification – I'm now searching for small grants to cover the cost of workbooks, to offer this free-of-charge to tribal youth.
- \$15/book – averaging 20-25 youth per session
- "110 Club"

www.ndsc.org/AliveAt25

<http://www.momentsofimpact.info/>



National CPS Tech Certification

- Beginning next week, we will open scheduling to bring CPS training to tribal communities
- A Program of Safe Kids Worldwide
- Will provide free car seat checks, training on proper installation, appropriate car seats and requirements for ALL ages
- Community safety events targeting Native Communities

Transportation Awareness in Schools

- Working with TTTF to develop a project outline/conduct outreach.
- **Objective:** *provide outreach to tribal middle and high schools/alternative schools to generate interest in transportation-related careers*
- *2012-2022: 417,000 NEW transportation jobs*
- *Entry-level as well as mastery*

Careers in Transportation

THE UNIVERSITY OF MEMPHIS | Intermodal Freight Transportation Institute

What is Transportation?

The safe, efficient, reliable, and sustainable movement of persons and goods over time and space.

Career Fields in Transportation

- Engineering
- International Business
- Mathematics
- Finance and Accounting
- Law
- Planning
- Human Resources
- Logistics
- Public Service
- Marketing
- Science
- Technology

Jobs in Transportation

- | | |
|--------------------------------------|--|
| Academic professor | Public transportation manager |
| Aerospace engineer | Project manager |
| Airport designer | Risk analyst |
| Air traffic controller | Safety analyst |
| Civil engineer | Transportation analyst |
| Construction manager | Transportation policy maker |
| Environmental impact analyst | Traffic Engineer |
| Freight movements specialist | Urban planner |
| Infrastructure inspector | Operator (barge, train, plane, public transit, etc.) |
| Intermodal transportation specialist | And many, many more— |
| Licensed customs broker | numerous options exist |
| Mechanical engineer | within the world of |
| Operations manager | transportation! |

Modes of Transportation



Air – whether shipping goods or transporting passengers, air travel is one of the fastest (and more expensive) forms of transport.



Pipeline – found underground most often, pipelines typically transport liquids or gases over long distance. This mode is often used to ship petroleum or natural gas.



Water – a less expensive alternative to air, transportation on water serves as the majority of goods shipment overseas. The largest shipping container ship in the world can hold 16,000 containers (each of which is 40 feet long). That is a lot of goods!



Railway – serving both passenger and goods movement demand, the railway industry ships 42% of the nations freight.



Roadway – housing numerous modes (personal vehicles, public transit, trucks, bicycles, pedestrians) this includes both highways and less busy local corridors. Infrastructure for these modes such as roads, bridges, bike lanes, sidewalks, and crosswalks is expansive!

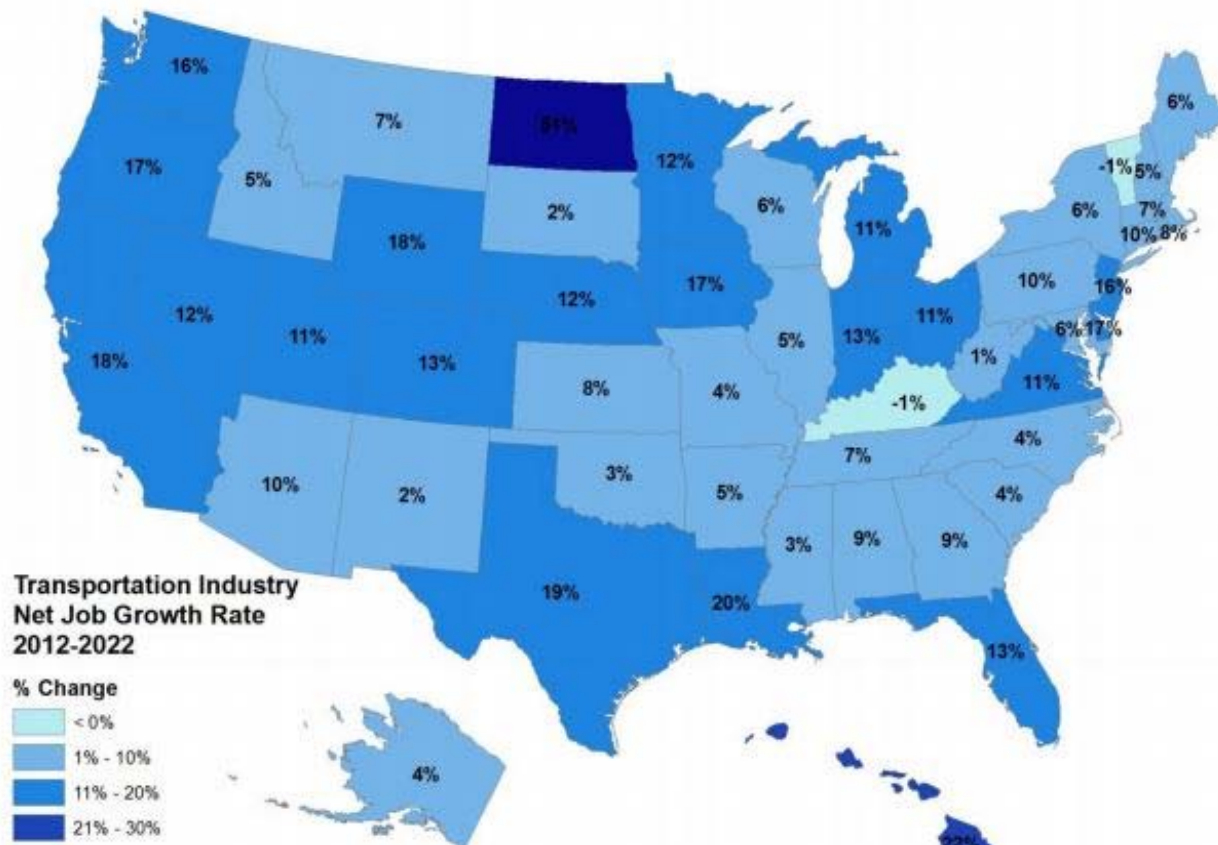
Opportunities in Transportation

- 1 in 8 US jobs is directly related to transportation (nationalatlas.gov).
- Roughly 50% of the transportation workforce will retire over the next 10 years (The National Academies Press– The Workforce Challenge).

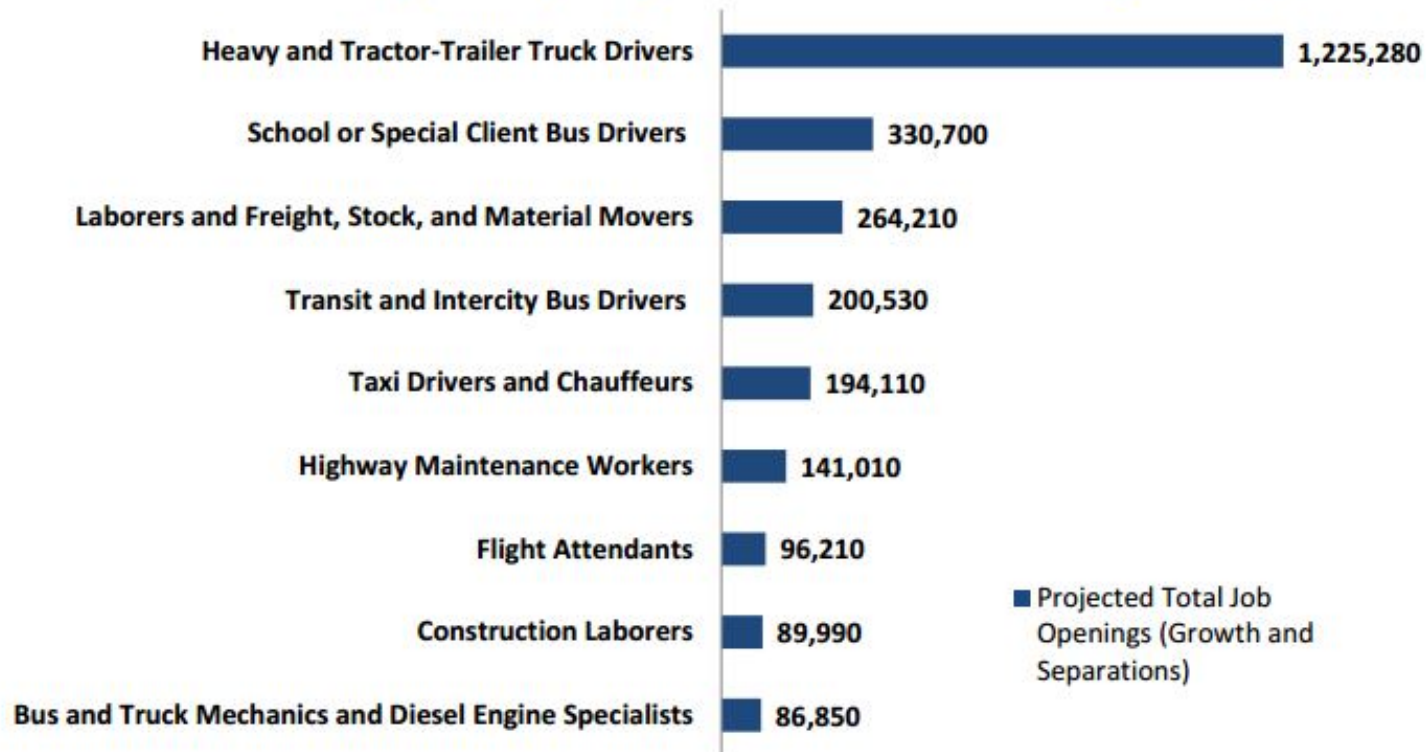
For More Information

- Go! Exploring the world of transportation— www.go-explore-trans.org
- The Federal Highway Administration— www.fhwa.dot.gov
- The Institute of Transportation Engineers— www.ite.org
- Fast Forward: Enhancing Awareness of Transportation Careers— burl.co/20A7F01#.Ub83fbYT0t4.gmail

Net transportation job growth in all but two states; North Dakota - highest % growth



Heavy Truck Drivers, Bus Drivers, Laborers, Taxi Drivers and Highway Maintenance Workers will have the largest projected 2012-22 job openings



Tribal Transportation Scholarship

- \$1,000 scholarship awarded to an outstanding Native American student and incoming freshman
- Funded through Mountain Plains Consortium through the University Transportation Centers program.
 - Must be enrolled in engineering, economics or agriculture field of study
 - Must be enrolled tribal member

Statewide Traffic Safety Initiative

- Replication of MT DOT 'SOAR' program
- The goal is to reduce Native American traffic fatalities
- **5.5% of ND pop. With 7.2% of crash fatalities, in 2015.**
- ND STAR (Safely Traveling All Roads)
 - Primary focus is impaired driving/seatbelt use
 - Working on funding requirements

Newsletter & Listserv

- Monthly publication that includes opportunities and news related to tribal transportation safety & outreach.
- Contact NeTia Bauman via email at netia.Richards@ndsu.edu to be added to the distribution list

THANK YOU!

- Questions?
- Contact Info:

NeTia Bauman
Tribal Outreach Program Coordinator
UGPTI/NDSU

Netia.Richards@ndsu.edu

(M): 701-680-8079