

# Devils Lake Community Center Survey: 2002

April 2002



North Dakota State Data Center  
Department of Agribusiness and Applied Economics  
North Dakota State University  
IACC Building, Room 424  
Fargo, North Dakota 58105-5636

## **Forward**

---

The purpose of this study was to learn more about residents' interests in and the utilization of a possible community center in Devils Lake, North Dakota.

## **Acknowledgments**

Special thanks are extended to Chuck Sanderson and members of the Lake Region Community Conservation Project for their valuable input and guidance in the survey design.

## **North Dakota State Data Center Contributors**

Dr. Richard Rathge, Director  
Kay Olson  
Mandy Clemenson  
Ramona Danielson  
Stephanie Noehl

**North Dakota State Data Center  
Department of Agribusiness and Applied Economics  
North Dakota State University  
IACC Building, Room 424  
Fargo, North Dakota 58105-5636  
Ph: (701) 231-7980  
URL: <http://www.ndsu.edu/sdc>**

**April 2002**

## Executive Summary

---

A survey of residents living in Ramsey County of North Dakota was conducted during the month of February, 2002. The purpose of the study was to gain insight into area residents' interests in and utilization of a possible multi-purpose community center in Devils Lake, North Dakota. A total of 1,000 surveys were mailed to randomly selected residents of Ramsey County. The results of the survey are found below. The results were separated into the following sections: purpose, location, management, funding, and demographics.

### SURVEY RESULTS

#### *Purpose*

- ▶ Respondents overwhelmingly agreed that the proposed Community Center should serve multiple functions.
  - # Eighty-three percent indicated it should meet the recreational needs of youth and adults.
  - # Sixty-nine percent indicated it should be used for activities other than just recreational activities such as a place for meeting/seminars, youth centered activities, conventions and concerts.
- ▶ Most respondents agreed that a community center would be an asset to the city of Devils Lake and should be used to promote Devils Lake through such things as conventions, seminars, the idea of keeping people in the area.
- ▶ Most respondents indicated that the community center should provide a place where youth can have access to educational services (tutors, etc) after schools hours. However, the vast majority (75 percent) indicated that there should be a balance between scheduled school activities and activities for youth and families.
- ▶ Overall, the majority of respondents agreed that their household would use a community center for activities. However, this opinion varied significantly depending on whether their household had children younger than 18.
  - # Nearly three-fourths of households with children younger than 18 indicated they would likely use a community center for activities.
  - # In contrast, less than half of the households without children younger than 18 would likely use a community center for activities.

#### *Location*

- ▶ A near majority of respondents agreed that a community center should be centrally located within the city of Devils Lake. However, respondents were split on whether a community center should be attached to another public facility.
  - # Of those who indicated the community center should be attached to another public facility (19.3 percent of respondents), schools were the most frequent suggestion.

## **Management**

- ▶ Residents' opinions regarding the management of a community center were very mixed. No clear majority of respondents felt that management of a community center should be with one entity.
  - # If the community center were managed by one entity, the top three suggestions for managing the community center were the city commission, the city of Devils Lake, and the park board/park district.
- ▶ Similarly, residents' opinions of having multiple entities manage the community center were very mixed. Respondents were nearly evenly split between support, non-support, and no opinion.
  - # If management of a community center was to be by multiple entities, respondents reported their top two suggestions were the city commission and the park district.

## **Funding**

- ▶ Residents' opinions regarding funding of the community center also were very mixed. There was not a clear consensus on how respondents felt about tax dollars being used to construct a community center if grant funds are not available. However, opinions differed significantly by income level of respondents.
  - # Respondents whose annual household income was more than \$40,000 were more likely to indicate that tax dollars should be used to construct a community center if grant funds were not available than respondents whose annual household income was \$40,000 or less.
- ▶ Respondents almost equally agreed or disagreed that if utilization fees did cover the operational costs of a community center, tax dollars should be used.
- ▶ Similarly, residents were almost evenly split in their opinion of whether they would donate to the construction of a community center. Opinions varied significantly by income level of respondents and whether the respondent had children younger than 18.
  - # Of respondents who had an annual household income of more than \$40,000, a majority were willing to make a donation to the construction of a community center. Less than a quarter of those who reported having an income of \$40,000 or less were willing to make a donation to construction of a community center.
  - # Of respondents who had children younger than 18, approximately 47 percent were willing to make a donation to the construction of a community center. Less than a third of those who reported not having children younger than 18 were willing to make a donation to the construction of a community center.
- ▶ Finally, residents were evenly split in their opinion of whether they would make a donation to a foundation for the day-to-day operations of a community center. Again, opinions varied significantly by whether or not respondents had children younger than 18.
  - # Respondents with children younger than 18 were more likely to make a donation to the foundation than those who did not have children younger than 18.

## ***Demographics***

- ▶ Nearly three-fourths of respondents were married.
- ▶ Approximately 56 percent of respondents were male.
- ▶ More than 85 percent of respondents owned a house.
- ▶ Nearly 95 percent of respondents were white.
- ▶ More than 47 percent of respondents had an annual household income before taxes of more than \$40,000.
- ▶ Fifty-seven percent of respondents indicated their source of income was wages.
- ▶ Approximately 61 percent of respondents indicated they did not have children younger than 18.
- ▶ More than 53 percent of respondents have lived in Devils Lake for more than 30 years.

## Table of Contents

---

List of Figures .....	ii
List of Tables .....	iii
List of Appendix Tables .....	iv
Introduction .....	v
Study Objectives .....	vi
Methodology .....	vi
Analysis .....	vi
Survey Results .....	1
Purpose .....	2
Location .....	9
Management .....	11
Funding .....	13
Demographics .....	18
Appendix Tables .....	23
Additional Comments .....	41
Survey Instrument .....	44

## List of Figures

---

Figure 1. A Multi-Purpose Community Center Must Meet the Recreational Needs of Youth . . . . .	2
Figure 2. A Multi-Purpose Community Center Must Meet the Recreational Needs of Adults . . . . .	2
Figure 3. A Community Center Must Be Used For Activities Other Than Just Recreational Activities . . .	3
Figure 4. A Multi-Purpose Community Center Would Be An Asset to the City of Devils Lake . . . . .	5
Figure 5. A Community Center Should Be Used to Promote Devils Lake . . . . .	5
Figure 6. A Community Center Should Provide a Place Where Youth Can Have Access to Educational Services (Tutors, etc.) After School Hours . . . . .	6
Figure 7. There Should Be a Balance at the Community Center Between Scheduled School Activities and Activities for Youth and Families . . . . .	7
Figure 8. My Household Would Use a Community Center For Activities . . . . .	7
Figure 8a. My Household Would Use a Community Center For Activities, By Whether Respondent Had Children Under the Age of 18 . . . . .	8
Figure 9. A Community Center Should Be Centrally Located Within the City of Devils Lake . . . . .	9
Figure 10. A Community Center Should Be Attached to Another Public Facility . . . . .	9
Figure 11. Management of a Community Center Should Be With One Entity . . . . .	11
Figure 12. Management of a Community Center Should Be With Multiple Entities . . . . .	12
Figure 13. Multiple Entities That Should Manage Community Center . . . . .	12
Figure 14. If Grant Funds Are Not Available to Construct a Community Center, Tax Dollars Should Be Used . . . . .	13
Figure 14a. If Grant Funds Are Not Available to Construct a Community Center, Tax Dollars Should Be Used, By Annual Household Income Before Taxes . . . . .	14
Figure 15. If Utilization Fees Do Not Cover the Operational Costs of a Community Center, Tax Dollars Should Be Used . . . . .	14
Figure 16. I Would Make a Donation to the Construction of a Community Center . . . . .	15
Figure 16a. I Would Make a Donation to the Construction of a Community Center, By Annual Household Income Before Taxes . . . . .	15
Figure 16b. I Would Make a Donation to the Construction of a Community Center, By Whether the Respondent Has Children Younger Than 18 . . . . .	16
Figure 17. I Would Make a Donation to a Foundation Which Would Be Used For the Day-to-Day Operations of a Community Center . . . . .	16
Figure 17a. I Would Make a Donation to a Foundation Which Would Be Used For the Day-to-Day Operations of a Community Center, By Whether the Respondent Has Children Younger than 18 . . . . .	17
Figure 18. Marital Status . . . . .	18
Figure 19. Gender . . . . .	18
Figure 20. Type of Housing . . . . .	19
Figure 21. Race/Ethnicity . . . . .	19
Figure 22. Annual Household Income Before Taxes . . . . .	20
Figure 23. Source of Income . . . . .	20
Figure 24. Respondents With Children Younger Than 18, With Children's Ages . . . . .	21
Figure 25. Length of Time Lived in Devils Lake Area . . . . .	22

## List of Tables

---

Table 1. Suggested Activities the Community Center Needs to Provide .....	4
Table 2. Suggestions for How the Community Center Could Promote Devils Lake .....	6
Table 3. How Respondent's Household Would Use the Community Center .....	8
Table 4. Respondent's Suggestions for Other Facility Attached to the Community Center .....	10
Table 5. Respondent's Suggestions of Community Center Management .....	11



## List of Appendix Tables

---

Appendix Table 1. A Multi-Purpose Community Center Must Meet the Recreational Needs of Youth . . .	24
Appendix Table 2. A Multi-Purpose Community Center Must Meet the Recreational Needs of Adults . . .	24
Appendix Table 3. A Community Center Must Be Used For Activities Other Than Just Recreational Activities . . . . .	24
Appendix Table 4. “Other” Suggestions for Activities the Community Center Needs to Provide . . . . .	25-26
Appendix Table 5. A Multi-Purpose Community Center Would Be An Asset to the City of Devils Lake . . .	26
Appendix Table 6. A Community Center Should Be Used to Promote Devils Lake . . . . .	27
Appendix Table 7. “Other” Suggestions for How the Community Center Could Promote Devils Lake . . . . .	27-28
Appendix Table 8. A Community Center Should Provide a Place Where Youth Can Have Access to Educational Services (Tutors, etc.) After School Hours . . . . .	28
Appendix Table 9. There Should Be a Balance at the Community Center Between Scheduled School Activities and Activities for Youth and Families . . . . .	29
Appendix Table 10. My Household Would Use a Community Center For Activities . . . . .	29
Appendix Table 10a. My Household Would Use a Community Center For Activities, By Whether the Respondent Has Children Younger Than 18 . . . . .	29
Appendix Table 11. “Other” Suggestions for How Respondent’s Household Would Use the Community Center . . . . .	30
Appendix Table 12. A Community Center Should Be Centrally Located Within the City of Devils Lake . . .	31
Appendix Table 13. A Community Center Should Be Attached to Another Public Facility . . . . .	31
Appendix Table 14. “Other” Suggestions for Other Facility Attached to the Community Center . . . . .	32
Appendix Table 15. Management of a Community Center Should Be With One Entity . . . . .	32
Appendix Table 16. “Other” Suggestions for Entity That Should Manage the Community Center . . . . .	33
Appendix Table 17. Management of a Community Center Should Be With Multiple Entities . . . . .	33
Appendix Table 18. Entities That Should Manage the Community Center . . . . .	34
Appendix Table 18a. “Other” Responses Regarding Which Entities Should Manage the Community Center . . . . .	34
Appendix Table 19. “Other” Entities That Should Manage the Community Center . . . . .	34
Appendix Table 20. If Grant Funds Are Not Available to Construct a Community Center, Tax Dollars Should Be Used . . . . .	35
Appendix Table 20a. If Grant Funds Are Not Available to Construct a Community Center, Tax Dollars Should Be Used, By Annual Household Income Before Taxes . . . . .	35
Appendix Table 21. If Utilization Fees Do Not Cover the Operational Costs of a Community Center, Tax Dollars Should Be Used . . . . .	35
Appendix Table 22. I Would Make a Donation to the Construction of a Community Center . . . . .	36
Appendix Table 22a. I Would Make a Donation to the Construction of a Community Center, By Annual Household Income Before Taxes . . . . .	36
Appendix Table 22b. I Would Make a Donation to the Construction of a Community Center, By Whether Respondent Has Children Younger Than 18 . . . . .	36
Appendix Table 23. I Would Make a Donation to a Foundation Which Would Be Used For the Day-to-Day Operations of a Community Center . . . . .	37
Appendix Table 23a. I Would Make a Donation to a Foundation Which Would Be Used For the Day-to-Day Operations of a Community Center, By Whether Respondent Has Children Younger Than 18 . . . . .	37
Appendix Table 24. Marital Status . . . . .	37
Appendix Table 25. Gender . . . . .	38
Appendix Table 26. Type of Housing . . . . .	38
Appendix Table 27. Race/Ethnicity . . . . .	38
Appendix Table 28. Annual Household Income Before Taxes . . . . .	39
Appendix Table 29. Source of Income . . . . .	39
Appendix Table 29a. Other Sources of Income . . . . .	39
Appendix Table 30. Children Younger Than 18 Years of Age . . . . .	40
Appendix Table 31. Ages of Children Younger Than 18 . . . . .	40
Appendix Table 32. Number of Years Lived in Devils Lake Area . . . . .	40

## **Introduction**

## Introduction

---

### Study Objectives

The purpose of this study was to gain insight into Ramsey County residents' perceived interest in, support of, and usage of a multi-purpose community center. The overarching goal is to give community leaders an understanding of how a community center could best meet the needs of area residents and their families.

### Methodology

A survey instrument was designed through the efforts of the Lake Region Community Conservation Project in collaboration with staff at the North Dakota State Data Center. The questionnaire was designed for electronic data input. Questionnaires were mailed to a random sample of 1,000 Ramsey County residents beginning in December of 2001. The list of names was obtained from current telephone directories. The collection period ended in February 2002 with 196 useable surveys returned. This allows for a generalizable survey of residents in the county with an error rate of less than 6 percent. Surveys collected after the cut-off date were not included in the data analysis.

### Analysis

The analysis was conducted in two parts. First, frequencies for all questions with the exception of open-ended questions were computed. We checked to see if responses differed by two independent variables; whether or not the respondent had children younger than 18 and the respondents' annual household income before taxes. Since the distribution of household income was fairly concentrated, we combined incomes into two categories for testing purposes: more than \$40,000 or \$40,000 or less. Responses differed significantly in five of the questions at the  $p < .05$  level.

Second, the open-ended questions were thematically coded by the State Data Center Staff. These included explanations of activities the community center needs to provide, how the community center could promote Devils Lake, how the respondents' household would use the community center, and explanations of other responses.

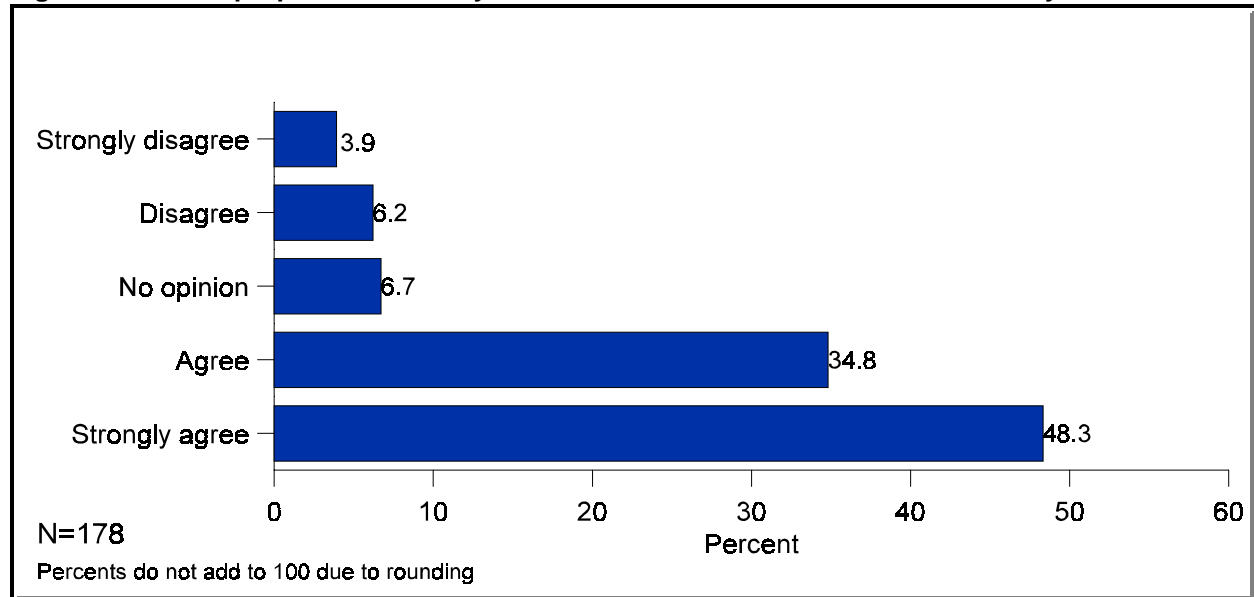
Missing data were not included in the analysis. However, the number missing for each question are provided in the appendix tables at the rear of this report.

## Survey Results

## Purpose

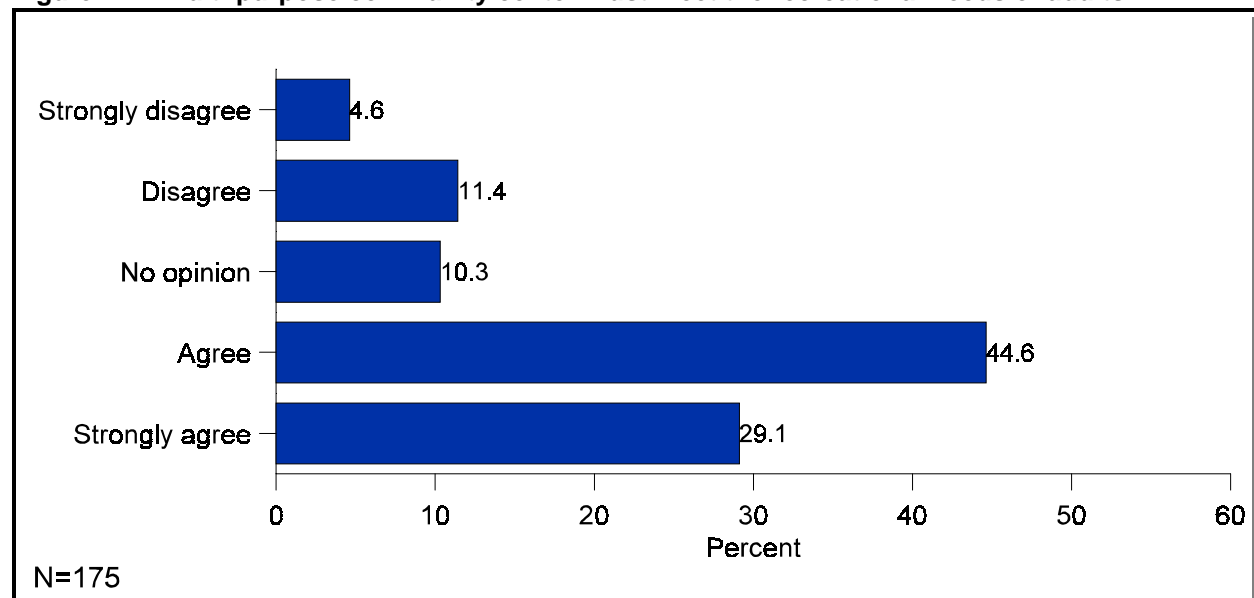
- Approximately 83 percent of respondents agreed that a multi-purpose community center must meet the recreational needs of youth (Figure 1, Appendix Table 1).

**Figure 1. A multi-purpose community center must meet the recreational needs of youth**



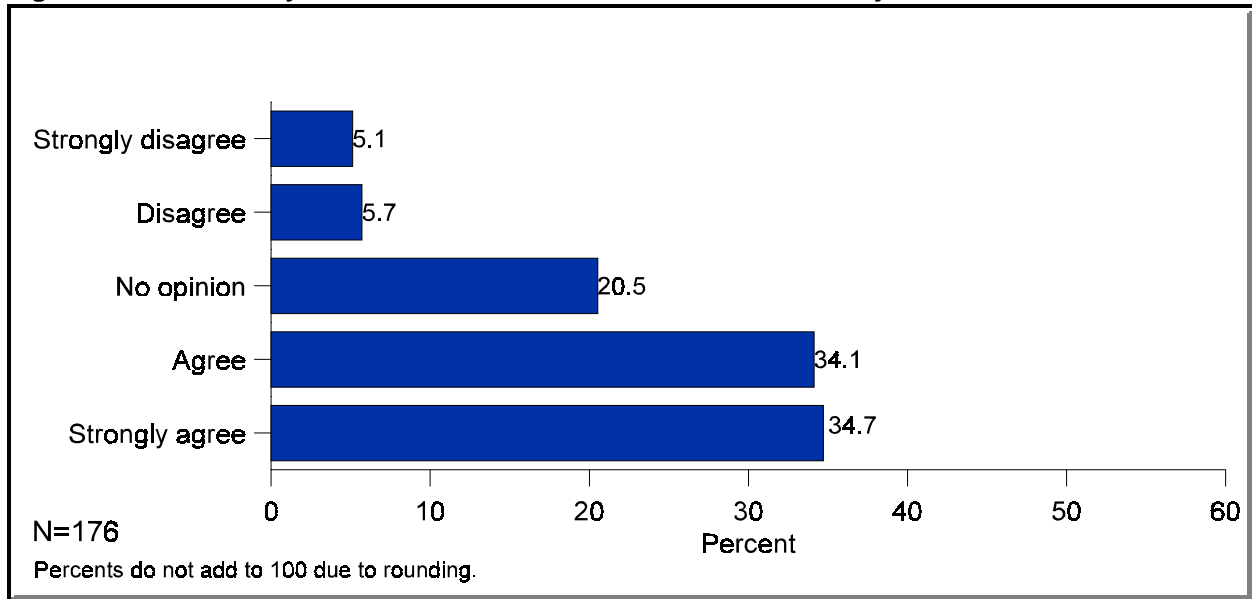
- Nearly 74 percent of respondents agreed that a multi-purpose community center must meet the recreational needs of adults (Figure 2, Appendix Table 2).

**Figure 2. A multi-purpose community center must meet the recreational needs of adults**



- Approximately 69 percent of respondents agreed that a community center must be used for activities other than just recreational activities (Figure 3, Appendix Table 3).

**Figure 3. A community center must be used for activities other than just recreational activities**



- Slightly more than one-third of respondents suggested the community center should provide activities including meetings/seminars, youth centered activities, conventions, and concerts (Table 1).

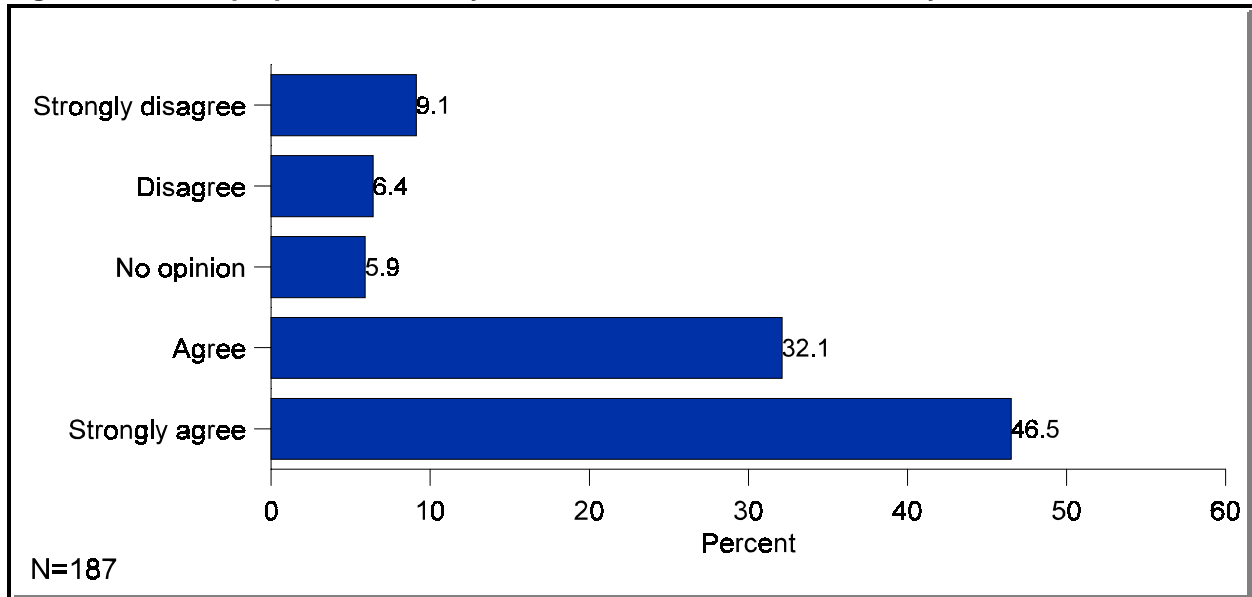
**Table 1. Suggested activities the community center needs to provide**

Suggested activities to provide	Response	
	Number	Percent
Meetings/seminars	28	11.5
Youth centered activities	20	8.2
Conventions	20	8.2
Concerts/music	15	6.2
Dances	12	4.9
Recreational activities	11	4.5
Parties/receptions/banquets	10	4.1
Gym space/exercise equipment/fitness	8	3.3
Community events	8	3.3
Plays/theater	7	2.9
Family centered activities	7	2.9
Games	6	2.5
Don't need a community center	5	2.1
Track	5	2.1
Adult centered activities	5	2.1
Basketball court	4	1.6
Computer access	4	1.6
Fund raisers	4	1.6
Swimming pool	3	1.2
Volleyball court	3	1.2
Rollerblading	3	1.2
Reunions	3	1.2
Educational events	3	1.2
Other*	49	20.2
Total	243	100.0

\*Note: See Appendix Table 4 for "Other" responses

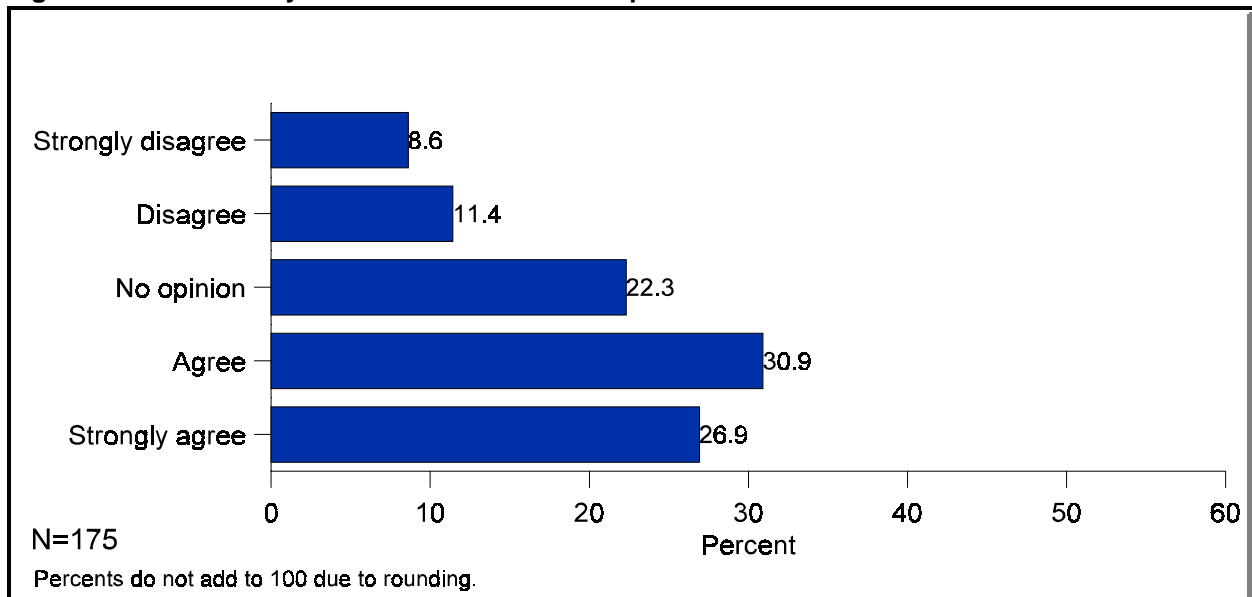
- Nearly 79 percent of respondents agreed that a multi-purpose community center would be an asset to the city of Devils Lake (Figure 4, Appendix Table 5).

**Figure 4. A multi-purpose community center would be an asset to the city of Devils Lake**



- Approximately 58 percent of respondents agreed that a community center should be used to promote Devils Lake (Figure 5, Appendix Table 6).

**Figure 5. A community center should be used to promote Devils Lake**





- Approximately 20 percent of respondents suggested the community center could promote Devils Lake through conventions and seminars. Seventeen percent of respondents said the community center could promote Devils Lake through keeping people in Devils Lake and/or drawing people to Devils Lake (Table 2).

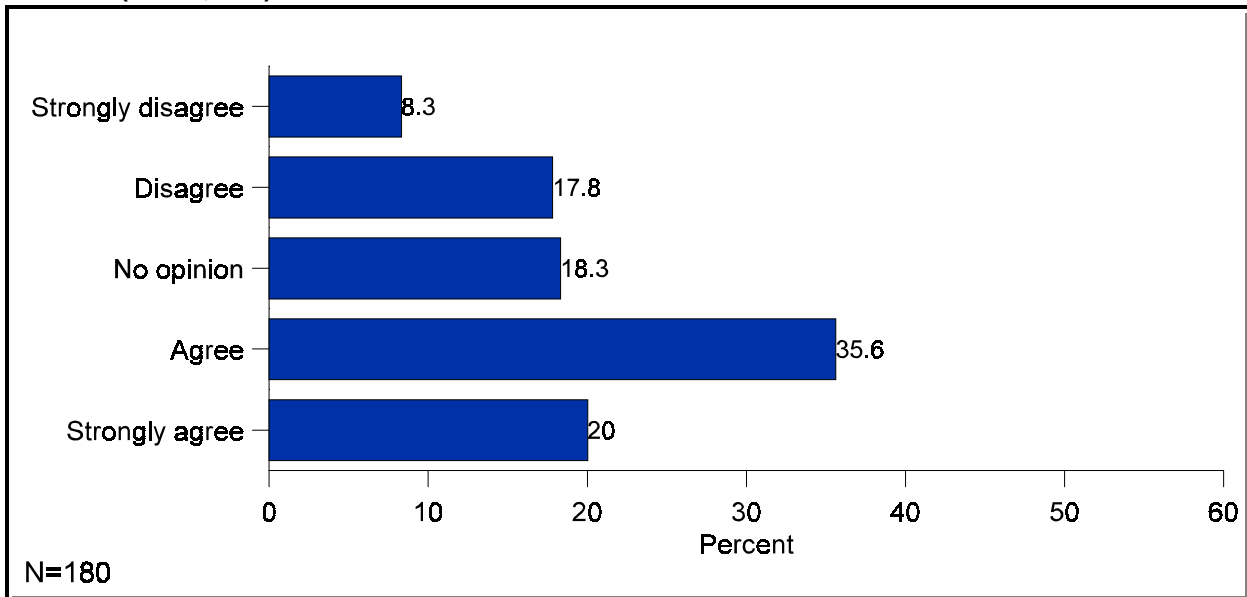
**Table 2. Suggestions for how the community center could promote Devils Lake**

Suggestions	Responses	
	Number	Percent
Conventions and seminars	19	20.2
Keep people in Devils Lake/draw people in to Devils Lake	16	17.0
Youth activities	11	11.7
Trade shows/expos	10	10.6
Sporting events	7	7.4
Don't need a community center	7	7.4
Other*	24	25.5
Total	94	100.0

Note: \*See Appendix Table 7 for "Other" responses

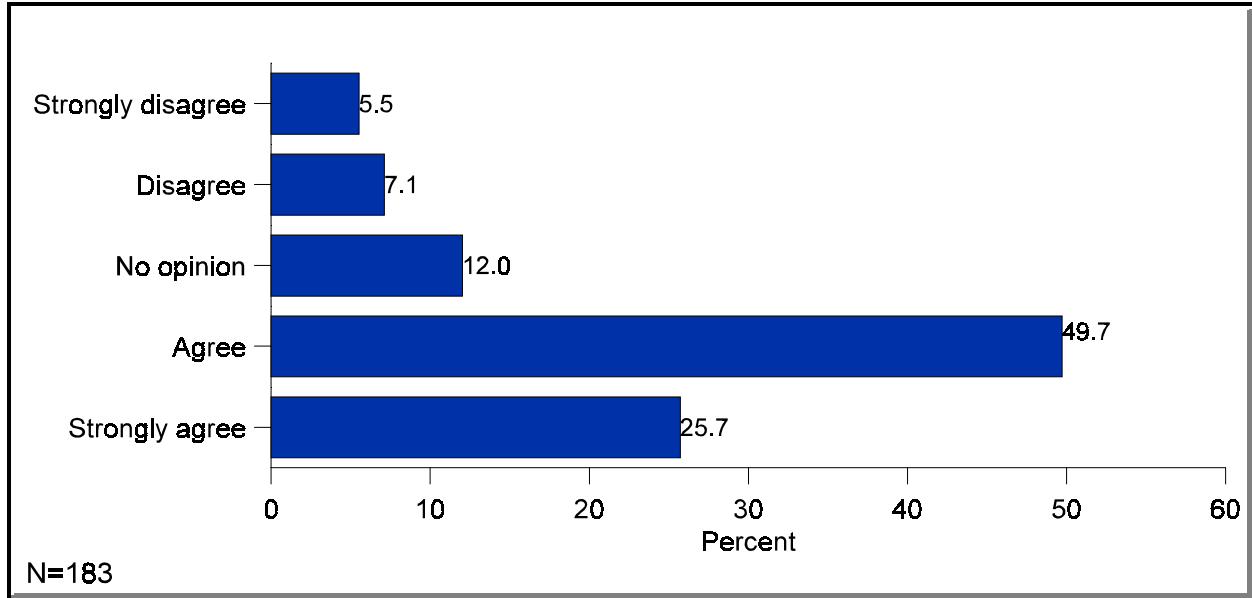
- Nearly 56 percent of respondents agreed that a community center should provide a place where youth can have access to educational services (tutors, etc.) after school hours (Figure 6, Appendix Table 8).

**Figure 6. A community center should provide a place where youth can have access to educational services (tutors, etc.) after school hours**



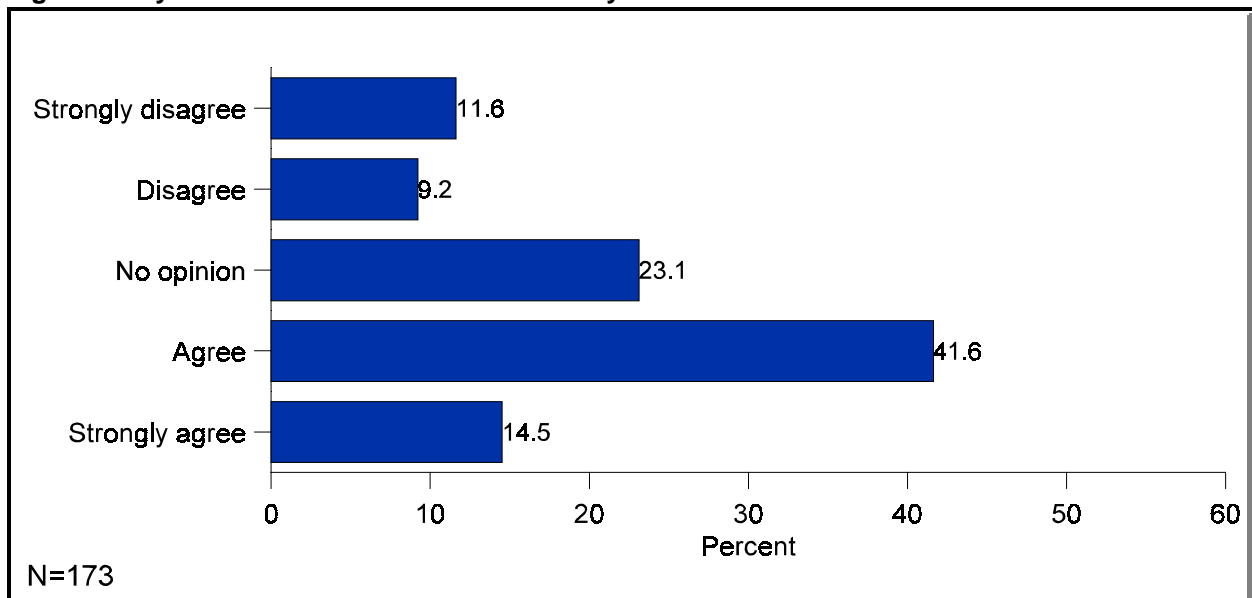
- More than 75 percent of respondents agree there should be a balance at the community center between scheduled school activities and activities for youth and families (Figure 7, Appendix Table 9).

**Figure 7. There should be a balance at the community center between scheduled school activities and activities for youth and families**



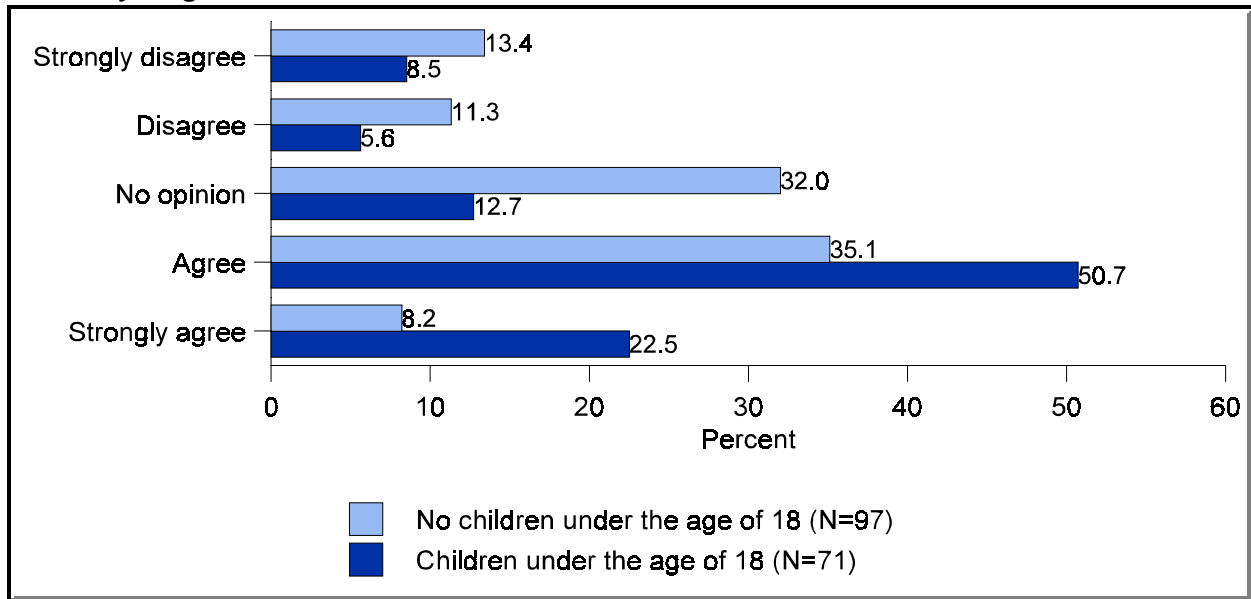
- Approximately 56 percent of respondents indicated their household would use a community center for activities (Figure 8, Appendix Table 10).

**Figure 8. My household would use a community center for activities**



- More than 73 percent of respondents with children under age 18 indicated that their household would use a community center for activities. This is significantly different ( $p < .05$ ) from those who did not have children younger than 18. Approximately 43 percent of respondents without children younger than 18 indicated their household would use a community center for activities (Figure 8a, Appendix Table 10a).

**Figure 8a. My household would use a community center for activities, by whether respondent had children younger than 18**



- Nearly 24 percent of respondents indicated their household would use the community center for sports/recreation (Table 3).

**Table 3. How respondent's household would use the community center**

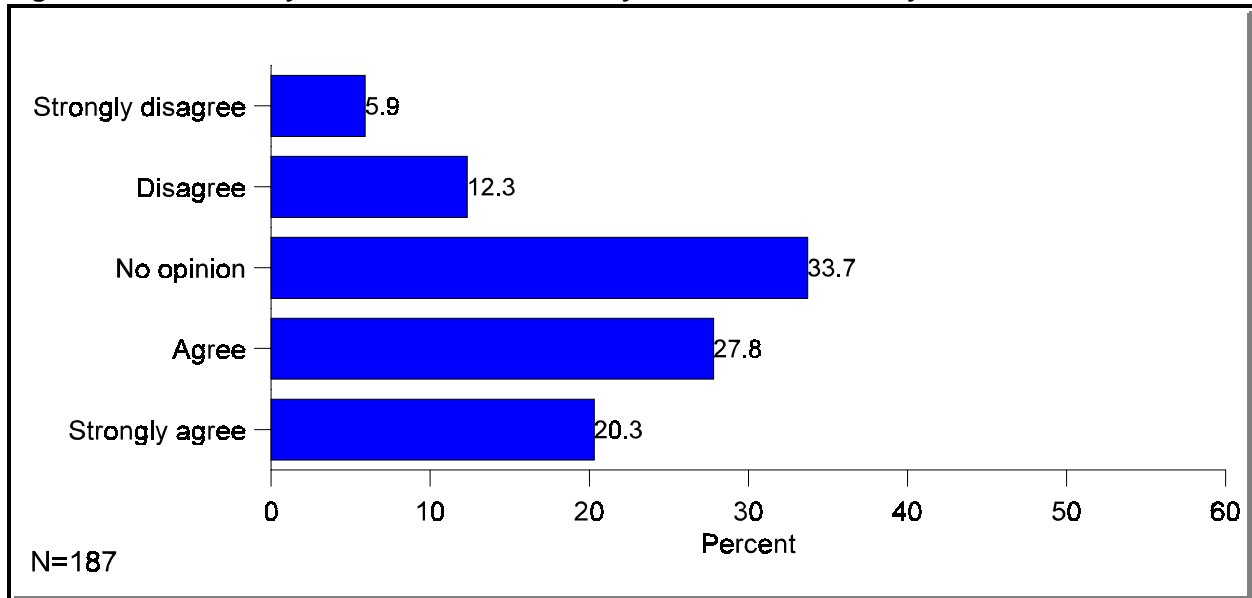
Suggestions for community center usage	Responses	
	Number	Percent
Sports/recreation	24	23.5
Various activities/depends on what is offered	17	16.7
Don't need a community center	12	11.8
Wouldn't use a community center	6	5.9
Youth activities	6	5.9
Meetings/seminars	5	4.9
Parties/banquets/receptions	4	3.9
Family activities	4	3.9
Games	3	2.9
Other*	21	20.6
Total	102	100.0

Note: \*See Appendix Table 11 for "Other" responses.

## Location

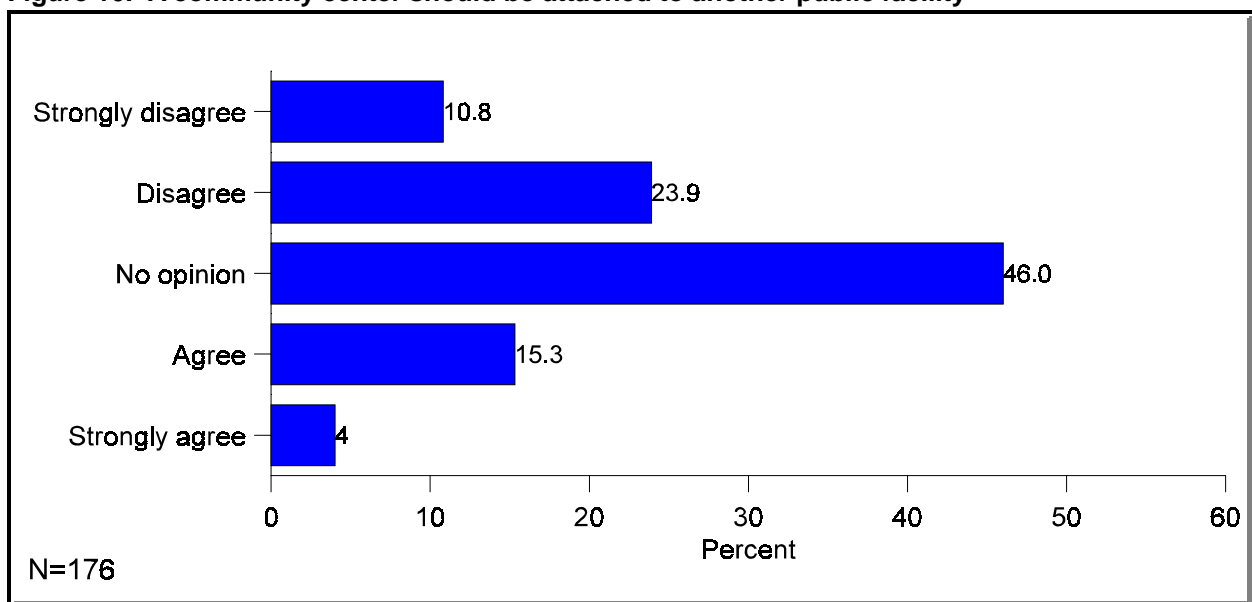
- Approximately 48 percent of respondents agreed that a community center should be centrally located within the city of Devils Lake (Figure 9, Appendix Table 12).

**Figure 9. A community center should be centrally located within the city of Devils Lake**



- The highest proportion of respondents (46.0 percent) had no opinion about whether the community center should be attached to another public facility. Of those who had an opinion, more disagreed (34.7 percent) than agreed (19.3 percent) that a community center should be attached to another public facility (Figure 10, Appendix Table 13).

**Figure 10. A community center should be attached to another public facility**



- Respondents' suggestions regarding what type of facility should be attached to the community center were mixed. Few people offered ideas. However, of those who responded, the most frequent suggestions were to keep the building free standing or to attach it to a school/high school. Other suggestions included concerns about parking and utilization of existing facilities (Table 4).

**Table 4. Respondent's suggestions for other facility attached to the community center**

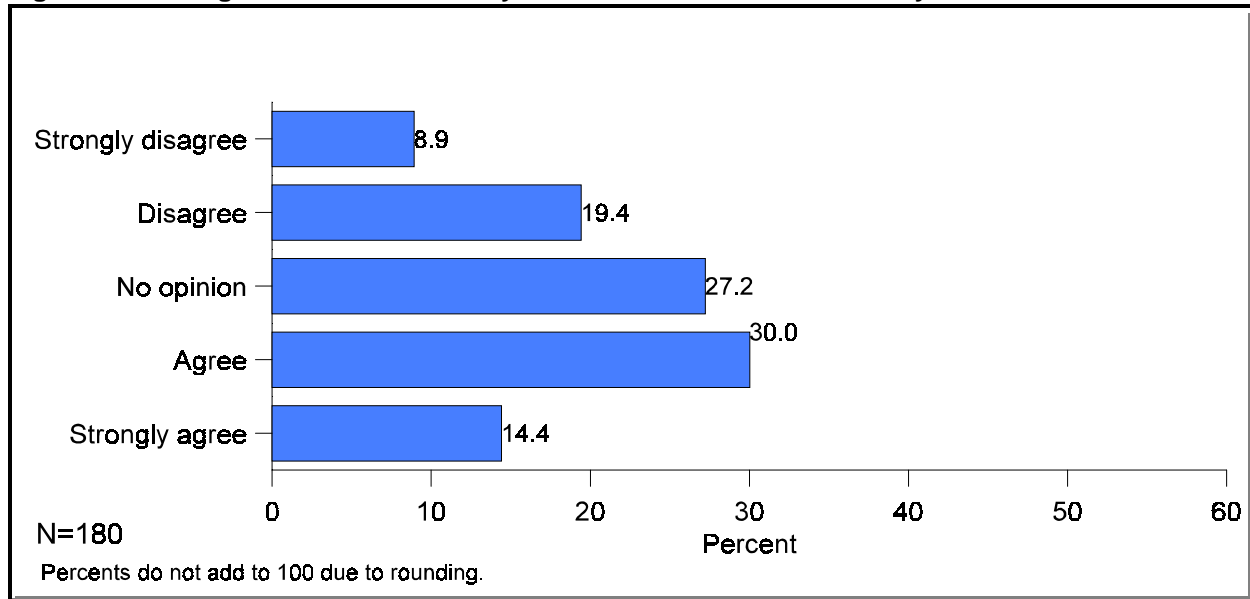
Suggestions for other attached facility	Responses	
	Number	Percent
Free standing	6	12.2
High school/school	6	12.2
Parking issues are important	5	10.2
Use a building that already exists	5	10.2
Don't need a community center	4	8.2
College/vo-tech	4	8.2
Library	3	6.1
Other*	16	32.7
Total	49	100.0

Note: \*See Appendix Table 14 for "Other" responses

## Management

- Residents' opinions regarding management of the community center were mixed. More than 44 percent of respondents agreed that management of a community center should be with one entity. However, more than a quarter (27.1 percent) of respondents indicated that they had no opinion about whether the management of a community center should be with one entity (Figure 11, Appendix Table 15).

**Figure 11. Management of a community center should be with one entity**



- Suggestions most frequently mentioned for who should manage the community center included the city commission (16 percent), the city of Devils Lake (15 percent) or the park board/park district (15 percent) (Table 5).

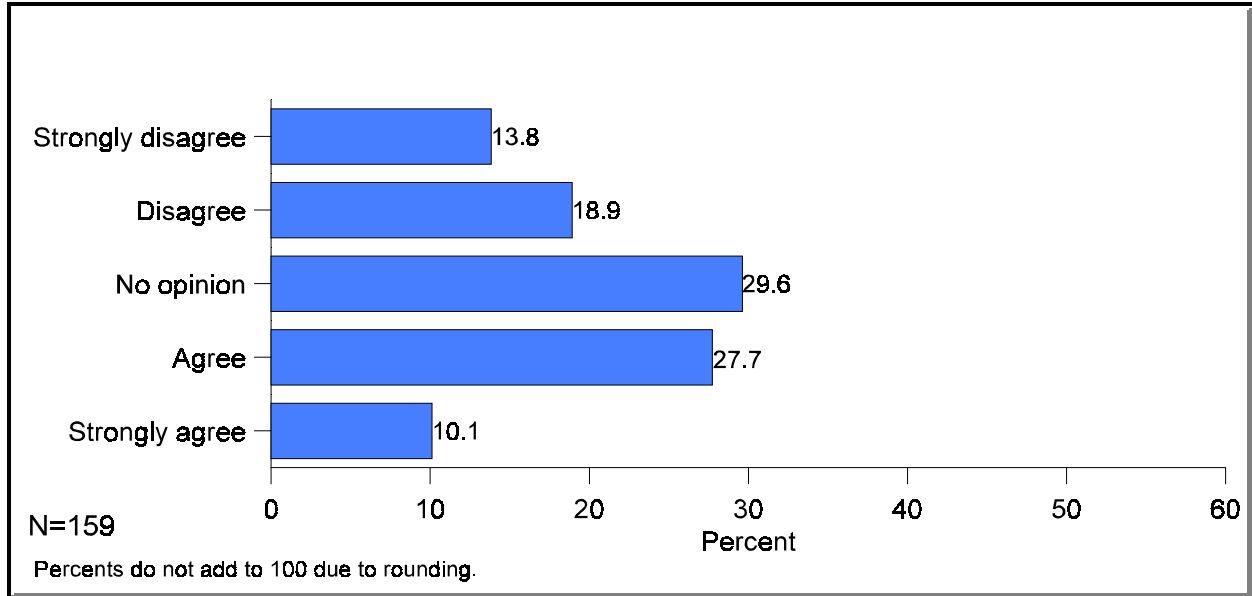
**Table 5. Respondents' suggestions of community center management**

Suggestions	Responses	
	Number	Percent
City commission	9	16.4
City of Devils Lake	8	14.5
Park board/park district	8	14.5
Independent	7	12.7
Public school	4	7.3
Don't know	3	5.5
County commission	2	3.6
Other*	14	25.5
Total	55	100.0

Note: \*See Appendix Table 16 for "Other" responses

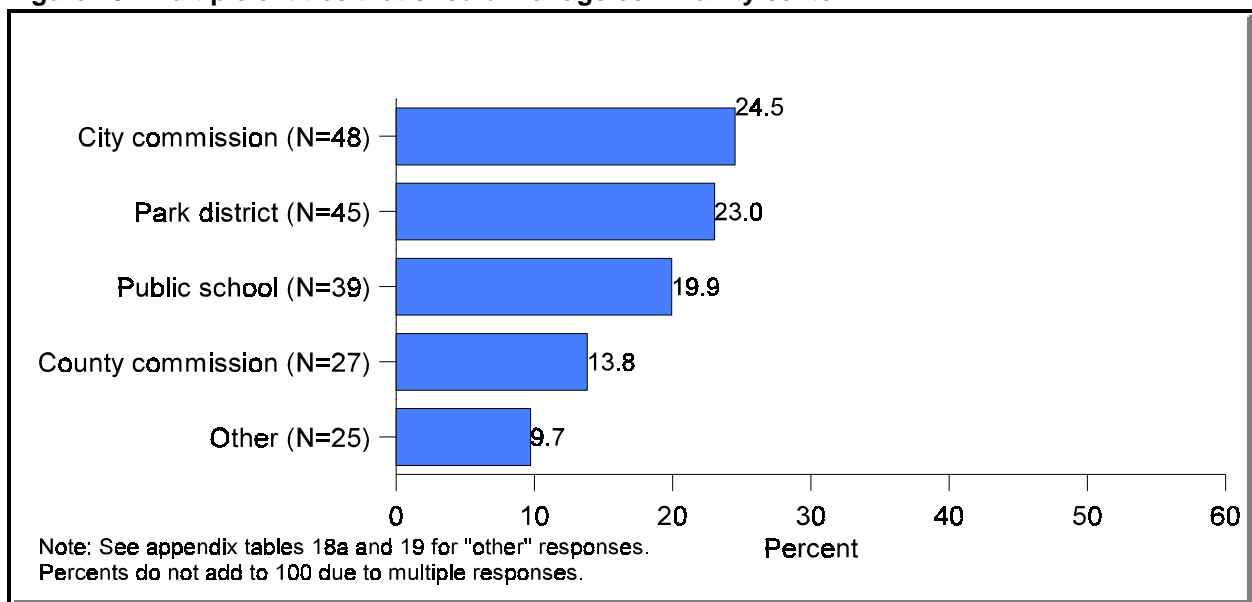
- Respondents were nearly evenly split regarding their opinion of whether management of a community center should be with multiple entities. Nearly 38 percent supported and one third (32 percent) did not support management by multiple entities, and nearly 30 percent had no opinion (Figure 12, Appendix Table 17).

**Figure 12. Management of a community center should be with multiple entities**



- Among respondents who “agreed” or “strongly agreed” that multiple entities should manage the community center, the top two responses of suggested entities that should manage the community center were the city commission (24.5 percent) and the park district (23.0 percent) (Figure 13, Appendix Table 18a, 19).

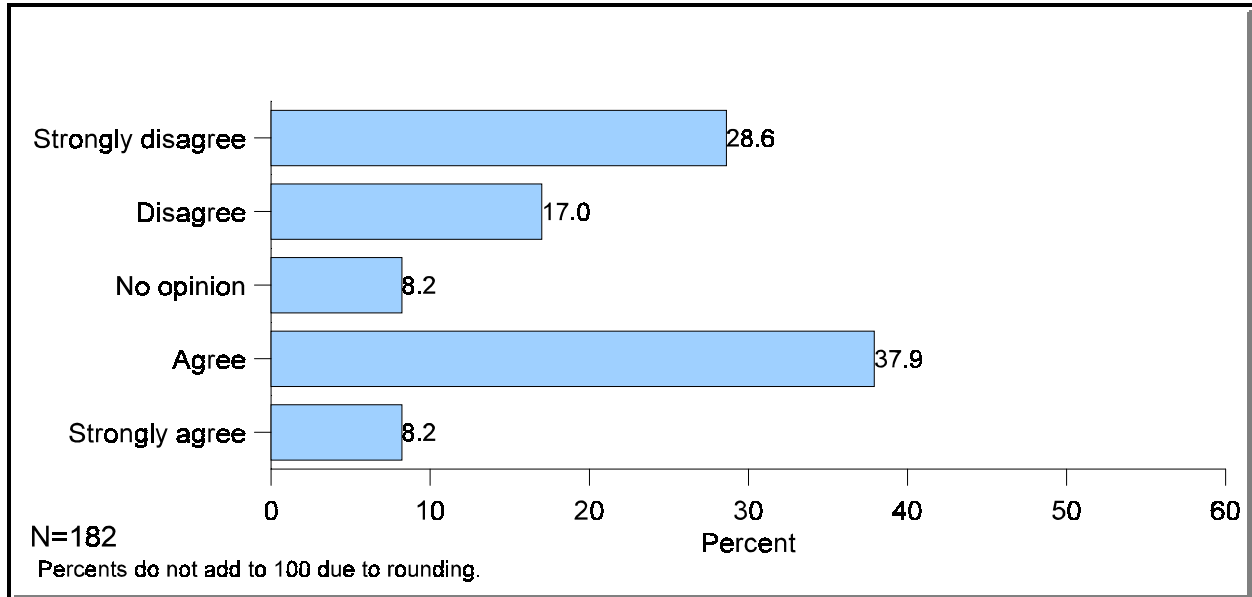
**Figure 13. Multiple entities that should manage community center**



## Funding

- Respondents were evenly split on whether tax dollars should be used to construct a community center if grant funds would not be available. Nearly equal proportions did and did not support the idea (approximately 46 percent) (Figure 14, Appendix Table 20).

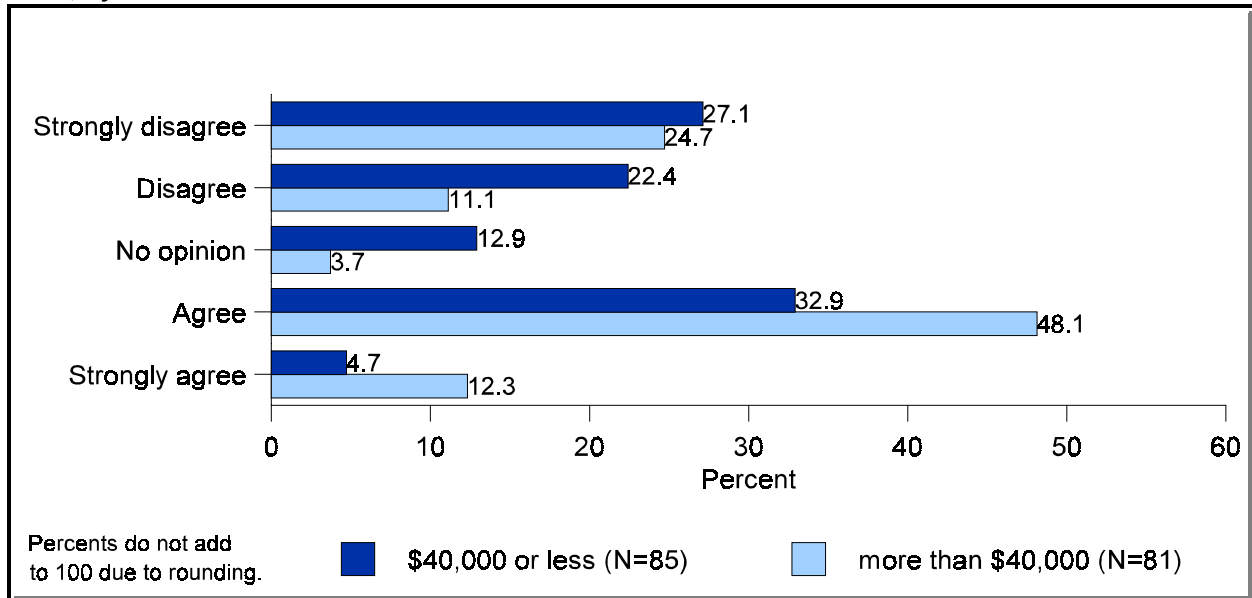
**Figure 14. If grant funds are not available to construct a community center, tax dollars should be used**





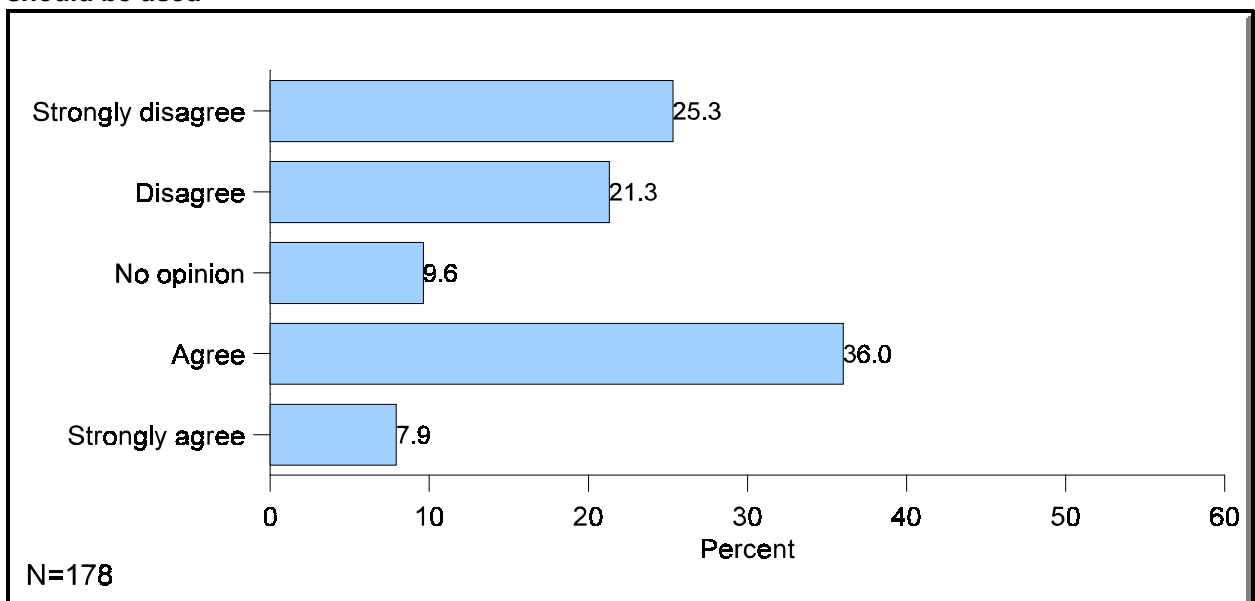
- Opinions regarding the use of tax dollars to fund the community center varied significantly by household income. Respondents whose annual household income was more than \$40,000 were more likely (60.4 percent) to indicate that tax dollars should be used to construct a community center than respondents whose annual household income was \$40,000 or less (37.6 percent) (Figure 14a, Appendix Table 20a).

**Figure 14a. If grant funds are not available to construct a community center, tax dollars should be used, by annual household income before taxes**



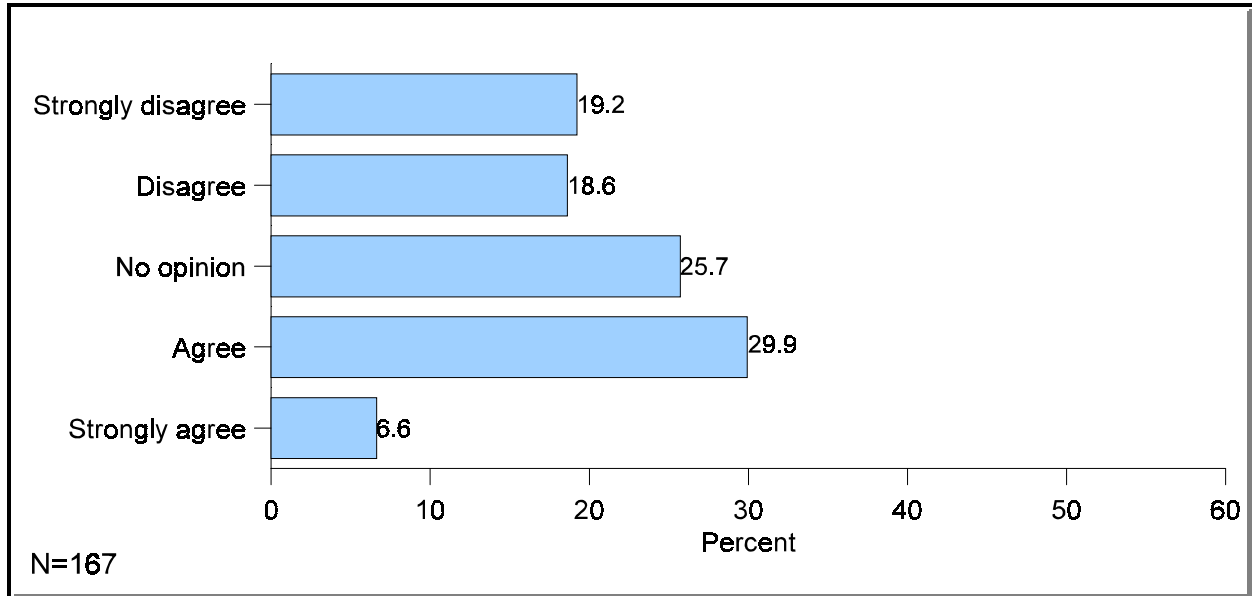
- Respondents were nearly evenly split in their opinion of using tax dollars if utilization fees did not cover operational costs of a community center. Roughly 47 percent disagreed while 44 percent agreed (Figure 15, Appendix Table 21).

**Figure 15. If utilization fees do not cover the operational costs of a community center, tax dollars should be used**



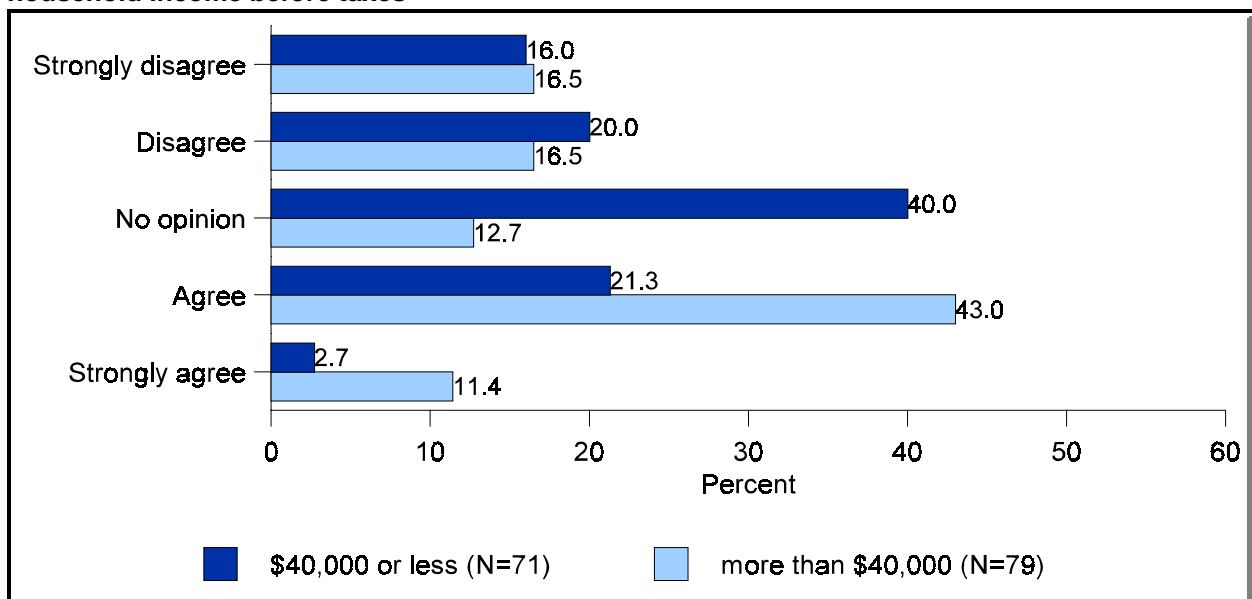
- Respondents' opinions were evenly split with regard to whether they would make a donation to the construction of a community center. Slightly more than one-third indicated they would likely donate (37 percent) while a similar proportion (38 percent) indicated they would not. More than a quarter of respondents (25.7 percent) had no opinion (Figure 16, Appendix Table 22).

**Figure 16. I would make a donation to the construction of a community center**



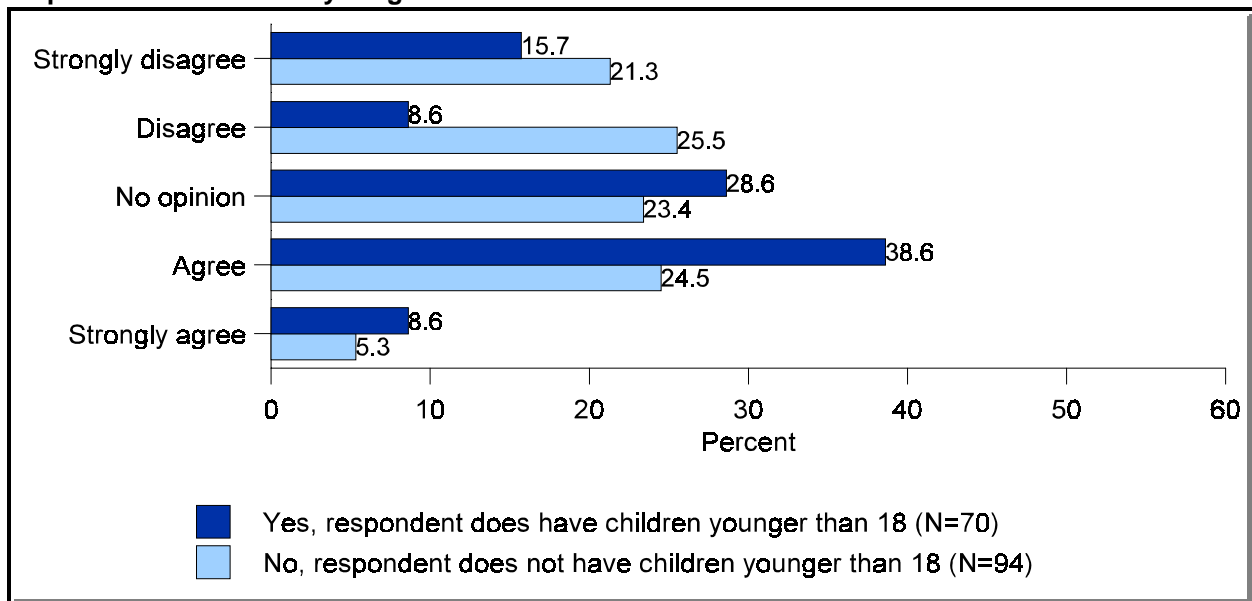
- The likelihood of donating to the construction of a community center differed significantly by household income. Residents with an annual household income of more than \$40,000 were more likely (54.4 percent) to make a donation to the construction of a community center than those with an annual income of \$40,000 or less (24.0 percent) (Figure 16a, Appendix Table 22a).

**Figure 16a. I would make a donation to the construction of a community center, by annual household income before taxes**



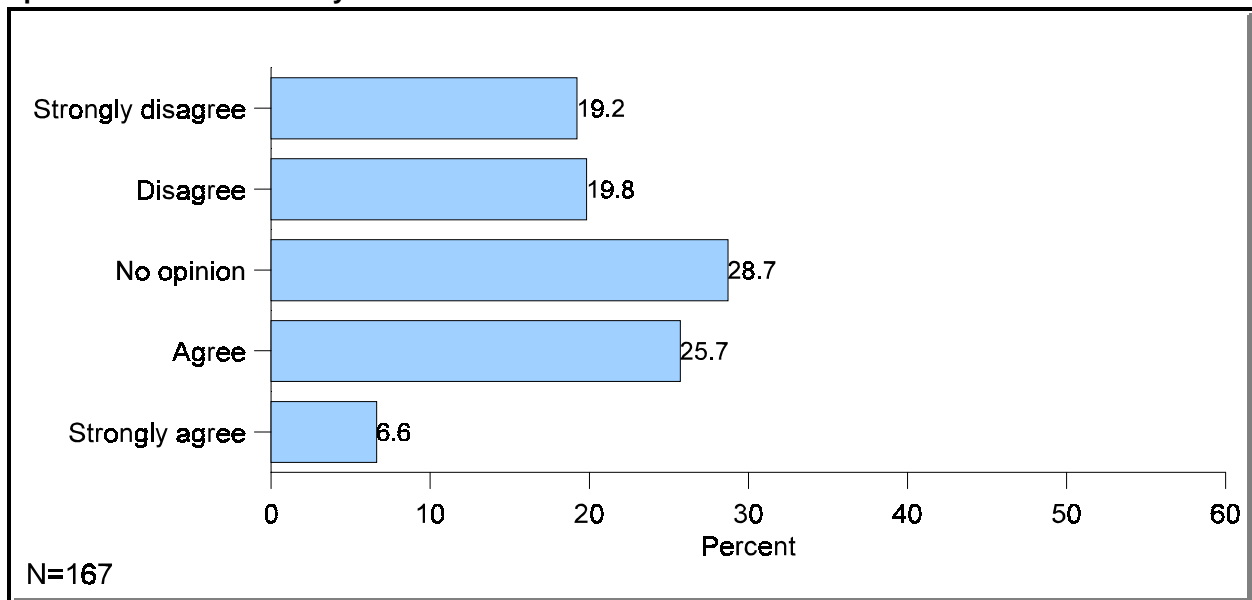
- The likelihood of donating to the construction of a community center also differed significantly by the presence of youth in the household. Residents with children younger than 18 were more likely (47.2 percent) to make a donation to the construction of a community center than those without children younger than 18 (29.8 percent) (Figure 16b, Appendix Table 22b).

**Figure 16b. I would make a donation to the construction of a community center, by whether the respondent has children younger than 18**



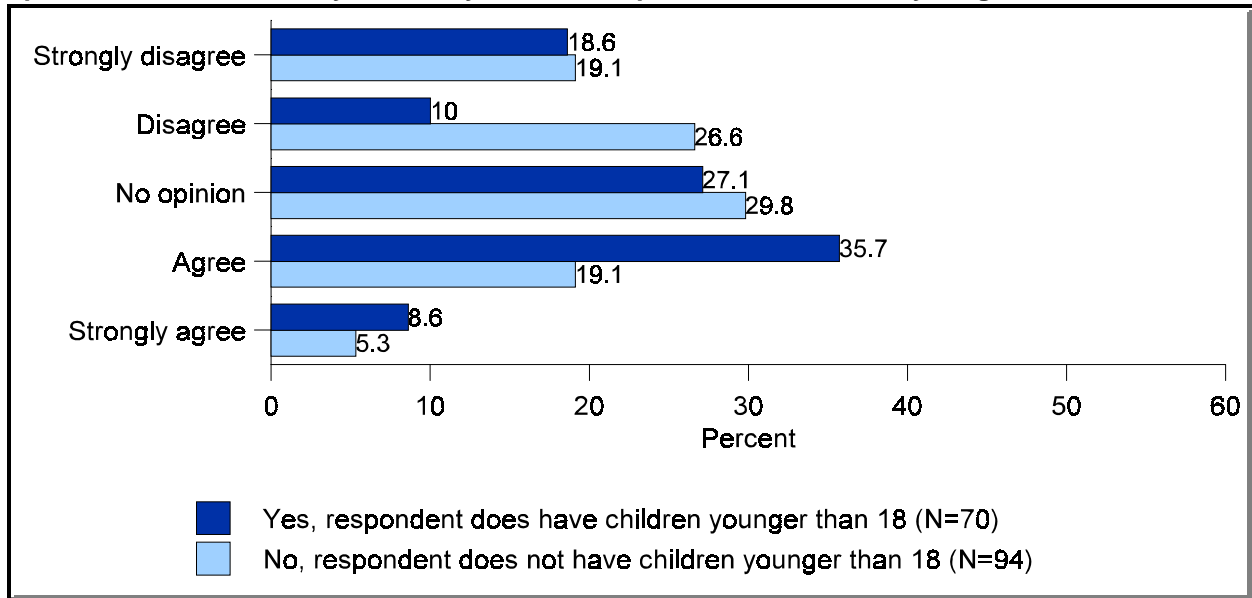
- Residents' willingness to make a donation to a foundation which would be used for the day-to-day operations of a community center was split. Roughly 32 percent indicated they would likely donate to the foundation while 39 percent indicated they would not donate. An additional 29 percent were undecided (Figure 17, Appendix Table 23).

**Figure 17. I would make a donation to a foundation which would be used for the day-to-day operations of a community center**



- Residents' opinions of whether they would donate to a foundation that would be used for the day-to-day operations of the community center differed significantly by the presence of youth in the household. Those households with children younger than 18 were more willing (44 percent) to make a donation to a foundation than those without children under 18 year of age (24 percent) (Figure 17a, Appendix Table 23a).

**Figure 17a. I would make a donation to a foundation which would be used for the day-to-day operations of a community center, by whether respondent has children younger than 18**

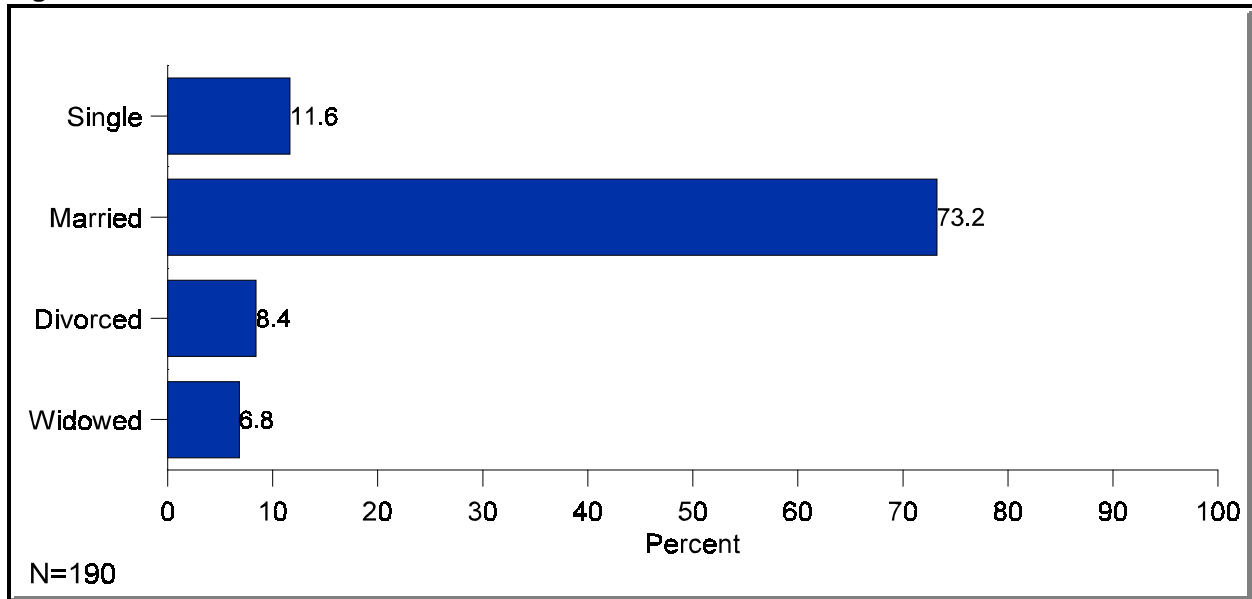


## Demographics

---

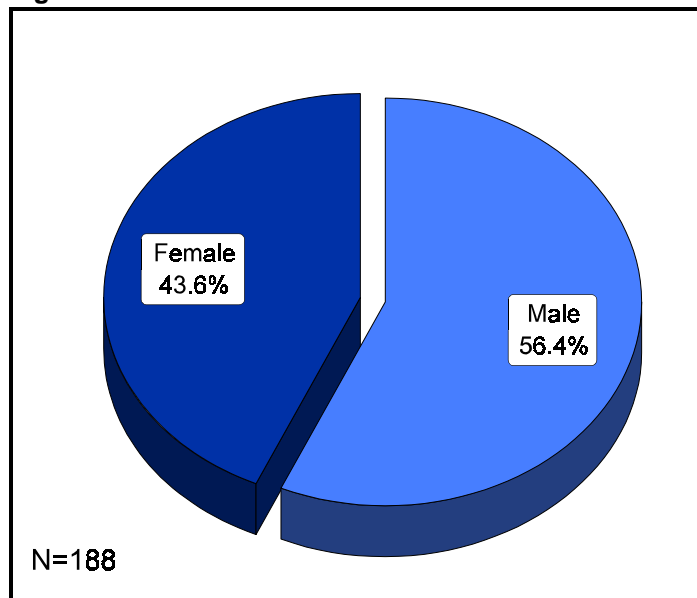
- Nearly 73 percent of respondents were married (Figure 18, Appendix Table 24).

**Figure 18. Marital status**



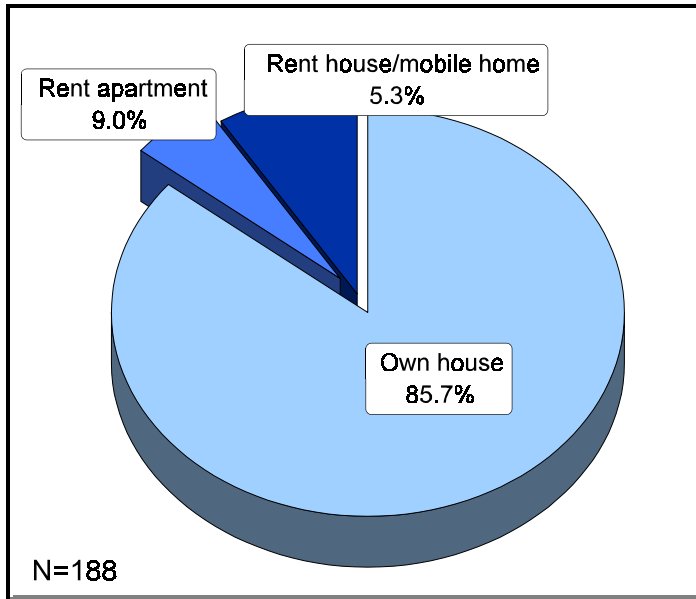
- Approximately 56 percent of respondents were male (Figure 19, Appendix Table 25).

**Figure 19. Gender**



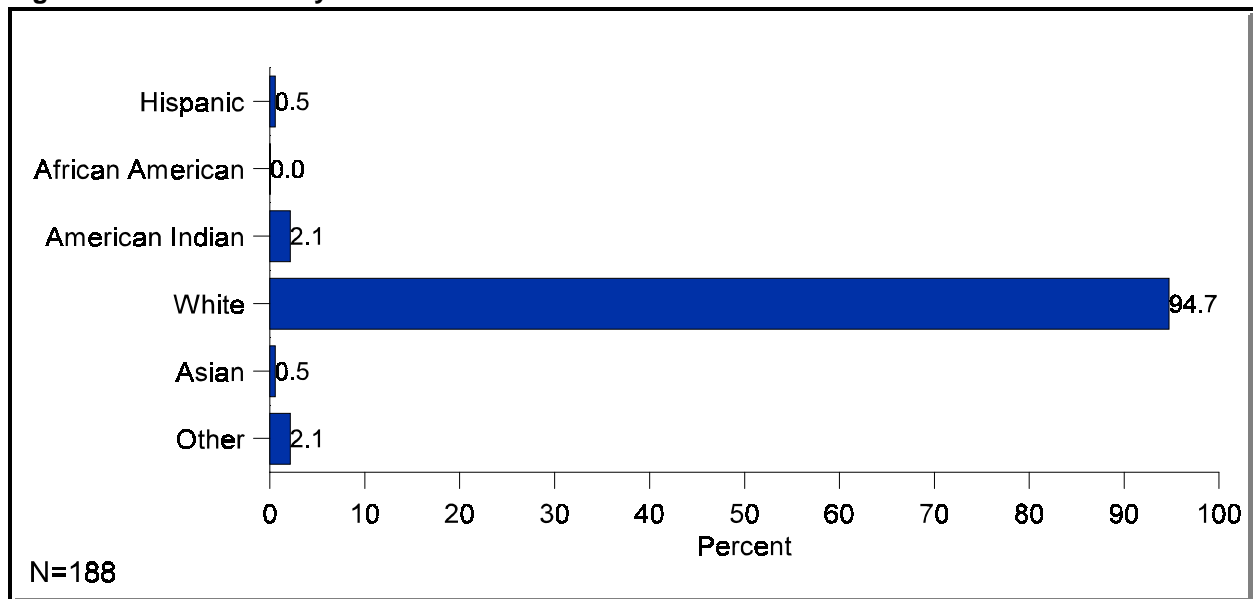
- Nearly 86 percent of respondents owned a house (Figure 20, Appendix Table 26).

**Figure 20. Type of housing**



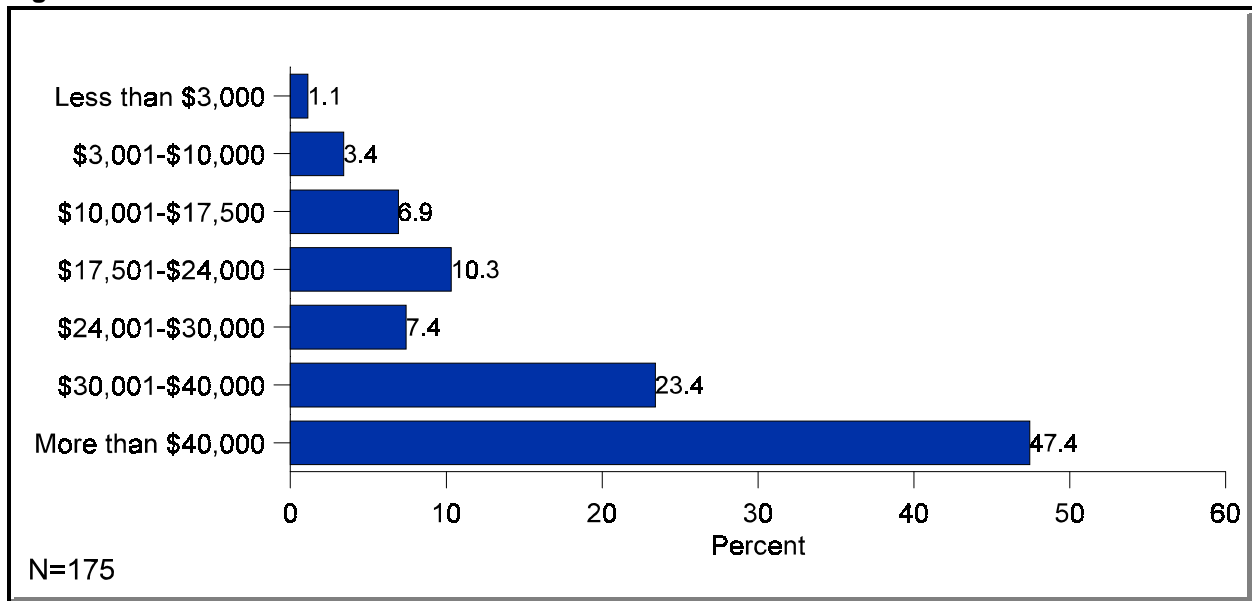
- Nearly 95 percent of respondents indicated they are white (Figure 21, Appendix Table 27).

**Figure 21. Race/ethnicity**



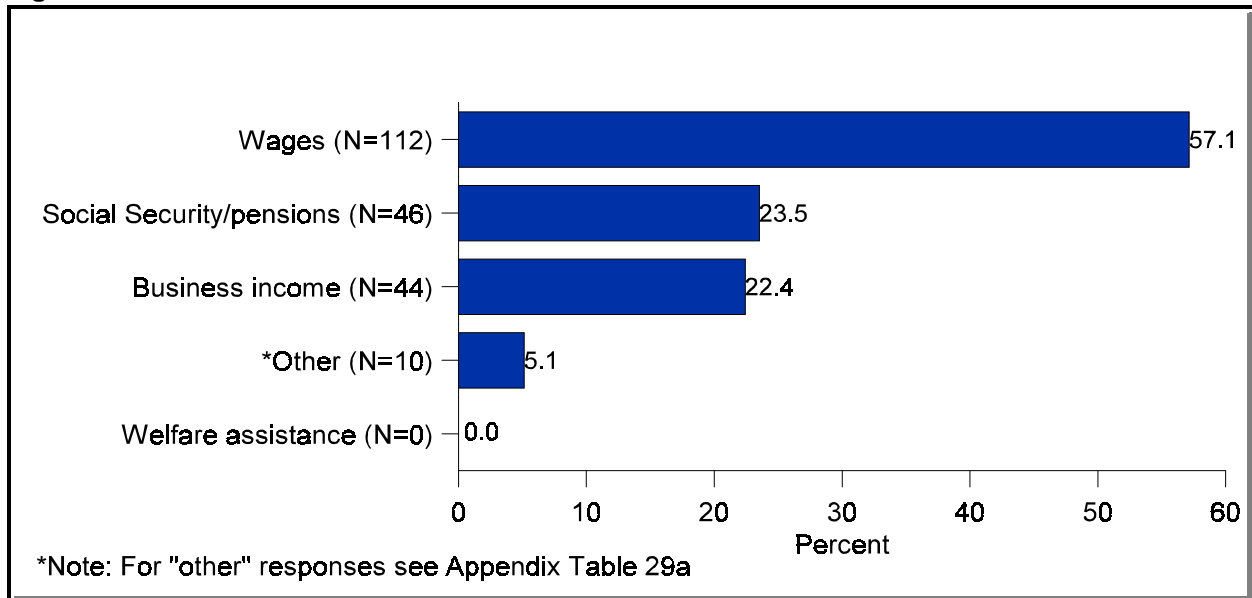
- Approximately 47 percent of respondents have an annual household income before taxes of more than \$40,000 dollars (Figure 22, Appendix Table 28).

**Figure 22. Annual household income before taxes**



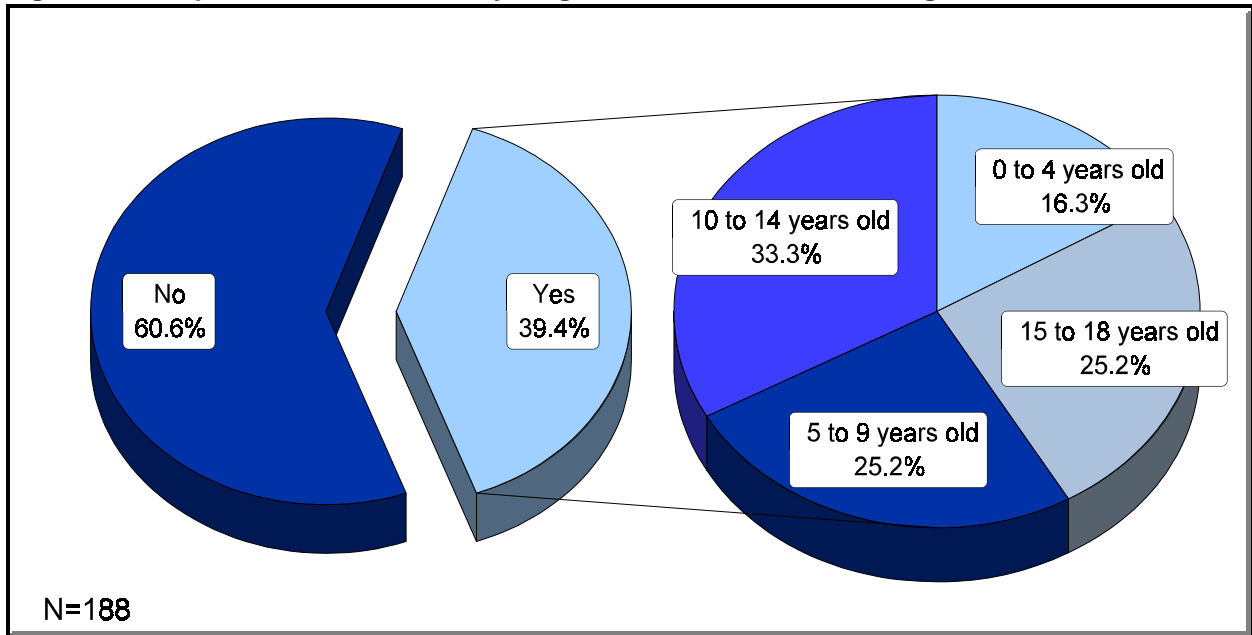
- Fifty-seven percent of respondents indicated their source of income was wages (Figure 23, Appendix Tables 29, 29a).

**Figure 23. Source of income**



- Nearly 61 percent of respondents indicated they do not have children younger than 18 years of age. Of the respondents who do have children younger than 18 years of age (39.4 percent), the categories are as follows: 16.3 percent of respondents had children between the ages of 0 and 4 years old, 25.2 percent of respondents had children between the ages of 5 and 9 years old, 33.3 percent of respondents had children between the ages of 10 and 14 years old, and 25.2 percent of respondents had children between the ages of 15 and 18 years of age (Figure 25, Appendix Table 30 and 31).

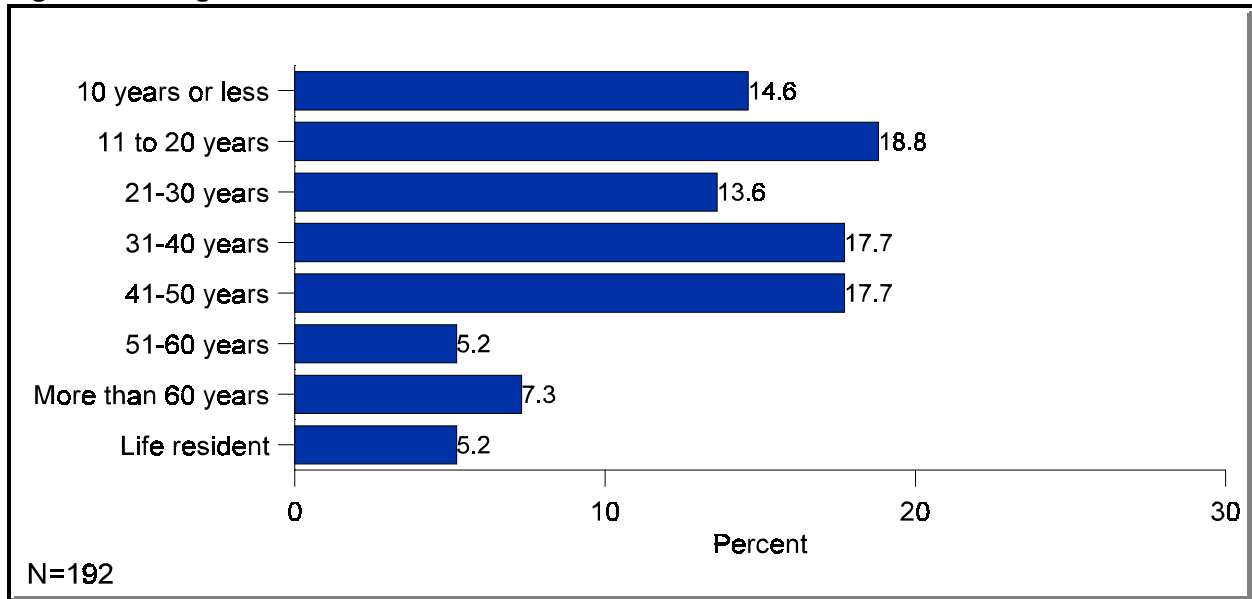
**Figure 24. Respondents with children younger than 18, with children's ages**





- Approximately 53 percent of respondents had lived in Devils Lake for more than 30 years (Figure 25, Appendix Table 32).

**Figure 25. Length of time lived in Devils Lake area**



## **Appendix Tables**

Appendix Table 1. A multi-purpose community center must meet the recreational needs of youth

	Respondents	
	Number	Percent*
Strongly disagree	7	3.9
Disagree	11	6.2
No opinion	12	6.7
Agree	62	34.8
Strongly agree	86	48.3
Total	178	99.9

Notes: \*Percent does not add to 100 due to rounding. The total does not include 18 missing cases.

Appendix Table 2. A multi-purpose community center must meet the recreational needs of adults

	Respondents	
	Number	Percent
Strongly disagree	8	4.6
Disagree	20	11.4
No opinion	18	10.3
Agree	78	44.6
Strongly agree	51	29.1
Total	175	100.0

Note: The total does not include 21 missing cases.

Appendix Table 3. A community center must be used for activities other than just recreational activities

	Respondents	
	Number	Percent*
Strongly disagree	9	5.1
Disagree	10	5.7
No opinion	36	20.5
Agree	60	34.1
Strongly agree	61	34.7
Total	176	100.1

Notes: \*Percent does not add to 100 due to rounding. The total does not include 20 missing cases.

Appendix Table 4. "Other" suggestions for activities the community center needs to provide

Response	Number of Responses
After school child care	2
Art	2
Televisions	2
Classes	2
Non-sports related activities	2
Activities for seniors	2
Socializing	2
Debates	1
Lessons (dance, etc)	1
Performers, yoga	1
Flea markets	1
Youth physical education	1
Climbing wall	1
Tennis	1
Karoke	1
Ability to serve meals	1
Cultural activities	1
Study area for kids	1
Sales	1
Indoor picnics	1
Indoor auctions	1
Social activities	1
Movies	1
Chamber events	1
Parks and recreation use	1
School programs	1
Circus	1
Support groups	1
Business functions	1
Open house activities	1
Facilities for catered meals/lunchroom	1

Appendix Table 4 continued on the next page

Appendix Table 4. Continued

<b>Response</b>	<b>Number of Responses</b>
Large group gatherings of all types	1
Bring in entertainment to the Lake Region	1
Community based programs	1
Boys and Girls Club of American type activities	1
A place home schoolers could use for some of their programs	1
I would like a small stage area for just dialogue or discussion	1
Church functions, crusades	1
Food stand (free popcorn), pop, and other food available	1
Space for a larger dance studio for Mikis School of Dance	1
Benefit meals, school projects, organizational groups in the community that have to other place to meet	1
The North Star building, with collaboration of Devils Lake Public Schools, and Park Board, would be an excellent start to having such a center	1
<b>Total</b>	<b>49</b>

Appendix Table 5. A multi-purpose community center would be an asset to the city of Devils Lake

	<b>Respondents</b>	
	<b>Number</b>	<b>Percent</b>
Strongly disagree	17	9.1
Disagree	12	6.4
No opinion	11	5.9
Agree	60	32.1
Strongly agree	87	46.5
<b>Total</b>	<b>187</b>	<b>100.0</b>

Note: The total does not include 9 missing cases.

Appendix Table 6. A community center should be used to promote Devils Lake

	Respondents	
	Number	Percent*
Strongly disagree	15	8.6
Disagree	20	11.4
No opinion	39	22.3
Agree	54	30.9
Strongly agree	47	26.9
Total	175	100.1

Notes: \*Percent does not add to 100 due to rounding. The total does not include 21 missing cases.

Appendix Table 7. "Other" suggestions for how the community center could promote Devils Lake

Response	Number of Responses
We need more wintertime jobs to keep people here and better paying jobs. I farm and have to go to Fargo in the winter to find work. I run into people in Fargo that came from Devils Lake area because they couldn't afford to live there.	1
Bring other activities to town	1
To show others that we can come together as a community. That we can teach the upcoming adults that there are better things to do besides drinking, taking any kind of drugs, and having sex.	1
Adult gatherings	1
Businesses could get together to give input as to what would be good for Devils Lake and what would bring people.	1
Use your money to promote business and industry	1
Advertise what activities will be taking place and invite general public, have an "open house," encourage comments/suggestions and try and use some that are given. Be open to all reasonable ideas that are offered.	1
(As long as it is large enough to accommodate crowds) it is something other than hunting and fishing, which is the major promo now in Devils Lake	1
A place large enough to hold activities for large and small groups	1
Other towns couldn't use it as a meeting place or various activities	1
As a place to hold state and national events	1
Use for promotional things, anything that comes to Devils Lake would bring shoppers, bring revenue to the Lake Region	1
Facilities designed for public use indicate a progressive community, particularly new facilities	1
Community center would give the people of Devils Lake other things to do besides sports, drinking, etc.	1

Appendix Table 7. Continued

<b>Response</b>	<b>Number of Responses</b>
Small communities may use facility	1
Science fairs, career day, etc., classes offered	1
It shows we care about our adults leisure time needs	1
It would give us one more option for "bringing things in"	1
Community involvement builds a stronger more stable community, word of mouth will take care of the rest	1
Fishing tournament banquets, area schools functions	1
Some events should include the entire Lake Region area	1
It would show visitors that we are interested in progress and peace	1
Used as a site for visitors to families. Can be family centered for activities	1
Maybe you haven't noticed but Devils Lake is fast becoming a ghost town	1
<b>Total</b>	<b>24</b>

Appendix Table 8. A community center should provide a place where youth can have access to educational services (tutors, etc.) after school hours

	<b>Respondents</b>	
	<b>Number</b>	<b>Percent</b>
Strongly disagree	15	8.3
Disagree	32	17.8
No opinion	33	18.3
Agree	64	35.6
Strongly agree	36	20.0
<b>Total</b>	<b>180</b>	<b>100.0</b>

Note: The total does not include 16 missing cases.

Appendix Table 9. There should be a balance at the community center between scheduled school activities and activities for youth and families

	Respondents	
	Number	Percent
Strongly disagree	10	5.5
Disagree	13	7.1
No opinion	22	12.0
Agree	91	49.7
Strongly agree	47	25.7
Total	183	100.0

Note: The total does not include 13 missing cases.

Appendix Table 10. My household would use a community center for activities

	Respondents	
	Number	Percent
Strongly disagree	20	11.6
Disagree	16	9.2
No opinion	40	23.1
Agree	72	41.6
Strongly agree	25	14.5
Total	173	100.0

Note: The total does not include 23 missing cases.

Appendix Table 10a. My household would use a community center for activities, by whether respondent had children under the age of 18

	Respondent does not have children younger than 18		Respondent does have children younger than 18	
	Number	Percent	Number	Percent
Strongly disagree	13	13.4	6	8.5
Disagree	11	11.3	4	5.6
No opinion	31	32.0	9	12.7
Agree	34	35.1	36	50.7
Strongly agree	8	8.2	16	22.5
Total	97	100.0	71	100.0

Note: Differences in responses were significant at the  $p < .05$  level, by whether the respondent had children younger than 18.



Appendix Table 11. "Other" suggestions for how respondent's household would use the community center

Response	Number of Responses
As a single parent, it would be nice to know someone is there to help with school work or know where my children are and what they are doing	1
It must be multi-purpose, not singly focused! School events (i.e.: sports) already have adequate facilities	1
Right now I can not tell you. I am by myself. Therefore I can not tell you what I can use the center for. I am sorry.	1
No kids living at home—but grandkids!	1
Promote businesses, educational events—cognitive vs. sports; music festival is an example	1
All of the items mentioned as services at the center are things I do as a parent. Parents need to take some responsibility to bring up their own kids instead of the community taking over the job of parenting	1
Buy North Star for youth activities	1
Meet with family and friends, possibly work for the center if help is needed, hold fund raisers/benefits	1
Computer learning, pool/hot tub	1
We don't live on go to school in Devils Lake	1
Elks tournaments	1
Place to gather for social events	1
For grandchildren, visitors	1
Use a school for "tutoring" and educational reasons	1
Meeting others, educational and cultural enrichment	1
At home kids close to school age	1
Classes	1
School projects, academic fairs, church league activities	1
Events	1
Educational functions	1
Family reunions	1
Total	21

Appendix Table 12. A community center should be centrally located within the city of Devils Lake

	Respondents	
	Number	Percent
Strongly disagree	11	5.9
Disagree	23	12.3
No opinion	63	33.7
Agree	52	27.8
Strongly agree	38	20.3
Total	187	100.0

Note: The total does not include 9 missing cases.

Appendix Table 13. A community center should be attached to another public facility

	Respondents	
	Number	Percent
Strongly disagree	19	10.8
Disagree	42	23.9
No opinion	81	46.0
Agree	27	15.3
Strongly agree	7	4.0
Total	176	100.0

Note: The total does not include 20 missing cases.

Appendix Table 14. "Other" suggestions for other facility attached to the community center

Response	Number of Responses
Central location	1
Public park	1
Swimming pool at NDSD	1
Police department	1
The memorial building	1
Racquetball club–curling club area	1
Should be near lodging facilities	1
Like North Star or Memorial buildings	1
Need one place where expansion would be feasible	1
Use the money to keep from forming assessment dist.	1
Try not to over build–but with room for expansion	1
What difference does it make where this building is located?	1
Somewhere out in the area of the Burdick area, school for the deaf, that area	1
Devils Lake is not that big. These kids and adults would have a hard time finding it.	1
I think it should be away from the uptown area where the "bigger" kids hang out, but close enough for easy access. Maybe in the mall.	1
Multi functional–closer to youth activities as they have limited transportation–adults have transportation	1
<b>Total</b>	<b>16</b>

Appendix Table 15. Management of a community center should be with one entity

	Respondents	
	Number	Percent*
Strongly disagree	16	8.9
Disagree	35	19.4
No opinion	49	27.2
Agree	54	30.0
Strongly agree	26	14.4
<b>Total</b>	<b>180</b>	<b>99.9</b>

Notes: \*Percent does not add to 100 due to rounding. The total does not include 16 missing cases.

Appendix Table 16. "Other" suggestions for entity that should manage the community center

Response	Number of Responses
Mayor's office	1
School board	1
County	1
None	1
Other	1
D.L.P.S.	1
Not sure	1
Agree	1
Chamber	1
Youth coalition	1
Strongly disagree	1
One manager reporting to a board	1
One entity needs to be the management. There is an old saying "too many cooks ruin the stew." Too many managers means that issues would not be addressed on a timely manner	1
A community/youth board with representation from park/school/local government/youth/parents	1
<b>Total</b>	<b>14</b>

Appendix Table 17. Management of a community center should be with multiple entities

	Respondents	
	Number	Percent*
Strongly disagree	22	13.8
Disagree	30	18.9
No opinion	47	29.6
Agree	44	27.7
Strongly agree	16	10.1
<b>Total</b>	<b>159</b>	<b>100.1</b>

Notes: \*Percent does not add to 100 due to rounding. The total does not include 37 missing cases.

Appendix Table 18. Entities that should manage the community center

	Respondents	
	Number	Percent
City commission	48	24.5
County commission	27	13.8
Park district	45	23.0
Public school	39	19.9
Other	19	9.7

Table 18a. "Other" responses regarding which entities should manage the community center

Response	Number of Responses
Members of the Devils Lake community	6
None	3
Private board/independent	3
Churches	3
Combination of entities	3
Other*	7
Total	25**

Notes: \*See Appendix Table 19 for other responses. \*\* Appendix Table 18 indicates that there were 19 "other" suggestions made by respondents. Six respondents did not check "other" and proceeded to write in a suggestion.

Appendix Table 19. "Other" entities that should manage the community center

Response	Number of Responses
Government agencies	1
(1-2) parents of school children and (1-2) elderly	1
Volunteers	1
People to help, to get paid, and create jobs	1
No on in this town is qualified	1
Keep the county out of this	1
?	1
Total	7

Appendix Table 20. If grant funds are not available to construct a community center, tax dollars should be used

	Respondents	
	Number	Percent*
Strongly disagree	52	28.6
Disagree	31	17.0
No opinion	15	8.2
Agree	69	37.9
Strongly agree	15	8.2
Total	182	99.9

Notes: \*Percent does not add to 100 due to rounding. The total does not include 14 missing cases.

Appendix Table 20a. If grant funds are not available to construct a community center, tax dollars should be used, by annual household income before taxes

	More than \$40,000		\$40,000 or less	
	Number	Percent*	Number	Percent
Strongly disagree	20	24.7	23	27.1
Disagree	9	11.1	19	22.4
No opinion	3	3.7	11	12.9
Agree	39	48.1	28	32.9
Strongly agree	10	12.3	4	4.7
Total	81	99.9	85	100.0

Notes: \*Percent does not equal 100 due to rounding. Differences in responses were significant at the  $p < .05$  level, by the respondent's income level.

Appendix Table 21. If utilization fees do not cover the operational costs of a community center, tax dollars should be used

	Respondents	
	Number	Percent*
Strongly disagree	45	25.3
Disagree	38	21.3
No opinion	17	9.6
Agree	64	36.0
Strongly agree	14	7.9
Total	178	100.1

Notes: \*Percent does not add to 100 due to rounding. The total does not include 18 missing cases.

Appendix Table 22. I would make a donation to the construction of a community center

	Respondents	
	Number	Percent
Strongly disagree	32	19.2
Disagree	31	18.6
No opinion	43	25.7
Agree	50	29.9
Strongly agree	11	6.6
Total	167	100.0

Note: The total does not include 29 missing cases.

Appendix Table 22a. I would make a donation to the construction of a community center, by annual household income before taxes

	More than \$40,000		\$40,000 or less	
	Number	Percent	Number	Percent
Strongly disagree	13	16.5	12	16.0
Disagree	13	16.5	15	20.0
No opinion	10	12.7	30	40.0
Agree	34	43.0	16	21.3
Strongly agree	9	11.4	2	2.7
Total	79	100.0	75	100.0

Notes: The total does not include 29 missing cases. Differences in responses were significant at the  $p < .05$  level, by the respondent's income level.

Appendix Table 22b. I would make a donation to the construction of a community center, by whether respondent has children younger than 18

	Respondent does not have children younger than 18		Respondent does have children younger than 18	
	Number	Percent	Number	Percent*
Strongly disagree	20	21.3	11	15.7
Disagree	24	25.5	6	8.6
No opinion	22	23.4	20	28.6
Agree	23	24.5	27	38.6
Strongly agree	5	5.3	6	8.6
Total	94	100.0	70	100.1

Notes: \* Percent does not add to 100 due to rounding. The total does not include 29 missing cases. Differences in responses were significant at the  $p < .05$  level, by whether the respondent had children younger than 18.

Appendix Table 23. I would make a donation to a foundation which would be used for the day-to-day operations of a community center

	Respondents	
	Number	Percent
Strongly disagree	32	19.2
Disagree	31	18.6
No opinion	43	25.7
Agree	50	29.9
Strongly agree	11	6.6
Total	167	100.0

Note: The total does not include 29 missing cases.

Appendix Table 23a. I would make a donation to a foundation which would be used for the day-to-day operations of a community center, by whether respondent has children younger than 18

	Respondent does not have children younger than 18		Respondent does have children younger than 18	
	Number	Percent*	Number	Percent
Strongly disagree	18	19.1	13	18.6
Disagree	25	26.6	7	10.0
No opinion	28	29.8	19	27.1
Agree	18	19.1	25	35.7
Strongly agree	5	5.3	6	8.6
Total	94	99.9	70	100.0

Notes: \*Percent does not add to 100 due to rounding. The total does not include 29 missing cases. Differences in responses were significant at the  $p < .05$  level, by whether the respondent had children younger than 18.

Appendix Table 24. Marital status

	Respondents	
	Number	Percent
Single	22	11.6
Married	139	73.2
Divorced	16	8.4
Widowed	13	6.8
Total	190	100.0

Note: The total does not include 8 missing cases.



Appendix Table 25. Gender

	Respondents	
	Number	Percent
Male	106	56.4
Female	82	43.6
Total	188	100.0

Note: The total does not include 8 missing cases.

Appendix Table 26. Type of housing

	Respondents	
	Number	Percent*
Rent apartment	17	9.0
Rent house/mobile home	10	5.3
Own house	161	85.6
Total	188	99.9

Notes: \*Percents do not add to 100 due to rounding. The total does not include 8 missing cases.

Appendix Table 27. Race/ethnicity

	Respondents	
	Number	Percent*
Hispanic	1	0.5
African American	0	0.0
American Indian	4	2.1
White	178	94.7
Asian	1	0.5
Other	4	2.1
<i>American</i>	1	NA
<i>German</i>	1	NA
<i>Does not apply</i>	1	NA
Total	188	99.9

Notes: \*Percents do not add to 100 due to rounding. The total does not include 8 missing cases. As noted in Appendix Table 27, four respondents checked the "other" category, however, one respondent chose not to write-in a response.

Appendix Table 28. Annual household income before taxes

	Respondents	
	Number	Percent*
Less than \$3,000	2	1.1
\$3,001 to \$10,000	6	3.4
\$10,001 to \$17,500	12	6.9
\$17,501 to \$24,000	18	10.3
\$24,001 to \$30,000	13	7.4
\$30,001 to \$40,000	41	23.4
More than \$40,000	83	47.4
<b>Total</b>	<b>175</b>	<b>99.9</b>

Notes: \*Percents do not add to 100 due to rounding. The total does not include 21 missing cases.

Appendix Table 29. Source of income

	Respondents	
	Number	Percent
Wages	112	57.1
Business income	44	22.4
Social Security/Pensions	46	23.5
Welfare assistance	0	0
Other	10	5.1

Appendix Table 29a. Other sources of income

	Number	Percent
Farming	3	23.1
Rent-farm	2	15.4
Spouses wages	2	15.4
Investments	2	15.4
Self employed	2	15.4
Retired	2	15.4
<b>Total</b>	<b>13</b>	<b>100.0</b>

Note: Three respondents who wrote a response did not check "other."

Appendix Table 30. Children younger than 18 years of age

	Respondents	
	Number	Percent
Yes	114	60.6
No	74	39.4
Total	188	100.0

Note: The total does not include 8 missing cases.

Appendix Table 31. Ages of children younger than 18

	Respondents	
	Number	Percent
0 to 4 years	22	16.3
5 to 9 years	34	25.2
10 to 14 years	45	33.3
15 to 18 years	34	25.2
Total*	135	100.0

\*Only 114 respondents indicated that they had children under the age of 18, however, 135 respondents listed the ages of their children (under the age of 18).

Appendix Table 32. Number of years lived in Devils Lake area

	Respondents	
	Number	Percent
0 to 10 years	28	14.6
11 to 20 years	36	18.8
21 to 30 years	26	13.5
31 to 40 years	34	17.7
41 to 50 years	34	17.7
51 to 60 years	10	5.2
More than 60 years	14	7.3
Life resident	10	5.2
Total	192	100.0

Note: The total does not include 4 missing cases.

## **Additional Comments**

Statements regarding the **Purpose** of the community center

Statement	Response
A multi-purpose community center must meet the recreational needs of the youth	No
A multi-purpose community center would be an asset to the city of Devils Lake	No
A community center should provide a place where youth can have access to educational services (tutors, etc.) after school hours	Could, not should
My household would use a community center for activities	Depends on kinds of activities

Statements regarding **Location** of the community center

Statement	Response
A community center should be centrally located within the city of Devils Lake	Need ample parking space

Statements regarding **Management** of the community center

Statement	Response
Management of a community center should be with multiple entities	No need
	Don't know
	Don't know enough about it
	Definitely not the County Commission
	Management should be with an elected board so there would be no show of favoritism towards one group or groups
	The three listed [City Commission, Park District, and Public school] should each appoint two members to the board and then that board would manage it independently of the three listed

Statements regarding **Funding** of the community center

Statement	Response
If grant funds are not available to construct a community center, tax dollars should be used	I am opposed to taxation to support any community center
	No, we are already (still) paying the piper for the library
	No need
I would make a donation to a foundation which would be used for the day-to-day operations of a community center	We do not need to increase the taxes anymore to the people in Devils Lake
	Those who use the services should pay for them

Statements regarding **Demographics**

Statement	Response
What is your marital status	N/A
What is your gender	N/A
	We both talked about answers
	We both agree [they checked both male and female]
What type of housing do you live in	N/A
What is your race/ethnicity	N/A
What is your annual household income before taxes?	N/A
	N/A
	Bad question
	None of your business
What is your source of income	N/A
	Bad question
Do you have children younger than 18	N/A
How many years have you lived in the Devils Lake area?	N/A
	And I am ready to move
	And all you do is tax us to death

## **Survey Instrument**

## DEVILS LAKE COMMUNITY CENTER SURVEY

Dear Respondent,

We are conducting a survey to gather information regarding the possible development of a multi-purpose community center in Devils Lake, North Dakota. This survey will give the community an understanding as to your interests in, and utilization of a facility such as this, and how the facility can best meet the needs of you and your family. Please take a few moments and fill out this short questionnaire. Your responses are important and will be recorded without any identifying information. If you have any questions regarding the survey, please call Chuck Sanderson at 662-1573. Thank you so much.

- Select only **one** answer unless the instructions specify otherwise.
- Fill out the survey using either a #2 pencil or a pen (black or blue ink). **Fill in ovals completely.**
- Place the survey in the enclosed postage-paid envelope and return it as soon as possible.

Please respond to the following statements regarding the **PURPOSE** of the proposed community center. Fill in the ovals that best describe your opinions.

1. A multi-purpose community center must meet the recreational needs of youth.
2. A multi-purpose community center must meet the recreational needs of adults.
3. A community center must be used for activities other than just recreational activities.

Strongly agree					
Agree					
No Opinion					
Disagree					
Strongly disagree					

3a. If you "agree" or "strongly agree", please tell us the activities the community center needs to provide.

---



---



---

4. A multi-purpose community center would be an asset to the city of Devils Lake.
5. A community center should be used to promote Devils Lake.

Strongly agree					
Agree					
No opinion					
Disagree					
Strongly disagree					

5a. If you "agree" or "strongly agree", please tell us how you think the community center could promote Devils Lake.

---



---



---

6. A community center should provide a place where youth can have access to educational services (tutors, etc.) after school hours.
7. There should be a balance at the community center between scheduled school activities and activities for youth and families.
8. My household would use a community center for activities.

Strongly agree					
Agree					
No opinion					
Disagree					
Strongly disagree					

8a. If you "agree" or "strongly agree" please tell us how your household would use the community center.

---



---



---



---



Fill in the ovals that best describe your opinions regarding the **LOCATION** of a community center.

9. A community center should be centrally located within the city of Devils Lake.

10. A community center should be attached to another public facility.  
 10a. If you "agree" or "strongly agree", please tell us which facility the community center should be attached to. \_\_\_\_\_

Strongly agree  
 Agree  
 No opinion  
 Disagree  
 Strongly disagree

Fill in the ovals that best describe your opinions regarding the **MANAGEMENT** of a community center.

11. Management of a community center should be with one entity.  
 11a. If you "agree" or "strongly agree" with one entity, which entity? \_\_\_\_\_

12. Management of a community center should be with multiple entities.  
 12a. If you "agree" or "strongly agree" with multiple entities, which entities should manage the community center (check all that apply)?

City commission  
 County commission  
 Park district  
 Public school  
 Other \_\_\_\_\_

Strongly agree  
 Agree  
 No opinion  
 Disagree  
 Strongly disagree

Fill in the ovals that best describe your opinions regarding the **FUNDING** of a community center.

13. If grant funds are not available to construct a community center, tax dollars should be used.

14. If utilization fees do not cover the operational costs of a community center, tax dollars should be used.

15. I would make a donation to the construction of a community center.

16. I would make a donation to a foundation which would be used for the day-to-day operations of a community center.

Strongly agree  
 Agree  
 No opinion  
 Disagree  
 Strongly disagree

17. What is your marital status?  
 Single  
 Married  
 Divorced  
 Widowed

18. What is your gender?  
 Male  
 Female

19. What type of housing do you live in?  
 a. Rent apartment  
 b. Rent house/mobile home  
 c. Own house

20. What is your race/ethnicity?  
 Hispanic  
 African American  
 American Indian  
 White  
 Asian  
 Other \_\_\_\_\_

21. What is your annual household income before taxes?  
 a. Less than \$3,000  
 b. \$3,001-\$10,000  
 c. \$10,001-\$17,500  
 d. \$17,501-\$24,000  
 e. \$24,001-\$30,000  
 f. \$30,001-\$40,000  
 g. More than \$40,000

22. What is your source of income?  
 a. Wages  
 b. Business income  
 c. Social Security/Pensions  
 d. Welfare assistance  
 e. Other \_\_\_\_\_

23. Do you have children younger than 18?  
 a. No  
 b. Yes, What are the children's ages? \_\_\_\_\_

24. How many years have you lived in the Devils Lake area? \_\_\_\_\_