

## **NDSU Advance FORWARD: Advancing Faculty to Move NDSU Forward**

### **Climate & Gender Research Program Information Session**

**May 13, 2010**



**FORWARD**

Focus On Resources for Women's Advancement, Recruitment/ Retention and Development

## **NSF ADVANCE Institutional Transformation Program**

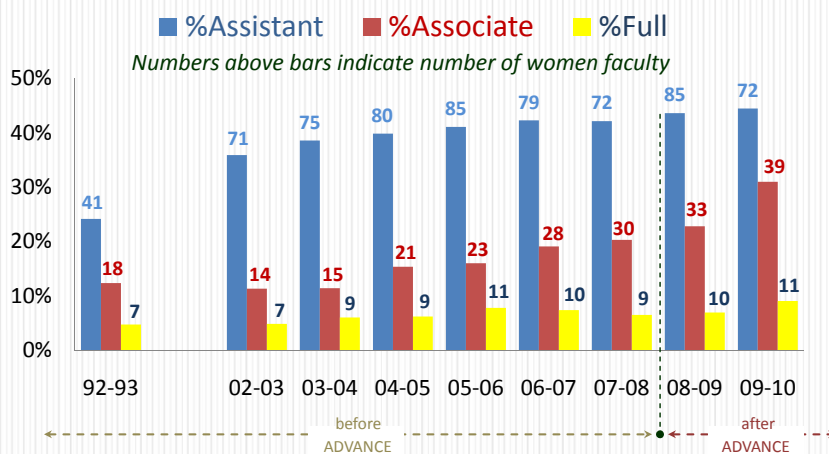
- ❖ Funding for comprehensive and sustainable institutional transformation to increase the representation and advancement of women in academic science, technology, engineering and mathematics (STEM) careers, thereby contributing to the development of a more diverse science and engineering workforce.



**FORWARD**

Focus On Resources for Women's Advancement, Recruitment/ Retention and Development

## Percentage of NDSU Women at Rank



FORWARD

Focus On Resources for Women's Advancement, Recruitment/ Retention and Development

3

## Advance FORWARD Goals

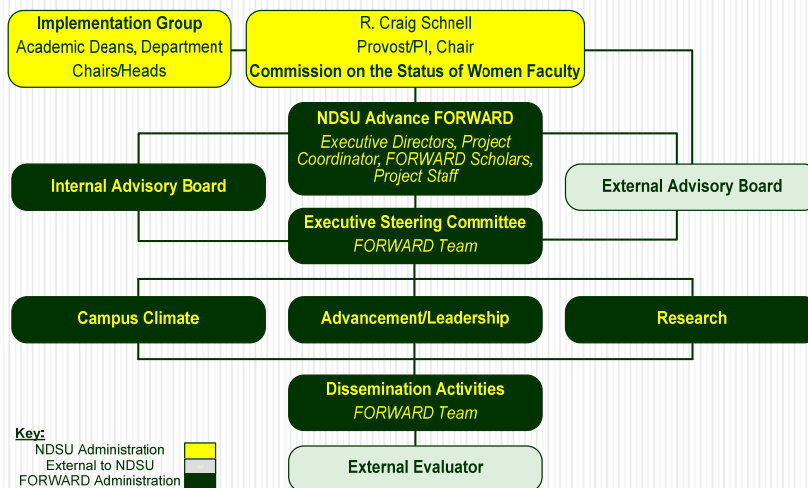
- ❖ Improve the climate across the campus
- ❖ Enhance recruitment of women faculty
- ❖ Increase retention of women faculty
- ❖ Promote/advance women associate professors and hire women at advanced rank to build a critical mass of senior women
- ❖ Open faculty leadership opportunities for women



FORWARD

Focus On Resources for Women's Advancement, Recruitment/ Retention and Development

## Major Project Components



**FORWARD**

Focus On Resources for Women's Advancement, Recruitment/ Retention and Development

5

## Funding Opportunities

- ❖ Course Release Grants – STEM
- ❖ Leap Research Grants – STEM
- ❖ Leadership Development Grants – All
- ❖ Travel Grants – All
- ❖ **Climate and Gender Research Grants – All**
- ❖ Mentoring Programs – All



**FORWARD**

Focus On Resources for Women's Advancement, Recruitment/ Retention and Development

## Climate and Gender Research Grants

- ❖ To engage the university in research on gender, develop interdisciplinary research teams
- ❖ Demonstrate the value of research on gender and the academy.
- ❖ Typical projects funded by this program will advance understanding of gender in the academia, especially in STEM, and is expected to be separate from FORWARD related programs.



FORWARD

Focus On Resources for Women's Advancement, Recruitment/ Retention and Development

## Eligibility

- ❖ Open to tenure-track or tenured faculty in STEM **AND** NON STEM disciplines.
- Open to all interdisciplinary research teams composed of tenure-track or tenured faculty.



FORWARD

Focus On Resources for Women's Advancement, Recruitment/ Retention and Development

## Timeline

- ❖ **Proposal deadline:** July 15, 2010
- ❖ **Award announcement:** August 2010
- ❖ **Award period:** One year, all funds must be used by August 31, 2011.



FORWARD

Focus On Resources for Women's Advancement, Recruitment/ Retention and Development

## Budget

- ❖ **Budget cap:** \$10,000
- ❖ **Allowable budget items:** Salary; budget fringe at NDSU level, equipment, supplies, travel, and publication costs. **Direct costs only (no overhead).**



FORWARD

Focus On Resources for Women's Advancement, Recruitment/ Retention and Development

## Proposal Format

- ❖ Advance FORWARD Climate and Gender Grant cover sheet
- ❖ Project Description – Not to exceed five single-spaced pages including tables and figures. Write to the level of a wide audience of potential reviewers.
- ❖ References cited
- ❖ Vita – two pages



FORWARD

Focus On Resources for Women's Advancement, Recruitment/ Retention and Development

## Proposal Format

- ❖ Budget with justification
  - One page
  - Itemize, describe, and justify each budget item.
  - Use the NDSU budget form
- ❖ List funding agency and program to which you will submit a proposal. Include target date for submission(s) and estimated budget amount.




FORWARD

Focus On Resources for Women's Advancement, Recruitment/ Retention and Development

**NDSU**  
Standard Proposal Budget

<u>Salaries &amp; Wages</u>		
Full time faculty	_____	
Fringe Benefits @30%	_____	
Full time staff, research assoc., techs, post docs	_____	
Fringe Benefits @30%	_____	
Graduate & undergraduate students	_____	
Fringe Benefits @2%	_____	
Part time staff	_____	
Fringe Benefits @10%	_____	
<b>Total Salaries &amp; Fringe Benefits</b>		\$0
<u>Operating Expense</u>		
Travel - Domestic	_____	
Travel - Foreign	_____	
Supplies	_____	
Postage	_____	
Printing	_____	
Repairs	_____	
Subcontracts	_____	
Rents & Leases	_____	
Major Equipment >\$5k	_____	
Operating Fees & Services	_____	
Professional Fees & Services	_____	
Miscellaneous Expense	_____	
<b>Total Operating Expense</b>		\$0
Total Direct Costs		\$0
Facilities & Administrative	_____	\$0
<b>Total Cost</b>		\$0

 **FORWARD** Focus On Resources for Women's Advancement, Recruitment/ Retention and Development

## Review Process

- ❖ Proposals will be reviewed by external reviewers from other universities.
- ❖ The final decisions for awards will be made by an internal review committee.
- ❖ Reviewer evaluation forms are posted on the FORWARD web site.

## Review Criteria

### ❖ Primary Criteria

- Intellectual merit
- Innovation and methodological rigor
- Qualifications of the research team
- Interdisciplinary nature of the research team
- Potential for external funding and publications
- Promise in leading to a positive climate

### ❖ Secondary Criteria

- Soundness of the budget
- Quality of the proposal



FORWARD

Focus On Resources for Women's Advancement, Recruitment/ Retention and Development

## Obligations

- ❖ Submit manuscript to peer reviewed journal.
- ❖ Submit a research proposal to a funding agency within 12 months.
- ❖ Present findings to campus.
- ❖ Participate in program assessment.
- ❖ Acknowledge support from the NDSU ADVANCE FORWARD program sponsored by the National Science Foundation.



FORWARD

Focus On Resources for Women's Advancement, Recruitment/ Retention and Development



## Current Awards...

- ❖ **Assessing Toward Equity in STEM** – Nathan Wood, School of Education and Erika Offerdahl, Chemistry & Molecular Biology.
- ❖ **Motivation and Adaptability Factors for Females in the "Leaky Engineering Pipeline"**– Kathy B. Enger, School of Education and Achintya Bezbaruah, Civil Engineering.
- ❖ **Developing Gender Equity in Mathematics Classrooms: What Does it Take to Succeed?** – Angela Hodge, Mathematics & Teacher Education and Christina Weber, Sociology.



FORWARD

Focus On Resources for Women's Advancement, Recruitment/ Retention and Development

## Proposal Submission

- ❖ Email application materials—**saved as a single pdf file** – to [ndsu.forward@ndsu.edu](mailto:ndsu.forward@ndsu.edu).
- ❖ A proposal will not be considered if:
  - The applicant is not eligible.
  - The research area is not clearly in climate and/or gender.
  - The applicant submits more than one application per round.
  - Instructions are not followed correctly.



FORWARD

Focus On Resources for Women's Advancement, Recruitment/ Retention and Development

## Some Suggestions...

- ❖ *The budget justification is not clear to this reviewer.*
- ❖ *The weaknesses in the proposal are the lack of detail around the research to be done and the interdisciplinary nature of the participants.*
- ❖ *There was no hypothesis regarding the effect of the proposed program.*
- ❖ *This proposal has numerous spelling and grammatical errors which would discourage most reviewers from recommending it.*



FORWARD

Focus On Resources for Women's Advancement, Recruitment/ Retention and Development

## Some Suggestions...

- ❖ Pose significant questions that can be investigated empirically
- ❖ Link relevant research to theory
- ❖ Use methods that permit direct investigation of the question posed
- ❖ Provide a coherent and explicit chain of reasoning
- ❖ Replicate and generalize across studies
- ❖ Disclose research to encourage professional scrutiny and critique

**National Research Council report**



FORWARD

Focus On Resources for Women's Advancement, Recruitment/ Retention and Development

## Some Suggestions...

- ❖ External funding sources to consider:
  - National Science Foundation
    - Education and Human Resources
      - Human Resource Development
        - **Research on Gender in Science and Engineering**
          - » Search for awards (*for more information see August 24, 2009 information session slides*)



FORWARD

Focus On Resources for Women's Advancement, Recruitment/ Retention and Development

## Questions?

**Canan Bilen-Green**—Industrial & Manufacturing Engineering  
**Elizabeth Birmingham**—English  
**Ann Burnett**—Women and Gender Studies  
**Kalpana Katti**—Civil Engineering  
**Christine McGeorge**—Child Development & Family Science  
**Julie Nash**—NDSU Advance FORWARD, Coordinator  
**Donald Schwert**—Center for Science & Math Education



FORWARD

Focus On Resources for Women's Advancement, Recruitment/ Retention and Development