

For current faculty (Survey)

Survey Results

1. Sex:

A) Ballot

Method: Multiple Selection

Options: Allow Bypass

Maximum Selections: [1]

Descriptions: Please choose one

Number of Choices: 2

B) Results Spread

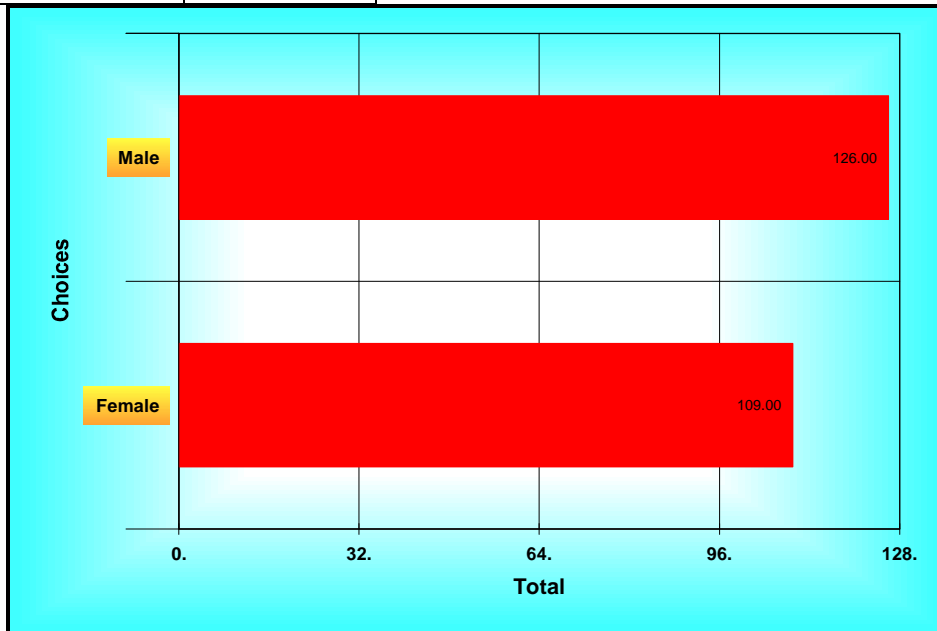
Statistics

Total 2.00

N 237

Table Sorted By Total

Choices	Total
Male	126
Female	109



Results Chart (1. Sex:)

2. Rank at NDSU:

A) Ballot

Method: Multiple Selection
 Options: Allow Bypass
 Enter Text for Last Choice
 Maximum Selections: [1]
 Descriptions: Please choose one
 Number of Choices: 4

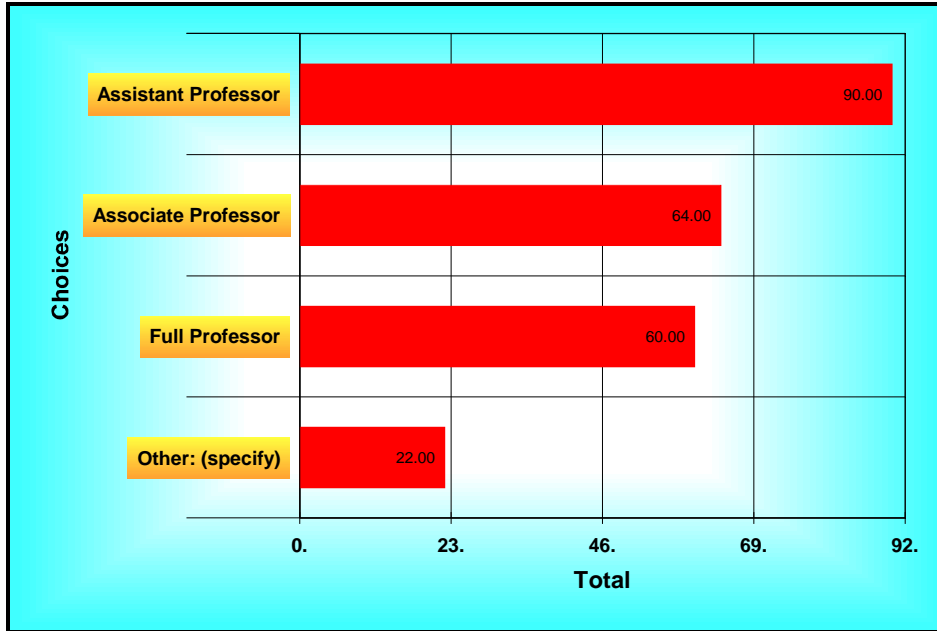
B) Results Spread

Statistics
Total 4.00
N 237
Table Sorted By Total

C) Text Responses

1. lecturer
2. lecturer
3. Lecturer
4. senior lecturer
5. Lecturer
6. You need to ask not only concerns within Departments but also concerns about NDSU higher administration, their performance, and the need of being evaluated for what they do and how do they perform the same way a faculty is evaluated
7. Assistant professor but part-time, non-tenure track
8. Emeritus
9. Administrator-many of the questions below do not apply to me
10. Sr. Lecturer
11. lecturer
12. Research Assistant Professor
13. Senior Lecturer
14. Senior Lecturer
15. Senior Lecturer
16. Lecturer
17. lecturer
18. research professor
19. Sr. Lecturer
20. Extension Specialist - not tenure track
21. Lecturer - special hire
22. non-tenure track

Choices	Total
Assistant Professor	90
Associate Professor	64
Full Professor	60
Other: (specify)	22



Results Chart (2. Rank at NDSU:)

3. Number of years at that rank:

A) Ballot

Method: Multiple Selection
 Options: Allow Bypass
 Maximum Selections: [1]
 Descriptions: Please choose one
 Number of Choices: 7

B) Results Spread

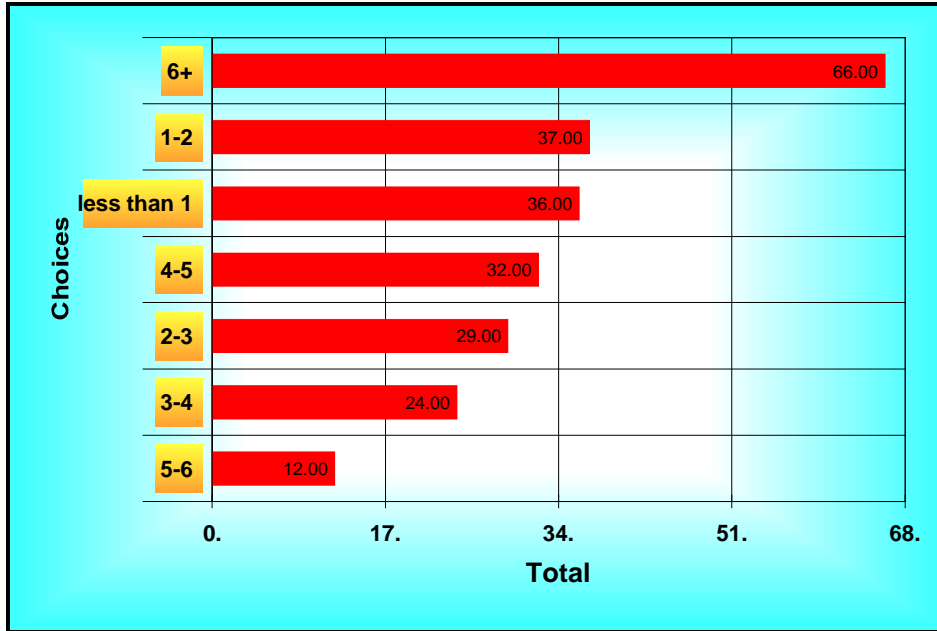
Statistics

Total 7.00

N 237

Table Sorted By Total

Choices	Total
6+	66
1-2	37
less than 1	36
4-5	32
2-3	29
3-4	24
5-6	12



Results Chart (3. Number of years at that rank:)

4. In what area is your appointment?

A) Ballot

Method: Multiple Selection
 Options: Allow Bypass
 Maximum Selections: [1]
 Descriptions: Please choose one
 Number of Choices: 2

B) Results Spread

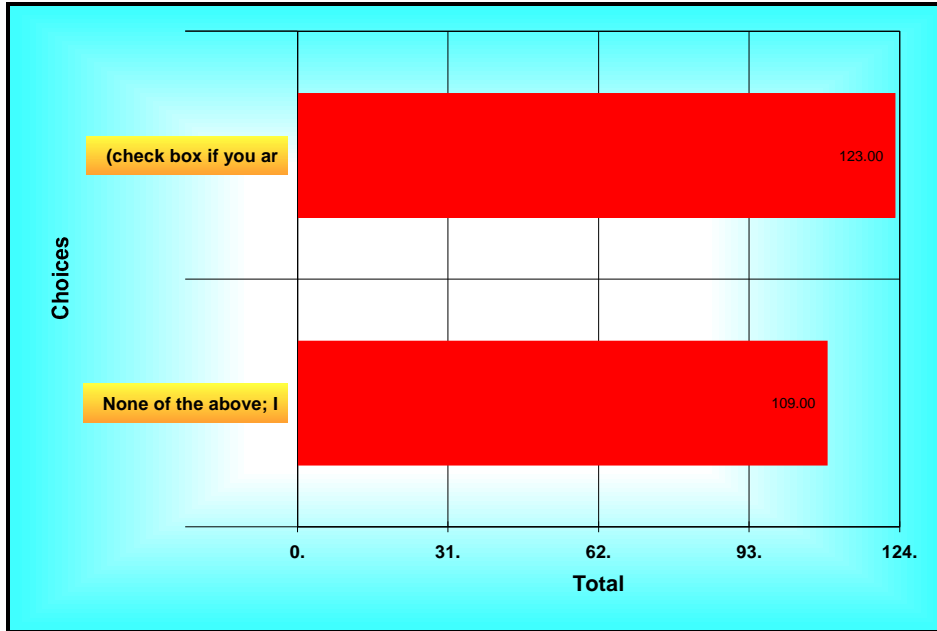
Statistics

Total 2.00

N 237

Table Sorted By Total

Choices	Total
(check box if you are in a Science, Math, Engineer	123
None of the above; I was not in Science, Math, Eng	109



Results Chart (4. In what area is your appointment?)

5. Current relationship status:

A) Ballot

Method: Multiple Selection
 Options: Allow Bypass
 Enter Text for Last Choice
 Maximum Selections: [1]
 Descriptions: Please choose one
 Number of Choices: 8

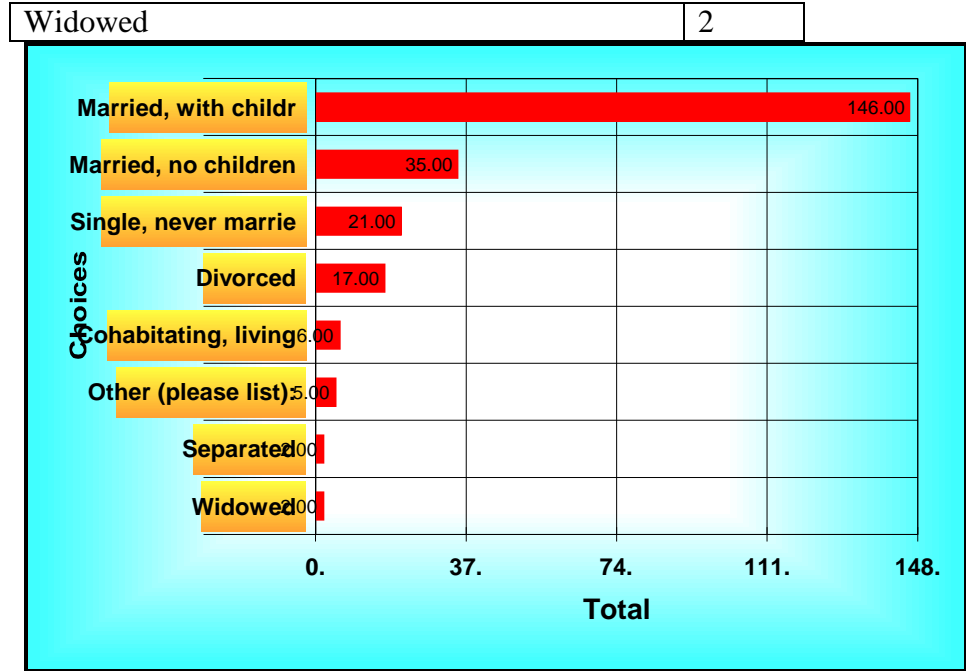
B) Results Spread

Statistics
 Total 8.00
 N 237
 Table Sorted By Total

C) Text Responses

1. Single, with children :)
2. Domestic Partner
3. divorced with one child
4. Divorced with children
5. No longer cohabitating, or living with my our partner in an intimate relationship

Choices	Total
Married, with children	146
Married, no children	35
Single, never married	21
Divorced	17
Cohabitating, living with your partner in an intim	6
Other (please list):	5
Separated	2



Results Chart (5. Current relationship status:)

6. The tenure process is clear.

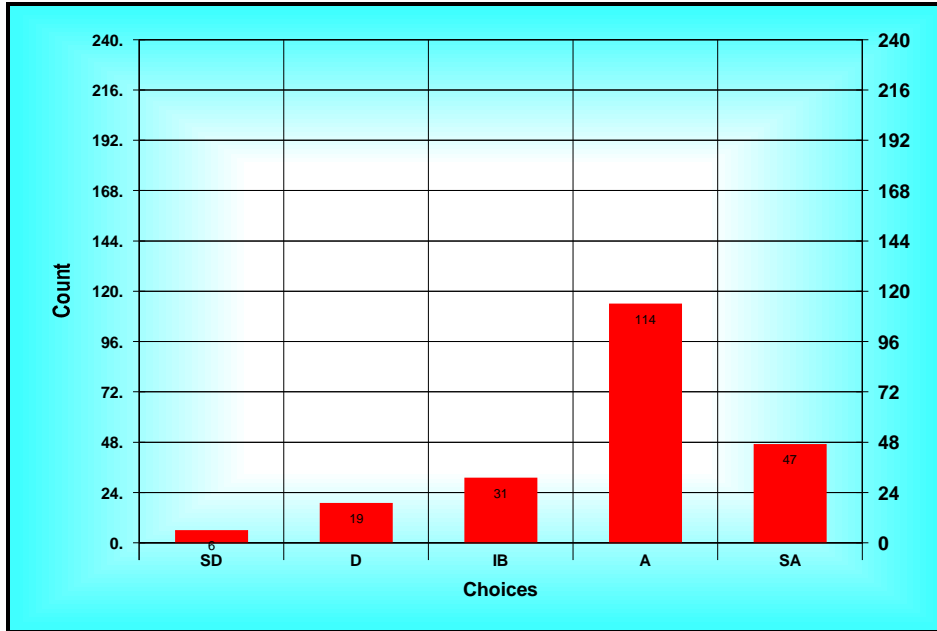
A) Ballot

Method: Custom Method
 Options: Allow Bypass
 Descriptions: SD = Strongly Disagree D = Disagree IB = In Between A = Agree SA = Strongly Agree

B) Results Spread

<i>Choices</i>	<i>Count</i>
<i>SD(1)</i>	<i>6</i>
<i>D(2)</i>	<i>19</i>
<i>IB(3)</i>	<i>31</i>
<i>A(4)</i>	<i>114</i>
<i>SA(5)</i>	<i>47</i>

Statistics
 Total 828
 Mean A(3.82)
 Mode A
 High SA
 Low SD
 STD 0.96
 N 237
 n 217



Results Chart (6. The tenure process is clear.)

7. I am satisfied with the number of courses I taught.

A) Ballot

Method: Custom Method

Options: Allow Bypass

Descriptions: SD = Strongly Disagree D = Disagree IB = In Between A = Agree SA = Strongly Agree

B) Results Spread

Choices	Count
SD(1)	3
D(2)	17
IB(3)	30
A(4)	99
SA(5)	69

Statistics

Total 868

Mean A(3.98)

Mode A

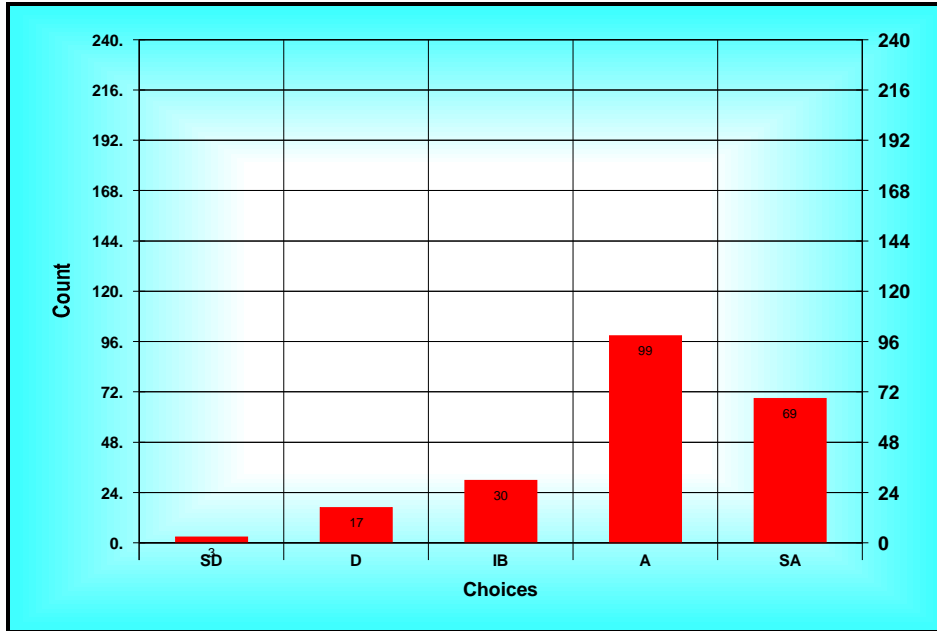
High SA

Low SD

STD 0.95

N 237

n 218



Results Chart (7. I am satisfied with the number of courses I...)

8. Communication within my department is not effective.

A) Ballot

Method: Custom Method

Options: Allow Bypass

Descriptions: SD = Strongly Disagree D = Disagree IB = In Between A = Agree SA = Strongly Agree

B) Results Spread

Choices	Count
SD(1)	65
D(2)	75
IB(3)	36
A(4)	28
SA(5)	20

Statistics

Total 535

Mean D(2.39)

Mode D

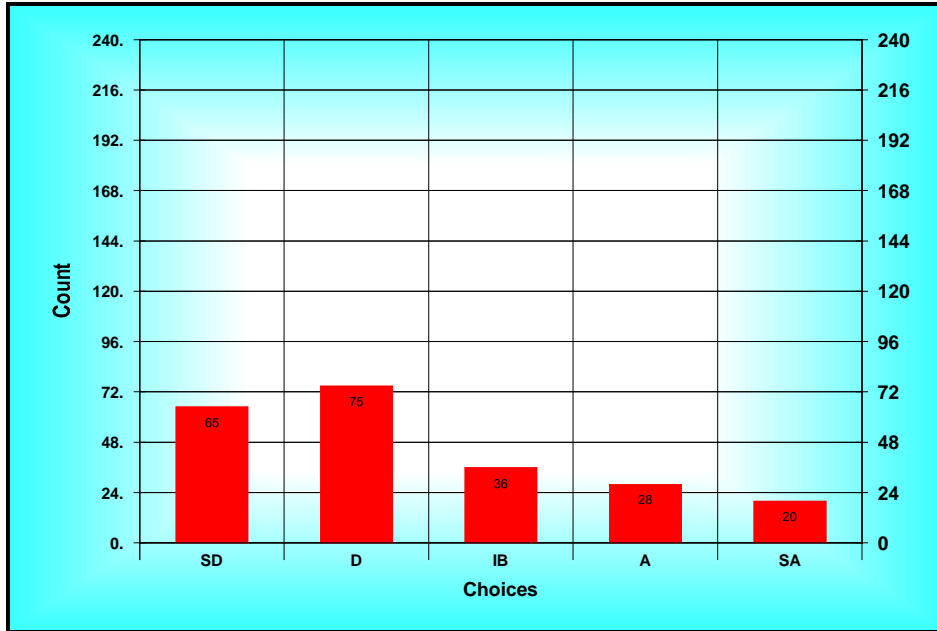
High SA

Low SD

STD 1.27

N 237

n 224



Results Chart (8. Communication within my department is not...)

9. The expectations for performance as a department colleague are clear.

A) Ballot

Method: Custom Method

Options: Allow Bypass

Descriptions: SD = Strongly Disagree D = Disagree IB = In Between A = Agree SA = Strongly Agree

B) Results Spread

Choices	Count
SD(1)	7
D(2)	33
IB(3)	45
A(4)	98
SA(5)	47

Statistics

Total 835

Mean A(3.63)

Mode A

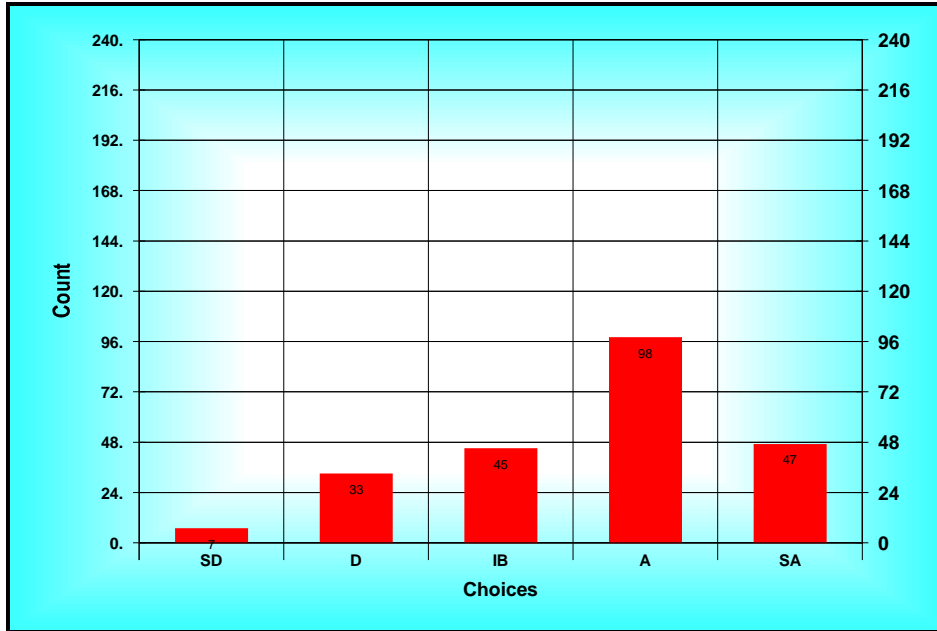
High SA

Low SD

STD 1.06

N 237

n 230



Results Chart (9. The expectations for performance as a department...)

10. The informal mentoring is effective.

A) Ballot

Method: Custom Method

Options: Allow Bypass

Descriptions: SD = Strongly Disagree D = Disagree IB = In Between A = Agree SA = Strongly Agree

B) Results Spread

<i>Choices</i>	<i>Count</i>
<i>SD(1)</i>	<i>24</i>
<i>D(2)</i>	<i>28</i>
<i>IB(3)</i>	<i>54</i>
<i>A(4)</i>	<i>78</i>
<i>SA(5)</i>	<i>30</i>

Statistics

Total 704

Mean IB(3.29)

Mode A

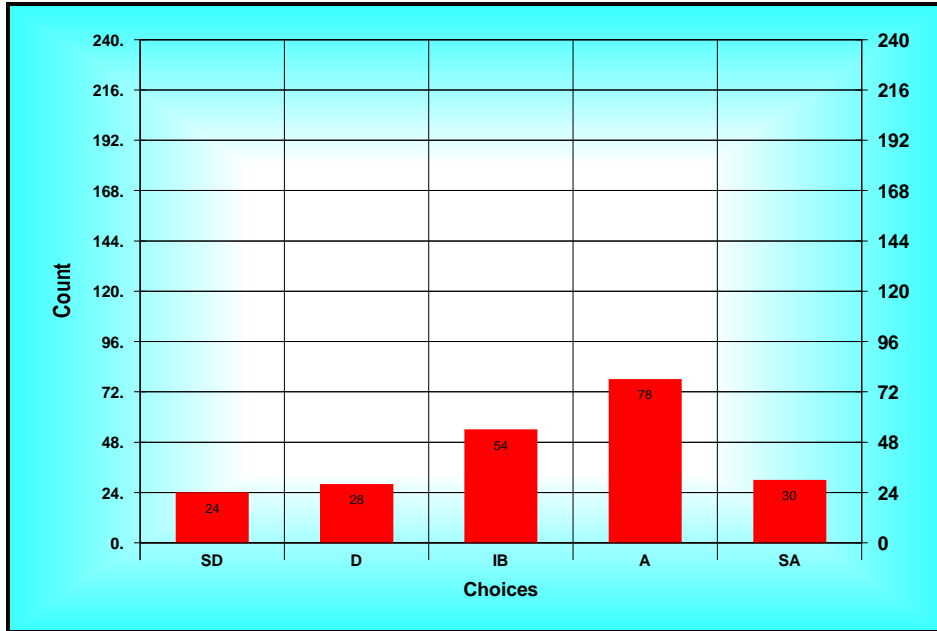
High SA

Low SD

STD 1.19

N 237

n 214



Results Chart (10. The informal mentoring is effective.)

11. The criteria for tenure are clear.

A) Ballot

Method: Custom Method

Options: Allow Bypass

Descriptions: SD = Strongly Disagree D = Disagree IB = In Between A = Agree SA = Strongly Agree

B) Results Spread

<i>Choices</i>	<i>Count</i>
<i>SD(1)</i>	<i>8</i>
<i>D(2)</i>	<i>23</i>
<i>IB(3)</i>	<i>39</i>
<i>A(4)</i>	<i>106</i>
<i>SA(5)</i>	<i>36</i>

Statistics

Total 775

Mean A(3.66)

Mode A

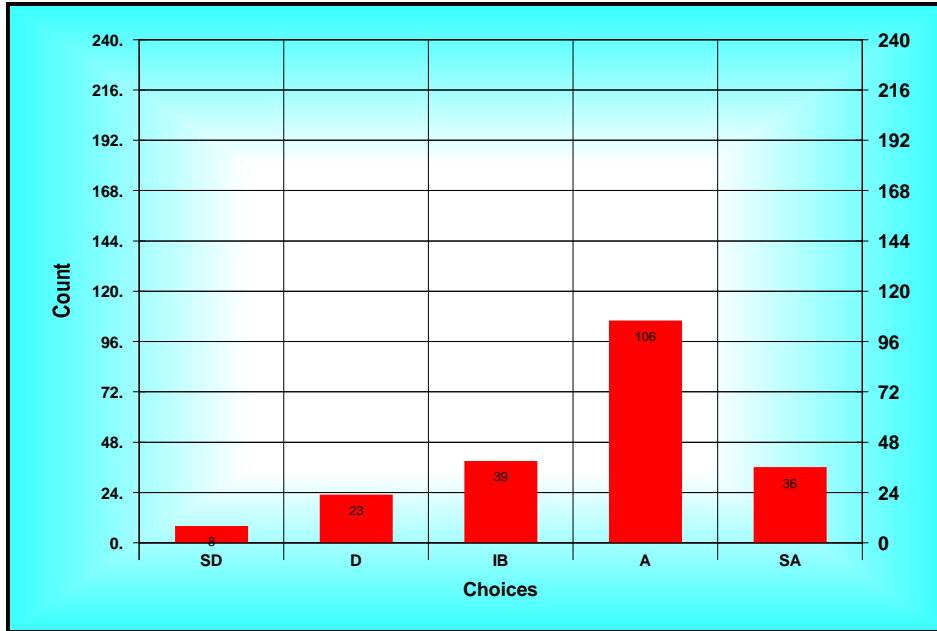
High SA

Low SD

STD 1.01

N 237

n 212



Results Chart (11. The criteria for tenure are clear.)

12. There are faculty similar to me in my department.

A) Ballot

Method: Custom Method

Options: Allow Bypass

Descriptions: SD = Strongly Disagree D = Disagree IB = In Between A = Agree SA = Strongly Agree

B) Results Spread

Choices	Count
SD(1)	17
D(2)	29
IB(3)	40
A(4)	80
SA(5)	51

Statistics

Total 770

Mean A(3.55)

Mode A

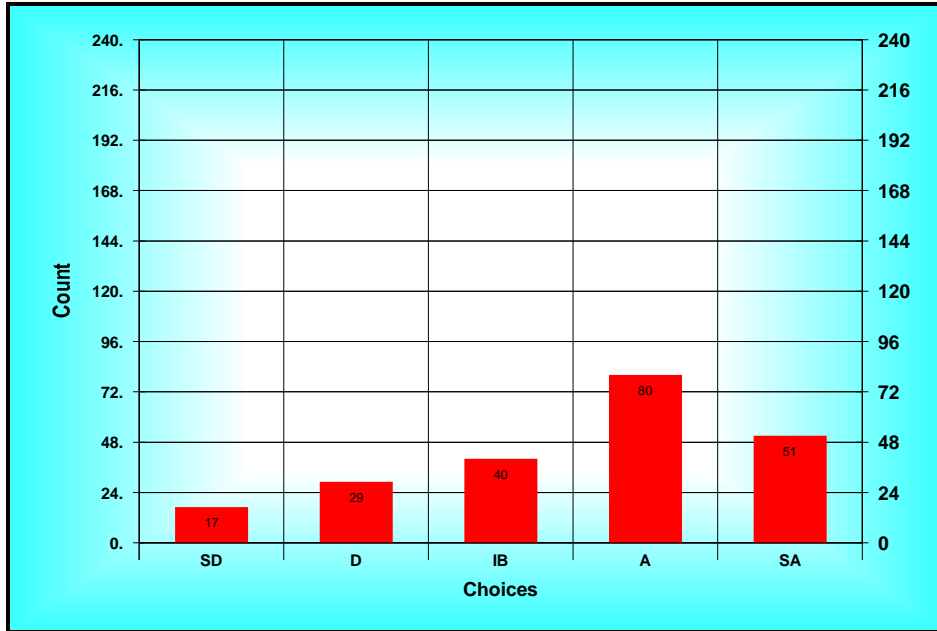
High SA

Low SD

STD 1.21

N 237

n 217



Results Chart (12. There are faculty similar to me in my department.)

13. I am dissatisfied with the fairness of my immediate supervisor’s evaluation of my work.

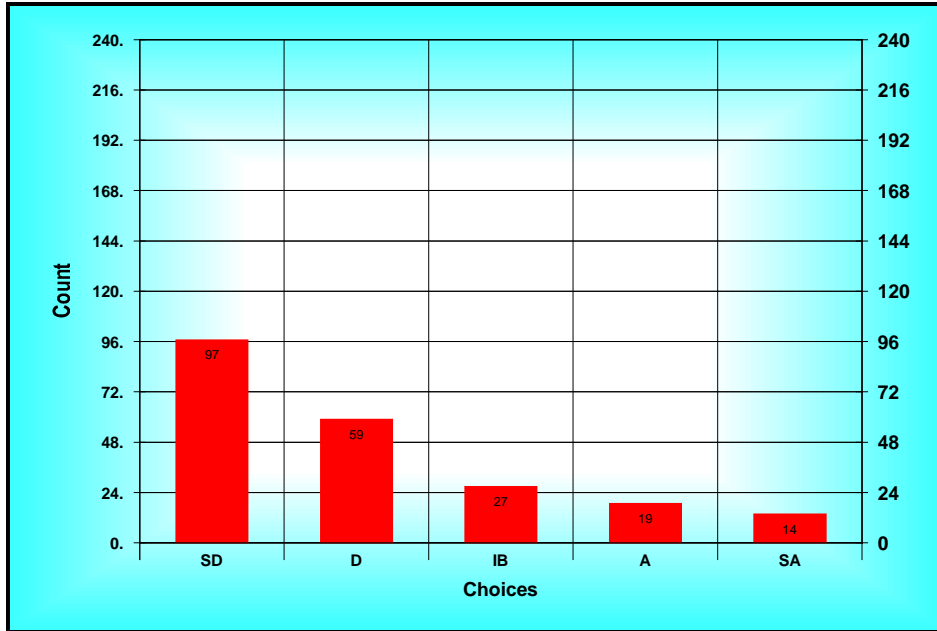
A) Ballot

Method: Custom Method
 Options: Allow Bypass
 Descriptions: SD = Strongly Disagree D = Disagree IB = In Between A = Agree SA = Strongly Agree

B) Results Spread

Choices	Count
SD(1)	97
D(2)	59
IB(3)	27
A(4)	19
SA(5)	14

Statistics
 Total 442
 Mean D(2.05)
 Mode SD
 High SA
 Low SD
 STD 1.23
 N 237
 n 216



Results Chart (13. I am dissatisfied with the fairness of my...)

14. I am dissatisfied with the quality of computer services.

A) Ballot

Method: Custom Method

Options: Allow Bypass

Descriptions: SD = Strongly Disagree D = Disagree IB = In Between A = Agree SA = Strongly Agree

B) Results Spread

Choices	Count
SD(1)	39
D(2)	101
IB(3)	41
A(4)	31
SA(5)	19

Statistics

Total 583

Mean IB(2.52)

Mode D

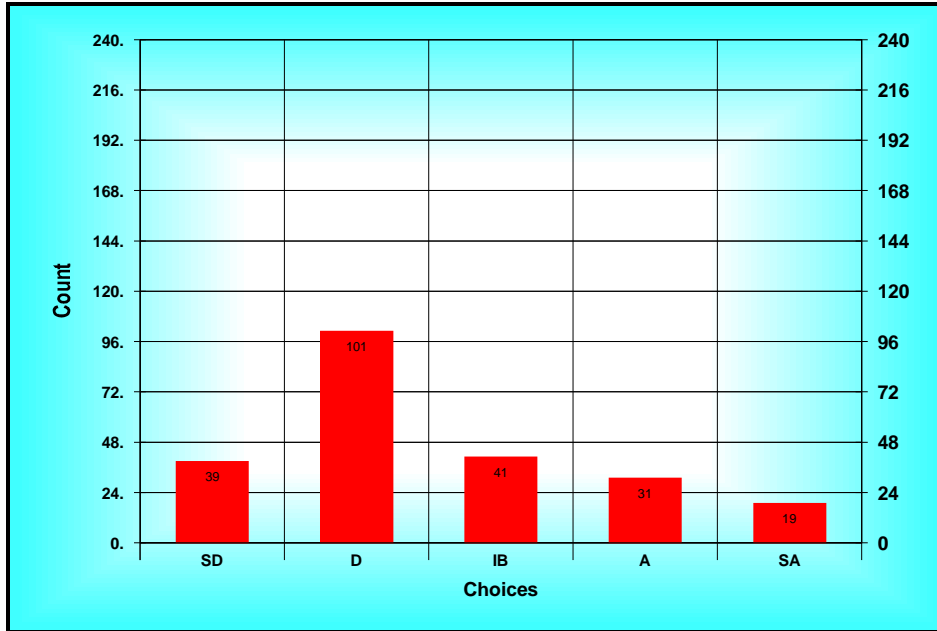
High SA

Low SD

STD 1.16

N 237

n 231



Results Chart (14. I am dissatisfied with the quality of computer...)

15. Communication between my chair and me is effective.

A) Ballot

Method: Custom Method

Options: Allow Bypass

Descriptions: SD = Strongly Disagree D = Disagree IB = In Between A = Agree SA = Strongly Agree

B) Results Spread

Choices	Count
SD(1)	13
D(2)	14
IB(3)	32
A(4)	88
SA(5)	76

Statistics

Total 869

Mean A(3.90)

Mode A

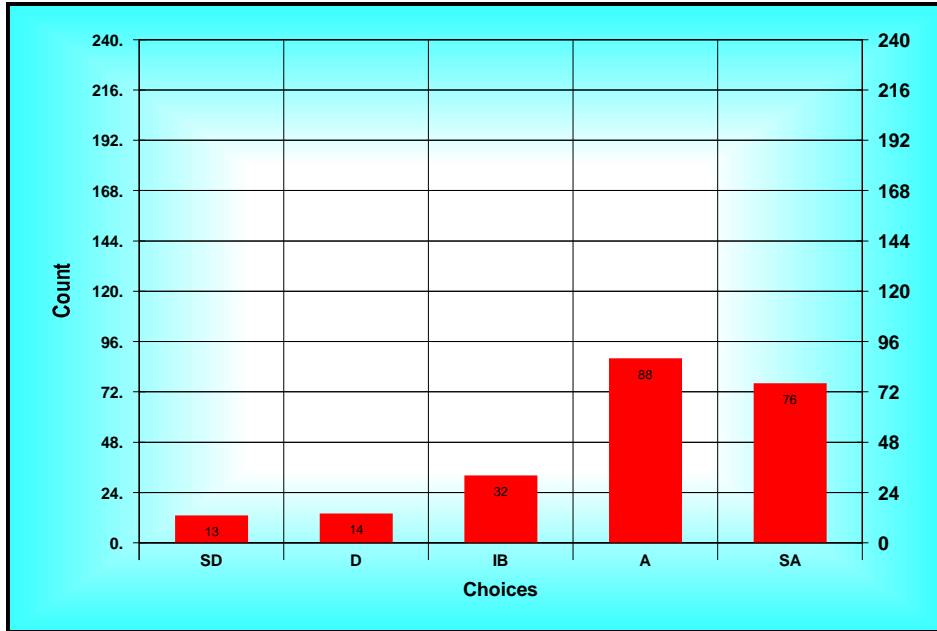
High SA

Low SD

STD 1.12

N 237

n 223



Results Chart (15. Communication between my chair and me is...)

16. NDSU is not a good place in which to work.

A) Ballot

Method: Custom Method

Options: Allow Bypass

Descriptions: SD = Strongly Disagree D = Disagree IB = In Between A = Agree SA = Strongly Agree

B) Results Spread

Choices	Count
SD(1)	89
D(2)	90
IB(3)	24
A(4)	13
SA(5)	11

Statistics

Total 448

Mean D(1.97)

Mode D

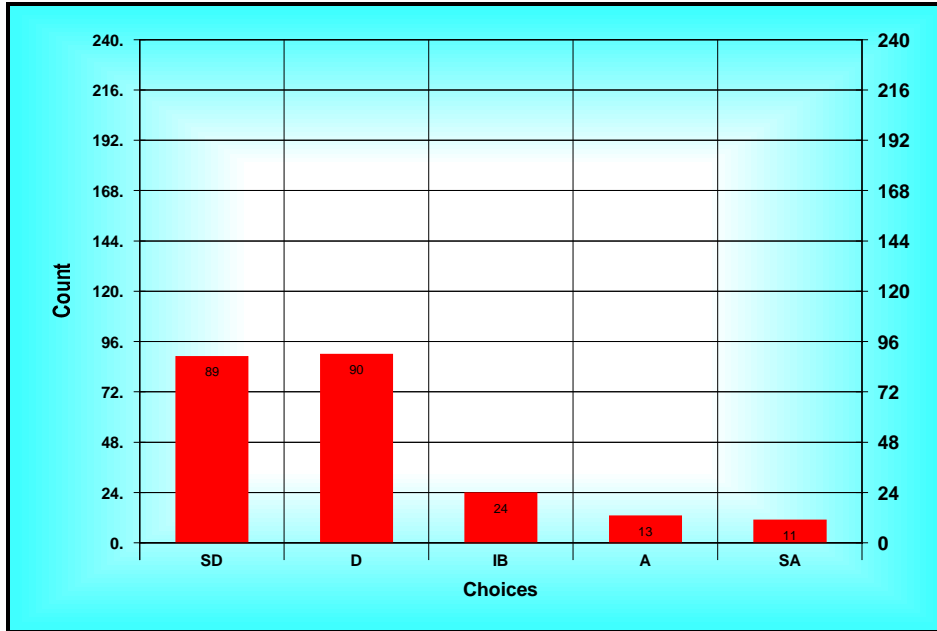
High SA

Low SD

STD 1.08

N 237

n 227



Results Chart (16. NDSU is not a good place in which to work.)

17. If I wanted to advance to a leadership role on campus, I could do so.

A) Ballot

Method: Custom Method

Options: Allow Bypass

Descriptions: SD = Strongly Disagree D = Disagree IB = In Between A = Agree SA = Strongly Agree

B) Results Spread

Choices	Count
SD(1)	27
D(2)	40
IB(3)	50
A(4)	75
SA(5)	27

Statistics

Total 692

Mean IB(3.16)

Mode A

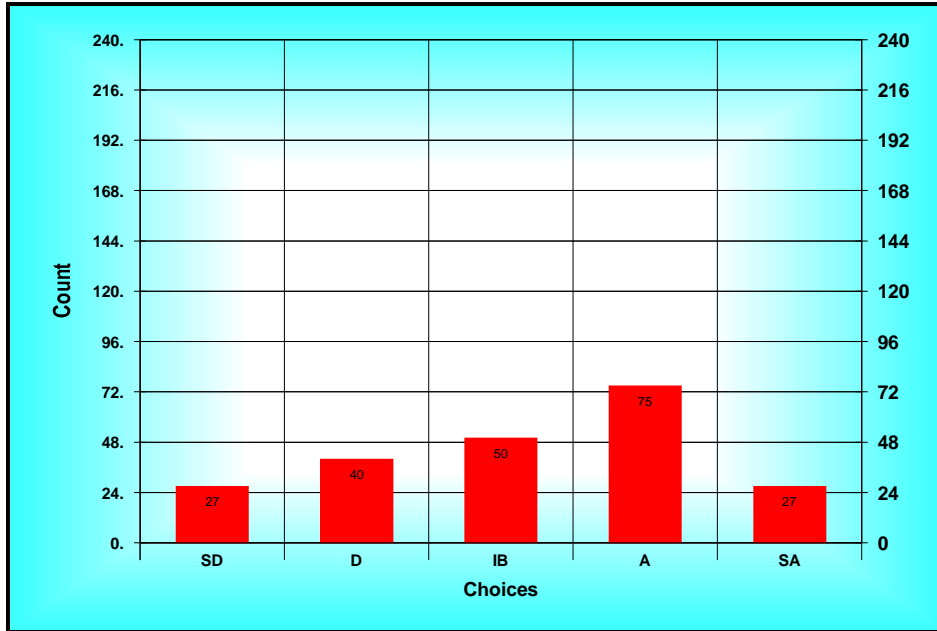
High SA

Low SD

STD 1.22

N 237

n 219



Results Chart (17. If I wanted to advance to a leadership role on...)

18. I do not feel a sense of unity and cohesion among the faculty in my department.

A) Ballot

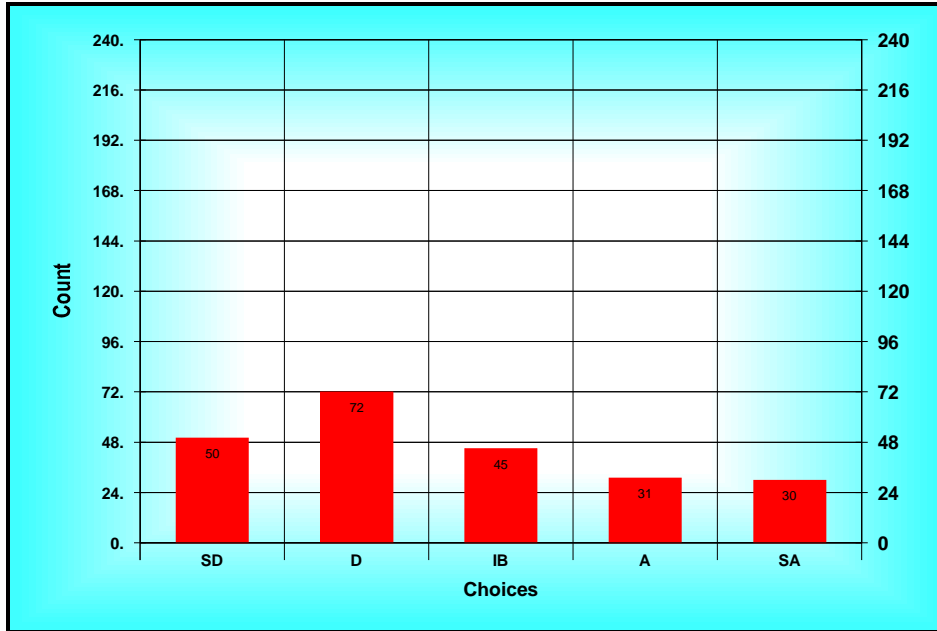
Method: Custom Method
 Options: Allow Bypass
 Descriptions: SD = Strongly Disagree D = Disagree IB = In Between A = Agree SA = Strongly Agree

B) Results Spread

<i>Choices</i>	<i>Count</i>
<i>SD(1)</i>	<i>50</i>
<i>D(2)</i>	<i>72</i>
<i>IB(3)</i>	<i>45</i>
<i>A(4)</i>	<i>31</i>
<i>SA(5)</i>	<i>30</i>

Statistics

Total 603
Mean IB(2.64)
Mode D
High SA
Low SD
STD 1.32
N 237
n 228



Results Chart (18. I do not feel a sense of unity and cohesion among...)

19. The formal mentoring program is effective.

A) Ballot

Method: Custom Method

Options: Allow Bypass

Descriptions: SD = Strongly Disagree D = Disagree IB = In Between A = Agree SA = Strongly Agree

B) Results Spread

Choices	Count
SD(1)	28
D(2)	38
IB(3)	62
A(4)	52
SA(5)	11

Statistics

Total 553

Mean IB(2.90)

Mode IB

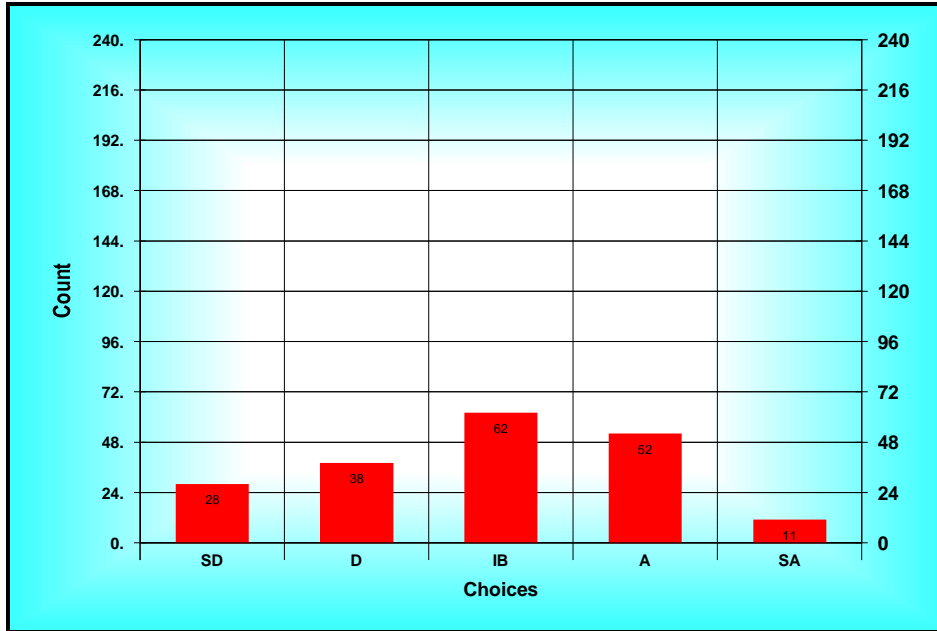
High SA

Low SD

STD 1.13

N 237

n 191



Results Chart (19. The formal mentoring program is effective.)

20. My department is a good place in which to work.

A) Ballot

Method: Custom Method

Options: Allow Bypass

Descriptions: SD = Strongly Disagree D = Disagree IB = In Between A = Agree SA = Strongly Agree

B) Results Spread

<i>Choices</i>	<i>Count</i>
<i>SD(1)</i>	<i>13</i>
<i>D(2)</i>	<i>15</i>
<i>IB(3)</i>	<i>30</i>
<i>A(4)</i>	<i>92</i>
<i>SA(5)</i>	<i>80</i>

Statistics

Total 901

Mean A(3.92)

Mode A

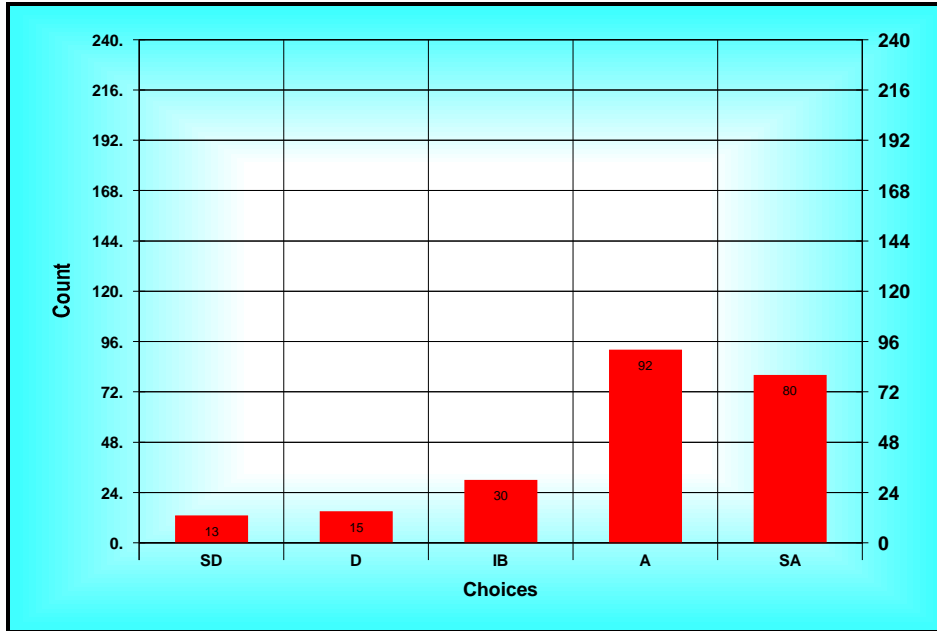
High SA

Low SD

STD 1.12

N 237

n 230



Results Chart (20. My department is a good place in which to work.)

21. I am satisfied with what is expected of me as a researcher.

A) Ballot

Method: Custom Method

Options: Allow Bypass

Descriptions: SD = Strongly Disagree D = Disagree IB = In Between A = Agree SA = Strongly Agree

B) Results Spread

Choices	Count
SD(1)	6
D(2)	22
IB(3)	33
A(4)	118
SA(5)	35

Statistics

Total 796

Mean A(3.72)

Mode A

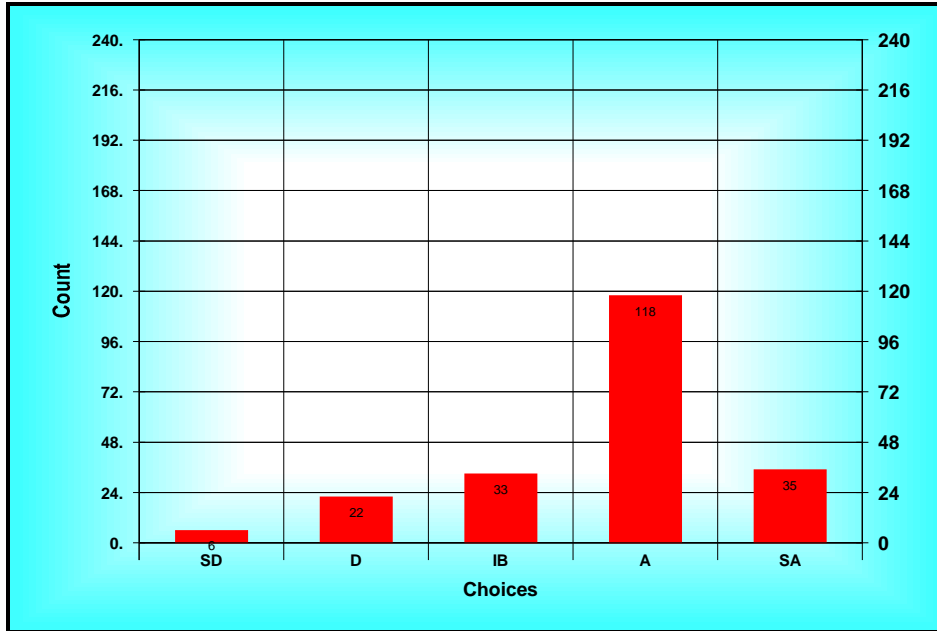
High SA

Low SD

STD 0.95

N 237

n 214



Results Chart (21. I am satisfied with what is expected of me as a...)

22. I feel a sense of unity and cohesion among the faculty in my College.

A) Ballot

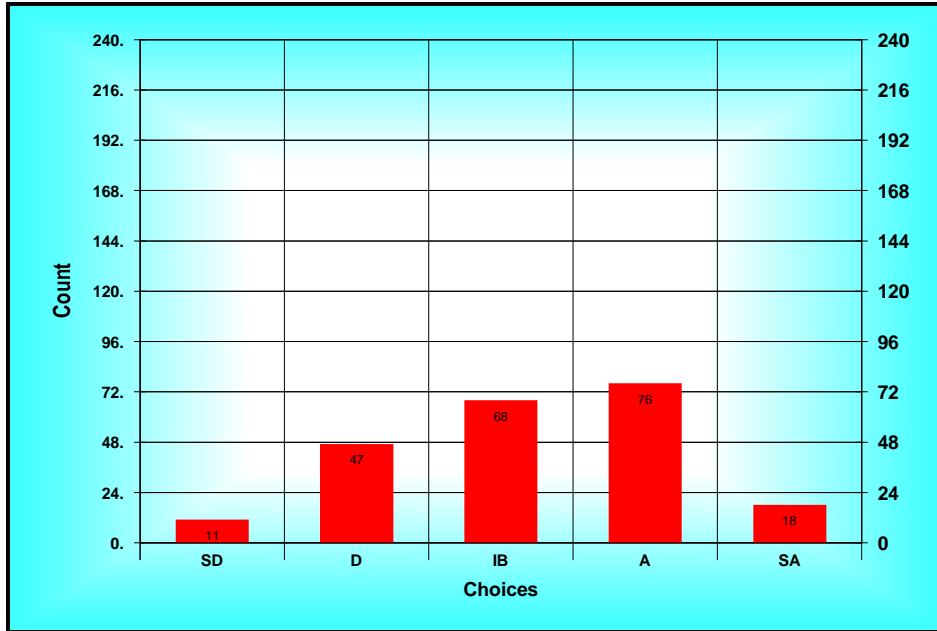
Method: Custom Method
 Options: Allow Bypass
 Descriptions: SD = Strongly Disagree D = Disagree IB = In Between A = Agree SA = Strongly Agree

B) Results Spread

Choices	Count
SD(1)	11
D(2)	47
IB(3)	68
A(4)	76
SA(5)	18

Statistics

Total 703
 Mean IB(3.20)
 Mode A
 High SA
 Low SD
 STD 1.03
 N 237
 n 220



Results Chart (22. I feel a sense of unity and cohesion among the...)

23. I am satisfied with the amount of time I have to conduct research.

A) Ballot

Method: Custom Method

Options: Allow Bypass

Descriptions: SD = Strongly Disagree D = Disagree IB = In Between A = Agree SA = Strongly Agree

B) Results Spread

<i>Choices</i>	<i>Count</i>
<i>SD(1)</i>	<i>39</i>
<i>D(2)</i>	<i>59</i>
<i>IB(3)</i>	<i>37</i>
<i>A(4)</i>	<i>65</i>
<i>SA(5)</i>	<i>13</i>

Statistics

Total 593

Mean IB(2.78)

Mode A

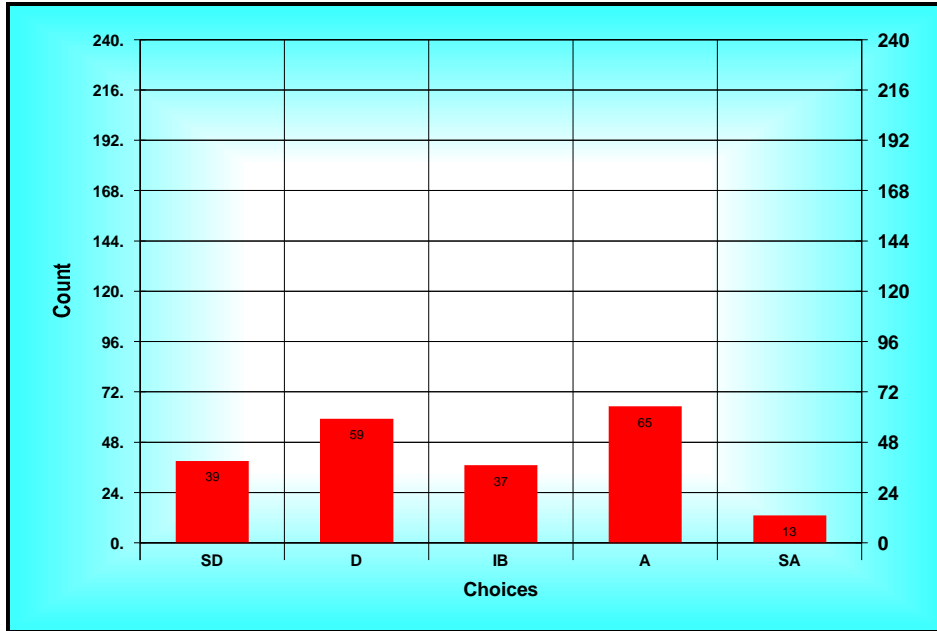
High SA

Low SD

STD 1.23

N 237

n 213



Results Chart (23. I am satisfied with the amount of time I have to...)

24. I am satisfied with the financial support (travel, equipment, etc) my department gives me.

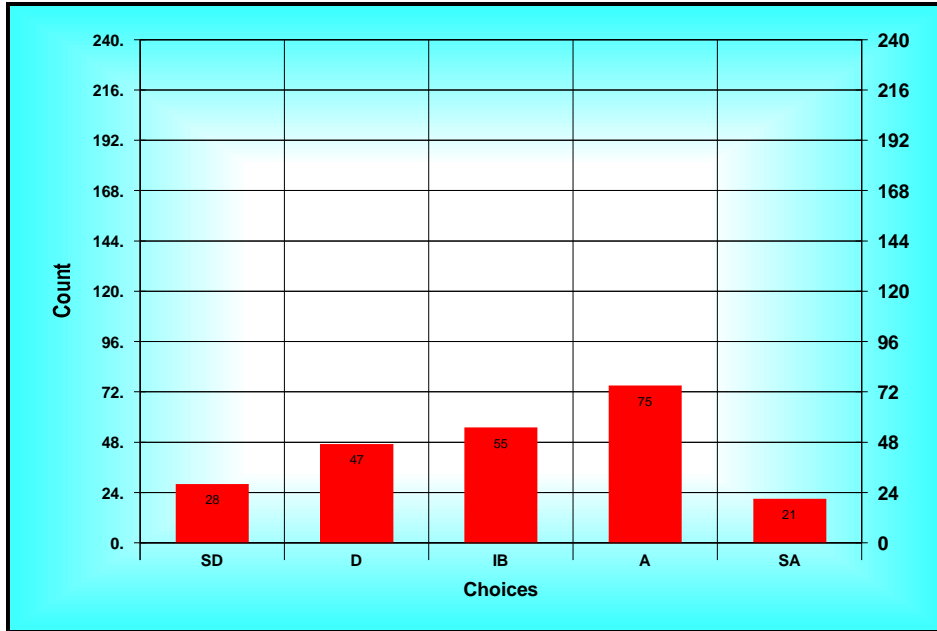
A) Ballot

Method: Custom Method
 Options: Allow Bypass
 Descriptions: SD = Strongly Disagree D = Disagree IB = In Between A = Agree SA = Strongly Agree

B) Results Spread

<i>Choices</i>	<i>Count</i>
<i>SD(1)</i>	<i>28</i>
<i>D(2)</i>	<i>47</i>
<i>IB(3)</i>	<i>55</i>
<i>A(4)</i>	<i>75</i>
<i>SA(5)</i>	<i>21</i>

Statistics
 Total 692
 Mean IB(3.06)
 Mode A
 High SA
 Low SD
 STD 1.19
 N 237
 n 226



Results Chart (24. I am satisfied with the financial support...)

25. Departmental (chair and colleagues) do what they can to make any family leave situation and the tenure-track compatible.

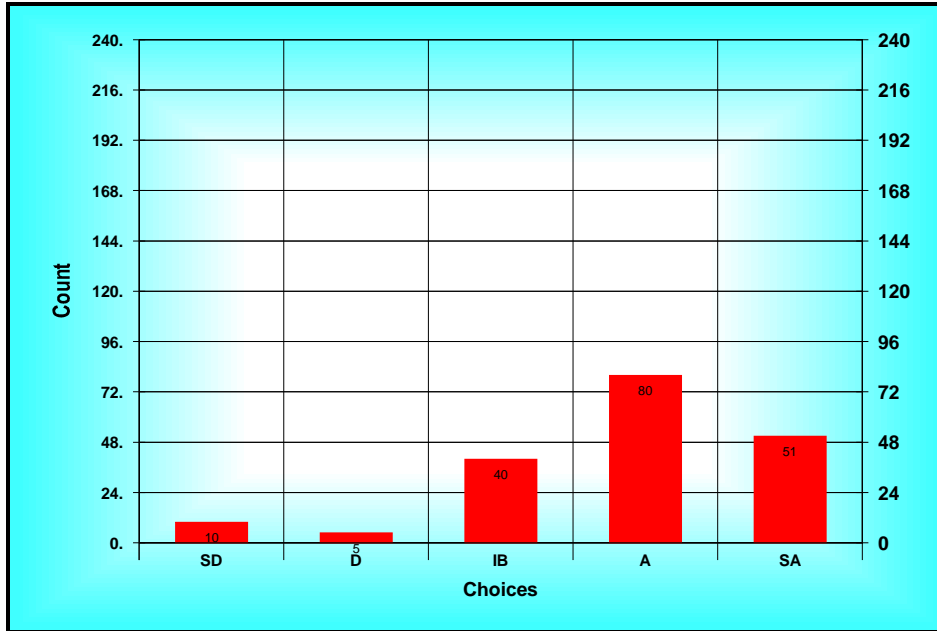
A) Ballot

Method: Custom Method
 Options: Allow Bypass
 Descriptions: SD = Strongly Disagree D = Disagree IB = In Between A = Agree SA = Strongly Agree

B) Results Spread

<i>Choices</i>	<i>Count</i>
<i>SD(1)</i>	<i>10</i>
<i>D(2)</i>	<i>5</i>
<i>IB(3)</i>	<i>40</i>
<i>A(4)</i>	<i>80</i>
<i>SA(5)</i>	<i>51</i>

Statistics
 Total 715
 Mean A(3.84)
 Mode A
 High SA
 Low SD
 STD 1.03
 N 237
 n 186



Results Chart (25. Departmental (chair and colleagues) do what they...)

26. I am dissatisfied with the balance I am able to strike between professional time and personal/family time.

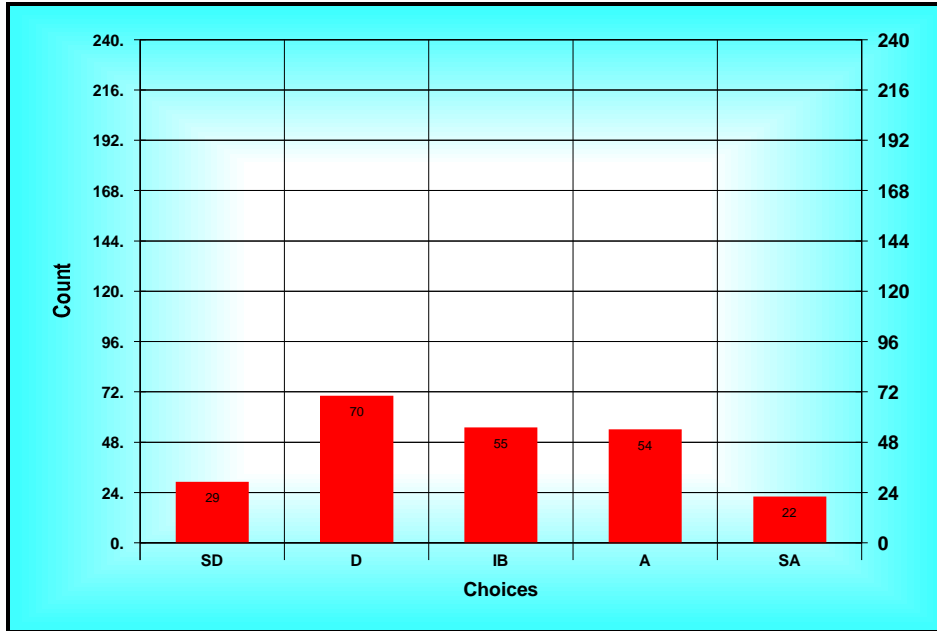
A) Ballot

Method: Custom Method
 Options: Allow Bypass
 Descriptions: SD = Strongly Disagree D = Disagree IB = In Between A = Agree SA = Strongly Agree

B) Results Spread

<i>Choices</i>	<i>Count</i>
<i>SD(1)</i>	29
<i>D(2)</i>	70
<i>IB(3)</i>	55
<i>A(4)</i>	54
<i>SA(5)</i>	22

Statistics
 Total 660
 Mean IB(2.87)
 Mode D
 High SA
 Low SD
 STD 1.19
 N 237
 n 230



Results Chart (26. I am dissatisfied with the balance I am able to...)

27. There are faculty similar to me in my college.

A) Ballot

Method: Custom Method

Options: Allow Bypass

Descriptions: SD = Strongly Disagree D = Disagree IB = In Between A = Agree SA = Strongly Agree

B) Results Spread

Choices	Count
SD(1)	6
D(2)	26
IB(3)	41
A(4)	116
SA(5)	34

Statistics

Total 815

Mean A(3.65)

Mode A

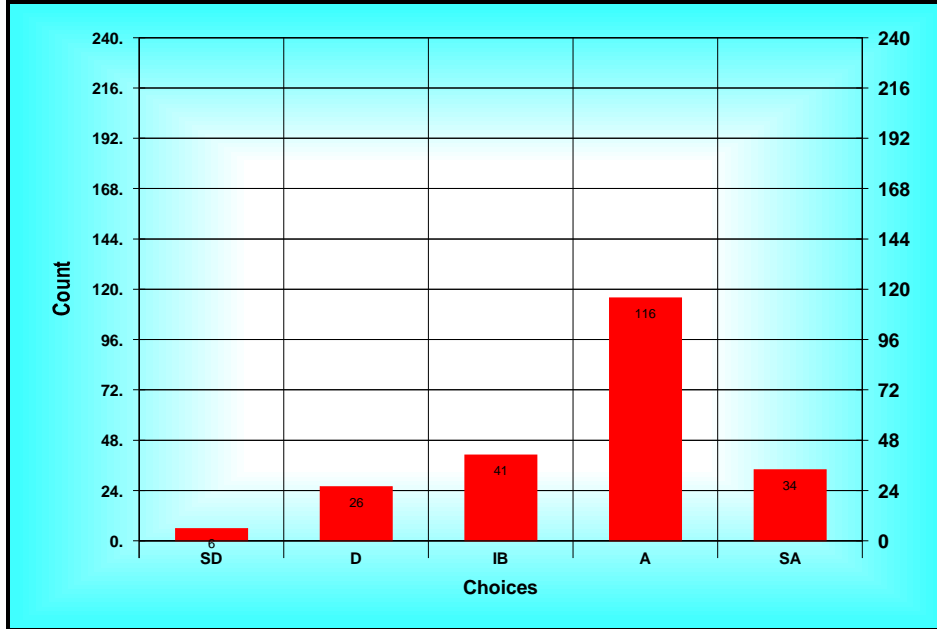
High SA

Low SD

STD 0.96

N 237

n 223



Results Chart (27. There are faculty similar to me in my college.)

28. I am satisfied with the professional/collegial support my department gives me.

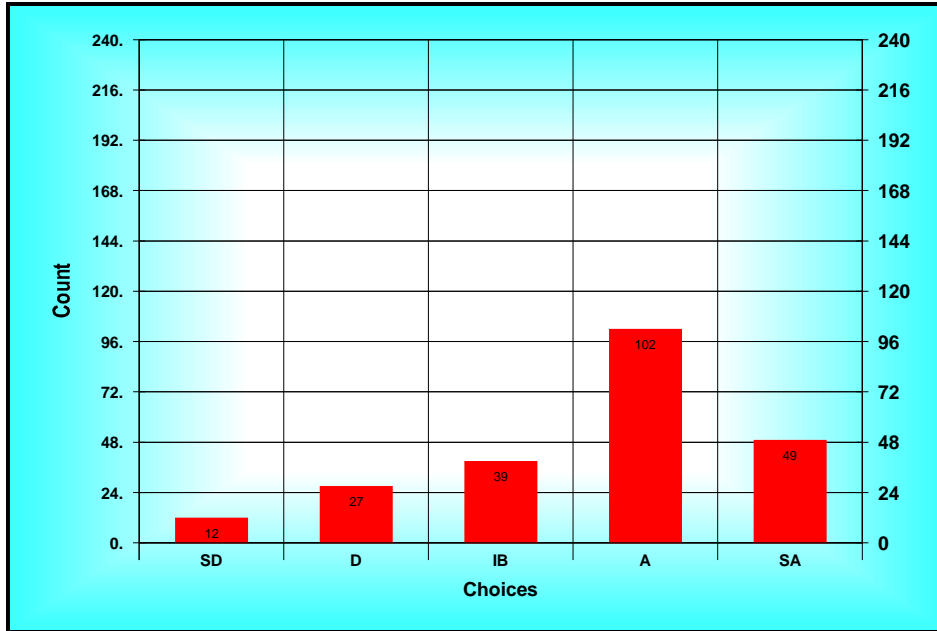
A) Ballot

Method: Custom Method
 Options: Allow Bypass
 Descriptions: SD = Strongly Disagree D = Disagree IB = In Between A = Agree SA = Strongly Agree

B) Results Spread

Choices	Count
SD(1)	12
D(2)	27
IB(3)	39
A(4)	102
SA(5)	49

Statistics
 Total 836
 Mean A(3.65)
 Mode A
 High SA
 Low SD
 STD 1.10
 N 237
 n 229



Results Chart (28. I am satisfied with the professional/collegial...)

29. I do not like the Fargo community.

A) Ballot

Method: Custom Method

Options: Allow Bypass

Descriptions: SD = Strongly Disagree D = Disagree IB = In Between A = Agree SA = Strongly Agree

B) Results Spread

Choices	Count
SD(1)	120
D(2)	78
IB(3)	25
A(4)	6
SA(5)	4

Statistics

Total 395

Mean D(1.70)

Mode SD

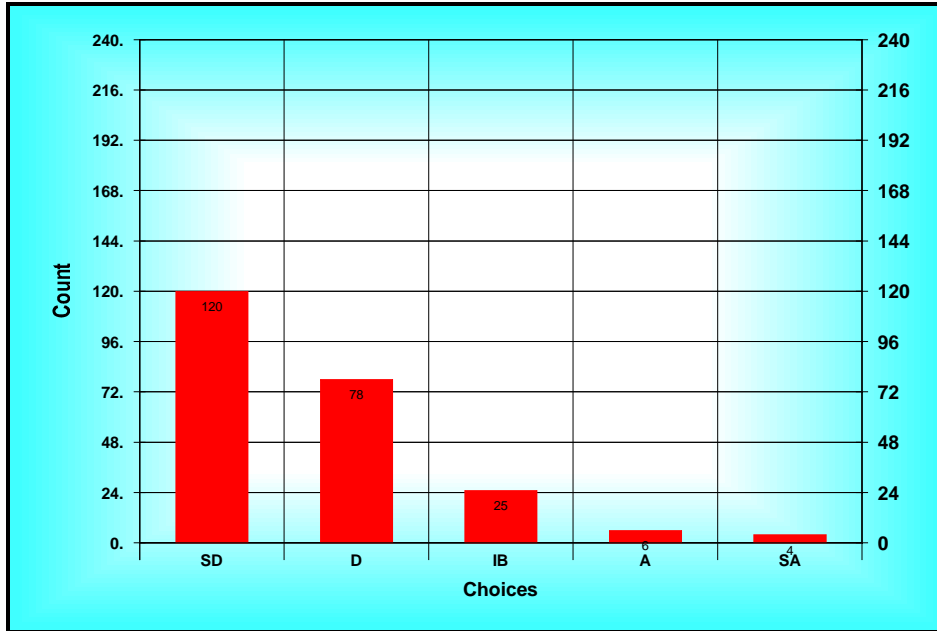
High SA

Low SD

STD 0.89

N 237

n 233



Results Chart (29. I do not like the Fargo community.)

30. There are sufficient opportunities to collaborate on research with other faculty at NDSU.

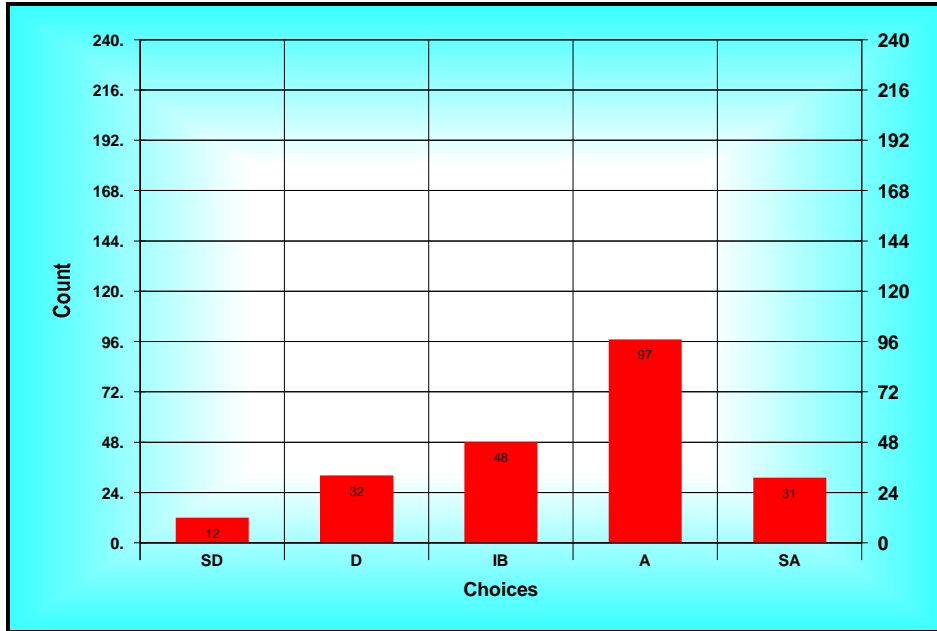
A) Ballot

Method: Custom Method
 Options: Allow Bypass
 Descriptions: SD = Strongly Disagree D = Disagree IB = In Between A = Agree SA = Strongly Agree

B) Results Spread

<i>Choices</i>	<i>Count</i>
<i>SD(1)</i>	<i>12</i>
<i>D(2)</i>	<i>32</i>
<i>IB(3)</i>	<i>48</i>
<i>A(4)</i>	<i>97</i>
<i>SA(5)</i>	<i>31</i>

Statistics
 Total 763
 Mean IB(3.47)
 Mode A
 High SA
 Low SD
 STD 1.07
 N 237
 n 220



Results Chart (30. There are sufficient opportunities to collaborate...)

31. I am satisfied with my salary at NDSU.

A) Ballot

Method: Custom Method

Options: Allow Bypass

Descriptions: SD = Strongly Disagree D = Disagree IB = In Between A = Agree SA = Strongly Agree

B) Results Spread

Choices	Count
SD(1)	47
D(2)	67
IB(3)	43
A(4)	68
SA(5)	8

Statistics

Total 622

Mean IB(2.67)

Mode A

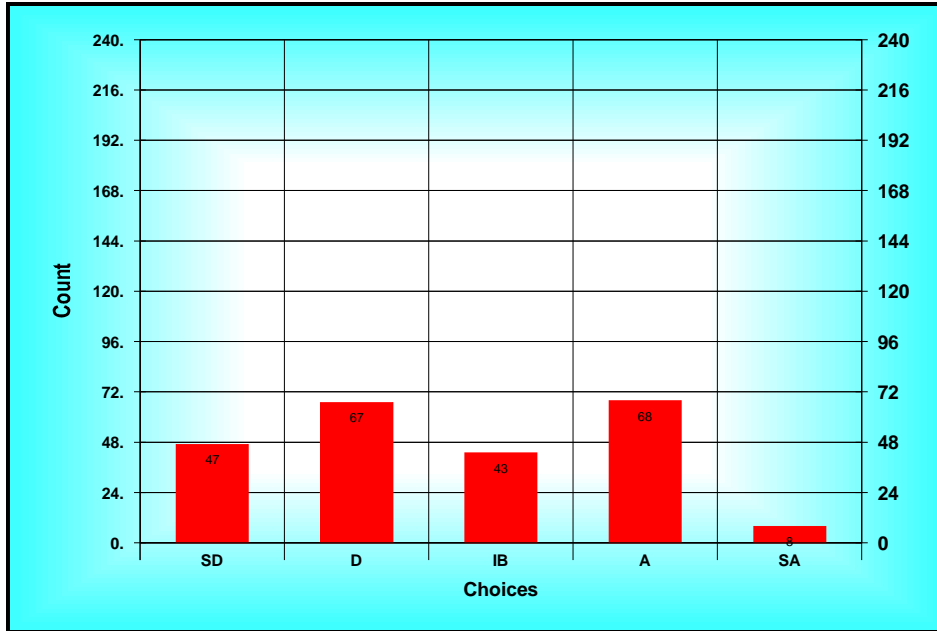
High SA

Low SD

STD 1.19

N 237

n 233



Results Chart (31. I am satisfied with my salary at NDSU.)

32. I am satisfied with the quality of NDSU’s graduate students.

A) Ballot

Method: Custom Method

Options: Allow Bypass

Descriptions: SD = Strongly Disagree D = Disagree IB = In Between A = Agree SA = Strongly Agree

B) Results Spread

<i>Choices</i>	<i>Count</i>
<i>SD(1)</i>	22
<i>D(2)</i>	37
<i>IB(3)</i>	55
<i>A(4)</i>	82
<i>SA(5)</i>	9

Statistics

Total 634

Mean IB(3.09)

Mode A

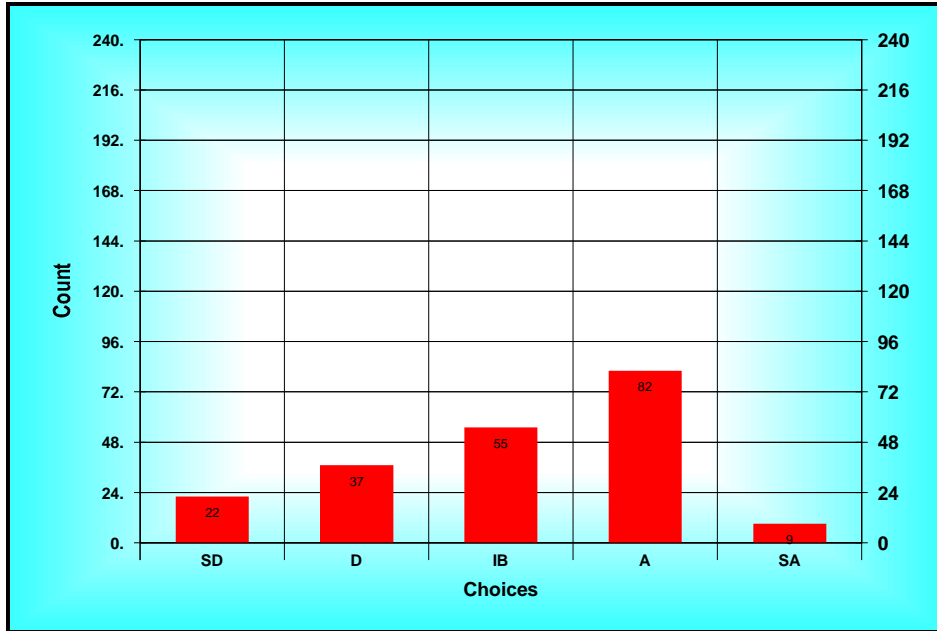
High SA

Low SD

STD 1.09

N 237

n 205



Results Chart (32. I am satisfied with the quality of NDSU’s...)

33. I am satisfied with the quality of NDSU’s undergraduate students.

A) Ballot

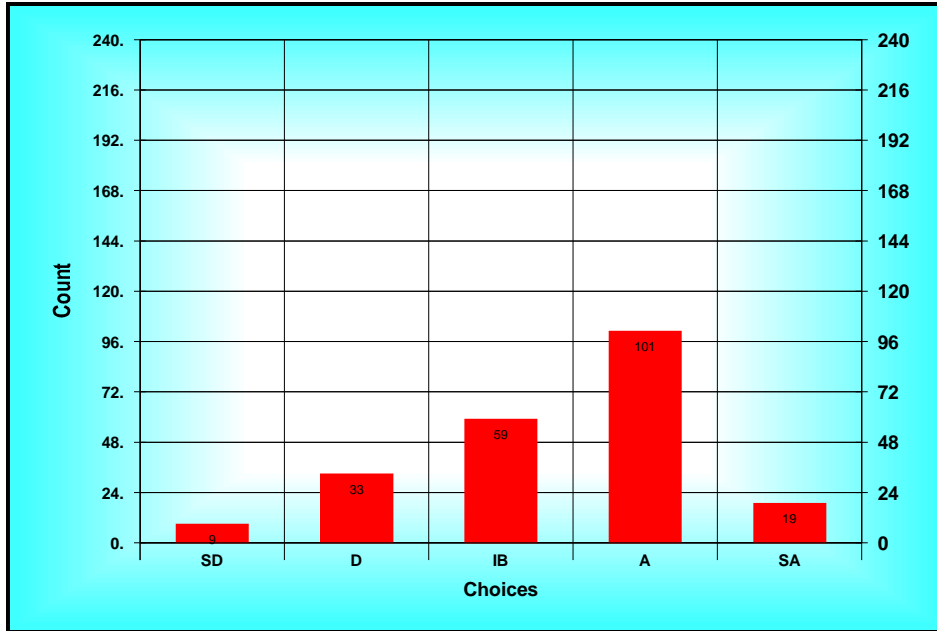
Method: Custom Method
 Options: Allow Bypass
 Descriptions: SD = Strongly Disagree D = Disagree IB = In Between A = Agree SA = Strongly Agree

B) Results Spread

<i>Choices</i>	<i>Count</i>
<i>SD(1)</i>	<i>9</i>
<i>D(2)</i>	<i>33</i>
<i>IB(3)</i>	<i>59</i>
<i>A(4)</i>	<i>101</i>
<i>SA(5)</i>	<i>19</i>

Statistics

Total 751
Mean IB(3.40)
Mode A
High SA
Low SD
STD 0.98
N 237
n 221



Results Chart (33. I am satisfied with the quality of NDSU’s...)

34. I am satisfied with the quality of NDSU’s library support and services.

A) Ballot

Method: Custom Method

Options: Allow Bypass

Descriptions: SD = Strongly Disagree D = Disagree IB = In Between A = Agree SA = Strongly Agree

B) Results Spread

Choices	Count
SD(1)	47
D(2)	40
IB(3)	52
A(4)	75
SA(5)	11

Statistics

Total 638

Mean IB(2.84)

Mode A

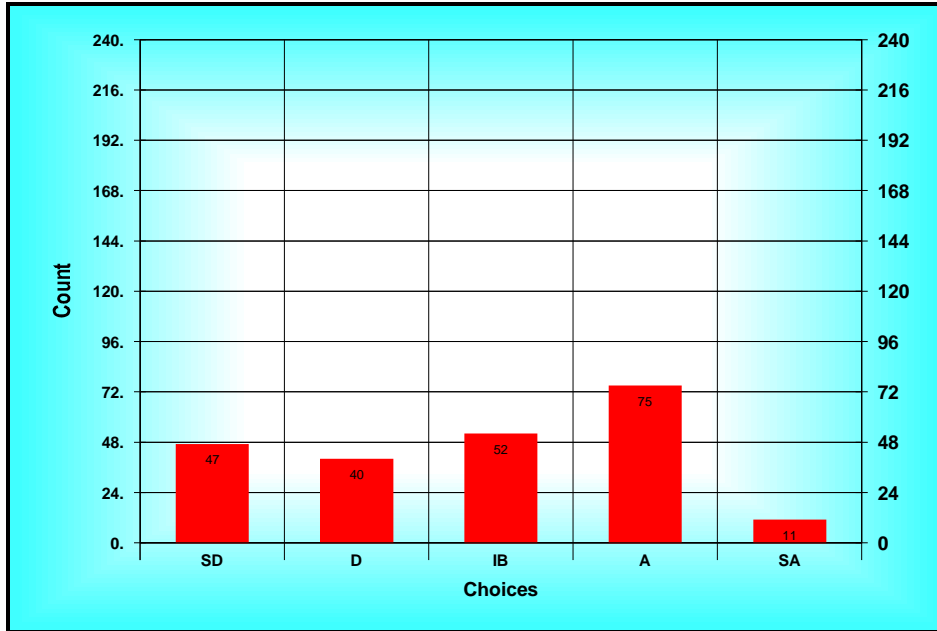
High SA

Low SD

STD 1.23

N 237

n 225



Results Chart (34. I am satisfied with the quality of NDSU's ...)

35. My job at NDSU is stressful due to the difficulty in balancing work and family.

A) Ballot

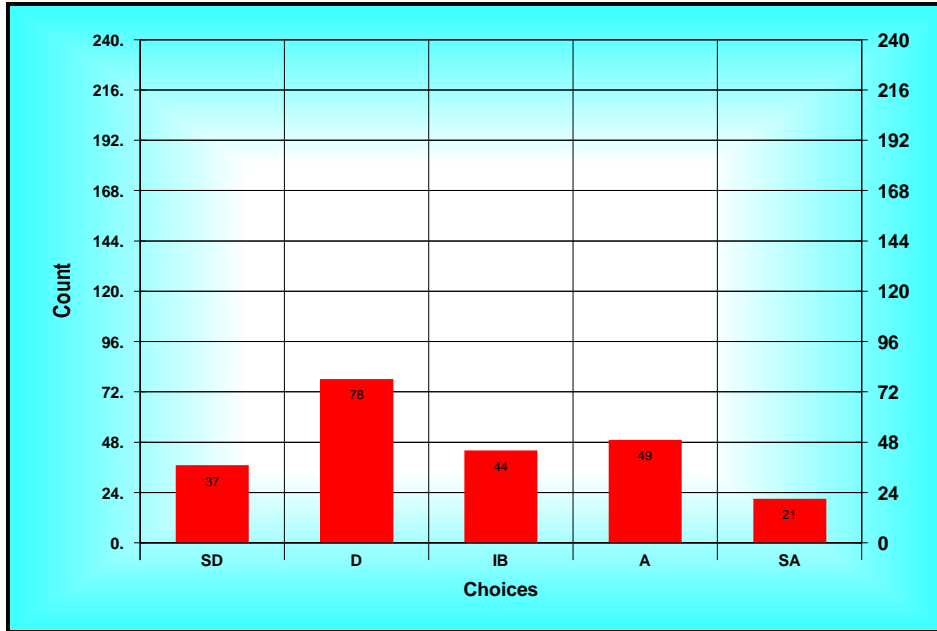
Method: Custom Method
 Options: Allow Bypass
 Descriptions: SD = Strongly Disagree D = Disagree IB = In Between A = Agree SA = Strongly Agree

B) Results Spread

<i>Choices</i>	<i>Count</i>
<i>SD(1)</i>	<i>37</i>
<i>D(2)</i>	<i>78</i>
<i>IB(3)</i>	<i>44</i>
<i>A(4)</i>	<i>49</i>
<i>SA(5)</i>	<i>21</i>

Statistics

Total 626
Mean IB(2.73)
Mode D
High SA
Low SD
STD 1.23
N 237
n 229



Results Chart (35. My job at NDSU is stressful due to the difficulty...)