

For current faculty (Survey)

Survey Results

1 filter(s) defined

Total Number of Respondents (N): 109 of 237

Filter- Female

1. Sex:

A) Ballot

Method: Multiple Selection
Options: Allow Bypass
Maximum Selections: [1]
Descriptions: Please choose one
Number of Choices: 2

B) Results Spread

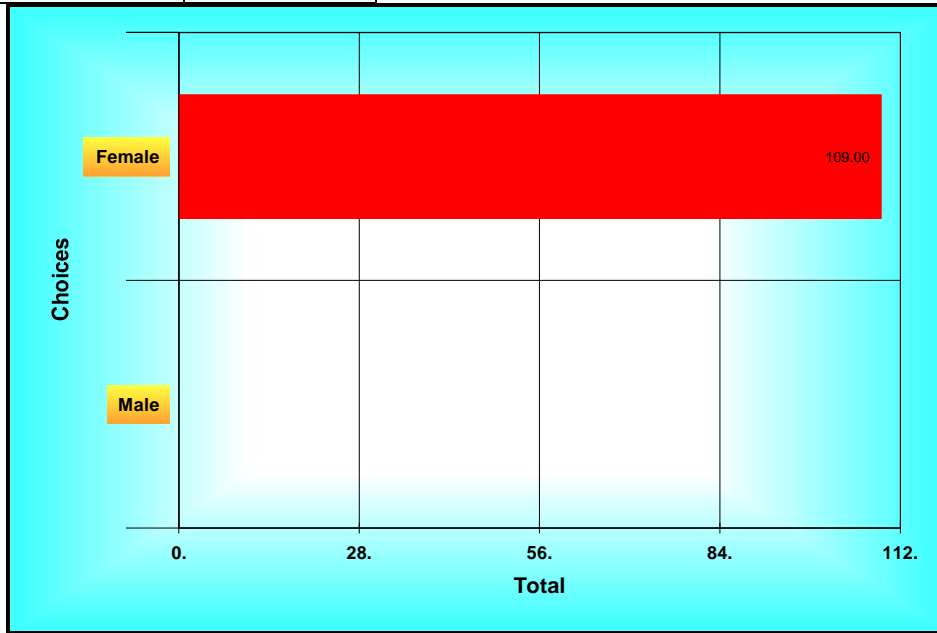
Statistics

Total 1.00

N 109

Table Sorted By Total

Choices	Total
Female	109
Male	0



Results Chart (1. Sex:)

2. Rank at NDSU:

A) Ballot

Method: Multiple Selection
 Options: Allow Bypass
 Enter Text for Last Choice
 Maximum Selections: [1]
 Descriptions: Please choose one
 Number of Choices: 4

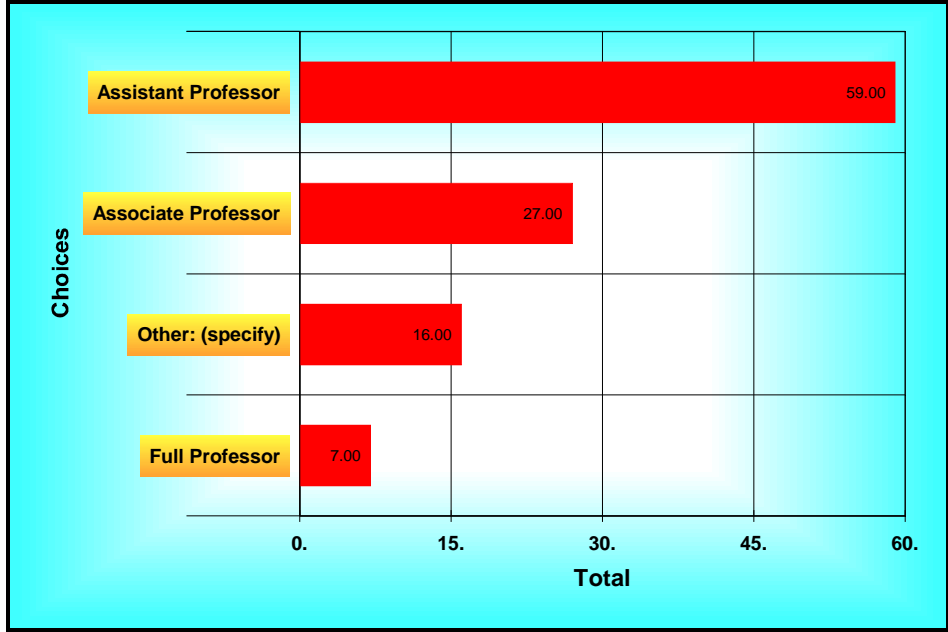
B) Results Spread

Statistics
Total 4.00
N 109
Table Sorted By Total

C) Text Responses

1. lecturer
2. lecturer
3. Lecturer
4. senior lecturer
5. Lecturer
6. Assistant professor but part-time, non-tenure track
7. Emeritus
8. Administrator-many of the questions below do not apply to me
9. Sr. Lecturer
10. Research Assistant Professor
11. Senior Lecturer
12. Senior Lecturer
13. Senior Lecturer
14. Lecturer
15. lecturer
16. Lecturer - special hire

Choices	Total
Assistant Professor	59
Associate Professor	27
Other: (specify)	16
Full Professor	7



Results Chart (2. Rank at NDSU:)

3. Number of years at that rank:

A) Ballot

Method: Multiple Selection
 Options: Allow Bypass
 Maximum Selections: [1]
 Descriptions: Please choose one
 Number of Choices: 7

B) Results Spread

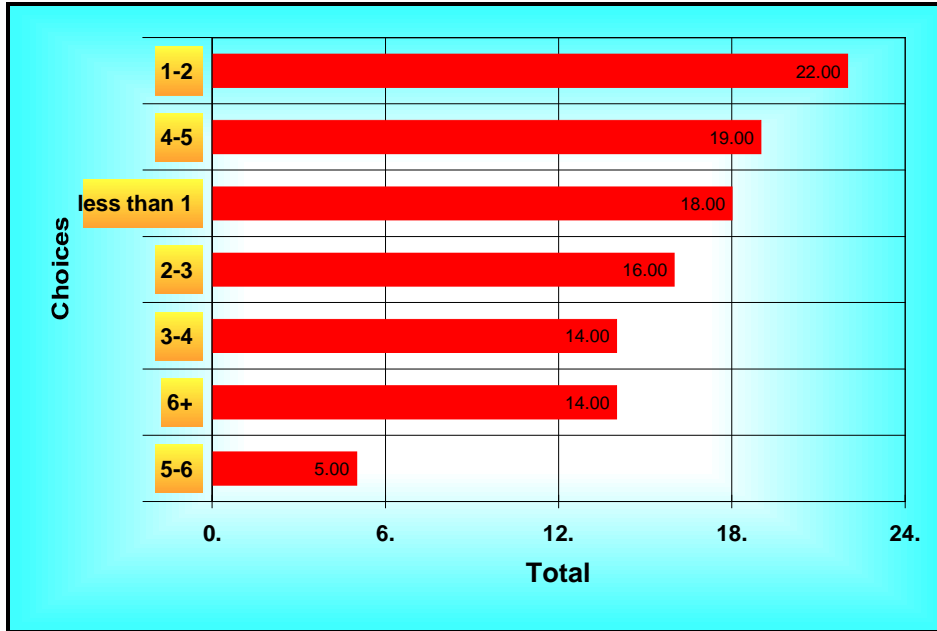
Statistics

Total 7.00

N 109

Table Sorted By Total

Choices	Total
1-2	22
4-5	19
less than 1	18
2-3	16
3-4	14
6+	14
5-6	5



Results Chart (3. Number of years at that rank:)

4. In what area is your appointment?

A) Ballot

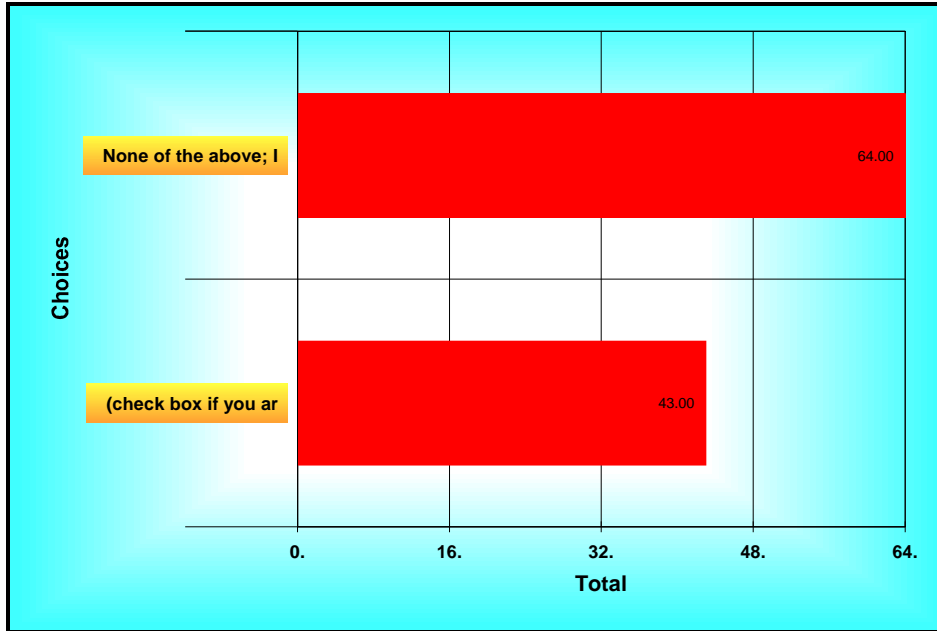
Method: Multiple Selection
 Options: Allow Bypass
 Maximum Selections: [1]
 Descriptions: Please choose one
 Number of Choices: 2

B) Results Spread

Statistics
 Total 2.00
 N 109

Table Sorted By Total

Choices	Total
None of the above; I was not in Science, Math, Eng	64
(check box if you are in a Science, Math, Engineer	43



Results Chart (4. In what area is your appointment?)

5. Current relationship status:

A) Ballot

Method: Multiple Selection
 Options: Allow Bypass
 Enter Text for Last Choice
 Maximum Selections: [1]
 Descriptions: Please choose one
 Number of Choices: 8

B) Results Spread

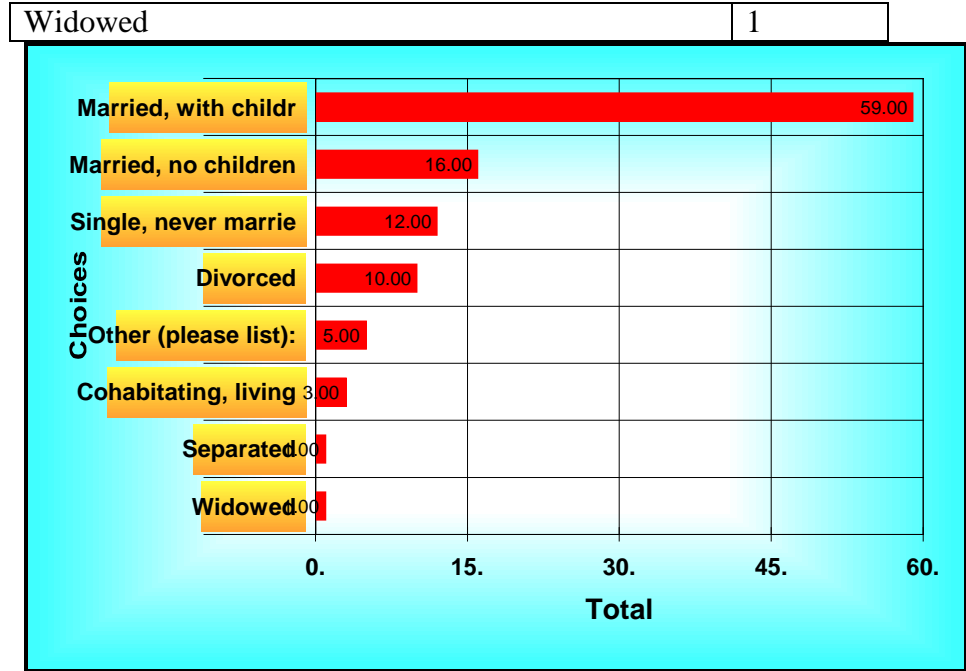
Statistics
 Total 8.00
 N 109

Table Sorted By Total

C) Text Responses

1. Single, with children :)
2. Domestic Partner
3. divorced with one child
4. Divorced with children
5. No longer cohabitating, or living with my our partner in an intimate relationship

Choices	Total
Married, with children	59
Married, no children	16
Single, never married	12
Divorced	10
Other (please list):	5
Cohabitating, living with your partner in an intim	3
Separated	1



Results Chart (5. Current relationship status:)

6. The tenure process is clear.

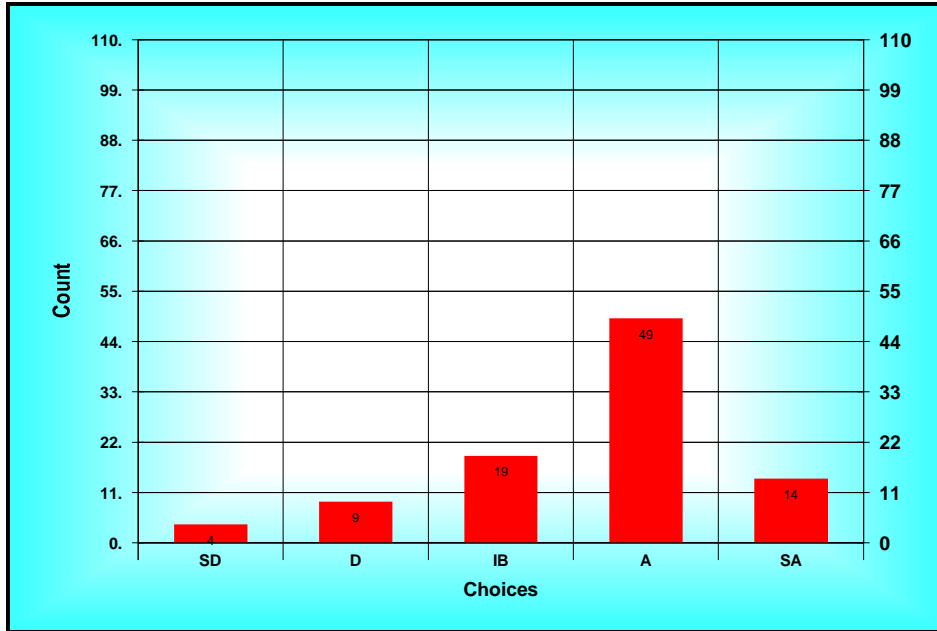
A) Ballot

Method: Custom Method
 Options: Allow Bypass
 Descriptions: SD = Strongly Disagree D = Disagree IB = In Between A = Agree SA = Strongly Agree

B) Results Spread

<i>Choices</i>	<i>Count</i>
<i>SD(1)</i>	4
<i>D(2)</i>	9
<i>IB(3)</i>	19
<i>A(4)</i>	49
<i>SA(5)</i>	14

Statistics
 Total 345
 Mean A(3.63)
 Mode A
 High SA
 Low SD
 STD 0.99
 N 109
 n 95



Results Chart (6. The tenure process is clear.)

7. I am satisfied with the number of courses I taught.

A) Ballot

Method: Custom Method

Options: Allow Bypass

Descriptions: SD = Strongly Disagree D = Disagree IB = In Between A = Agree SA = Strongly Agree

B) Results Spread

Choices	Count
SD(1)	2
D(2)	12
IB(3)	16
A(4)	43
SA(5)	24

Statistics

Total 366

Mean A(3.77)

Mode A

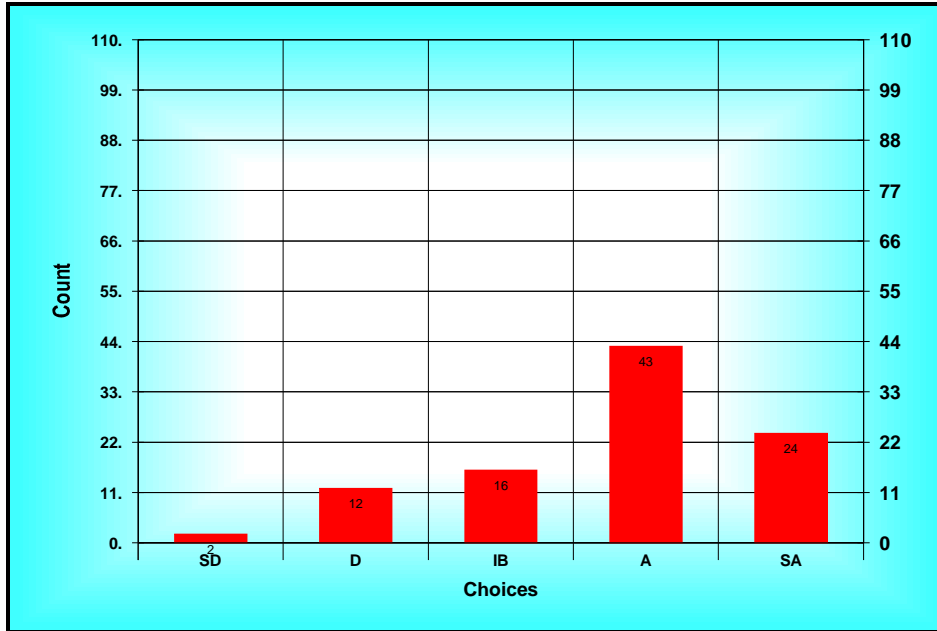
High SA

Low SD

STD 1.03

N 109

n 97



Results Chart (7. I am satisfied with the number of courses I...)

8. Communication within my department is not effective.

A) Ballot

Method: Custom Method

Options: Allow Bypass

Descriptions: SD = Strongly Disagree D = Disagree IB = In Between A = Agree SA = Strongly Agree

B) Results Spread

Choices	Count
SD(1)	24
D(2)	36
IB(3)	19
A(4)	12
SA(5)	12

Statistics

Total 261

Mean IB(2.53)

Mode D

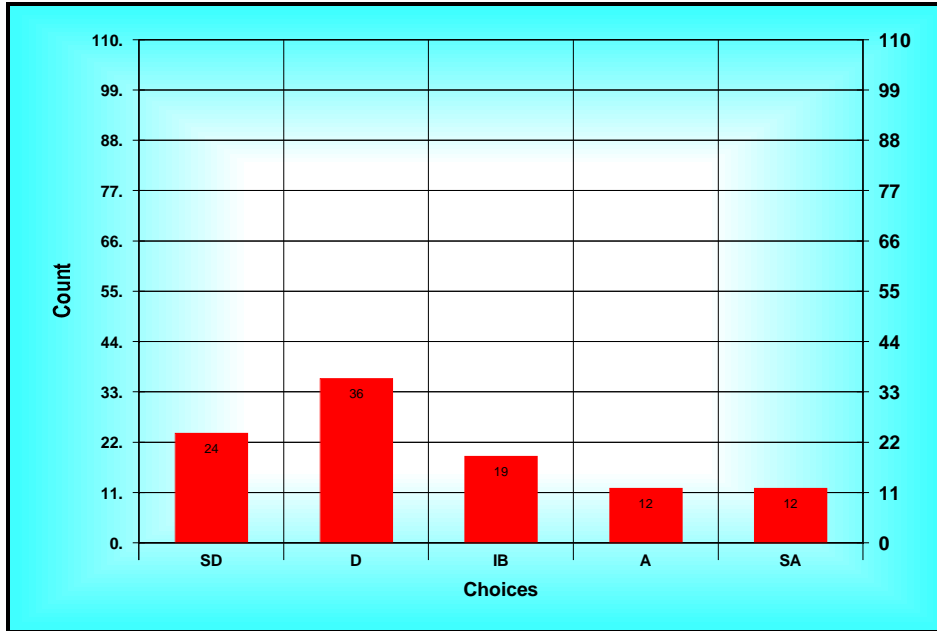
High SA

Low SD

STD 1.29

N 109

n 103



Results Chart (8. Communication within my department is not...)

9. The expectations for performance as a department colleague are clear.

A) Ballot

Method: Custom Method

Options: Allow Bypass

Descriptions: SD = Strongly Disagree D = Disagree IB = In Between A = Agree SA = Strongly Agree

B) Results Spread

Choices	Count
SD(1)	4
D(2)	16
IB(3)	19
A(4)	49
SA(5)	16

Statistics

Total 369

Mean A(3.55)

Mode A

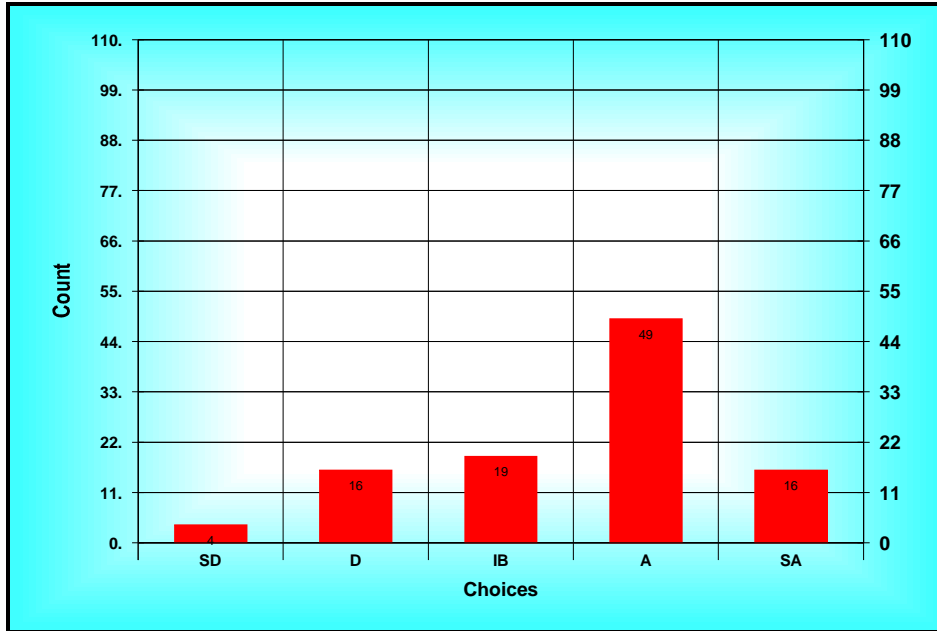
High SA

Low SD

STD 1.05

N 109

n 104



Results Chart (9. The expectations for performance as a department...)

10. The informal mentoring is effective.

A) Ballot

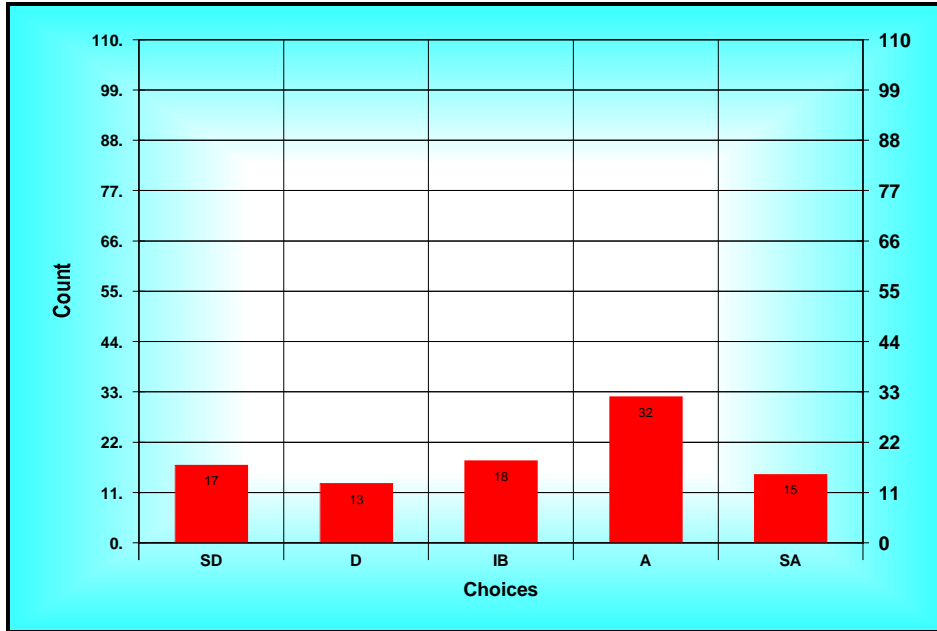
Method: Custom Method
 Options: Allow Bypass
 Descriptions: SD = Strongly Disagree D = Disagree IB = In Between A = Agree SA = Strongly Agree

B) Results Spread

Choices	Count
SD(1)	17
D(2)	13
IB(3)	18
A(4)	32
SA(5)	15

Statistics

Total 300
 Mean IB(3.16)
 Mode A
 High SA
 Low SD
 STD 1.35
 N 109
 n 95



Results Chart (10. The informal mentoring is effective.)

11. The criteria for tenure are clear.

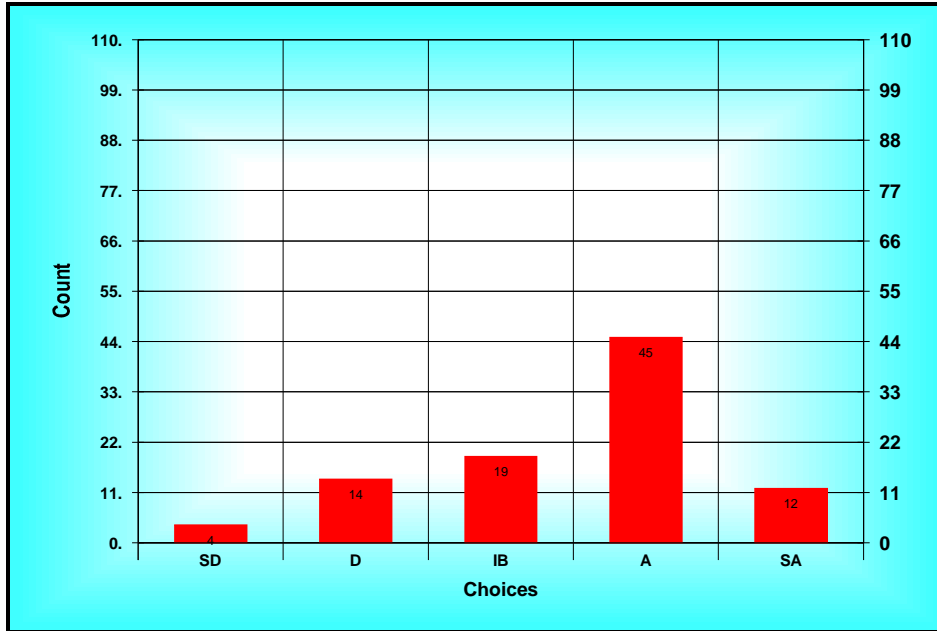
A) Ballot

Method: Custom Method
 Options: Allow Bypass
 Descriptions: SD = Strongly Disagree D = Disagree IB = In Between A = Agree SA = Strongly Agree

B) Results Spread

<i>Choices</i>	<i>Count</i>
<i>SD(1)</i>	<i>4</i>
<i>D(2)</i>	<i>14</i>
<i>IB(3)</i>	<i>19</i>
<i>A(4)</i>	<i>45</i>
<i>SA(5)</i>	<i>12</i>

Statistics
 Total 329
 Mean A(3.50)
 Mode A
 High SA
 Low SD
 STD 1.03
 N 109
 n 94



Results Chart (11. The criteria for tenure are clear.)

12. There are faculty similar to me in my department.

A) Ballot

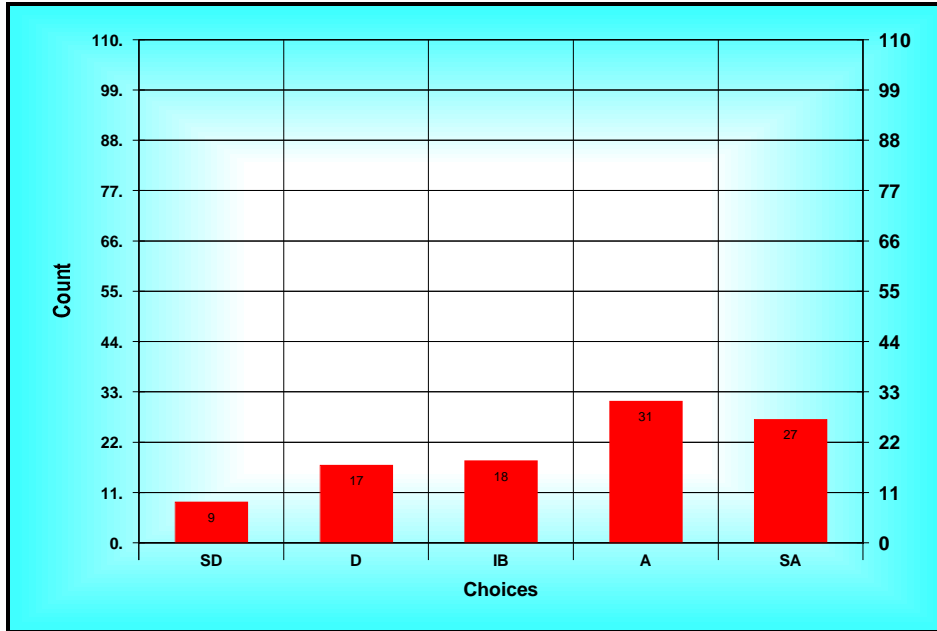
Method: Custom Method
 Options: Allow Bypass
 Descriptions: SD = Strongly Disagree D = Disagree IB = In Between A = Agree SA = Strongly Agree

B) Results Spread

Choices	Count
SD(1)	9
D(2)	17
IB(3)	18
A(4)	31
SA(5)	27

Statistics

Total 356
 Mean IB(3.49)
 Mode A
 High SA
 Low SD
 STD 1.29
 N 109
 n 102



Results Chart (12. There are faculty similar to me in my department.)

13. I am dissatisfied with the fairness of my immediate supervisor’s evaluation of my work.

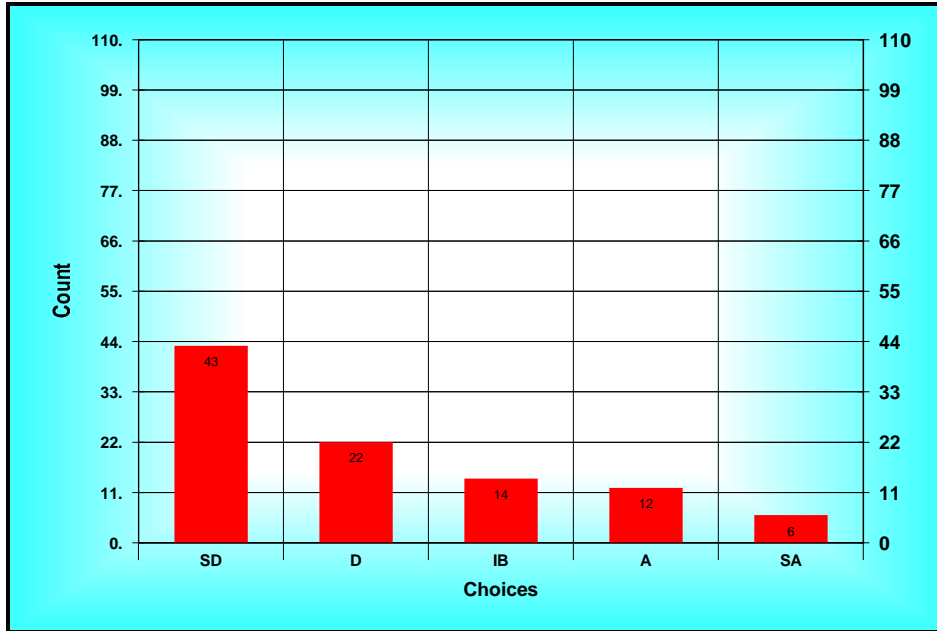
A) Ballot

Method: Custom Method
 Options: Allow Bypass
 Descriptions: SD = Strongly Disagree D = Disagree IB = In Between A = Agree SA = Strongly Agree

B) Results Spread

Choices	Count
SD(1)	43
D(2)	22
IB(3)	14
A(4)	12
SA(5)	6

Statistics
 Total 207
 Mean D(2.13)
 Mode SD
 High SA
 Low SD
 STD 1.28
 N 109
 n 97



Results Chart (13. I am dissatisfied with the fairness of my...)

14. I am dissatisfied with the quality of computer services.

A) Ballot

Method: Custom Method

Options: Allow Bypass

Descriptions: SD = Strongly Disagree D = Disagree IB = In Between A = Agree SA = Strongly Agree

B) Results Spread

<i>Choices</i>	<i>Count</i>
<i>SD(1)</i>	<i>14</i>
<i>D(2)</i>	<i>50</i>
<i>IB(3)</i>	<i>17</i>
<i>A(4)</i>	<i>15</i>
<i>SA(5)</i>	<i>9</i>

Statistics

Total 270

Mean IB(2.57)

Mode D

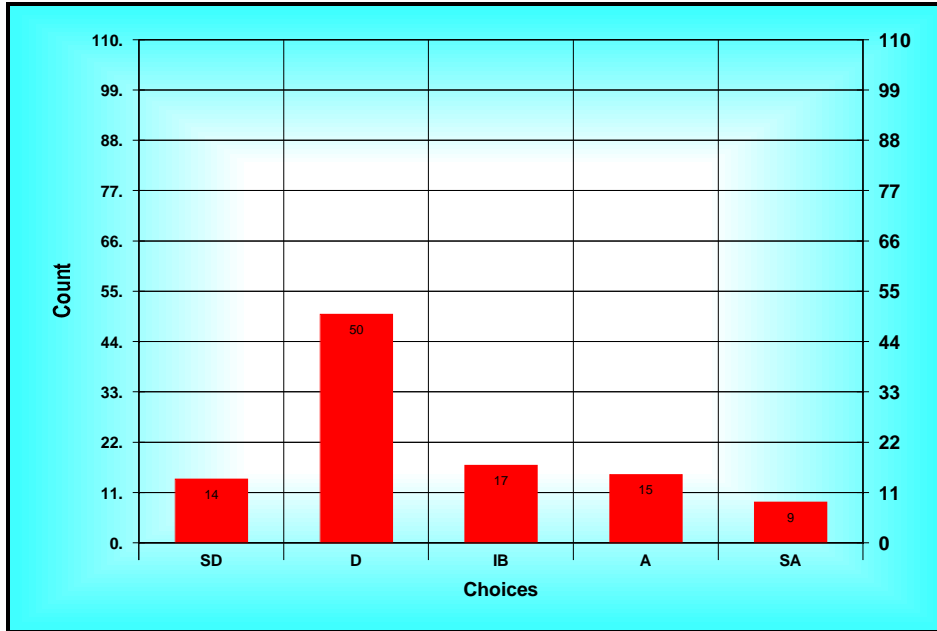
High SA

Low SD

STD 1.15

N 109

n 105



Results Chart (14. I am dissatisfied with the quality of computer...)

15. Communication between my chair and me is effective.

A) Ballot

Method: Custom Method

Options: Allow Bypass

Descriptions: SD = Strongly Disagree D = Disagree IB = In Between A = Agree SA = Strongly Agree

B) Results Spread

Choices	Count
SD(1)	6
D(2)	10
IB(3)	18
A(4)	37
SA(5)	34

Statistics

Total 398

Mean A(3.79)

Mode A

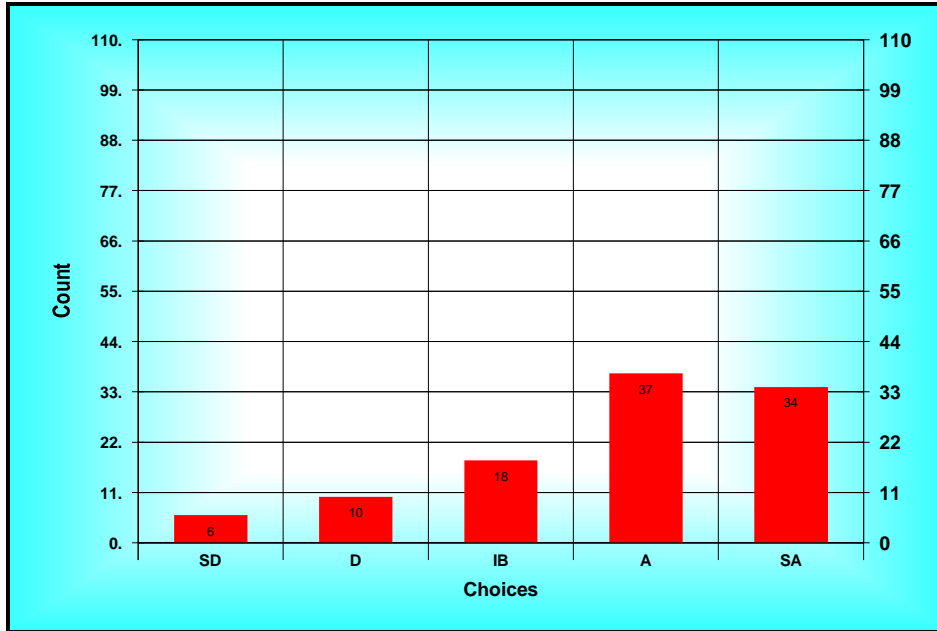
High SA

Low SD

STD 1.17

N 109

n 105



Results Chart (15. Communication between my chair and me is...)

16. NDSU is not a good place in which to work.

A) Ballot

Method: Custom Method

Options: Allow Bypass

Descriptions: SD = Strongly Disagree D = Disagree IB = In Between A = Agree SA = Strongly Agree

B) Results Spread

Choices	Count
SD(1)	36
D(2)	50
IB(3)	12
A(4)	1
SA(5)	6

Statistics

Total 206

Mean D(1.96)

Mode D

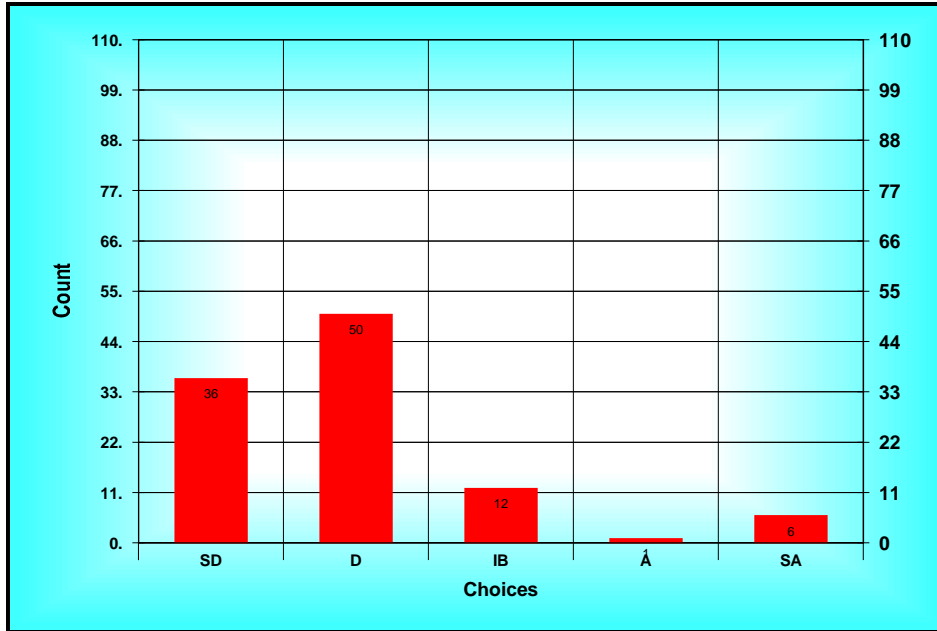
High SA

Low SD

STD 1.01

N 109

n 105



Results Chart (16. NDSU is not a good place in which to work.)

17. If I wanted to advance to a leadership role on campus, I could do so.

A) Ballot

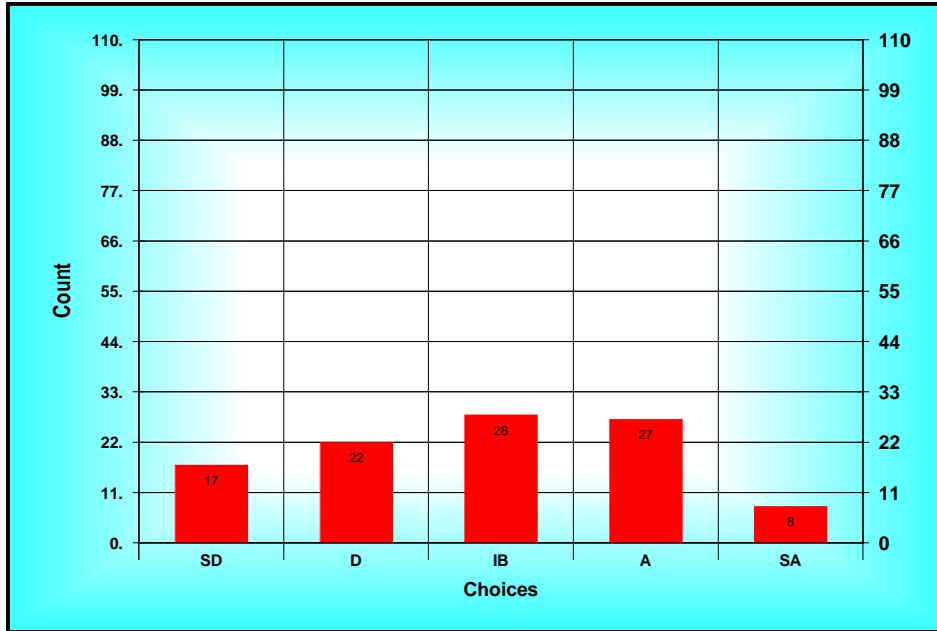
Method: Custom Method
 Options: Allow Bypass
 Descriptions: SD = Strongly Disagree D = Disagree IB = In Between A = Agree SA = Strongly Agree

B) Results Spread

Choices	Count
SD(1)	17
D(2)	22
IB(3)	28
A(4)	27
SA(5)	8

Statistics

Total 293
 Mean IB(2.87)
 Mode IB
 High SA
 Low SD
 STD 1.21
 N 109
 n 102



Results Chart (17. If I wanted to advance to a leadership role on...)

18. I do not feel a sense of unity and cohesion among the faculty in my department.

A) Ballot

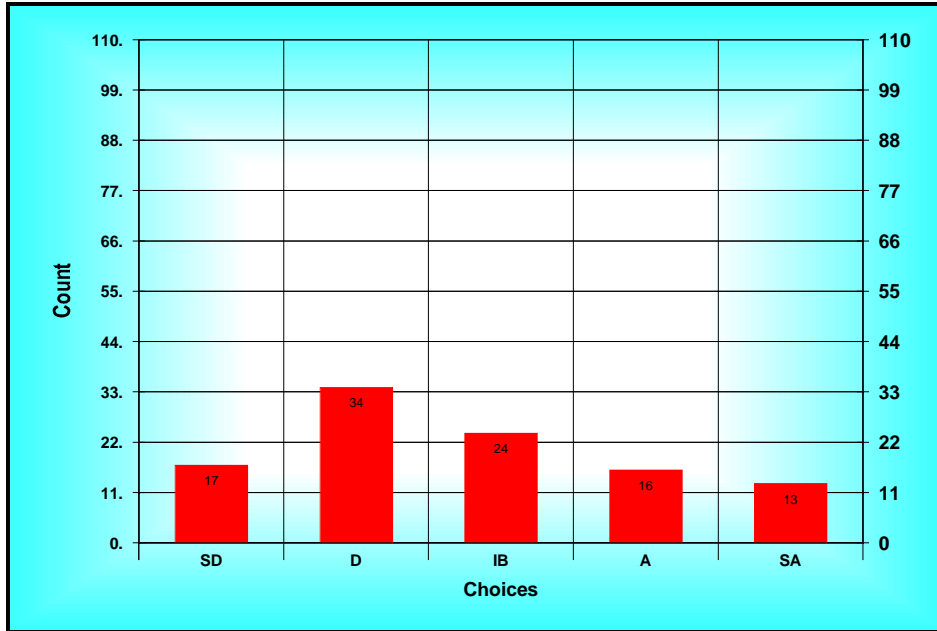
Method: Custom Method
 Options: Allow Bypass
 Descriptions: SD = Strongly Disagree D = Disagree IB = In Between A = Agree SA = Strongly Agree

B) Results Spread

<i>Choices</i>	<i>Count</i>
<i>SD(1)</i>	<i>17</i>
<i>D(2)</i>	<i>34</i>
<i>IB(3)</i>	<i>24</i>
<i>A(4)</i>	<i>16</i>
<i>SA(5)</i>	<i>13</i>

Statistics

Total 286
Mean IB(2.75)
Mode D
High SA
Low SD
STD 1.26
N 109
n 104



Results Chart (18. I do not feel a sense of unity and cohesion among...)

19. The formal mentoring program is effective.

A) Ballot

Method: Custom Method

Options: Allow Bypass

Descriptions: SD = Strongly Disagree D = Disagree IB = In Between A = Agree SA = Strongly Agree

B) Results Spread

<i>Choices</i>	<i>Count</i>
<i>SD(1)</i>	<i>17</i>
<i>D(2)</i>	<i>16</i>
<i>IB(3)</i>	<i>23</i>
<i>A(4)</i>	<i>23</i>
<i>SA(5)</i>	<i>6</i>

Statistics

Total 240

Mean IB(2.82)

Mode ??

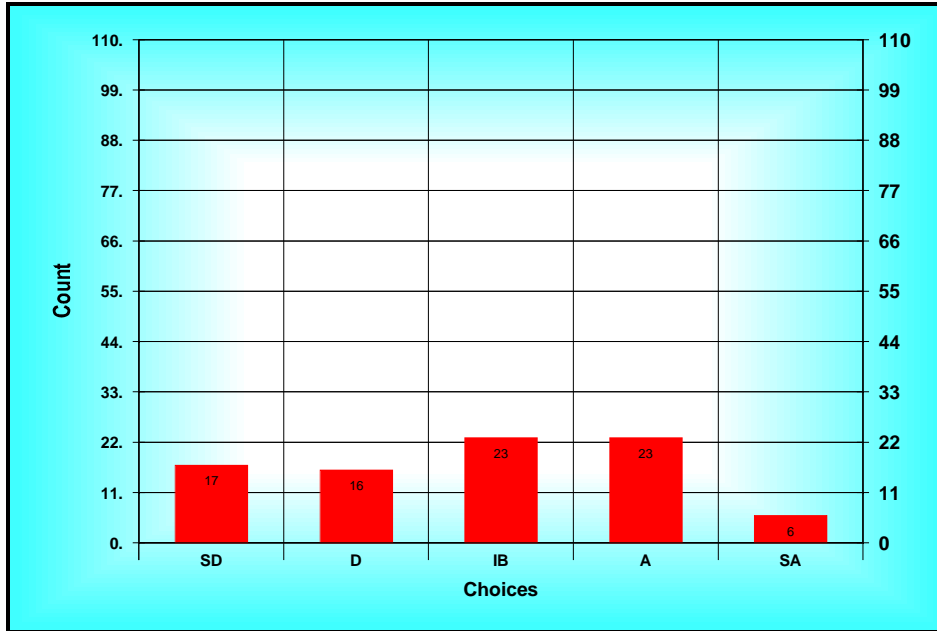
High SA

Low SD

STD 1.24

N 109

n 85



Results Chart (19. The formal mentoring program is effective.)

20. My department is a good place in which to work.

A) Ballot

Method: Custom Method

Options: Allow Bypass

Descriptions: SD = Strongly Disagree D = Disagree IB = In Between A = Agree SA = Strongly Agree

B) Results Spread

Choices	Count
SD(1)	4
D(2)	9
IB(3)	14
A(4)	47
SA(5)	31

Statistics

Total 407

Mean A(3.88)

Mode A

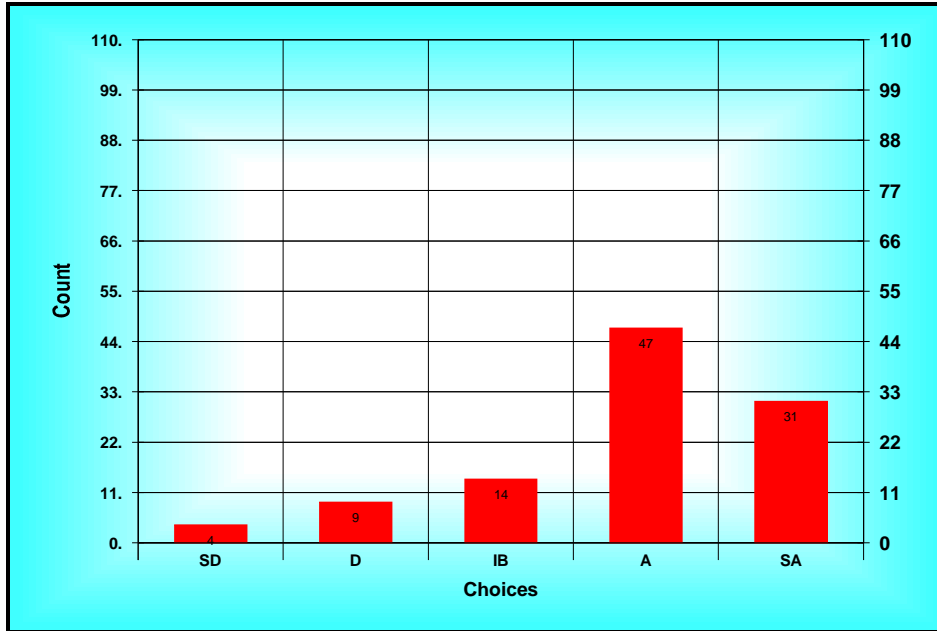
High SA

Low SD

STD 1.05

N 109

n 105



Results Chart (20. My department is a good place in which to work.)

21. I am satisfied with what is expected of me as a researcher.

A) Ballot

Method: Custom Method

Options: Allow Bypass

Descriptions: SD = Strongly Disagree D = Disagree IB = In Between A = Agree SA = Strongly Agree

B) Results Spread

Choices	Count
SD(1)	5
D(2)	12
IB(3)	18
A(4)	50
SA(5)	9

Statistics

Total 328

Mean IB(3.49)

Mode A

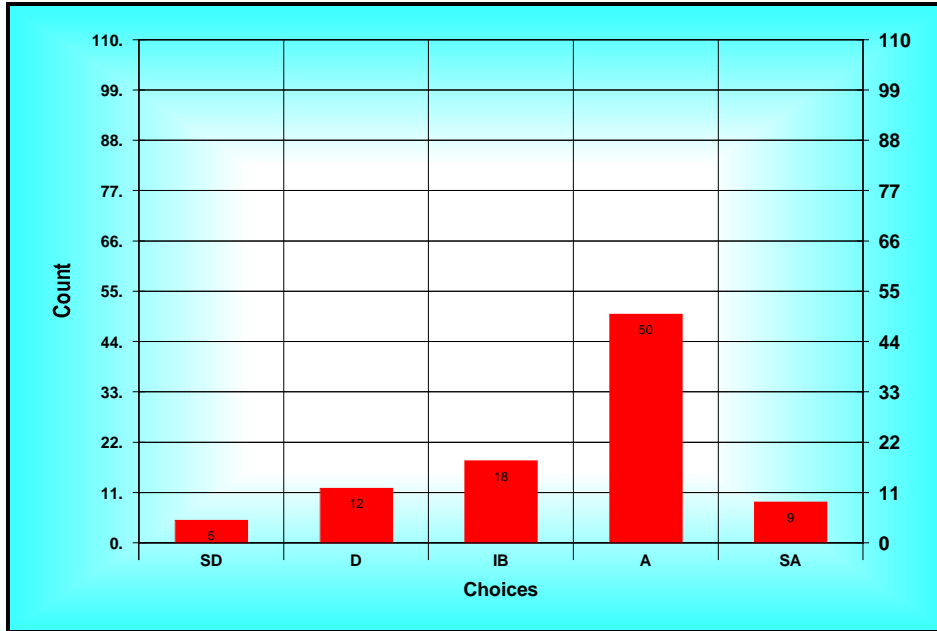
High SA

Low SD

STD 1.01

N 109

n 94



Results Chart (21. I am satisfied with what is expected of me as a...)

22. I feel a sense of unity and cohesion among the faculty in my College.

A) Ballot

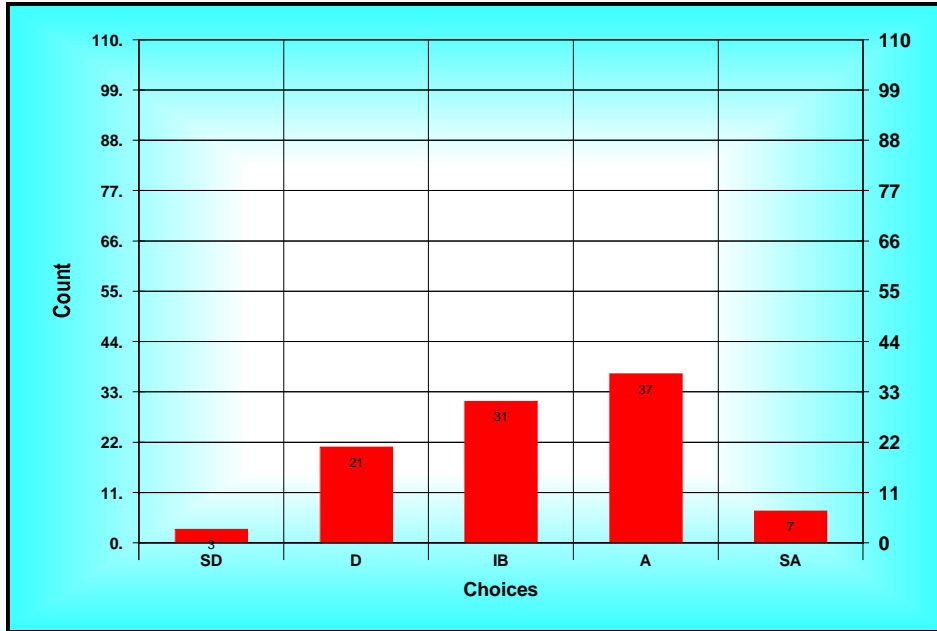
Method: Custom Method
 Options: Allow Bypass
 Descriptions: SD = Strongly Disagree D = Disagree IB = In Between A = Agree SA = Strongly Agree

B) Results Spread

Choices	Count
SD(1)	3
D(2)	21
IB(3)	31
A(4)	37
SA(5)	7

Statistics

Total 321
 Mean IB(3.24)
 Mode A
 High SA
 Low SD
 STD 0.97
 N 109
 n 99



Results Chart (22. I feel a sense of unity and cohesion among the...)

23. I am satisfied with the amount of time I have to conduct research.

A) Ballot

Method: Custom Method

Options: Allow Bypass

Descriptions: SD = Strongly Disagree D = Disagree IB = In Between A = Agree SA = Strongly Agree

B) Results Spread

Choices	Count
SD(1)	25
D(2)	31
IB(3)	14
A(4)	24
SA(5)	2

Statistics

Total 235

Mean D(2.45)

Mode D

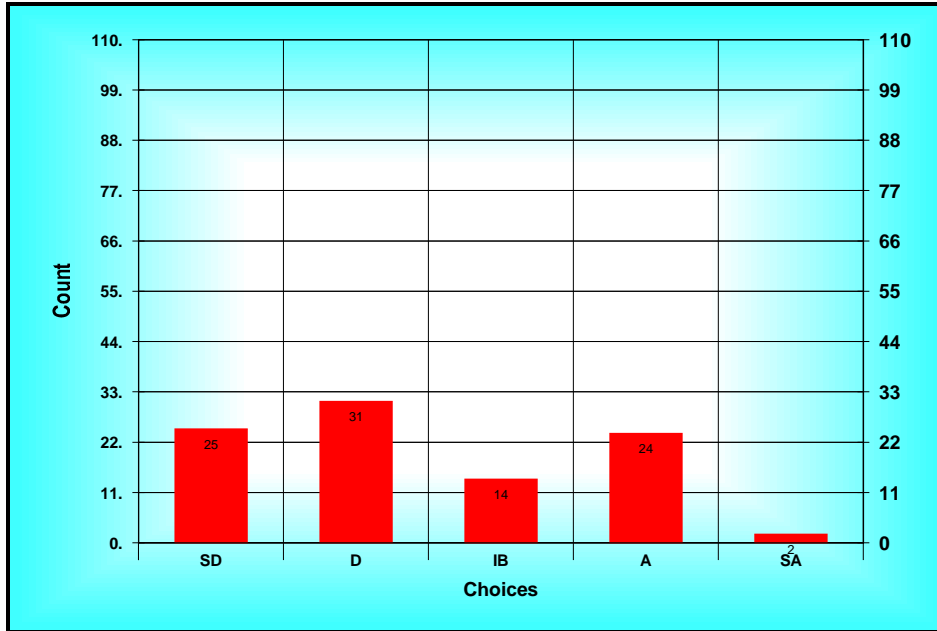
High SA

Low SD

STD 1.19

N 109

n 96



Results Chart (23. I am satisfied with the amount of time I have to...)

24. I am satisfied with the financial support (travel, equipment, etc) my department gives me.

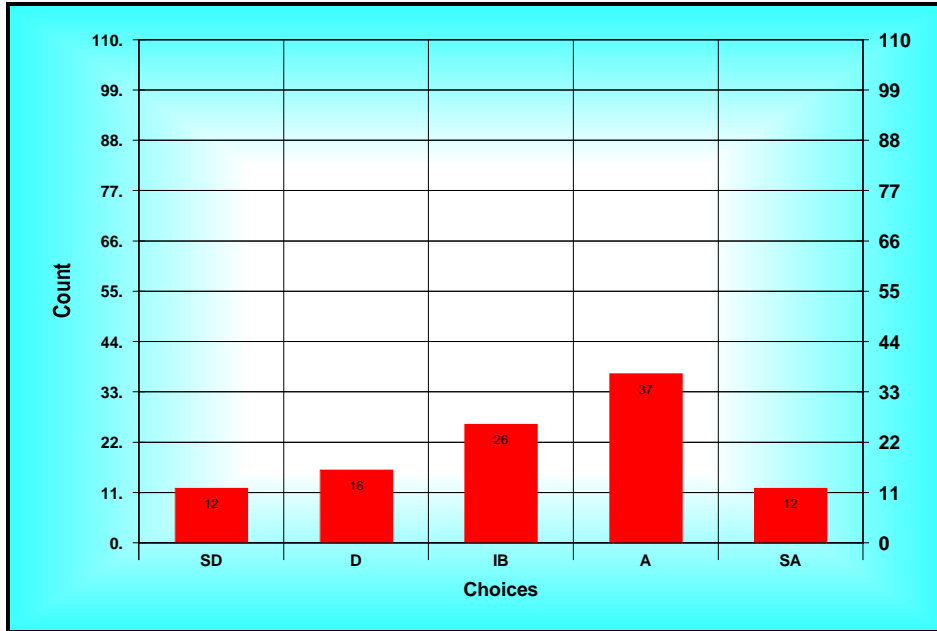
A) Ballot

Method: Custom Method
 Options: Allow Bypass
 Descriptions: SD = Strongly Disagree D = Disagree IB = In Between A = Agree SA = Strongly Agree

B) Results Spread

<i>Choices</i>	<i>Count</i>
<i>SD(1)</i>	<i>12</i>
<i>D(2)</i>	<i>16</i>
<i>IB(3)</i>	<i>26</i>
<i>A(4)</i>	<i>37</i>
<i>SA(5)</i>	<i>12</i>

Statistics
 Total 330
 Mean IB(3.20)
 Mode A
 High SA
 Low SD
 STD 1.19
 N 109
 n 103



Results Chart (24. I am satisfied with the financial support...)

25. Departmental (chair and colleagues) do what they can to make any family leave situation and the tenure-track compatible.

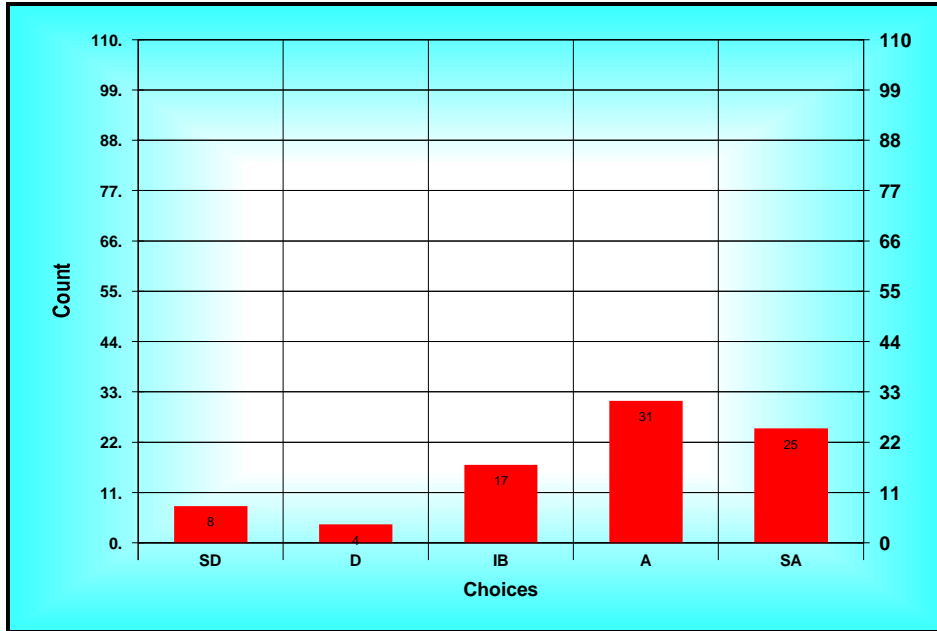
A) Ballot

Method: Custom Method
 Options: Allow Bypass
 Descriptions: SD = Strongly Disagree D = Disagree IB = In Between A = Agree SA = Strongly Agree

B) Results Spread

<i>Choices</i>	<i>Count</i>
<i>SD(1)</i>	<i>8</i>
<i>D(2)</i>	<i>4</i>
<i>IB(3)</i>	<i>17</i>
<i>A(4)</i>	<i>31</i>
<i>SA(5)</i>	<i>25</i>

Statistics
 Total 316
 Mean A(3.72)
 Mode A
 High SA
 Low SD
 STD 1.21
 N 109
 n 85



Results Chart (25. Departmental (chair and colleagues) do what they...)

26. I am dissatisfied with the balance I am able to strike between professional time and personal/family time.

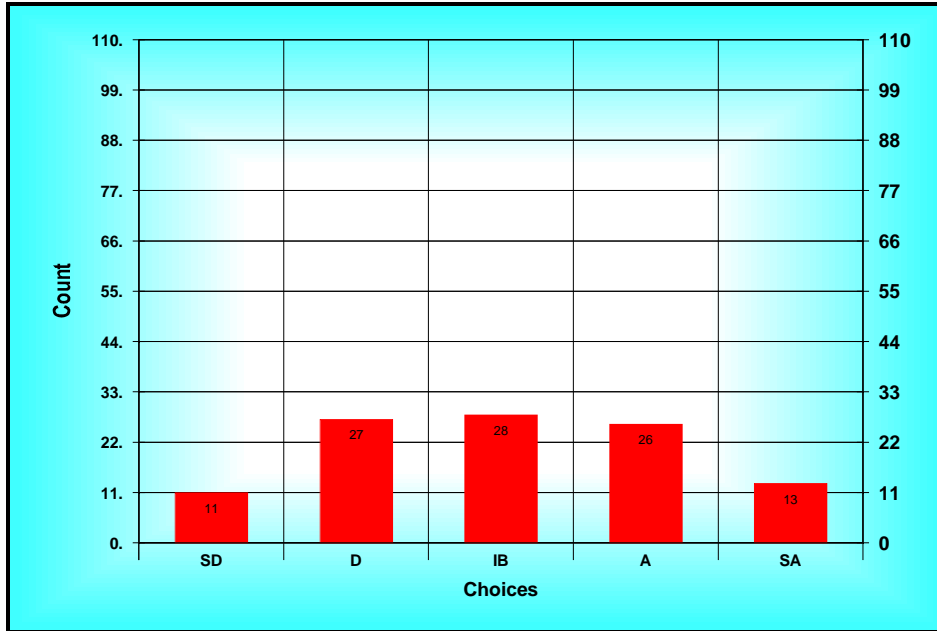
A) Ballot

Method: Custom Method
 Options: Allow Bypass
 Descriptions: SD = Strongly Disagree D = Disagree IB = In Between A = Agree SA = Strongly Agree

B) Results Spread

<i>Choices</i>	<i>Count</i>
<i>SD(1)</i>	<i>11</i>
<i>D(2)</i>	<i>27</i>
<i>IB(3)</i>	<i>28</i>
<i>A(4)</i>	<i>26</i>
<i>SA(5)</i>	<i>13</i>

Statistics
 Total 318
 Mean IB(3.03)
 Mode IB
 High SA
 Low SD
 STD 1.20
 N 109
 n 105



Results Chart (26. I am dissatisfied with the balance I am able to...)

27. There are faculty similar to me in my college.

A) Ballot

Method: Custom Method

Options: Allow Bypass

Descriptions: SD = Strongly Disagree D = Disagree IB = In Between A = Agree SA = Strongly Agree

B) Results Spread

Choices	Count
SD(1)	3
D(2)	20
IB(3)	23
A(4)	45
SA(5)	13

Statistics

Total 357

Mean IB(3.43)

Mode A

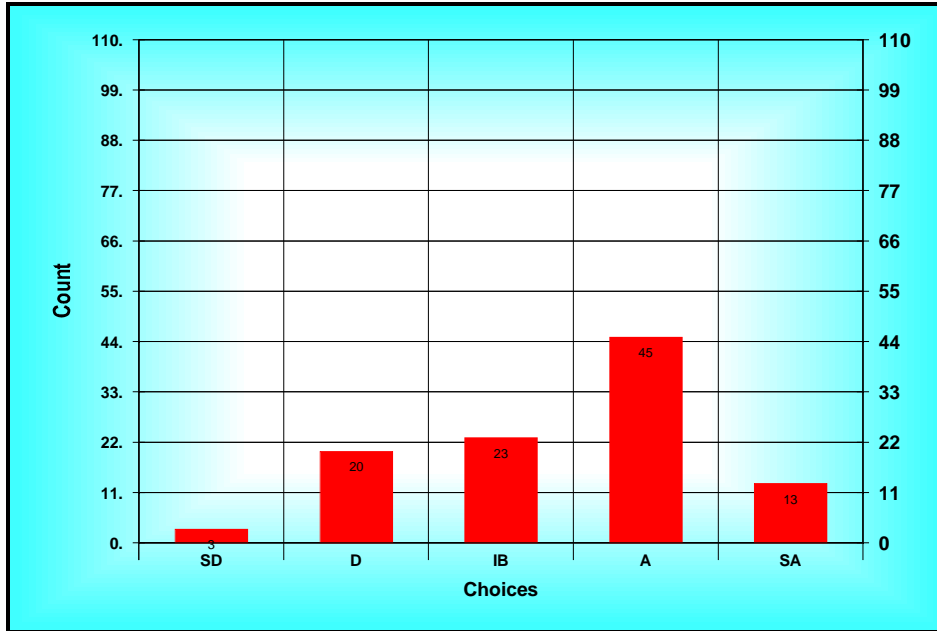
High SA

Low SD

STD 1.03

N 109

n 104



Results Chart (27. There are faculty similar to me in my college.)

28. I am satisfied with the professional/collegial support my department gives me.

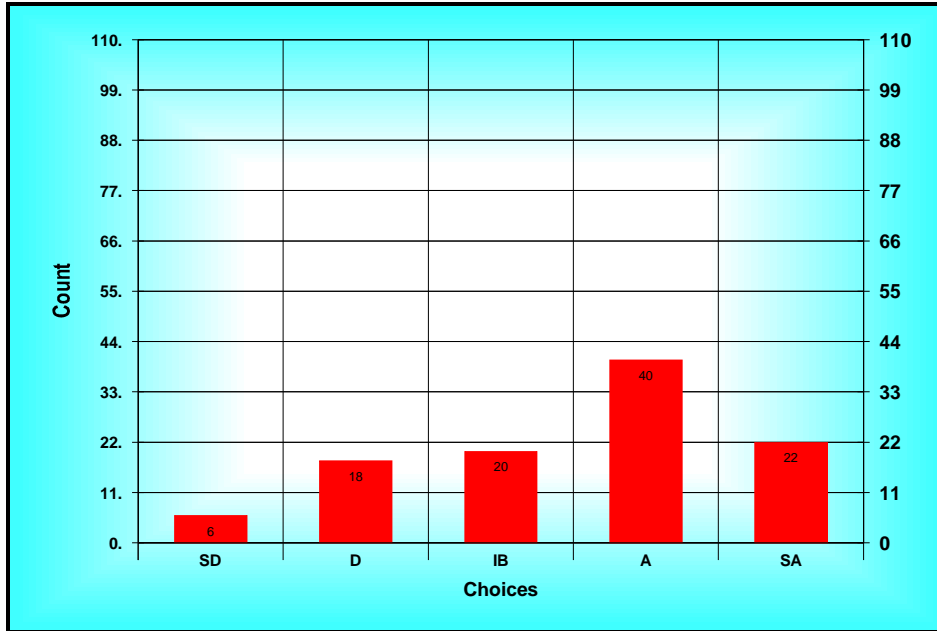
A) Ballot

Method: Custom Method
 Options: Allow Bypass
 Descriptions: SD = Strongly Disagree D = Disagree IB = In Between A = Agree SA = Strongly Agree

B) Results Spread

Choices	Count
SD(1)	6
D(2)	18
IB(3)	20
A(4)	40
SA(5)	22

Statistics
 Total 372
 Mean A(3.51)
 Mode A
 High SA
 Low SD
 STD 1.16
 N 109
 n 106



Results Chart (28. I am satisfied with the professional/collegial...)

29. I do not like the Fargo community.

A) Ballot

Method: Custom Method

Options: Allow Bypass

Descriptions: SD = Strongly Disagree D = Disagree IB = In Between A = Agree SA = Strongly Agree

B) Results Spread

<i>Choices</i>	<i>Count</i>
<i>SD(1)</i>	<i>51</i>
<i>D(2)</i>	<i>39</i>
<i>IB(3)</i>	<i>13</i>
<i>A(4)</i>	<i>2</i>
<i>SA(5)</i>	<i>4</i>

Statistics

Total 196

Mean D(1.80)

Mode SD

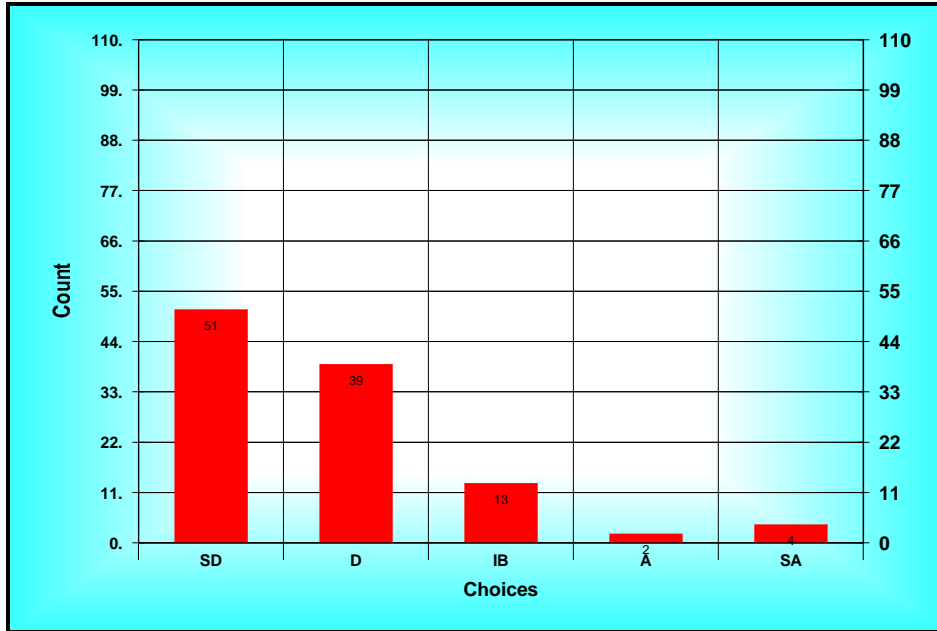
High SA

Low SD

STD 0.98

N 109

n 109



Results Chart (29. I do not like the Fargo community.)

30. There are sufficient opportunities to collaborate on research with other faculty at NDSU.

A) Ballot

Method: Custom Method

Options: Allow Bypass

Descriptions: SD = Strongly Disagree D = Disagree IB = In Between A = Agree SA = Strongly Agree

B) Results Spread

Choices	Count
SD(1)	8
D(2)	17
IB(3)	23
A(4)	46
SA(5)	8

Statistics

Total 335

Mean IB(3.28)

Mode A

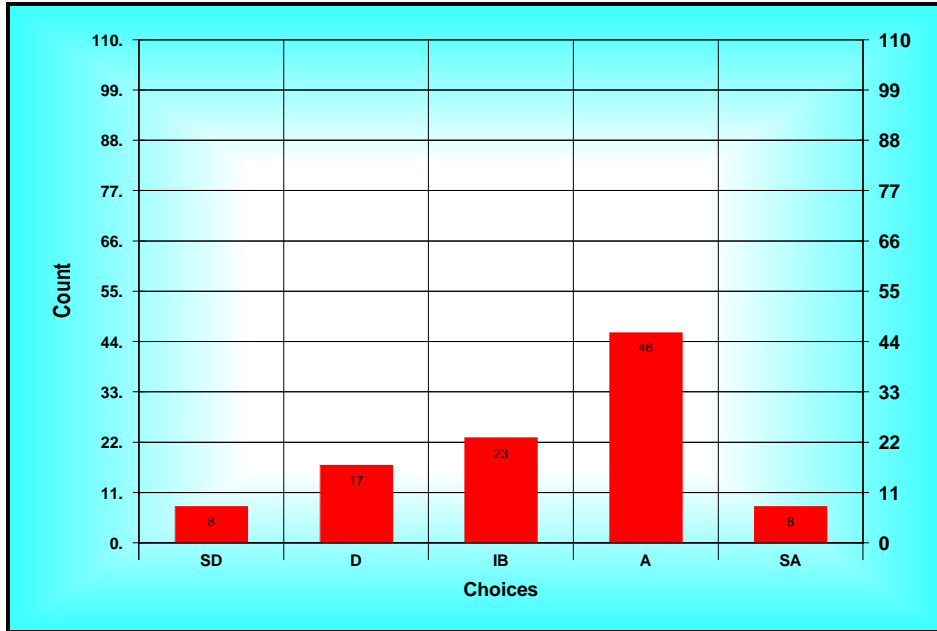
High SA

Low SD

STD 1.08

N 109

n 102



Results Chart (30. There are sufficient opportunities to collaborate...)

31. I am satisfied with my salary at NDSU.

A) Ballot

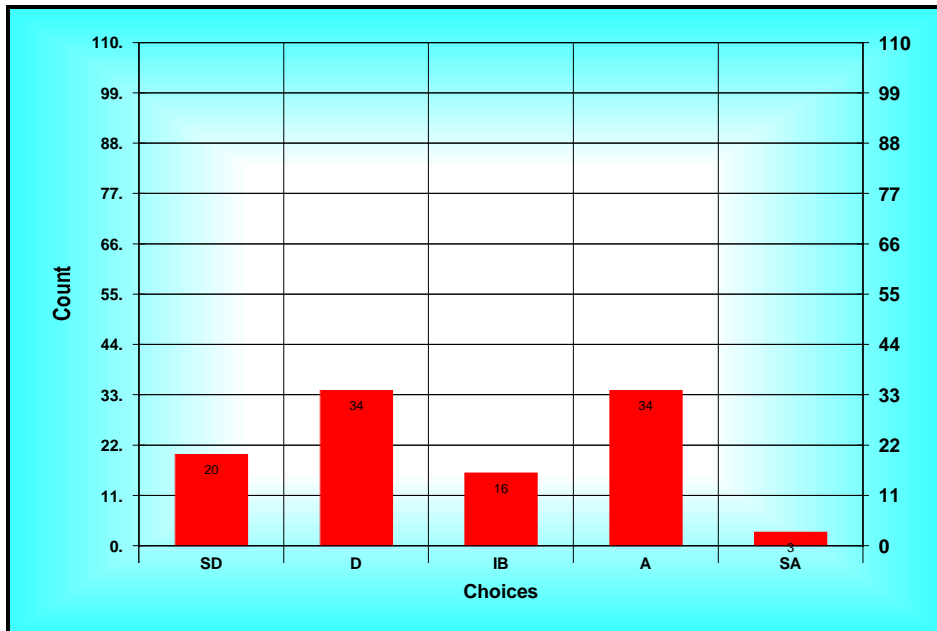
Method: Custom Method
 Options: Allow Bypass
 Descriptions: SD = Strongly Disagree D = Disagree IB = In Between A = Agree SA = Strongly Agree

B) Results Spread

<i>Choices</i>	<i>Count</i>
<i>SD(1)</i>	<i>20</i>
<i>D(2)</i>	<i>34</i>
<i>IB(3)</i>	<i>16</i>
<i>A(4)</i>	<i>34</i>
<i>SA(5)</i>	<i>3</i>

Statistics

Total 287
Mean IB(2.68)
Mode ??
High SA
Low SD
STD 1.19
N 109
n 107



Results Chart (31. I am satisfied with my salary at NDSU.)

32. I am satisfied with the quality of NDSU’s graduate students.

A) Ballot

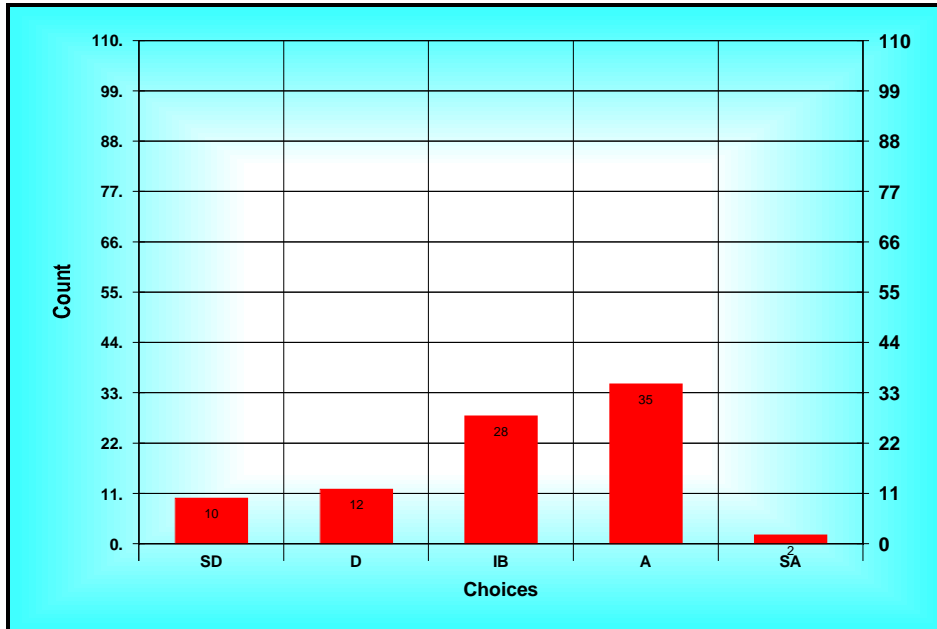
Method: Custom Method
 Options: Allow Bypass
 Descriptions: SD = Strongly Disagree D = Disagree IB = In Between A = Agree SA = Strongly Agree

B) Results Spread

<i>Choices</i>	<i>Count</i>
<i>SD(1)</i>	<i>10</i>
<i>D(2)</i>	<i>12</i>
<i>IB(3)</i>	<i>28</i>
<i>A(4)</i>	<i>35</i>
<i>SA(5)</i>	<i>2</i>

Statistics

Total 268
Mean IB(3.08)
Mode A
High SA
Low SD
STD 1.05
N 109
n 87



Results Chart (32. I am satisfied with the quality of NDSU’s...)

33. I am satisfied with the quality of NDSU’s undergraduate students.

A) Ballot

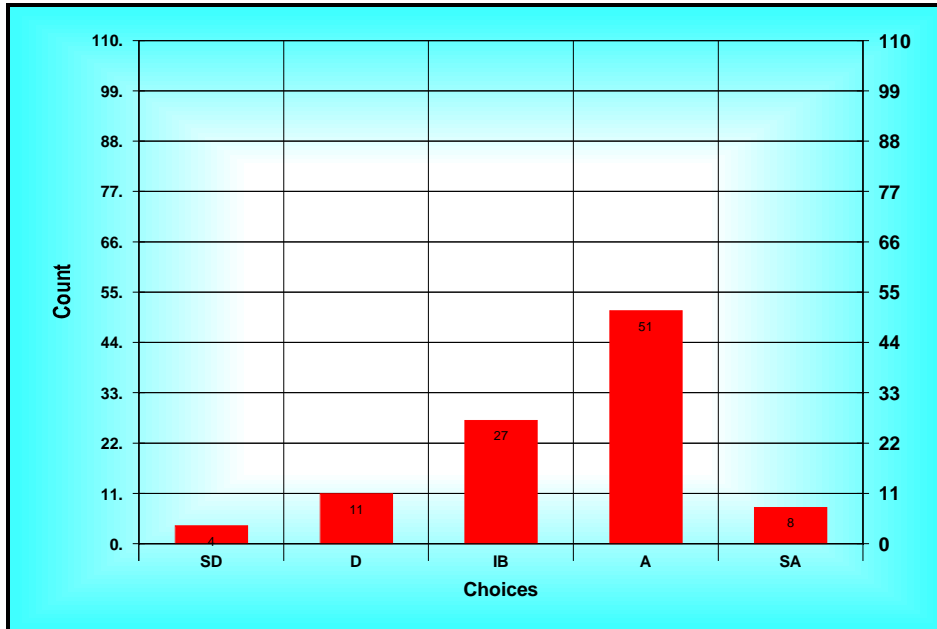
Method: Custom Method
 Options: Allow Bypass
 Descriptions: SD = Strongly Disagree D = Disagree IB = In Between A = Agree SA = Strongly Agree

B) Results Spread

<i>Choices</i>	<i>Count</i>
<i>SD(1)</i>	<i>4</i>
<i>D(2)</i>	<i>11</i>
<i>IB(3)</i>	<i>27</i>
<i>A(4)</i>	<i>51</i>
<i>SA(5)</i>	<i>8</i>

Statistics

Total 351
Mean IB(3.48)
Mode A
High SA
Low SD
STD 0.93
N 109
n 101



Results Chart (33. I am satisfied with the quality of NDSU’s...)

34. I am satisfied with the quality of NDSU’s library support and services.

A) Ballot

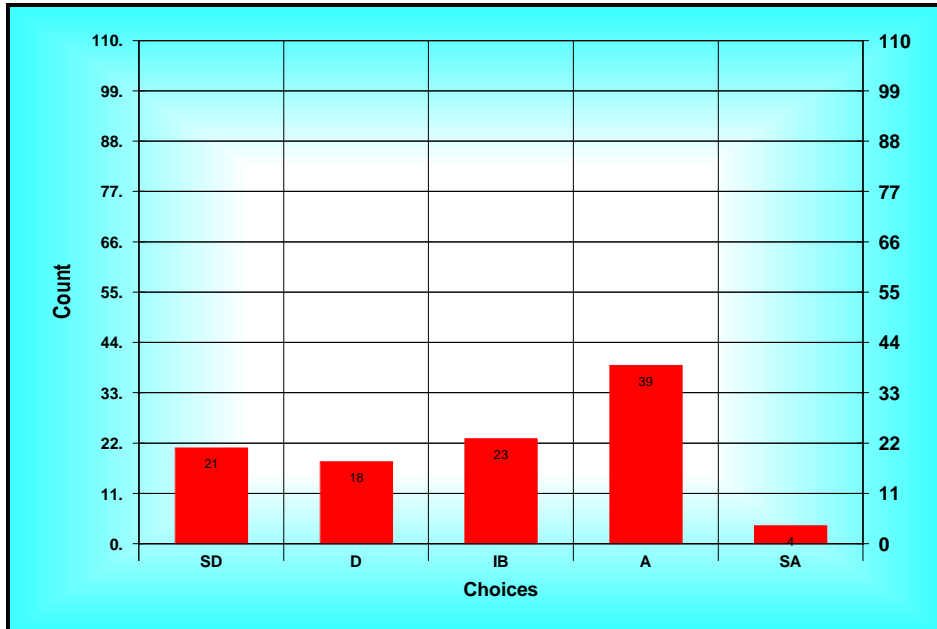
Method: Custom Method
 Options: Allow Bypass
 Descriptions: SD = Strongly Disagree D = Disagree IB = In Between A = Agree SA = Strongly Agree

B) Results Spread

<i>Choices</i>	<i>Count</i>
<i>SD(1)</i>	<i>21</i>
<i>D(2)</i>	<i>18</i>
<i>IB(3)</i>	<i>23</i>
<i>A(4)</i>	<i>39</i>
<i>SA(5)</i>	<i>4</i>

Statistics

Total 302
Mean IB(2.88)
Mode A
High SA
Low SD
STD 1.22
N 109
n 105



Results Chart (34. I am satisfied with the quality of NDSU’s ...)

35. My job at NDSU is stressful due to the difficulty in balancing work and family.

A) Ballot

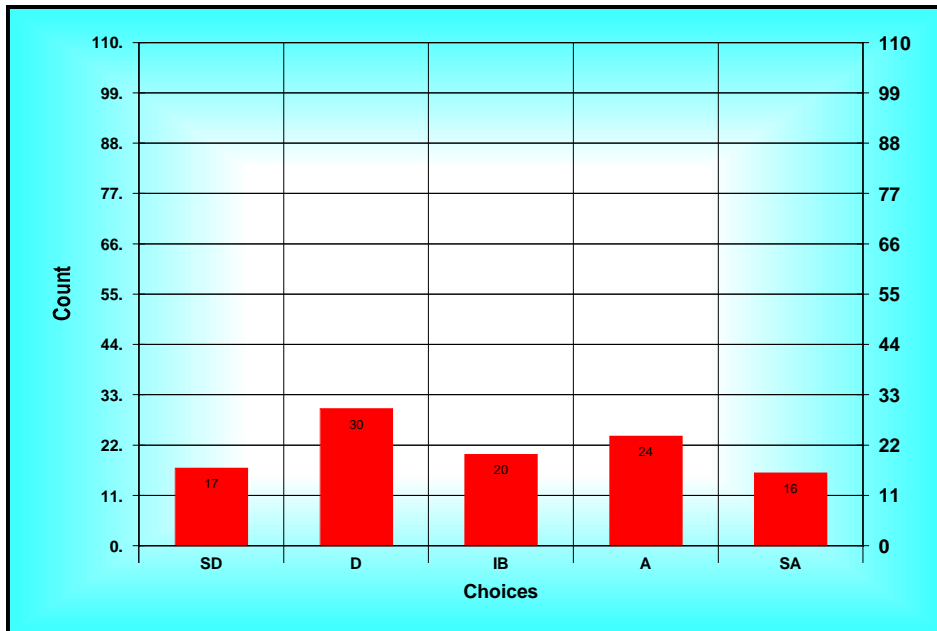
Method: Custom Method
 Options: Allow Bypass
 Descriptions: SD = Strongly Disagree D = Disagree IB = In Between A = Agree SA = Strongly Agree

B) Results Spread

<i>Choices</i>	<i>Count</i>
<i>SD(1)</i>	<i>17</i>
<i>D(2)</i>	<i>30</i>
<i>IB(3)</i>	<i>20</i>
<i>A(4)</i>	<i>24</i>
<i>SA(5)</i>	<i>16</i>

Statistics

Total 313
Mean IB(2.93)
Mode D
High SA
Low SD
STD 1.32
N 109
n 107



Results Chart (35. My job at NDSU is stressful due to the difficulty...)