

For current faculty (Survey)

Survey Results

1 filter(s) defined

Total Number of Respondents (N): 126 of 237

Filter- Male

1. Sex:

A) Ballot

Method: Multiple Selection
Options: Allow Bypass
Maximum Selections: [1]
Descriptions: Please choose one
Number of Choices: 2

B) Results Spread

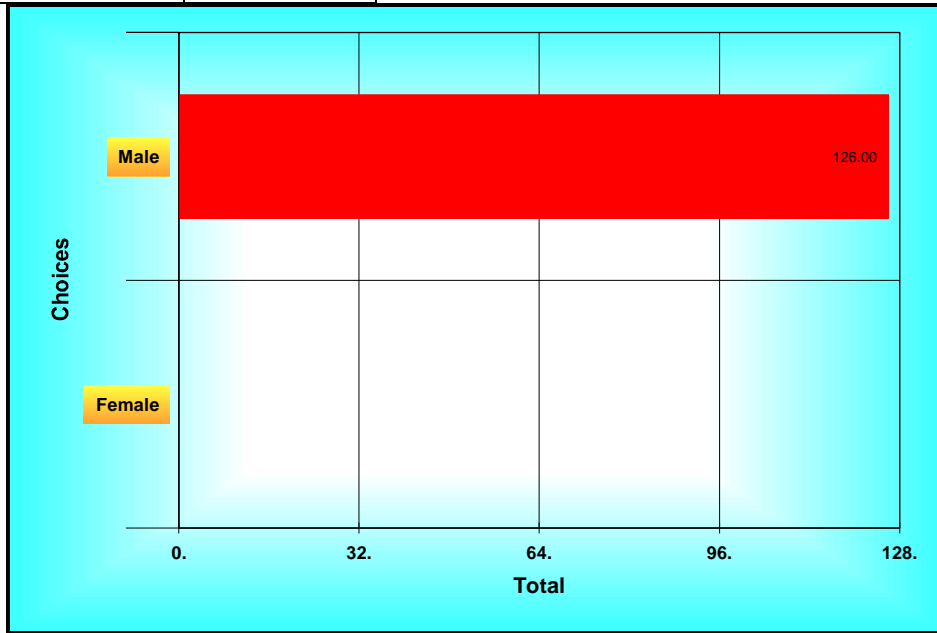
Statistics

Total 1.00

N 126

Table Sorted By Total

Choices	Total
Male	126
Female	0



Results Chart (1. Sex:)

2. Rank at NDSU:

A) Ballot

Method: Multiple Selection
 Options: Allow Bypass
 Enter Text for Last Choice
 Maximum Selections: [1]
 Descriptions: Please choose one
 Number of Choices: 4

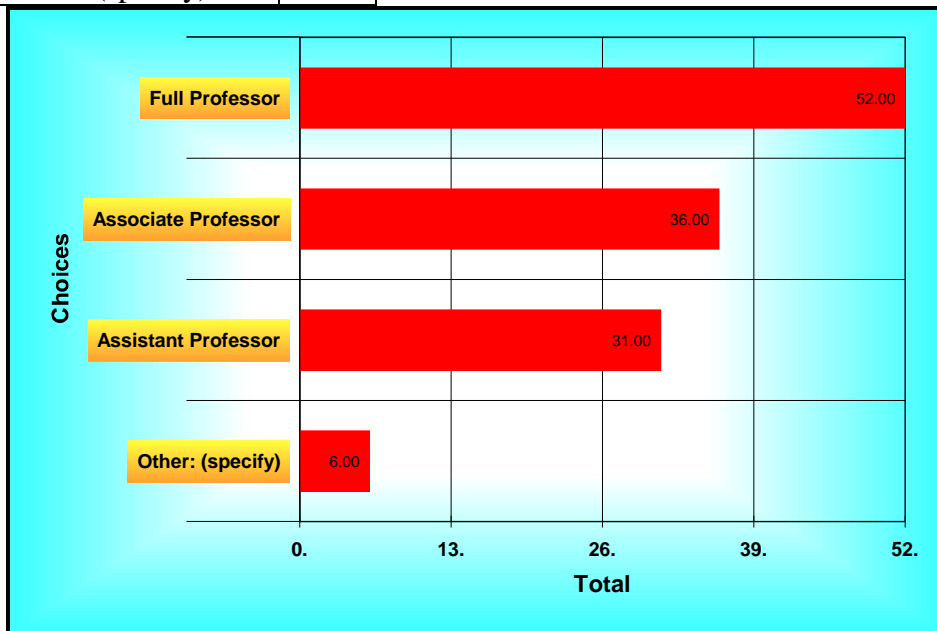
B) Results Spread

Statistics
 Total 4.00
 N 126
 Table Sorted By Total

C) Text Responses

1. You need to ask not only concerns within Departments but also concerns about NDSU higher administration, their performance, and the need of being evaluated for what they do and how do they perform the same way a faculty is evaluated
2. lecturer
3. research professor
4. Sr. Lecturer
5. Extension Specialist - not tenure track
6. non-tenure track

Choices	Total
Full Professor	52
Associate Professor	36
Assistant Professor	31
Other: (specify)	6



Results Chart (2. Rank at NDSU:)

3. Number of years at that rank:

A) Ballot

Method: Multiple Selection
 Options: Allow Bypass
 Maximum Selections: [1]
 Descriptions: Please choose one
 Number of Choices: 7

B) Results Spread

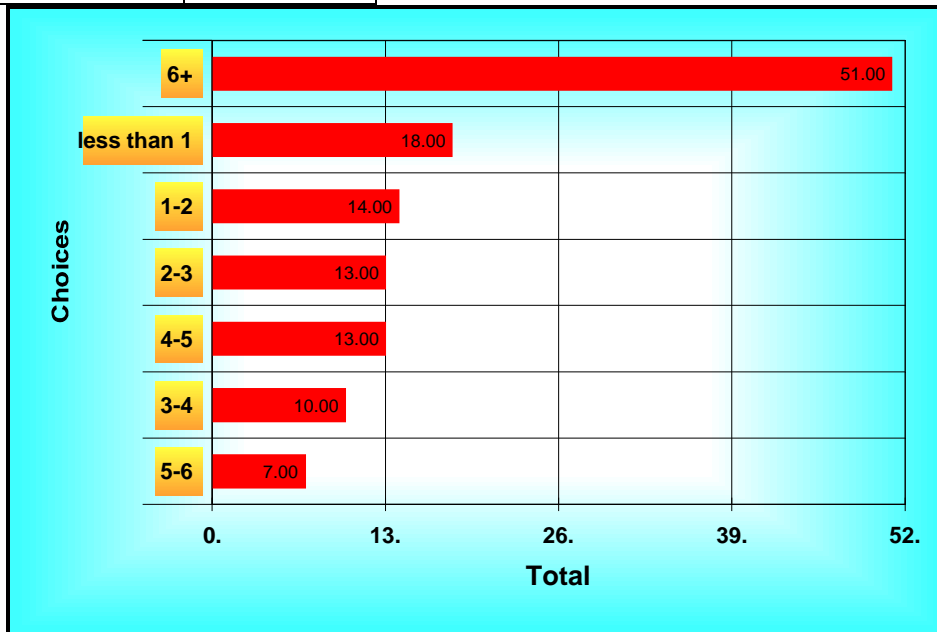
Statistics

Total 7.00

N 126

Table Sorted By Total

Choices	Total
6+	51
less than 1	18
1-2	14
2-3	13
4-5	13
3-4	10
5-6	7



Results Chart (3. Number of years at that rank:)

4. In what area is your appointment?

A) Ballot

Method: Multiple Selection
 Options: Allow Bypass
 Maximum Selections: [1]
 Descriptions: Please choose one
 Number of Choices: 2

B) Results Spread

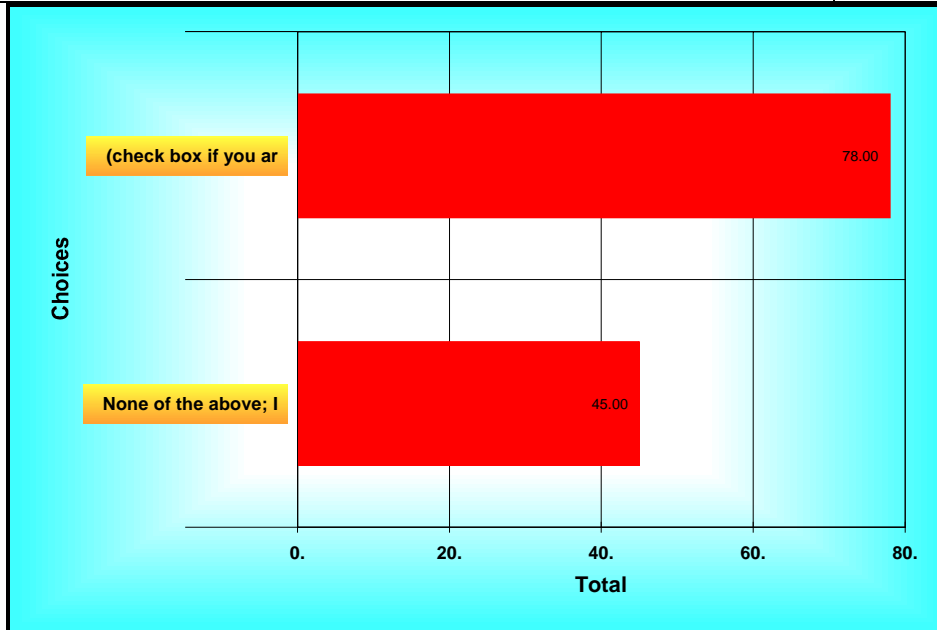
Statistics

Total 2.00

N 126

Table Sorted By Total

Choices	Total
(check box if you are in a Science, Math, Engineer	78
None of the above; I was not in Science, Math, Eng	45



Results Chart (4. In what area is your appointment?)

5. Current relationship status:

A) Ballot

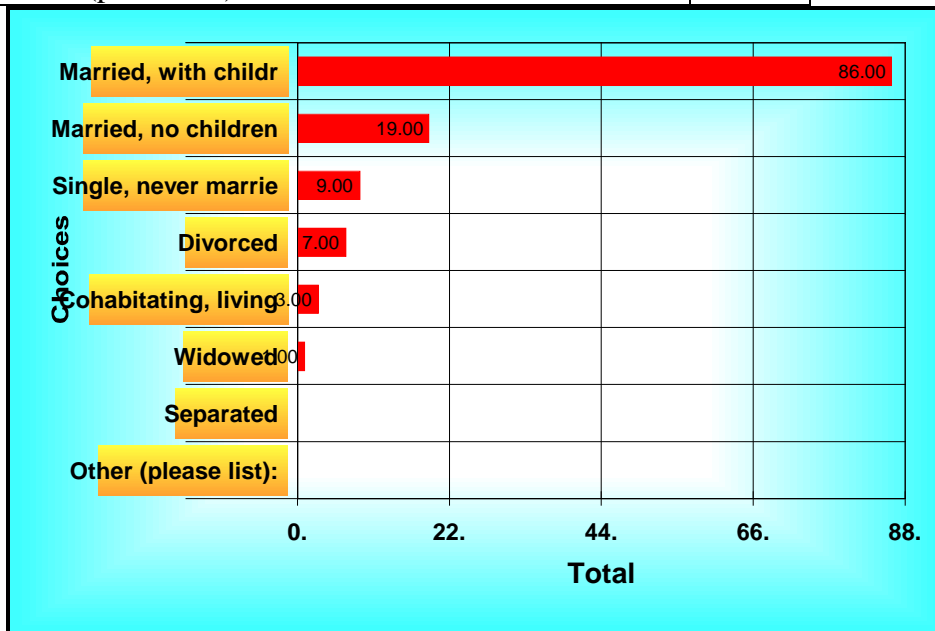
Method: Multiple Selection
 Options: Allow Bypass
 Enter Text for Last Choice
 Maximum Selections: [1]
 Descriptions: Please choose one
 Number of Choices: 8

B) Results Spread

Statistics
 Total 6.00
 N 126
 Table Sorted By Total

C) Text Responses

Choices	Total
Married, with children	86
Married, no children	19
Single, never married	9
Divorced	7
Cohabiting, living with your partner in an intim	3
Widowed	1
Separated	0
Other (please list):	0



Results Chart (5. Current relationship status:)

6. The tenure process is clear.

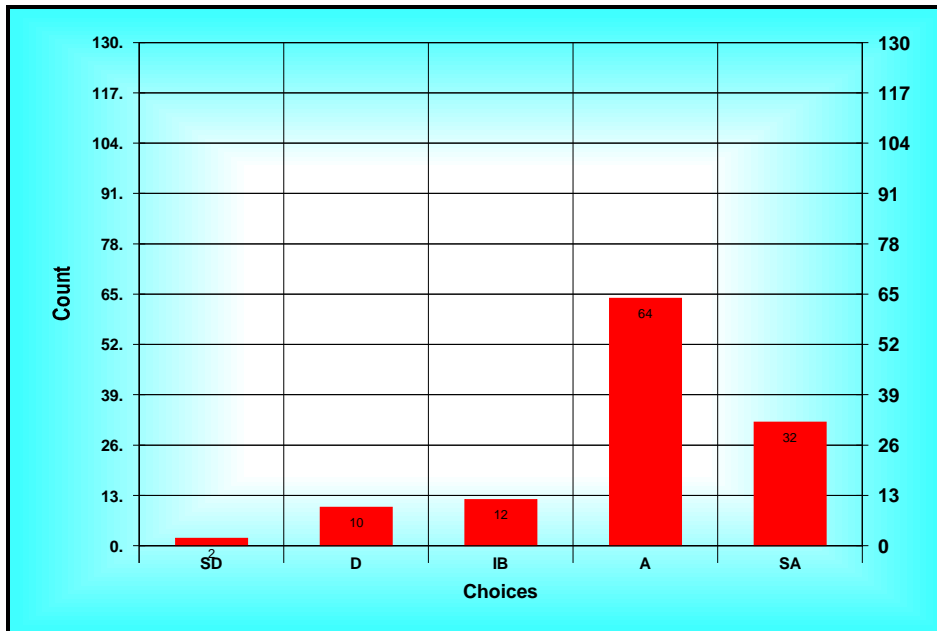
A) Ballot

Method: Custom Method
 Options: Allow Bypass
 Descriptions: SD = Strongly Disagree D = Disagree IB = In Between A = Agree SA = Strongly Agree

B) Results Spread

<i>Choices</i>	<i>Count</i>
<i>SD(1)</i>	<i>2</i>
<i>D(2)</i>	<i>10</i>
<i>IB(3)</i>	<i>12</i>
<i>A(4)</i>	<i>64</i>
<i>SA(5)</i>	<i>32</i>

Statistics
 Total 474
 Mean A(3.95)
 Mode A
 High SA
 Low SD
 STD 0.92
 N 126
 n 120



Results Chart (6. The tenure process is clear.)

7. I am satisfied with the number of courses I taught.

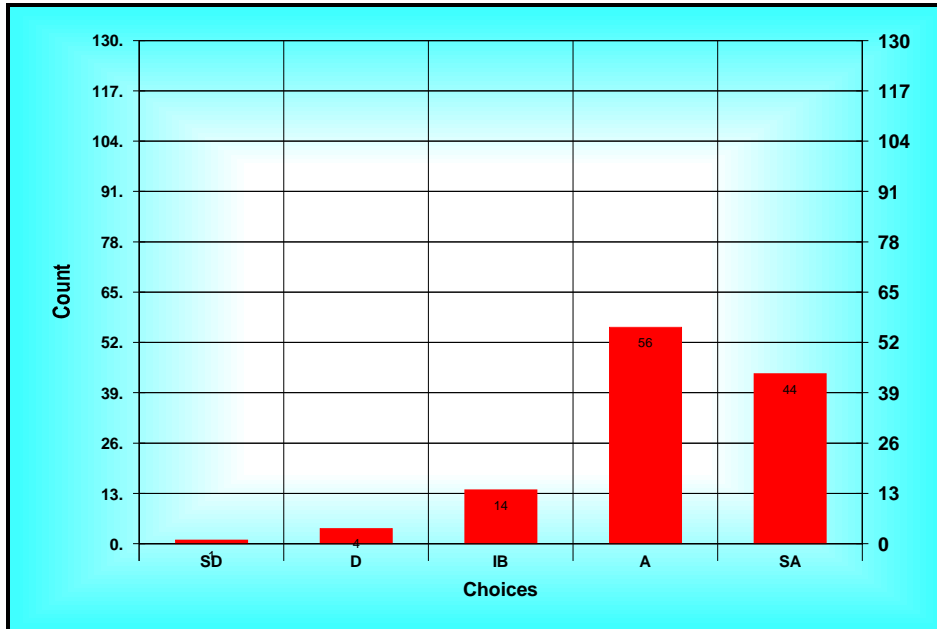
A) Ballot

Method: Custom Method
 Options: Allow Bypass
 Descriptions: SD = Strongly Disagree D = Disagree IB = In Between A = Agree SA = Strongly Agree

B) Results Spread

<i>Choices</i>	<i>Count</i>
<i>SD(1)</i>	<i>1</i>
<i>D(2)</i>	<i>4</i>
<i>IB(3)</i>	<i>14</i>
<i>A(4)</i>	<i>56</i>
<i>SA(5)</i>	<i>44</i>

Statistics
 Total 495
 Mean A(4.16)
 Mode A
 High SA
 Low SD
 STD 0.82
 N 126
 n 119



Results Chart (7. I am satisfied with the number of courses I...)

8. Communication within my department is not effective.

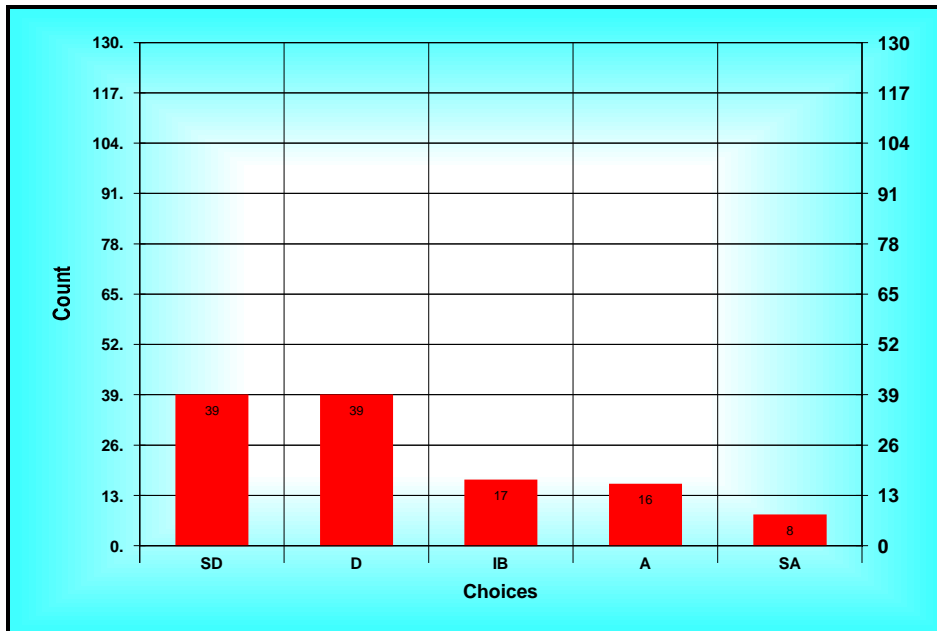
A) Ballot

Method: Custom Method
 Options: Allow Bypass
 Descriptions: SD = Strongly Disagree D = Disagree IB = In Between A = Agree SA = Strongly Agree

B) Results Spread

<i>Choices</i>	<i>Count</i>
<i>SD(1)</i>	<i>39</i>
<i>D(2)</i>	<i>39</i>
<i>IB(3)</i>	<i>17</i>
<i>A(4)</i>	<i>16</i>
<i>SA(5)</i>	<i>8</i>

Statistics
 Total 272
 Mean D(2.29)
 Mode ??
 High SA
 Low SD
 STD 1.24
 N 126
 n 119



Results Chart (8. Communication within my department is not...)

9. The expectations for performance as a department colleague are clear.

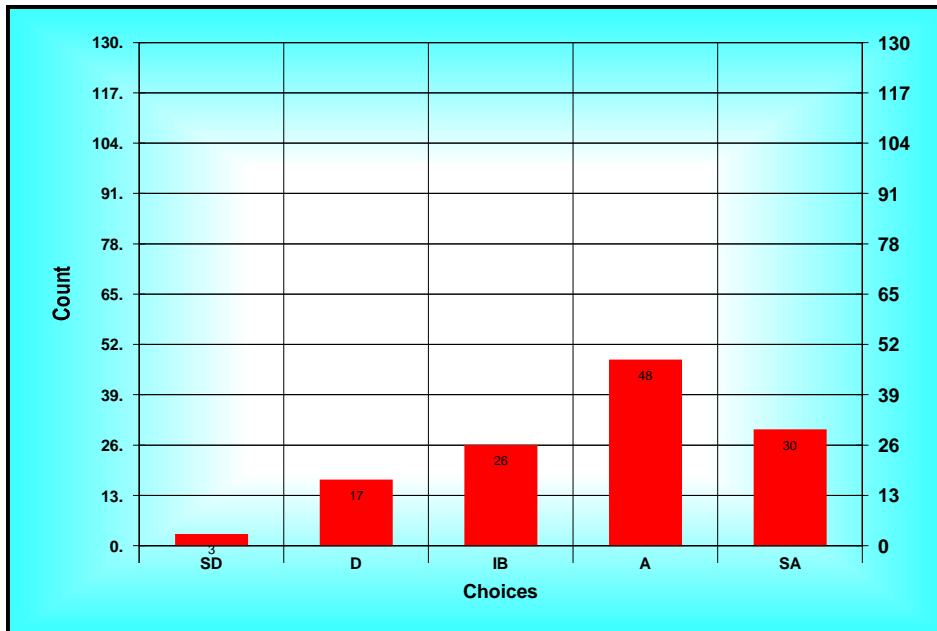
A) Ballot

Method: Custom Method
 Options: Allow Bypass
 Descriptions: SD = Strongly Disagree D = Disagree IB = In Between A = Agree SA = Strongly Agree

B) Results Spread

<i>Choices</i>	<i>Count</i>
<i>SD(1)</i>	<i>3</i>
<i>D(2)</i>	<i>17</i>
<i>IB(3)</i>	<i>26</i>
<i>A(4)</i>	<i>48</i>
<i>SA(5)</i>	<i>30</i>

Statistics
 Total 457
 Mean A(3.69)
 Mode A
 High SA
 Low SD
 STD 1.06
 N 126
 n 124



Results Chart (9. The expectations for performance as a department...)

10. The informal mentoring is effective.

A) Ballot

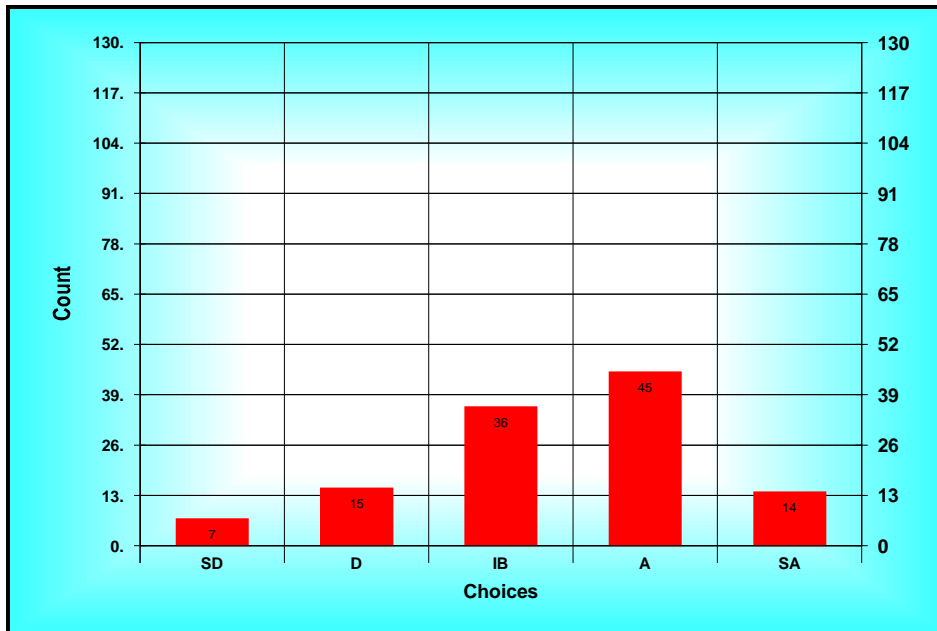
Method: Custom Method
 Options: Allow Bypass
 Descriptions: SD = Strongly Disagree D = Disagree IB = In Between A = Agree SA = Strongly Agree

B) Results Spread

<i>Choices</i>	<i>Count</i>
<i>SD(1)</i>	<i>7</i>
<i>D(2)</i>	<i>15</i>
<i>IB(3)</i>	<i>36</i>
<i>A(4)</i>	<i>45</i>
<i>SA(5)</i>	<i>14</i>

Statistics

Total 395
Mean IB(3.38)
Mode A
High SA
Low SD
STD 1.05
N 126
n 117



Results Chart (10. The informal mentoring is effective.)

11. The criteria for tenure are clear.

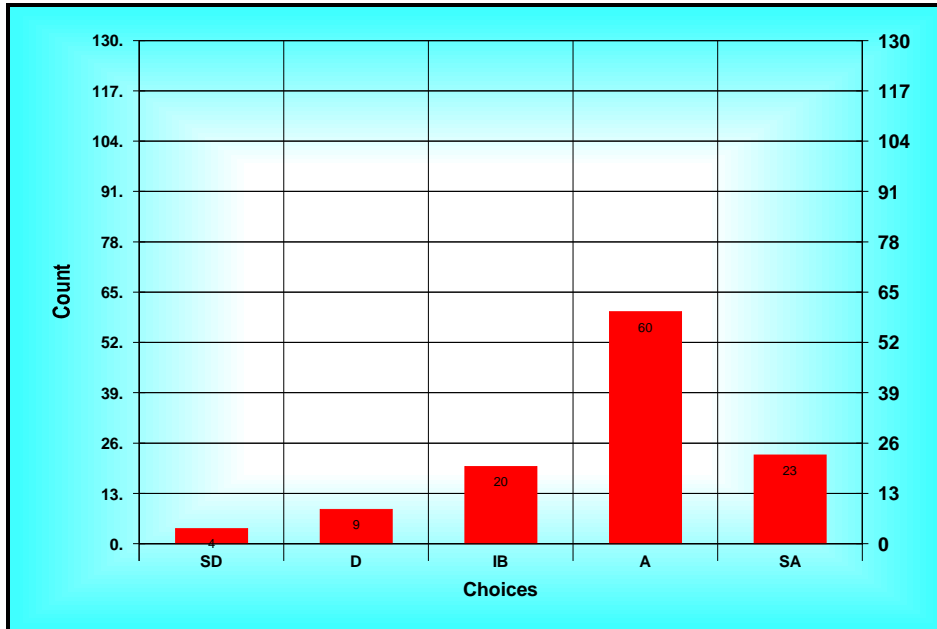
A) Ballot

Method: Custom Method
 Options: Allow Bypass
 Descriptions: SD = Strongly Disagree D = Disagree IB = In Between A = Agree SA = Strongly Agree

B) Results Spread

<i>Choices</i>	<i>Count</i>
<i>SD(1)</i>	<i>4</i>
<i>D(2)</i>	<i>9</i>
<i>IB(3)</i>	<i>20</i>
<i>A(4)</i>	<i>60</i>
<i>SA(5)</i>	<i>23</i>

Statistics
 Total 437
 Mean A(3.77)
 Mode A
 High SA
 Low SD
 STD 0.97
 N 126
 n 116



Results Chart (11. The criteria for tenure are clear.)

12. There are faculty similar to me in my department.

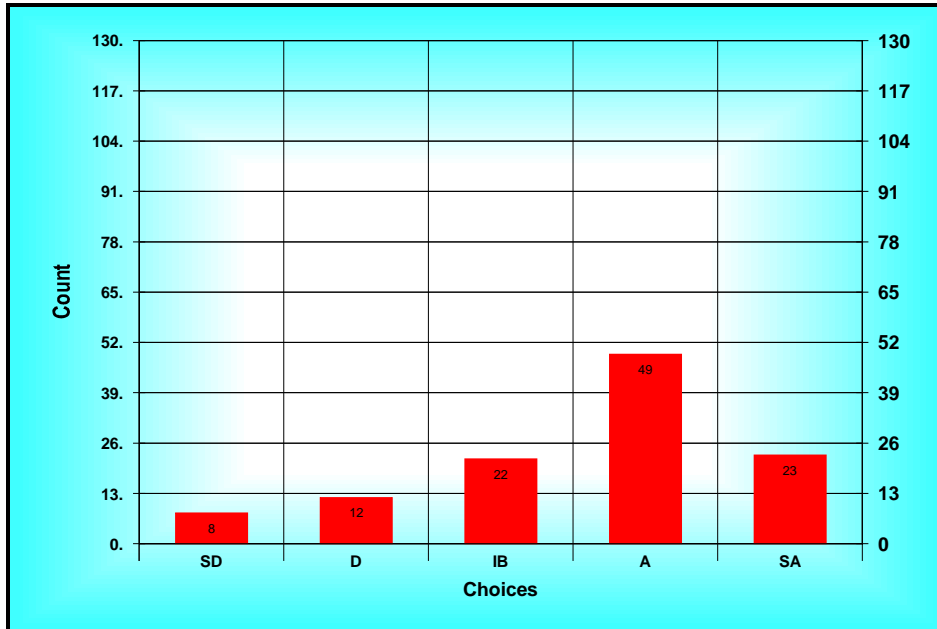
A) Ballot

Method: Custom Method
 Options: Allow Bypass
 Descriptions: SD = Strongly Disagree D = Disagree IB = In Between A = Agree SA = Strongly Agree

B) Results Spread

<i>Choices</i>	<i>Count</i>
<i>SD(1)</i>	<i>8</i>
<i>D(2)</i>	<i>12</i>
<i>IB(3)</i>	<i>22</i>
<i>A(4)</i>	<i>49</i>
<i>SA(5)</i>	<i>23</i>

Statistics
 Total 409
 Mean A(3.59)
 Mode A
 High SA
 Low SD
 STD 1.14
 N 126
 n 114



Results Chart (12. There are faculty similar to me in my department.)

13. I am dissatisfied with the fairness of my immediate supervisor’s evaluation of my work.

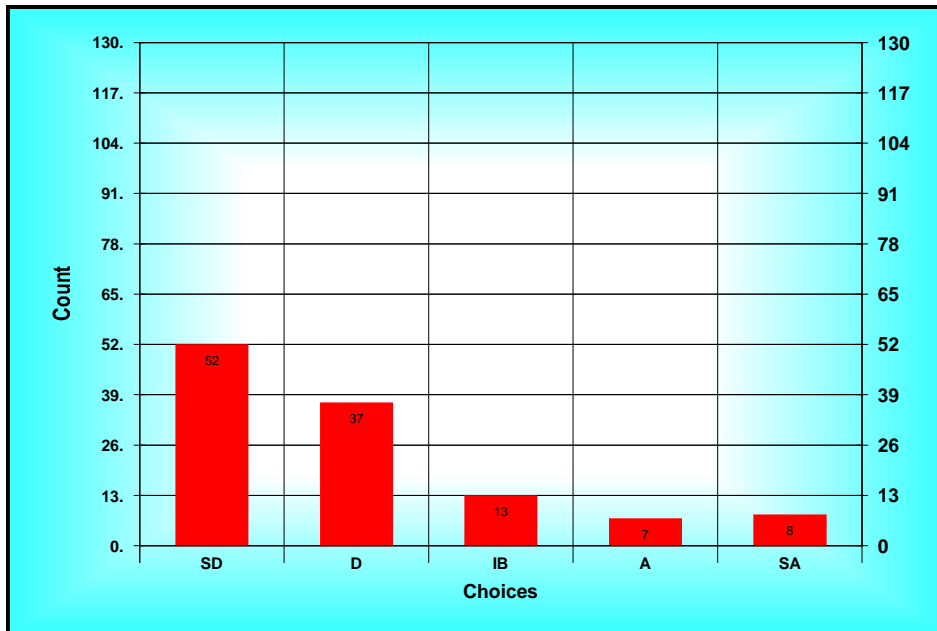
A) Ballot

Method: Custom Method
 Options: Allow Bypass
 Descriptions: SD = Strongly Disagree D = Disagree IB = In Between A = Agree SA = Strongly Agree

B) Results Spread

<i>Choices</i>	<i>Count</i>
<i>SD(1)</i>	<i>52</i>
<i>D(2)</i>	<i>37</i>
<i>IB(3)</i>	<i>13</i>
<i>A(4)</i>	<i>7</i>
<i>SA(5)</i>	<i>8</i>

Statistics
 Total 233
 Mean D(1.99)
 Mode SD
 High SA
 Low SD
 STD 1.19
 N 126
 n 117



Results Chart (13. I am dissatisfied with the fairness of my...)

14. I am dissatisfied with the quality of computer services.

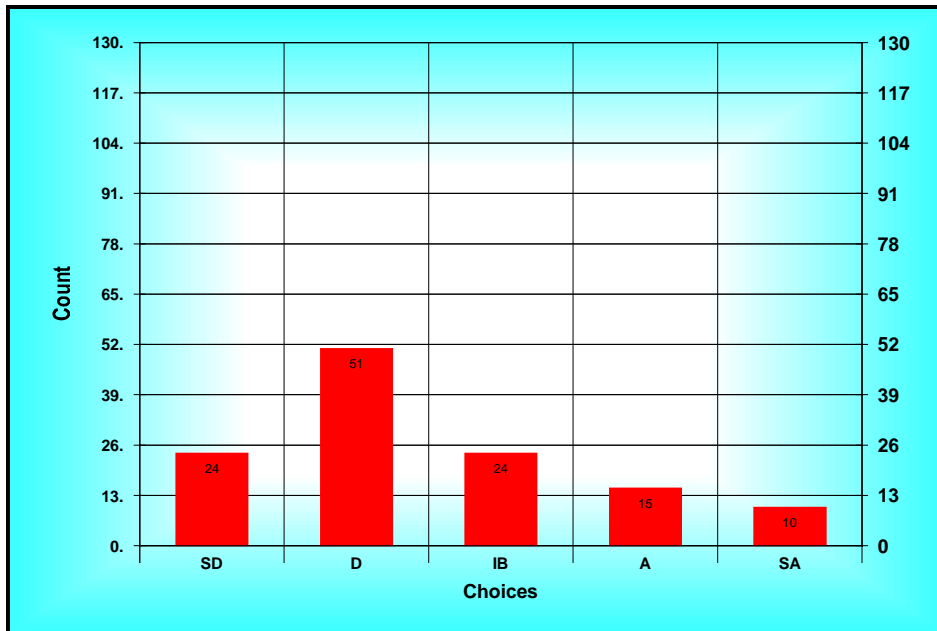
A) Ballot

Method: Custom Method
 Options: Allow Bypass
 Descriptions: SD = Strongly Disagree D = Disagree IB = In Between A = Agree SA = Strongly Agree

B) Results Spread

<i>Choices</i>	<i>Count</i>
<i>SD(1)</i>	<i>24</i>
<i>D(2)</i>	<i>51</i>
<i>IB(3)</i>	<i>24</i>
<i>A(4)</i>	<i>15</i>
<i>SA(5)</i>	<i>10</i>

Statistics
 Total 308
 Mean D(2.48)
 Mode D
 High SA
 Low SD
 STD 1.17
 N 126
 n 124



Results Chart (14. I am dissatisfied with the quality of computer...)

15. Communication between my chair and me is effective.

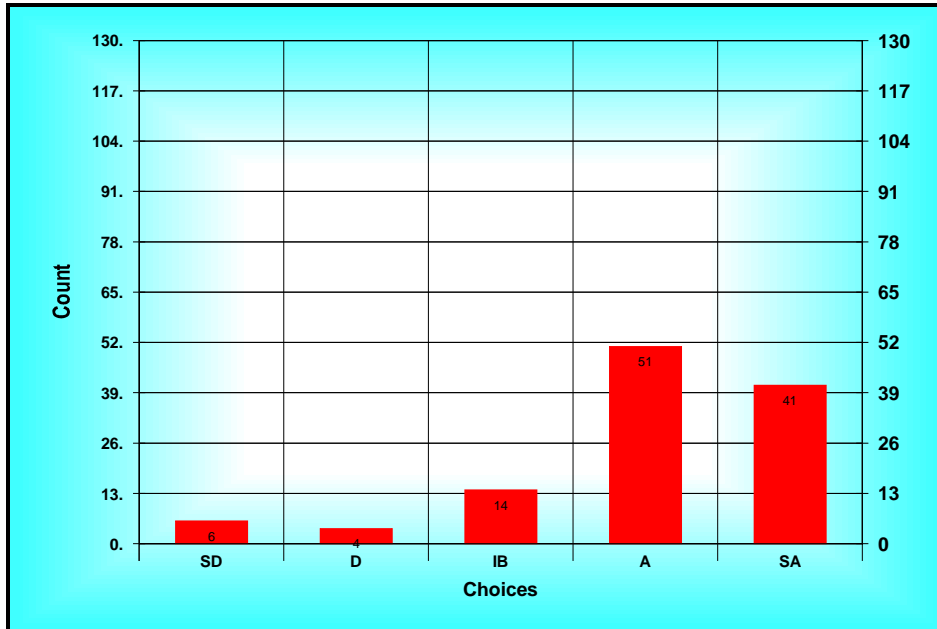
A) Ballot

Method: Custom Method
 Options: Allow Bypass
 Descriptions: SD = Strongly Disagree D = Disagree IB = In Between A = Agree SA = Strongly Agree

B) Results Spread

<i>Choices</i>	<i>Count</i>
<i>SD(1)</i>	<i>6</i>
<i>D(2)</i>	<i>4</i>
<i>IB(3)</i>	<i>14</i>
<i>A(4)</i>	<i>51</i>
<i>SA(5)</i>	<i>41</i>

Statistics
 Total 465
 Mean A(4.01)
 Mode A
 High SA
 Low SD
 STD 1.04
 N 126
 n 116



Results Chart (15. Communication between my chair and me is...)

16. NDSU is not a good place in which to work.

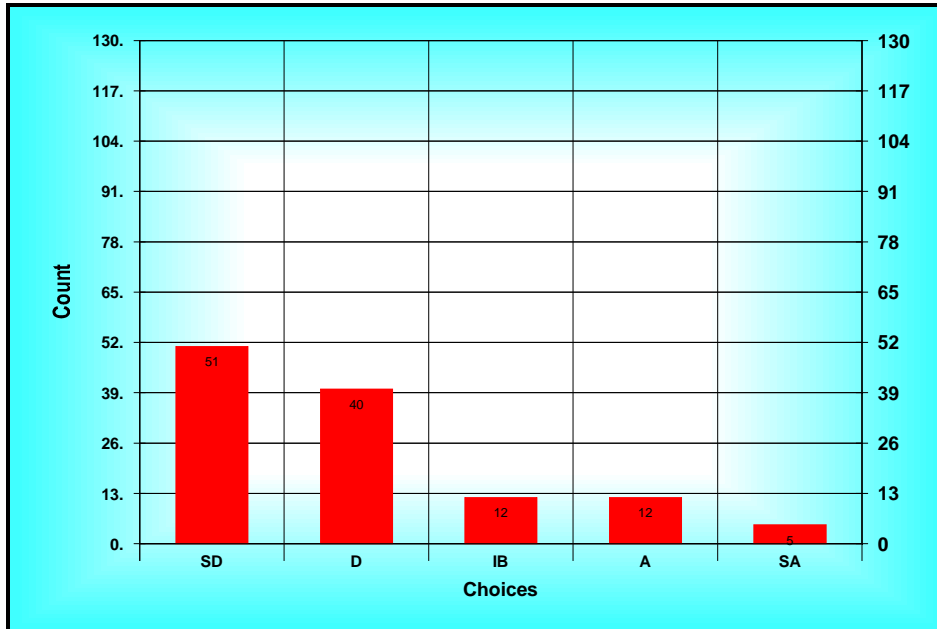
A) Ballot

Method: Custom Method
 Options: Allow Bypass
 Descriptions: SD = Strongly Disagree D = Disagree IB = In Between A = Agree SA = Strongly Agree

B) Results Spread

<i>Choices</i>	<i>Count</i>
<i>SD(1)</i>	<i>51</i>
<i>D(2)</i>	<i>40</i>
<i>IB(3)</i>	<i>12</i>
<i>A(4)</i>	<i>12</i>
<i>SA(5)</i>	<i>5</i>

Statistics
 Total 240
 Mean D(2.00)
 Mode SD
 High SA
 Low SD
 STD 1.14
 N 126
 n 120



Results Chart (16. NDSU is not a good place in which to work.)

17. If I wanted to advance to a leadership role on campus, I could do so.

A) Ballot

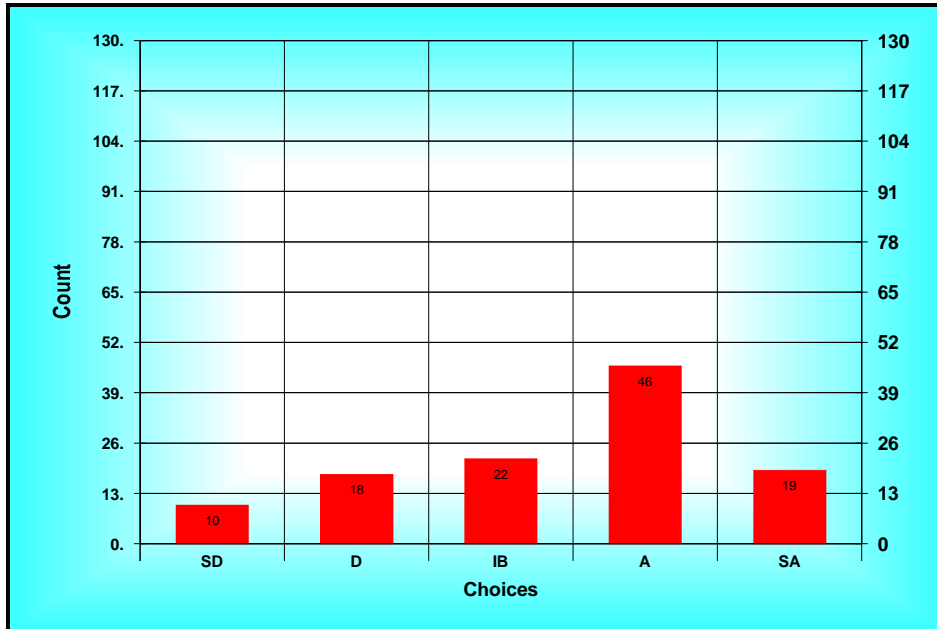
Method: Custom Method
 Options: Allow Bypass
 Descriptions: SD = Strongly Disagree D = Disagree IB = In Between A = Agree SA = Strongly Agree

B) Results Spread

<i>Choices</i>	<i>Count</i>
<i>SD(1)</i>	<i>10</i>
<i>D(2)</i>	<i>18</i>
<i>IB(3)</i>	<i>22</i>
<i>A(4)</i>	<i>46</i>
<i>SA(5)</i>	<i>19</i>

Statistics

Total 391
Mean IB(3.40)
Mode A
High SA
Low SD
STD 1.19
N 126
n 115



Results Chart (17. If I wanted to advance to a leadership role on...)

18. I do not feel a sense of unity and cohesion among the faculty in my department.

A) Ballot

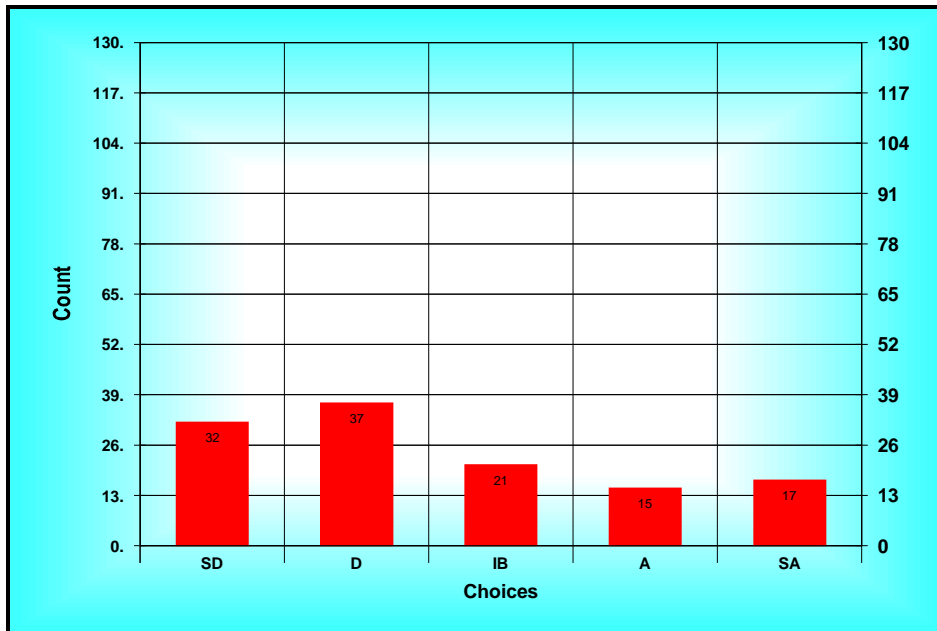
Method: Custom Method
 Options: Allow Bypass
 Descriptions: SD = Strongly Disagree D = Disagree IB = In Between A = Agree SA = Strongly Agree

B) Results Spread

<i>Choices</i>	<i>Count</i>
<i>SD(1)</i>	<i>32</i>
<i>D(2)</i>	<i>37</i>
<i>IB(3)</i>	<i>21</i>
<i>A(4)</i>	<i>15</i>
<i>SA(5)</i>	<i>17</i>

Statistics

Total 314
Mean IB(2.57)
Mode D
High SA
Low SD
STD 1.37
N 126
n 122



Results Chart (18. I do not feel a sense of unity and cohesion among...)

19. The formal mentoring program is effective.

A) Ballot

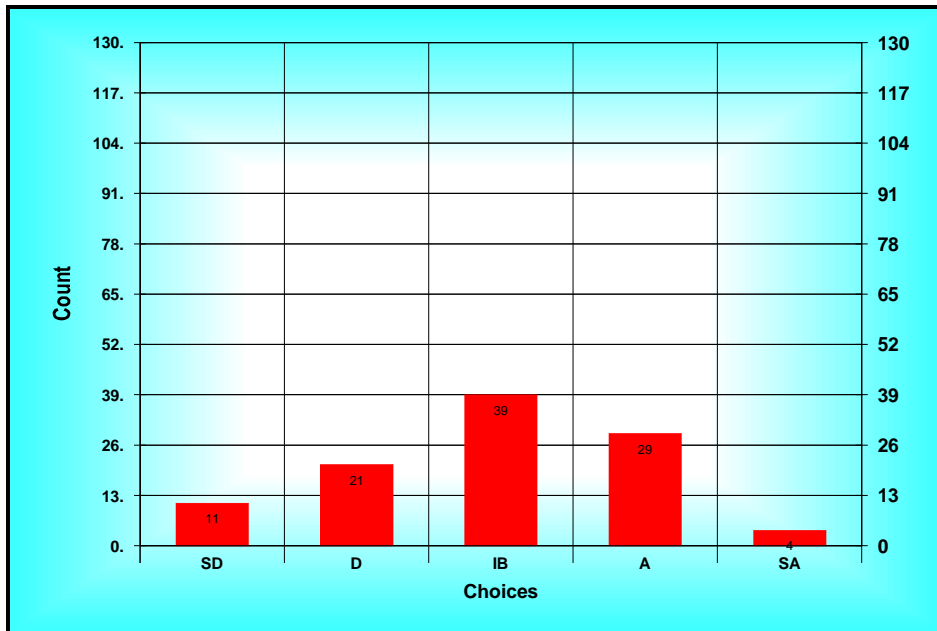
Method: Custom Method
 Options: Allow Bypass
 Descriptions: SD = Strongly Disagree D = Disagree IB = In Between A = Agree SA = Strongly Agree

B) Results Spread

<i>Choices</i>	<i>Count</i>
<i>SD(1)</i>	<i>11</i>
<i>D(2)</i>	<i>21</i>
<i>IB(3)</i>	<i>39</i>
<i>A(4)</i>	<i>29</i>
<i>SA(5)</i>	<i>4</i>

Statistics

Total 306
Mean IB(2.94)
Mode IB
High SA
Low SD
STD 1.03
N 126
n 104



Results Chart (19. The formal mentoring program is effective.)

20. My department is a good place in which to work.

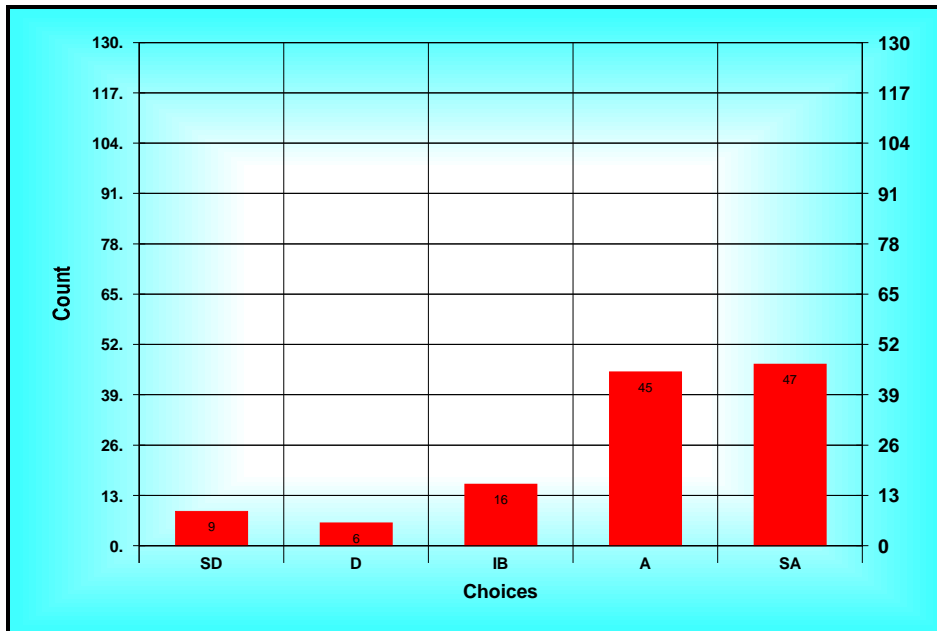
A) Ballot

Method: Custom Method
 Options: Allow Bypass
 Descriptions: SD = Strongly Disagree D = Disagree IB = In Between A = Agree SA = Strongly Agree

B) Results Spread

<i>Choices</i>	<i>Count</i>
<i>SD(1)</i>	9
<i>D(2)</i>	6
<i>IB(3)</i>	16
<i>A(4)</i>	45
<i>SA(5)</i>	47

Statistics
 Total 484
 Mean A(3.93)
 Mode SA
 High SA
 Low SD
 STD 1.17
 N 126
 n 123



Results Chart (20. My department is a good place in which to work.)

21. I am satisfied with what is expected of me as a researcher.

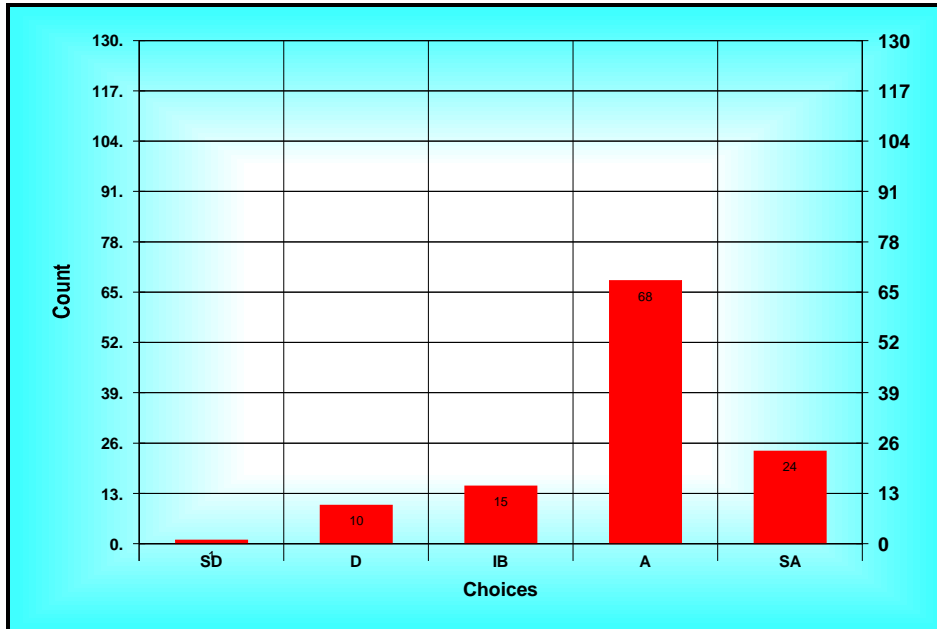
A) Ballot

Method: Custom Method
 Options: Allow Bypass
 Descriptions: SD = Strongly Disagree D = Disagree IB = In Between A = Agree SA = Strongly Agree

B) Results Spread

<i>Choices</i>	<i>Count</i>
<i>SD(1)</i>	<i>1</i>
<i>D(2)</i>	<i>10</i>
<i>IB(3)</i>	<i>15</i>
<i>A(4)</i>	<i>68</i>
<i>SA(5)</i>	<i>24</i>

Statistics
 Total 458
 Mean A(3.88)
 Mode A
 High SA
 Low SD
 STD 0.86
 N 126
 n 118



Results Chart (21. I am satisfied with what is expected of me as a...)

22. I feel a sense of unity and cohesion among the faculty in my College.

A) Ballot

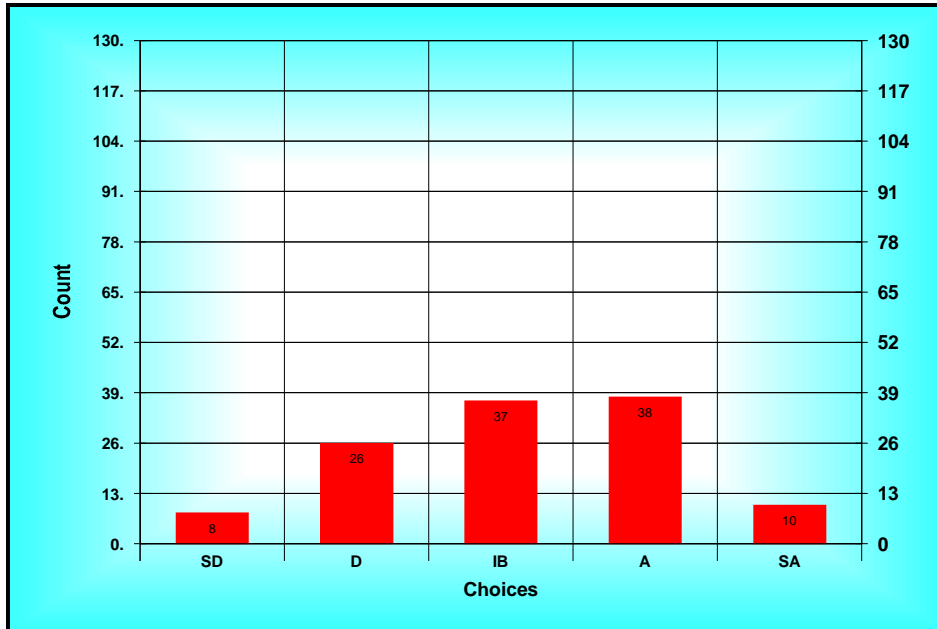
Method: Custom Method
 Options: Allow Bypass
 Descriptions: SD = Strongly Disagree D = Disagree IB = In Between A = Agree SA = Strongly Agree

B) Results Spread

<i>Choices</i>	<i>Count</i>
<i>SD(1)</i>	8
<i>D(2)</i>	26
<i>IB(3)</i>	37
<i>A(4)</i>	38
<i>SA(5)</i>	10

Statistics

Total 373
 Mean IB(3.13)
 Mode A
 High SA
 Low SD
 STD 1.07
 N 126
 n 119



Results Chart (22. I feel a sense of unity and cohesion among the...)

23. I am satisfied with the amount of time I have to conduct research.

A) Ballot

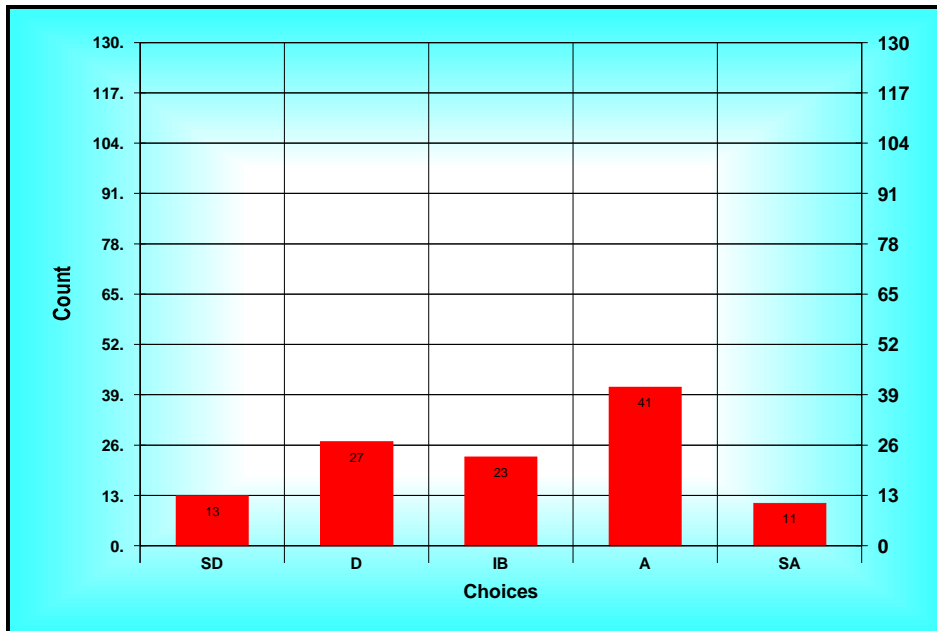
Method: Custom Method
 Options: Allow Bypass
 Descriptions: SD = Strongly Disagree D = Disagree IB = In Between A = Agree SA = Strongly Agree

B) Results Spread

<i>Choices</i>	<i>Count</i>
<i>SD(1)</i>	<i>13</i>
<i>D(2)</i>	<i>27</i>
<i>IB(3)</i>	<i>23</i>
<i>A(4)</i>	<i>41</i>
<i>SA(5)</i>	<i>11</i>

Statistics

Total 355
Mean IB(3.09)
Mode A
High SA
Low SD
STD 1.20
N 126
n 115



Results Chart (23. I am satisfied with the amount of time I have to...)

24. I am satisfied with the financial support (travel, equipment, etc) my department gives me.

A) Ballot

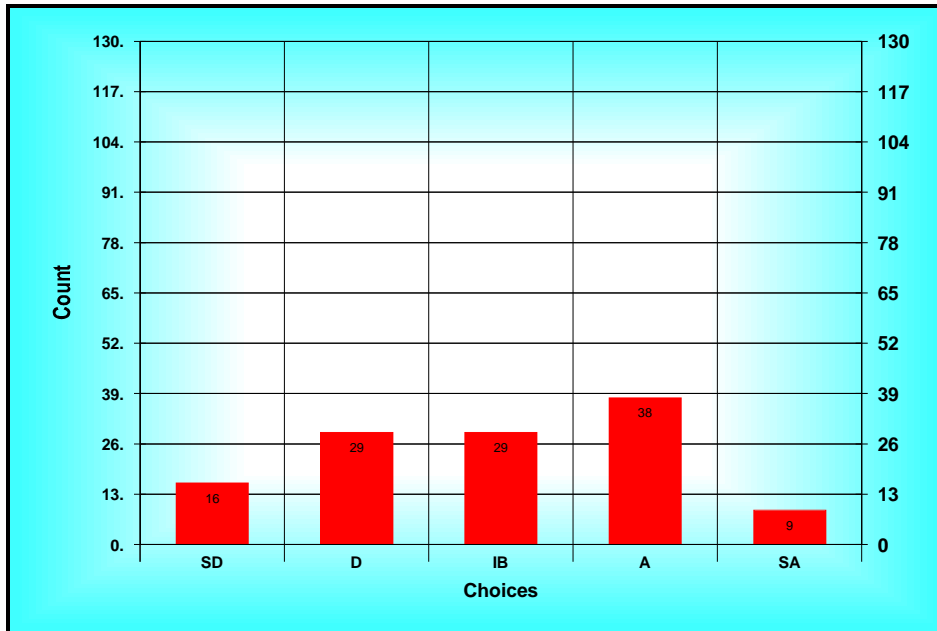
Method: Custom Method
 Options: Allow Bypass
 Descriptions: SD = Strongly Disagree D = Disagree IB = In Between A = Agree SA = Strongly Agree

B) Results Spread

<i>Choices</i>	<i>Count</i>
<i>SD(1)</i>	<i>16</i>
<i>D(2)</i>	<i>29</i>
<i>IB(3)</i>	<i>29</i>
<i>A(4)</i>	<i>38</i>
<i>SA(5)</i>	<i>9</i>

Statistics

Total 358
Mean IB(2.96)
Mode A
High SA
Low SD
STD 1.18
N 126
n 121



Results Chart (24. I am satisfied with the financial support...)

25. Departmental (chair and colleagues) do what they can to make any family leave situation and the tenure-track compatible.

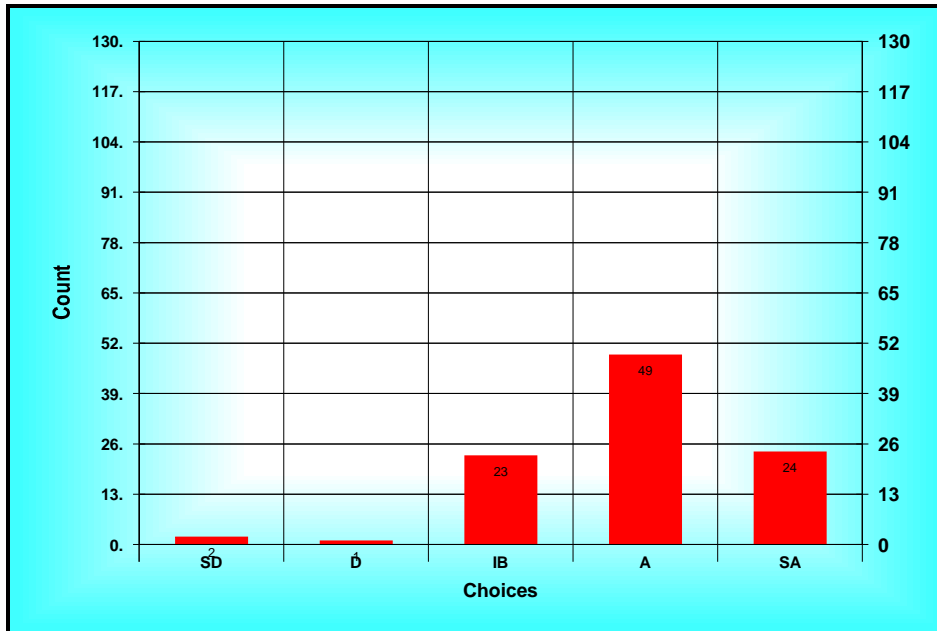
A) Ballot

Method: Custom Method
 Options: Allow Bypass
 Descriptions: SD = Strongly Disagree D = Disagree IB = In Between A = Agree SA = Strongly Agree

B) Results Spread

<i>Choices</i>	<i>Count</i>
<i>SD(1)</i>	<i>2</i>
<i>D(2)</i>	<i>1</i>
<i>IB(3)</i>	<i>23</i>
<i>A(4)</i>	<i>49</i>
<i>SA(5)</i>	<i>24</i>

Statistics
 Total 389
 Mean A(3.93)
 Mode A
 High SA
 Low SD
 STD 0.84
 N 126
 n 99



Results Chart (25. Departmental (chair and colleagues) do what they...)

26. I am dissatisfied with the balance I am able to strike between professional time and personal/family time.

A) Ballot

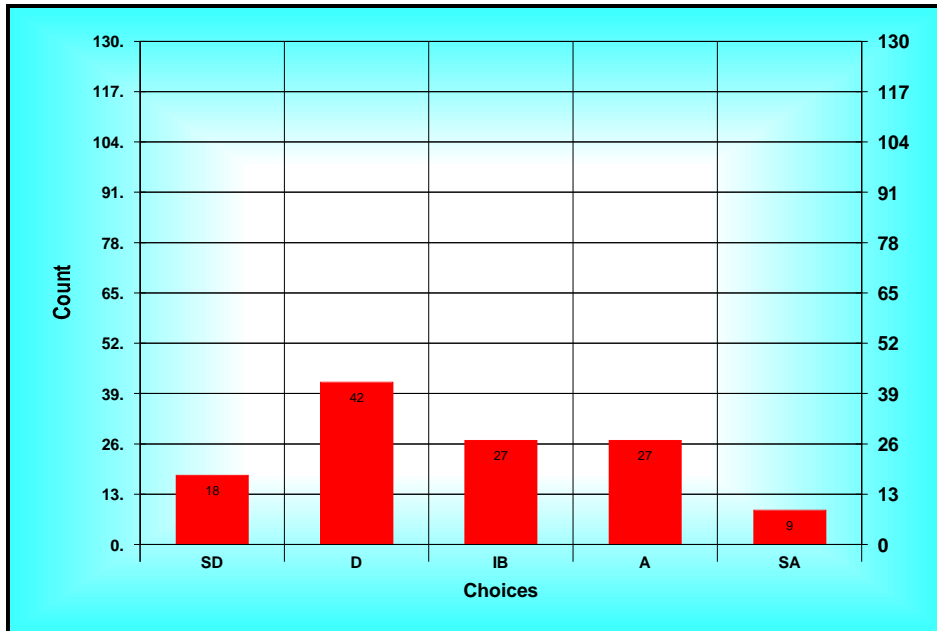
Method: Custom Method
 Options: Allow Bypass
 Descriptions: SD = Strongly Disagree D = Disagree IB = In Between A = Agree SA = Strongly Agree

B) Results Spread

<i>Choices</i>	<i>Count</i>
<i>SD(1)</i>	<i>18</i>
<i>D(2)</i>	<i>42</i>
<i>IB(3)</i>	<i>27</i>
<i>A(4)</i>	<i>27</i>
<i>SA(5)</i>	<i>9</i>

Statistics

Total 336
Mean IB(2.73)
Mode D
High SA
Low SD
STD 1.17
N 126
n 123



Results Chart (26. I am dissatisfied with the balance I am able to...)

27. There are faculty similar to me in my college.

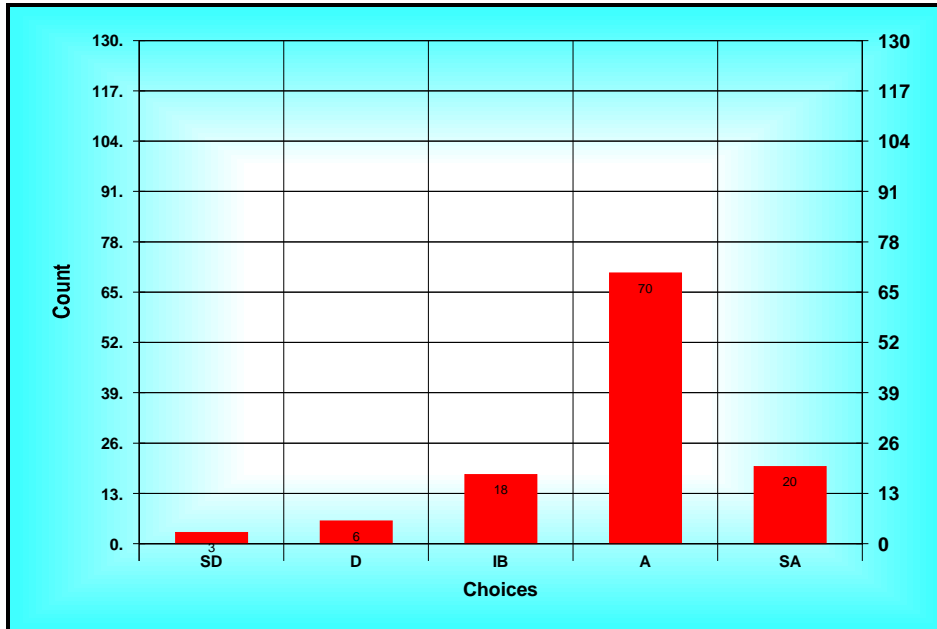
A) Ballot

Method: Custom Method
 Options: Allow Bypass
 Descriptions: SD = Strongly Disagree D = Disagree IB = In Between A = Agree SA = Strongly Agree

B) Results Spread

<i>Choices</i>	<i>Count</i>
<i>SD(1)</i>	<i>3</i>
<i>D(2)</i>	<i>6</i>
<i>IB(3)</i>	<i>18</i>
<i>A(4)</i>	<i>70</i>
<i>SA(5)</i>	<i>20</i>

Statistics
 Total 449
 Mean A(3.84)
 Mode A
 High SA
 Low SD
 STD 0.86
 N 126
 n 117



Results Chart (27. There are faculty similar to me in my college.)

28. I am satisfied with the professional/collegial support my department gives me.

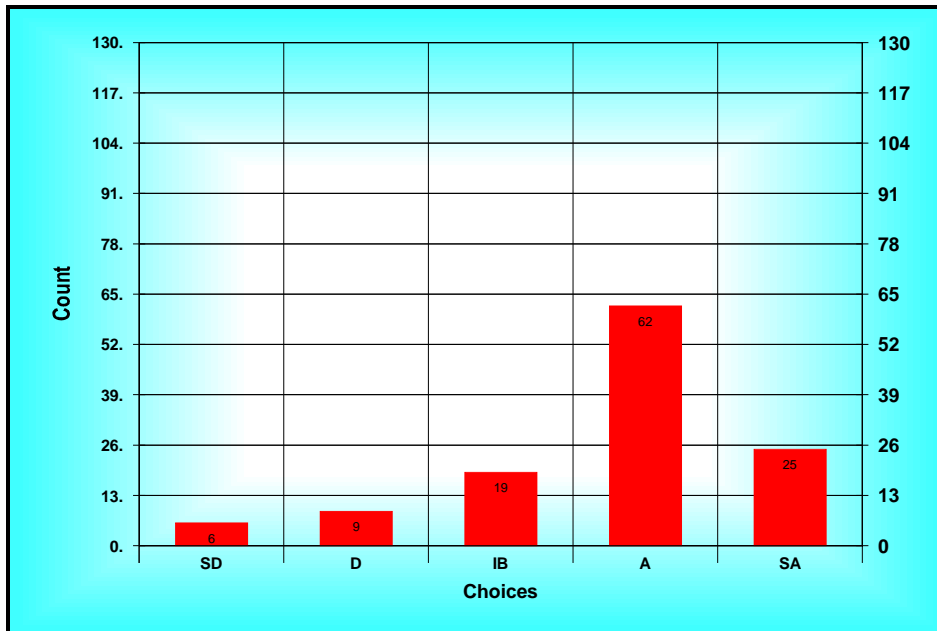
A) Ballot

Method: Custom Method
 Options: Allow Bypass
 Descriptions: SD = Strongly Disagree D = Disagree IB = In Between A = Agree SA = Strongly Agree

B) Results Spread

<i>Choices</i>	<i>Count</i>
<i>SD(1)</i>	6
<i>D(2)</i>	9
<i>IB(3)</i>	19
<i>A(4)</i>	62
<i>SA(5)</i>	25

Statistics
 Total 454
 Mean A(3.75)
 Mode A
 High SA
 Low SD
 STD 1.03
 N 126
 n 121



Results Chart (28. I am satisfied with the professional/collegial...)

29. I do not like the Fargo community.

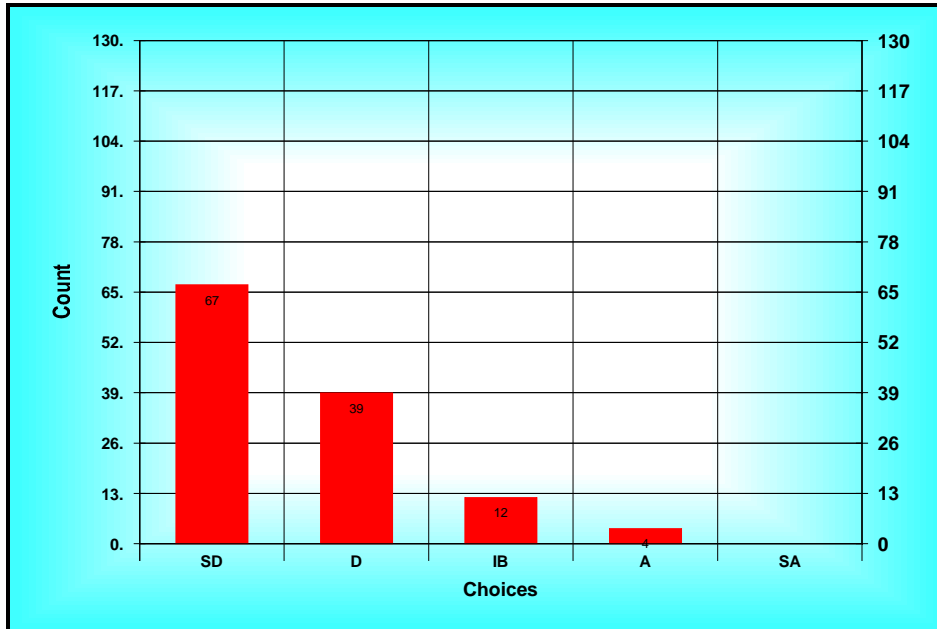
A) Ballot

Method: Custom Method
 Options: Allow Bypass
 Descriptions: SD = Strongly Disagree D = Disagree IB = In Between A = Agree SA = Strongly Agree

B) Results Spread

<i>Choices</i>	<i>Count</i>
<i>SD(1)</i>	<i>67</i>
<i>D(2)</i>	<i>39</i>
<i>IB(3)</i>	<i>12</i>
<i>A(4)</i>	<i>4</i>
<i>SA(5)</i>	<i>0</i>

Statistics
 Total 197
 Mean D(1.61)
 Mode SD
 High A
 Low SD
 STD 0.80
 N 126
 n 122



Results Chart (29. I do not like the Fargo community.)

30. There are sufficient opportunities to collaborate on research with other faculty at NDSU.

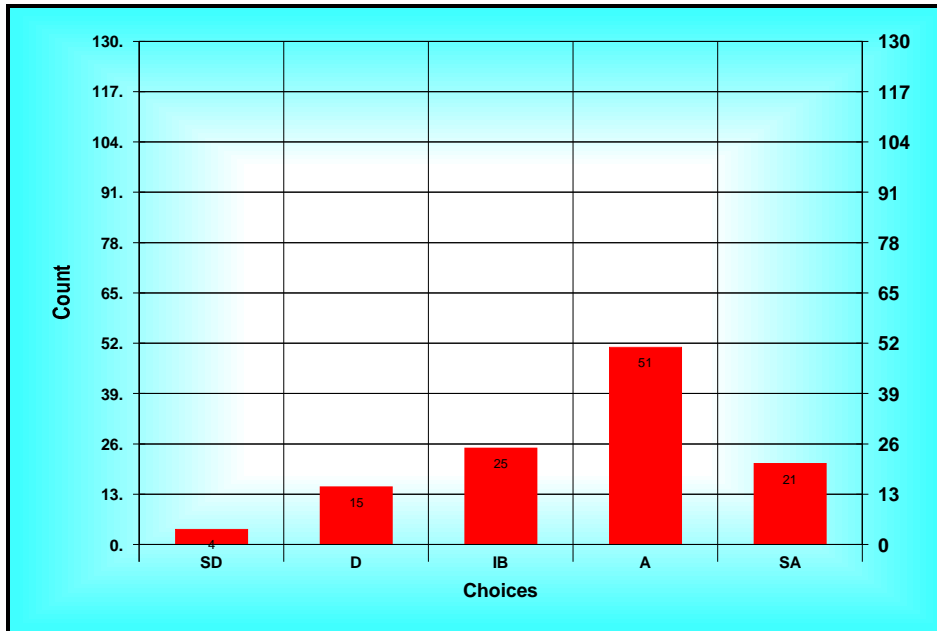
A) Ballot

Method: Custom Method
 Options: Allow Bypass
 Descriptions: SD = Strongly Disagree D = Disagree IB = In Between A = Agree SA = Strongly Agree

B) Results Spread

<i>Choices</i>	<i>Count</i>
<i>SD(1)</i>	<i>4</i>
<i>D(2)</i>	<i>15</i>
<i>IB(3)</i>	<i>25</i>
<i>A(4)</i>	<i>51</i>
<i>SA(5)</i>	<i>21</i>

Statistics
 Total 418
 Mean A(3.60)
 Mode A
 High SA
 Low SD
 STD 1.04
 N 126
 n 116



Results Chart (30. There are sufficient opportunities to collaborate...)

31. I am satisfied with my salary at NDSU.

A) Ballot

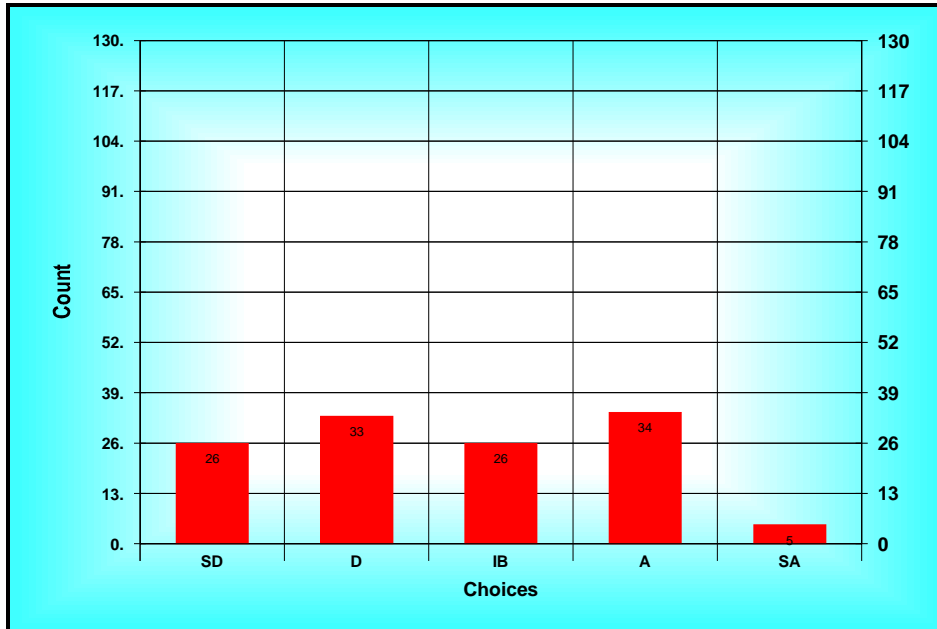
Method: Custom Method
 Options: Allow Bypass
 Descriptions: SD = Strongly Disagree D = Disagree IB = In Between A = Agree SA = Strongly Agree

B) Results Spread

<i>Choices</i>	<i>Count</i>
<i>SD(1)</i>	26
<i>D(2)</i>	33
<i>IB(3)</i>	26
<i>A(4)</i>	34
<i>SA(5)</i>	5

Statistics

Total 331
 Mean IB(2.67)
 Mode A
 High SA
 Low SD
 STD 1.20
 N 126
 n 124



Results Chart (31. I am satisfied with my salary at NDSU.)

32. I am satisfied with the quality of NDSU’s graduate students.

A) Ballot

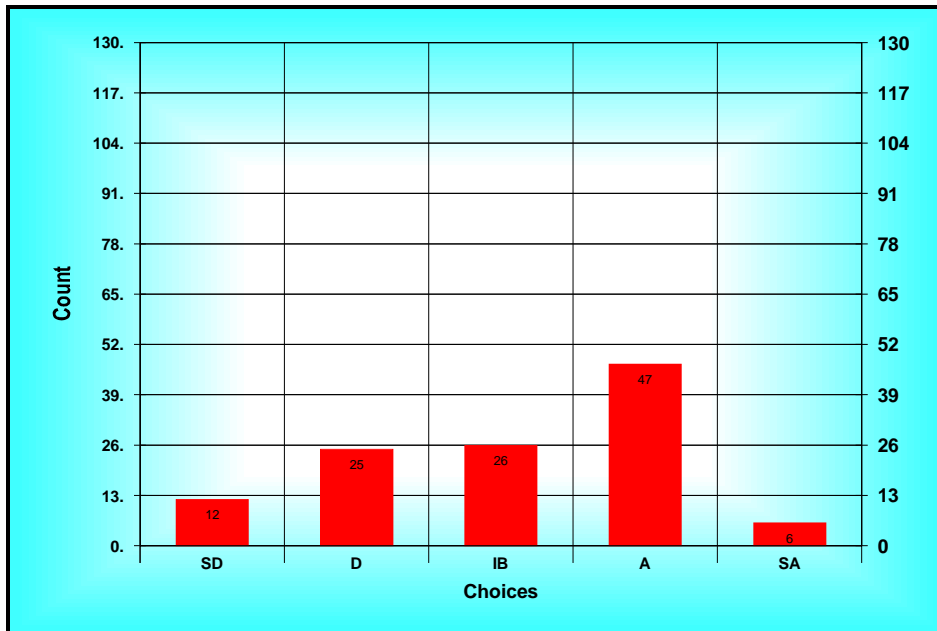
Method: Custom Method
 Options: Allow Bypass
 Descriptions: SD = Strongly Disagree D = Disagree IB = In Between A = Agree SA = Strongly Agree

B) Results Spread

<i>Choices</i>	<i>Count</i>
<i>SD(1)</i>	<i>12</i>
<i>D(2)</i>	<i>25</i>
<i>IB(3)</i>	<i>26</i>
<i>A(4)</i>	<i>47</i>
<i>SA(5)</i>	<i>6</i>

Statistics

Total 358
Mean IB(3.09)
Mode A
High SA
Low SD
STD 1.12
N 126
n 116



Results Chart (32. I am satisfied with the quality of NDSU’s...)

33. I am satisfied with the quality of NDSU’s undergraduate students.

A) Ballot

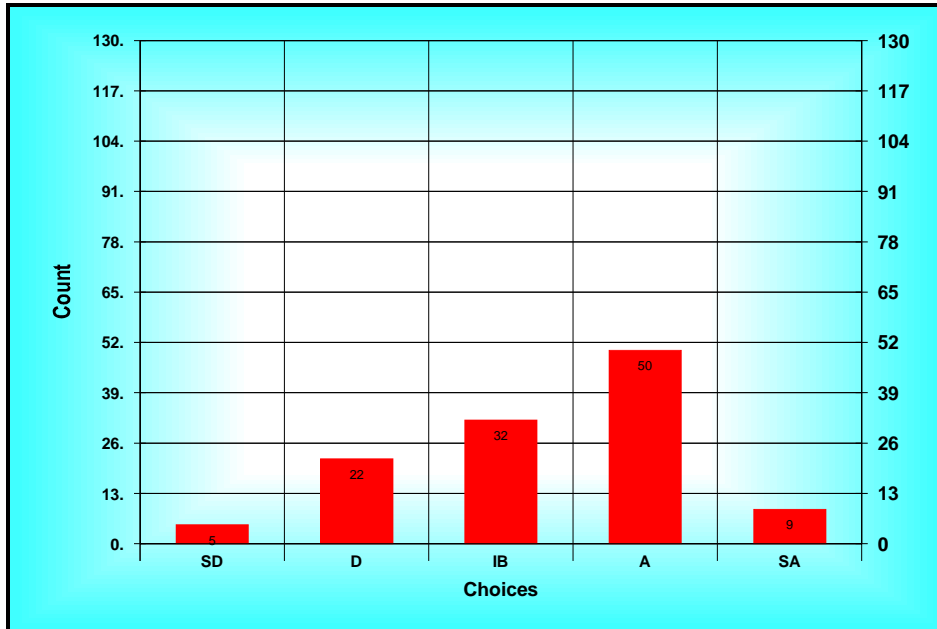
Method: Custom Method
 Options: Allow Bypass
 Descriptions: SD = Strongly Disagree D = Disagree IB = In Between A = Agree SA = Strongly Agree

B) Results Spread

<i>Choices</i>	<i>Count</i>
<i>SD(1)</i>	5
<i>D(2)</i>	22
<i>IB(3)</i>	32
<i>A(4)</i>	50
<i>SA(5)</i>	9

Statistics

Total 390
Mean IB(3.31)
Mode A
High SA
Low SD
STD 1.00
N 126
n 118



Results Chart (33. I am satisfied with the quality of NDSU’s...)

34. I am satisfied with the quality of NDSU’s library support and services.

A) Ballot

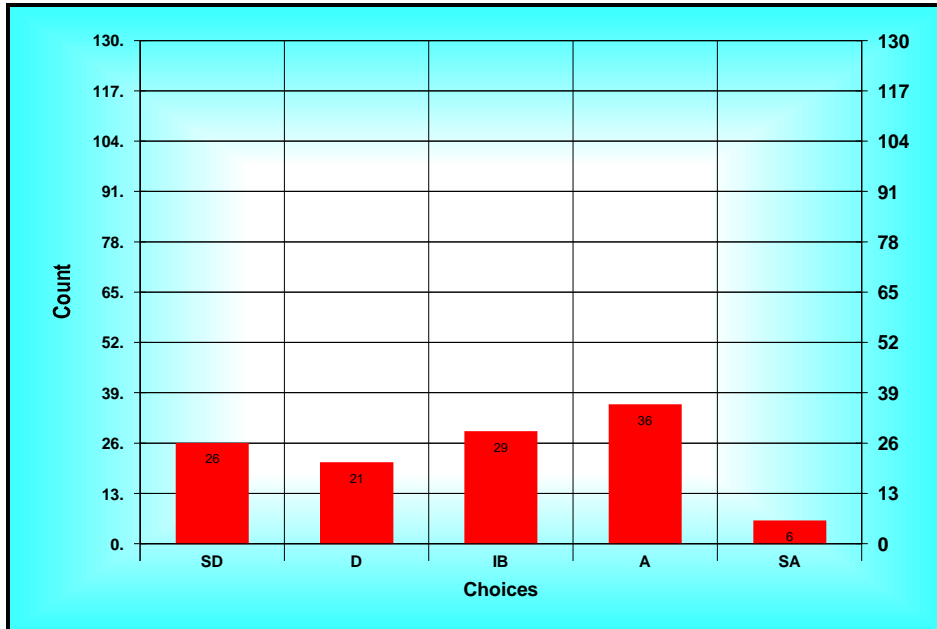
Method: Custom Method
 Options: Allow Bypass
 Descriptions: SD = Strongly Disagree D = Disagree IB = In Between A = Agree SA = Strongly Agree

B) Results Spread

<i>Choices</i>	<i>Count</i>
<i>SD(1)</i>	26
<i>D(2)</i>	21
<i>IB(3)</i>	29
<i>A(4)</i>	36
<i>SA(5)</i>	6

Statistics

Total 329
 Mean IB(2.79)
 Mode A
 High SA
 Low SD
 STD 1.24
 N 126
 n 118



Results Chart (34. I am satisfied with the quality of NDSU’s ...)

35. My job at NDSU is stressful due to the difficulty in balancing work and family.

A) Ballot

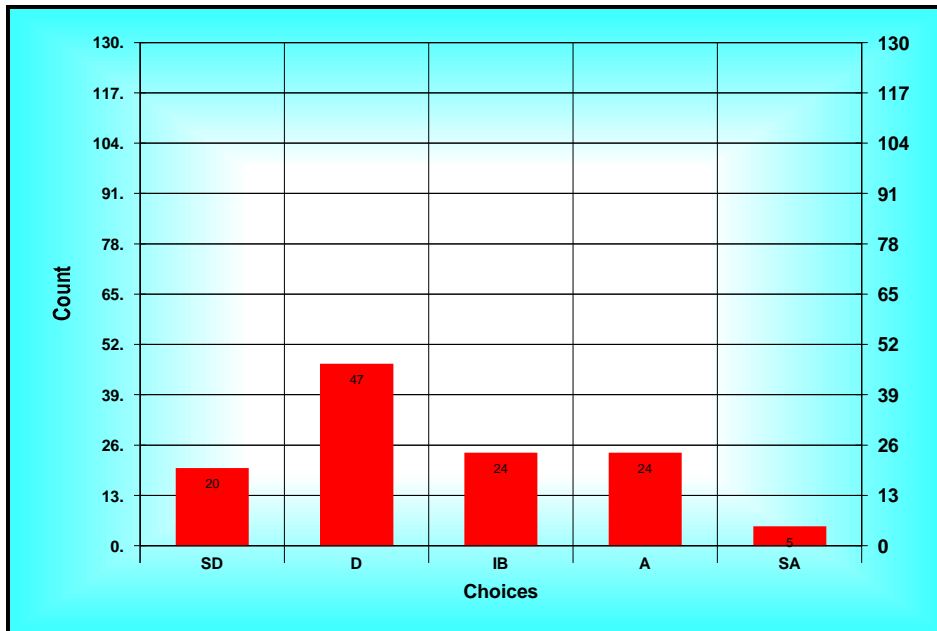
Method: Custom Method
 Options: Allow Bypass
 Descriptions: SD = Strongly Disagree D = Disagree IB = In Between A = Agree SA = Strongly Agree

B) Results Spread

<i>Choices</i>	<i>Count</i>
<i>SD(1)</i>	<i>20</i>
<i>D(2)</i>	<i>47</i>
<i>IB(3)</i>	<i>24</i>
<i>A(4)</i>	<i>24</i>
<i>SA(5)</i>	<i>5</i>

Statistics

Total 307
Mean IB(2.56)
Mode D
High SA
Low SD
STD 1.11
N 126
n 120



Results Chart (35. My job at NDSU is stressful due to the difficulty...)