

**For current faculty (Survey)**

**Survey Results**

1 filter(s) defined

Total Number of Respondents (N): 123 of 237

**1. Sex:**

**A) Ballot**

Method: Multiple Selection  
Options: Allow Bypass  
Maximum Selections: [1]  
Descriptions: Please choose one  
Number of Choices: 2

**B) Results Spread**

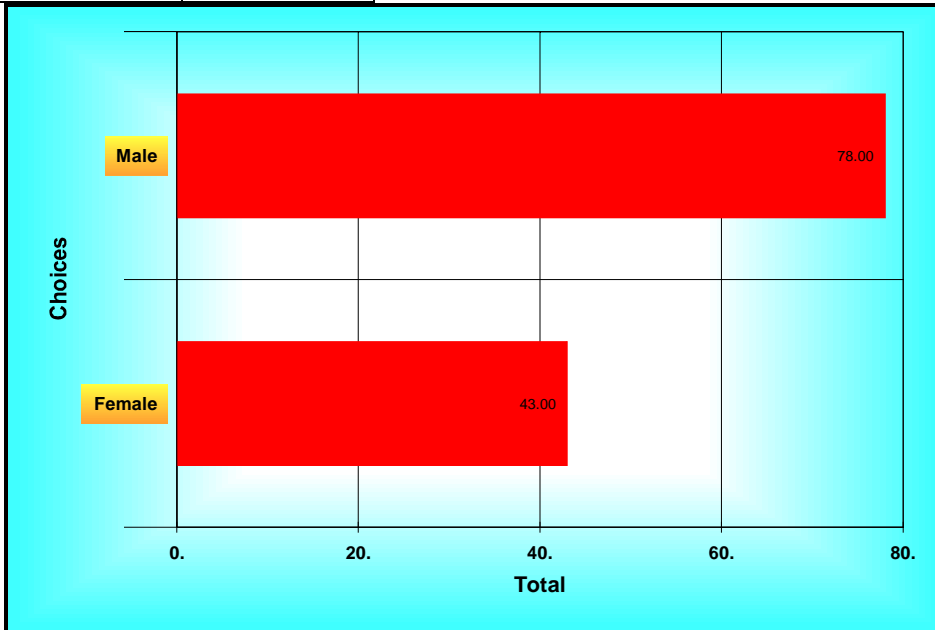
*Statistics*

Total 2.00

N 123

*Table Sorted By Total*

Choices	Total
Male	78
Female	43



**Results Chart (1. Sex:)**

**2. Rank at NDSU:**

**A) Ballot**

Method: Multiple Selection  
 Options: Allow Bypass  
 Enter Text for Last Choice  
 Maximum Selections: [1]  
 Descriptions: Please choose one  
 Number of Choices: 4

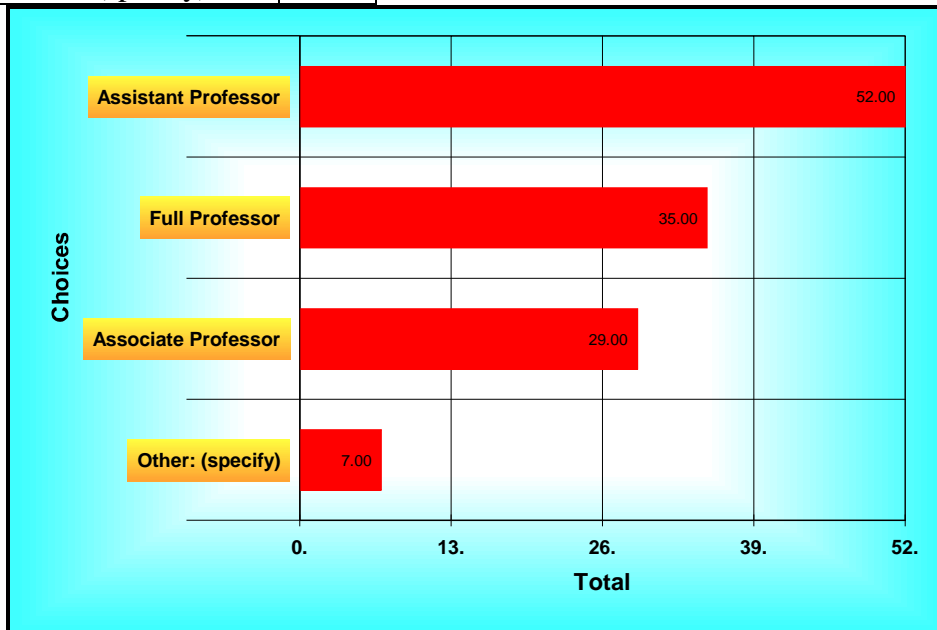
**B) Results Spread**

*Statistics*  
 Total 4.00  
 N 123  
 Table Sorted By Total

**C) Text Responses**

1. Lecturer
2. You need to ask not only concerns within Departments but also concerns about NDSU higher administration, their performance, and the need of being evaluated for what they do and how do they perform the same way a faculty is evaluated
3. Research Assistant Professor
4. research professor
5. Sr. Lecturer
6. Extension Specialist - not tenure track
7. Lecturer - special hire

Choices	Total
Assistant Professor	52
Full Professor	35
Associate Professor	29
Other: (specify)	7



**Results Chart (2. Rank at NDSU:)**

**3. Number of years at that rank:**

**A) Ballot**

Method: Multiple Selection  
 Options: Allow Bypass  
 Maximum Selections: [1]  
 Descriptions: Please choose one  
 Number of Choices: 7

**B) Results Spread**

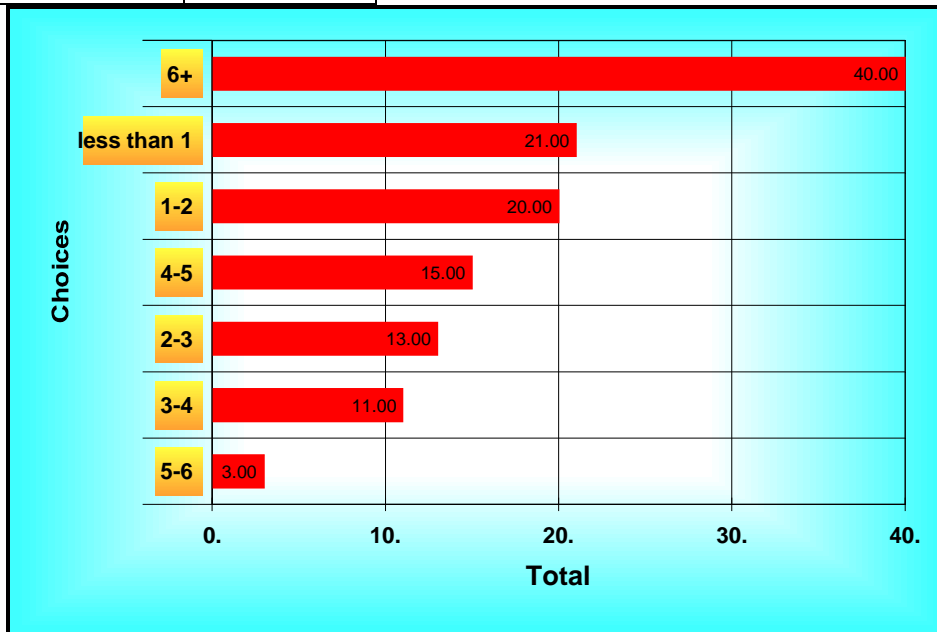
*Statistics*

Total 7.00

N 123

*Table Sorted By Total*

Choices	Total
6+	40
less than 1	21
1-2	20
4-5	15
2-3	13
3-4	11
5-6	3



**Results Chart (3. Number of years at that rank:)**

**Filter- (check box if you are in a Science, Math, Engin...**

**4. In what area is your appointment?**

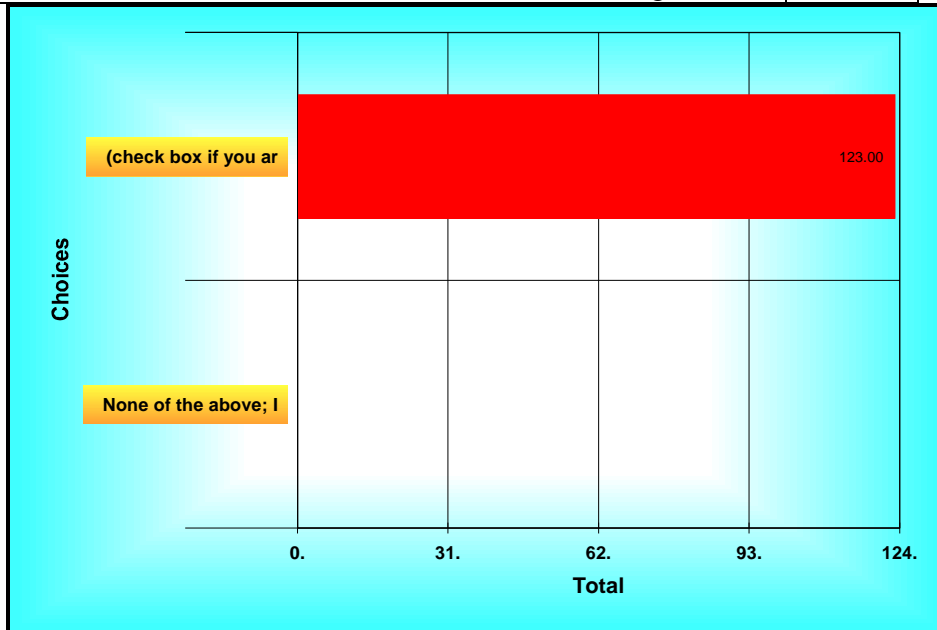
**A) Ballot**

Method: Multiple Selection  
 Options: Allow Bypass  
 Maximum Selections: [1]  
 Descriptions: Please choose one  
 Number of Choices: 2

**B) Results Spread**

*Statistics*  
 Total 1.00  
 N 123  
 Table Sorted By Total

Choices	Total
(check box if you are in a Science, Math, Engineer	123
None of the above; I was not in Science, Math, Eng	0



**Results Chart (4. In what area is your appointment? )**

**5. Current relationship status:**

**A) Ballot**

Method: Multiple Selection  
 Options: Allow Bypass  
 Enter Text for Last Choice  
 Maximum Selections: [1]  
 Descriptions: Please choose one  
 Number of Choices: 8

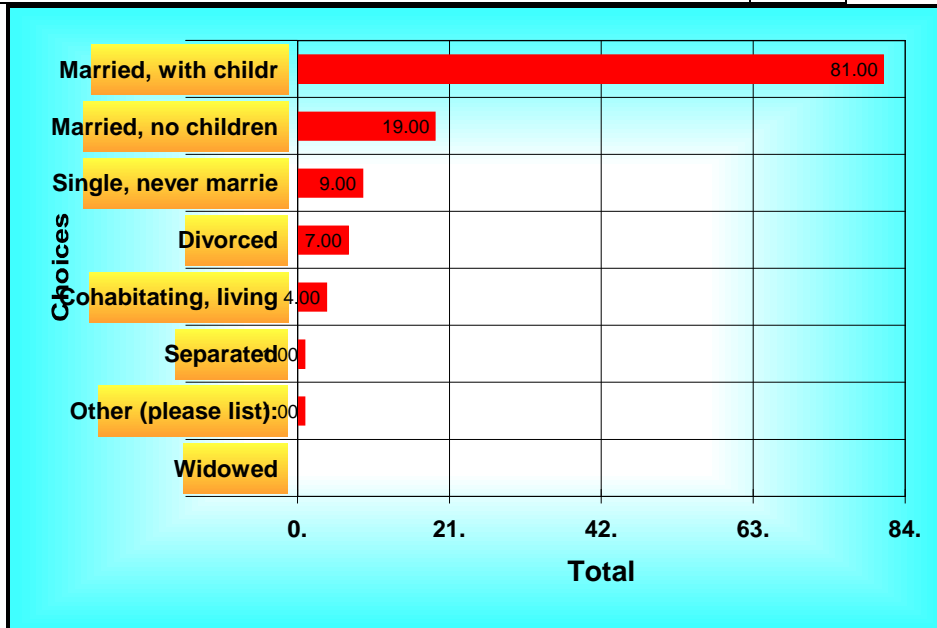
**B) Results Spread**

*Statistics*  
 Total 7.00  
 N 123  
 Table Sorted By Total

**C) Text Responses**

1. divorced with one child

Choices	Total
Married, with children	81
Married, no children	19
Single, never married	9
Divorced	7
Cohabiting, living with your partner in an intim	4
Separated	1
Other (please list):	1
Widowed	0



**Results Chart (5. Current relationship status: )**

**6. The tenure process is clear.**

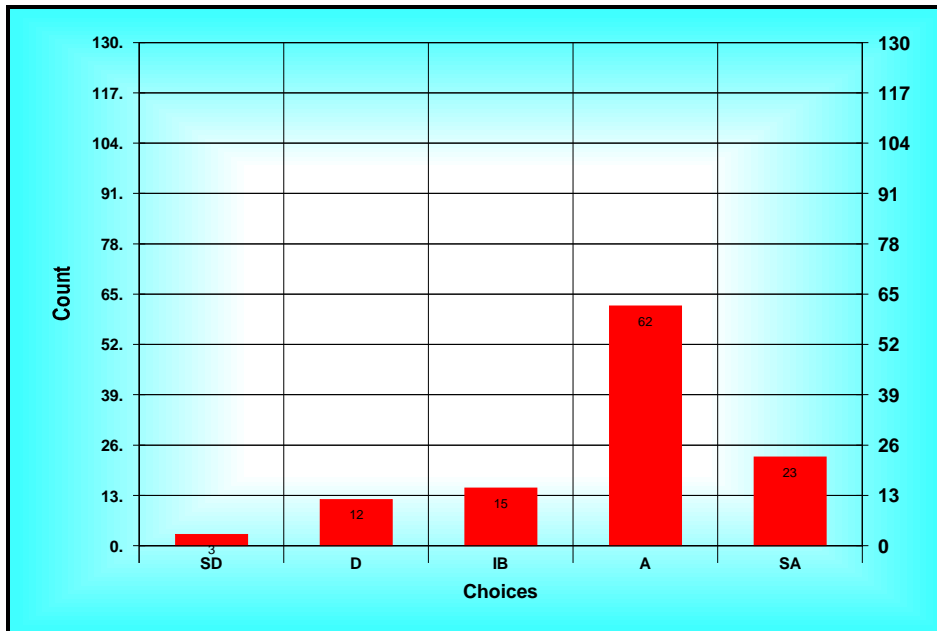
**A) Ballot**

Method: Custom Method  
 Options: Allow Bypass  
 Descriptions: SD = Strongly Disagree D = Disagree IB = In Between A = Agree SA = Strongly Agree

**B) Results Spread**

<i>Choices</i>	<i>Count</i>
<i>SD(1)</i>	<i>3</i>
<i>D(2)</i>	<i>12</i>
<i>IB(3)</i>	<i>15</i>
<i>A(4)</i>	<i>62</i>
<i>SA(5)</i>	<i>23</i>

*Statistics*  
 Total 435  
 Mean A(3.78)  
 Mode A  
 High SA  
 Low SD  
 STD 0.97  
 N 123  
 n 115



**Results Chart (6. The tenure process is clear.)**

**7. I am satisfied with the number of courses I taught.**

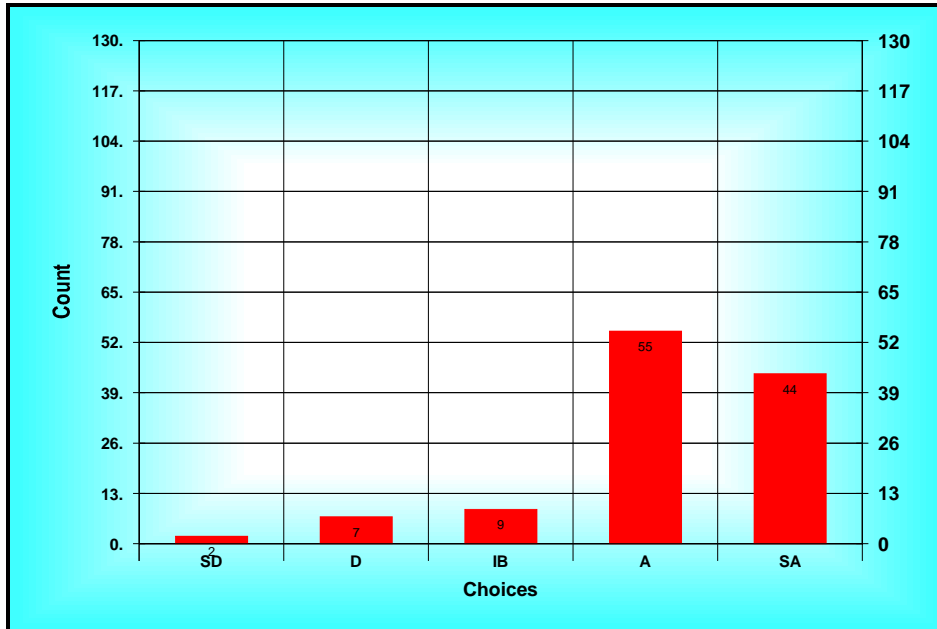
**A) Ballot**

Method: Custom Method  
 Options: Allow Bypass  
 Descriptions: SD = Strongly Disagree D = Disagree IB = In Between A = Agree SA = Strongly Agree

**B) Results Spread**

<i>Choices</i>	<i>Count</i>
<i>SD(1)</i>	2
<i>D(2)</i>	7
<i>IB(3)</i>	9
<i>A(4)</i>	55
<i>SA(5)</i>	44

*Statistics*  
 Total 483  
 Mean A(4.13)  
 Mode A  
 High SA  
 Low SD  
 STD 0.91  
 N 123  
 n 117



**Results Chart (7. I am satisfied with the number of courses I...)**



**8. Communication within my department is not effective.**

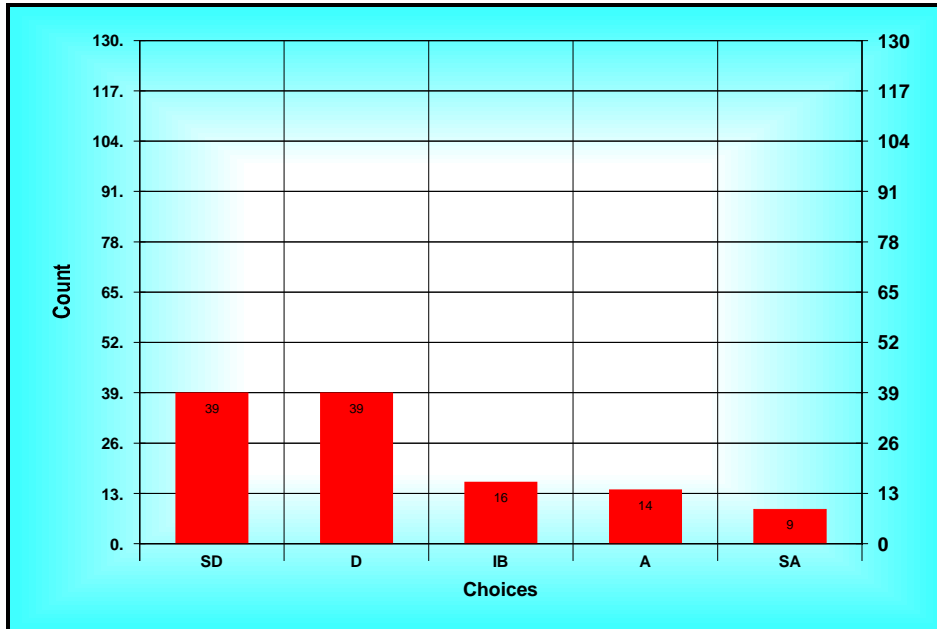
**A) Ballot**

Method: Custom Method  
 Options: Allow Bypass  
 Descriptions: SD = Strongly Disagree D = Disagree IB = In Between A = Agree SA = Strongly Agree

**B) Results Spread**

<i>Choices</i>	<i>Count</i>
<i>SD(1)</i>	<i>39</i>
<i>D(2)</i>	<i>39</i>
<i>IB(3)</i>	<i>16</i>
<i>A(4)</i>	<i>14</i>
<i>SA(5)</i>	<i>9</i>

*Statistics*  
 Total 266  
 Mean D(2.27)  
 Mode ??  
 High SA  
 Low SD  
 STD 1.26  
 N 123  
 n 117



**Results Chart (8. Communication within my department is not...)**

**9. The expectations for performance as a department colleague are clear.**

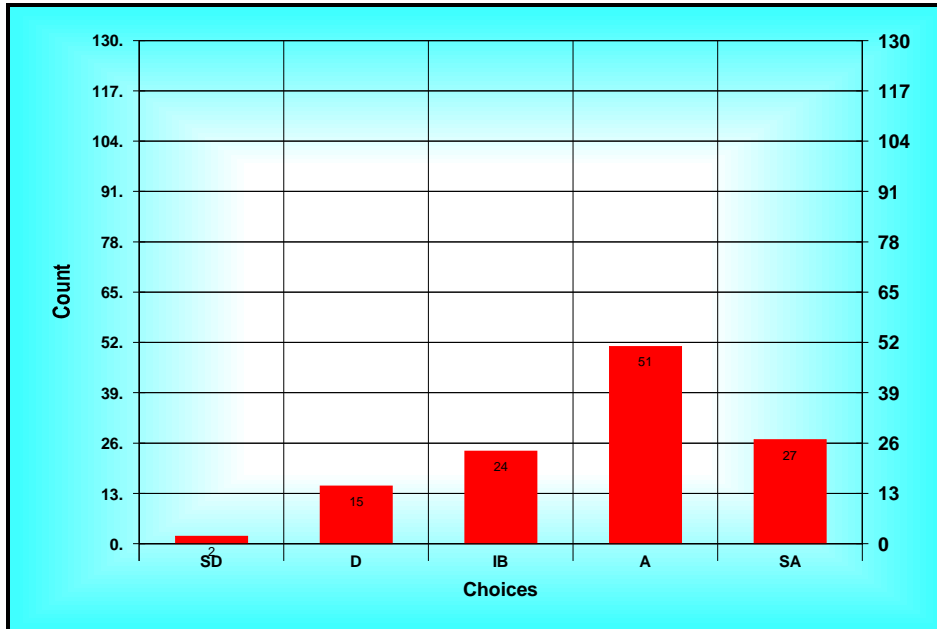
**A) Ballot**

Method: Custom Method  
 Options: Allow Bypass  
 Descriptions: SD = Strongly Disagree D = Disagree IB = In Between A = Agree SA = Strongly Agree

**B) Results Spread**

<i>Choices</i>	<i>Count</i>
<i>SD(1)</i>	<i>2</i>
<i>D(2)</i>	<i>15</i>
<i>IB(3)</i>	<i>24</i>
<i>A(4)</i>	<i>51</i>
<i>SA(5)</i>	<i>27</i>

*Statistics*  
 Total 443  
 Mean A(3.72)  
 Mode A  
 High SA  
 Low SD  
 STD 1.01  
 N 123  
 n 119



**Results Chart (9. The expectations for performance as a department...)**

**10. The informal mentoring is effective.**

**A) Ballot**

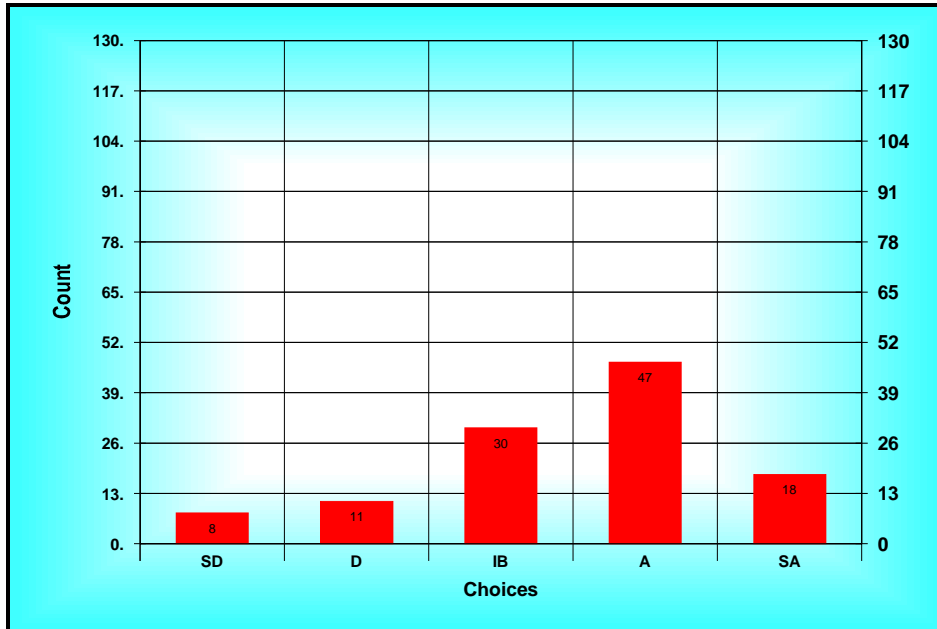
Method: Custom Method  
 Options: Allow Bypass  
 Descriptions: SD = Strongly Disagree D = Disagree IB = In Between A = Agree SA = Strongly Agree

**B) Results Spread**

<i>Choices</i>	<i>Count</i>
<i>SD(1)</i>	<i>8</i>
<i>D(2)</i>	<i>11</i>
<i>IB(3)</i>	<i>30</i>
<i>A(4)</i>	<i>47</i>
<i>SA(5)</i>	<i>18</i>

*Statistics*

*Total* 398  
*Mean* IB(3.49)  
*Mode* A  
*High* SA  
*Low* SD  
*STD* 1.09  
*N* 123  
*n* 114



**Results Chart (10. The informal mentoring is effective.)**

**11. The criteria for tenure are clear.**

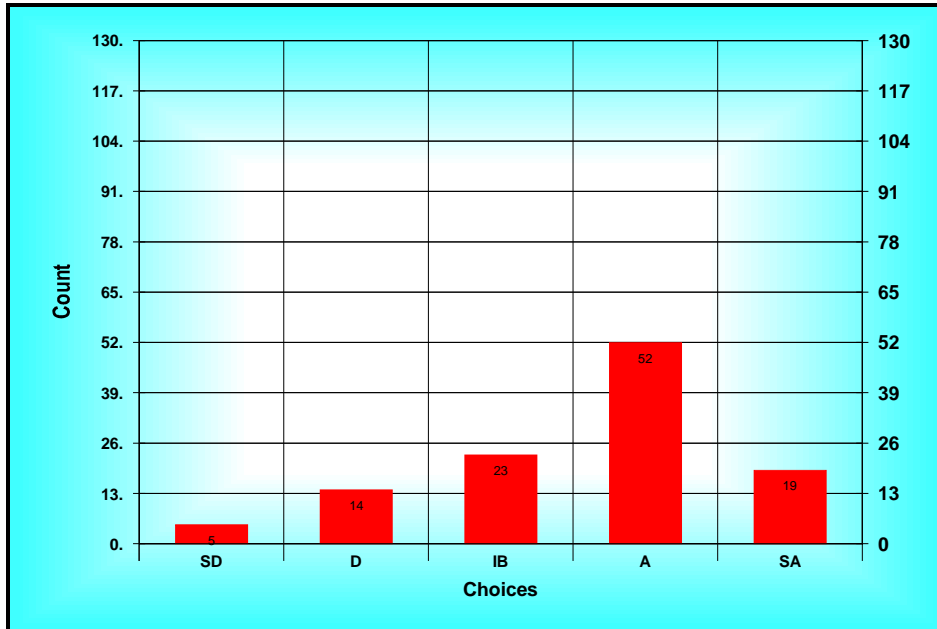
**A) Ballot**

Method: Custom Method  
 Options: Allow Bypass  
 Descriptions: SD = Strongly Disagree D = Disagree IB = In Between A = Agree SA = Strongly Agree

**B) Results Spread**

<i>Choices</i>	<i>Count</i>
<i>SD(1)</i>	<i>5</i>
<i>D(2)</i>	<i>14</i>
<i>IB(3)</i>	<i>23</i>
<i>A(4)</i>	<i>52</i>
<i>SA(5)</i>	<i>19</i>

*Statistics*  
 Total 405  
 Mean A(3.58)  
 Mode A  
 High SA  
 Low SD  
 STD 1.05  
 N 123  
 n 113



**Results Chart (11. The criteria for tenure are clear.)**

**12. There are faculty similar to me in my department.**

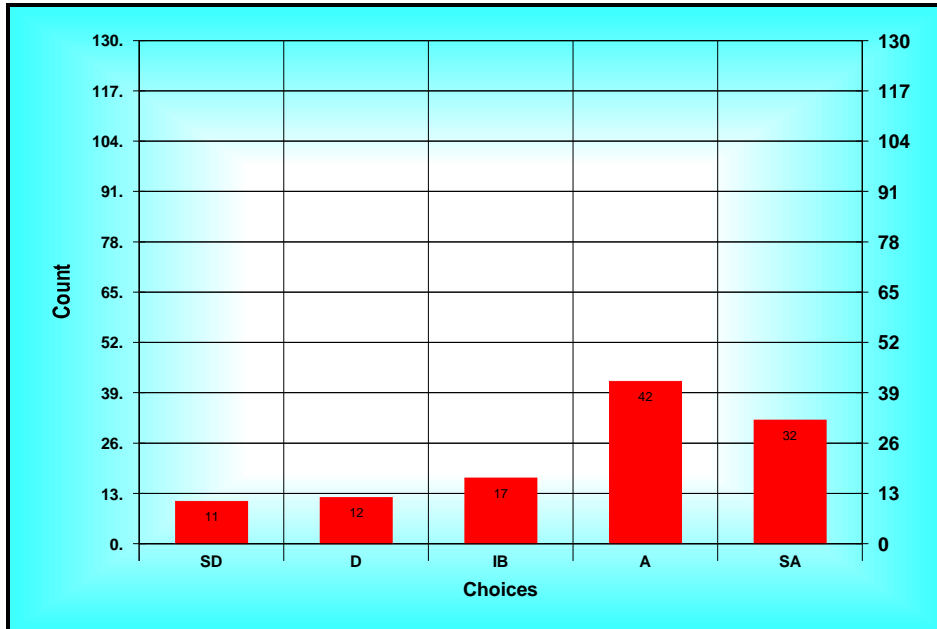
**A) Ballot**

Method: Custom Method  
 Options: Allow Bypass  
 Descriptions: SD = Strongly Disagree D = Disagree IB = In Between A = Agree SA = Strongly Agree

**B) Results Spread**

<i>Choices</i>	<i>Count</i>
<i>SD(1)</i>	<i>11</i>
<i>D(2)</i>	<i>12</i>
<i>IB(3)</i>	<i>17</i>
<i>A(4)</i>	<i>42</i>
<i>SA(5)</i>	<i>32</i>

*Statistics*  
 Total 414  
 Mean A(3.63)  
 Mode A  
 High SA  
 Low SD  
 STD 1.26  
 N 123  
 n 114



**Results Chart (12. There are faculty similar to me in my department.)**

**13. I am dissatisfied with the fairness of my immediate supervisor’s evaluation of my work.**

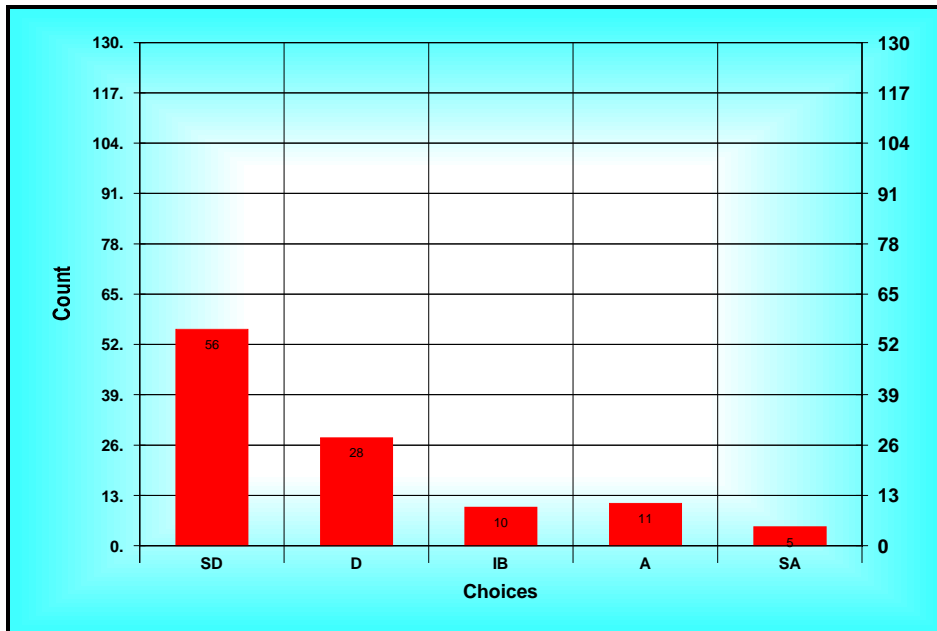
**A) Ballot**

Method: Custom Method  
 Options: Allow Bypass  
 Descriptions: SD = Strongly Disagree D = Disagree IB = In Between A = Agree SA = Strongly Agree

**B) Results Spread**

<i>Choices</i>	<i>Count</i>
<i>SD(1)</i>	<i>56</i>
<i>D(2)</i>	<i>28</i>
<i>IB(3)</i>	<i>10</i>
<i>A(4)</i>	<i>11</i>
<i>SA(5)</i>	<i>5</i>

*Statistics*  
 Total 211  
 Mean D(1.92)  
 Mode SD  
 High SA  
 Low SD  
 STD 1.19  
 N 123  
 n 110



**Results Chart (13. I am dissatisfied with the fairness of my...)**

**14. I am dissatisfied with the quality of computer services.**

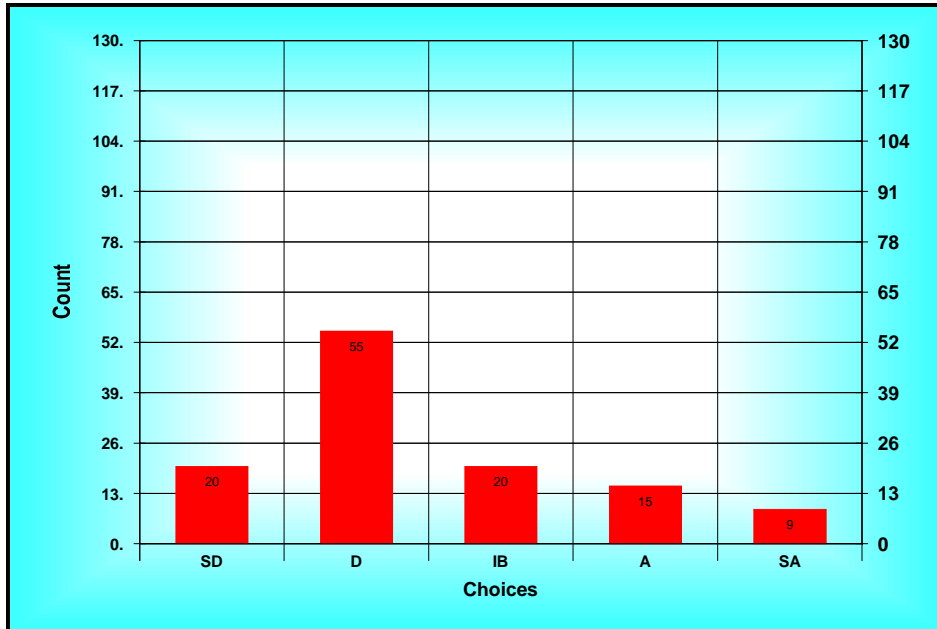
**A) Ballot**

Method: Custom Method  
 Options: Allow Bypass  
 Descriptions: SD = Strongly Disagree D = Disagree IB = In Between A = Agree SA = Strongly Agree

**B) Results Spread**

<i>Choices</i>	<i>Count</i>
<i>SD(1)</i>	20
<i>D(2)</i>	55
<i>IB(3)</i>	20
<i>A(4)</i>	15
<i>SA(5)</i>	9

*Statistics*  
 Total 295  
 Mean D(2.48)  
 Mode D  
 High SA  
 Low SD  
 STD 1.14  
 N 123  
 n 119



**Results Chart (14. I am dissatisfied with the quality of computer...)**

**15. Communication between my chair and me is effective.**

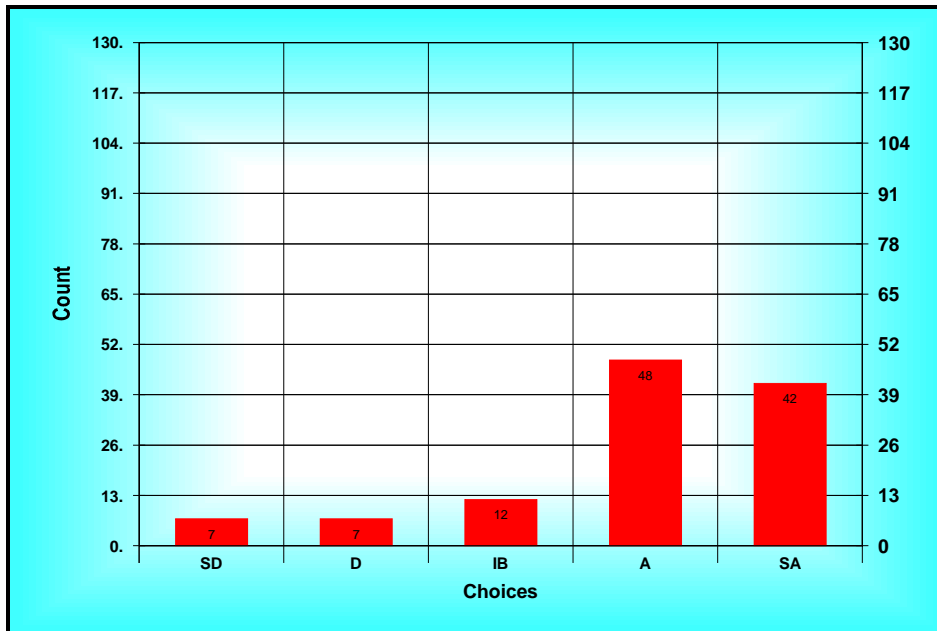
**A) Ballot**

Method: Custom Method  
 Options: Allow Bypass  
 Descriptions: SD = Strongly Disagree D = Disagree IB = In Between A = Agree SA = Strongly Agree

**B) Results Spread**

<i>Choices</i>	<i>Count</i>
<i>SD(1)</i>	7
<i>D(2)</i>	7
<i>IB(3)</i>	12
<i>A(4)</i>	48
<i>SA(5)</i>	42

*Statistics*  
 Total 459  
 Mean A(3.96)  
 Mode A  
 High SA  
 Low SD  
 STD 1.12  
 N 123  
 n 116



**Results Chart (15. Communication between my chair and me is...)**



**16. NDSU is not a good place in which to work.**

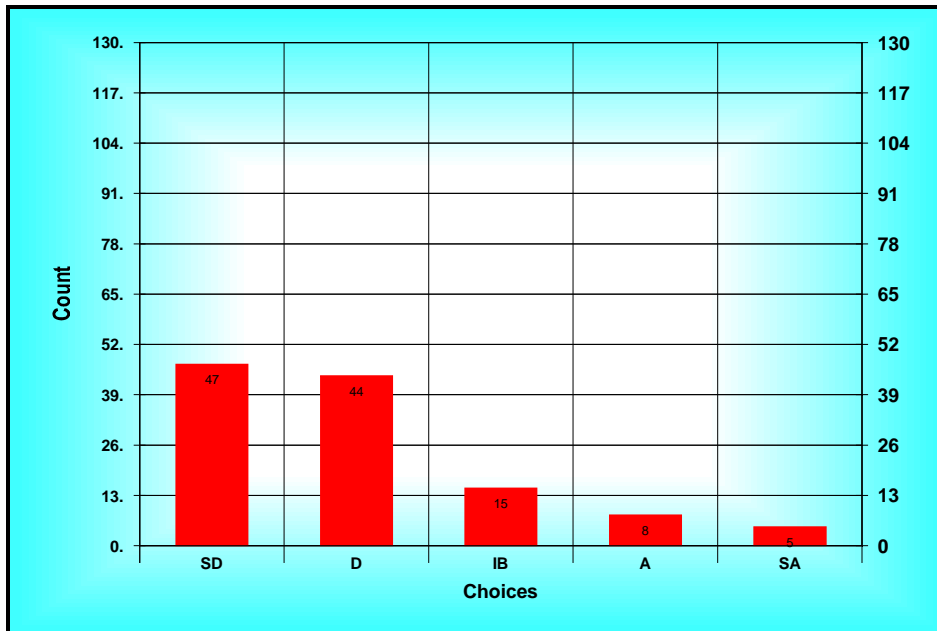
**A) Ballot**

Method: Custom Method  
 Options: Allow Bypass  
 Descriptions: SD = Strongly Disagree D = Disagree IB = In Between A = Agree SA = Strongly Agree

**B) Results Spread**

<i>Choices</i>	<i>Count</i>
<i>SD(1)</i>	<i>47</i>
<i>D(2)</i>	<i>44</i>
<i>IB(3)</i>	<i>15</i>
<i>A(4)</i>	<i>8</i>
<i>SA(5)</i>	<i>5</i>

*Statistics*  
 Total 237  
 Mean D(1.99)  
 Mode SD  
 High SA  
 Low SD  
 STD 1.09  
 N 123  
 n 119



**Results Chart (16. NDSU is not a good place in which to work.)**

**17. If I wanted to advance to a leadership role on campus, I could do so.**

**A) Ballot**

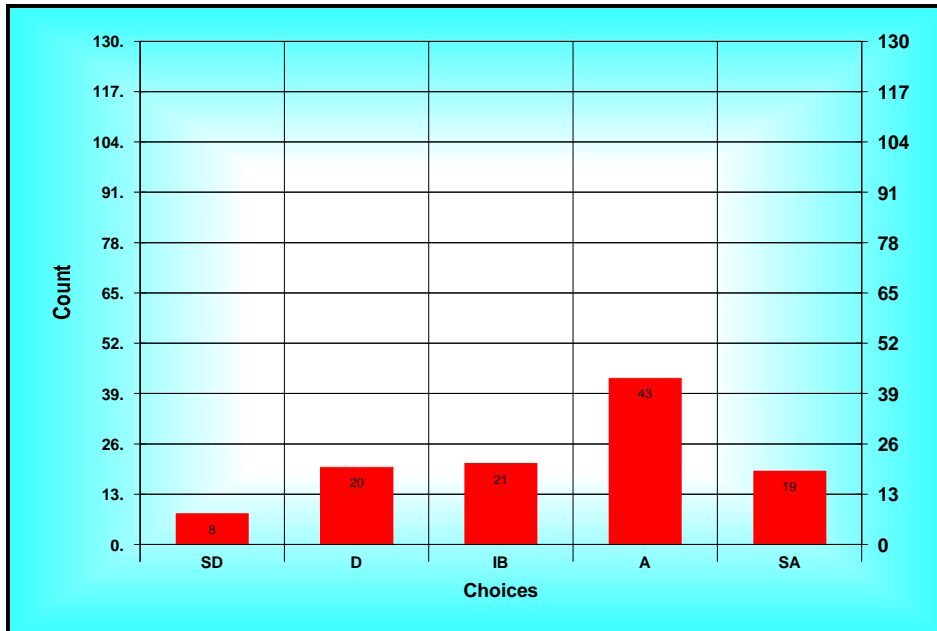
Method: Custom Method  
 Options: Allow Bypass  
 Descriptions: SD = Strongly Disagree D = Disagree IB = In Between A = Agree SA = Strongly Agree

**B) Results Spread**

<i>Choices</i>	<i>Count</i>
<i>SD(1)</i>	<i>8</i>
<i>D(2)</i>	<i>20</i>
<i>IB(3)</i>	<i>21</i>
<i>A(4)</i>	<i>43</i>
<i>SA(5)</i>	<i>19</i>

*Statistics*

*Total 378*  
*Mean IB(3.41)*  
*Mode A*  
*High SA*  
*Low SD*  
*STD 1.18*  
*N 123*  
*n 111*



**Results Chart (17. If I wanted to advance to a leadership role on...)**

**18. I do not feel a sense of unity and cohesion among the faculty in my department.**

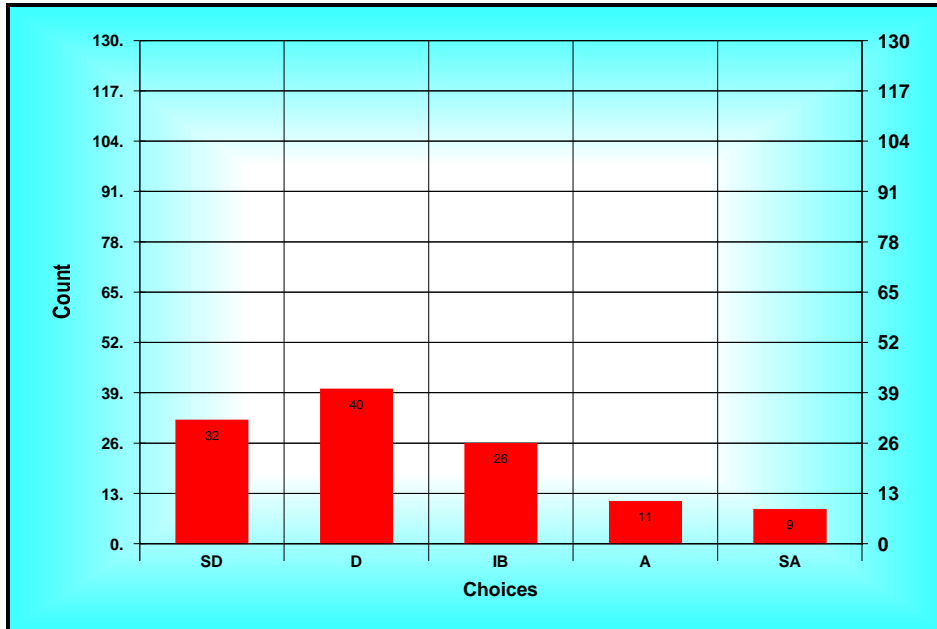
**A) Ballot**

Method: Custom Method  
 Options: Allow Bypass  
 Descriptions: SD = Strongly Disagree D = Disagree IB = In Between A = Agree SA = Strongly Agree

**B) Results Spread**

<i>Choices</i>	<i>Count</i>
<i>SD(1)</i>	<i>32</i>
<i>D(2)</i>	<i>40</i>
<i>IB(3)</i>	<i>26</i>
<i>A(4)</i>	<i>11</i>
<i>SA(5)</i>	<i>9</i>

*Statistics*  
 Total 279  
 Mean D(2.36)  
 Mode D  
 High SA  
 Low SD  
 STD 1.20  
 N 123  
 n 118



**Results Chart (18. I do not feel a sense of unity and cohesion among...)**

**19. The formal mentoring program is effective.**

**A) Ballot**

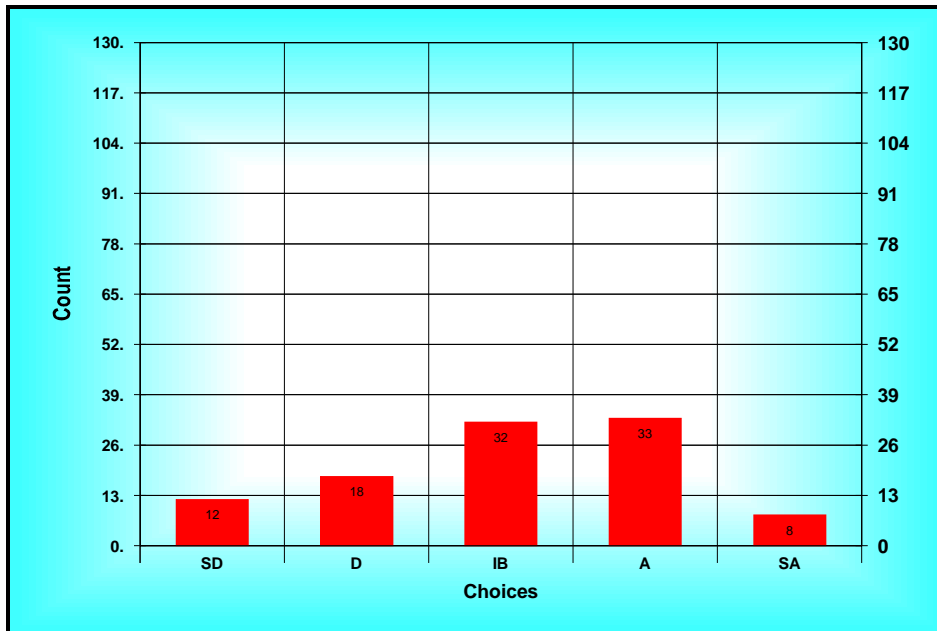
Method: Custom Method  
 Options: Allow Bypass  
 Descriptions: SD = Strongly Disagree D = Disagree IB = In Between A = Agree SA = Strongly Agree

**B) Results Spread**

<i>Choices</i>	<i>Count</i>
<i>SD(1)</i>	<i>12</i>
<i>D(2)</i>	<i>18</i>
<i>IB(3)</i>	<i>32</i>
<i>A(4)</i>	<i>33</i>
<i>SA(5)</i>	<i>8</i>

*Statistics*

*Total 316*  
*Mean IB(3.07)*  
*Mode A*  
*High SA*  
*Low SD*  
*STD 1.13*  
*N 123*  
*n 103*



**Results Chart (19. The formal mentoring program is effective.)**

**20. My department is a good place in which to work.**

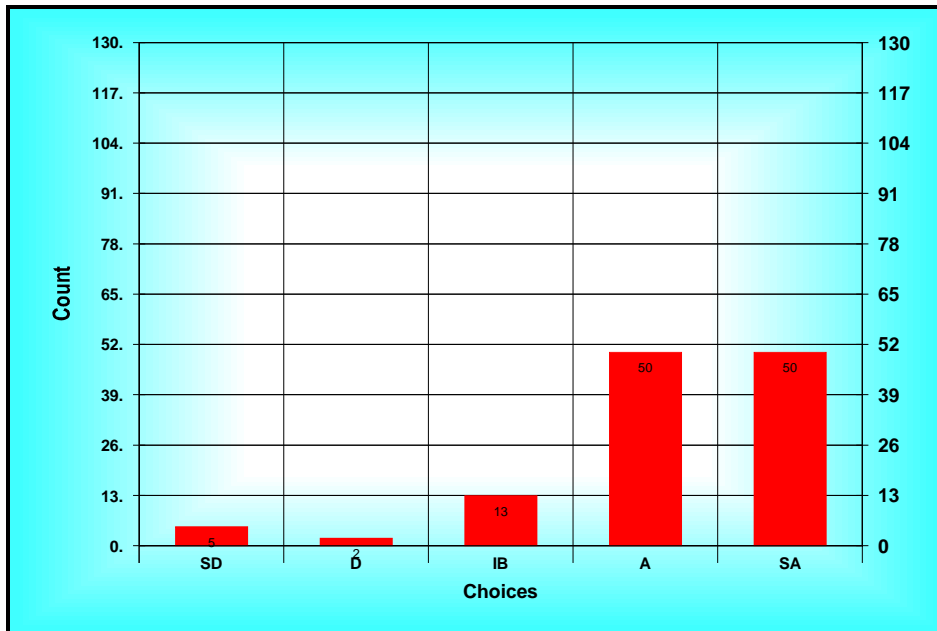
**A) Ballot**

Method: Custom Method  
 Options: Allow Bypass  
 Descriptions: SD = Strongly Disagree D = Disagree IB = In Between A = Agree SA = Strongly Agree

**B) Results Spread**

<i>Choices</i>	<i>Count</i>
<i>SD(1)</i>	5
<i>D(2)</i>	2
<i>IB(3)</i>	13
<i>A(4)</i>	50
<i>SA(5)</i>	50

*Statistics*  
 Total 498  
 Mean A(4.15)  
 Mode ??  
 High SA  
 Low SD  
 STD 0.98  
 N 123  
 n 120



**Results Chart (20. My department is a good place in which to work.)**

**21. I am satisfied with what is expected of me as a researcher.**

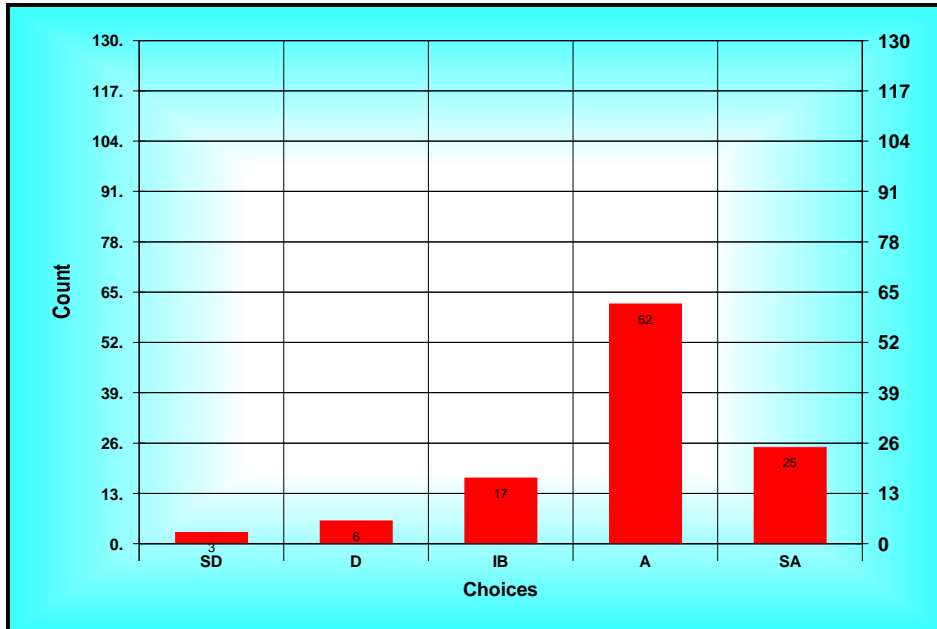
**A) Ballot**

Method: Custom Method  
 Options: Allow Bypass  
 Descriptions: SD = Strongly Disagree D = Disagree IB = In Between A = Agree SA = Strongly Agree

**B) Results Spread**

<i>Choices</i>	<i>Count</i>
<i>SD(1)</i>	<i>3</i>
<i>D(2)</i>	<i>6</i>
<i>IB(3)</i>	<i>17</i>
<i>A(4)</i>	<i>62</i>
<i>SA(5)</i>	<i>25</i>

*Statistics*  
 Total 439  
 Mean A(3.88)  
 Mode A  
 High SA  
 Low SD  
 STD 0.90  
 N 123  
 n 113



**Results Chart (21. I am satisfied with what is expected of me as a...)**

**22. I feel a sense of unity and cohesion among the faculty in my College.**

**A) Ballot**

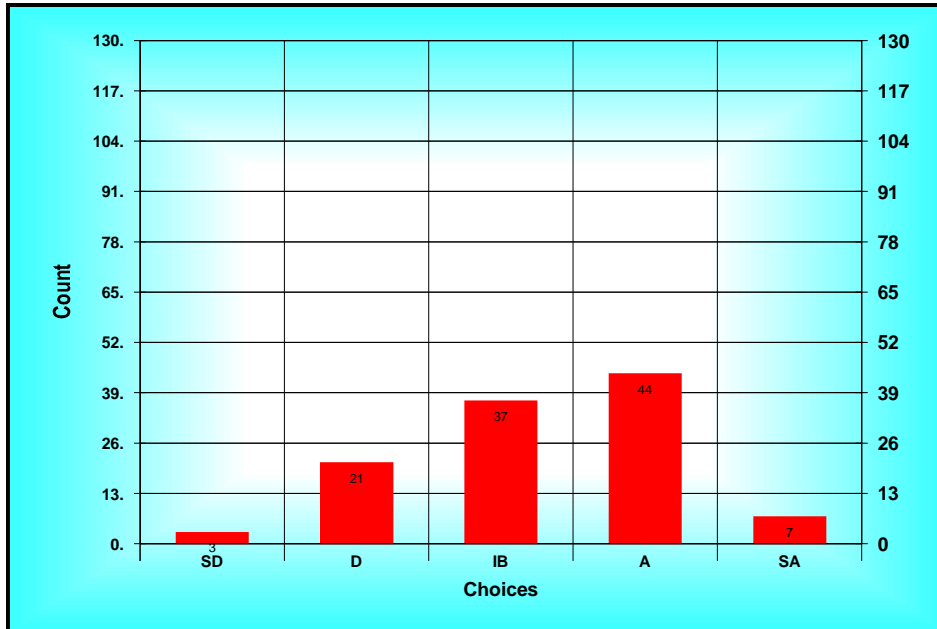
Method: Custom Method  
 Options: Allow Bypass  
 Descriptions: SD = Strongly Disagree D = Disagree IB = In Between A = Agree SA = Strongly Agree

**B) Results Spread**

<i>Choices</i>	<i>Count</i>
<i>SD(1)</i>	<i>3</i>
<i>D(2)</i>	<i>21</i>
<i>IB(3)</i>	<i>37</i>
<i>A(4)</i>	<i>44</i>
<i>SA(5)</i>	<i>7</i>

*Statistics*

*Total* 367  
*Mean* IB(3.28)  
*Mode* A  
*High* SA  
*Low* SD  
*STD* 0.93  
*N* 123  
*n* 112



**Results Chart (22. I feel a sense of unity and cohesion among the...)**

**23. I am satisfied with the amount of time I have to conduct research.**

**A) Ballot**

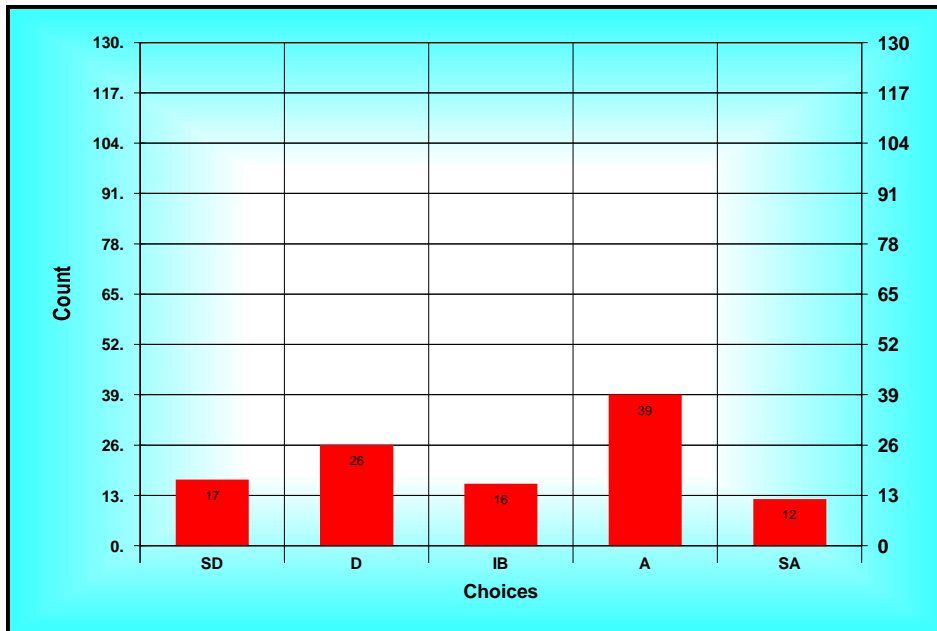
Method: Custom Method  
 Options: Allow Bypass  
 Descriptions: SD = Strongly Disagree D = Disagree IB = In Between A = Agree SA = Strongly Agree

**B) Results Spread**

<i>Choices</i>	<i>Count</i>
<i>SD(1)</i>	<i>17</i>
<i>D(2)</i>	<i>26</i>
<i>IB(3)</i>	<i>16</i>
<i>A(4)</i>	<i>39</i>
<i>SA(5)</i>	<i>12</i>

*Statistics*

*Total 333*  
*Mean IB(3.03)*  
*Mode A*  
*High SA*  
*Low SD*  
*STD 1.29*  
*N 123*  
*n 110*



**Results Chart (23. I am satisfied with the amount of time I have to...)**



**24. I am satisfied with the financial support (travel, equipment, etc) my department gives me.**

**A) Ballot**

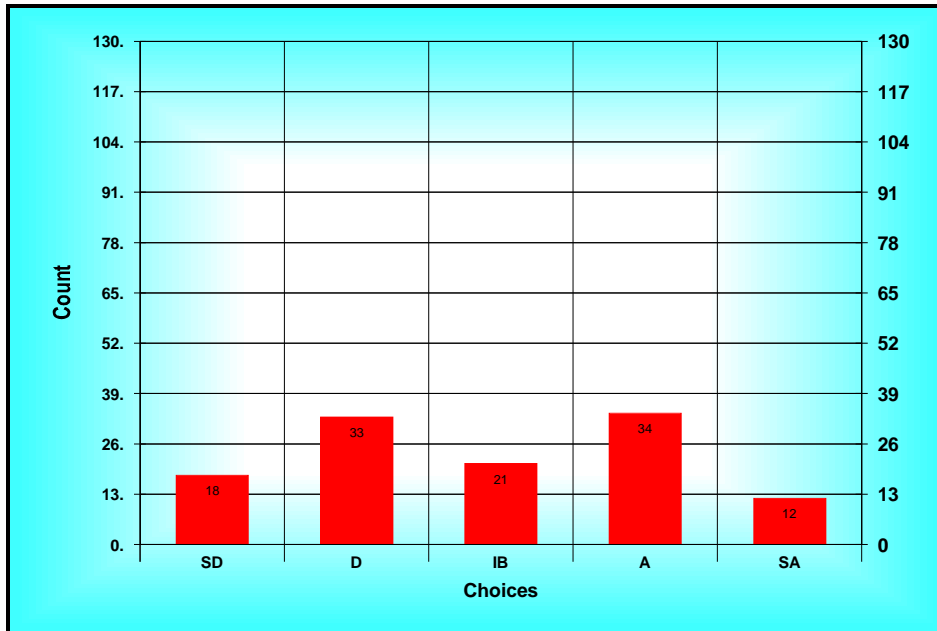
Method: Custom Method  
 Options: Allow Bypass  
 Descriptions: SD = Strongly Disagree D = Disagree IB = In Between A = Agree SA = Strongly Agree

**B) Results Spread**

<i>Choices</i>	<i>Count</i>
<i>SD(1)</i>	<i>18</i>
<i>D(2)</i>	<i>33</i>
<i>IB(3)</i>	<i>21</i>
<i>A(4)</i>	<i>34</i>
<i>SA(5)</i>	<i>12</i>

*Statistics*

*Total 343*  
*Mean IB(2.91)*  
*Mode A*  
*High SA*  
*Low SD*  
*STD 1.26*  
*N 123*  
*n 118*



**Results Chart (24. I am satisfied with the financial support...)**

**25. Departmental (chair and colleagues) do what they can to make any family leave situation and the tenure-track compatible.**

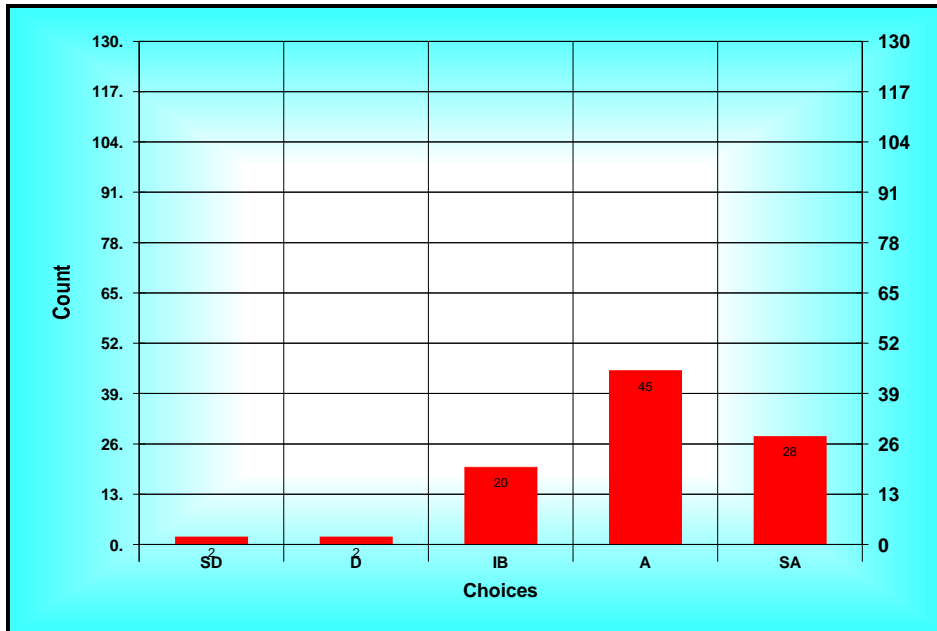
**A) Ballot**

Method: Custom Method  
 Options: Allow Bypass  
 Descriptions: SD = Strongly Disagree D = Disagree IB = In Between A = Agree SA = Strongly Agree

**B) Results Spread**

<i>Choices</i>	<i>Count</i>
<i>SD(1)</i>	2
<i>D(2)</i>	2
<i>IB(3)</i>	20
<i>A(4)</i>	45
<i>SA(5)</i>	28

*Statistics*  
 Total 386  
 Mean A(3.98)  
 Mode A  
 High SA  
 Low SD  
 STD 0.88  
 N 123  
 n 97



**Results Chart (25. Departmental (chair and colleagues) do what they...)**

**26. I am dissatisfied with the balance I am able to strike between professional time and personal/family time.**

**A) Ballot**

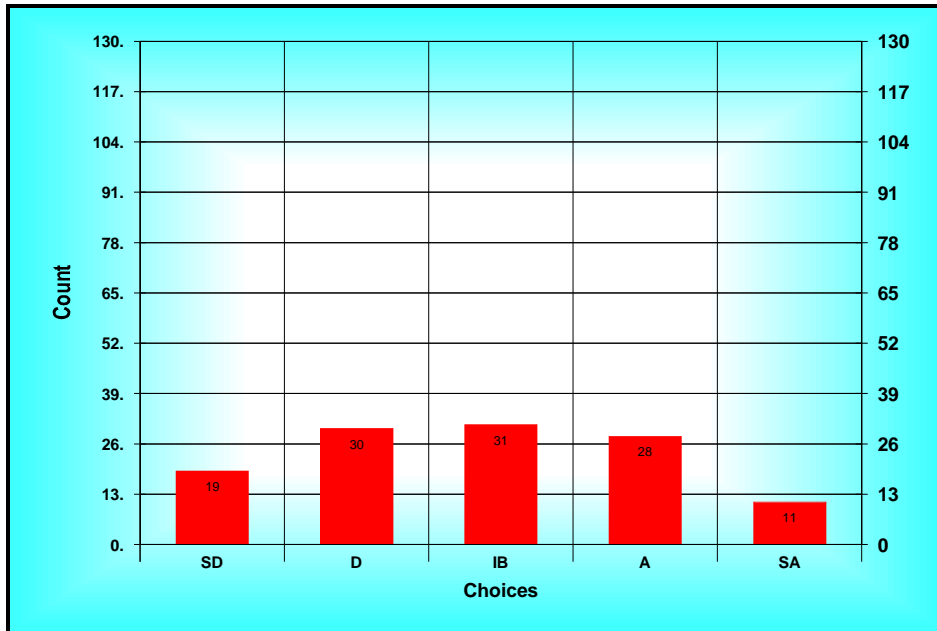
Method: Custom Method  
 Options: Allow Bypass  
 Descriptions: SD = Strongly Disagree D = Disagree IB = In Between A = Agree SA = Strongly Agree

**B) Results Spread**

<i>Choices</i>	<i>Count</i>
<i>SD(1)</i>	<i>19</i>
<i>D(2)</i>	<i>30</i>
<i>IB(3)</i>	<i>31</i>
<i>A(4)</i>	<i>28</i>
<i>SA(5)</i>	<i>11</i>

*Statistics*

*Total* 339  
*Mean* IB(2.85)  
*Mode* IB  
*High* SA  
*Low* SD  
*STD* 1.22  
*N* 123  
*n* 119



**Results Chart (26. I am dissatisfied with the balance I am able to...)**

**27. There are faculty similar to me in my college.**

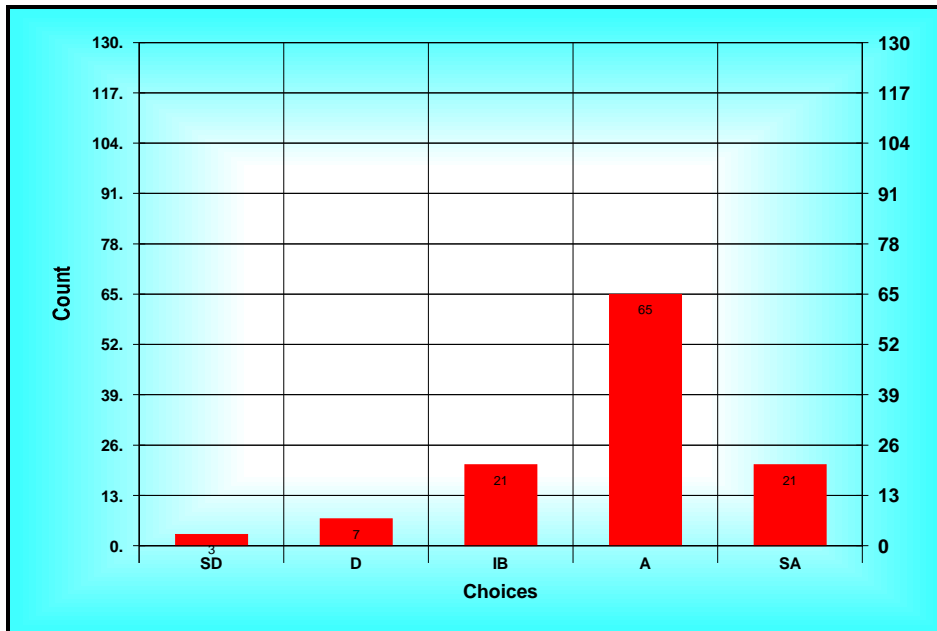
**A) Ballot**

Method: Custom Method  
 Options: Allow Bypass  
 Descriptions: SD = Strongly Disagree D = Disagree IB = In Between A = Agree SA = Strongly Agree

**B) Results Spread**

<i>Choices</i>	<i>Count</i>
<i>SD(1)</i>	<i>3</i>
<i>D(2)</i>	<i>7</i>
<i>IB(3)</i>	<i>21</i>
<i>A(4)</i>	<i>65</i>
<i>SA(5)</i>	<i>21</i>

*Statistics*  
 Total 445  
 Mean A(3.80)  
 Mode A  
 High SA  
 Low SD  
 STD 0.89  
 N 123  
 n 117



**Results Chart (27. There are faculty similar to me in my college.)**

**28. I am satisfied with the professional/collegial support my department gives me.**

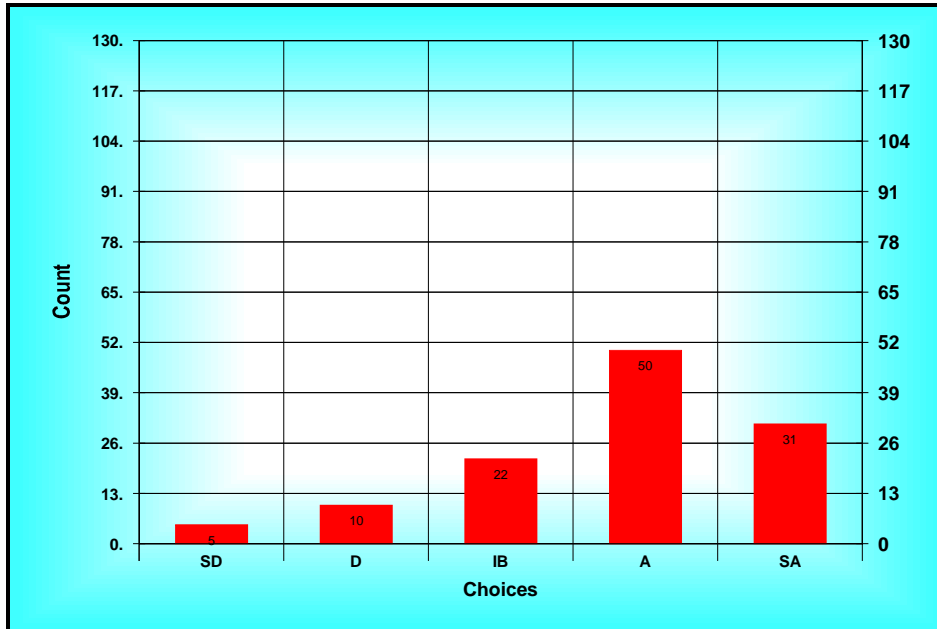
**A) Ballot**

Method: Custom Method  
 Options: Allow Bypass  
 Descriptions: SD = Strongly Disagree D = Disagree IB = In Between A = Agree SA = Strongly Agree

**B) Results Spread**

<i>Choices</i>	<i>Count</i>
<i>SD(1)</i>	<i>5</i>
<i>D(2)</i>	<i>10</i>
<i>IB(3)</i>	<i>22</i>
<i>A(4)</i>	<i>50</i>
<i>SA(5)</i>	<i>31</i>

*Statistics*  
 Total 446  
 Mean A(3.78)  
 Mode A  
 High SA  
 Low SD  
 STD 1.06  
 N 123  
 n 118



**Results Chart (28. I am satisfied with the professional/collegial...)**

**29. I do not like the Fargo community.**

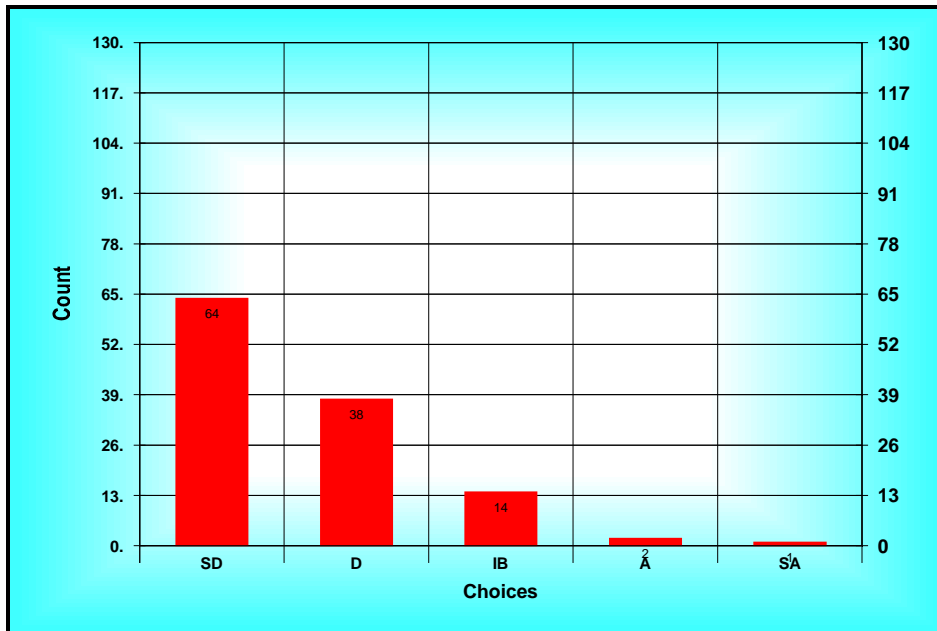
**A) Ballot**

Method: Custom Method  
 Options: Allow Bypass  
 Descriptions: SD = Strongly Disagree D = Disagree IB = In Between A = Agree SA = Strongly Agree

**B) Results Spread**

<i>Choices</i>	<i>Count</i>
<i>SD(1)</i>	<i>64</i>
<i>D(2)</i>	<i>38</i>
<i>IB(3)</i>	<i>14</i>
<i>A(4)</i>	<i>2</i>
<i>SA(5)</i>	<i>1</i>

*Statistics*  
 Total 195  
 Mean D(1.64)  
 Mode SD  
 High SA  
 Low SD  
 STD 0.82  
 N 123  
 n 119



**Results Chart (29. I do not like the Fargo community.)**

**30. There are sufficient opportunities to collaborate on research with other faculty at NDSU.**

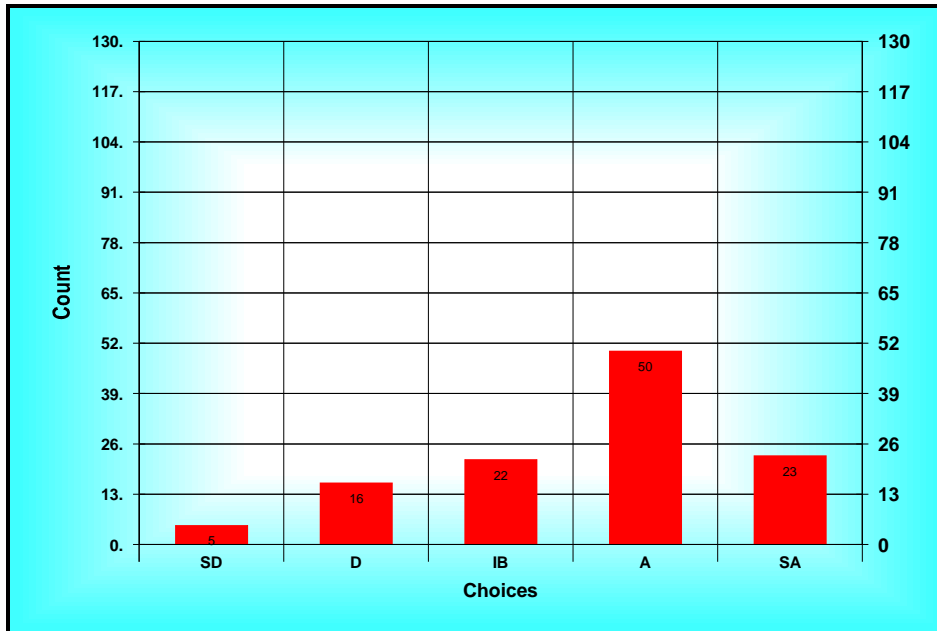
**A) Ballot**

Method: Custom Method  
 Options: Allow Bypass  
 Descriptions: SD = Strongly Disagree D = Disagree IB = In Between A = Agree SA = Strongly Agree

**B) Results Spread**

<i>Choices</i>	<i>Count</i>
<i>SD(1)</i>	<i>5</i>
<i>D(2)</i>	<i>16</i>
<i>IB(3)</i>	<i>22</i>
<i>A(4)</i>	<i>50</i>
<i>SA(5)</i>	<i>23</i>

*Statistics*  
 Total 418  
 Mean A(3.60)  
 Mode A  
 High SA  
 Low SD  
 STD 1.09  
 N 123  
 n 116



**Results Chart (30. There are sufficient opportunities to collaborate...)**

**31. I am satisfied with my salary at NDSU.**

**A) Ballot**

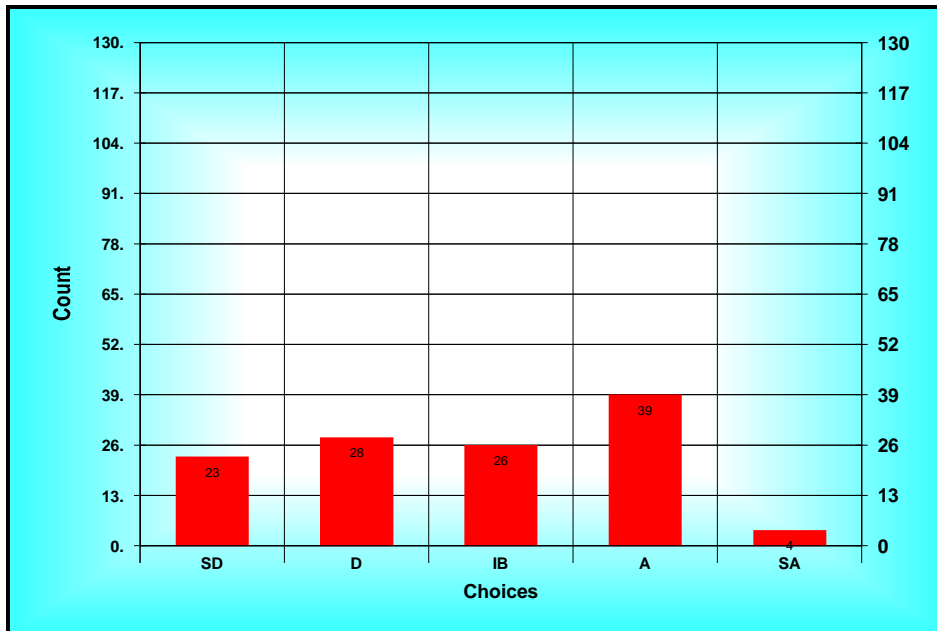
Method: Custom Method  
 Options: Allow Bypass  
 Descriptions: SD = Strongly Disagree D = Disagree IB = In Between A = Agree SA = Strongly Agree

**B) Results Spread**

<i>Choices</i>	<i>Count</i>
<i>SD(1)</i>	23
<i>D(2)</i>	28
<i>IB(3)</i>	26
<i>A(4)</i>	39
<i>SA(5)</i>	4

*Statistics*

Total 333  
 Mean IB(2.78)  
 Mode A  
 High SA  
 Low SD  
 STD 1.19  
 N 123  
 n 120



**Results Chart (31. I am satisfied with my salary at NDSU.)**



**32. I am satisfied with the quality of NDSU’s graduate students.**

**A) Ballot**

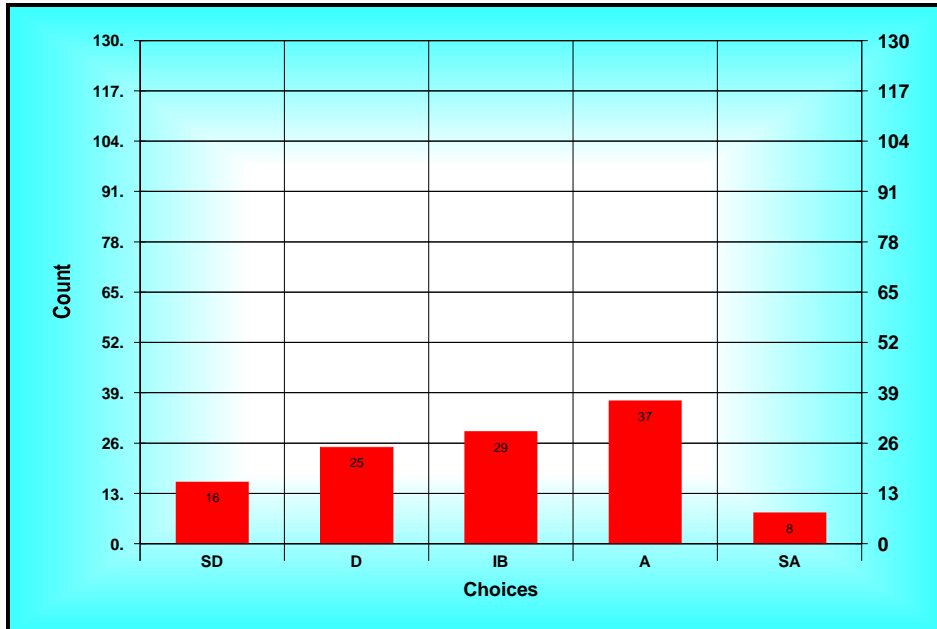
Method: Custom Method  
 Options: Allow Bypass  
 Descriptions: SD = Strongly Disagree D = Disagree IB = In Between A = Agree SA = Strongly Agree

**B) Results Spread**

<i>Choices</i>	<i>Count</i>
<i>SD(1)</i>	<i>16</i>
<i>D(2)</i>	<i>25</i>
<i>IB(3)</i>	<i>29</i>
<i>A(4)</i>	<i>37</i>
<i>SA(5)</i>	<i>8</i>

*Statistics*

*Total 341*  
*Mean IB(2.97)*  
*Mode A*  
*High SA*  
*Low SD*  
*STD 1.18*  
*N 123*  
*n 115*



**Results Chart (32. I am satisfied with the quality of NDSU’ss...)**

**33. I am satisfied with the quality of NDSU’s undergraduate students.**

**A) Ballot**

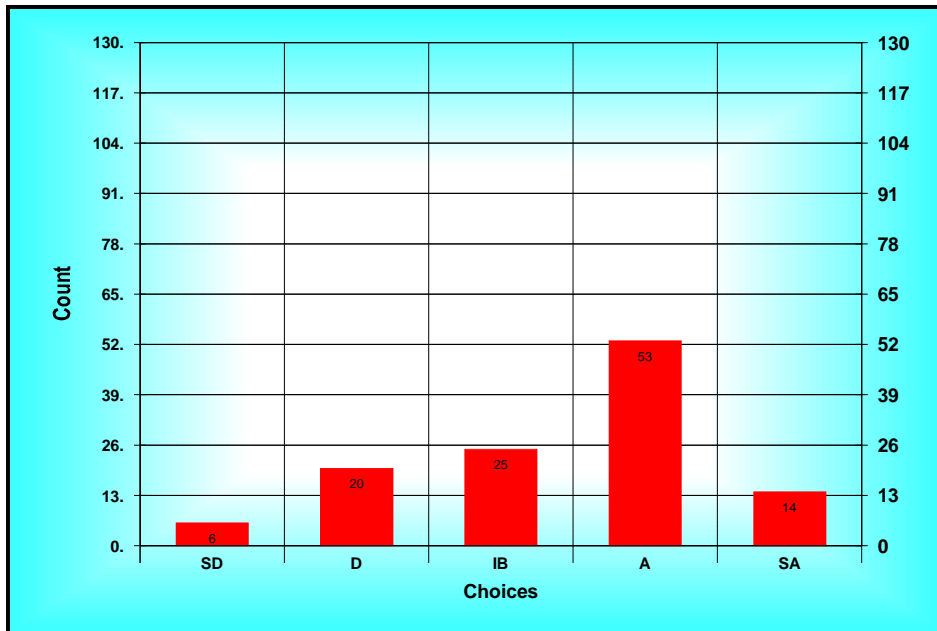
Method: Custom Method  
 Options: Allow Bypass  
 Descriptions: SD = Strongly Disagree D = Disagree IB = In Between A = Agree SA = Strongly Agree

**B) Results Spread**

<i>Choices</i>	<i>Count</i>
<i>SD(1)</i>	<i>6</i>
<i>D(2)</i>	<i>20</i>
<i>IB(3)</i>	<i>25</i>
<i>A(4)</i>	<i>53</i>
<i>SA(5)</i>	<i>14</i>

*Statistics*

*Total 403*  
*Mean IB(3.42)*  
*Mode A*  
*High SA*  
*Low SD*  
*STD 1.06*  
*N 123*  
*n 118*



**Results Chart (33. I am satisfied with the quality of NDSU’s...)**

**34. I am satisfied with the quality of NDSU’s library support and services.**

**A) Ballot**

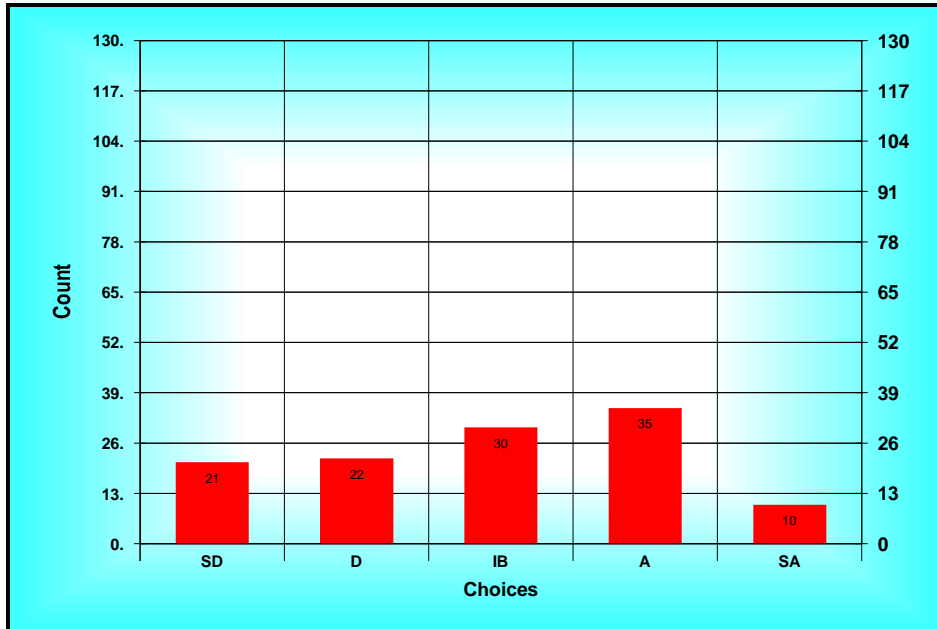
Method: Custom Method  
 Options: Allow Bypass  
 Descriptions: SD = Strongly Disagree D = Disagree IB = In Between A = Agree SA = Strongly Agree

**B) Results Spread**

<i>Choices</i>	<i>Count</i>
<i>SD(1)</i>	<i>21</i>
<i>D(2)</i>	<i>22</i>
<i>IB(3)</i>	<i>30</i>
<i>A(4)</i>	<i>35</i>
<i>SA(5)</i>	<i>10</i>

*Statistics*

*Total* 345  
*Mean* IB(2.92)  
*Mode* A  
*High* SA  
*Low* SD  
*STD* 1.24  
*N* 123  
*n* 118



**Results Chart (34. I am satisfied with the quality of NDSU’s ...)**

**35. My job at NDSU is stressful due to the difficulty in balancing work and family.**

**A) Ballot**

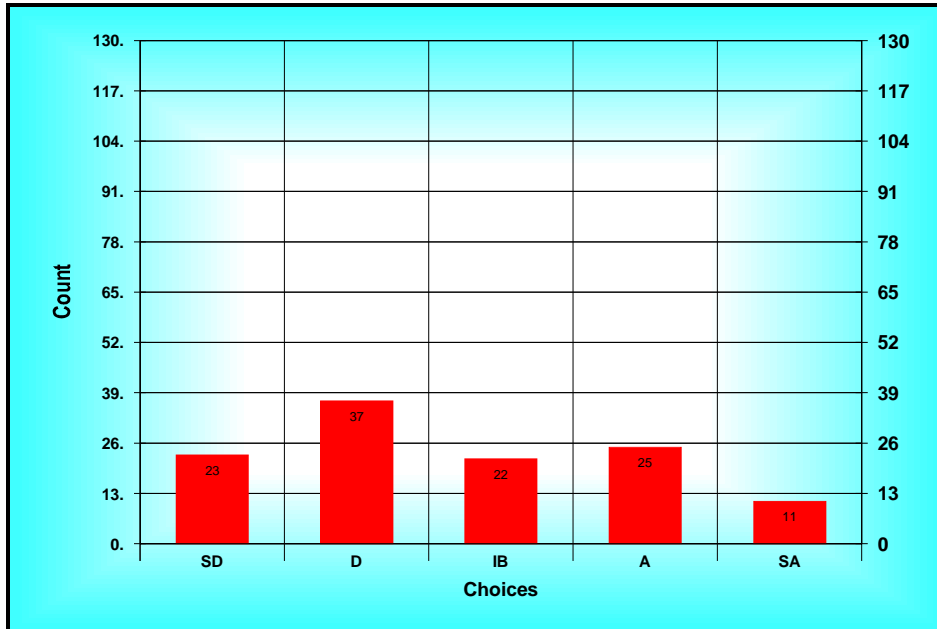
Method: Custom Method  
 Options: Allow Bypass  
 Descriptions: SD = Strongly Disagree D = Disagree IB = In Between A = Agree SA = Strongly Agree

**B) Results Spread**

<i>Choices</i>	<i>Count</i>
<i>SD(1)</i>	<i>23</i>
<i>D(2)</i>	<i>37</i>
<i>IB(3)</i>	<i>22</i>
<i>A(4)</i>	<i>25</i>
<i>SA(5)</i>	<i>11</i>

*Statistics*

*Total 318*  
*Mean IB(2.69)*  
*Mode D*  
*High SA*  
*Low SD*  
*STD 1.26*  
*N 123*  
*n 118*



**Results Chart (35. My job at NDSU is stressful due to the difficulty...)**