

**For current faculty (Survey)**

**Survey Results**

1 filter(s) defined

Total Number of Respondents (N): 109 of 237

**1. Sex:**

**A) Ballot**

Method: Multiple Selection  
Options: Allow Bypass  
Maximum Selections: [1]  
Descriptions: Please choose one  
Number of Choices: 2

**B) Results Spread**

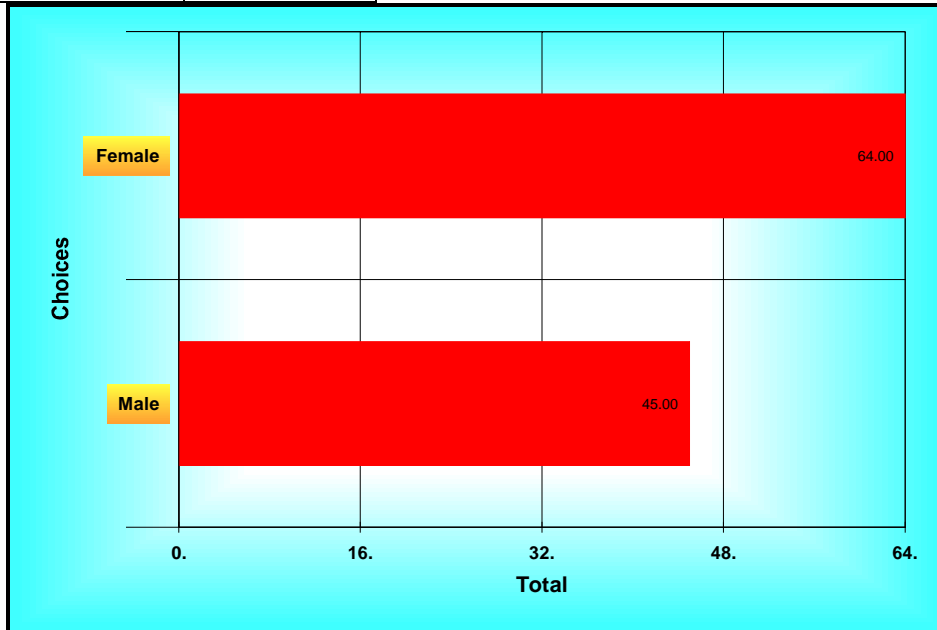
*Statistics*

Total 2.00

N 109

*Table Sorted By Total*

Choices	Total
Female	64
Male	45



**Results Chart (1. Sex:)**

**2. Rank at NDSU:**

**A) Ballot**

Method: Multiple Selection  
 Options: Allow Bypass  
           Enter Text for Last Choice  
           Maximum Selections: [1]  
 Descriptions: Please choose one  
 Number of Choices: 4

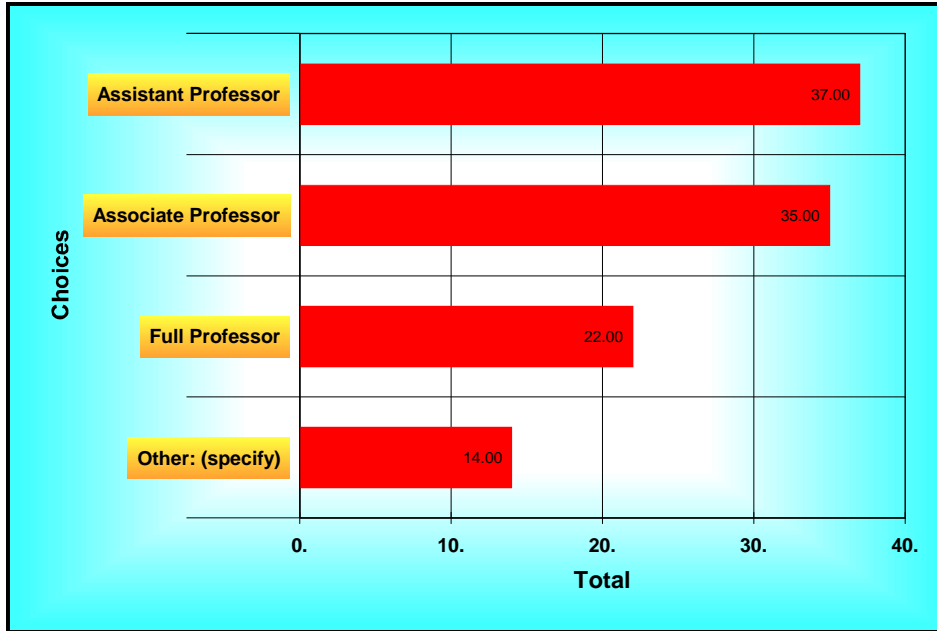
**B) Results Spread**

*Statistics*  
*Total 4.00*  
*N 109*  
*Table Sorted By Total*

**C) Text Responses**

1. lecturer
2. lecturer
3. senior lecturer
4. Lecturer
5. Assistant professor but part-time, non-tenure track
6. Emeritus
7. Administrator-many of the questions below do not apply to me
8. lecturer
9. Senior Lecturer
10. Senior Lecturer
11. Senior Lecturer
12. Lecturer
13. lecturer
14. non-tenure track

Choices	Total
Assistant Professor	37
Associate Professor	35
Full Professor	22
Other: (specify)	14



**Results Chart (2. Rank at NDSU:)**

**3. Number of years at that rank:**

**A) Ballot**

Method: Multiple Selection  
 Options: Allow Bypass  
 Maximum Selections: [1]  
 Descriptions: Please choose one  
 Number of Choices: 7

**B) Results Spread**

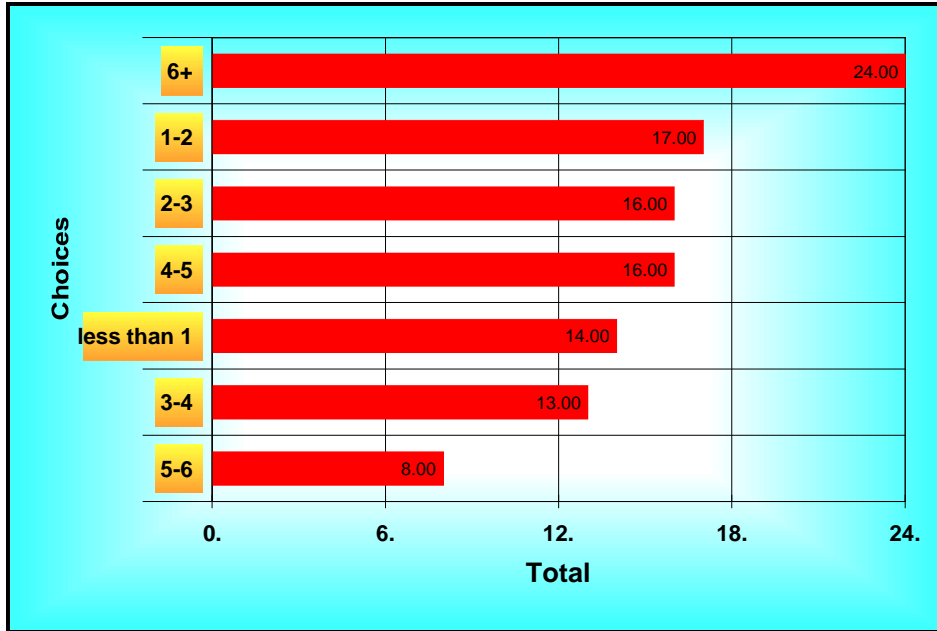
*Statistics*

*Total 7.00*

*N 109*

*Table Sorted By Total*

Choices	Total
6+	24
1-2	17
2-3	16
4-5	16
less than 1	14
3-4	13
5-6	8



**Results Chart (3. Number of years at that rank:)**

Filter- None of the above; I was not in Science, Math, ...

**4. In what area is your appointment?**

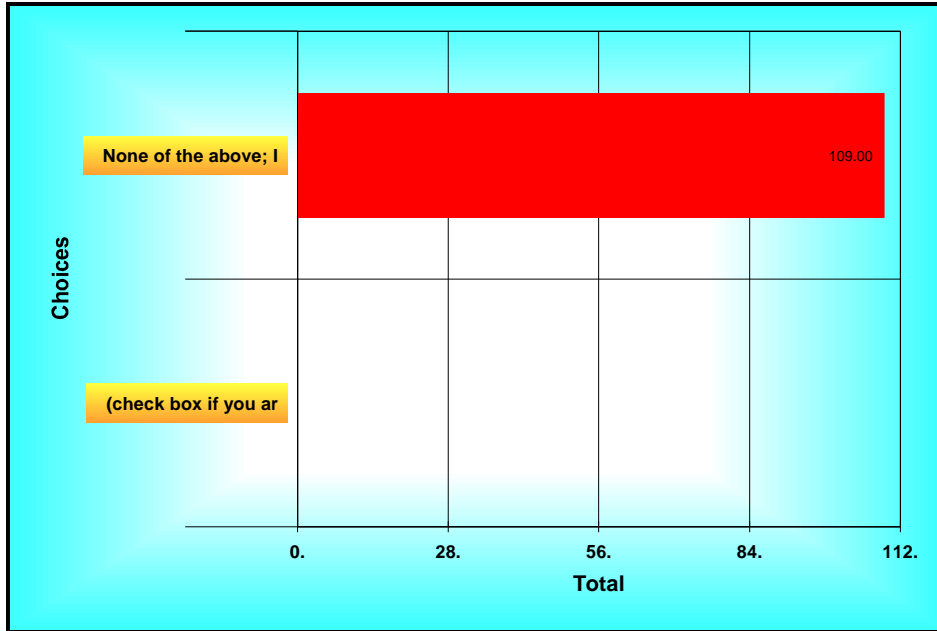
**A) Ballot**

Method: Multiple Selection  
 Options: Allow Bypass  
 Maximum Selections: [1]  
 Descriptions: Please choose one  
 Number of Choices: 2

**B) Results Spread**

*Statistics*  
 Total 1.00  
 N 109  
 Table Sorted By Total

Choices	Total
None of the above; I was not in Science, Math, Eng	109
(check box if you are in a Science, Math, Engineer	0



**Results Chart (4. In what area is your appointment? )**

**5. Current relationship status:**

**A) Ballot**

Method: Multiple Selection  
 Options: Allow Bypass  
 Enter Text for Last Choice  
 Maximum Selections: [1]  
 Descriptions: Please choose one  
 Number of Choices: 8

**B) Results Spread**

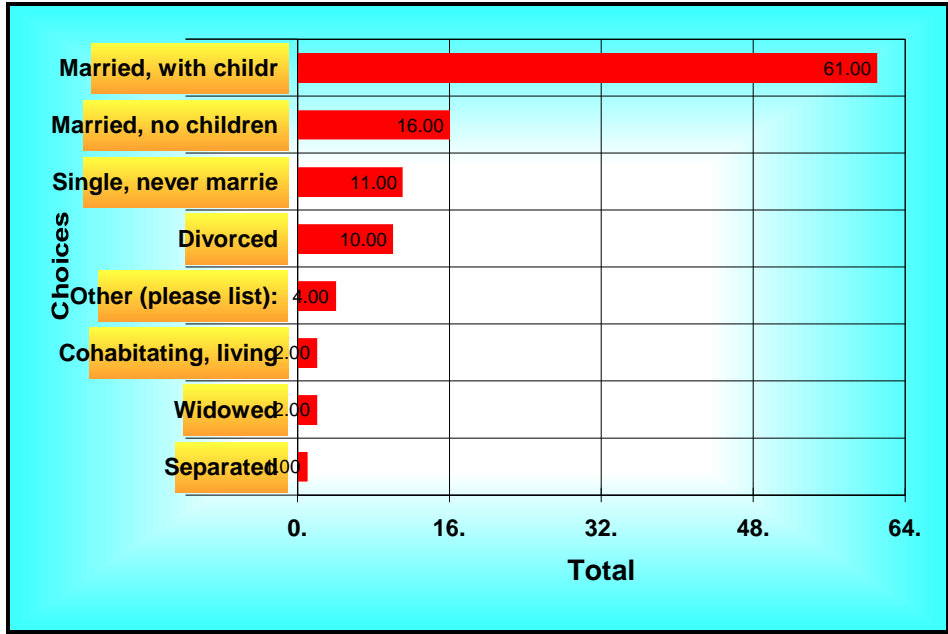
*Statistics*  
 Total 8.00  
 N 109

*Table Sorted By Total*

**C) Text Responses**

1. Single, with children :)
2. Domestic Partner
3. Divorced with children
4. No longer cohabitating, or living with my our partner in an intimate relationship

Choices	Total
Married, with children	61
Married, no children	16
Single, never married	11
Divorced	10
Other (please list):	4
Cohabitating, living with your partner in an intim	2
Widowed	2
Separated	1



**Results Chart (5. Current relationship status: )**

**6. The tenure process is clear.**

**A) Ballot**

Method: Custom Method

Options: Allow Bypass

Descriptions: SD = Strongly Disagree D = Disagree IB = In Between A = Agree SA = Strongly Agree

**B) Results Spread**

<i>Choices</i>	<i>Count</i>
<i>SD(1)</i>	3
<i>D(2)</i>	7
<i>IB(3)</i>	16
<i>A(4)</i>	50
<i>SA(5)</i>	22

*Statistics*

*Total* 375

*Mean* A(3.83)

*Mode* A

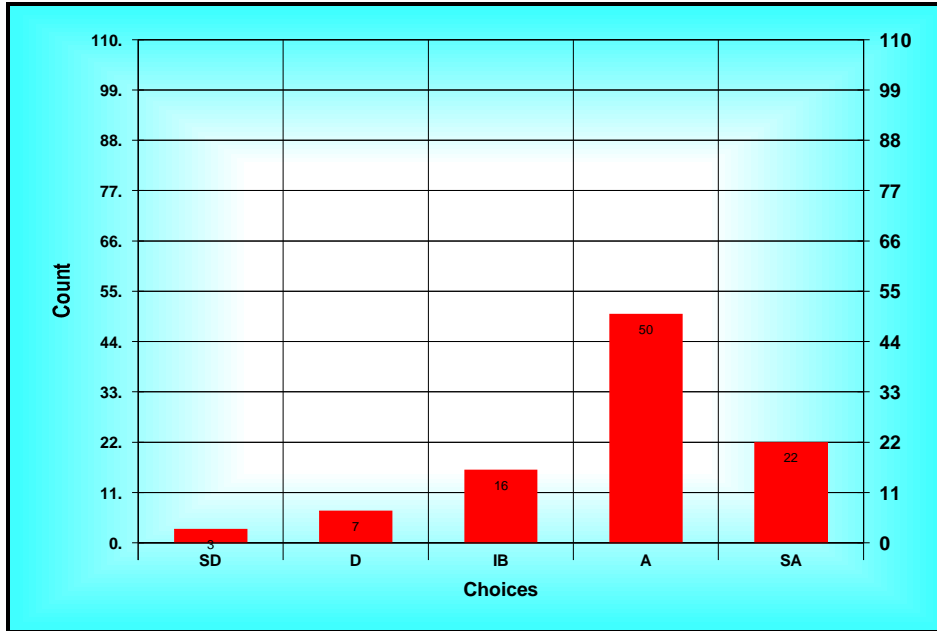
*High* SA

*Low* SD

*STD* 0.96

*N* 109

*n* 98



**Results Chart (6. The tenure process is clear.)**

**7. I am satisfied with the number of courses I taught.**

**A) Ballot**

Method: Custom Method

Options: Allow Bypass

Descriptions: SD = Strongly Disagree D = Disagree IB = In Between A = Agree SA = Strongly Agree

**B) Results Spread**

<i>Choices</i>	<i>Count</i>
<i>SD(1)</i>	<i>1</i>
<i>D(2)</i>	<i>10</i>
<i>IB(3)</i>	<i>20</i>
<i>A(4)</i>	<i>43</i>
<i>SA(5)</i>	<i>23</i>

*Statistics*

*Total 368*

*Mean A(3.79)*

*Mode A*

*High SA*

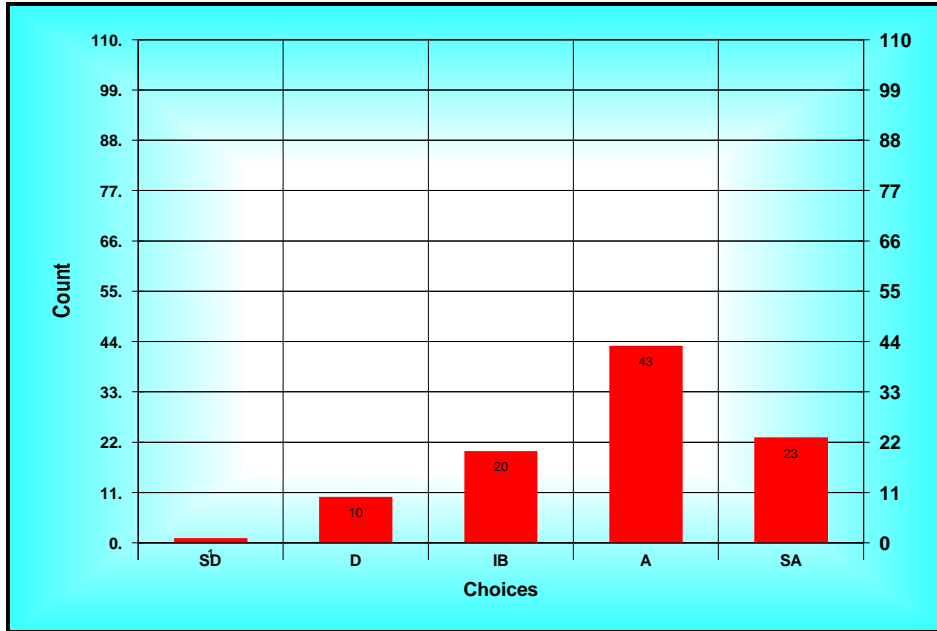
*Low SD*

*STD 0.96*

*N 109*

*n 97*





**Results Chart (7. I am satisfied with the number of courses I...)**

**8. Communication within my department is not effective.**

**A) Ballot**

Method: Custom Method

Options: Allow Bypass

Descriptions: SD = Strongly Disagree D = Disagree IB = In Between A = Agree SA = Strongly Agree

**B) Results Spread**

Choices	Count
SD(1)	24
D(2)	35
IB(3)	20
A(4)	13
SA(5)	11

*Statistics*

Total 261

Mean IB(2.53)

Mode D

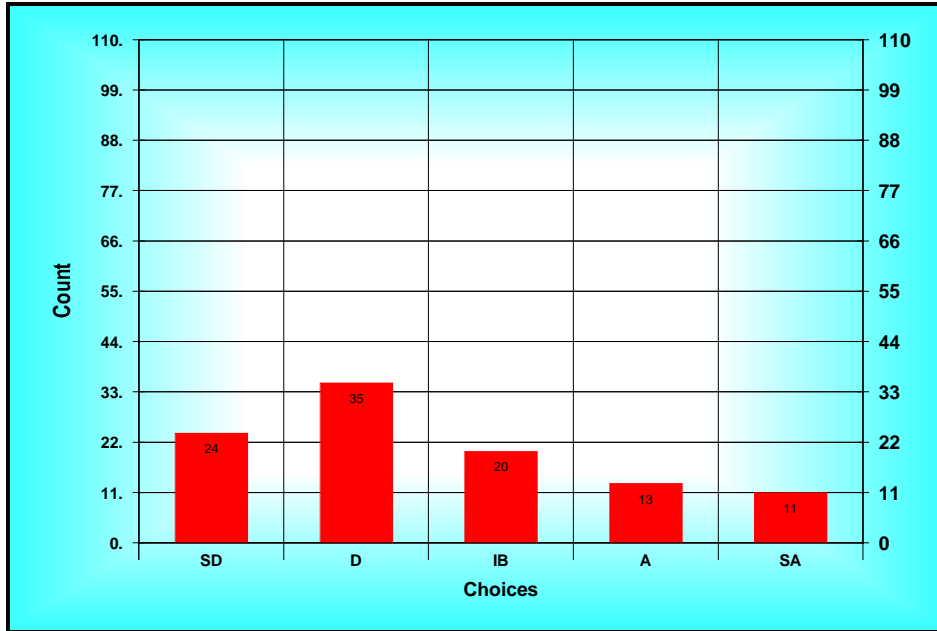
High SA

Low SD

STD 1.27

N 109

n 103



**Results Chart (8. Communication within my department is not...)**

**9. The expectations for performance as a department colleague are clear.**

**A) Ballot**

Method: Custom Method

Options: Allow Bypass

Descriptions: SD = Strongly Disagree D = Disagree IB = In Between A = Agree SA = Strongly Agree

**B) Results Spread**

Choices	Count
SD(1)	5
D(2)	16
IB(3)	20
A(4)	47
SA(5)	18

*Statistics*

Total 375

Mean A(3.54)

Mode A

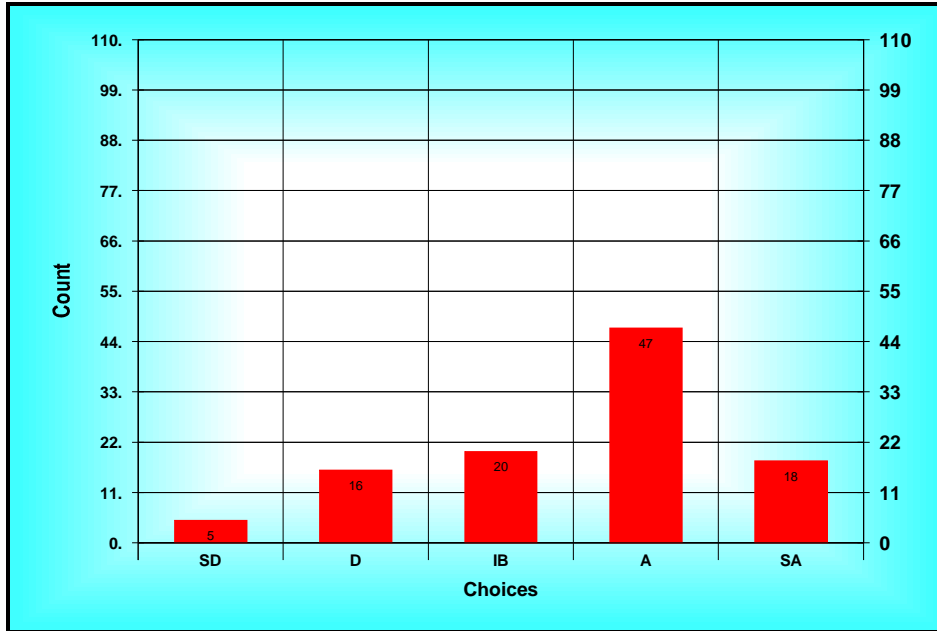
High SA

Low SD

STD 1.09

N 109

n 106



**Results Chart (9. The expectations for performance as a department...)**

**10. The informal mentoring is effective.**

**A) Ballot**

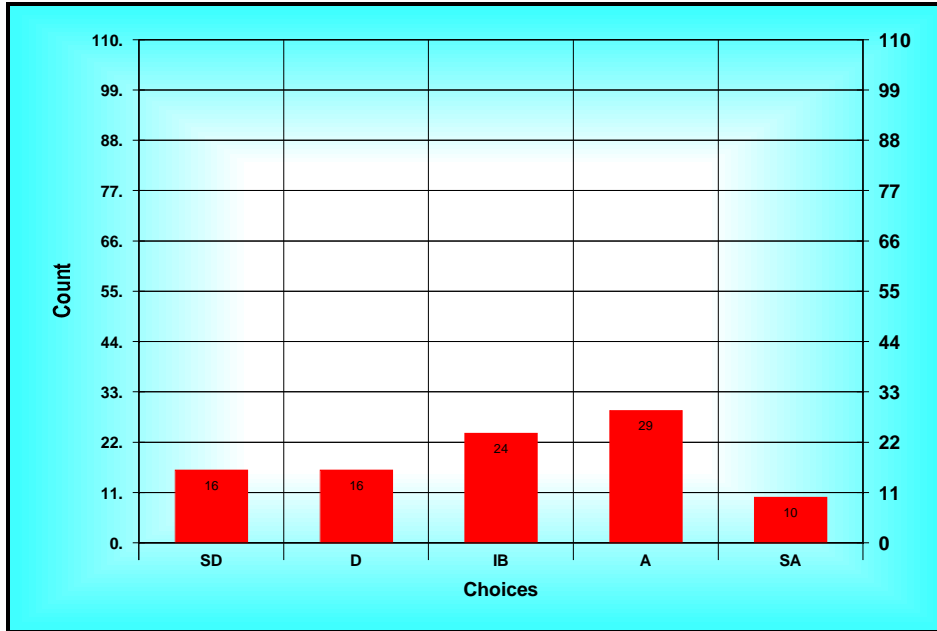
Method: Custom Method  
 Options: Allow Bypass  
 Descriptions: SD = Strongly Disagree D = Disagree IB = In Between A = Agree SA = Strongly Agree

**B) Results Spread**

Choices	Count
SD(1)	16
D(2)	16
IB(3)	24
A(4)	29
SA(5)	10

*Statistics*

Total 286  
 Mean IB(3.01)  
 Mode A  
 High SA  
 Low SD  
 STD 1.26  
 N 109  
 n 95



**Results Chart (10. The informal mentoring is effective.)**

**11. The criteria for tenure are clear.**

**A) Ballot**

Method: Custom Method

Options: Allow Bypass

Descriptions: SD = Strongly Disagree D = Disagree IB = In Between A = Agree SA = Strongly Agree

**B) Results Spread**

<i>Choices</i>	<i>Count</i>
<i>SD(1)</i>	<i>3</i>
<i>D(2)</i>	<i>9</i>
<i>IB(3)</i>	<i>16</i>
<i>A(4)</i>	<i>51</i>
<i>SA(5)</i>	<i>15</i>

*Statistics*

*Total 348*

*Mean A(3.70)*

*Mode A*

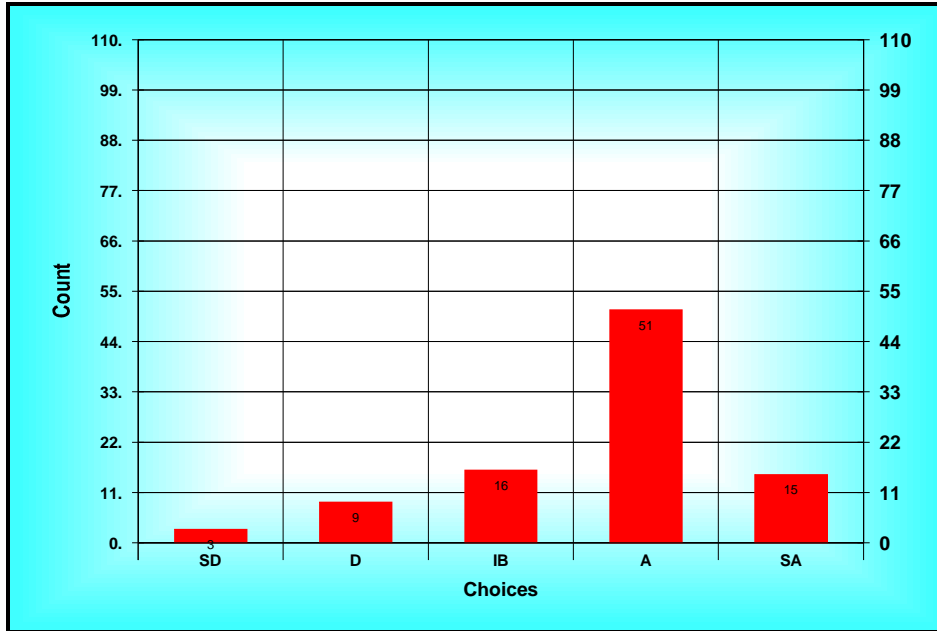
*High SA*

*Low SD*

*STD 0.96*

*N 109*

*n 94*



**Results Chart (11. The criteria for tenure are clear.)**

**12. There are faculty similar to me in my department.**

**A) Ballot**

Method: Custom Method

Options: Allow Bypass

Descriptions: SD = Strongly Disagree D = Disagree IB = In Between A = Agree SA = Strongly Agree

**B) Results Spread**

Choices	Count
SD(1)	6
D(2)	16
IB(3)	21
A(4)	37
SA(5)	18

*Statistics*

Total 339

Mean IB(3.46)

Mode A

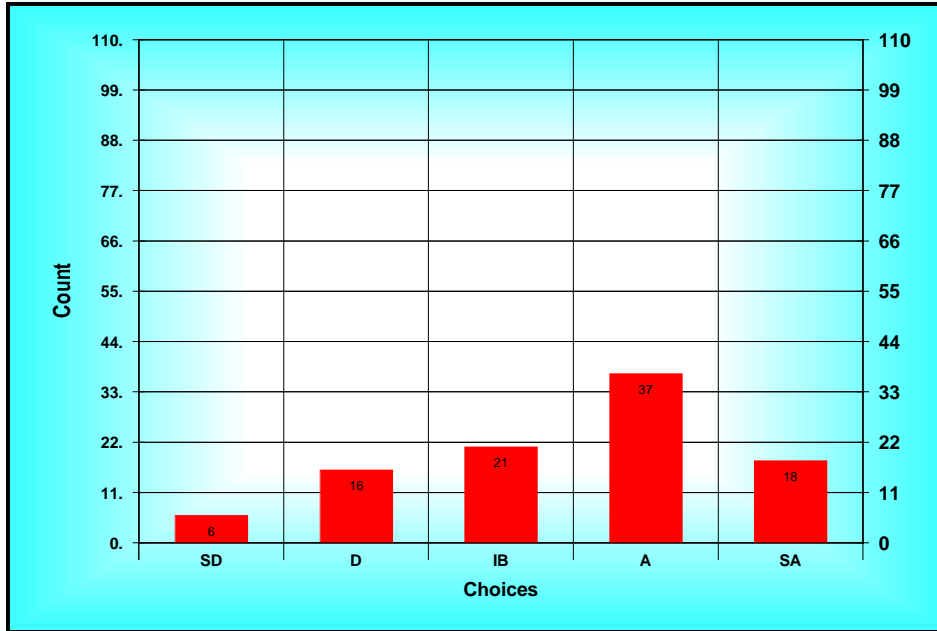
High SA

Low SD

STD 1.15

N 109

n 98



**Results Chart (12. There are faculty similar to me in my department.)**

**13. I am dissatisfied with the fairness of my immediate supervisor’s evaluation of my work.**

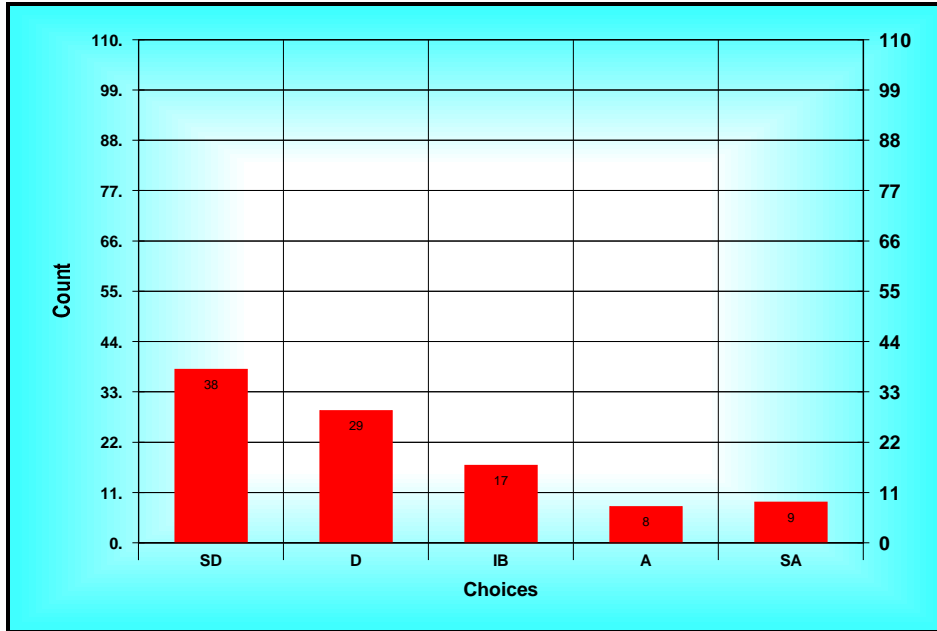
**A) Ballot**

Method: Custom Method  
 Options: Allow Bypass  
 Descriptions: SD = Strongly Disagree D = Disagree IB = In Between A = Agree SA = Strongly Agree

**B) Results Spread**

Choices	Count
SD(1)	38
D(2)	29
IB(3)	17
A(4)	8
SA(5)	9

*Statistics*  
 Total 224  
 Mean D(2.22)  
 Mode SD  
 High SA  
 Low SD  
 STD 1.28  
 N 109  
 n 101



**Results Chart (13. I am dissatisfied with the fairness of my...)**

**14. I am dissatisfied with the quality of computer services.**

**A) Ballot**

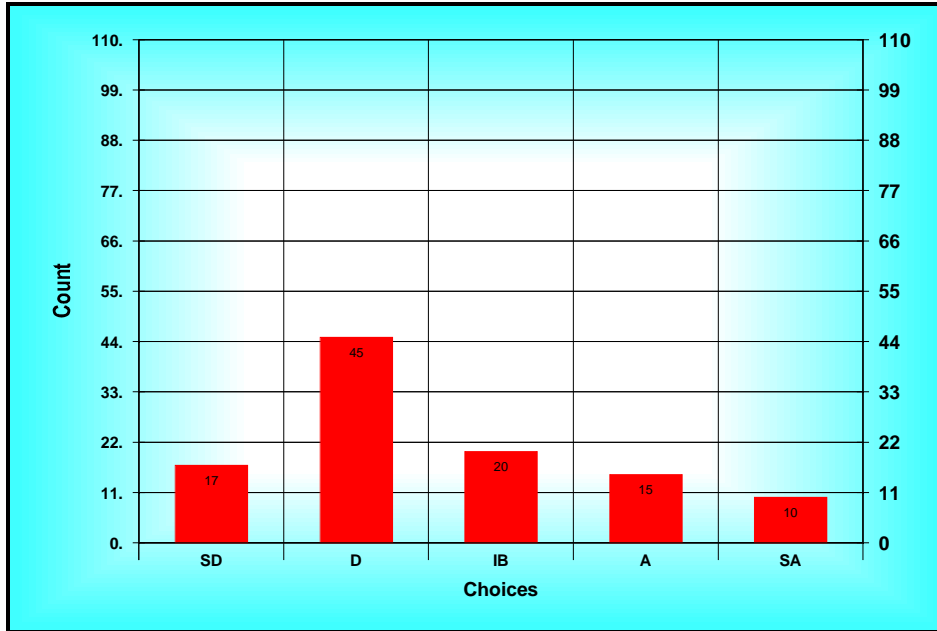
Method: Custom Method  
 Options: Allow Bypass  
 Descriptions: SD = Strongly Disagree D = Disagree IB = In Between A = Agree SA = Strongly Agree

**B) Results Spread**

<i>Choices</i>	<i>Count</i>
<i>SD(1)</i>	<i>17</i>
<i>D(2)</i>	<i>45</i>
<i>IB(3)</i>	<i>20</i>
<i>A(4)</i>	<i>15</i>
<i>SA(5)</i>	<i>10</i>

*Statistics*

*Total* 277  
*Mean* IB(2.59)  
*Mode* D  
*High* SA  
*Low* SD  
*STD* 1.19  
*N* 109  
*n* 107



**Results Chart (14. I am dissatisfied with the quality of computer...)**

**15. Communication between my chair and me is effective.**

**A) Ballot**

Method: Custom Method

Options: Allow Bypass

Descriptions: SD = Strongly Disagree D = Disagree IB = In Between A = Agree SA = Strongly Agree

**B) Results Spread**

Choices	Count
SD(1)	6
D(2)	7
IB(3)	20
A(4)	39
SA(5)	32

*Statistics*

Total 396

Mean A(3.81)

Mode A

High SA

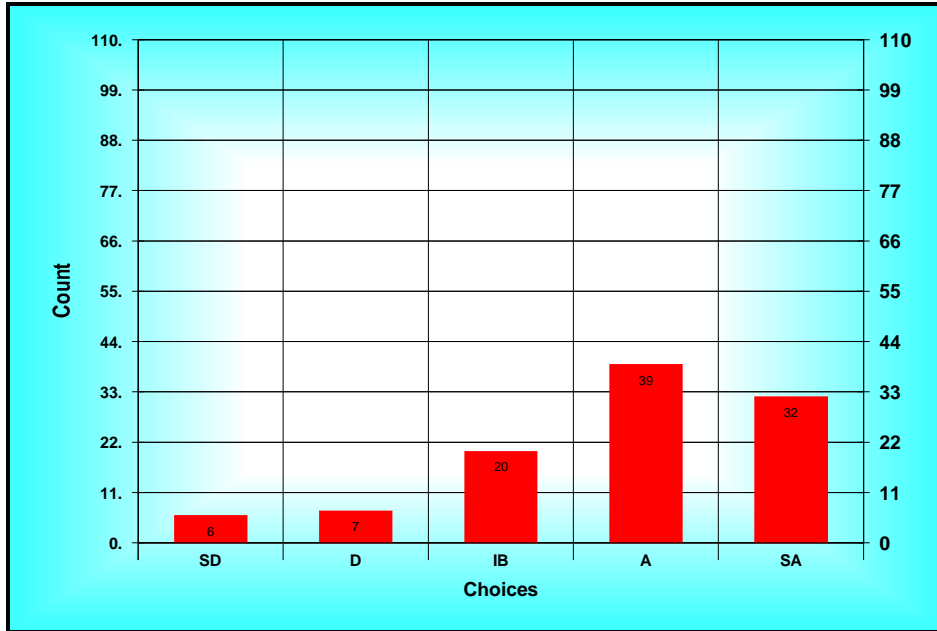
Low SD

STD 1.12

N 109

n 104





**Results Chart (15. Communication between my chair and me is...)**

**16. NDSU is not a good place in which to work.**

**A) Ballot**

Method: Custom Method

Options: Allow Bypass

Descriptions: SD = Strongly Disagree D = Disagree IB = In Between A = Agree SA = Strongly Agree

**B) Results Spread**

<i>Choices</i>	<i>Count</i>
<i>SD(1)</i>	<i>39</i>
<i>D(2)</i>	<i>45</i>
<i>IB(3)</i>	<i>8</i>
<i>A(4)</i>	<i>5</i>
<i>SA(5)</i>	<i>6</i>

*Statistics*

*Total 203*

*Mean D(1.97)*

*Mode D*

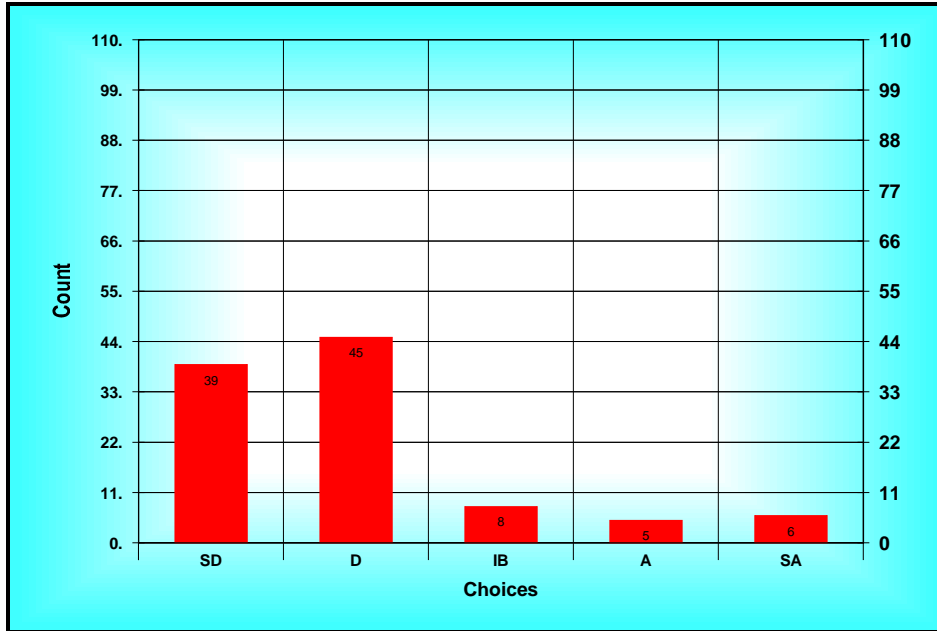
*High SA*

*Low SD*

*STD 1.09*

*N 109*

*n 103*



**Results Chart (16. NDSU is not a good place in which to work.)**

**17. If I wanted to advance to a leadership role on campus, I could do so.**

**A) Ballot**

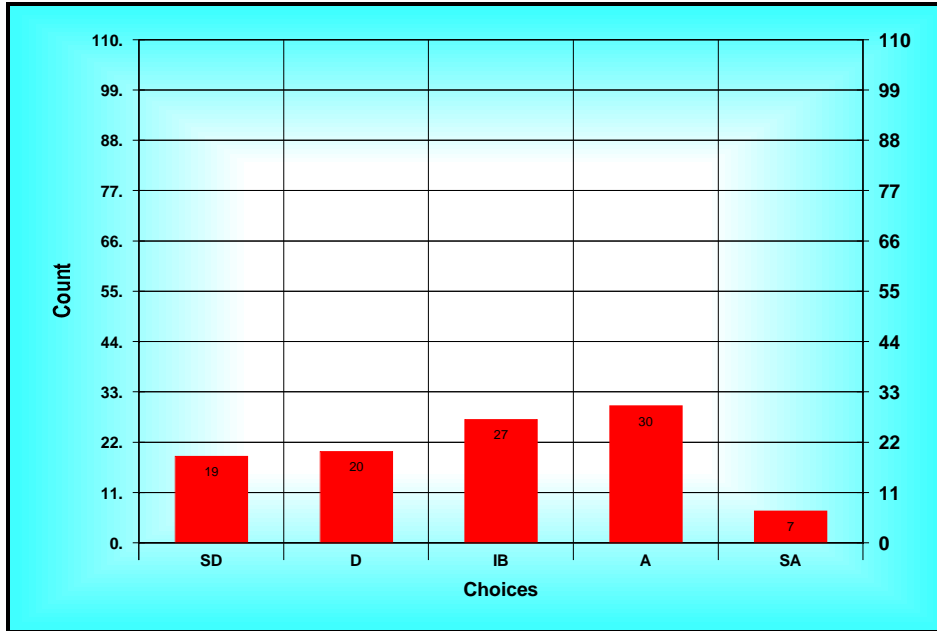
Method: Custom Method  
 Options: Allow Bypass  
 Descriptions: SD = Strongly Disagree D = Disagree IB = In Between A = Agree SA = Strongly Agree

**B) Results Spread**

Choices	Count
SD(1)	19
D(2)	20
IB(3)	27
A(4)	30
SA(5)	7

*Statistics*

Total 295  
 Mean IB(2.86)  
 Mode A  
 High SA  
 Low SD  
 STD 1.22  
 N 109  
 n 103



**Results Chart (17. If I wanted to advance to a leadership role on...)**

**18. I do not feel a sense of unity and cohesion among the faculty in my department.**

**A) Ballot**

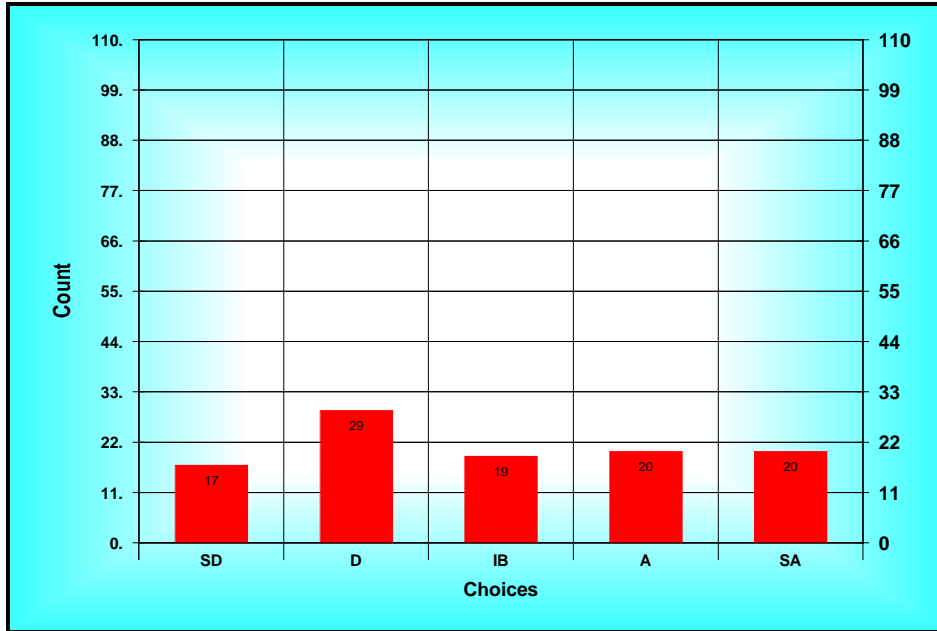
Method: Custom Method  
 Options: Allow Bypass  
 Descriptions: SD = Strongly Disagree D = Disagree IB = In Between A = Agree SA = Strongly Agree

**B) Results Spread**

Choices	Count
SD(1)	17
D(2)	29
IB(3)	19
A(4)	20
SA(5)	20

*Statistics*

Total 312  
 Mean IB(2.97)  
 Mode D  
 High SA  
 Low SD  
 STD 1.38  
 N 109  
 n 105



**Results Chart (18. I do not feel a sense of unity and cohesion among...)**

**19. The formal mentoring program is effective.**

**A) Ballot**

Method: Custom Method

Options: Allow Bypass

Descriptions: SD = Strongly Disagree D = Disagree IB = In Between A = Agree SA = Strongly Agree

**B) Results Spread**

<i>Choices</i>	<i>Count</i>
<i>SD(1)</i>	<i>16</i>
<i>D(2)</i>	<i>18</i>
<i>IB(3)</i>	<i>28</i>
<i>A(4)</i>	<i>18</i>
<i>SA(5)</i>	<i>3</i>

*Statistics*

*Total 223*

*Mean IB(2.69)*

*Mode IB*

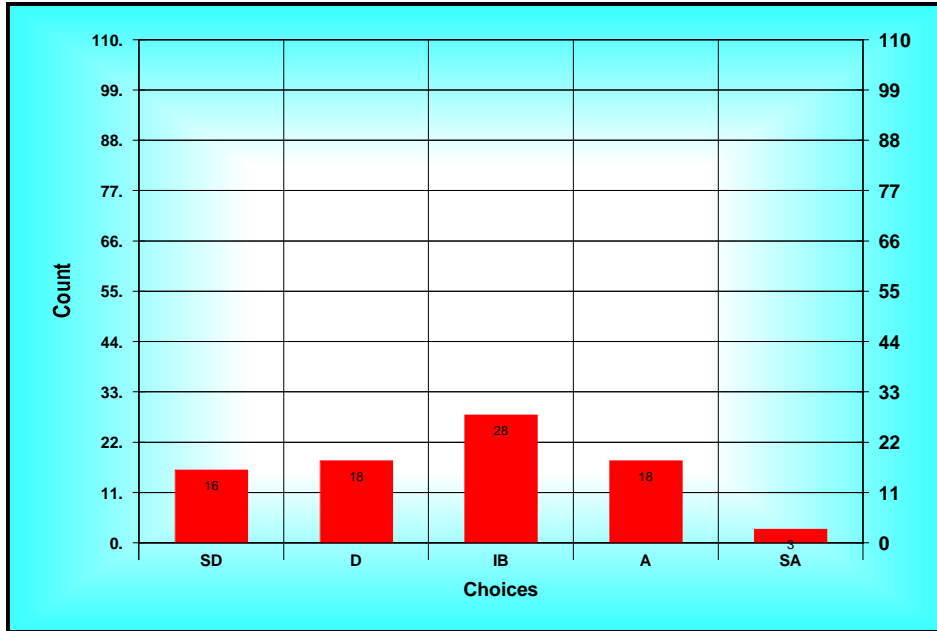
*High SA*

*Low SD*

*STD 1.13*

*N 109*

*n 83*



**Results Chart (19. The formal mentoring program is effective.)**

**20. My department is a good place in which to work.**

**A) Ballot**

Method: Custom Method

Options: Allow Bypass

Descriptions: SD = Strongly Disagree D = Disagree IB = In Between A = Agree SA = Strongly Agree

**B) Results Spread**

<i>Choices</i>	<i>Count</i>
<i>SD(1)</i>	<i>8</i>
<i>D(2)</i>	<i>12</i>
<i>IB(3)</i>	<i>17</i>
<i>A(4)</i>	<i>40</i>
<i>SA(5)</i>	<i>28</i>

*Statistics*

*Total 383*

*Mean A(3.65)*

*Mode A*

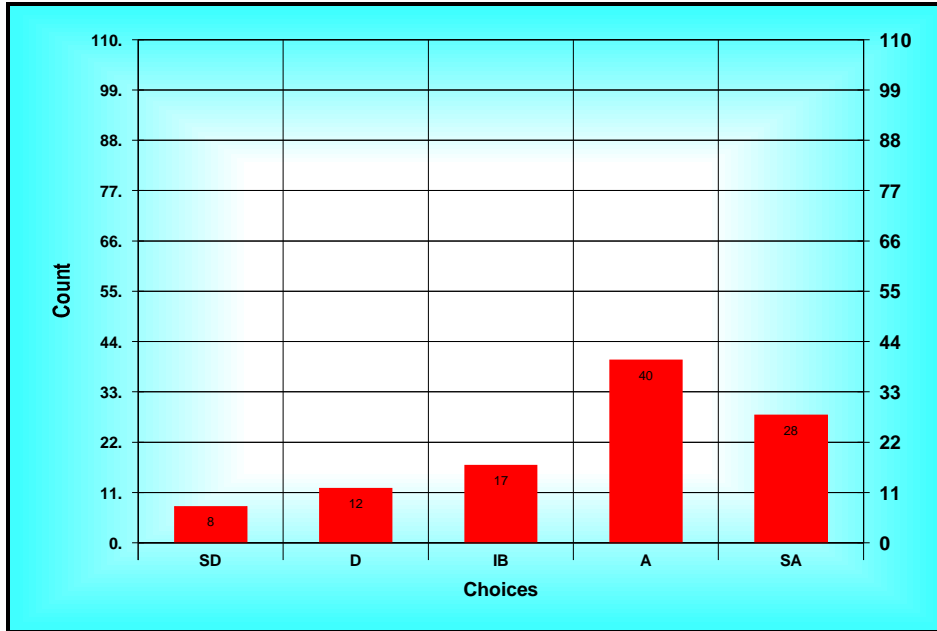
*High SA*

*Low SD*

*STD 1.21*

*N 109*

*n 105*



**Results Chart (20. My department is a good place in which to work.)**

**21. I am satisfied with what is expected of me as a researcher.**

**A) Ballot**

Method: Custom Method

Options: Allow Bypass

Descriptions: SD = Strongly Disagree D = Disagree IB = In Between A = Agree SA = Strongly Agree

**B) Results Spread**

Choices	Count
SD(1)	3
D(2)	16
IB(3)	16
A(4)	53
SA(5)	8

*Statistics*

Total 335

Mean IB(3.49)

Mode A

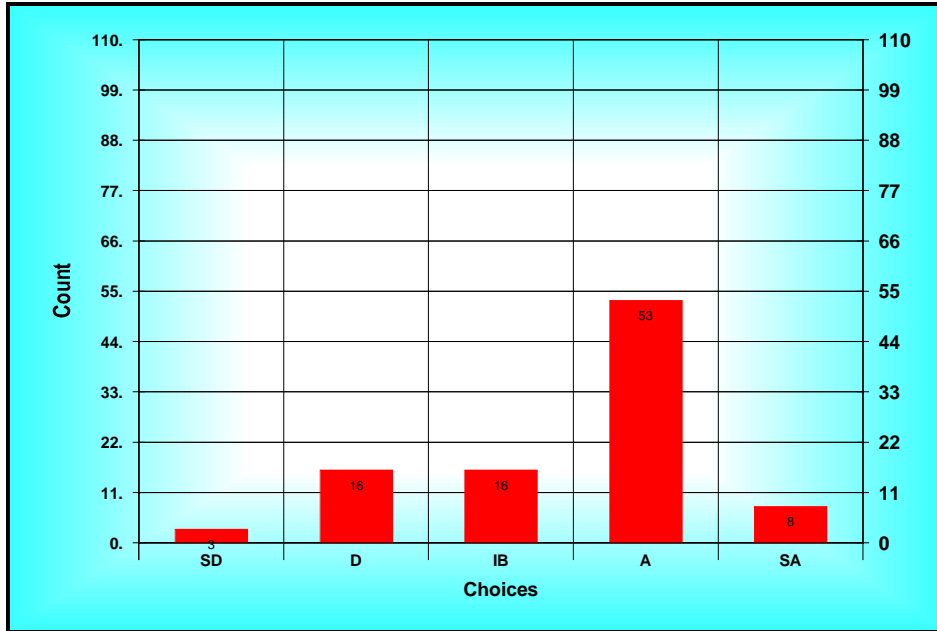
High SA

Low SD

STD 0.97

N 109

n 96



**Results Chart (21. I am satisfied with what is expected of me as a...)**

**22. I feel a sense of unity and cohesion among the faculty in my College.**

**A) Ballot**

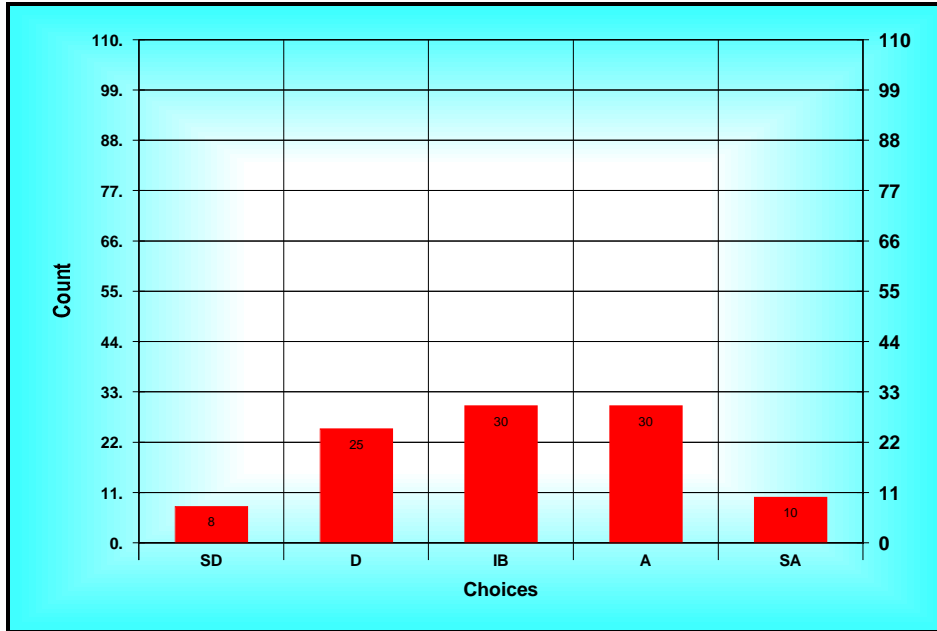
Method: Custom Method  
 Options: Allow Bypass  
 Descriptions: SD = Strongly Disagree D = Disagree IB = In Between A = Agree SA = Strongly Agree

**B) Results Spread**

Choices	Count
SD(1)	8
D(2)	25
IB(3)	30
A(4)	30
SA(5)	10

*Statistics*

Total 318  
 Mean IB(3.09)  
 Mode ??  
 High SA  
 Low SD  
 STD 1.11  
 N 109  
 n 103



**Results Chart (22. I feel a sense of unity and cohesion among the...)**

**23. I am satisfied with the amount of time I have to conduct research.**

**A) Ballot**

Method: Custom Method  
 Options: Allow Bypass  
 Descriptions: SD = Strongly Disagree D = Disagree IB = In Between A = Agree SA = Strongly Agree

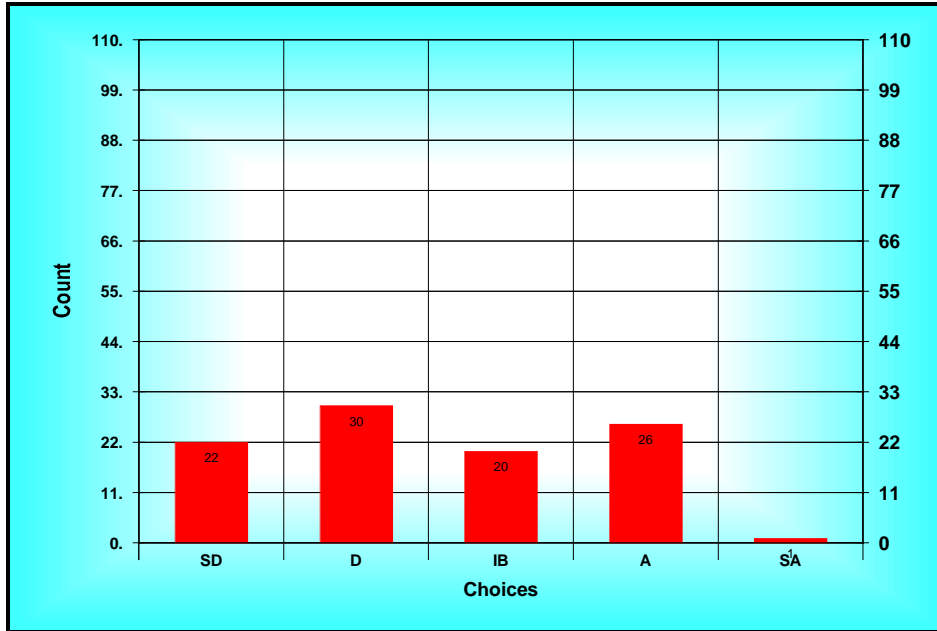
**B) Results Spread**

Choices	Count
SD(1)	22
D(2)	30
IB(3)	20
A(4)	26
SA(5)	1

*Statistics*

Total 251  
 Mean IB(2.54)  
 Mode D  
 High SA  
 Low SD  
 STD 1.14  
 N 109  
 n 99





**Results Chart (23. I am satisfied with the amount of time I have to...)**

**24. I am satisfied with the financial support (travel, equipment, etc) my department gives me.**

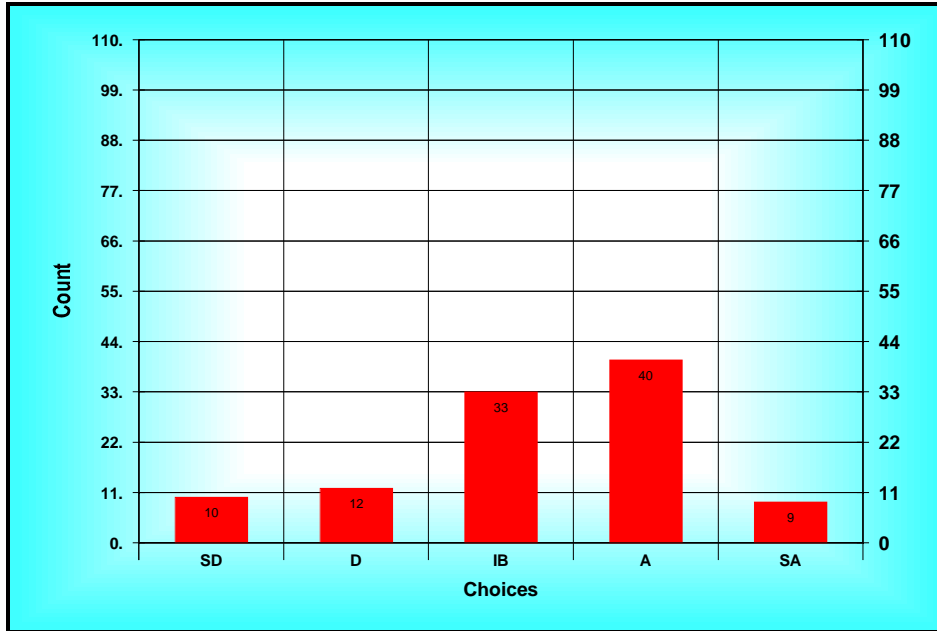
**A) Ballot**

Method: Custom Method  
 Options: Allow Bypass  
 Descriptions: SD = Strongly Disagree D = Disagree IB = In Between A = Agree SA = Strongly Agree

**B) Results Spread**

<i>Choices</i>	<i>Count</i>
<i>SD(1)</i>	<i>10</i>
<i>D(2)</i>	<i>12</i>
<i>IB(3)</i>	<i>33</i>
<i>A(4)</i>	<i>40</i>
<i>SA(5)</i>	<i>9</i>

*Statistics*  
 Total 338  
 Mean IB(3.25)  
 Mode A  
 High SA  
 Low SD  
 STD 1.09  
 N 109  
 n 104



**Results Chart (24. I am satisfied with the financial support...)**

**25. Departmental (chair and colleagues) do what they can to make any family leave situation and the tenure-track compatible.**

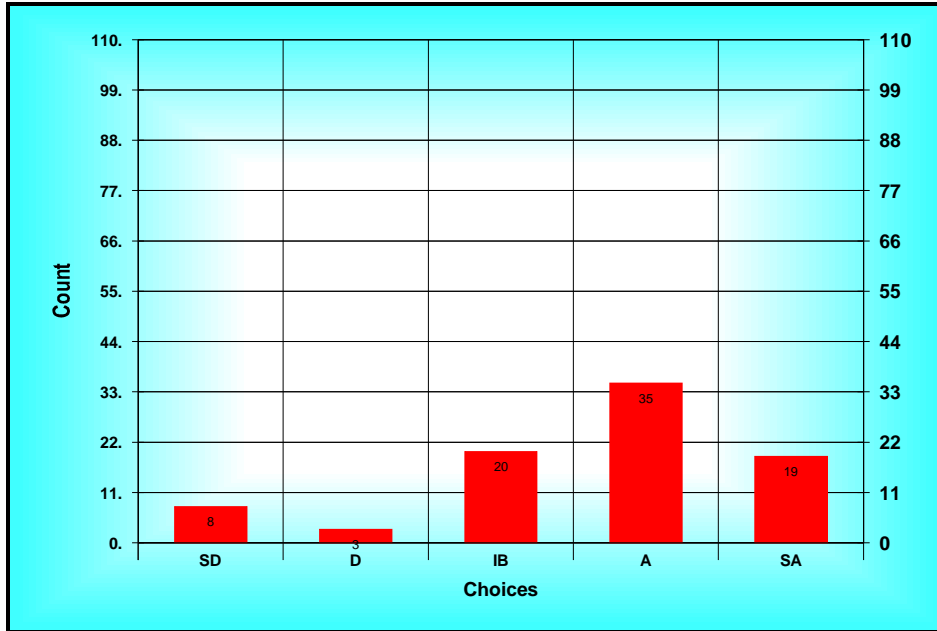
**A) Ballot**

Method: Custom Method  
 Options: Allow Bypass  
 Descriptions: SD = Strongly Disagree D = Disagree IB = In Between A = Agree SA = Strongly Agree

**B) Results Spread**

<i>Choices</i>	<i>Count</i>
<i>SD(1)</i>	<i>8</i>
<i>D(2)</i>	<i>3</i>
<i>IB(3)</i>	<i>20</i>
<i>A(4)</i>	<i>35</i>
<i>SA(5)</i>	<i>19</i>

*Statistics*  
 Total 309  
 Mean A(3.64)  
 Mode A  
 High SA  
 Low SD  
 STD 1.15  
 N 109  
 n 85



**Results Chart (25. Departmental (chair and colleagues) do what they...)**

**26. I am dissatisfied with the balance I am able to strike between professional time and personal/family time.**

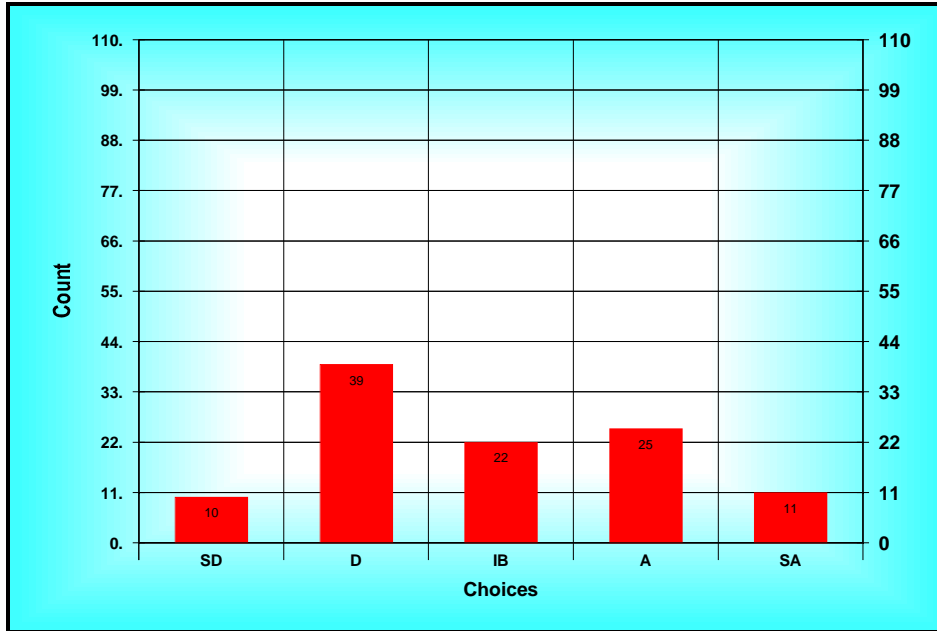
**A) Ballot**

Method: Custom Method  
 Options: Allow Bypass  
 Descriptions: SD = Strongly Disagree D = Disagree IB = In Between A = Agree SA = Strongly Agree

**B) Results Spread**

<i>Choices</i>	<i>Count</i>
<i>SD(1)</i>	<i>10</i>
<i>D(2)</i>	<i>39</i>
<i>IB(3)</i>	<i>22</i>
<i>A(4)</i>	<i>25</i>
<i>SA(5)</i>	<i>11</i>

*Statistics*  
 Total 309  
 Mean IB(2.89)  
 Mode D  
 High SA  
 Low SD  
 STD 1.18  
 N 109  
 n 107



**Results Chart (26. I am dissatisfied with the balance I am able to...)**

**27. There are faculty similar to me in my college.**

**A) Ballot**

Method: Custom Method

Options: Allow Bypass

Descriptions: SD = Strongly Disagree D = Disagree IB = In Between A = Agree SA = Strongly Agree

**B) Results Spread**

Choices	Count
SD(1)	3
D(2)	19
IB(3)	18
A(4)	50
SA(5)	12

*Statistics*

Total 355

Mean IB(3.48)

Mode A

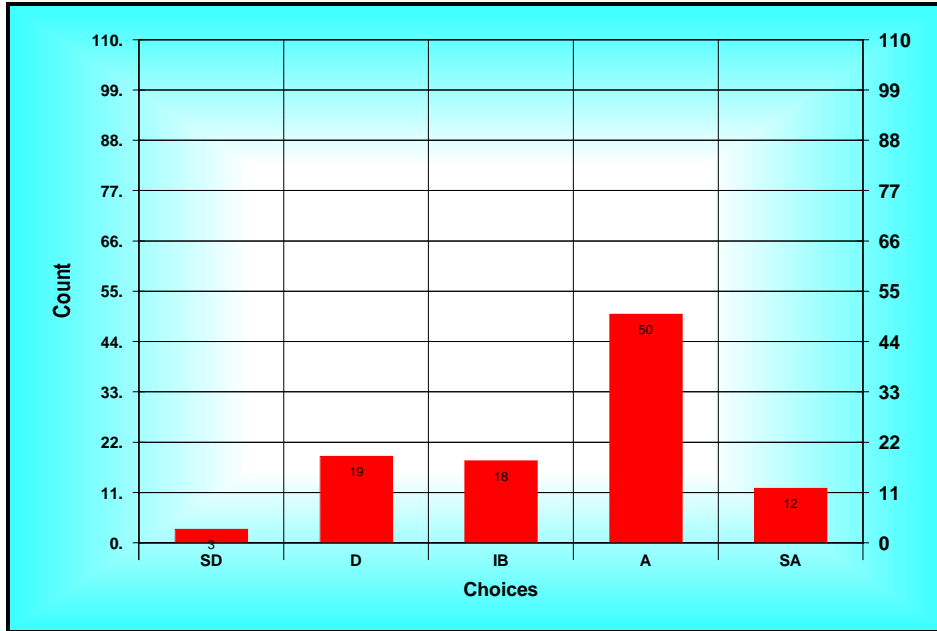
High SA

Low SD

STD 1.02

N 109

n 102



**Results Chart (27. There are faculty similar to me in my college.)**

**28. I am satisfied with the professional/collegial support my department gives me.**

**A) Ballot**

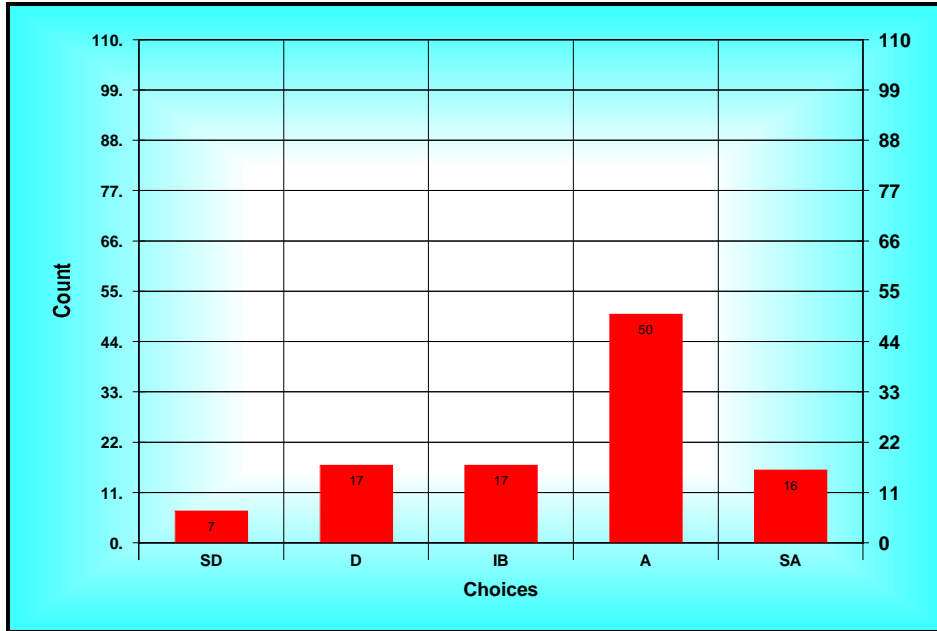
Method: Custom Method  
 Options: Allow Bypass  
 Descriptions: SD = Strongly Disagree D = Disagree IB = In Between A = Agree SA = Strongly Agree

**B) Results Spread**

Choices	Count
SD(1)	7
D(2)	17
IB(3)	17
A(4)	50
SA(5)	16

*Statistics*

Total 372  
 Mean IB(3.48)  
 Mode A  
 High SA  
 Low SD  
 STD 1.13  
 N 109  
 n 107



**Results Chart (28. I am satisfied with the professional/collegial...)**

**29. I do not like the Fargo community.**

**A) Ballot**

Method: Custom Method

Options: Allow Bypass

Descriptions: SD = Strongly Disagree D = Disagree IB = In Between A = Agree SA = Strongly Agree

**B) Results Spread**

Choices	Count
SD(1)	53
D(2)	39
IB(3)	11
A(4)	3
SA(5)	3

*Statistics*

Total 191

Mean D(1.75)

Mode SD

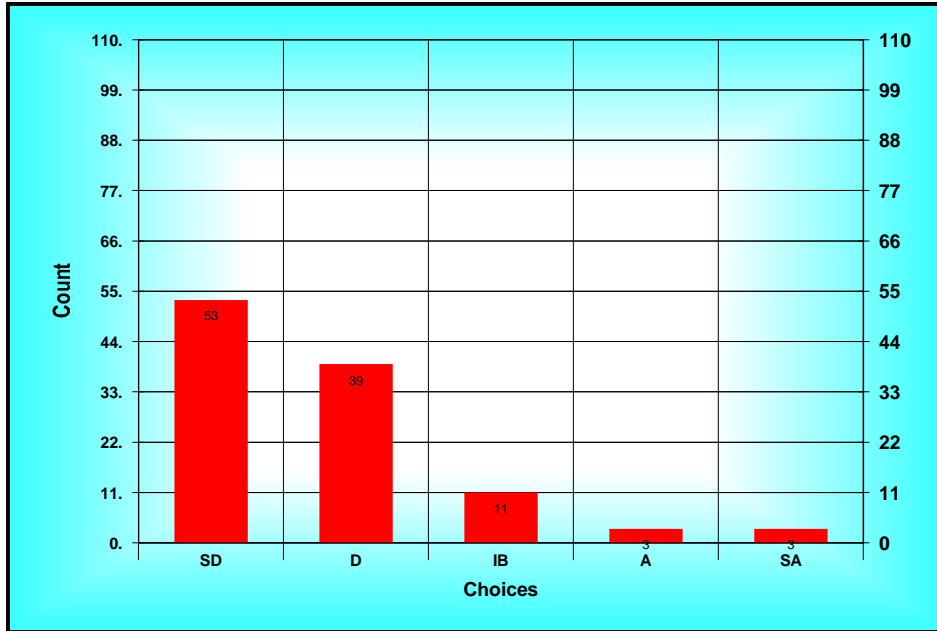
High SA

Low SD

STD 0.94

N 109

n 109



**Results Chart (29. I do not like the Fargo community.)**

**30. There are sufficient opportunities to collaborate on research with other faculty at NDSU.**

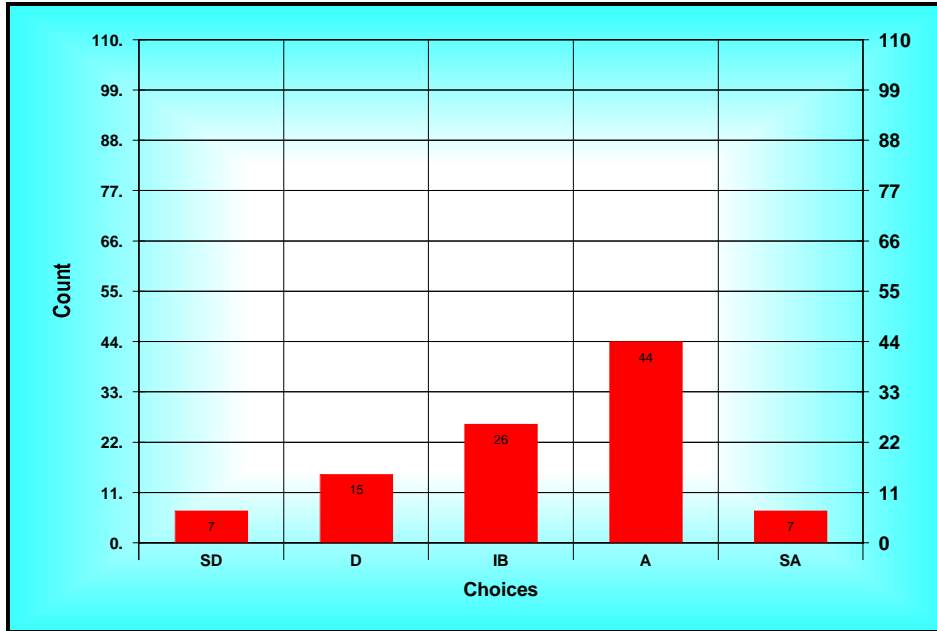
**A) Ballot**

Method: Custom Method  
 Options: Allow Bypass  
 Descriptions: SD = Strongly Disagree D = Disagree IB = In Between A = Agree SA = Strongly Agree

**B) Results Spread**

Choices	Count
SD(1)	7
D(2)	15
IB(3)	26
A(4)	44
SA(5)	7

*Statistics*  
 Total 326  
 Mean IB(3.29)  
 Mode A  
 High SA  
 Low SD  
 STD 1.04  
 N 109  
 n 99



**Results Chart (30. There are sufficient opportunities to collaborate...)**

**31. I am satisfied with my salary at NDSU.**

**A) Ballot**

Method: Custom Method

Options: Allow Bypass

Descriptions: SD = Strongly Disagree D = Disagree IB = In Between A = Agree SA = Strongly Agree

**B) Results Spread**

<i>Choices</i>	<i>Count</i>
<i>SD(1)</i>	<i>23</i>
<i>D(2)</i>	<i>37</i>
<i>IB(3)</i>	<i>16</i>
<i>A(4)</i>	<i>28</i>
<i>SA(5)</i>	<i>4</i>

*Statistics*

*Total 277*

*Mean IB(2.56)*

*Mode D*

*High SA*

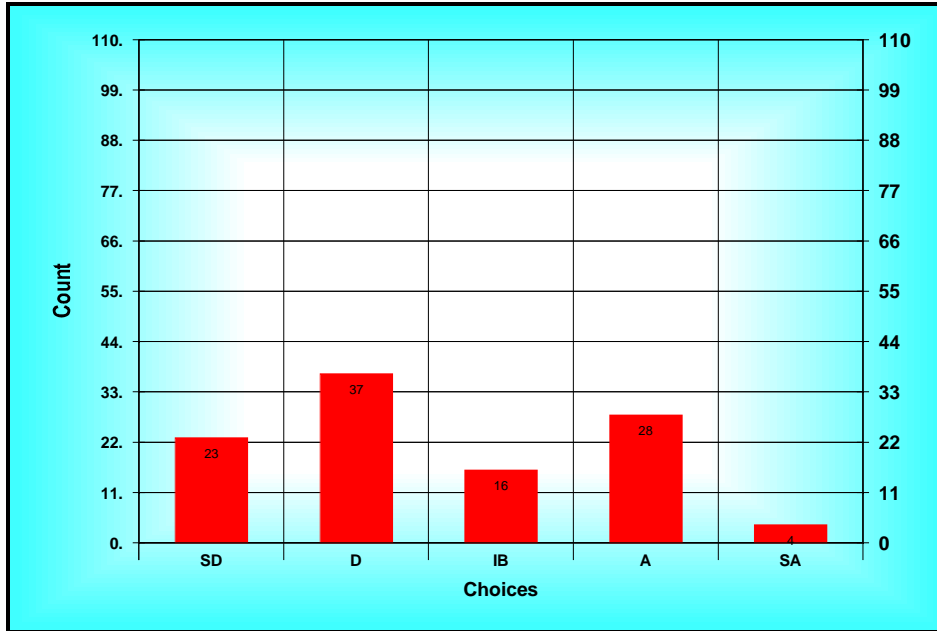
*Low SD*

*STD 1.19*

*N 109*

*n 108*





**Results Chart (31. I am satisfied with my salary at NDSU.)**

**32. I am satisfied with the quality of NDSU’s graduate students.**

**A) Ballot**

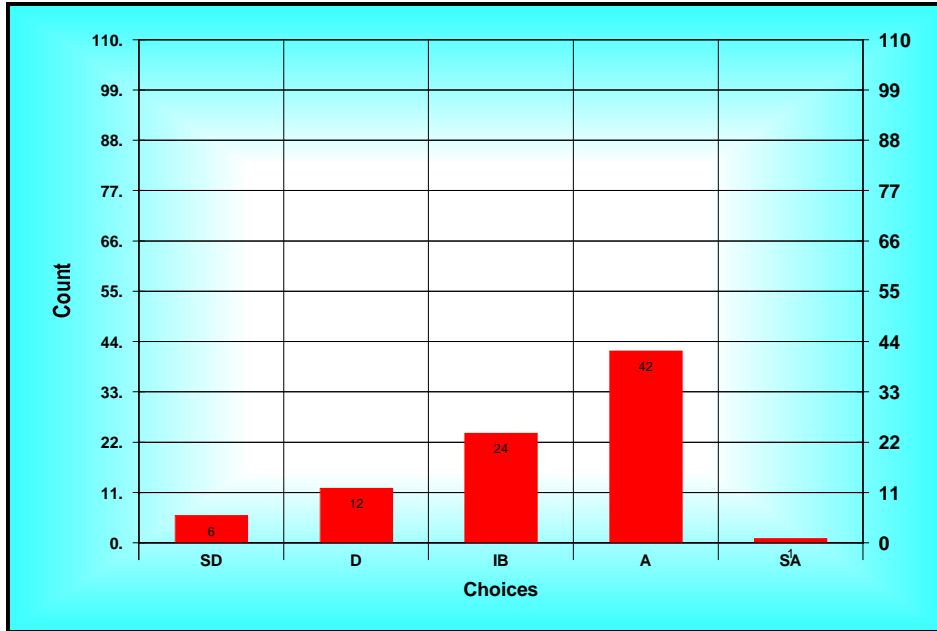
Method: Custom Method  
 Options: Allow Bypass  
 Descriptions: SD = Strongly Disagree D = Disagree IB = In Between A = Agree SA = Strongly Agree

**B) Results Spread**

<i>Choices</i>	<i>Count</i>
<i>SD(1)</i>	<i>6</i>
<i>D(2)</i>	<i>12</i>
<i>IB(3)</i>	<i>24</i>
<i>A(4)</i>	<i>42</i>
<i>SA(5)</i>	<i>1</i>

*Statistics*

*Total* 275  
*Mean* IB(3.24)  
*Mode* A  
*High* SA  
*Low* SD  
*STD* 0.96  
*N* 109  
*n* 85



**Results Chart (32. I am satisfied with the quality of NDSU’s...)**

**33. I am satisfied with the quality of NDSU’s undergraduate students.**

**A) Ballot**

Method: Custom Method

Options: Allow Bypass

Descriptions: SD = Strongly Disagree D = Disagree IB = In Between A = Agree SA = Strongly Agree

**B) Results Spread**

Choices	Count
SD(1)	3
D(2)	12
IB(3)	33
A(4)	45
SA(5)	5

*Statistics*

Total 331

Mean IB(3.38)

Mode A

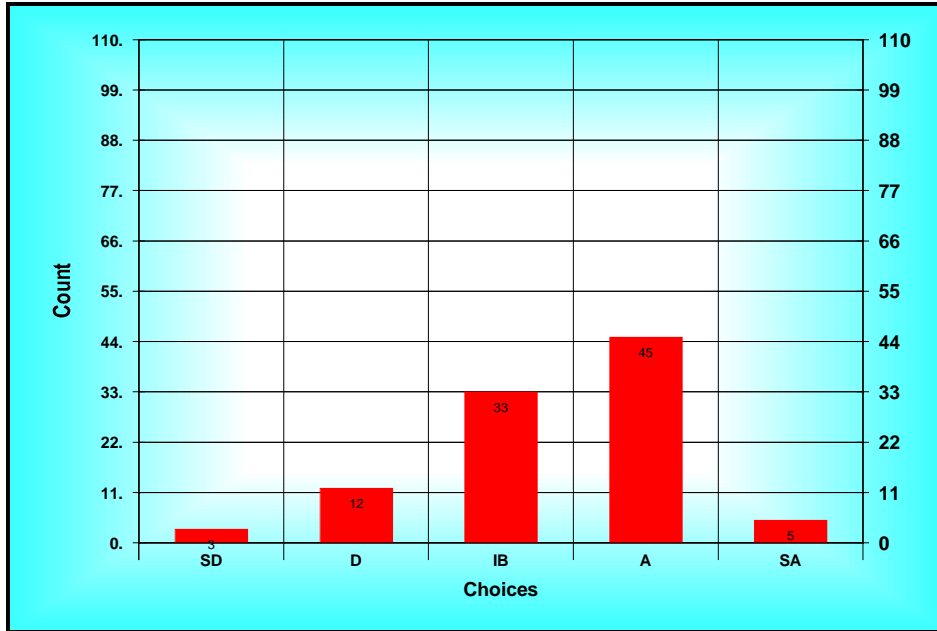
High SA

Low SD

STD 0.88

N 109

n 98



**Results Chart (33. I am satisfied with the quality of NDSU’s...)**

**34. I am satisfied with the quality of NDSU’s library support and services.**

**A) Ballot**

Method: Custom Method

Options: Allow Bypass

Descriptions: SD = Strongly Disagree D = Disagree IB = In Between A = Agree SA = Strongly Agree

**B) Results Spread**

<i>Choices</i>	<i>Count</i>
<i>SD(1)</i>	<i>26</i>
<i>D(2)</i>	<i>16</i>
<i>IB(3)</i>	<i>21</i>
<i>A(4)</i>	<i>39</i>
<i>SA(5)</i>	<i>1</i>

*Statistics*

*Total 282*

*Mean IB(2.74)*

*Mode A*

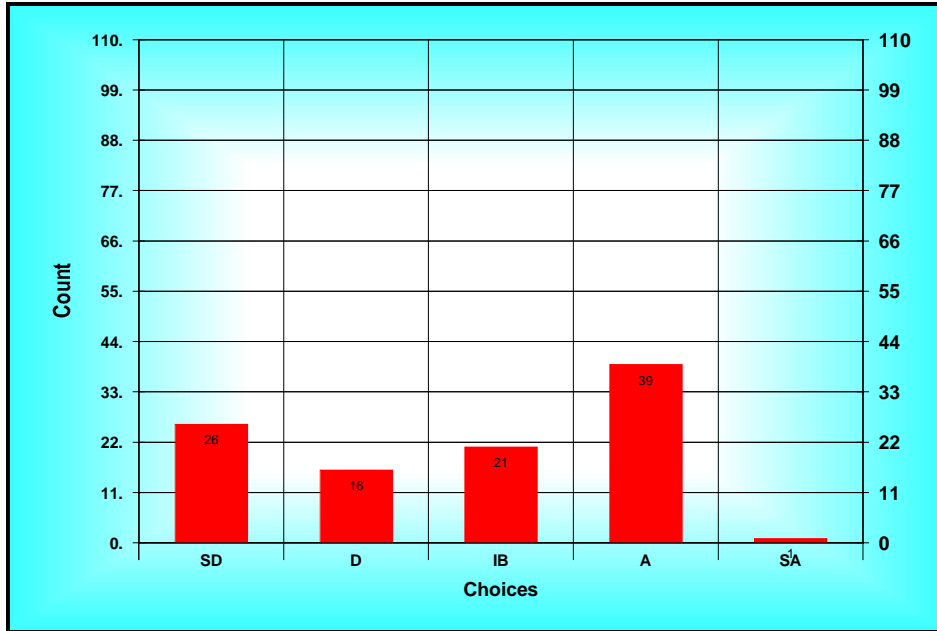
*High SA*

*Low SD*

*STD 1.24*

*N 109*

*n 103*



**Results Chart (34. I am satisfied with the quality of NDSU's ...)**

**35. My job at NDSU is stressful due to the difficulty in balancing work and family.**

**A) Ballot**

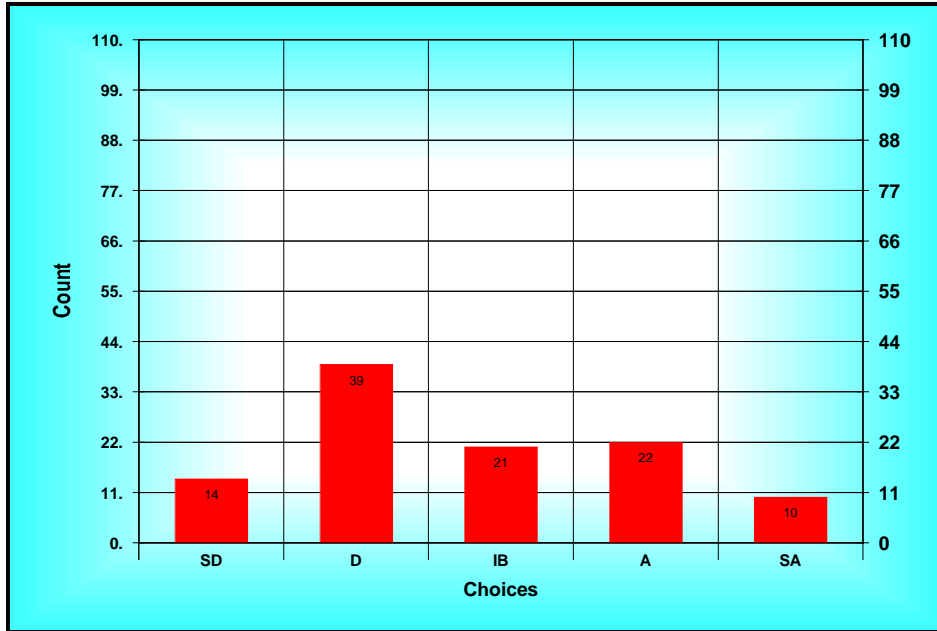
Method: Custom Method  
 Options: Allow Bypass  
 Descriptions: SD = Strongly Disagree D = Disagree IB = In Between A = Agree SA = Strongly Agree

**B) Results Spread**

Choices	Count
SD(1)	14
D(2)	39
IB(3)	21
A(4)	22
SA(5)	10

*Statistics*

Total 293  
 Mean IB(2.76)  
 Mode D  
 High SA  
 Low SD  
 STD 1.20  
 N 109  
 n 106



**Results Chart (35. My job at NDSU is stressful due to the difficulty...)**