



NATIVE PEOPLES' CONCEPTS OF HEALTH AND ILLNESS

COMMUNITY | RESEARCH IN THE CLASSROOM | SURP | GREAT OPPORTUNITIES

NDSU INBRE Monthly Update

IN THIS ISSUE

- [Native Voices Exhibit](#)
- [Expand Your Horizons Event](#)
- [SEA-PHAGES Program](#)
- [Offering RTM as Course Credit](#)
- [SURP 2018 Planning](#)
- [NDSU INBRE Facebook Page](#)
- [Student Opportunities](#)

Native Voices Exhibit

Sponsored by NDSU Libraries and the AIPHRC

The NDSU Library hosted the Native Voices Exhibit from October 11-November 21 in the Memorial Union Gallery. The Native Voices Exhibit is a travelling exhibit sponsored by the National Library of Medicine. The exhibition included iPad assisted video clip interviews with native individuals who shared their knowledge and personal experience in traditional medicine and concepts of health, illness and healing. The exhibit's focus is indigenous perspectives of health and healing compared to the current western practices and ways of thinking.

Different native people throughout the country; health professionals, community leaders, traditional healers, and others came together to give their voice and share their stories and personal experience for the exhibit.

There are detailed and well-presented interviews on indigenous perspectives on health, illness, and healing practices. Those interviewed spoke on how it is crucial individual's take responsibility to maintain good health and are fully committed to maintain their health. To attain that level of health, the help of family, identity, role models and tribal ties play a significant role

in individual health. This includes the help of traditional healers, who only help people who ask for it. Traditional healers spend a large amount of time with patients working to discover the root cause of their illness and treat it.

At a community level, the role of powwow is greatly depicted, being a traditional social gathering, the powwow serves as a source of support and healing. Another form of individual and community health described was the role of traditional sports such as Choctaw stick ball as means of entertainment and physical exercise.

Individual experience on the different disease and disorders that killed many natives and boarding school experience are also voiced in this section of the exhibit. Listening to the stories and interviews, it is clear to see that individual health cannot be separated from community wellness.

Indigenous people's love for nature and how strength and healing are derived from nature is another section of the exhibit. As one traditional healer said "individual wellness cannot be achieved when the connection to nature is missing or contaminated". The importance of water, land, environment and

medicinal plants was also explained in detail by community elders and traditional healers.

Native people live in two different worlds one that honors the ways of ancestors and one that acknowledges the convenience and challenges of modern society. Wellness is sought through the preservation of language, ceremonies and burial practices. Reverence for the Creator and respect for the elders are important traditions. This exhibit strongly depicted these truths through real life experiences.

Healing is more than the treatment of the physical symptoms. It is intertwined with larger concepts of health-- balance in nature, community support, positive tribal identity and individual self-respect. Effects of diet and nutrition, the new ways and old ways of healing are also discussed at a great length.

The exhibit was so powerful and moving. It gives a whole new perspective in the way we see and understand the history of the native population and how it has withstood the test of time.

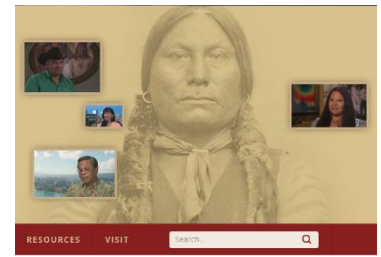
For those of you who did not get the chance to see the exhibit, we will leave you a link to experience it yourself.

Native Voices Exhibit Link:

<https://www.nlm.nih.gov/nativevoices/index.html>

"Native Voices" Exhibit Comes to NDSU article appears on KVRR:

<http://www.kvrr.com/2017/10/17/46234/>



Expand Your Horizons Event

Sponsored by NDSU

Expand Your Horizons (EYH) is an annual event hosted by NDSU in the spring as part of a nationwide effort to engage middle and high school females in thinking about STEM and related careers. EYH is a non-profit organization. Their mission is to "inspire girls to recognize their potential and pursue opportunities in science, technology, engineering, and mathematics."

The event draws in hundreds of local 7th-9th graders who participate in STEM and related workshops throughout the day. Female STEM and related role models lead the hands-on workshops as a means for youth to see themselves as future STEM professionals.

NDSU INBRE has participated in this event for the past 3 years and will be hosting a workshop for this year's event. The workshop is entitled "Healthy Women, Healthy Communities." It will feature a Q&A Panel of Women in Public Health Leadership Roles, a hands-on Vaccine-Outbreak activity, and a Rez Café: Healthy Communities small group activity.

The goal is for female youth to develop a better understanding of public health and its role in community health. Female youth interested in attending this event should let their teachers or school counselors know.



NDSU INBRE WORKSHOP

Expand Your Horizons
Saturday April 7, 2018
1:15pm – 3:15pm
NDSU Memorial Union, Hidatsa Room

FOR MORE INFORMATION CONTACT:
Karen Murie
Expand Your Horizons Coordinator
Karen.murie@ndsu.edu
701-231-8638

SEA-PHAGES Program

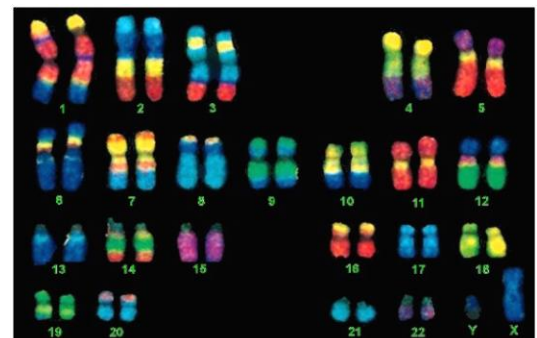
Sponsored by the Howard Hughes Medical Institute

SEA-PHAGES is the Science Education Alliance for Phage Hunters Advancing Genomic and Evolutionary Science program. It's a national research-based lab course that is designed for college students. The program provides training for faculty to implement research-based curricula. An outcome of this program is students are more prepared and better equipped for advance research and career opportunities, including graduate school.

Students learn to isolate bacteriophages, annotate these phages, and then enter them into the National Center for Biotech

nology Information GenBank database. Students present the results from their experiment at the SEA Symposium. To date, more than 4,100 college freshmen from over 100 colleges took part in this research-based curriculum. Altogether, the program has produced over 20 peer-reviewed publications on the isolation of bacteriophages.

Their website includes a list of benefits for students, course overview and sample syllabus, publications on the program, and the application forms. Contact Joslynn Lee for questions about the program.

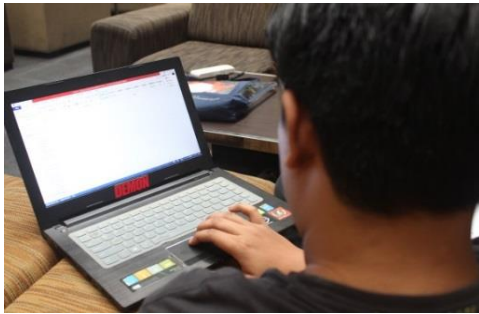


CONTACT INFORMATION

Joslynn S. Lee, PhD
Science Education
Howard Hughes Medical
Institute
Leejz@hhmi.org
301-215-8827
www.hhmi.org

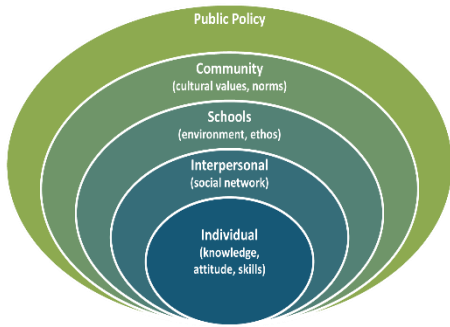
Offering RTM as Course Credit

Project Progress



NDSU INBRE faculty and staff have been formulating an introductory public health course for tribal colleges to use as desired. The drafted course is designed as an online course that can be accessed at the tribal college. Course sessions include a variety of topics in public health research presented with pre-recorded lectures and case studies. The INBRE Project Manager, would appear on a tribal college campus as a facilitator each week or bi-weekly as desired by the college.

The course can be designed as an 8 week block course, or a full 15 week semester course. The content is intended for students interested in community health, research, and health disparities. The goals of the course are for students to acquire greater knowledge on public health terminology, concepts, and practice. understanding the role of food on health, and othe factors that impact health.



Social ecological model of public health

The intended student outcomes include:

- naming the 10 essential services of public health,
- understanding research protections,
- identifying animal conditions that can impact animal and human health,
- identifying environmental mechanisms that can impact human health, and
- expanding attitudes on public health.

This course proposal is undergoing review by curriculum committees at two tribal colleges for approval for Fall 2018. For a complete list of the lecture topics and case studies for this proposed course, please contact the INBRE Project manager, 701-231-6111.

SURP 2018 Planning

Sponsored by NDSU INBRE



Planning for SURP 2018 is underway. The save the dates have been sent to stakeholders at local tribal colleges, and staff are beginning to make connections to interested students.

Staff are revising and updating the sessions in the program. The same elements included in previous years will remain in the program such as: Research 101, indigenous research methods, case study and research ethics, lab tours, mentoring, professional development,

writing workshops, and the final presentation.

As the semester begins to wind down, SURP staff will be developing a presentation to assist students with applying to the program as well as applying to receive course credit. An announcement will be made when this presentation will be available near January 2018.

The grad school 101 and transfer information as well as the Nation Building sessions will be updated. Modifying the grad school and transfer information into one session as an Opportunity Fair and hosting a one hour workshop on an introduction to Nation Building will provide students with more opportunities to meet with their faculty mentor and work on their final projects.

The online application will be available in January 2018. SURP staff plan on hosting informational workshops, meetings, and/or webinars to assist students with applying for course credit. More information on the informational workshops coming soon.

Student Opportunities

Upcoming and open applications

STEM Programs Basic Search

- IBP's database includes **1241** programs in a variety of disciplines and education levels
- Allows you to browse by user group and discipline or by geography
- To learn more visit <http://www.pathwaystoscience.org/programs.aspx>

Bonneville Power Administration (BPN)

- One to two positions will be available in BPA's Transmission Service Planning and Asset Management, System Operations, and Engineering and Technical -- depending on the students' engineering major of study and interest

NDSU INBRE Facebook Page

Current transitions

As NDSU INBRE begins to increase use of social media to reach stakeholders and students, staff have decided to make a few transitions. **NDSU INBRE has created a Facebook Page.** This page will include the following:

- Student research opportunities
- Student internships
- Scholarships
- Educator opportunities
- Newsletter postings
- Travel announcements
- SURP information and announcements
- INBRE Program announcements

This page will replace the NDSU INBRE Facebook Group. Beginning in December, all posts will only appear on the NDSU INBRE Facebook Page.

Another transition to expect is the elimination of educator and student opportunities listed in the monthly newsletter. These announcements will be shared only to NDSU INBRE's social media outlets. Staff and faculty can choose to have the list of student and educator opportunities sent to them in an email.

If you have any questions please contact INBRE Graduate Assistant at haimanot.berhane@ndsu.edu or INBRE Project Manager at pearl.walker@ndsu.edu.

NDSU INBRE
Dept. 2662
PO Box 6050
Fargo, ND 58108



If you would like to nominate a student to be featured in our newsletter, have suggestions, or questions, contact us!

Pearl Walker-Swaney, INBRE Project Manager
pearl.walker@ndsu.edu

Haimanot Berhane, INBRE Graduate Assistant
haimanot.berhane@ndsu.edu

Ryan Eagle, AIPHRC Research Project Manager
ryan.eagle@ndsu.edu

Vanessa Tibbitts, AIPHRC Education Project Manager
vanessa.tibbitts@ndsu.edu

Bonneville Power Administration (BPN)

- Vancouver, WA (just outside of Portland, OR)
- **Duties:** Interns will assist senior engineers working on drawings, performing planning functions, design, testing equipment, participating in field visits and other activities related to project development
- The ideal student will have a background in electrical, civil or mechanical engineering.
- Interns will be provided with: Round-trip airfare or mileage to internship site, Weekly stipend - \$600, Dormitory lodging, Weekly Local transportation allowance - \$70
- Applications Due: December 15, 2017 11:59 pm (MST)
- To apply on line visit
<http://www.aises.org/scholarships/bonneville-power-administration-bpa-internships>

AT & T Summer Bridge

- Selective summer program designed to prepare you for success in engineering and math course work
- **Eligibility:** freshman students who have been accepted to the University of Oklahoma planning to major in the college of engineering or collage of earth and energy
- 4 week residential on campus program
- Earn math credit
- Early July to Early August
- For more info visit
<http://ou.edu/content/coe/diversity/summerbridge.html#>

DoD SMART Scholarship Program

- Full tuition scholarship while in school, annual stipend, summer research internships
- **Benefit:** a job in your STEM field after you graduate at a cutting-edge Department of Defense facility
- Scholarship application deadline is December 1, 2017 5PM EST
- Apply online at: <https://www.smartscholarship.org/>

Summer Health Professions Education Program

- 6 weeks
- Application opens December 1, 2017
- Application deadline February 15, 2018
- Learn more at: <http://www.shpep.org/>

Bio - chemical Markers Summer Fellowship

- A summer fellowship opportunity is available in the Division of Laboratory Sciences (DLS) within the National Center for Environmental Health (NCEH)
- Location: Centers for Disease Control and Prevention (CDC) on the Chamblee Campus in Atlanta, Georgia.
- Provides laboratory support that improves the detection, diagnosis, treatment, and prevention of environmental, tobacco-related, nutritional, newborn, selected chronic and selected infectious diseases.
- Works to improve the rapid and accurate detection of chemical threat agents, radiologic threat agents, and selected toxins.
- The application deadline is January 19, 2018
- <https://www.zintellect.com/Posting/Details/3727>