



THE WINSLOW
STAY. REST. REJUVINATE

The Winslow Spa
Project Folio

Designed By Sophie Semanko

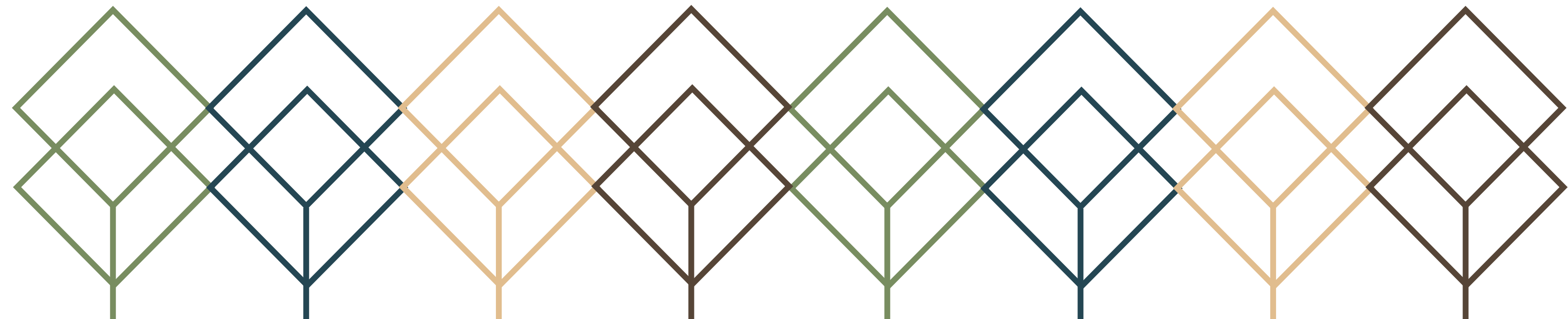
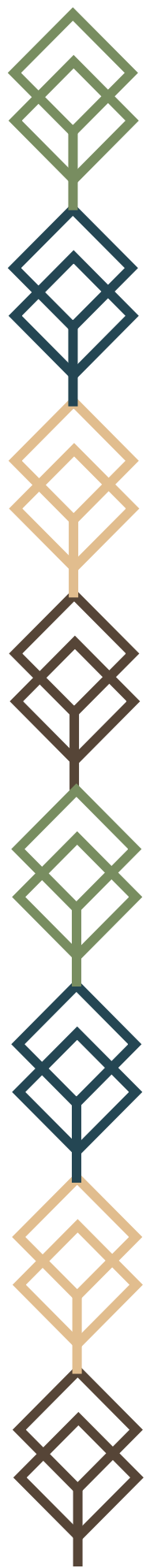



Table of Contents



	Information Gathering Summary
	Design Concept Statement
	Goals & Objectives
	User Description
	Code Analysis Report
	Annotated Rendered Furniture, Fixtures & Equipment (FF&E) Plan
	Rendered Perspectives
	Furniture, Fixtures, & Equipment (FFE) Schedules
	Room Finish Schedules
	Lighting Schedules
	Appendix
	Construction Documents

Information Gathering Summary



The Winslow Spa is a place where guests can improve their wellness and encourages relaxation through holistic treatments and experiences such as meditation, massages, skin care, body masks, herbal wraps, waxing, and a salt room. The interior environment, however, plays just as big of a role when it comes how people can feel relaxed or have improved wellness. The Winslow Spa is designed to incorporate WELL Building Standards which focuses on how the built environment impacts human health and well-being through air, water, nourishment, light, fitness, comfort, and mind (WELL, 2022). The Winslow Spa includes design implications that achieves standards from water, light, sound, mind, and community. The locker rooms meet Part 2 of W08 Hygiene Support with the integration of hands-free flushing, contactless soap dispensers and hand drying, the ability to exit the bathroom hands-free, and faucets that are sensor-activated, equipped with programmable line-purge system, and have hot- and cold-water lines being mixed at point of use. Many accommodations from Part 1 of W08 are also incorporated in the design of the locker rooms. When it comes to Light, the Winslow Spa meets Part 2 of L05 Daylight Design Strategies with the use of automatic roller shades that can be controlled by occupants. This allows the flexibility to let natural light into the space. L09 Occupant Lighting Control is also met with the various levels of lighting and the ability to control them. Acoustical materials provide an NRC rating of at least 0.75 to support S05 Sound Reducing Surfaces. Throughout the spa, different levels of lighting, sound masking materials, thermal comfort, various seating arrangements, nature incorporation, calming colors and textures, and visual privacy are incorporated to support M07 Restorative Places (WELL, 2022).

Gokcakan & Gokcakan Cicek, (2016) share in their study about colors and their psychological and physiological effects that “The most important goal of interior design is to create physical environments that address people’s physical, mental, emotional, and social requirements. While creating these environments, it is crucial that people are happy, peaceful, comfortable, and healthy when using them” (Gokcakan & Gokcakan Cicek, 2016). The colors found in spaces can affect how people feel in them. Warm colors can have the effect of liveliness, joy, excitement, and action. Cold colors lead to calmness, comfort, and relaxation. Cool colors, especially green and blue, are used throughout the space to create a calming and relaxing environment. Blues can make people feel relaxed and comforted and has a relationship with lowering blood pressure. Green represents harmony, relaxation, wisdom, nature, and growth. It can have a refreshing effect as well. White is also used as it signifies unity and purity. Brown is also incorporated throughout the space to support the industrial farmhouse theme. Although brown is the least liked color, the effects depend on the materials used, not just the color. Brown is represented in the space through the use of wood materials, which also incorporates biophilia into the space and supports the design concept (Gokcakan & Gokcakan Cicek, 2016).

One of the treatment options at the Winslow Spa is a salt room. The salt room creates a halocomplex which consists of a halogenerator and walls and/or floors covered with salt. A halogenerator is what provides the beneficial effects of halotherapy. The halogenerator brings in a flow of clean dry air saturated with highly dispersed negatively charged particles of sodium chloride. Halotherapy is beneficial for the overall wellness of a person by improving immunity, removing toxic substances from the respiratory system, improving function and appearance of the skin, and reducing stress (Panajotova & Vladeva, 2018). Since the Winslow Spa is a place that encourages the improvement of individuals’ wellness, incorporating the halogenerator is important to include in the salt room.

It is important for the Winslow Spa to provide a holistic approach to providing guests with an experience that improves their wellness. Focusing on WELL Building Standards, the colors in the interior environment, and halotherapy help create an environment that improves the health and wellness of every occupant in the space.

Design Concept Statement

The Winslow Spa is a place where guests can focus on improving their overall wellbeing. The colors seen throughout the spa create an environment where guests feel comfortable and are able to focus on their health and wellness. Neutral colors such as whites and creams are incorporated throughout the spa to provide unity and calmness. Brown and black are used in subtle ways through wood accents and dark metals to bring in the essence of an industrial farmhouse theme that coordinates with the Winslow Hotel. Cool colors such as blues and greens are incorporated throughout the spa to provide guests with a relaxing, peaceful, comfortable, and harmonious experience (Gokcakan & Gokcakan Cicek, 2016). The waiting area and relaxation lounge include an artificial green wall that provides the beneficial biophilic elements of improving one's mood, wellness, productivity, and reduced stress levels without the maintenance of living walls (Panagopoulos et al., 2020).

Design applications throughout the spa are included to support the WELL Building Standards such as controllable lighting and window treatments, automatic plumbing and restroom fixtures, acoustical solutions, and biophilia (WELL, 2022). Dry treatment rooms designed with a suspended wooden ceiling, various levels of lighting, and neutral and blue colors are available to provide a relaxing experience while guests receive their treatments. When entering the salt room, guests will be surrounded by walls covered with illuminated salt blocks. A halogenerator is installed in the salt room to provide the benefits of improved wellness, improved function and appearance of the skin, and improved immunity (Panajotova & Vladeva , 2018). Lounge chaises are available for guest to relax in to receive the benefits. Raised platforms are also available for guests who wish to meditate or do yoga in the salt room.

The overall health and safety of each guest is a high priority, and the spa is designed to be inclusive to all. The spa is designed to be accessible and inclusive with accessible height counters, designated spaces for guests in wheelchairs to be amongst other guests, 5-foot turnarounds, slip resistant flooring, flooring transitions, and grab bars (Adam, 2019) (Silva et al., 2019). Materials and finishes are easily cleanable and stain resistant, and fixtures in the locker rooms are installed to be motion sensed creating a healthy and safe environment (Andac, 2020) (Kang & Shin, 2020).

Goals & Objectives

Goal:

Incorporate applications to the Winslow Spa that encourage guests to feel relaxed from the minute they walk in to when they get ready in the locker rooms and finally when they enter the room for their desired service.

Objectives:

- Incorporate cool color tones, such as blues and greens, in spaces as these colors make individuals feel relaxed, and have peace, harmony, and comfort (Anjani et al, 2021) (Gokcakan & Gokcakan Cicek, 2016)
- Apply acoustical solutions on the floors, such as carpet, as well as acoustical wall and ceiling applications in the corridors, treatment rooms, and relaxation lounge to absorb impact noise and sounds to ensure guests can relax without hearing unwanted noise (Vardaxis et al, 2018) (Hout, 2016)
- Incorporate plants and green walls into the waiting area and relaxation lounge, to enhance focus and relaxation while also improving the guests' wellbeing (Panagopoulos et al, 2020)
- Install a halogenerator in the salt room to create an active salt room that provides the benefits of halotherapy such as improved wellness, the removal of toxic substances from respiratory system, improved function and appearance of the skin, and improved immunity (Panajotova & Vladeva, 2018)

Goal:

Create a safe, healthy, and accessible space that is inclusive to all guests visiting The Winslow Spa.

Objectives:

- Select materials and finishes that are easily cleanable and stain resistant (Andac, 2020)
- Place hand sanitizer in the reception and waiting areas and at the beverage bar in the relaxation lounge (Atzeni et al, 2021)
- Design the space to include universal design elements such as accessible height counters, space designated for guests in wheelchairs to be amongst other guests, 5-foot turnarounds, slip resistant flooring, flooring transitions, and an accessible stall and shower with grab bars (Silva et al, 2019)
- Install motion sensed faucets, soap dispensers, hand dryers, and toilet flush valves to avoid creating high touch areas (Kang & Shin, 2020)

Goals & Objectives

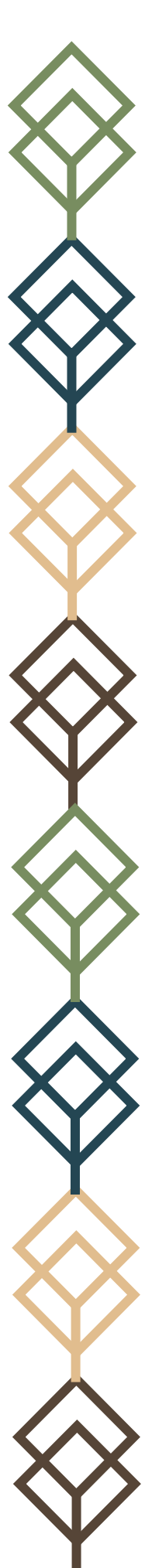
Goal:

Apply design solutions to meet the concepts of water, light, sound, mind, and community from the WELL Building Standard.

Objectives:

- Install automatic flush valves, soap dispensers, and hand dryers in the locker rooms (WELL, 2022)
- Install a foot-pull on the doors in the locker rooms (WELL, 2022)
- Select faucets that are sensor activated, equipped with a programmable line-purge system, and allows hot- and cold-water lines to be mixed at point of use (WELL, 2022)
- Install roller shades on all windows to allow occupants to be able to control the natural light entering the space (Alfuraty, 2020) (WELL, 2022)
- Incorporate different levels of lighting that can be adjusted (Kayhan et al., 2021) (WELL, 2022)
- Apply acoustical solutions with an NRC rating of 0.75 (Hout, 2016) (Vardaxis et al., 2018) (WELL, 2022)
- Incorporate green walls and wooden materials to incorporate nature into the space (Panagopoulos et al., 2020) (WELL, 2022)
- Use calming colors and textures (Anjani et al., 2021) (WELL, 2022)
- Place comfortable seating in the waiting area and relaxation lounge (WELL, 2022)

User Description



Receptionist

- Schedules appointments for guests, checks guests in when they arrive, monitors retail area, and completes transactions for guests purchasing merchandise.

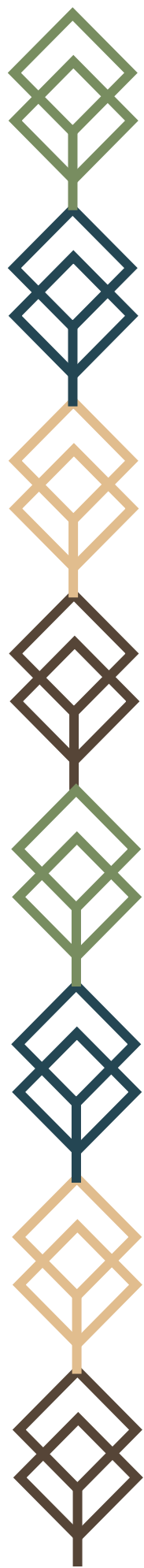
Spa Staff

- Provides treatments such as therapeutic and restorative massages, skin care, body masks, body wraps, herbal wraps, and waxing, ensures rooms are cleaned and organized, and makes sure everything is prepared for guests.

Guests

- Individuals staying at The Winslow Hotel as well as local residents of Fargo, North Dakota who want to receive holistic treatments that contribute to relaxation and wellness.

Codes Analysis Report



1. PROJECT INFORMATION		
Project Title	The Winslow Spa	
Project Address	505 North Broadway, Fargo, ND 58012	
Floor Location <i>(what floor is project on?)</i>	Second Floor	
Building Construction Type	Type III	
APPLICABLE CODES <i>(pull from city website of jurisdiction project is in)</i>		EDITION
Building Code	<input checked="" type="checkbox"/> IBC <input type="checkbox"/> Other:	2018
Local Amendments	<input checked="" type="checkbox"/> Yes <input type="checkbox"/> No	2020
Fire Code	<input checked="" type="checkbox"/> IFC <input type="checkbox"/> NFPA 1 <input type="checkbox"/> Other:	2018
Life Safety Code	Life Safety Code (NFPA 101) -	
Plumbing Code	<input type="checkbox"/> IPC <input checked="" type="checkbox"/> UPC <input type="checkbox"/> Other:	2018
Mechanical Code	<input checked="" type="checkbox"/> IMC <input type="checkbox"/> UMC <input type="checkbox"/> Other:	2018
Electrical Code	<input checked="" type="checkbox"/> NEC <input type="checkbox"/> Other:	2020
Energy Code	<input checked="" type="checkbox"/> IECC <input type="checkbox"/> NFPA 9000 <input type="checkbox"/> Other:	2018
Accessibility Regulations & Standards	<input checked="" type="checkbox"/> ADA 2010 Guidelines <input type="checkbox"/> ABA <input checked="" type="checkbox"/> ICC/ANSI A117.1: Accessible and Usable Buildings and Facilities <input type="checkbox"/> Other:	2010
Other Codes <i>(including special ordinances, health codes, historic preservation, etc.)</i>	Laws, Rules, and Wiring Standards of North Dakota International Fuel Gas Code	2020 2018
BUILDING CHARACTERISTICS		
Automatic Sprinkler System Installed [Sec 903]	<input checked="" type="checkbox"/> Yes <input type="checkbox"/> No	
Construction Type	<input type="checkbox"/> Type I <input type="checkbox"/> Type II <input checked="" type="checkbox"/> Type III <input type="checkbox"/> Type IV <input type="checkbox"/> Type V	
Protection	<input checked="" type="checkbox"/> Protected (A) <input type="checkbox"/> Unprotected (B)	
Total Building Area (sf)	51,000 sf	
Project Floor Area (sf)	3,800 sf	

Summary Code Checklist <i>(use this as your guide to code compliance in your project using the tables below)</i>	
Step 1	Determine Which Codes Are Required <ul style="list-style-type: none"> Project Information Applicable building codes Building characteristics
Step 2	Determine Accessibility Requirements
Step 3	Occupancy Requirements <ul style="list-style-type: none"> Occupancy Classification Occupant Load Review specific occupancy requirements Compare code and accessibility requirements
Step 4	Means of Egress Requirements <ul style="list-style-type: none"> Determine quantity and type of means of egress Calculate minimum widths Determine arrangement of exits Calculate travel distances Determine required signage Compare code and accessibility requirements Determine emergency lighting requirements
Step 5	Fire and Smoke Resistance Requirements <ul style="list-style-type: none"> Determine Fire Barriers/Partitions and Horizontal Assemblies Determine Smoke Barriers/Partitions Determine location of opening protectives
Step 6	Fire Protection Requirements <ul style="list-style-type: none"> Determine fire and smoke detection systems Determine required alarm system Determine types of extinguishing systems Compare code and accessibility requirements
Step 7	Plumbing Requirements <ul style="list-style-type: none"> Determine types of fixtures required Calculate number of each fixture required Determine required toilet/bathing facilities Review for finishes, accessories, and signage Compare code and accessibility requirements Review water conservation requirements
Step 8	Mechanical & Electrical Requirements <ul style="list-style-type: none"> Determine ceiling heights Determine types/locations of outlets, switches, fixtures Determine emergency power and lighting requirements Compare code and accessibility requirements Review energy efficiency compliance
Step 9	Finish and Furniture Requirements <ul style="list-style-type: none"> Review tests and type of ratings required Determine special finish requirements Determine special furniture requirements Compare code and accessibility requirements Compare requirements during selection and specification
<p>Building Codes calculations will need to be completed and updated throughout the project process. Initially, they are done to help in programming. Then, upon design development they will be checked again for compliance.</p>	

Codes Analysis Report

2. ACCESSIBILITY [IBC Ch 11]

Chapter/Section	Description
1104.3.1	Employee work areas with common use circulation paths will be accessible routes
1104.5	Accessible routes shall coincide with or be located in the same area as a general circulation path
1107.3	Rooms and spaces that are for the general public or residents of the space should be accessible.
1109.2	Toilet rooms and bathing rooms must be accessible.
1109.2.2	At least 5 percent of the total number of water closet compartments should be wheelchair accessible.
1109.2	At least 5 percent, but not less than one, of vanities should be accessible.
1109.9	For fixed or built-in storage, at least 5 percent of elements but not less than one should be accessible.
1109.11	For fixed or built-in tables, counters, or work surfaces, at least 5 percent of the seating and standing space, but not less than one, should be accessible.
1109.12.3	Point of sale or service counters should be accessible.
1109.13	Controls, operating mechanisms, and hardware that occupants operate such as switches and outlets should be accessible.
1111.1	Required accessible elements should be identified by the International Symbol of Accessibility

3. OCCUPANCY CONSIDERATIONS [IBC Ch 3 & 5]

Occupancy Classification (Check which apply)

Single Occupancy

Assembly A-1 Assembly A-2 Assembly A-3 Assembly A-4 Assembly A-5
 Business (B) Business (B) – Ambulatory Health Care Education (E)
 Factory (F) Hazardous (H) Mercantile (M) Utility (U)
 Residential R-1 Residential R-2 Residential R-3
 Institutional I-1 Institutional I-2 Institutional I-3 Institutional I-4

Multiple Occupancies

Occupancy 1 _____
 Occupancy 2 _____
 Occupancy 3 _____

Occupancy required separation [Table 508.4] Yes No
 Required hourly rating [1] _____

Incidental Use Areas [Table 509] Yes No
 List Room or Area: _____

Accessory Occupancy [Sec 508.2] Yes No
 List Room or Area: _____

Occupancy Load Calculations

Occupant load should be organized by story since each story must be provided with exits to support the OL for that story.
 Total each story for OL for entire building.

Location in Building (Room Name/ Number, etc.) List EACH individually. OK to combine 'like' uses	Floor Area ³ (sf)	Function (Use) of Space ⁴ (Table 1004.5)	Load Factor ² (sf/occupant)	Occupant Load Remember rounding rules!
Reception Waiting & Retail Area 202	89 sf	Assembly without fixed seats standing space	5 net	18 OL
Waiting Area 203	275 sf	Assembly without fixed seats unconcentrated (tables and chairs)	15 net	19 OL
Staff Area 204	202 sf	Assembly without fixed seats unconcentrated (tables and chairs)	15 net	15 OL

Prep Room 206	98 sf	Assembly without fixed seats standing space	5 net	20 OL
Environmental Service Room 207	53 sf	Accessory storage areas	300 gross	1 OL
Treatment Room One 208	132 sf	Business Area/ outpatient care?	150 gross	1 OL
Salt Room 209	295 sf	Assembly without fixed seats unconcentrated (tables & chairs)	15 net	20 OL
Treatment Room Two 210	154 sf	Business Area	150 gross	2 OL
Treatment Room Three 211	154 sf	Business Area	150 gross	2 OL
Treatment Room Four 212	141 sf	Business Area	150 gross	1 OL
Meditation Room 213	107 sf	Business Area	150 gross	1 OL
Relaxation Lounge 214	181 sf	Assembly without fixed seats unconcentrated (tables & chairs)	15 net	13
Treatment Room Five 215	165 sf	Business Area	150 gross	2 OL
Men's Locker Room 216	322 sf	Locker Room	50 gross	7 OL
Women's Locker Room 217	323 sf	Locker Room	50 gross	7 OL

Occupant Load for Fixed Seats [Sec 1004.6]

Area 1 _____ Fixed Seats Continuous Arms Booth
 Show Calculations: _____

Area 2 _____ Fixed Seats Continuous Arms Booth
 Show Calculations: _____

Total Occupant Load for [2] Floor Spa 129

-Total Occupant Load for Building -

NOTES:

- The 2018 IBC makes a distinction between "gross" and "net" areas for calculating occupant load.
- "Gross" areas include wall thicknesses and utility spaces (chases, shafts, mechanical/electrical spaces, etc.).
- Use only whole numbers for areas; round to nearest whole foot.
- Use the most stringent USE of the space. Not the Occupancy Classification.

4. MEANS OF EGRESS [IBC Ch 10]

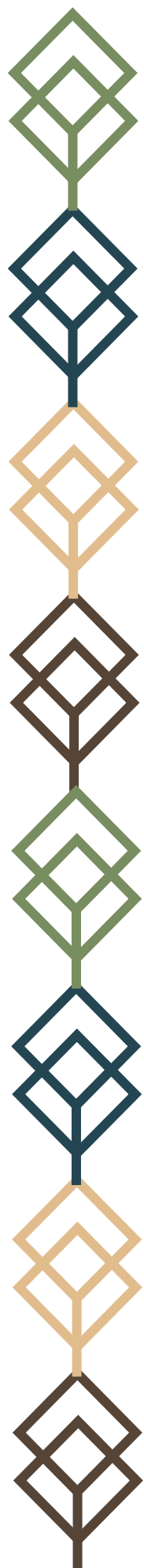
Travel Distances	Maximum Travel Distance [Table 1017.2] allowed per IBC	300'
	Travel Distance provided per print	
	A-1	75'-10"
	B-2	81'-2"
	C-1	100'-3"
	C-2	81'-0"
	D-2	42'-0"
	Maximum Common Path of Travel Allowed per IBC [Table 1006.2.1 or 1006.3.3(2)]	100'
	Dead End Corridor Length (Sec 1020.4) allowed per IBC <input type="checkbox"/> 20' <input checked="" type="checkbox"/> 50' <input type="checkbox"/> Other _____	
	Maximum Dead End Corridor Length provided per print	37'-1"

Exit Requirements	Required Number of Exits [Table 1006.3.2] <input type="checkbox"/> 1 <input checked="" type="checkbox"/> 2 <input type="checkbox"/> 3 <input type="checkbox"/> 4
	Single Exit Allowed [Table 1006.2.1 & 1006.3.2(2)] <input type="checkbox"/> Yes <input checked="" type="checkbox"/> No

Total Exit Widths Required Calculations [Sec 1005]

Room/Space/Story (Room Name/ Number, etc.)	Occupant Load (for room/space/story)	Egress Type (Door, Stairway, Corridor)	Egress Width Variable	Calculated Width (OL x egress width variable = calculated width)	Required Width (per code)	Provided Width (on plan)
Reception Waiting & Retail Area 202	18 OL	Door	0.2	3.6"	36"	36"

Codes Analysis Report



Waiting Area 203	19 OL	Corridor	0.2	3.8"	44"	110"
Staff Area 204	15 OL	Door	0.2	3"	36"	36"
Prep Room 206	20 OL	Door	0.2	4"	36"	36"
Environmental Service Room 207	1 OL	Door	0.2	0.2"	36"	36"
Treatment Room One 208	1 OL	Door	0.2	0.2"	36"	36"
Salt Room 209	20 OL	Door	0.2	4"	36"	36"
Treatment Room Two 210	2 OL	Door	0.2	0.4"	36"	36"
Treatment Room Three 211	2 OL	Door	0.2	0.4"	36"	36"
Treatment Room Four 212	1 OL	Door	0.2	0.2"	36"	36"
Meditation Room 213	1 OL	Door	0.2	0.2"	36"	36"
Relaxation Lounge 214	13	Corridor	0.2	2.6"	44"	54"
Treatment Room Five 215	2 OL	Door	0.2	0.4"	36"	36"
Men's Locker Room 216	7 OL	Door	0.2	1.44"	36"	36"
Women's Locker Room 217	7 OL	Door	0.2	1.44"	36"	36"

Remoteness of Exits Determined by [Sec 1007] (Check one)
 1/2 Diagonal Rule – required distance [x] 1/3 Diagonal Rule – required distance [35'-3"]
 [105'-10"] Overall Diagonal of area calculating (space, tenant, or floor)
 [98'-6"] Provided distance between exit

Area of Refuge [Sec 1009.3.3]
 Yes Not required No – automatic sprinkler system provided

Means of Egress Components to Research (indicate applicable information to your project below)

- Doors: Type, swing, hardware, threshold, clearances, fire rating
- Stairs: Type, riser height, tread depth, nosing, width, handrail
- Ramps: Slope rise, landing, width, edge detail, finish, handrail, guard
- Corridors: Length, width, fire resistance rating
- Aisles: Fixed seats no fixed seats, ramp/stepped or flat, handrails
- Intervening Rooms: Allowed, maximum number, maximum distance
- Signage and Lighting: Exit signs, photoluminescent markings, emergency lighting, evacuation diagrams
- Special Occupancy Egress Requirements: Assembly, institutional, healthcare, detention center, other

Chapter/Section	Description
1003.2	Ceiling heights should not be less than 7 feet 6 inches above the finished floor.
1004.4	When a building contains two or more occupancies, the means of egress components will apply to each portion of the building based on occupancy of the space. If two or more occupancies utilize the same means of egress system, the components shall meet the more stringent requirements.
1005.7.1	When doors are fully opened, they should not reduce the required width by more than 7 inches. Doors in any position should not reduce the required width by more than one-half
1007.1.1	When two exits, exit access doorways, exit access stairways, ramps, or any combination of them are required and is equipped throughout with an automatic sprinkler system, there should be a distance apart equal to not less one-third of the length of the maximum diagonal dimension of the area.
1008.2	The means of egress shall be illuminated at all times in the room or space except for dwelling and sleeping units in Group R-1.
1009.1	Accessible spaces should be provided with not less than one accessible means of egress.
1010.1.1	The required capacity of each door should be sufficient for the occupant load and should provide a minimum clear opening width of 32 inches. Door openings in sleeping units should have a minimum clear opening height of 78 inches. The minimum clear opening width does not apply to doors for nonaccessible toilet stalls.

1010.1.1.1	There cannot be projections into the required clear opening width lower than 34 inches above the finished floor. Projections into the clear opening between 34 inches and 80 inches above the floor can't exceed 4 inches. Door closers and doorstops can be permitted to be 78 inches minimum above the floor.
1010.1.2	Egress doors should be of the pivoted or side-hinged swinging type.
1010.1.2.1	Pivot or side-hinged swinging doors should swing in the direction of egress when serving in a room or area with an occupant load of 50 or more people.
1010.1.9.1	Door handles, pulls, latches, locks, and other operating devices on doors that should be accessible by chapter 11 should not require tight grasping, tight pinching or twisting of the wrist.
1010.1.9.2	Door handles and other operating devices should be installed 34 inches minimum and 48 inches maximum above the finished floor.
1013.1	Exits and exit access doors should be marked by an approved exit sign readily visible from any direction of egress travel.
1013.3	Exit signs should be internally or externally illuminated.
1016.2	Egress from a room or space should not pass through adjoining or intervening rooms or area.
1017.2	The exit access travel distance for Group B is 300 feet.
1020.4	Dead end corridors should not exceed 50 feet when the building is equipped with an automatic sprinkler system.
1022.2.2	Exterior exit doors should lead directly to the exit discharge or public way.
1028.1	Exits should discharge directly to the exterior of a building.

5. FIRE RESISTANCE ASSEMBLIES [IBC Ch 7, 9, 10]

*The type of assembly required indicated below does not include spaces above/below. Adjust accordingly with horizontal assemblies.

	Location (room name/number)	Hourly Rating & Type of Assembly Required
Occupancy Separation(s) [Table 508.4]	Between Hotel, Spa, and Shared Space	<input checked="" type="checkbox"/> 1 hr Fire Barrier <input type="checkbox"/> 2 hr Fire Barrier <input type="checkbox"/> NP <input type="checkbox"/> N
Incidental Use Areas [Table 509] *See part 3 above. Same spaces but here you indicate rating.	-	<input type="checkbox"/> 1 hr Fire Barrier <input type="checkbox"/> 2 hr Fire Barrier <input type="checkbox"/> Automatic sprinkler system installed
	-	<input type="checkbox"/> 1 hr Fire Barrier <input type="checkbox"/> 2 hr Fire Barrier <input type="checkbox"/> Automatic sprinkler system installed
Vertical Shaft Enclosures [Sec 713] Exit Stairway(s) [Sec 713]	Main entry elevator located SW side of the space	<input checked="" type="checkbox"/> 1 hr Fire Barrier <input type="checkbox"/> 2 hr Fire Barrier
	Main stairway located SW side of space	<input checked="" type="checkbox"/> 1 hr Fire Barrier <input type="checkbox"/> 2 hr Fire Barrier
Corridors for Exiting [Sec 1020]	All Corridors	<input checked="" type="checkbox"/> 0 <input type="checkbox"/> 30 min Fire Partition <input type="checkbox"/> 1 hr Fire Partition <input type="checkbox"/> Not permitted
Interior Exit Stairways and Ramps [Sec 1023]	-	<input type="checkbox"/> 1 hr Fire Barrier <input type="checkbox"/> 2 hr Fire Barrier
Exit Passageway(s) [Sec 1024]	-	<input type="checkbox"/> 1 hr Fire Barrier <input type="checkbox"/> 2 hr Fire Barrier <input type="checkbox"/> ___ hr Fire Barrier
Horizontal Exit(s) [Sec 1026]	-	<input type="checkbox"/> 2 hr Fire Barrier <input type="checkbox"/> ___ hr Fire Barrier
Other [Chapter 4]:	-	

Opening Protectives [Section 716, Table 716.1(2)] (Rated assemblies indicated above require proper opening protectives. List all that apply)

	Location (room name/number)	Type of Wall Assembly Penetrating	Hourly Rating Required
Rated Door Assemblies	Reception	1 hr rated fire barrier	3/4 hr
	Back Corridor into shared space	1 hr rated fire barrier	3/4 hr
Rated Glazing & Frames	-	-	-

6. FIRE PROTECTION SYSTEMS [IBC Ch 7, 9, 10]

Codes Analysis Report

Visual/Audible Alarms [Sec 907.5.2.3]	<input type="checkbox"/> Provided in all public and common use areas (Sec 907.5.2.1) <input type="checkbox"/> Required to be in habitable dwelling and sleeping units per table 907.5.2.3.2. Number required [x] Other:
Carbon Monoxide Detectors [Sec 915]	<input type="checkbox"/> Installed in dwelling units, sleeping units, classrooms containing fuel burning appliance or fireplace (915.1.2) <input type="checkbox"/> Installed in dwelling units, sleeping units, and classrooms served by fuel-burning forced air (915.1.3) <input type="checkbox"/> Installed in private garages attached to dwelling unit, sleeping units and classrooms (915.1.5) <input type="checkbox"/> Installed in dwelling units outside each separate sleeping area and vicinity of bedrooms (915.2.1) <input type="checkbox"/> Installed in each sleeping unit (915.2.2) <input type="checkbox"/> Installed in classrooms (Group E) (915.2.3) <input type="checkbox"/> Other:
Automatic Smoke Detection [Sec 907]	<input type="checkbox"/> Smoke Detection System required. Distance [x] <input checked="" type="checkbox"/> Smoke Detection System not required due to automatic sprinkler system exception
Portable Fire Extinguishers [Sec 906, Table 906.3(2)]	<input checked="" type="checkbox"/> Wall Mounted <input type="checkbox"/> Cabinet Distance to travel to reach fire extinguisher cannot exceed [75ft] <input checked="" type="checkbox"/> Installed in a conspicuous, unobstructed, and unobscured location [Sec 906.5 & 906.6]
Manual Fire Alarm Boxes [Sec 907.4.2]	<input type="checkbox"/> Manual Fire Alarm pull box required. Distance [x] from each exit. <input type="checkbox"/> No automatic sprinkler system – additional installed so travel distance does not exceed 200' <input checked="" type="checkbox"/> Manual Fire Alarm pull box not required due to automatic sprinkler system exception
Other:	-

7. PLUMBING [IBC Ch 29 & IPC Ch 4]

Plumbing Fixture Calculations

(If multiple floors/tenant spaces exist, you must have multiple charts.)

Fixture Type	Fixture Ratio [Table IBC 2902.1]	Fixtures Required				Total Required	
		Standard		Accessible [Sec 1109]		Male	Female
		Male	Female	Male	Female		
Water Closets*	1 per 25 for the first 50 and 1 per 50 for the remainder existing 50	2	2	1	1	3	3
*Urinal (sub for %)			-		-		-
Lavatories	1 per 40 for the first 80 and 1 per 80 for the remainder exceeding 80	1	1	1	1	2	2
Bathtubs/Showers	-	-	-	-	-	-	-
Drinking Fountain							
Service Sink	-		-		-		-
Other:							

Plumbing Elements to Research (indicate applicable information to your project below)

- Fixtures: Mounting heights, clear floors pace, faucet/control locations, projections, water consumption
- Faucet/Controls: Ease of operation (i.e. lever, automatic, etc.) water consumption, water temp control
- Grab Bars: Location, lengths, heights, orientation, additional required for use
- Accessories: Mounting heights control locations, projections, clear floor space
- Finishes: Smooth/nonabsorbent, slip resistant, thresholds, special locations
- Room: Turning space, overlapping clear floor space, privacy, signage, stall size, door swing

Chapter/Section	Description
IBC 2902.3	Employee toilet facilities can be separate or combined employee and public toilet facilities.

IBC 2902.3.6	When a toilet room is provided for multiple occupants, the egress door should not be lockable from the inside of the room. This does not apply for family or assisted- use toilet rooms.
IBC 2902.4	Public facilities will have signs that designate who can use the facilities. Signs should be visible and located near the entrance of the toilet facility.
IBC 2902.4.1	Directional signage for public toilet facilities should be posed in the lobby, corridor, or similar spaces and are easily seen.
IPC 402.1	Plumbing fixtures should be constructed of approved materials with smooth, impervious surfaces, and free from defects and concealed fouling surfaces. The fixtures should conform to standards cited in the code. Porcelain enameled surfaces on plumbing fixtures should also be acid resistant.
IPC 403.2	Separate facilities are not required when rooms have water closets and lavatory fixtures that are designed for both sexes and there is privacy for water closets in accordance with section 405.3.4.
IPC 404.1	Accessible plumbing facilities and fixtures should be provided in accordance with Chapter 11 of the IBC.
IPC 404.3	Water supply and drainpipes under accessible lavatories and sinks should be covered or configured to protect against contact. Pipe coverings need to comply with ASME A112.18.9 or ASTM C1822
IPC 405.3.1	Water closets, urinals, or lavatories should not be set closer than 15 inches from its center to any side wall, partition, vanity, or other obstruction. There must a minimum of 21 inches clearance in front of water closets, urinals, or lavatories to any wall, fixture or door. Water closet compartments should not be less than 30 inches in width and not less than 56 inches in depth for wall-hung water closets.
IPC 405.3.4	Each water closet used by the public or employees must have a separate compartment with walls or partitions and a door to enclose the fixture and provide privacy. This does not apply for single-occupant toilet rooms with a lockable door.
IPC 421.4	Shower compartments should not be less than 30 inches in least dimension as measured from the finished interior dimension of the compartment not included fixtures.
IPC 421.4.1	Shower floors and wall areas should be constructed of smooth, corrosive resistant, and non-absorbent waterproof materials. Wall materials should extend to a height of not less than 6 feet above the room floor level and not less than 70 inches above the drain of the shower.
IPC 421.4.2	The access and egress opening should have a clear and finished width of not less than 22 inches. Shower compartments required to be accessible will conform to Section 404.1
IPC 425.2	Water closets bowls for the public or employees should be the elongated type.
IPC 425.3	Water closet seats should be a smooth and nonabsorbent material. The seats for public or employee toilet facilities should be the hinged open-front type.

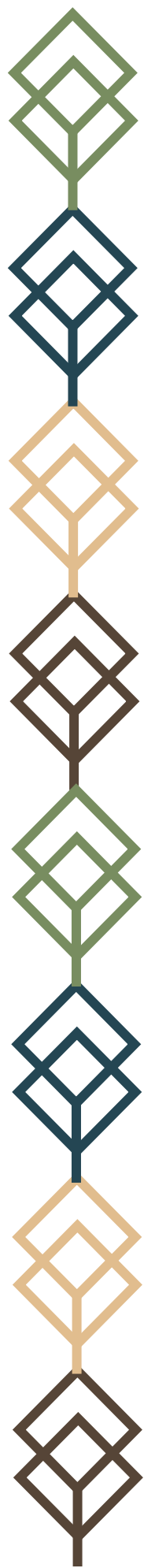
8. Mechanical & Electrical Requirements

Special Types of Outlets and/or Circuits		Mounting Height(s):
<input checked="" type="checkbox"/> Dedicated outlets		15" A.F.F
<input checked="" type="checkbox"/> Ground fault circuit Interrupter (GFCI)		3'-6" A.F.F
<input type="checkbox"/> Arc fault circuit interrupter (AFCI)		
<input type="checkbox"/> Tamper-resistant outlets		
<input type="checkbox"/> Other		

Research Additional Mechanical & Electrical Elements (indicate applicable information to your project below)

Chapter/Section	Description
IBC 2902.3	Employee toilet facilities can be separate or combined employee and public toilet facilities.
IBC 2902.4	Public facilities will have signs that designate who can use the facilities. Signs should be visible and located near the entrance of the toilet facility.
IBC 2902.4.1	Directional signage for public toilet facilities should be posed in the lobby, corridor, or similar spaces and are easily seen.
IPC 402.1	Plumbing fixtures should be constructed of approved materials with smooth, impervious surfaces, and free from defects and concealed fouling surfaces. The fixtures should conform to standards cited in the code. Porcelain enameled surfaces on plumbing fixtures should also be acid resistant.
IPC 403.2	Separate facilities are not required when rooms have water closets and lavatory fixtures that are designed for both sexes and there is privacy for water closets in accordance with section 405.3.4. Urinals should be visually separated from the rest of the facility or located in a stall.

Codes Analysis Report



IPC 404.1	Accessible plumbing facilities and fixtures should be provided in accordance with Chapter 11 of the IBC.
IPC 404.3	Water supply and drainpipes under accessible lavatories and sinks should be covered or configured to protect against contact. Pipe coverings need to comply with ASME A112.18.9 or ASTM C1822
IPC 405.3.1	Water closets, urinals, or lavatories should not be set closer than 15 inches from its center to any side wall, partition, vanity, or other obstruction. There must a minimum of 21 inches clearance in front of water closets, urinals, or lavatories to any wall, fixture, or door. Water closet compartments should not be less than 30 inches in width and not less than 56 inches in depth for wall-hung water closets.
IPC 405.3.4	Each water closet used by the public or employees must have a separate compartment with walls or partitions and a door to enclose the fixture and provide privacy. This does not apply for single-occupant toilet rooms with a lockable door.
IPC 425.2	Water closets bowls for the public or employees should be the elongated type.
IPC 425.3	Water closet seats should be a smooth and nonabsorbent material. The seats for public or employee toilet facilities should be the hinged open-front type.

9. INTERIOR FINISHES [IBC Ch 8, 12, 21, 23, 24, 25, 26]

Interior Wall and Ceiling Finish Classification [Table 803.11]

Interior Exit Stairways, Ramps & Exit Passageways	<input type="checkbox"/> Class A	<input checked="" type="checkbox"/> Class B	<input type="checkbox"/> Class C
Corridors & Enclosure for Exit Access Stairways & Ramps	<input type="checkbox"/> Class A	<input type="checkbox"/> Class B	<input checked="" type="checkbox"/> Class C
Rooms & Enclosed Spaces	<input type="checkbox"/> Class A	<input type="checkbox"/> Class B	<input checked="" type="checkbox"/> Class C
Exceptions Indicated (<i>list</i>)			
Interior Floor Finish [Sec 804]	<input type="checkbox"/> Class/Type I	<input checked="" type="checkbox"/> Class/Type II	

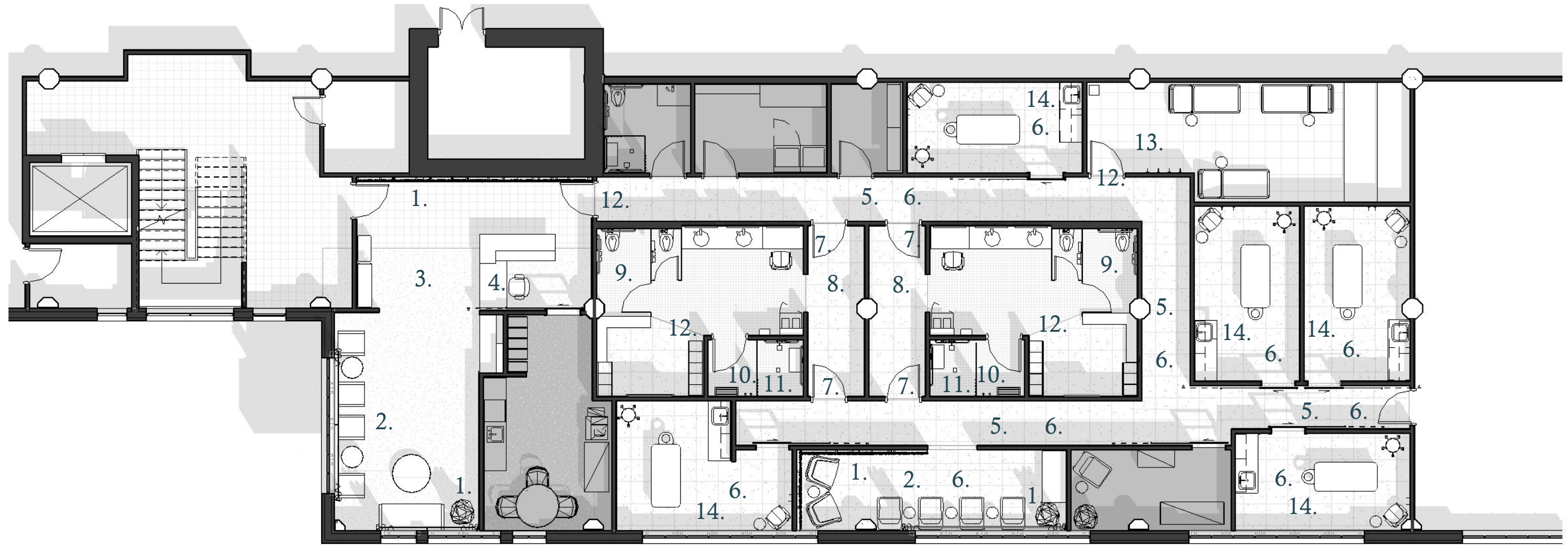
Interior Finishes to Research (*indicate applicable information to your project below*)

<ul style="list-style-type: none"> ▪ Wallcoverings: Vinyl, textile, expanded vinyl, carpet, etc. ▪ Stretch Fabric Systems ▪ Light Transmitting Plastics Wood Paneling/Veneers ▪ Decorative Molding/Trim ▪ Curtains, Draperies, Fabric Hangings, etc. ▪ Interior Trim 	<ul style="list-style-type: none"> ▪ Floor-Wall Base ▪ Suspended Ceiling System ▪ Carpet: Broadloom, tile, padding ▪ Hardwood & Resilient flooring ▪ Foam plastics ▪ Furniture
--	--

Chapter/Section	Description
803.1.1	Interior wall and ceiling finish materials are classified in accordance with NFPA 286.
803.1.2	Interior wall and ceiling finish materials are classified in accordance with ASTM E84 or UL 723. These interior finishes are group in classes according to their flame spread and smoke-developed indices. The classes are A, B, and C.
803.2	Materials with a thickness less than 0.036 inch that are applied directly to the surface of walls or ceilings are not required to be tested.
803.5	Textile wall covers that are used as interior wall finishes should be tested in the manner for intended use, using the product mounting system, including adhesive, and shall comply with requirements of one of the following: 803.1.1, 803.5.1, or 803.5.2
803.5.1	Textile wall coverings should meet the requirements of 8.5.1.1 when tested in the manner intended for use in accordance with Method B protocol of NFPA 265 using the product mounting system, including adhesive.
803.5.1.1	Interior finishes should comply with NFPA 265.
803.5.2	Textile wall and ceiling coverings and expanded vinyl wall and ceiling coverings should have a Class A flame spread index in accordance with ASTM E84 or UL 723 and be protected by an automatic sprinkler system installed in accordance with Section 903.1.1 or 903.1.2.
803.11	Laminated products that are factory produced with a wood substrate should comply with one of the following: Either the laminated product meets criteria of 803.1.1 when tested in accordance with NFPA 286 or the laminated product shall have a Class A, B, or C flame spread index and smoke-developed index, in accordance with ASTM E84 or UL 723.
804.2	Interior floor finishes and floor coverings shall be classified in accordance with ASTM E648 or NFPA 253.

806.7	Materials other than foam plastic used for interior trim, should have a minimum Class C flame spread and smoke-developed index when tested in accordance with ASTM E84 or UL 723.
806.8	Interior floor-wall base that is 6 inches or less in height should be tested in accordance with 804.2 and shall not be less than Class II.
1204.1	Every space intended for human occupancy should be provided with natural light by means of exterior glazed openings or shall be provided with artificial light in accordance with Section 1204.3.
1204.3	Artificial light shall be provided to provide an average illumination of 10 footcandles over the area at a height of 30 inches above the floor level.
1207.2	Occupied spaces, habitable spaces, and corridors should have a ceiling not less than 7 feet 6 inches above the finished floor. Bathrooms, toilet rooms, kitchens, storage rooms, and laundry rooms should have a ceiling not less than 7 feet above the finished floor.
1209.2.1	Other than dwelling units, toilet, bathing, and shower rooms should have floor finish materials that have a smooth, hard, nonabsorbent surface. Intersections of such floors with walls should have a smooth, hard, nonabsorbent vertical base that extends upward onto the wall not less than 4 inches.
1209.2.2	Walls and partitions within two feet of service sinks, urinals, and water closets should have a smooth, hard, a nonabsorbent surface to a height of not less than 4 feet above the finished floor. These materials should not be affected by moisture.
1209.3.1	Each water closet utilized by the public or employees should occupy a separate compartment with walls or partitions and a door enclosing the fixtures to ensure privacy.

Annotated Rendered FF&E Plan



1. Plants and green wall enhance focus and relaxation and improve guests' well being (Panagopoulos et. al., 2020) (WELL, 2022)
2. Comfortable seating is placed in the waiting area and relaxation lounge (WELL, 2022)
3. Receptionist is able to see and monitor retail area
4. Accessible transaction counter (Silva et. al., 2019)
5. Corridors have acoustical ceiling tile that has an NRC rating of 0.85 (Hout, 2016) (Vardaxis et. al, 2018) (WELL, 2022)
6. Carpet is installed in corridors to absorb walking noises as well as in the treatment rooms and relaxation lounge to help absorb impact noise to avoid sound annoyance for guests (Vardaxis et. al., 2018)
7. Locker room doors have a foot-pull installed for easy access (WELL, 2022)
8. Privacy upon entry
9. Accessible bathroom stall with grab bars (Silva et. al., 2019)
10. Area to dress after showering
11. Grab bars and foldable bench installed in the shower (Silva et. al., 2019)
12. Flooring transitions with change in flooring heights (Silva et. al., 2019)
13. Slip resistant flooring (Silva et. al., 2019)
14. Carpet with added cushioning to support staff

Reception & Waiting Area



Artificial green wall for biophilic benefits of enhanced focus, relaxation, and improved wellbeing with less maintenance (Panagopoulos et. al., 2020) (WELL, 2022)

Layered lighting that occupants can control for personal preference (Engineer, 2021)

Accessible height counter (Silva et. al., 2019) (Adam, 2019)

GW-1 Artificial Green Wall

WB-1 Wall Base

Salt Room



Salt room with a halogenerator provides the benefits of halotherapy such as improved wellness, removing toxic substances from respiratory system, improved function and appearance of the skin, and improved immunity (Panajotova & Vladeva, 2018)

Raised platform for yoga or meditation



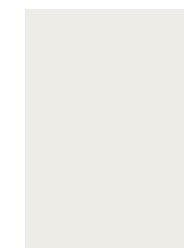
CLC-1
Chaise
Lounge
Chair



T-3
Side Table



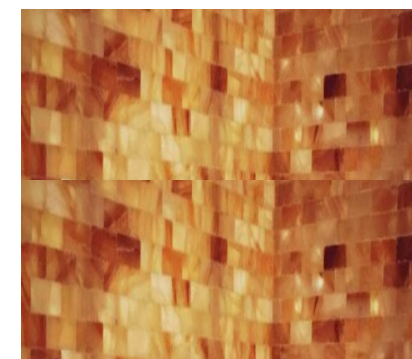
H-2
Hook



PT-2
Ceiling Paint



HAL-1
Halogenerator

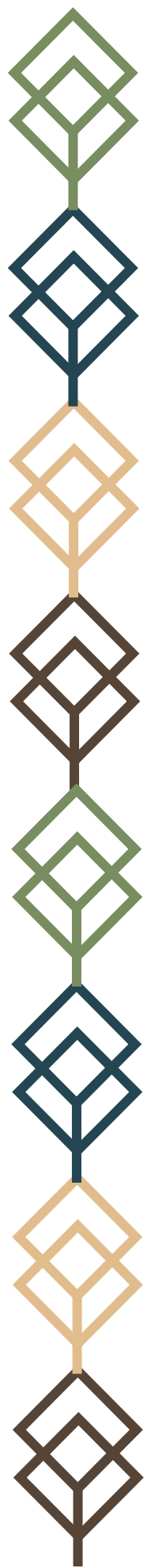


SW-1
Salt Wall

LVT-1
Luxury
Vinyl
Tile
Flooring



Relaxation Lounge



Artificial green wall for biophilic benefits of enhanced focus, relaxation, and improved wellbeing with less maintenance (Panagopoulos et. al., 2020) (WELL, 2022)

Green colors provide a calming, relaxing, and refreshing experience (Gokcakan & Gokcakan Cicek, 2016)

Utilize natural light when possible (Kayhan et. al., 2021)

Window treatments installed to control natural lighting when needed (Alfuraty, 2020) (WELL, 2022)

Preserved existing blonde brick and concrete columns to keep historical aspect of the building and reduce amount of waste in the landfill (Alfuraty, 2020)

Comfortable and relaxing furniture (WELL, 2022)

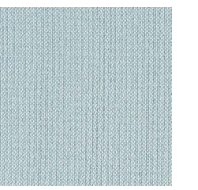
SWC-1 Suspended Wood Ceiling

CPT-2 Carpet Tile

Treatment Room



MT-1
Massage Table



STL-1
Stool



T-3
Side Table



C-4
Side
Chair



H-2
Hook

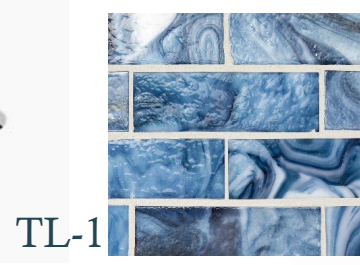


FC-2
Sink
Faucet



SC-1
Wall
Sconce

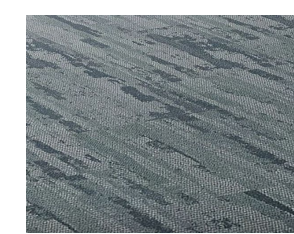
SK-2
Sink



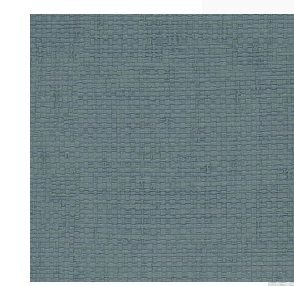
TL-1
Backsplash Tile



P-2
Pendant



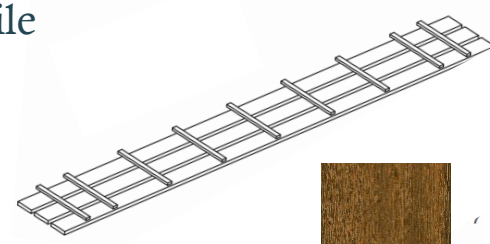
CPT-2
Carpet Tile



WC-2
Vinyl Wall Covering



WC-1
Vinyl Wallcovering



SWC-1
Suspended Wood Ceiling



Layered lighting that occupants can control for personal preference (Engineer, 2021) (WELL, 2022)

Cool colors and neutral tones for guests to feel relaxed, calm, and at peace (Anjani et al, 2021) (Gokcakan & Gokcakan Cicek, 2016)

Acoustical solutions such as carpet tile, wallcoverings, and suspended ceiling help absorb sounds (Vardaxis et. al., 2018)

Women's Locker Room



FS-1
Floating Shelf

TC-1
Trash Can & Towel Bin

HD-1
Hand Dryer

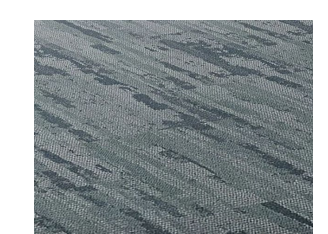
C-4
Side
Chair



LO-1
Locker



B-1
Custom Made Bench



CPT-2
Carpet Tile



WC-2
Vinyl Wall
Covering



RC-2
Wet Rated
Recessed Can



SPD-1
Soap
Dispenser

FC-1
Faucet

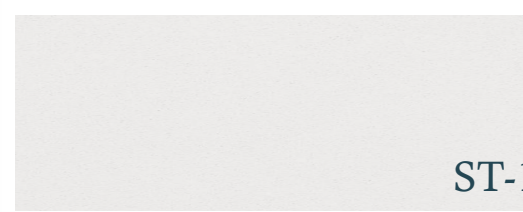


PT-1
Wall
Paint

PT-2
Ceiling
Paint



WC-1
Vinyl
Wallcovering



ST-1
Stone Countertop

SK-1
Sink



MR-1
Mirror



TL-1
Wall Tile

TL-2
Floor
Tile

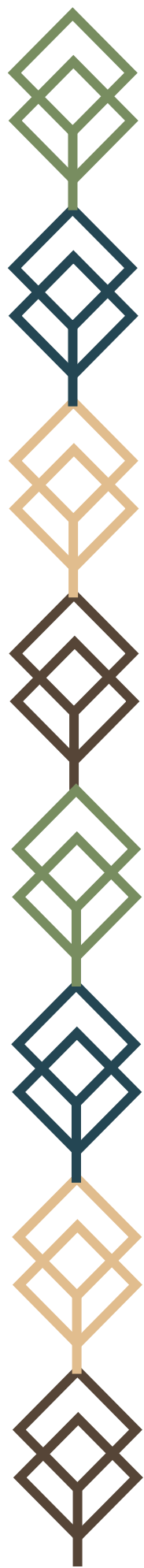


Motion sensed faucets, soap dispensers, and hand dryer to avoid high touch areas (Kang & Shin, 2020) (WELL, 2022)

Finishes and materials the help make a positive impact on the earth (Atzeni et. al., 2021)

High quality and durable materials (Andac, 2020)

FF&E Schedules




FF&E Schedule	
Code	B-1
Description	Bench
Manufacturer	Dakota Timber Company
Item/Model Name	Custom Bench
Item/Model Number	N/A
Dimension/Size	Custom corner bench, see construction documents
Quantity	2
Finish/Color	Walnut Black Metal
Description	N/A
Location	Men's Locker Room 216 (1) Women's Locker Room 217 (1)
Notes	See elevation for installation height



*See renderings for more accurate depiction


FF&E Schedule	
Code	B-2
Description	Bench
Manufacturer	Freedom Showers
Item/Model Name	24" x 15" Folding Shower Bench
Item/Model Number	APFSSB-240150PW
Dimension/Size	24"w x 15"d
Quantity	2
Finish/Color	Satin Stainless Steel Frame Phenolic White Top Finish
Description	Designed to support loads in excess of 250 lbs.
Location	Men's Locker Room 216 (1) Women's Locker Room 217 (1)
Notes	See elevation for installation height

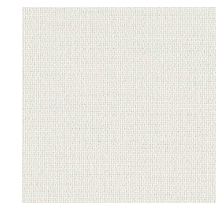


FF&E Schedule	
Code	C-1
Description	Lounge Chair
Manufacturer	OFS
Item/Model Name	Armless Lounge Chair, Single Textile
Item/Model Number	C202041
Dimension/Size	27"w x 29"d x 34"h
Quantity	2
Finish/Color	Base: Powder Coat, Onyx Seat: Concertex Pascal Dunes
Description	-OSF has WELL certification Upholstery -Face, 100% Silicone; Middle, 100% Polyurethane -Backing: 100% Polyester -Width: 54" -Abrasion: 200,000+ Wyzenbeek Double Rubs -Lightfastness: 200+ hours -Flammability: CA Bulletin 117-2013, UFAC/NFPA 260; IMO A652(16) 8.2 -Environmental: DMF Free, PVC/Phthalates Free, No added FR/Anti-Bacterial -Complies with Healthier Hospitals & Cal 01350 
Location	Waiting Area 203 (2)
Notes	Cleaning: W/S, Bleach (4:1)

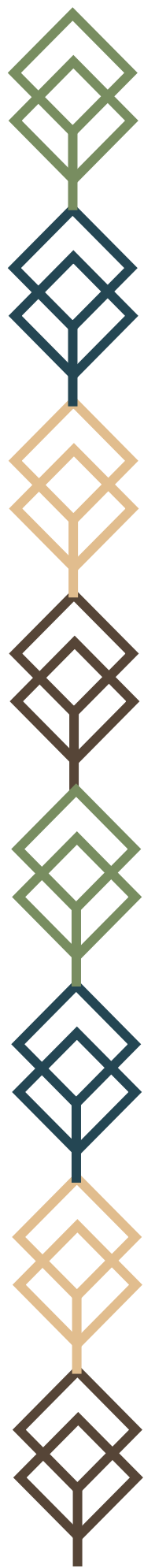


Onyx
Powder coat - Standard

FF&E Schedule	
Code	C-2
Description	Lounge Chair
Manufacturer	OFS
Item/Model Name	Lounge Chair with Arms
Item/Model Number	C202141
Dimension/Size	27"w x 29"d x 34"h
Quantity	2
Finish/Color	Base: Powder Coat, Onyx Seat: Designtex, Rocket, Linen
Description	-OSF has WELL certification Upholstery -28% Polyester, 72% Polyester (Postconsumer Recycled) -Finish: Nanotechnology Stain Resistant -Width: 54" -Flammability: ASTM 84 Unadhered Class A, CA TB 117-2013, UL Listed -Abrasion: 100,000 Wyzenbeek Double Rubs -Lightfastness: 40 Hours 
Location	Waiting Area 203 (2)
Notes	Cleaning: Water-based/Solvent



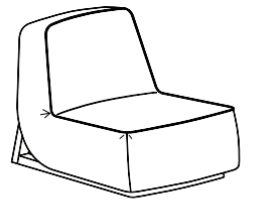
Onyx
Powder coat - Standard



FF&E Schedule	
Code	C-3
Description	Task Chair
Manufacturer	Room & Board
Item/Model Name	Lira Office Chair
Item/Model Number	10010443
Dimension/Size	Overall Height: 33-38" Overall Width: 21" Overall Depth: 23" Seat Height: 18-23" Seat Depth: 16"
Quantity	1
Finish/Color	Fabric: Tepic Navy Frame: Graphite
Description	Fabric Content: 100% Polypropylene -GREENGUARD Gold Certification -ACT® contract grade -Suitable for commercial environments -Stain resistant -Fade resistant -30,000 double rubs
Location	Reception Waiting & Retail Area 202 (1)
Notes	-Cleaning: diluted bleach cleanable



FF&E Schedule	
Code	C-5
Description	Lounge Chair
Manufacturer	JSI
Item/Model Name	Single Seat Low Lounge
Item/Model Number	INS3627-27
Dimension/Size	Overall: 27"w x 36"d x 27"h Seat: 27"w x 23"d x 27"h
Quantity	2
Finish/Color	Base: White Oak, White Wash Seat: DesignTex, Rocket, Linen
Description	Chair -GREENGUARD Certification Upholstery -28% Polyester, 72% Polyester (Postconsumer Recycled) -Finish: Nanotechnology Stain Resistant -Width: 54" -Flammability: ASTM 84 Unadhered Class A, CA TB 117-2013, UL Listed -Abrasion: 100,000 Wyzenbeek Double Rubs -Lightfastness: 40 Hours ☑ ☑ ☑ ☑ ☑
Location	Relaxation Lounge 214 (2)
Notes	Cleaning: Water-based/Solvent



FF&E Schedule	
Code	C-4
Description	Chair
Manufacturer	Herman Miller
Item/Model Name	Betwixt Chair with Arms
Item/Model Number	LN10AUUBK21142114OU
Dimension/Size	Overall Height: 29.25", Overall Width: 18.5", Overall Depth: 19" Seat Height: 18.75", Seat Depth: 17", Arm Height: 7"
Quantity	7
Finish/Color	Base: Black Seat: Alpine, 2115
Description	-Healthier Hospitals Compliant -LBC Red List Compliant -PVC Free -FR Free -Low Emitting -100% foc semi aniline leather -100,000 double rubs -Lightfastness: 40 hours -PFAS-Free Textile -Contains Bio-Based Materials
Location	Treatment Rooms 208, 210, 211, 212, 215 (5, 1 in each room) Men's Locker Room 216 (1) Women's Locker Room 217 (1)
Notes	N/A

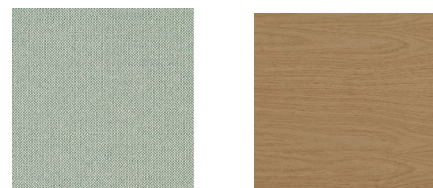


FF&E Schedule	
Code	C-6
Description	Lounge Chair
Manufacturer	JSI
Item/Model Name	Single Seat Low Lounge
Item/Model Number	INS3627-27
Dimension/Size	Overall: 27"w x 36"d x 27"h Seat: 27"w x 23"d x 27"h
Quantity	2
Finish/Color	Base: White Oak, White Wash Seat: DesignTex, Rocket, Olivine
Description	Chair -GREENGUARD Certification Upholstery -28% Polyester, 72% Polyester (Postconsumer Recycled) -Finish: Nanotechnology Stain Resistant -Width: 54" -Flammability: ASTM 84 Unadhered Class A, CA TB 117-2013, UL Listed -Abrasion: 100,000 Wyzenbeek Double Rubs -Lightfastness: 40 Hours ☑ ☑ ☑ ☑ ☑
Location	Relaxation Lounge 214 (2)
Notes	Cleaning: Water-based/Solvent





FF&E Schedule	
Code	C-7
Description	Lounge Chair
Manufacturer	JSI
Item/Model Name	Single Seat with Headrest
Item/Model Number	INS3236-38
Dimension/Size	Overall: 36"w x 32.5"d x 38"h Seat: 25"w x 22.5"d x 17.25"h
Quantity	2
Finish/Color	Base: White Oak, White Wash Seat: Designtex, Rocket, Olivine
Description	Chair -GREENGUARD Certification Upholstery -28% Polyester, 72% Polyester (Postconsumer Recycled) -Finish: Nanotechnology Stain Resistant -Width: 54" -Flammability: ASTM 84 Unadhered Class A, CA TB 117-2013, UL Listed -Abrasion: 100,000 Wyzenbeek Double Rubs -Lightfastness: 40 Hours
Location	Relaxation Lounge 214 (2)
Notes	Cleaning: Water-based/Solvent



FF&E Schedule	
Code	D-1
Description	Display
Manufacturer	West Elm Contract
Item/Model Name	Industrial Storage Cabinet (28")
Item/Model Number	217 0410
Dimension/Size	28"w x 14"d x 32"h
Quantity	1
Finish/Color	Raw Mango Blackened Steel
Description	-Made in a Fair Trade Certified Factory -Contract grade -Made of recycled or consciously grown materials
Location	Reception Waiting & Retail Area (1)
Notes	N/A

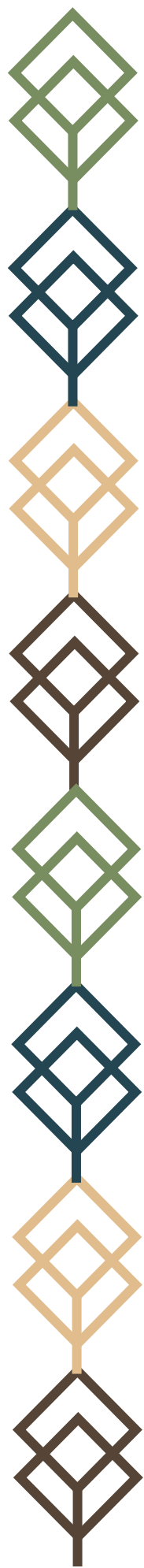


FF&E Schedule	
Code	CLC-1
Description	Chaise Lounge Chair
Manufacturer	Patio Contract
Item/Model Name	Lloyd Flanders Dining & Accessories Wicker Chaise Lounge
Item/Model Number	LF6020
Dimension/Size	8.5"w x 31" d x 29"h
Quantity	3
Finish/Color	Upholstery: Agate Powder-coated aluminum legs
Description	-Lloyd/Flanders® Comfort Plush cushions are made using Spring Bond Premium cushioning which incorporates 1.5 density High Resilience California Fire Rated Foam and the special Spring Bond Fiber
Location	Salt Room 209 (3)
Notes	-Clean with one cup of chlorine bleach diluted in one gallon of water with a small amount of mild detergent . Test in a small inconspicuous area. Saturate a cloth or soft brush with the solution. Scrub the entire cushion and rinse well with clean water and let air dry



FF&E Schedule	
Code	D-2
Description	Display
Manufacturer	Fritz Hansen
Item/Model Name	Industrial Storage Cabinet (28")
Item/Model Number	217 0410
Dimension/Size	47.5"w x 15"d x 65"h
Quantity	1
Finish/Color	Veneer Oak Black Steel
Description	-N/A
Location	Reception Waiting & Retail Area (1)
Notes	N/A

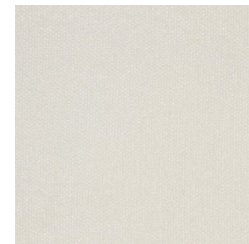




FF&E Schedule	
Code	DP-1
Description	Door Pull
Manufacturer	StepNpull
Item/Model Name	StepNpull Blue Finish
Item/Model Number	N/A
Dimension/Size	5"w x 3"d x 1.5" h
Quantity	4
Finish/Color	Blue Powder Coat
Description	-70% recycled aluminum -ADA Compliant -UL certified
Location	Men's Locker Room 216 (2) Women's Locker Room 217 (2)
Notes	N/A



FF&E Schedule	
Code	DRP-1
Description	Drapery
Manufacturer	Robert Allen
Item/Model Name	Eye Shadow
Item/Model Number	218272
Dimension/Size	Width: 56"
Quantity	Custom Made Drapery
Finish/Color	Snow
Description	-CA 117 2013 -NFPA 260 -NFPA 701 -UFAC- Class 1
Location	-Waiting Area 203 -Relaxation Lounge 214
Notes	-Custom drapery for all windows in space -Machine Washable -Pure Solvents Dry Cleaning

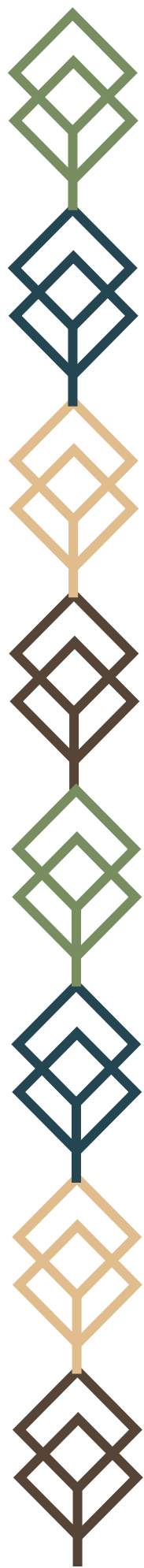


FF&E Schedule	
Code	F-1
Description	Bathroom Fan
Manufacturer	Panasonic
Item/Model Name	WhisperFit DC 110 CFM 1.2 Sone Ceiling Mounted Bath Exhaust Fan
Item/Model Number	bci4239294
Dimension/Size	Grille Width: 13" Grille Length: 13" Housing Width: 10 1/4" Duct Size: 4" Round
Quantity	2
Finish/Color	White
Description	-Approved for Commercial Use -ASHRAE 62.2 Approved -CALGreen -CUL Listed -Energy Star Rated -HVI Certified -Title 24 -UL Listed
Location	Men's Locker Room Shower 216 (1) Women's Locker Room Shower 217 (1)
Notes	N/A



FF&E Schedule	
Code	FC-1
Description	Faucet
Manufacturer	Kohler
Item/Model Name	Sculpted Touchless Faucet
Item/Model Number	K-7515-CP
Dimension/Size	2-5/8"w x 6-1/8"h 5" spout reach
Quantity	4
Finish/Color	Polished Chrome
Description	-ADA Compliant -ICC/ANSI A117.1 -ASME A112.18.1/CSA B125.1 -NSF/ANSI 362
Location	Men's Locker Room 216 (2) Women's Locker Room 217 (2)
Notes	N/A





FF&E Schedule	
Code	FC-2
Description	Faucet
Manufacturer	Kohler
Item/Model Name	Sensate Touchless Kitchen Faucet
Item/Model Number	K-72218-BL
Dimension/Size	Overall Height: 15.5" Spout Height: 9-9/16"
Quantity	5
Finish/Color	Matte Black
Description	-ADA Compliant -Response technology makes it touchless on/off with wave of hand -Premium Metal for durability -Finish resists corrosion and tarnishing -Single-Hole installation
Location	Treatment Rooms 208, 210, 211, 212, 215 (5, 1 in each room)
Notes	N/A



FF&E Schedule	
Code	FM-1
Description	Flushometer
Manufacturer	Kohler
Item/Model Name	Tripoint Touchless DC1 .28 gpf Toilet Flushometer
Item/Model Number	K-10956-SV-CP
Dimension/Size	0'-3"w x 16.75"h
Quantity	4
Finish/Color	Polished Chrome Brass
Description	-ADA Compliant - ASME A112.11.1/CSA B125.37 -ICC/ANSI A117.1
Location	Men's Locker Room 216 (2) Women's Locker Room 217 (2)
Notes	N/A

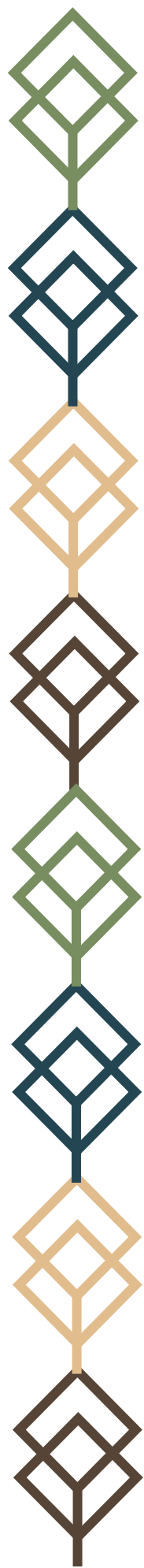


FF&E Schedule	
Code	FS-1
Description	Floating Shelves
Manufacturer	Dakota Timber Company
Item/Model Name	Floating Shelves
Item/Model Number	N/A
Dimension/Size	36"w x 8"d x 2"h
Quantity	10
Finish/Color	Brown pine
Description	Wood locally sourced in Minnesota
Location	Waiting Area (4) Men's Locker Room 216 (3) Women's Locker Room 217 (3)
Notes	See elevation for mounting height



FF&E Schedule	
Code	FS-2
Description	Floating Shelf
Manufacturer	Kohler
Item/Model Name	Avid
Item/Model Number	K-97497-BL
Dimension/Size	24"w x 10-3/16"d x 3-13/16"h
Quantity	2
Finish/Color	Matte Black
Description	-Premium metal construction for durability and reliability -finishes resist corrosion and tarnishing
Location	Men's Locker Room Shower 216 (1) Women's Locker Room Shower 217 (1)
Notes	See elevation for mounting height





FF&E Schedule	
Code	GB-1
Description	Grab Bar
Manufacturer	Winglts
Item/Model Name	Length 36 in, Smooth, Stainless Steel, Grab Bar, Silver
Item/Model Number	WGB6SS36
Dimension/Size	36" W x 3" D x 3" H 1.5" Dia.
Quantity	2
Finish/Color	Stainless Steel in Silver
Description	-ADA Compliant -Meets ANSI Standards
Location	Men's Locker Room Shower 216 (1) Women's Locker Room Shower 217 (1)
Notes	-See elevation for mounting height



FF&E Schedule	
Code	GB-2
Description	Grab Bar
Manufacturer	Winglts
Item/Model Name	Length 42 in, Smooth, Stainless Steel, Grab Bar, Silver
Item/Model Number	WGB6SS42
Dimension/Size	WGB6SS42
Quantity	2
Finish/Color	Stainless Steel in Silver
Description	-ADA Compliant -Meets ANSI Standards
Location	Men's Locker Room Shower 216 (1) Women's Locker Room Shower 217 (1)
Notes	See elevation for mounting height



FF&E Schedule	
Code	H-1
Description	Hook
Manufacturer	Kohler
Item/Model Name	Square Robe Hook
Item/Model Number	K-23290-BL
Dimension/Size	2"w x 3-3/8"d x 2"h
Quantity	4
Finish/Color	Matte Black
Description	-Premium metal construction for durability and reliability -Finishes resist corrosion and tarnishing
Location	Men's Locker Room Shower 216 (2) Women's Locker Room Shower 217 (2)
Notes	See elevation for mounting height

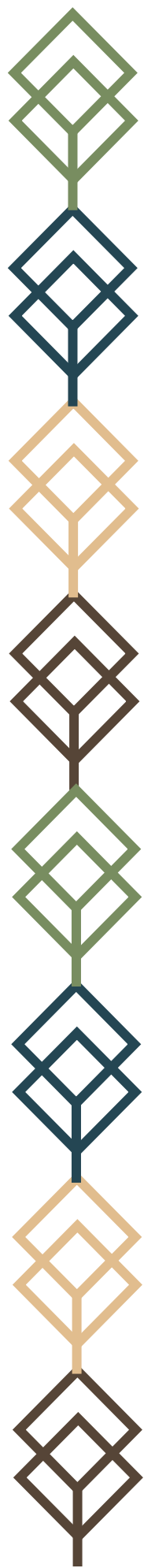


FF&E Schedule	
Code	H-2
Description	Hook
Manufacturer	Signature Hardware
Item/Model Name	Hand-Forged Iron Ornate Double Coat Hook
Item/Model Number	915722
Dimension/Size	1-1/8"w x 3-3/4"d x 5-1/4"h
Quantity	12
Finish/Color	Black Powder Coat
Description	-Premium metal construction for durability and reliability -finishes resist corrosion and tarnishing
Location	Treatment Rooms 208, 210, 211, 212, 215 (10, 2 in each room) Salt Room 209 (2)
Notes	-Mounting Hardware Included -See elevation for mounting height



FF&E Schedule	
Code	HAL-1
Description	Halogenerator
Manufacturer	Salt Chamber
Item/Model Name	S.A.L.T FX Pro Halogenerator
Item/Model Number	N/A
Dimension/Size	10.6"w x 10.2"d x 18.9"h
Quantity	1
Finish/Color	Stainless Steel
Description	-UL Listed -CE Certified -Complies with QS/ISO quality standards -Includes Bluetooth and remote control capability from tablet or smartphone
Location	Salt Room 209 (1)
Notes	N/A





FF&E Schedule	
Code	HD-1
Description	Hand Dryer
Manufacturer	Bradley
Item/Model Name	Aerix Hand Dryer
Item/Model Number	2902-2874
Dimension/Size	11.5"w x 4"d x 10.5"h
Quantity	2
Finish/Color	Stainless Steel
Description	-ADA compliant -Cost effective, 3 times faster drying time requires 80% less electricity -Hands free operation -cUL Listed
Location	Men's Locker Room 216 (1) Women's Locker Room 217 (1)
Notes	See elevation for mounting height



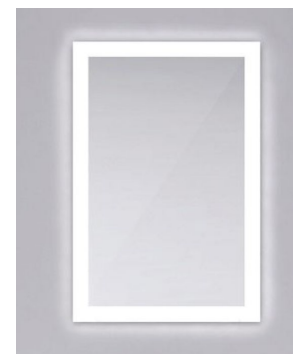
FF&E Schedule	
Code	LO-1
Description	Lockers
Manufacturer	Salsbury Industries
Item/Model Name	12" Wide Single Tier Designer Wood Locker
Item/Model Number	31168BLK
Dimension/Size	12"w x 18"d x 76" h
Quantity	16
Finish/Color	Black
Description	-Constructed of industrial grade particle board and covered with durable high pressure laminate -All locker doors include heavy duty concealed hinges and a lift up handle and recessed hasp for security
Location	Men's Locker Room 216 (8) Women's Locker Room 217 (8)
Notes	N/A

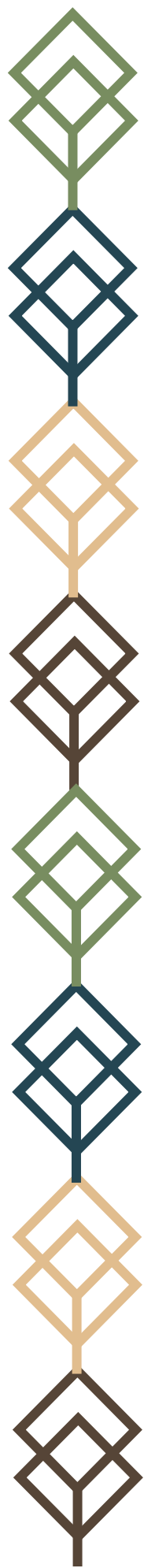


FF&E Schedule	
Code	MF-1
Description	Mirror Frame
Manufacturer	Mirror Mate Frames
Item/Model Name	Cherokee Barnwood Frame
Item/Model Number	747-024360: BradEX
Dimension/Size	52"w x ¾"d x 88"h
Quantity	2
Finish/Color	Walnut, Mocha
Description	-ADA Compliant
Location	Men's Locker Room 216 (1) Women's Locker Room 217 (1)
Notes	-Hardware Included -Clean frequently with mild soap and water or glass cleaner and a cotton cloth



FF&E Schedule	
Code	MR-1
Description	Mirror
Manufacturer	Electric Mirror
Item/Model Name	Silhouette Rectangle Lighted Mirror
Item/Model Number	EMR105313
Dimension/Size	54"w x 1.75"d x 36"h Mirror thickness: ¼"
Quantity	6
Finish/Color	HD Mirror Low Iron Tempered Mirror
Description	-UL Listed -ADA -Damp Location -LED -3000K -90 CRI
Location	Men's Locker Room 216 (3) Women's Locker Room 217 (3)
Notes	See elevation for mounting height





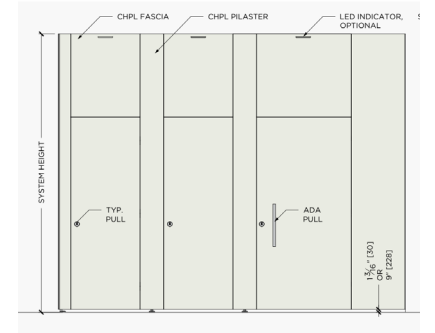
FF&E Schedule	
Code	MR-2
Description	Mirror
Manufacturer	Fab Glass and Mirror
Item/Model Name	HD Wall Mirror Kit
Item/Model Number	GM48x84
Dimension/Size	48"w x 84"h Mirror thickness: 1/4"
Quantity	2
Finish/Color	HD Mirror Low Iron Tempered Mirror
Description	-Tempered -HD Visibility -Copper Free -Lead Free -Low Iron
Location	Men's Locker Room 216 (1) Women's Locker Room 217 (1)
Notes	-Hardware included -Safety Backing



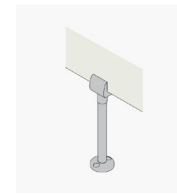
FF&E Schedule	
Code	MT-1
Description	Massage Table
Manufacturer	Massage Warehouse
Item/Model Name	Earthlite Yosemite 30
Item/Model Number	217 0410
Dimension/Size	30"w x 73"l Height Range: 20"-26.5"
Quantity	5
Finish/Color	Upholstery: Beige Powder-coated aluminum legs
Description	-Shimmy-Lok Leg Braces -3" multi-layer cushioning system -100% PU Upholstery -Includes Earthlite Deluxe Adjustable Headrest with Face Pillow
Location	Treatment Rooms 208, 210, 211, 212, 215 (5, 1 in each room)
Notes	Cleaning: Water-based/Solvent



FF&E Schedule	
Code	PAR-1
Description	Partition
Manufacturer	Carvat
Item/Model Name	chpIENCLOSE
Item/Model Number	CENC-F
Dimension/Size	Custom for Locker Rooms
Quantity	2 standard stalls 2 accessible stalls
Finish/Color	Glass: Winter White
Description	-Extended 9" ADA Compliant Legs -ADA Ladder Pull -Typical Lock & Pull -LED Occupancy Indicator -Glass finish naturally prevents collection of bacterial and grime -Non-porous easy to clean materials
Location	Men's Locker Room 216 (1 accessible, 1 standard) Women's Locker Room 217 (1 accessible, 1 standard)
Notes	- CARVART offers a standard library of bathroom accessories that can be selected and configured according to local code and bathroom needs. Selecting these tested configurations will greatly improve lead time on divider manufacturing -Selected items: Grab Bars, Sanitary Napkin Disposal, Double Roll Toilet Paper. See elevations for mounting heights



B06
Winter White





FF&E Schedule	
Code	PLT-1
Description	Plant
Manufacturer	Prospect Plants
Item/Model Name	Design Green Weeping Fig
Item/Model Number	LLRGWF1 750/HDYCL
Dimension/Size	31.5"x 67"
Quantity	2
Finish/Color	Headrow White Planter
Description	-N/A
Location	Waiting Area 203 (1) Relaxation Lounge 214 (1)
Notes	-Provides biophilic elements of improving mood, wellness, productivity, and reduced stress levels without the maintenance of living walls



F&E Schedule	
Code	R-2
Description	Drapery Rod
Manufacturer	Smith & Knoble
Item/Model Name	Deco Metal Wall Mount Hardware End Cap
Item/Model Number	Rod: N/A End Cap: 15169
Dimension/Size	Various Widths 1-1/8" diameter End Cap: 1"w x 1-1/4"h
Quantity	26
Finish/Color	Java
Description	N/A
Location	Waiting Area 203 (2) Relaxation Lounge 214 (1)
Notes	-See elevation for mounting height, all rods mounted at same height -Custom Drapery will be made

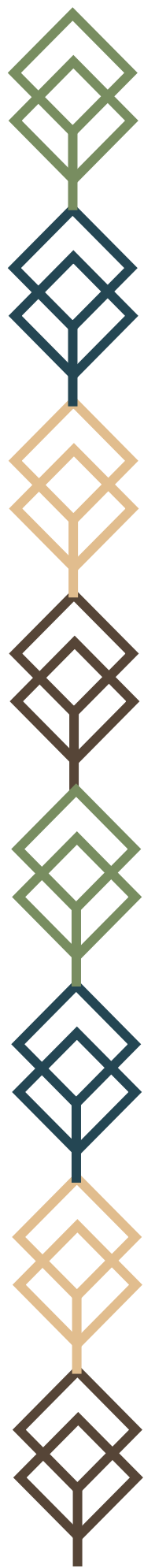


FF&E Schedule	
Code	R-1
Description	Shower Curtain Rod
Manufacturer	Signature Hardware
Item/Model Name	Straight Solid Brass Shower Curtain Rod Roller Ball Shower Curtain Rings Vinyl Shower Curtain- Opaque Cotton Shower Curtain- White
Item/Model Number	Rod: 902840 Rings: 901078 Liner: 926299 Curtain: 926932
Dimension/Size	Rod: 5' length 2-1/4" diameter Liner & Curtain: 72" width 84" height
Quantity	2 of each
Finish/Color	Matte Black Opaque Liner White
Description	-100% Vinyl liner -100% Cotton Cloth
Location	Men's Locker Room 216 (1) Women's Locker Room 217 (1)
Notes	-Cotton Curtain is machine washable



FF&E Schedule	
Code	RS-1
Description	Roller Shades
Manufacturer	Lutron
Item/Model Name	-Motorized Roller Shades -QS Wallstation
Item/Model Number	085370b 1 10.24.18
Dimension/Size	Custom Size for windows
Quantity	22
Finish/Color	Aura Naturelle: RF-AUR3-2
Description	-Openness Factor: 3% -GREENGUARD Certified -Lead Free -RoHS Compliant -Anti-Microbial Property -Controls Glare -Decrease solar heat gain
Location	All windows
Notes	Inside Mount





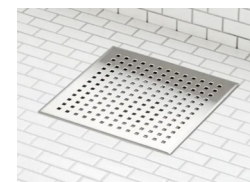
FF&E Schedule	
Code	S-1
Description	Sofa
Manufacturer	OFS
Item/Model Name	Sofa With Arms, Multiple Textiles
Item/Model Number	C202143-MT
Dimension/Size	71 "w x 29"d x 34"h
Quantity	1
Finish/Color	Base: Powder Coat, Onyx Seat & Back: Concertex Pascal Dunes Arms and Base: Designtex, Flat, Linen
Description	-OSF is has WELL certification Upholsteries -SEE C-1 & C-2
Location	Waiting Area 203 (1)
Notes	Cleaning: Water-based/Solvent



FF&E Schedule	
Code	SH-1
Description	Shower Head/Faucet and Hand Shower
Manufacturer	Delta
Item/Model Name	Monitor 17 Series Dual Function Balanced Shower System
Item/Model Number	DSS-Vero-1701RB
Dimension/Size	Showerhead Width: 8" Shower Arm Reach: 16" Hose Length: 69"
Quantity	2
Finish/Color	Matte Black
Description	-Wall mounted -ADA Compliant -Approved for Commercial Use -Pressure Balanced -Scald Guard
Location	Men's Locker Room Shower (1) Women's Locker Room Shower (1)
Notes	See elevation for mounting height

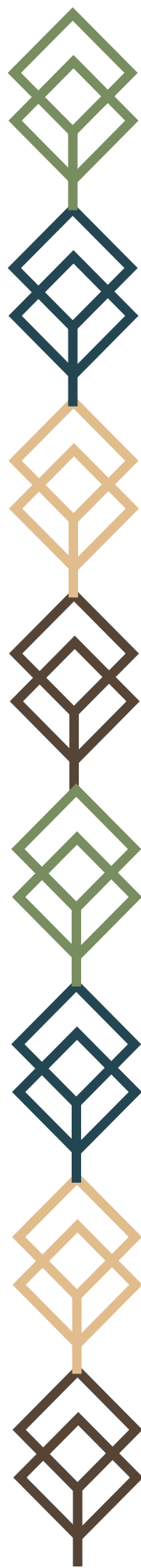


FF&E Schedule	
Code	SD-1
Description	Shower Drain
Manufacturer	Signature hardware
Item/Model Name	Thornton Square Shower Drain with Drain Flange
Item/Model Number	928026-F
Dimension/Size	6"x6"
Quantity	2
Finish/Color	Brushed Stainless Steel
Description	-305 Stainless Steel
Location	Men's Locker Room Shower 216 (1) Women's Locker Room Shower 217 (1)
Notes	N/A



FF&E Schedule	
Code	SK-1
Description	Sink
Manufacturer	Kohler
Item/Model Name	Compass Drop-in/undermount Bathroom Sink
Item/Model Number	K-2298-0
Dimension/Size	Overall Width: 13.24" Overall Depth: 13.24" Overall Height: 7"
Quantity	4
Finish/Color	White
Description	-ADA Compliant -ASME A112.19.2/CSA B45.1 -ICC/ANSI A117.1 -CSA B651
Location	Men's Locker Room 216 (2) Women's Locker Room 217 (2)
Notes	N/A





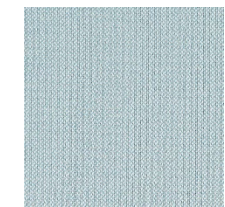
FF&E Schedule	
Code	SK-2
Description	Sink
Manufacturer	Kohler
Item/Model Name	Cairn Neoroc Undermount Bar Sink
Item/Model Number	K-8223-CM1
Dimension/Size	15.5"w x15.5"d 10-1/8" bowl depth
Quantity	5
Finish/Color	Matte Black
Description	-ADA Compliant -Scratch, stain, chip, and thermal-shock resistant
Location	Treatment Rooms 208, 210, 211, 212, 215 (5, 1 in each room)
Notes	N/A



FF&E Schedule	
Code	SPD-1
Description	Soap Dispenser
Manufacturer	Kohler
Item/Model Name	Curve Touchless Foam Soap Dispenser
Item/Model Number	K-25197-CP
Dimension/Size	1-7/8"w x 4-5/8"d x 3-9/16"h
Quantity	4
Finish/Color	Polished Chrome
Description	-ADA Compliant -ICC/ANSI A117.1 -CSA B125.1 -NSF/ANSI 362
Location	Men's Locker Room 216 (2) Women's Locker Room 217 (2)
Notes	N/A

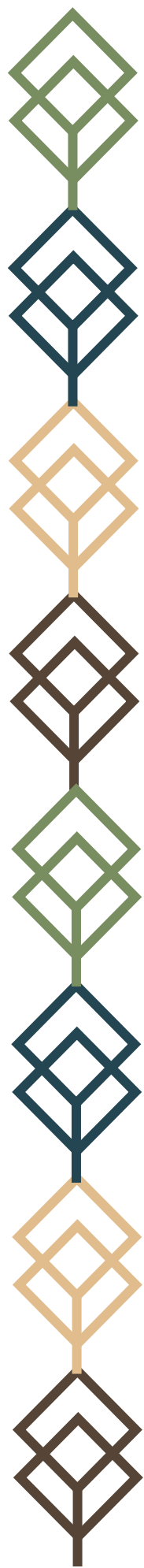


FF&E Schedule	
Code	STL-1
Description	Stool
Manufacturer	OFS
Item/Model Name	Stray Physician's Stool
Item/Model Number	2501
Dimension/Size	26"w x 26"d x 19.25-26.5"h
Quantity	5
Finish/Color	Base: Carbon Nylon Seat: Designtex, Rocket, Sea Salt
Description	-OSF has WELL certification Upholstery -28% Polyester, 72% Polyester (Postconsumer Recycled) -Finish: Nanotechnology Stain Resistant -Width: 54" -Flammability: ASTM 84 Unadhered Class A, CA TB 117-2013, UL Listed -Abrasion: 100,000 Wyzenbeek Double Rubs -Lightfastness: 40 Hours -Height adjustable, pneumatic lift 
Location	Treatment Rooms 208, 210, 211, 212, 215 (5, 1 in each room)
Notes	Cleaning: Water-based/Solvent



FF&E Schedule	
Code	T-1
Description	Side Table
Manufacturer	HBF
Item/Model Name	Double Take Round Side Table
Item/Model Number	HTD10901R-2124
Dimension/Size	Overall Height: 21.5" Overall Diameter: 24"
Quantity	2
Finish/Color	Base: Powder Coat Black Tabletop / Shelf: GCL Clear
Description	-1/2" thick glass -1/4" reveal -Beveled wood or 1/4" thick glass shelf -LEVEL® 2 certified -SCS Indoor Advantage™ Gold -Meets HCWH Healthy Interiors Criteria
Location	Waiting Area 203 (2)
Notes	N/A





FF&E Schedule	
Code	T-2
Description	Coffee Table
Manufacturer	HBF
Item/Model Name	Double Take Round Coffee Table
Item/Model Number	HTD10901R-1642
Dimension/Size	Overall Height: 16" Overall Diameter: 42"
Quantity	1
Finish/Color	Base: Powder Coat Black Tabletop / Shelf: GCL Clear
Description	-1/2" thick glass -1/4" reveal -Beveled wood or 1/4" thick glass shelf -LEVEL® 2 certified -SCS Indoor Advantage™ Gold -Meets HCWH Healthy Interiors Criteria
Location	Waiting Area 203 (1)
Notes	N/A



BL
Black



GCL
Clear

FF&E Schedule	
Code	T-3
Description	Side Table
Manufacturer	OFS
Item/Model Name	Denro
Item/Model Number	DNR-20ET
Dimension/Size	12-14" diameter 20"h
Quantity	12
Finish/Color	Walnut
Description	N/A
Location	Treatment Rooms 208, 210, 211, 212, 215 (5, 1 in each room) Salt Room 209 (3) Relaxation Lounge 214 (4)
Notes	N/A



FF&E Schedule	
Code	TC-1
Description	Recycling/Trash Container
Manufacturer	Recycle Away Systems & Solutions
Item/Model Name	The Premier Double- Grey Elm
Item/Model Number	PM-STT18
Dimension/Size	28"w x 15"d x 30"h
Quantity	2
Finish/Color	Grey Elm
Description	Made with recycled content
Location	Men's Locker Room 216 (1) Women's Locker Room 217(1)
Notes	N/A



FF&E Schedule	
Code	TO-1
Description	Toilet
Manufacturer	Kohler
Item/Model Name	Kingston Wall-mounted Top Spud Flushometer Bowl
Item/Model Number	K-4325-0
Dimension/Size	16.5"w x 26.5"d x 13.24"h
Quantity	4
Finish/Color	Vitreous china Polished Chrome
Description	-ADA Compliant - ASME A112.19.2/CSA B45.1 -EPA Water Sense -UL Environment
Location	Men's Locker Room 216 (2) Women's Locker Room 217 (2)
Notes	N/A



Room Finish Schedules

Room Finish Schedule

Code	ACT-1
Description	Acoustical Ceiling Tile
Manufacturer	Kanopi by Armstrong Ceilings
Product/Style Name	Calla
Product Number	2820
Product Finish/Color	White
Dimension/Size	24"x24" 1"thick
Location	Corridors
Notes	-0.85 Sound Absorption (NRC) -35 of 50 Sound Blocking (CAC) -Class A Fire Rating -Humidity Resistance -Light Reflectance -Sustainable, recycled content, green building standards -Cleanable -Soil Resistance -Scratch Resistance -Impact Resistance -Fog Disinfectable



Room Finish Schedule

Code	BM-1
Description	Beams
Manufacturer	Dakota Timber Company
Product/Style Name	Custom Ceiling Beams (nonstructural)
Product Number	N/A
Product Finish/Color	Pine with stained finish
Dimension/Size	Approximately 6" x 6" & 12" x 12"
Location	Reception Waiting & Retail Area 202 Waiting Area 203
Notes	Sizes vary – see plans for details



Room Finish Schedule

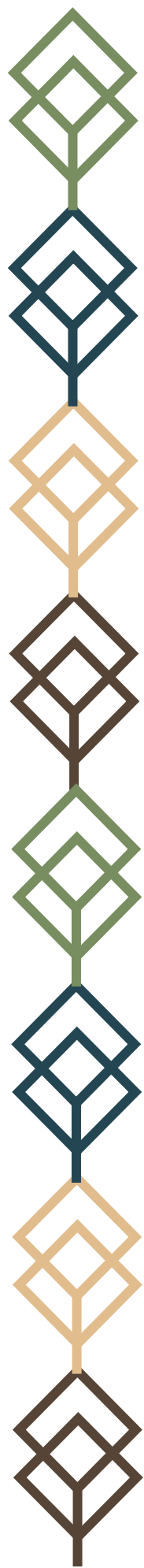
Code	CG-1
Description	Corner Guard
Manufacturer	InPro
Product/Style Name	Woodland
Product Number	A680
Product Finish/Color	American Walnut
Dimension/Size	90 degree angle 1-1/2" x 1-1/2" x 8'
Location	All corners in corridors
Notes	-N/A



Room Finish Schedule

Code	CPT-1
Description	Carpet Tile
Manufacturer	Mannington Commercial
Product/Style Name	Fearless
Product Number	92113
Product Finish/Color	Denim Wash
Dimension/Size	24"x24" .188" Pile Thickness
Location	Corridors Relaxation Lounge 214
Notes	-Passes ASTM E648 -NSF/ANSI 140 Certificate -Recycled Content -Indoor Air Quality -EPD -HPD -Contributes to LEED Credits -mindful MATERIALS

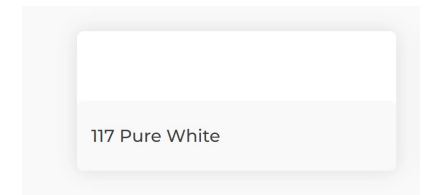




Room Finish Schedule	
Code	CPT-2
Description	Carpet Tile
Manufacturer	Mannington Commercial
Product/Style Name	Lava
Product Number	51202
Product Finish/Color	Beam
Dimension/Size	24"x24" .120" Pile Thickness
Location	Treatment Rooms 208, 210, 211, 212, 215 Men's Locker Room 216 Women's Locker Room 217
Notes	-Infinity 2 cushion for support and comfort -Tip Shear Patterned Loop -Passes ASTM E662 -NSF/ANSI 140 Certification -Contains Recycled Content -Indoor Air Quality -EPD/HPD Declarations -Contributes to LEED Credits, see spec sheet -Mindful MATERIALS



Room Finish Schedule	
Code	G-1
Description	Grout
Manufacturer	Mapei
Product/Style Name	Ultracolor Plus Max
Product Number	6BS011705
Product Finish/Color	Pure White
Dimension/Size	N/A
Location	Treatment Rooms 208, 210, 211, 212, 215 Men's Locker Room Floor and Wall with Tile 216 Women's Locker Room Floor and Wall with Tile 217
Notes	-Environmental Product Declaration -Indoor Advantage Gold

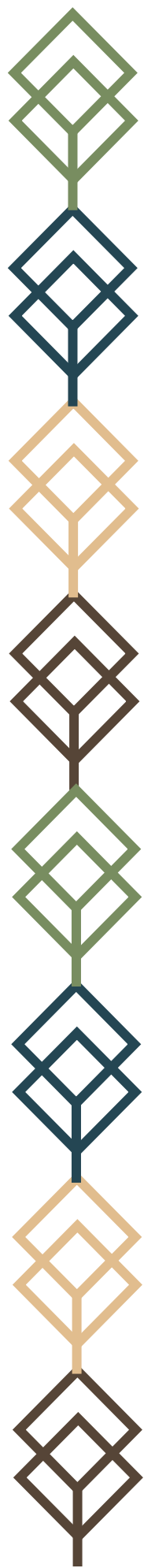


Room Finish Schedule	
Code	FLT-1
Description	Flooring Transition
Manufacturer	Schluter
Product/Style Name	Schiene Edge Trim 9/32" Stn Steel
Product Number	E70
Product Finish/Color	Stainless Steel
Dimension/Size	9/32" H
Location	Business Center to Café Queen Suites to Corridor Mother's Room to Corridor
Notes	-N/A



Room Finish Schedule	
Code	GW-1
Description	Green Wall
Manufacturer	Vantage Spaces
Product/Style Name	Replica Green Wall
Product Number	N/A
Product Finish/Color	Mixed Ivy/Buxus Artificial Green Wall
Dimension/Size	Custom
Location	Reception Waiting & Retail Area 202 North Wall Relaxation Lounge 214 North & West Wall
Notes	-Provides biophilic elements of improving mood, wellness, productivity and reduced stress levels without the maintenance of living walls

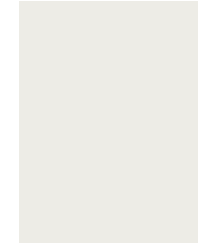




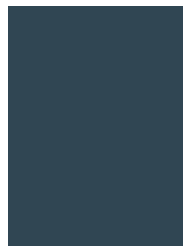
Room Finish Schedule	
Code	LVT-1
Description	Luxury Vinyl Tile
Manufacturer	Mannington Commercial
Product/Style Name	Walkway-Stone
Product Number	WW124
Product Finish/Color	Malaga
Dimension/Size	18"x18" 0.080" Thickness
Location	Salt Room 209
Notes	-Passes ASTM E662 (Smoke Density) -Passes ASTM F925 (Chemical Resistance) -Passes ASTM F1514 (Resistance to Heat) -Contributes to LEED Credits -mindful MATERIALS -EPD Indoor Air Quality



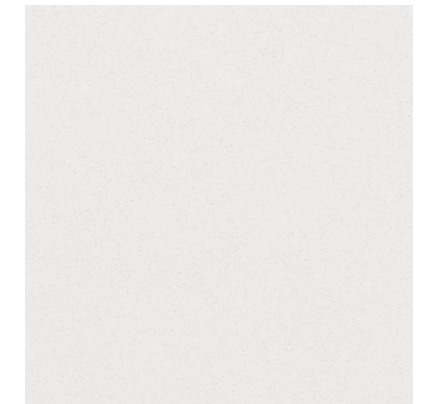
Room Finish Schedule	
Code	PT-2
Description	Paint
Manufacturer	Sherwin Williams
Product/Style Name	SuperPaint Interior Acrylic with Air Purifying Technology
Product Number	A86W00061
Product Finish/Color	Pure White SW 7005
Dimension/Size	N/A
Location	Salt Room 209 Ceiling Men's Locker Room 216 Ceiling Women's Locker Room 217 Ceiling
Notes	-Greenguard Gold -Product certified for low chemical emissions -Contributes to cleaner indoor air quality -Anti-microbial

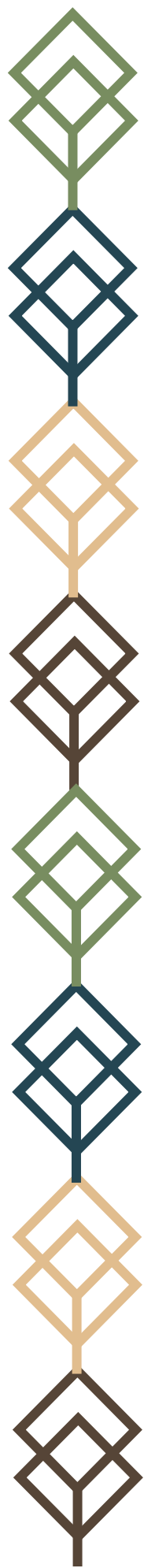


Room Finish Schedule	
Code	PT-1
Description	Paint
Manufacturer	Sherwin Williams
Product/Style Name	SuperPaint Interior Acrylic with Air Purifying Technology
Product Number	A86W00061
Product Finish/Color	Rainstorm SW 6230
Dimension/Size	N/A
Location	Men's Locker Room 216 Entry Way All Walls Women's Locker Room 217 Entry All Walls
Notes	-Greenguard Gold -Product certified for low chemical emissions -Contributes to cleaner indoor air quality -Anti-microbial

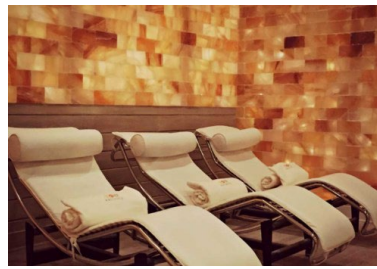


Room Finish Schedule	
Code	ST-1
Description	Engineered Stone Slab
Manufacturer	Cambria
Product/Style Name	Whitewall
Product Number	10157287
Product Finish/Color	Finish: Polished
Dimension/Size	132" x 65.5" -Check with local rep/installer for slab size per design
Location	Men's Locker Room 216 Women's Locker Room 217
Notes	-Abrasion: ASTM C501 Tested. Result of 223 -Flammability: ASTM E-84 surface burning characteristics 17 (Class A/1 Rating) -Nonabsorbent and nonporous -Antimicrobial Tested: NSF-51 Certified -Greenguard Gold, Health Product Declaration Open Standard, declare certified and Living Building Challenge

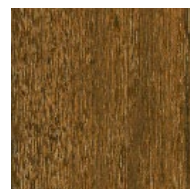
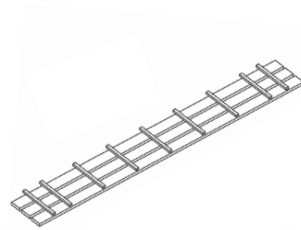




Room Finish Schedule	
Code	SW-1
Description	Salt Wall
Manufacturer	Salt Chamber
Product/Style Name	Himalayan Salt Bricks
Product Number	N/A
Product Finish/Color	Pink/amber color variations
Dimension/Size	10" x 6"
Location	Salt Room 209 All Walls & Raised Platform
Notes	-Back-lighted



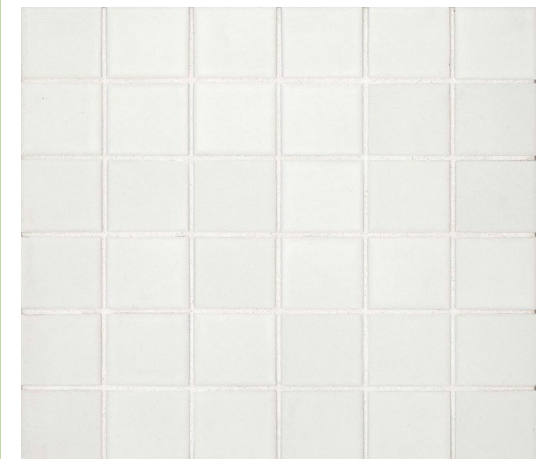
Room Finish Schedule	
Code	SWC-1
Description	Suspended Wood Ceiling
Manufacturer	Armstrong Ceiling & Wall Solutions
Product/Style Name	Woodworks Linear -Solid Panels Suspension System
Product Number	8176W1
Product Finish/Color	Grille Dark Cherry
Dimension/Size	3-1/4" Planks Length: 12" x 96"
Location	Treatment Rooms 208, 210, 211, 212, 215 Ceiling Relaxation Lounge 214 Ceiling
Notes	-Class C Fire Performance -Disinfectability: Fog, Spray, Wipe -Contributes to LEED credits, see tech line -See elevation for suspension height -10'-0" A.F.F

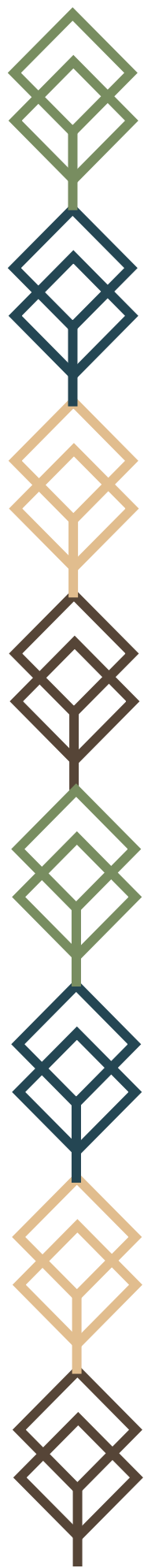


Room Finish Schedule	
Code	TL-1
Description	Tile
Manufacturer	Oceanside Glass & Tile
Product/Style Name	Las Playas Subway
Product Number	MB-LB-SUBWAY-LAJOLL-SW
Product Finish/Color	La Jolla
Dimension/Size	Sheet size: 10.5" x 11.37" Overall Size: 1.38" x 4.25" Thickness: 6mm
Location	Treatment Rooms 208, 210, 211, 212, 215 Cabinetry Backsplash Men's Locker Room 216 North, Northeast, and West Stall Wall Women's Locker Room 217 North, Northwest, and East Stall Wall
Notes	-Stain Resistant -Chemical Resistant

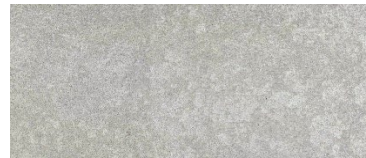


Room Finish Schedule	
Code	TL-2
Description	Tile
Manufacturer	Bedrosians Tile and Stone
Product/Style Name	True 2" Mosaic
Product Number	DECTRUWHI22MOM
Product Finish/Color	White
Dimension/Size	12"x12"
Location	Men's Locker Room 216 Flooring Women's Locker Room 217 Flooring
Notes	-Porcelain -Glazed - Abrasion / Wear Resistance: ASTM C1027 - 4 PEI -Tensile Strength: ASTM C648 > 250 lbs. -Slip Resistance: DCOF is greater than or equal to 0.42 -Water Absorption: ASTM C373 is less than or equal to 0.5% -GREENGUARD -USGBC Certified -GREENGUARD Gold

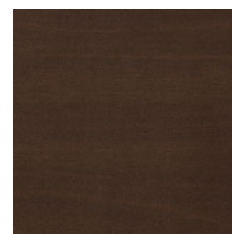




Room Finish Schedule	
Code	TL-3
Description	Tile
Manufacturer	Coverings ETC
Product/Style Name	Eco-Cem
Product Number	SAM-ECS-DERGRE
Product Finish/Color	Derby Grey
Dimension/Size	24x24 or 24 x 48 or 48x48 or 16x16
Location	Waiting Area
Notes	-80% Recycled Portland Cement -20% Recycled Wood Pulp -Free of VOCs -Can contribute towards LEED credits



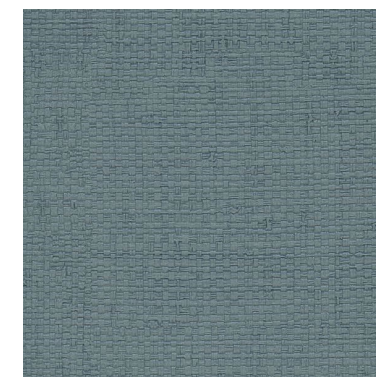
Room Finish Schedule	
Code	WB-1
Description	Wall Board
Manufacturer	InPro
Product/Style Name	Palladium 3D Trim Horizontal Base Board
Product Number	A680
Product Finish/Color	American Walnut
Dimension/Size	5/8" Thick 4" High
Location	All walls besides Salt Room, North Walls in Locker Rooms 216 & 217, and Walls with GW-1
Notes	-Class A Fire Rating -Adhesive Mount -See elevations for mounting heights for certain walls

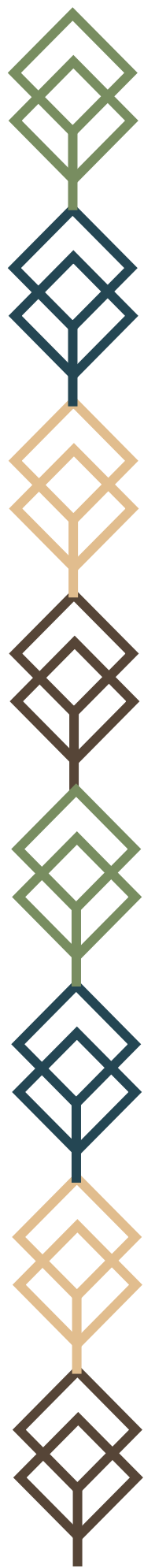


Room Finish Schedule	
Code	WC-1
Description	Vinyl Wallcovering
Manufacturer	MDC Interior Solutions
Product/Style Name	Katari
Product Number	3521KT
Product Finish/Color	Gauze
Dimension/Size	Overall Width: 53/54"
Location	Treatment Rooms 208, 210, 211, 212, 215 Walls, see WC-2 location Men's Locker Room 216 Southeast and West Walls Women's Locker Room 217 Southwest and East Walls
Notes	-Fire Rating Class A -Flame Spread 15 -Smoke Developed 10 -Backing: Osnaburg -CA 01350 -CHPS -SCS Indoor Advantage Gold Features -Printed with water-based inks

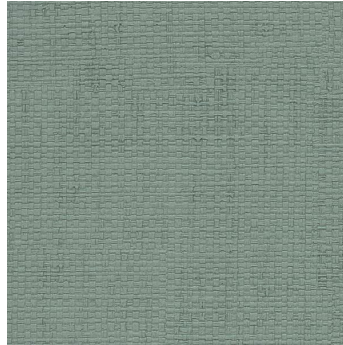


Room Finish Schedule	
Code	WC-2
Description	Vinyl Wallcovering
Manufacturer	MDC Interior Solutions
Product/Style Name	Katari
Product Number	3519KT
Product Finish/Color	Morning Glory
Dimension/Size	Overall Width: 53/54"
Location	All Corridor Walls Treatment Room 208 West Wall, 210 & 211 North Wall, 212 & 215 West Wall Men's Locker Room 216 Southwest Wall Women's Locker Room 217 Southeast Wall
Notes	-Fire Rating Class A -Flame Spread 15 -Smoke Developed 10 -Backing: Osnaburg -CA 01350 -CHPS -SCS Indoor Advantage Gold Features -Printed with water-based inks





Room Finish Schedule	
Code	WC-3
Description	Vinyl Wallcovering
Manufacturer	MDC Interior Solutions
Product/Style Name	Katari
Product Number	3514KT
Product Finish/Color	Riptide
Dimension/Size	Overall Width: 53/54"
Location	Reception Waiting & Retail Area 202 West and South Walls Waiting Area 203 North Wall Relaxation Lounge 214 Northeast Wall and East Wall
Notes	-Fire Rating Class A -Flame Spread 15 -Smoke Developed 10 -Backing: Osnaburg -CA 01350 -CHPS -SCS Indoor Advantage Gold Features -Printed with water-based inks



Room Finish Schedule	
Code	WC-4
Description	Vinyl Wallcovering
Manufacturer	LBI Boyd Design Resource
Product/Style Name	Sunrise
Product Number	G2-13-04
Product Finish/Color	White Gold
Dimension/Size	Overall Width: 54"
Location	Waiting Area 203 East Wall
Notes	-100% Vinyl -ImageLock Protective Coating Backing: Non-Woven -Type II - Flammability: ASTM E84 Class A, Flame Spread at 25, Smoke Developed at 140; BS 476 Parts 6 and 7; CAN/ULC-S102.2; EU Class Flame, EN 13502, B-s1; NFPA Life Safety Code 101 -Antimicrobial Testing: ASTM 621 - CDPH Standard Method v1.2 for Classroom and Office Environments -EU Toxicity Compliant -Greenguard Gold -May contribute to LEED credits



Room Finish Schedule	
Code	WC-5
Description	Vinyl Wallcovering
Manufacturer	LBI Boyd Design Resource
Product/Style Name	Rootwood
Product Number	6007
Product Finish/Color	Beach
Dimension/Size	9"w x 19.5"l Thickness: 0.25" to 0.85"
Location	Reception Waiting & Retail Area East Wall Waiting Area 203 Beverage Bar Walls
Notes	-100% Recycled Teak Root -Reclaimed Wood -FSC Certified



Room Finish Schedule	
Code	WCT-1
Description	Wood Countertop
Manufacturer	Hardwood Lumber Company
Product/Style Name	Rustic White Oak Wide Plank (Face Grain) Countertop
Product Number	N/A
Product Finish/Color	Derby Grey
Dimension/Size	1.5" thick Custom Lengths
Location	Reception Waiting & Retail Area 202 Reception Desk Waiting Area 203 Beverage Bar Countertop Relaxation Lounge 214 Beverage Bar Countertop
Notes	-1/8" Radius Edge Detail





Room Finish Schedule	
Code	WW-1
Description	Wet Wall
Manufacturer	Wilsonart
Product/Style Name	Wetwall
Product Number	W7019
Product Finish/Color	Marafino
Dimension/Size	48"w x 60" panels
Location	Men's Locker Room 216 Shower Walls Women's Locker Room 217 Shower Walls
Notes	-Suitable for wet area applications -Interior use only; install directly over gypsum board, greenboard, cement backer board, plaster, or existing hard tile -Clean with warm soapy water and a sponge -Common non-abrasive household cleaners can be used with a soft sponge or cloth; rinse immediately -Antimicrobial protection -AEON enhanced scratch free and scuff-resistant performance technology



Lighting Schedule	
Code	P-1
Fixture Type	Pendant
Manufacturer	Kohler
Item/Model Name/Number	Modern Farm, One Light Pendant K-23664-PE01 Finish: Valiant Nickel
Description	-Suitable for living, dining, and kitchen spaces -Durable finishes engineered to last -UL 1598 -CSA C22.2 No. 250.0
Dimension/Size	Width: 18" Lamp Height: 6-5/8" Rod Length: 11 3/4"
Quantity	3
Location	Reception & Retail Waiting Area 202 (3)
Notes	See Reflecting Ceiling Plan for location



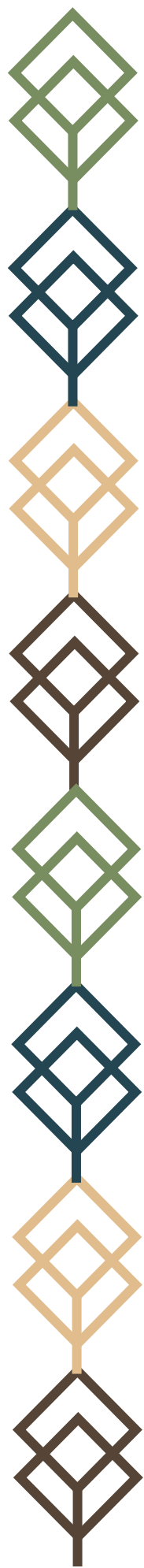
Lighting Schedules

Lighting Schedule	
Code	FM-1
Fixture Type	Flush Mount
Manufacturer	Maxim Lighting
Item/Model Name/Number	Honeycomb Flush Mount 30330BKGLD Finish: Black & Gold
Description	-LED -Damp Rated -UL Listed -Low Voltage Electronic Dimmer -3000K -90 CRI
Dimension/Size	16"w x 7"h
Quantity	14
Location	Reception & Retail Waiting Area 202 (2) Waiting Area 201 (1) Salt Room 209 (2) Treatment Room 208, 210, 211, 212 (8, 2 in each room) Treatment Room 215 (1)
Notes	See Reflecting Ceiling Plan for location



Lighting Schedule	
Code	P-2
Fixture Type	Pendant
Manufacturer	Lightart
Item/Model Name/Number	Tuck Pendant COL-TUCK-PEND Finish: Custom Color
Description	- LED -4000K -Dim-to-warm -UL Listed -CSA Certified -Declare -Red List Free Ingredients
Dimension/Size	6.5" diameter x 11.75"h
Quantity	18
Location	Treatment Room 208, 210, 211, 212, 215 (15, 3 in each room) Relaxation Lounge 214 (3)
Notes	-See RCP and elevation for mounting height





Lighting Schedule	
Code	RC-1
Fixture Type	Recessed Can
Manufacturer	Elite LED Lighting
Item/Model Name/Number	8" LED Commercial Recessed Downlight White Polycarbonate Aluminum
Description	- CCT Adjustable Switch 3000K / 4000K / 5000K
Dimension/Size	7.4"w x 4.4"h
Quantity	21
Location	Men's Locker Room 216 (4) Women's Locker Room 217 (4) Corridors (11)
Notes	-N/A



Lighting Schedule	
Code	RC-2
Fixture Type	Recessed Can
Manufacturer	Elite LED Lighting
Item/Model Name/Number	6 Series Smart Dim Retrofit Recessed Reflector
Description	- UL Listed -Wet Location Rated -Title 24 -Warm Dim LED -3000K Warm Dim -90 CRI -50,000 Hours
Dimension/Size	7.4"w x 4.4"h
Quantity	6
Location	Men's Locker Room 216 (3) Women's Locker Room 217 (3)
Notes	-N/A



Lighting Schedule	
Code	SC-1
Fixture Type	Wall Sconce
Manufacturer	Lightart
Item/Model Name/Number	Eco Sconce COL-ECO-SCN Finish: Linea Ivory & Khaki
Description	- LED -4000K -80CRI Light source -Dimming Compatible -UL Listed -ADA Compliant -Declare -Red List Free Ingredients
Dimension/Size	12"w x 4"d x 8"h
Quantity	21
Location	Treatment Room 208, 210, 211, 212, 215 (10, 2 in each room) Corridors (11)
Notes	See RCP for mounting heights



Lighting Schedule	
Code	SC-2
Fixture Type	Wall Sconce
Manufacturer	Kohler
Item/Model Name/Number	Modern Farm One-Light Swinging Sconce K-23668-SCO1-VNL Finish: Valiant Nickel
Description	-Angled shade can swing 180 degrees right or left, enabling you to direct light where needed -damp rated -UL 1598 - CSA C22 No. 250.0
Dimension/Size	8"w x 10"d x 7"h
Quantity	6
Location	Relaxation Lounge 214 (2) Men's Locker Room 216 (2) Women's Locker Room 217 (2)
Notes	-See RCP and elevation for mounting height





Works Cited

Adam, I. (2019). Drivers of physical accessibility among hotels. *Anatolia*, 30(4), 560 – 571. <https://doi.org/10.1080/13032917.2019.1651356>

Alfuraty, A. (2020). Sustainable environment in interior design: Design by choosing sustainable materials. *IOP Conference Series: Materials Science and Engineering*. 1-19.

Anjani, A. R., Rizky, D., & Soesilo, P. K. M. (2021). The effects of color and style of boutique hotels on consumer's emotion and perceived intimacy. *Psychology and Education Journal*, 58(2), 3791-3801.

Atzeni, M., Chiappa, G.D., & Pung, J.M. (2021). Factors influencing choice of accommodation during COVID-19: A mixed-methods study of Italian consumers. *Journal of Quality Assurance in Hospitality & Tourism*, 1-27. <https://doi.org/10.1080/1528008X.2021.1943599>


Engineer, A. (2021). An integrative health framework for wellbeing in the built environment. *Building and Environment*, 15, DOI: 10.1016/205.2021.108253

Gokcakan, K. & Gokcakan Cicek, N. (2016). Characteristics of colors, interior design and their psychological and physiological effects. *The Turkish Online Journal of Educational Technology*, 425-430
<https://easiv.anadolu.edu.tr/xmlui/bitstream/handle/11421/19717/19717.pdf>

Hout, G. (2016). The acoustic performance of suspended ceiling systems. *University of Canterbury*, 1–271.

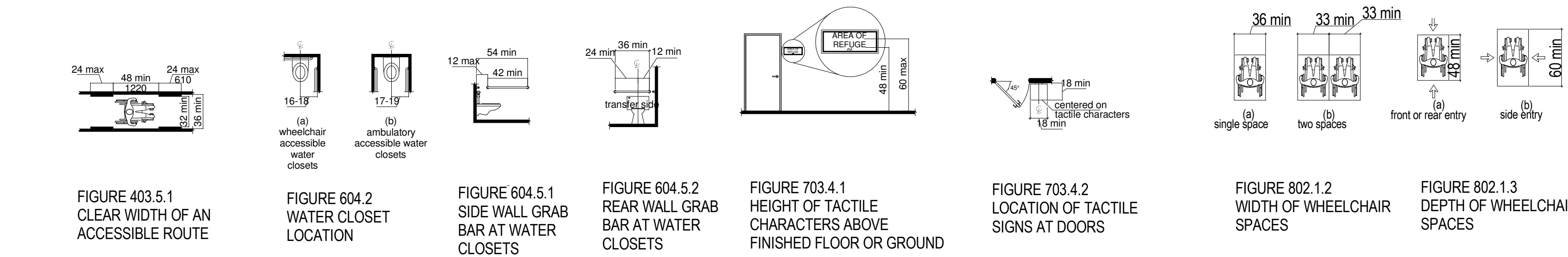
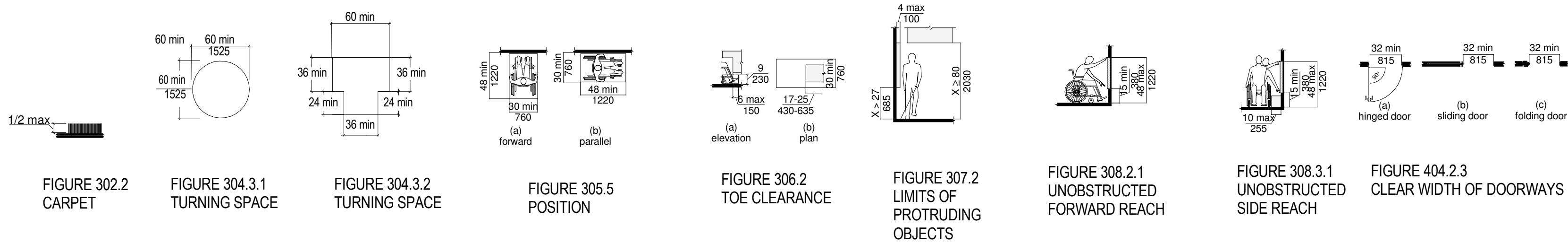
International WELL Building Institute (WELL). (2022) The WELL Building Standard v2 with Q1 2022 addenda.

Works Cited

- 
- Kang, J., & Shin, H. (2020). Reducing perceived health risk to attract hotel customers in the COVID-19 pandemic era: Focused on technology innovation for social distancing and cleanliness. *International Journal of Hospitality Management*, 91(1), 1-9. <https://doi.org/10.1016/j.ijhm.2020.102664>
- Kayhan, A. M., Şahin, A., & Erkan, İ. (2021). The effect of types of light on people's mood using a church as an example in the virtual reality. *Mental Health, Religion & Culture*, 1–15. <https://doi.org/10.1080/13674676.2020.1850665>
- Panagopoulos, T., Sbarcea, M., & Herman, K. (2020). A biophilic mindset for a restorative built environment. *Proceedings of the Latvia University of Agriculture: Landscape Architecture & Art*, 17(17), 68–77. <https://doi.org/10.22616/j.landscapearchitecture.2020.17.08>
- Panajotova, L.P. & Vladeva, E.P. (2018) Halotherapy- benefits and risks. *Scientific Online Resource System*, 4, 22-26. <http://dx.doi.org/10.14748/sssp.v4i0.5010>
- Silva, R. F. L. da, Costa, A. D. L., & Thomann, G. (2019, September 4). Design tool based on sensory perception, usability and Universal Design. *Procedia CIRP*. Retrieved from <https://www.sciencedirect.com/science/article/pii/S2212827119309199>
- US Department of Justice. (2010, September 15). *2010 ADA standards for accessible design*. Retrieved from <https://www.ada.gov/regs2010/2010ADAStandards/2010ADAstandards.htm#pgfId-1006182>
- Vardaxis, N.-G., Bard, D., & Persson Waye, K. (2018). Review of acoustic comfort evaluation in dwellings—part I: Associations of acoustic field data to subjective responses from building surveys. *Building Acoustics*, 25(2), 151–170. <https://doi.org/10.1177/1351010x18762687>

ADA STANDARDS MOUNTING HEIGHTS

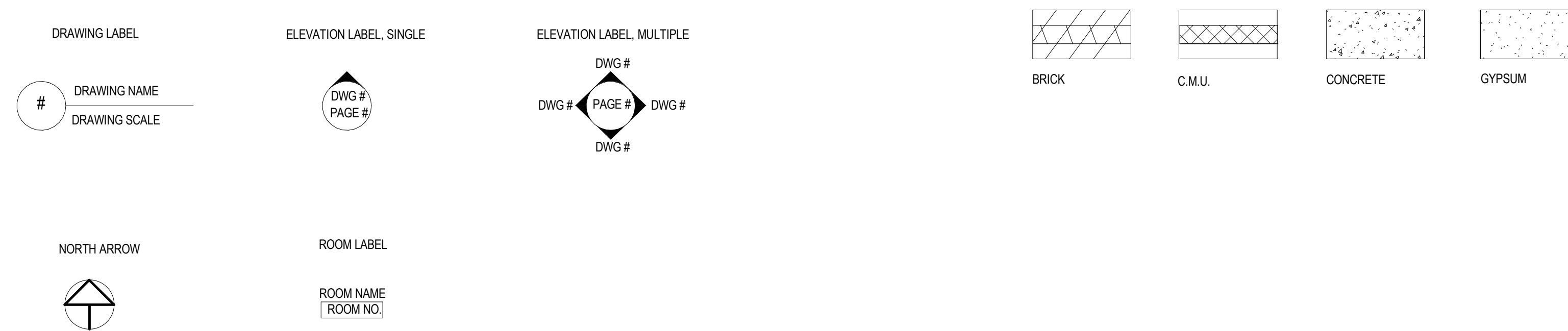
Notes:



Drawing Index:

- A.3.1 FURNITURE, FIXTURES, AND EQUIPMENT PLAN
- A.4.1 LIFE SAFETY PLAN
- A.5.1 REFLECTED CEILING PLAN
- A.7.1 INTERIOR ELEVATIONS

DRAWING SYMBOLS & MATERIAL INDEX



ABBREVIATIONS

- A.F.F = Above the Finished Floor
- C.M.U = Concrete Masonry Unit
- DWG = Drawing
- FF&E = Furniture, Fixtures, and Equipment
- Hr. = Hour
- O.C = On Center
- OL = Occupant Load
- Min = Minute
- NO. = Number
- Rm = Room
- SF = Square Footage
- SQ = Square

BUILDING CODE SUMMARY

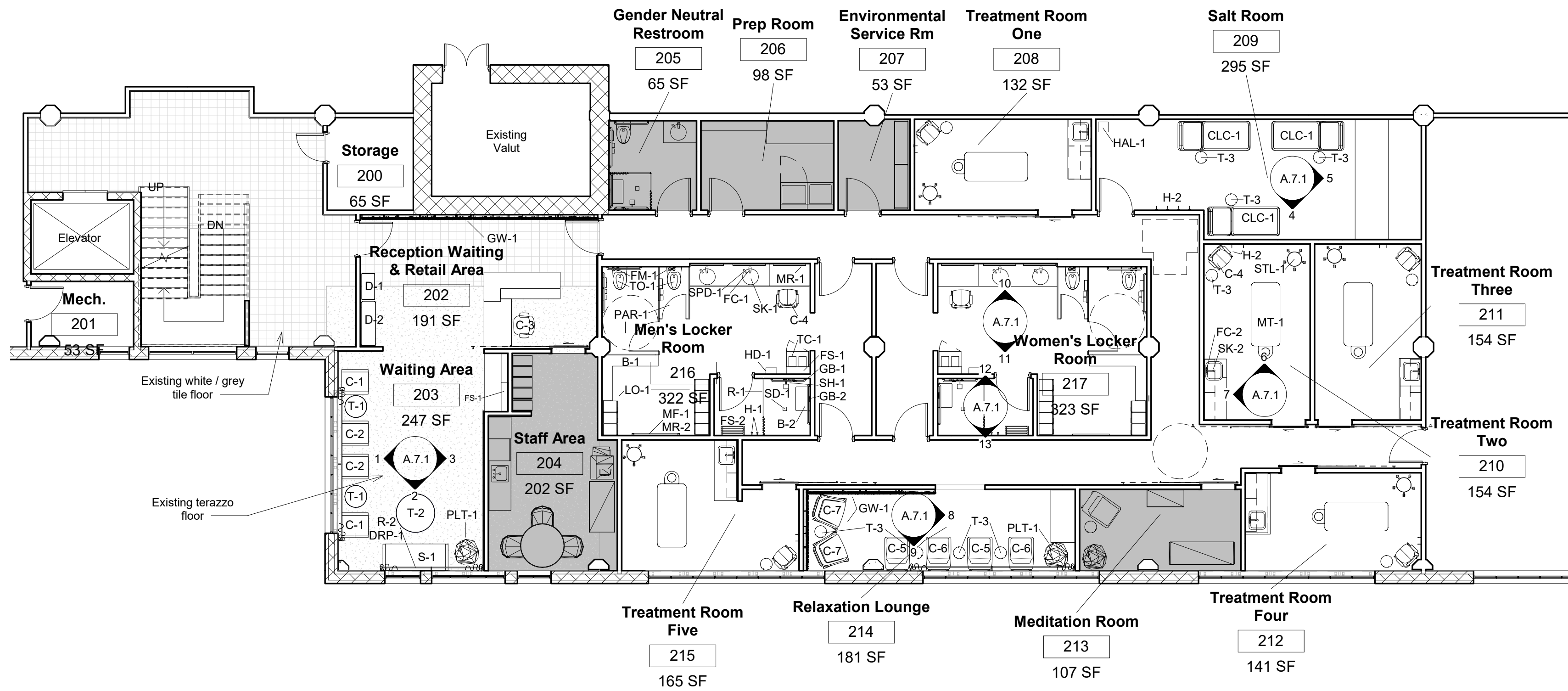
ADOPTED JURISDICTIONAL BUILDING CODES	OCCUPANT LOAD	SQUARE FOOTAGE
International Building Code 2018 International Plumbing Code 2018	129	3,800 Square Feet
<u>OCCUPANCY CLASSIFICATION</u> Business (B)		

The Winslow Spa

DRAWN BY: Sophie Semanko
DATE: 05/09/2022
COURSE: ADHM 353

A. Cover

Notes:
 -See Project Folio for FF&E Schedules
 -Treatment Rooms 208, 210, 211, 212, and 215 are Typical
 -Men's Locker Room 216 and Women's Locker Room 217 are Typical

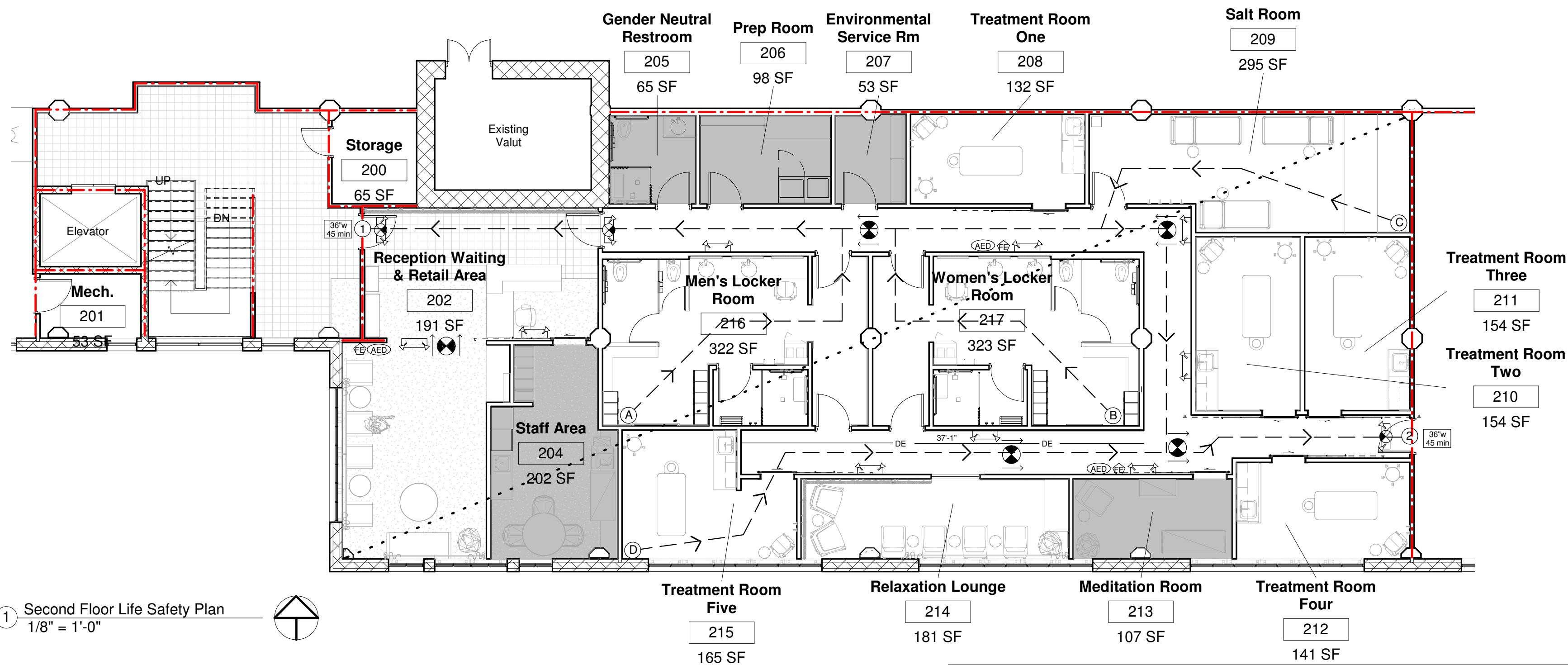


① Second Floor Furniture, Fixtures, and Equipment Plan
 1/8" = 1'-0"

Furniture, Fixtures, and Equipment Plan

The Winslow Spa

DRAWN BY: Sophie Semanko
 DATE: 05/09/2022
 COURSE: ADHM 353



1 Second Floor Life Safety Plan
1/8" = 1'-0"



LIFE SAFETY PLAN

- EXIT SIGN- WALL MOUNT ① ← ← ← (A) TRAVEL DISTANCE
- EXIT SIGN- DIRECTIONAL MOUNT —DE 0'-0" DE— DEAD END CORRIDORS
- EXIT SIGN & EGRESS LIGHTING - - - - - 1/3 DIAGONAL RULE
- EGRESS LIGHTING - - - - - 1-HR FIRE BARRIER
- FIRE EXTINGUISHER - SURFACE MTD
- DEFIBRILLATOR (AED)
- EGRESS DOOR WIDTH RATING

EGRESS INFORMATION

Occupancy Classification	Business (B)
Automatic Sprinkler System	Yes
Required Number of Exits	2
Total Egress Width Required From Space	3'-0"
Dead End Corridor allowed per IBC	50'-0"
Travel Distance allowed per IBC	300'-0"
Travel Distance for A-1	75'-10"
Travel Distance for B-2	81'-2"
Travel Distance for C-1	100'-3"
Travel Distance for C-2	81'-0"
Travel Distance for D-2	42'-0"
Overall Diagonal	105'-10"

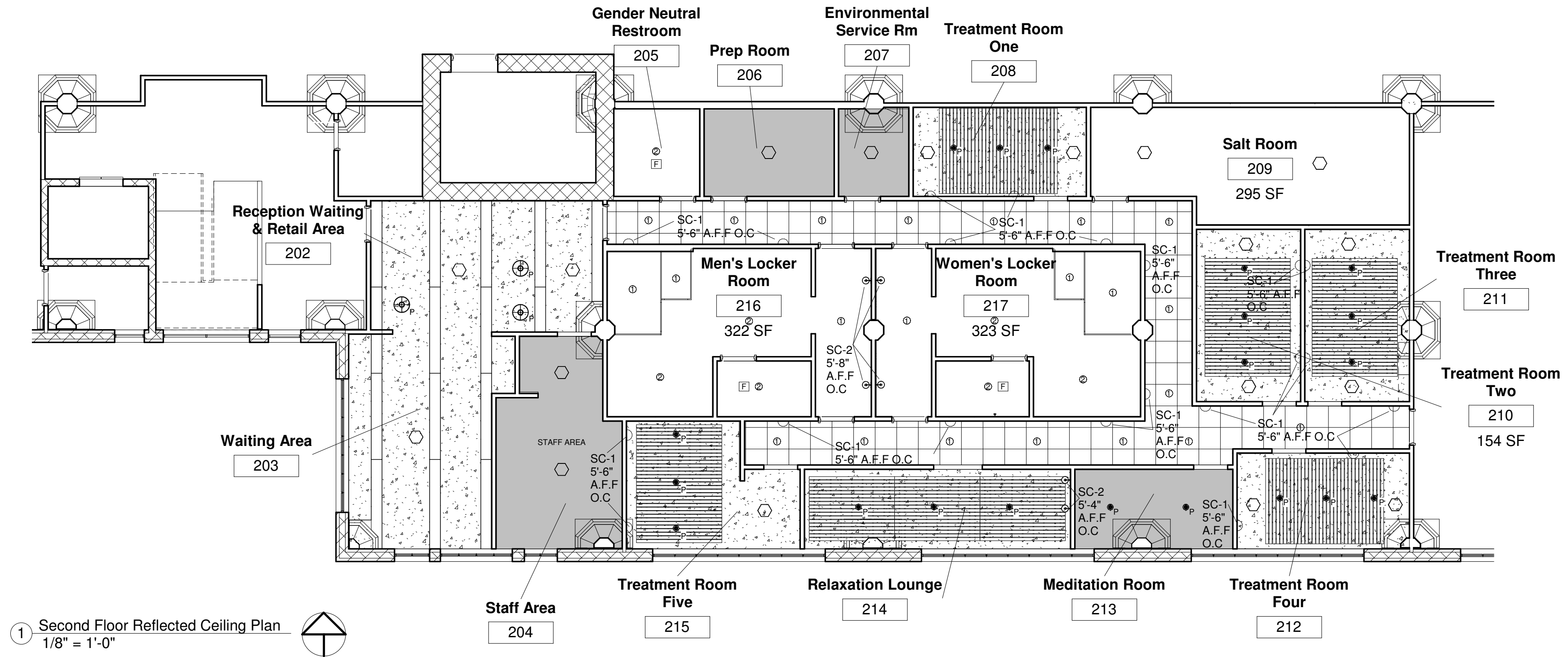
RM NO.	ROOM NAME	SQ. FEET	LOAD FACTOR	OL
202	Reception Waiting & Retail Area	89 sf	5 net	18 OL
203	Waiting Area	275 sf	15 net	19 OL
204	Staff Area	202 sf	15 net	15 OL
206	Prep Room	98 sf	5 net	20 OL
207	Environmental Service Room	53 sf	300 gross	1 OL
208	Treatment Room One	132 sf	150 gross	1 OL
209	Salt Room	295 sf	15 net	20 OL
210	Treatment Room Two	154 sf	150 gross	2 OL
211	Treatment Room Three	154 sf	150 gross	2 OL
212	Treatment Room Four	141 sf	150 gross	1 OL
213	Meditation Room	107 sf	150 gross	1 OL
214	Relaxation Lounge	181 sf	15 net	13 OL
215	Treatment Room Five	165 sf	150 gross	2 OL
216	Men's Locker Room	322 sf	50 gross	7 OL
217	Women's Locker Room	323 sf	50 gross	7 OL
TOTAL OCCUPANT LOAD				129 OL
TOTAL SQUARE FOOTAGE				3,800 sf

Life Safety Plan

The Winslow Spa

DRAWN BY: Sophie Semanko
DATE: 05/09/2022
COURSE: ADHM 353

Notes:
 -See Project Folio for Lighting and Room Finish Schedules
 -Ceiling Height is 12'-2" unless noted in the Ceiling Legend



1 Second Floor Reflected Ceiling Plan
 1/8" = 1'-0"

Lighting Legend	
F-1	Fan
FM-1	Flush Mount
P-1	Pendant
P-2	Pendant
RC-1	Recessed Can
RC-2	Recessed Can
SC-1	Wall Sconce
SC-2	Wall Sconce

Ceiling Legend	
ACT-1	Acoustical Ceiling Tile 10'-0" A.F.F
BM-1	Custom Ceiling Beam
	Existing Concrete Ceiling
PT-2	Painted Gypsum Ceiling 10'-0" A.F.F
SWC-1	Suspended Wood Ceiling 10'-0" A.F.F

Reflected Ceiling Plan

The Winslow Spa

DRAWN BY: Sophie Semanko
 DATE: 05/09/2022
 COURSE: ADHM 353

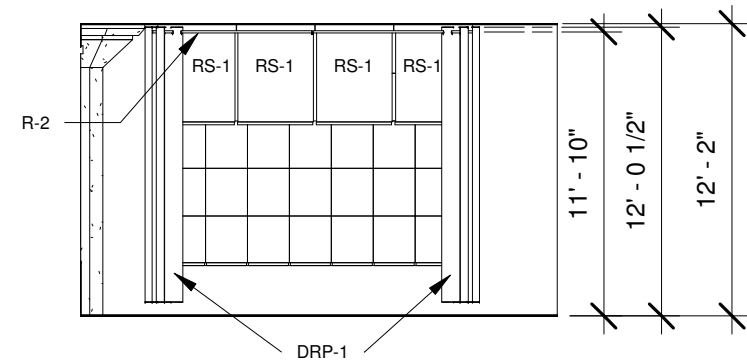
Notes:

-See Project Folio for Room Finish Schedules

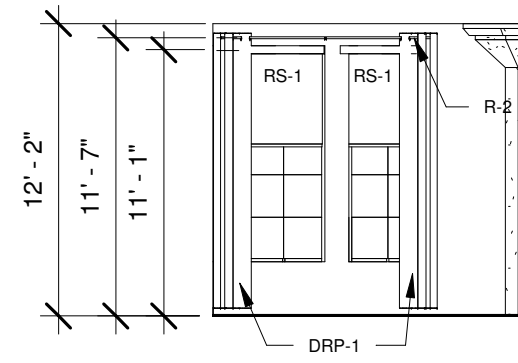
-GB-1 and GB-2 are installed 36" A.F.F O.C unless noted

-See A.5.1 for sconce mounting height

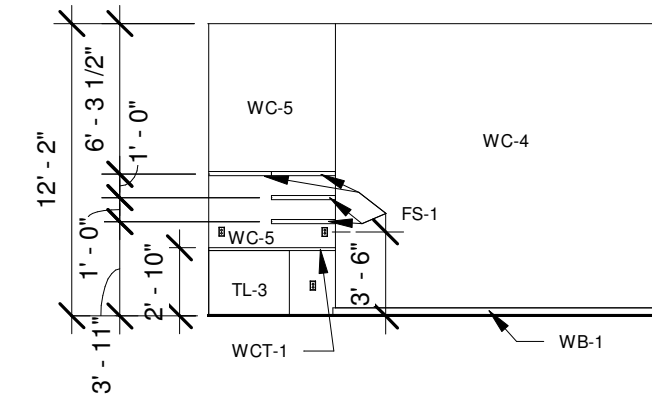
-Receptacles located 15" A.F.F O.C unless noted



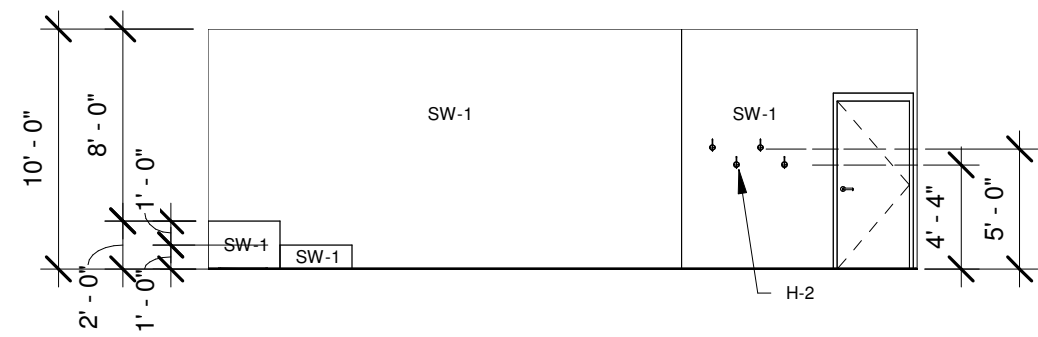
① Waiting Area West Elevation
1/8" = 1'-0"



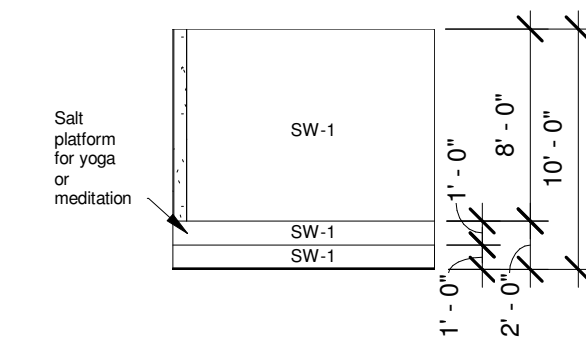
② Waiting Area South Elevation
1/8" = 1'-0"



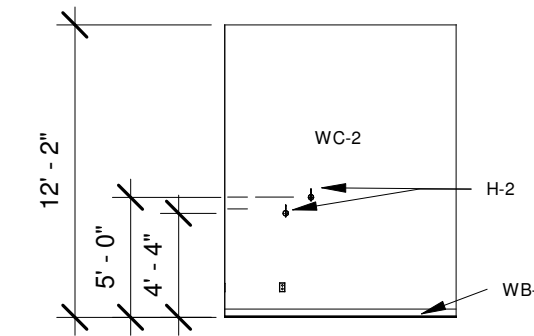
③ Waiting Area East Elevation
1/8" = 1'-0"



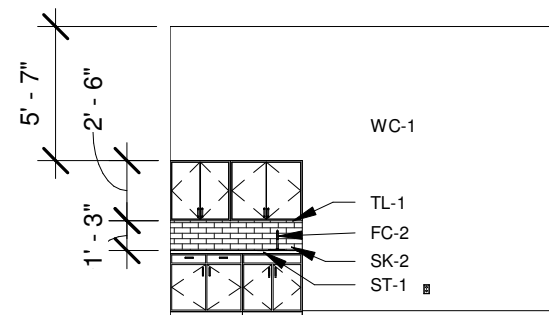
④ Salt Room South Elevation
1/8" = 1'-0"



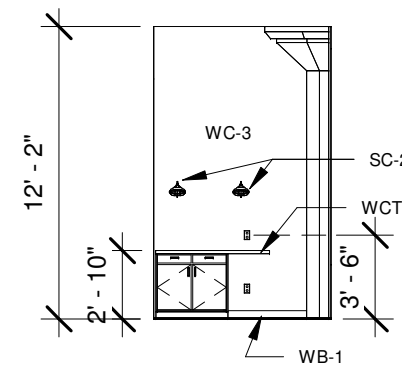
⑤ Salt Room East Elevation
1/8" = 1'-0"



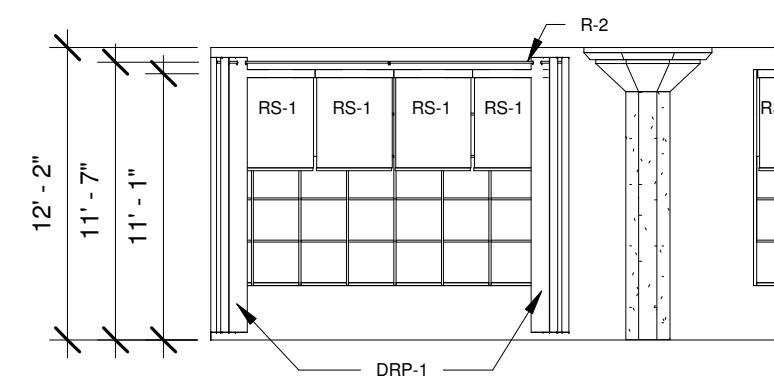
⑥ Treatment Room Two North Elevation
1/8" = 1'-0"



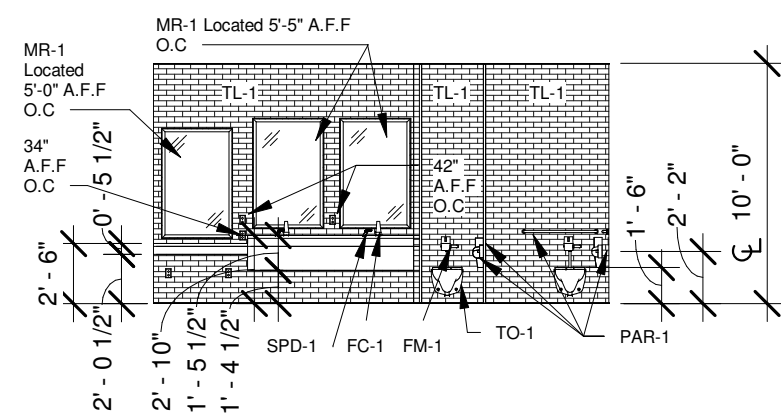
⑦ Treatment Room Two West Elevation
1/8" = 1'-0"



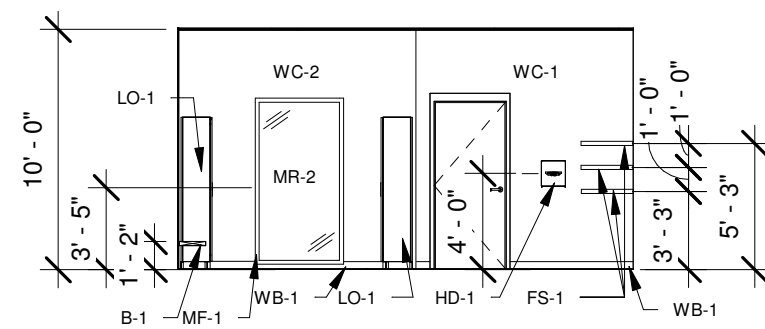
⑧ Relaxation Lounge East Elevation
1/8" = 1'-0"



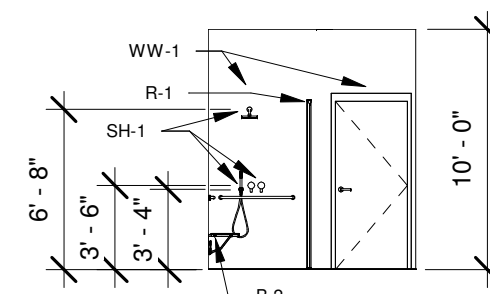
⑨ Relaxation Lounge South Elevation
1/8" = 1'-0"



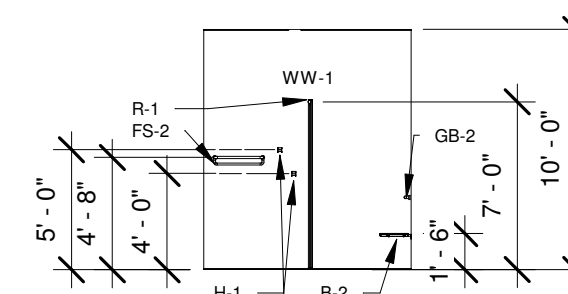
⑩ Women's Locker Room North Elevation
1/8" = 1'-0"



⑪ Women's Locker Room South Elevation
1/8" = 1'-0"



⑫ Women's Locker Room Shower North Elevation
1/8" = 1'-0"



⑬ Women's Locker Room Shower south Elevation
1/8" = 1'-0"

Interior Elevations

The Winslow Spa

DRAWN BY: Sophie Semanko

DATE: 05/09/2022

COURSE: ADHM 353