

Alfalfa Soil Fertility Requirements in North Dakota Soils



(NDSU photo)

NDSU EXTENSION
SERVICE

North Dakota State University, Fargo, North Dakota

November 2017

D.W. Franzen, Soil Science Specialist, NDSU Extension Service
M. Berti, Professor, NDSU Department of Plant Sciences

Alfalfa (*Medicago sativa*) is the only forage crop that was domesticated before recorded history (Brough et al., 1977; Small, 2011). Alfalfa originated in western Asia in the area now known as Iran in about 8,000 B.C., and its domestication closely followed the domestication of the horse.

The word “alfalfa” comes from Arabic meaning “horse fodder.” Alfalfa spread to China first, probably traveling east with the nomadic tribes of the Asian Steppe, not reaching Europe through Rome until 200 B.C.

Alfalfa was introduced to North America in about 1790, and now it is common throughout the U.S. as the result of deliberate cultivation and as a weed. It was introduced into North Dakota in about 1890. In 2016, 1.5 million acres of alfalfa hay were harvested, representing about 5 percent of the nation’s annual alfalfa hay acreage. The hay had a value of about \$190 million (U.S. Department of Agriculture-National Agricultural Statistics Service) in North Dakota.

Relative feed value (RFV) is an index developed to compare and evaluate forages based on their usefulness to ruminant livestock, such as beef and dairy cattle. Alfalfa has the greatest potential RFV of any major forage source (Table 1).

Alfalfa hay removal results in removal of minerals from the soil. As a perennial plant, the mineral composition of

alfalfa’s above-ground plant parts depends on maturity. Table 2 shows the average of mineral percentages at late bud stage of alfalfa. All mineral elements are essential, but nitrogen (N), potassium (K) and calcium (Ca) are the three nutrients taken up in greatest amount.

Alfalfa production is influenced by several soil factors in North Dakota: soil pH, nitrogen (N) supplied by symbiotic N-fixing bacteria, phosphorus (P), potassium (K), sulfur (S) and the presence of excessive soluble salts. These factors will be discussed in detail in this publication.

Table 1. Relative feed value (RFV) of selected forages common to North Dakota. (From Kansas Forage Task Force, www.asi.k-state.edu/doc/forage/fora41.pdf. Accessed August 2017).

Forage	ADF %*	NDF%*	RFV%
Alfalfa, prebud	28	38	164
Alfalfa, bud	30	40	152
Alfalfa, early bloom	32	43	138
Alfalfa, grassy	39	54	101
Brome, late vegetative	35	63	91
Brome, late bloom	49	81	58
Corn silage, well eared	28	48	133
Corn silage, few ears	30	53	113

*ADF is acid detergent fiber and NDF is neutral detergent fiber, which are related to cellulose and lignin content and digestibility.



(NDSU photo)

Table 2. Mineral element concentration in above-ground biomass of alfalfa sampled at late bud stage and amount of minerals in 1 ton of alfalfa forage dry matter. (Rominger et al., 1975)

N	P	K	S	Ca	Mg	Cl	B	Zn	Cu	Mn
%							ppm			
3.0	0.3	2.5	0.2	1.2	0.35	0.2	33	23	16	35
Mineral element content, pounds per ton dry matter										
60	6	50	4	24	7	3	0.066	0.046	0.032	0.070

ppm = parts per million

Soil pH

The soil pH required for maximum alfalfa production is about 6.7 (McClellan and Brown, 1984). The average soil pH in North Dakota is about 7; however, pH varies in the state from about 4 to slightly more than 8. Fields have been found that vary from 4.7 to 7.8 within a 40-acre boundary, so soil testing, preferably by zone, is strongly recommended.

When soil pH is greater than 6.7, the yield potential for producing alfalfa isn't reduced, which is fortunate because many soils in North Dakota have pH greater than that. Estimates of potential yield reduction due to low pH are 7 percent for a soil pH of 6, 28 percent for a pH of 5.5 and 42 percent for a pH of 5.

Soil pH also influences stand longevity and density prior to establishing a subsequent crop. Low pH results in reduced stands and, consequently, less N credit for a subsequent crop after alfalfa termination.

One of the consequences of low surface soil pH is lower nitrogen fixation rates of Rhizobia bacteria and surface pH, as well as subsurface pH, which should be near or above pH 6.7. To increase soil pH, an amendment needs to be applied to the soil to neutralize acidity.

North Dakota has no limestone quarries, so the most easily accessible amendment in North Dakota for increasing soil pH is sugar beet waste lime. Sugar beet processing plants generate waste lime at Sydney, Mont., and the American Crystal Sugar Cooperative plants along the Red River Valley in eastern North Dakota and western Minnesota (Hillsboro, N.D., and; East Grand Forks, Drayton and Moorhead, Minn.).

Some municipal water treatment plants also use finely ground limestone to facilitate sedimentation of solid contaminants and may offer this limestone slurry for land application.

Generally, a loam soil with 3 percent organic matter would require about 2 tons per acre of 100 percent calcium carbonate-equivalent liming material to increase the pH about 0.5 unit.

Nitrogen

Alfalfa can be supplied all of its nitrogen (N) requirements through inoculating the seed with the proper Rhizobium bacteria. The strain necessary for alfalfa is *Rhizobium meliloti*. It also is the strain required for sweetclover. Soybean, field pea, chickpea, dry edible bean, clovers and lentil inoculum will not be effective on alfalfa.

The inoculant must adhere to the seed and stay on the seed until it enters the soil. Some seed suppliers preinoculate alfalfa seed. However, storage at the incorrect temperature or an extended delay between treatment and planting may reduce the effectiveness of the inoculation bacteria. Thus, many growers prefer to inoculate their seed immediately before planting.

Check the expiration date of the inoculant to be sure that the bacteria still is viable. Heat and direct sunlight kill the bacteria even in the bag, so storage in a cool, dark area will result in best performance until it is needed.

A small cement mixer can mix seed with the proper amount of inoculant for larger jobs. To enhance adhesion of inoculant to the seed, the farmer may use a sticking agent such as milk, or water that contains sugar, molasses or gum arabic.

Only a small amount of liquid should be added to the seed to prevent the seed from getting too wet and having flow problems through the planter. Planting should occur within 24 hours of inoculation.

Nitrogen fertilizer application to alfalfa can result in nitrate accumulation within the forage, making it toxic to livestock. For further information, see the NDSU publication "Nitrate Poisoning of Livestock" (<http://tinyurl.com/NitratePoisoning>).

Phosphorus

Phosphorus (P) nutrition is essential for highest yield in an environment. Adequate P maximizes hay and forage yield in high- and low-yielding environments. Ideally, soil test P levels should be greater than 15 parts per million (ppm) prior to alfalfa seeding; however, P levels this high are not common in North Dakota. Growers are encouraged to apply at least 200 pounds per acre of 11-52-0 prior to seeding.



If the land is conventionally tilled, apply the fertilizer prior to final tillage before seeding. If the field is in a no-till system, applying the fertilizer with an air seeder or knifing it into the soil before seeding will provide subsurface P for initial growth.

Phosphorus rate studies in North Dakota, the region and many parts of the world have shown that subsequent P application is essential to maintain yield and stand through the years. The most effective timing of annual P application is after first cutting.

An explanation for this is that in early spring, P is released from organic sources and utilized to produce the first cutting, reducing the need for early spring P application. However, during the second cutting growth, release of soil P is low, so supplemental P fertilization is required. Surface application results in efficient P uptake by alfalfa.

Applying P through a subsurface knifed application after alfalfa establishment isn't needed. A rate of 40 to 50 pounds per acre of P₂O₅ as 11-52-0 or another water-soluble P fertilizer is sufficient to maintain yield and stand, as an annual application, regardless of yields achieved.

Table 3. Phosphorus recommendation for alfalfa establishment broadcast application rates of P₂O₅.

Olsen P, ppm				
0-3	4-7	8-11	12-14	15+
Rate P ₂ O ₅ , pounds per acre				
120	100	80	60	40

Potassium

Alfalfa is a high user of potassium (K). The application of K should be related to soil test level, clay chemistry and alfalfa tonnage removed the previous season. Initial K level should dictate pre-seeding K application.

The soil cation exchange capacity (CEC) also will be useful to determine the initial K application rate that the soil would support. Unfortunately, the CEC test utilized by most soil testing labs in the region will overestimate CEC due to the influence of free Ca/magnesium (Mg) carbonates that will be solubilized during the testing procedure and the presence of soluble salts that will be in the testing solution from most of our soils.

The following table contains estimates of CEC from contribution of our dominant clay chemistries and organic matter to CEC in North Dakota.

Table 4. Estimated CEC based on soil texture and organic matter in North Dakota.

Soil Texture	Organic Matter Percent	Estimated CEC
Loamy sand	2	4
Sandy loam	2	6
Sandy loam	4	10
Loam	2	10
Loam	4	12
Silt loam	4	15
Clay loam	4	17
Silty clay loam	4	20
Clay	4	22

With soil having CEC less than 10, increasing the soil test K level (dry-based soil test K, 1-M ammonium acetate extraction) to more than 100 ppm will not be possible.

Recent research in North Dakota found that the critical level of soil test K required was related to the ratio of smectite-chemistry clay to illite-chemistry clay. North Dakota has been mapped very recently for the smectite-to-illite ratio in major soil groups in each county (Figure 1).

Soils with a smectite-to-illite ratio greater than 3.5 draw some soil solution K back into the clay interlayers when the soil is dry, rendering it unavailable to crops until the soil becomes moist. Soils with a smectite-to-illite ratio less than 3.5 provide K to crops whether the soil is moist or dry.

Using this information, the critical K soil test level for alfalfa in soils with a smectite-to-illite ratio greater than 3.5 would be 200 ppm. For soils in North Dakota with a smectite-to-illite ratio less than 3.5, a critical level of 150 ppm should be used. If the soil test K levels are above the critical K level, K fertilizer need not be applied.

If the soil test K level is at or below the critical level, then supplemental K application will be important to maintain stand and high yield for a given environment. Early spring K release from soil minerals will sustain the alfalfa crop through the first harvest, but after the first harvest, K application based on removal by the previous year's yields will be essential to maintaining stand and productivity.

One ton of alfalfa removes about 50 pounds K_2O per acre. Therefore, the calculation to guide K application after establishment is:

**Tons alfalfa removed previous year
X 80 pounds per acre of 0-0-60
= Rate of 0-0-60 after first cutting**

For example, the recommended rate of 0-0-60 after the first cutting in a year preceded by removal of 4 tons per acre alfalfa would be 4 tons X 80 pounds per acre of 0-0-60/ton, or 320 pounds per acre of 0-0-60. Alfalfa takes up surface application of K very efficiently.

The recommended rates of K_2O to be applied at or before alfalfa establishment are indicated in Tables 5 and 6. Note that at K soil tests in excess of 150 and 200, depending

Table 5. Potassium recommended at alfalfa establishment in soils with a smectite-to-illite clay ratio greater than 3.5 for broadcast application rates of K_2O (see Figure 1).

K soil test, ppm				
0-50	51-100*	101-150	150-200	200+
Rate K_2O , pounds per acre				
180	150	120	90	60

* Soils with estimated CEC (Table 2) of 10 or less, apply 90 pounds of 0-0-60 per acre at establishment regardless of soil test.

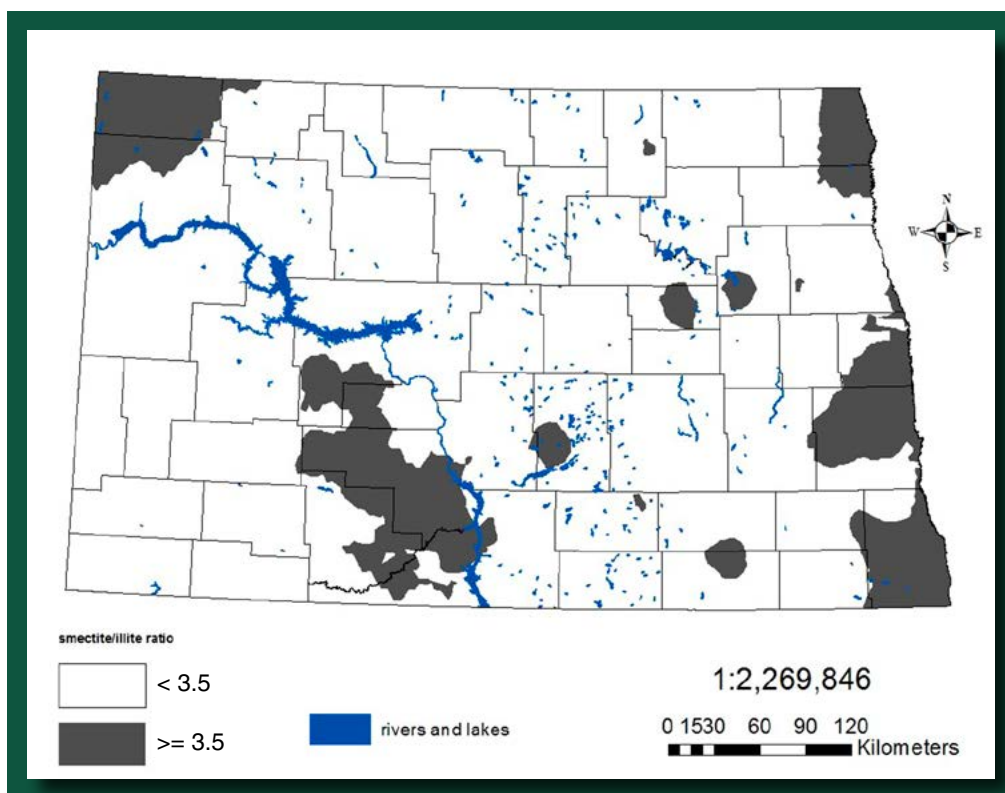


Figure 1. Smectite-to-illite ratios of the soil clay fraction of soil minerals. Dark gray delineates soils with ratios greater 3.5, and white areas have ratios less than 3.5.

Table 6. Potassium recommended at alfalfa establishment in soils with a smectite-to-illite clay ratio less than 3.5 for broadcast application rates of K₂O (See Figure 1).

K soil test, ppm			
0-50	51-100*	101-150	150+
Rate K ₂ O, pounds per acre			
150	120	90	60

* Soils with estimated CEC (Table 2) of 10 or less, apply 90 pounds of 0-0-60 per acre at establishment regardless of soil test.

on the smectite-to-illite ratio of the soil clay, 60 pounds per acre K₂O still is recommended for improved winter survivability. Rates greater than 60 pounds per acre of K₂O should be split, with 60 pounds per acre K₂O applied in the fall, and the remainder applied after first cutting.

Alfalfa takes up potassium in concentrations greater than the physiological requirements for K if soil K availability is high. Excessive K in forage can be detrimental to livestock. Forage testing is the most effective method to ensure animal nutrient requirements are being met and not exceeded in a feeding program. Laboratory analysis is the recommend method to determine forage nutrient content and forage value.

Sulfur

Sulfur (S) deficiency in alfalfa is not common in North Dakota; however, S deficiency has been observed on loamy sand to sandy loam low organic-matter soils in the region (Figure 2). Sulfur deficiency has become an annual problem for growers of many annual crops in North Dakota within the past 10 years due to increased yields, increased rainfall and reduced S contributions from rainfall.

Sulfur deficiency will appear in fields first on coarser-textured, higher landscape positions, particularly following periods of high spring rainfall. Deficiency symptoms will appear as yellowing near the growing point of plants, with green leaves below.

An application of granular gypsum (calcium sulfate), ammonium sulfate, potassium-magnesium sulfate or related materials will alleviate the problem. Phosphate sources with sulfate-S imbedded in the granules also will aid in alleviating and preventing deficiencies of S.

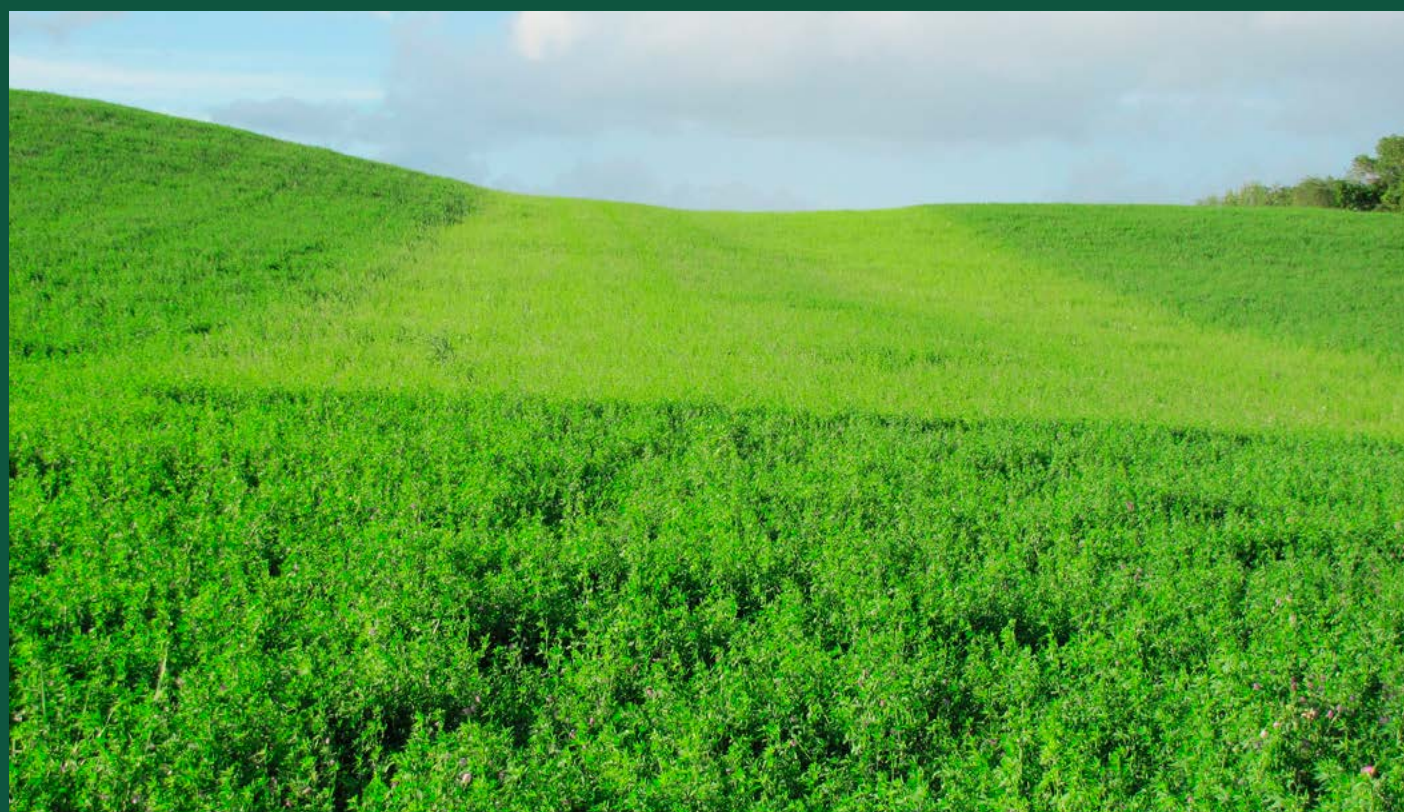


Figure 2. Sulfur deficiency in an S rate study near Lake Park, Minn. Sulfur deficiency is characterized by yellowing in the upper leaves of the alfalfa plants. (NDSU photo)



Figure 3. Boron deficiency in alfalfa, Australia. (Photo courtesy of Rob Norton, International Plant Nutrition Institute)

Micronutrients

Alfalfa can be susceptible to boron (B) deficiency on low organic-matter sandy soils. Deficiencies appear as stunted plants with brown discoloring between leaf veins (Figure 3). No evidence is available to date of B deficiency in North Dakota, although a statewide soil sampling 10 years ago showed very low soil B levels in western North Dakota, with higher B levels only common in the Red River Valley.

A soil test B level of 1 ppm (hot water extraction method) is considered the critical level for alfalfa in Wisconsin and Minnesota. Boron deficiency is more common in Minnesota on low organic-matter, sandy soils in the west-central part of the state.

If B was used as a fertilizer, application of no more than 1 pound per acre of B annually should be applied. More reports have been made of B toxicity due to overapplication than of deficiency in the region.

No reports have been made in North Dakota of zinc, manganese, copper, iron, chloride, nickel or cobalt deficiencies.

Tolerance to Soluble Salts and Use of Alfalfa to Reduce Salts in Fields

The threshold for salinity is defined as the salt concentration that results in noticeable yield loss in plants/crops. Recent research at NDSU has shown that all soluble salt concentrations above zero have some effect on crop yield; however, yield losses are small until the concentration formerly defined as “threshold” has been attained.

Alfalfa is classified as a moderately susceptible crop in terms of salinity, with the ability to maintain near-maximum yield at EC (electrical conductivity - the laboratory result of salinity analysis) of 1.4 millimhos per centimeter (mmhos/cm). Alfalfa is most susceptible to stand loss at seeding to early seedling development.

For this reason, planting early in the spring after snowmelt will minimize the salinity encountered because soluble salts will leach a few inches or more downward into the soil before the evaporative pull of warmer temperatures and lower humidity increases EC at the soil surface later in the season. Once alfalfa is established, its tolerance to salinity is much greater.

Because alfalfa growth utilizes more water during a growing season than most crop choices, and because of its deep rooting characteristics, alfalfa can be used as a living drainage tool to prevent saline areas from developing or increasing in size. If managed properly, alfalfa production may decrease the areas affected by salinity for subsequent crops.

A 30-foot strip of alfalfa seeded next to a road ditch has the ability to utilize water at such a depth that water from the ditch is intercepted before it reaches the interior of the field, reducing salinity in the field through water table depth management.

When alfalfa is seeded above a saline seep, again, the alfalfa can intercept groundwater before it reaches the seep, resulting in salinity abatement in the seep. If alfalfa is seeded around a large within-field saline area, groundwater that is contributing to the presence and expansion of the within-field saline area will be reduced, and the size of the area affected by salinity may be reduced.

As the saline-affected area shrinks, alfalfa can be seeded in the newly reclaimed soil, further shrinking the affected area. Fields where salinity develops at a field scale may benefit from alfalfa production for two to three years, followed by one to three years of annual cropping and then alfalfa again.

Organic Production

Effective production of organic alfalfa would benefit greatly from an integrated organic livestock farming system. Application of composted manure on the alfalfa after first cutting at a rate dictated by manure analysis to provide the recommended P and K would result in stand longevity and health.

Fresh manure, or piled but not composted manure, would contain high levels of nitrogen, which may result in the reduction of alfalfa stands due to selection for grasses in the sward. Application of excess N may result in the accumulation of nitrates in the forage, which can be toxic to livestock, so manure analysis and reasonable manure application rates are important based on analysis. Also, manure or compost should not be applied at rates that would cover and smother the alfalfa crowns.

Alternative P and K sources for organic alfalfa production are limited if manure is not included in the system. An additional P source would be bone meal. The source of K with the most immediately available K benefit would be sulfate of potassium magnesia.

References

- Brough, R.C., L.R. Robison and R.H. Jackson. 1977. The historical diffusion of alfalfa. *Journal of Natural Resources and Life Sciences Education*. 6: 13-19.
- McLean, E.O., and J.R. Brown. 1984. Crop response to lime in Midwestern United States. p. 267-308. In *Soil Acidity and Liming-Agronomy Monograph no. 12* (2nd Edition). ASA-CSSA-SSSA, Madison, Wis.
- Romlinger, R.S., D. Smith and L.A. Peterson. 1975. Yields and elemental composition of alfalfa plant parts at late bud under two fertility levels. *Canadian Journal of Plant Science* 55:69-75.
- Small, E. 2011. *Alfalfa and Relatives: Evolution and Classification of Medicago*. National Research Council of Canada, Ottawa, Ontario.
- U.S. Department of Agriculture-National Agricultural Statistics Service. 2016. www.nass.usda.gov/Quick_Stats/Ag_Overview/stateOverview.php?state=NORTH%20DAKOTA. Accessed May 2017.

The NDSU Extension Service does not endorse commercial products or companies even though reference may be made to tradenames, trademarks or service names. NDSU encourages you to use and share this content, but please do so under the conditions of our Creative Commons license. You may copy, distribute, transmit and adapt this work as long as you give full attribution, don't use the work for commercial purposes and share your resulting work similarly. For more information, visit www.ag.ndsu.edu/agcomm/creative-commons.

For more information on this and other topics, see www.ag.ndsu.edu

County commissions, North Dakota State University and U.S. Department of Agriculture cooperating. NDSU does not discriminate in its programs and activities on the basis of age, color, gender expression/identity, genetic information, marital status, national origin, participation in lawful off-campus activity, physical or mental disability, pregnancy, public assistance status, race, religion, sex, sexual orientation, spousal relationship to current employee, or veteran status, as applicable. Direct inquiries to Vice Provost for Title IX/ADA Coordinator, Old Main 201, NDSU Main Campus, 701-231-7708, ndsu.eoaa@ndsu.edu. This publication will be made available in alternative formats for people with disabilities upon request, 701-231-7881. 1M-11-17